

O.D.O.T. DISTRICT 2 SURVEY OFFICE (USE ONLY)

PERSONNEL

REFERENCE NO. 40

SHEET 18 OF 46

NOTES HOMAN

DATE 7-21-09

ROUTE SR 101

H.C. HOMAN

WEATHER SUNNY

COUNTY SENECA

R.C. ROUSOS

TEMP. 80°F

TOWNSHIP ADAMS

SECTION 19

DWG BY MAHLER PID 100787

T 3 N R 16 E

TYPE MONUMENT IPIN

~~ON SURFACE~~ - BELOW 1 1/2"

OFFSET \bar{C} PAVEMENT ON LT : RT

- TO - EDGE PAVEMENT

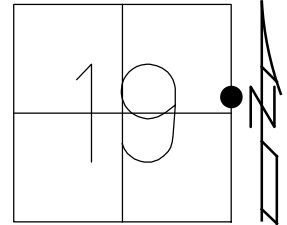
STATION: 509+76

HORIZ.DATUM: NAD83 (2011)

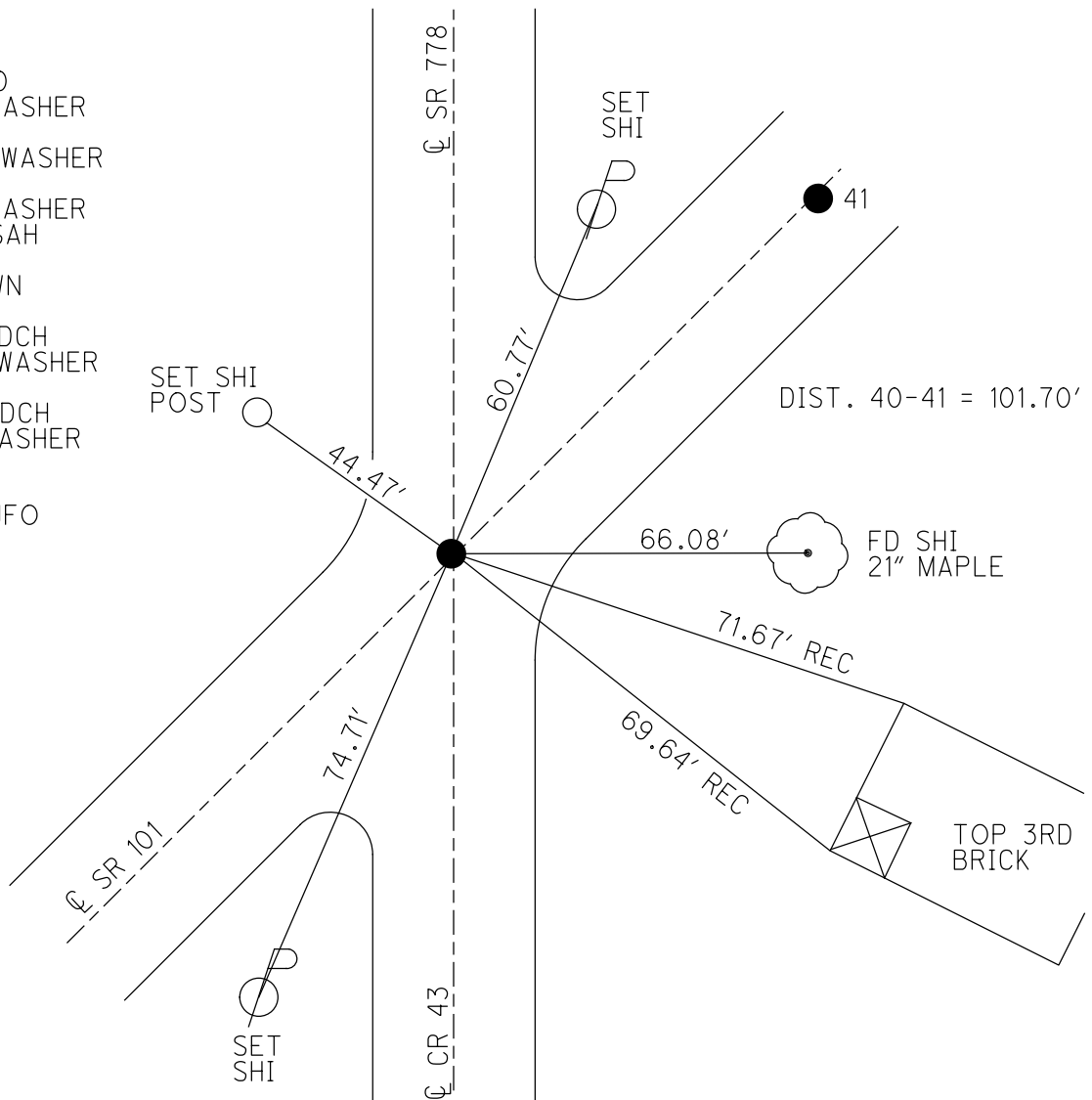
GEOID: NAVD88-2012A

GRID: NORTHING: 561671.718

EASTING: 1816059.766



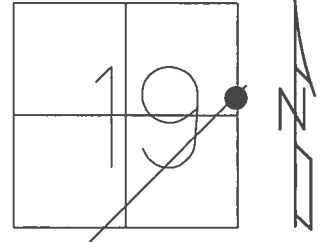
RECORD:
 STA. 0+00
 FD P.K./WASHER
 ATOP IPIN
 SET P.K./WASHER
 8/27/90
 FD P.K./WASHER
 2/4/05, SAH
 FD IPIN
 1 1/2" DOWN
 REF40
 7/21/09, DCH
 SET MAG/WASHER
 NEWREF40
 10/8/09, DCH
 FD MAG/WASHER
 REF40
 6/14/16
 9/18/17, JFO



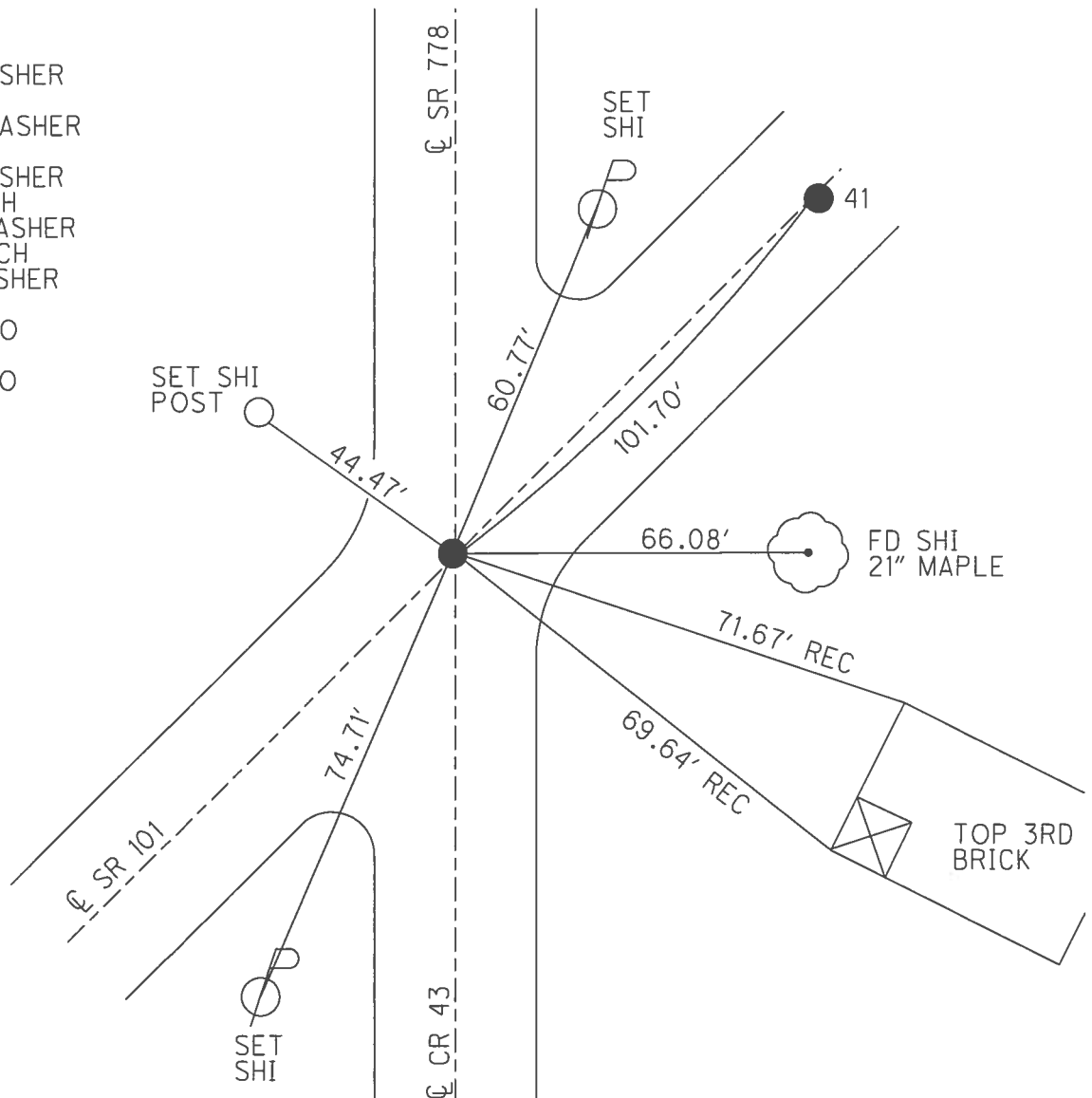
O.D.O.T. DISTRICT 2 SURVEY OFFICE (USE ONLY)

PERSONNEL _____ REFERENCE NO. 40 SHEET 18 OF 46
 NOTES HOMAN DATE 7/21/09 ROUTE SR 101
 H.C. HOMAN WEATHER SUNNY COUNTY SENECA
 R.C. ROUSOS TEMP. 80° TOWNSHIP ADAMS
 SECTION 19
 T 3 N R 16 E

TYPE MONUMENT IPIN
~~ON SURFACE~~ - BELOW 1 1/2"
 LEFT - ☉ PAV'T - RIGHT ON
- TO - EDGE PAVEMENT
 S.L.M. 509+76
 GRID: NORTHING: 561671.718 EASTING: 1816059.766



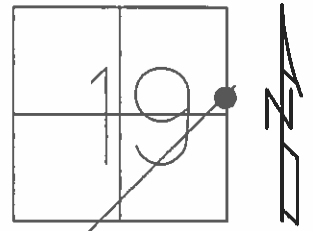
RECORD:
 STA. 0+00
 FD P.K./WASHER
 ATOP IPIN
 SET P.K./WASHER
 8/27/90
 FD P.K./WASHER
 2/4/05, SAH
 SET MAG/WASHER
 10/8/09, DCH
 FD MAG/WASHER
 REF40
 6/14/16, JFO
 UNCOVERED
 9/18/17, JFO



O.D.O.T. DISTRICT 2 SURVEY OFFICE (USE ONLY)

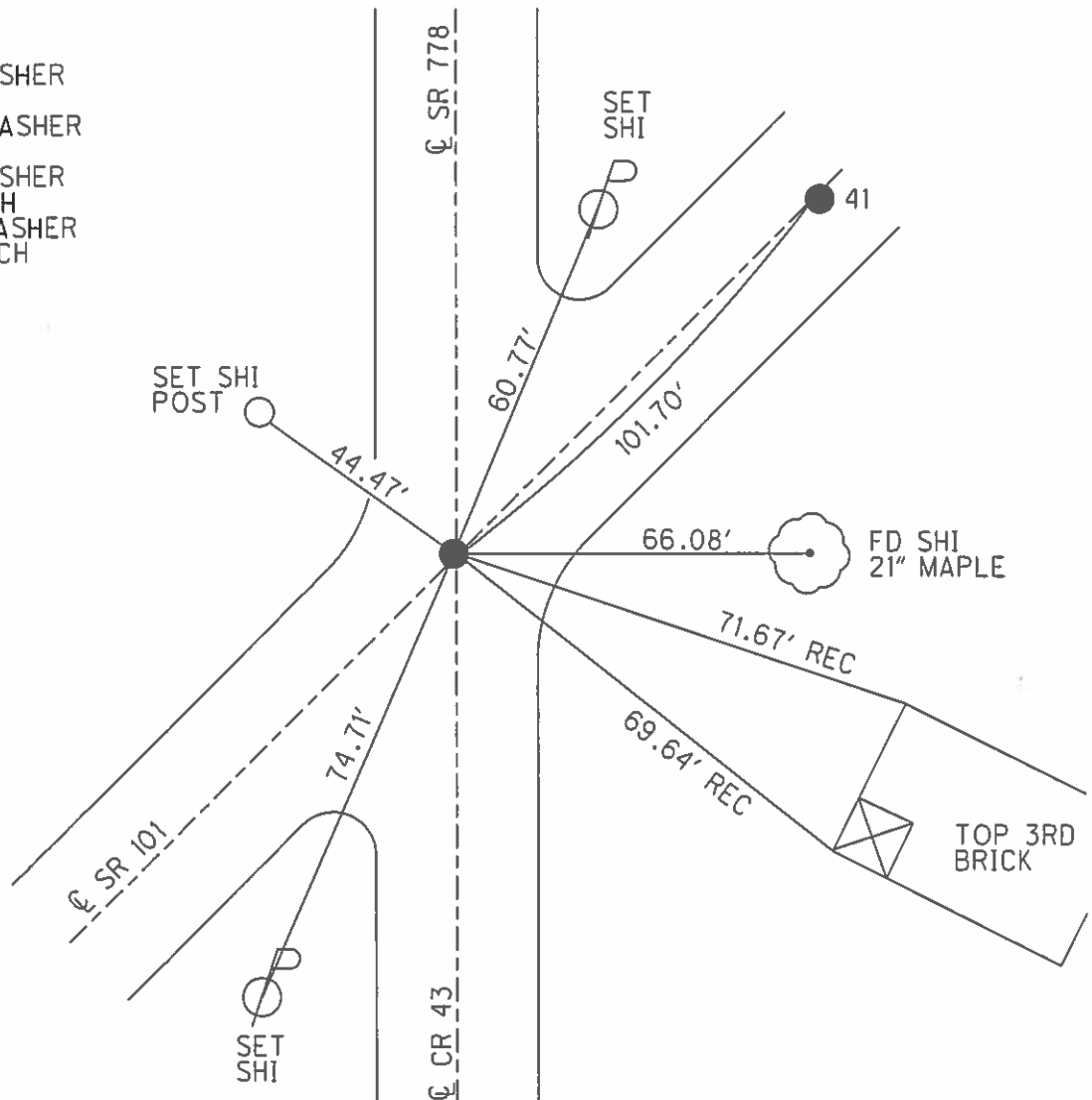
PERSONNEL	REFERENCE NO.	<u>40</u>	SHEET	<u>18</u>	OF	<u>46</u>
NOTES	HOMAN	DATE	<u>7/21/09</u>	ROUTE	<u>SR 101</u>	
H.C.	HOMAN	WEATHER	<u>SUNNY</u>	COUNTY	<u>SENECA</u>	
R.C.	ROUSOS	TEMP.	<u>80°</u>	TOWNSHIP	<u>ADAMS</u>	
				SECTION	<u>19</u>	
				T	<u>3</u>	R
					<u>16</u>	<u>E</u>

TYPE MONUMENT IPIN
~~ON SURFACE~~ - BELOW 1 1/2"
 LEFT - ☉ PAV'T - RIGHT ON
- TO - EDGE PAVEMENT
 S.L.M. 509+76



GRID: NORTHING: 561671.763 EASTING: 1816059.709

RECORD:
 STA. 0+00
 FD P.K./WASHER
 ATOP IPIN
 SET P.K./WASHER
 8/27/90
 FD P.K./WASHER
 2/4/05, SAH
 SET MAG/WASHER
 10/8/09, DCH



O.D.O.T. DISTRICT 2 SURVEY OFFICE

PERSONNEL

REFERENCE NO. 40

SHEET 14 OF 41

NOTES RIPPLE

H.C. BARBOUR

R.C. GEYMAN

DATE 8/27/90

WEATHER SUNNY

TEMP. 92°

ROUTE SR# 101

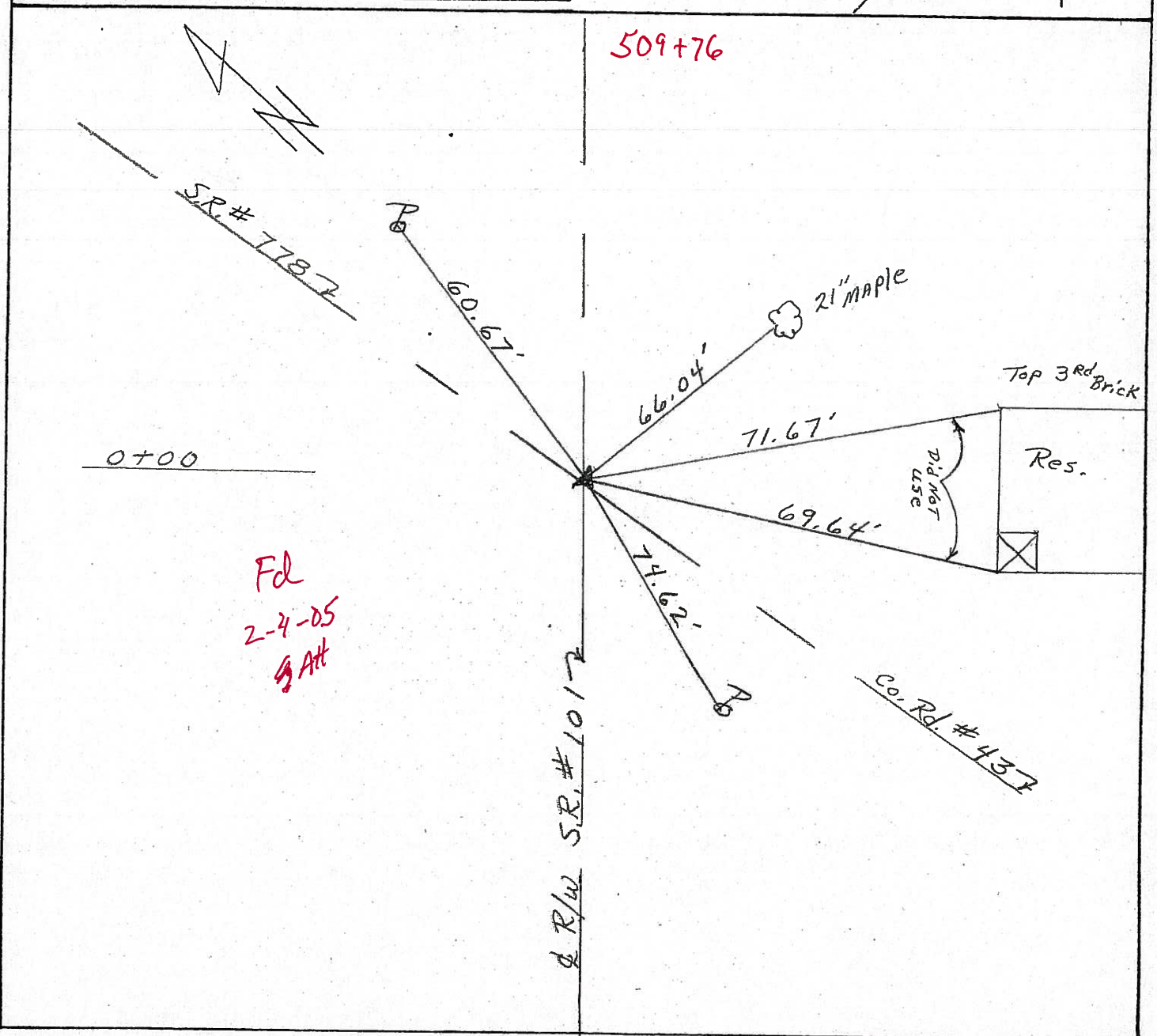
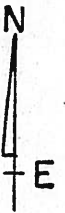
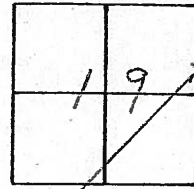
COUNTY Seneca

TOWNSHIP ADAMS

SECTION 19

T3 N R 16 E

TYPE MONUMENT Set P.K. & WASHER
 ON SURFACE - BELOW P.K. & WASHER A TOP IRON PIN
 LEFT - C. PAV'T. - RIGHT C. PAV'T.
 TO EDGE PAVEMENT
 S.L.M. _____



509+76

0+00

Fd
2-4-05
G AH

R/W SR# 101

Co. Rd. # 437

O.D.O.T. DISTRICT 2 SURVEY OFFICE

PERSONNEL

REFERENCE NO. 40

SHEET 14 OF 41

NOTES Ripple

H.C. BARBOUR

R.C. GEYMAN

DATE 8/27/90

WEATHER SUNNY

TEMP. 92°

ROUTE SR# 101

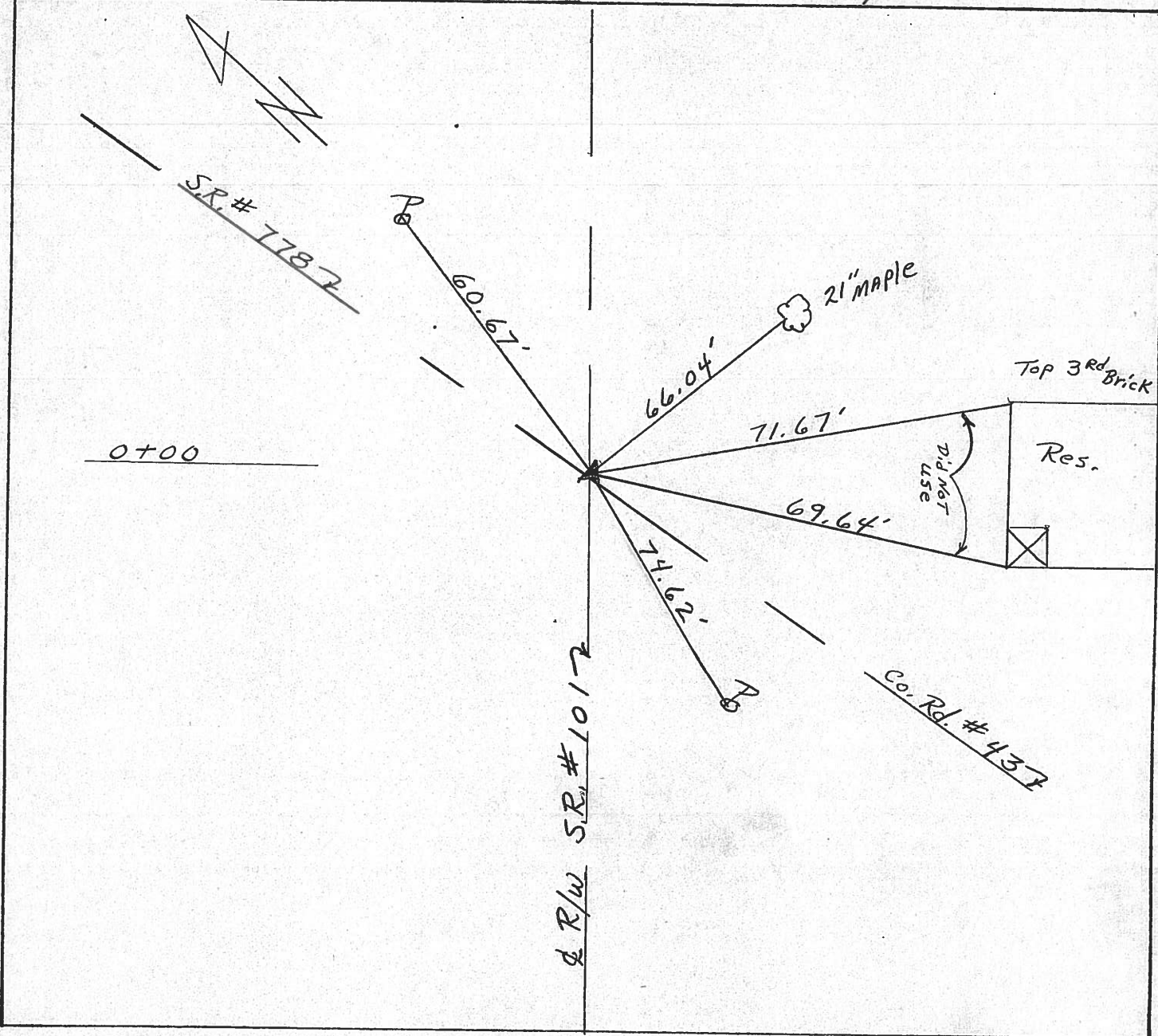
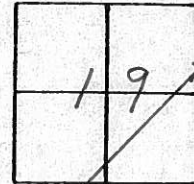
COUNTY Seneca

TOWNSHIP ADAMS

SECTION 19

T3 N R 16 E

TYPE MONUMENT set P.K. & washer
 ON SURFACE - BELOW P.K. & washer A Tap IRON PIN
 LEFT - € PAV'T. - RIGHT € PAV'T.
 TO EDGE PAVEMENT
 S.L.M. _____



County Seneca S.R. # 101

Date 6-26-79

Township Adams

Weather Fair

Section 19

Temp. 68°

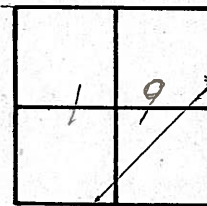
T₃N, R₁₆E

Personnel Schneider

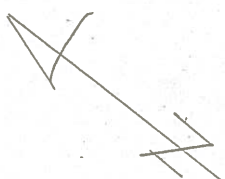
Mosser

Barbour

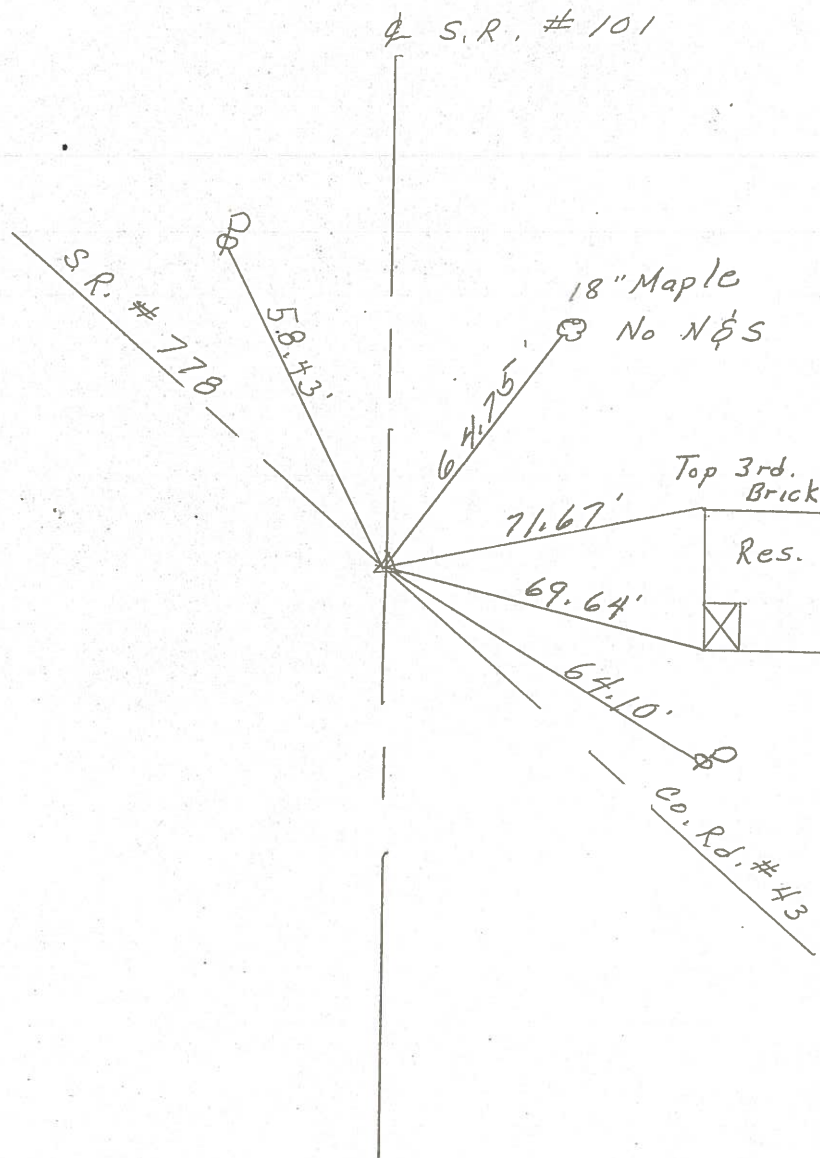
(40)



~~#40~~



0 + 00
 Iron Pin on \perp R/W
 2" down
 Reset P. K. Nail



PERSONNEL	TITLE	PERSONNEL	TITLE	COUNTY	DATE	WEATHER
Krabill				Seneea	2-10-64	
Kawaleski				S. R. # 101		
Geymah				SEC.		TEMP.
Bruggeman						

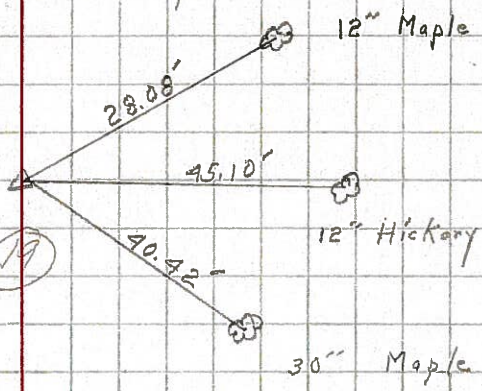
DESCRIPTION	LEFT	CENTER LINE	RIGHT	JOB NO.
-------------	------	-------------	-------	---------

39

STA. 60+04.92
 P.K. # 389

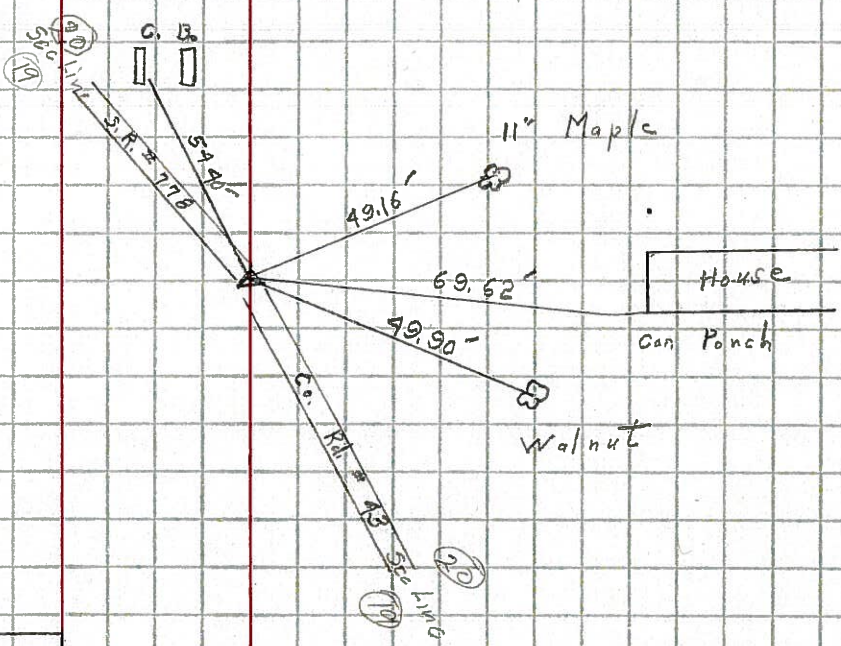
End of Sec. O
 Start of Sec. J

Adams Twp



40

STA. 0+00
 P.K. # 389A



41

STA. 1+00
 R.R. Spiko # 390

