

O.D.O.T. DISTRICT 2 SURVEY OFFICE (USE ONLY)

PERSONNEL

REFERENCE NO. 41

SHEET 19 OF 46

NOTES HOMAN

DATE 7-21-09

ROUTE SR 101

H.C. HOMAN

WEATHER SUNNY

COUNTY SENECA

R.C. ROUSOS

TEMP. 85°F

TOWNSHIP ADAMS

DWG BY WHITAKER PID 101165

SECTION 20

T 3 N R 16 E

TYPE MONUMENT P.K./WASHER

ON SURFACE - ~~BELOW~~ ON

OFFSET  $\text{C}$  PAVEMENT 2' ~~ET~~ : RT

- TO - EDGE PAVEMENT

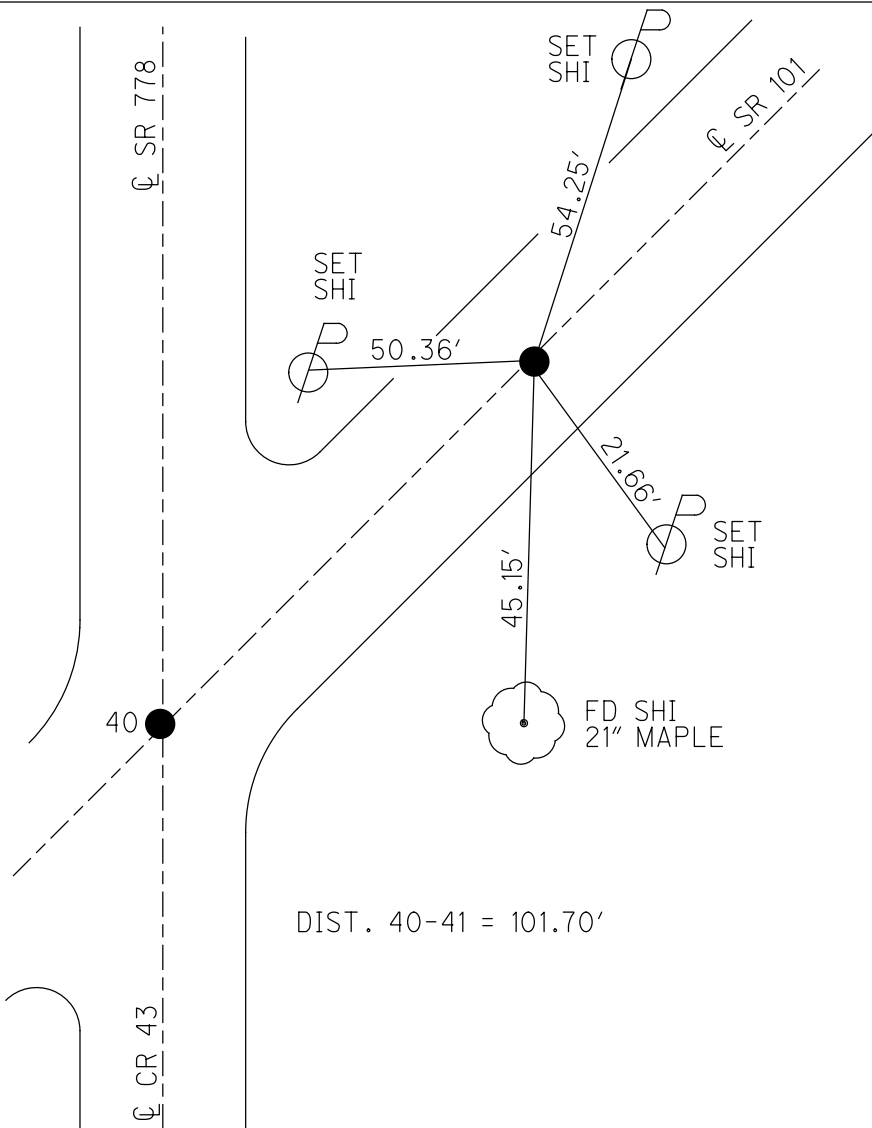
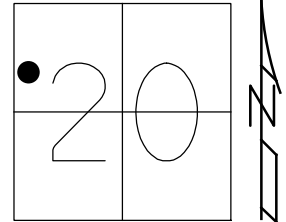
STATION: 510+78

HORIZ.DATUM: NAD83 (2011)

GEOID: NAVD88-2012A

GRID: NORTHING: 561744.998

EASTING: 1816130.320

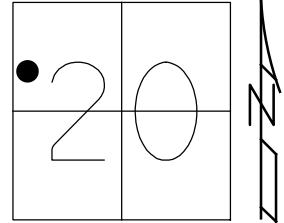


RECORD:  
 STA. 1+00  
 FD P.K.NAIL  
 ATOP R.R.SPIKE  
 SET P.K./WASHER  
 8/27/90, BARBOUR  
 FD P.K./WASHER  
 2/7/05, SAH  
 FD P.K./WASHER  
 REF41  
 7/21/09, DCH  
 SET MAG/WASHER  
 NEWREF41  
 10/8/09, DCH  
 FD MAG/WASHER  
 REF41  
 6/14/16  
 9/18/17, JFO  
 FD MAG/WASHER  
 REF 41  
 9/12/19  
 8/2/21,  
 6/6/22, DSA

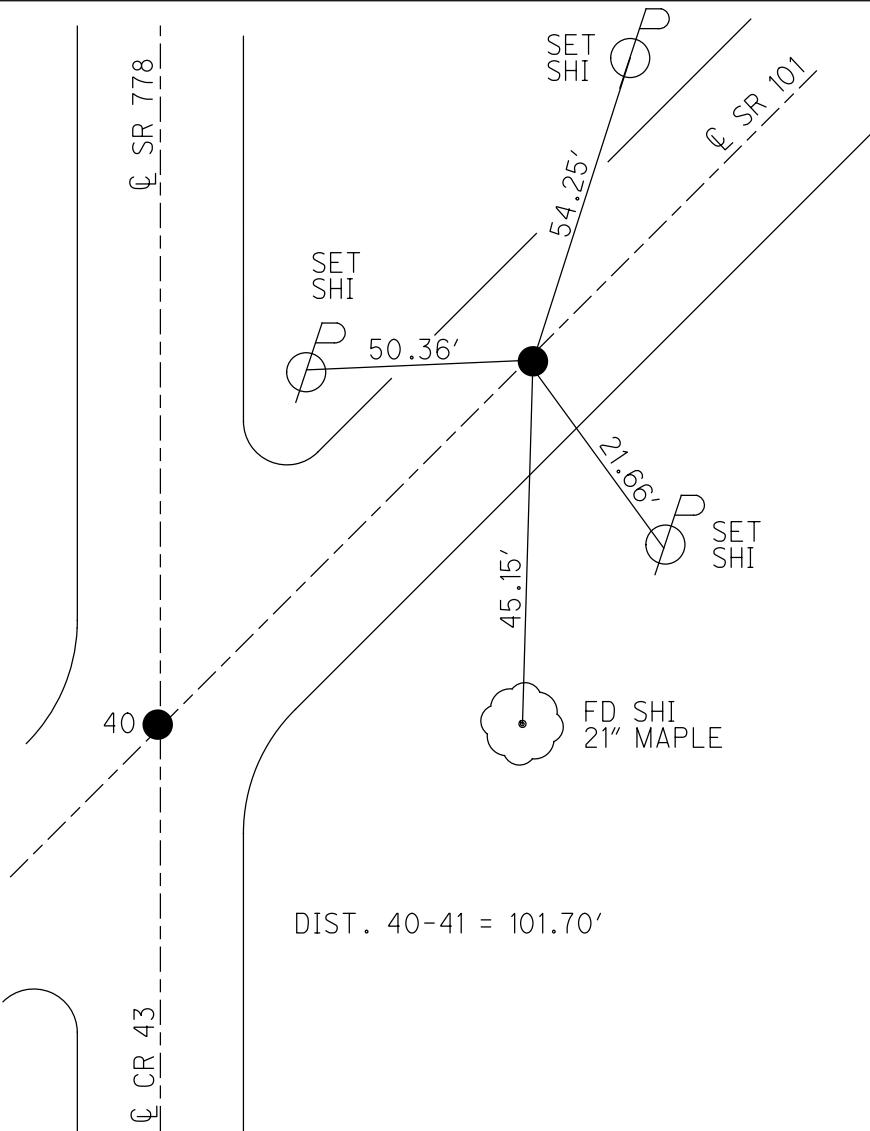
O.D.O.T. DISTRICT 2 SURVEY OFFICE (USE ONLY)

PERSONNEL \_\_\_\_\_ REFERENCE NO. 41 SHEET 19 OF 46  
 NOTES HOMAN DATE 7-21-09 ROUTE SR 101  
 H.C. HOMAN WEATHER SUNNY COUNTY SENECA  
 R.C. ROUSOS TEMP. 85°F TOWNSHIP ADAMS  
 SECTION 20  
 DWG BY MAHLER PID 100787 T 3 N R 16 E

TYPE MONUMENT P.K./WASHER  
 ON SURFACE - ~~BELOW~~ ON  
 OFFSET  $\varnothing$  PAVEMENT 2'  $\neq$  : RT  
- TO - EDGE PAVEMENT  
 STATION: 510+78



HORZ.DATUM: NAD83 (2011) GEOID: NAVD88-2012A  
 GRID: NORTHING: 561744.973 EASTING: 1816130.294



RECORD:  
 STA. 1+00  
 FD P.K.NAIL  
 ATOP R.R.SPIKE  
 SET P.K./WASHER  
 8/27/90, BARBOUR  
 FD P.K./WASHER  
 2/7/05, SAH  
 FD P.K./WASHER  
 REF41  
 7/21/09, DCH  
 SET MAG/WASHER  
 NEWREF41  
 10/8/09, DCH  
 FD MAG/WASHER  
 REF41  
 6/14/16  
 9/18/17, JFO

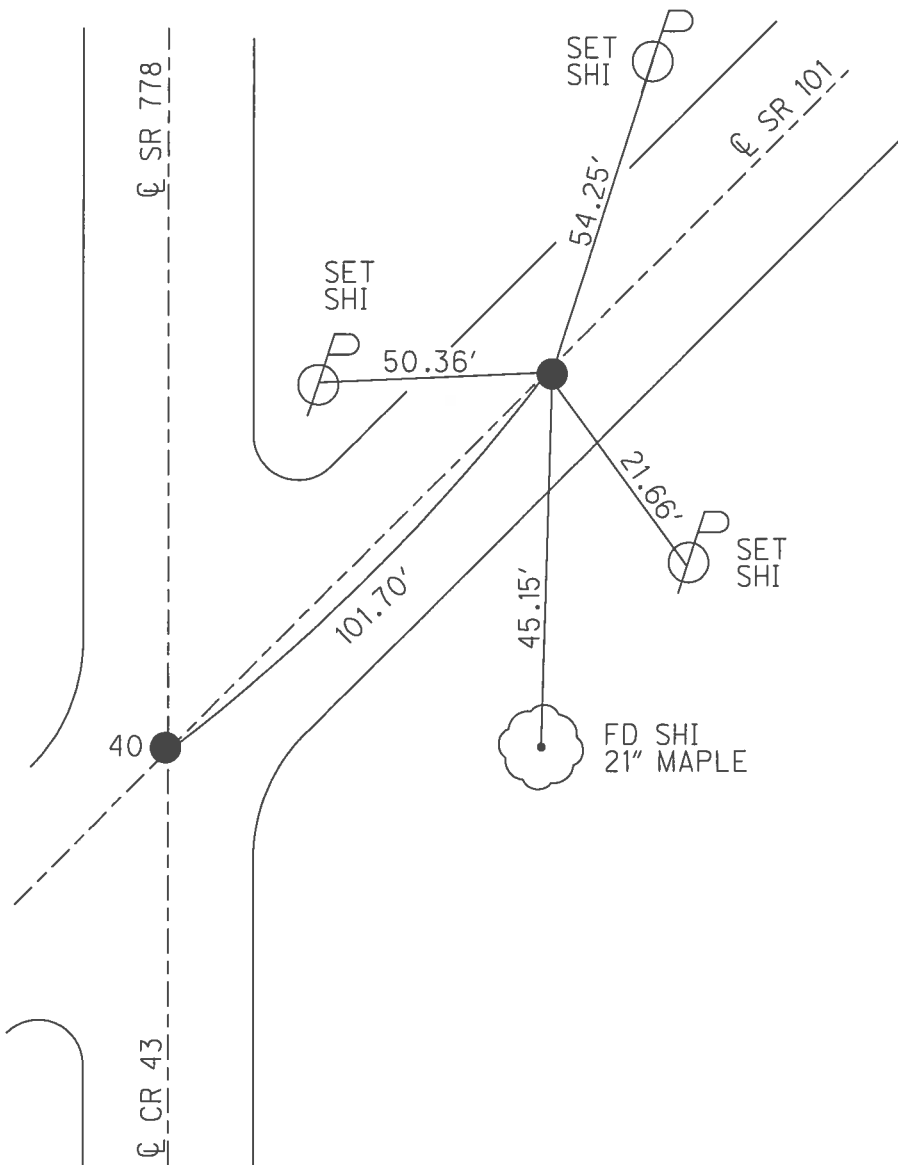
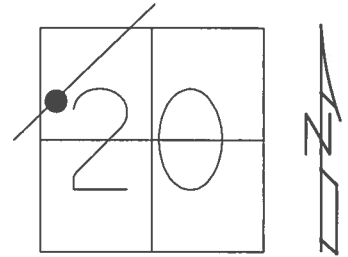
DIST. 40-41 = 101.70'

O.D.O.T. DISTRICT 2 SURVEY OFFICE (USE ONLY)

PERSONNEL \_\_\_\_\_ REFERENCE NO. 41 SHEET 19 OF 46

NOTES HOMAN DATE 7/21/09 ROUTE SR 101  
 H.C. HOMAN WEATHER SUNNY COUNTY SENECA  
 R.C. ROUSOS TEMP. 85° TOWNSHIP ADAMS  
 \_\_\_\_\_ SECTION 20  
 \_\_\_\_\_ T 3 N R 16 E

TYPE MONUMENT P.K./WASHER  
 ON SURFACE - ~~BELOW~~ ON  
~~LEFT~~ - ☉ PAV'T - RIGHT 2'  
- TO - EDGE PAVEMENT  
 S.L.M. 510+78  
 GRID: NORTHING: 561744.973 EASTING: 1816130.294

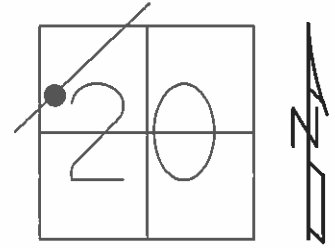


RECORD:  
 STA. 1+00  
 FD P.K.NAIL ATOP  
 R.R.SPIKE  
 SET P.K./WASHER  
 8/27/90  
 FD P.K./WASHER  
 2/7/05, SAH  
 SET MAG/WASHER  
 10/8/09, DCH  
 FD MAG/WASHER  
 REF 41  
 6/14/16, JFO  
 UNCOVERED  
 9/18/17, JFO

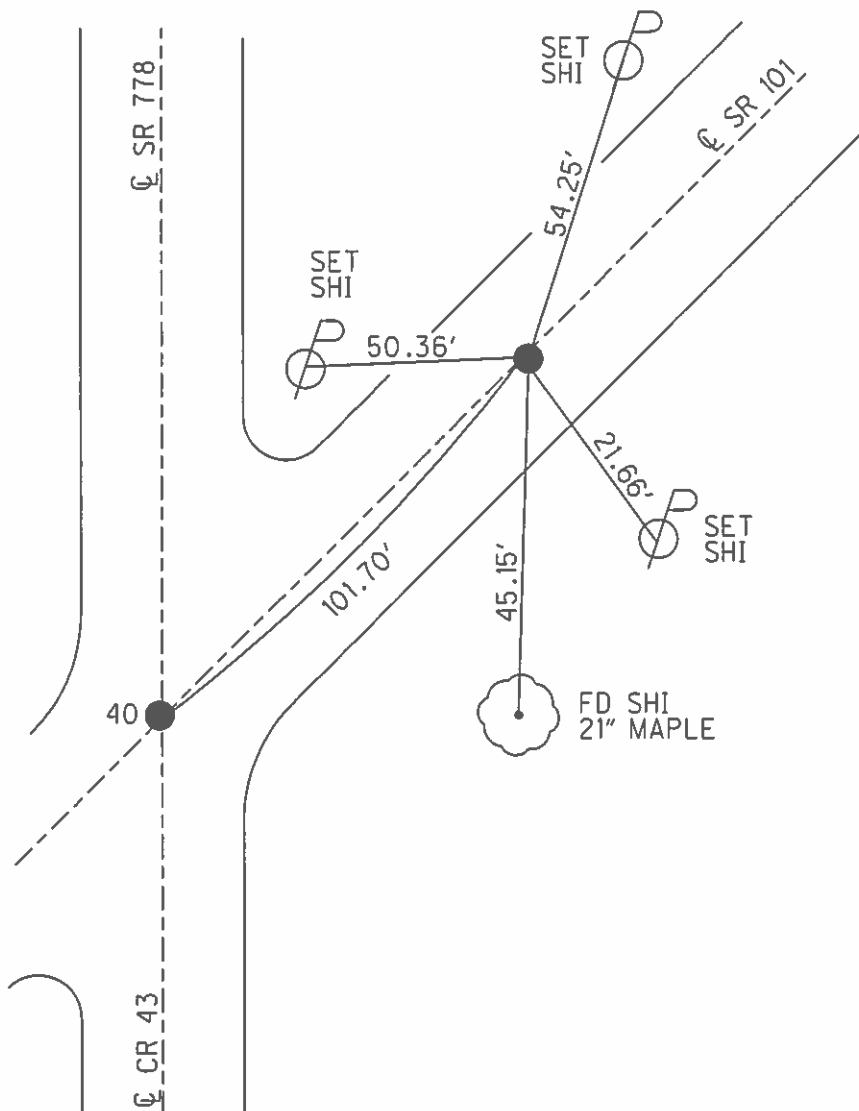
**O.D.O.T. DISTRICT 2 SURVEY OFFICE (USE ONLY)**

PERSONNEL	REFERENCE NO.	41	SHEET	19	OF	46
NOTES	HOMAN	DATE	7/21/09	ROUTE	SR 101	
H.C.	HOMAN	WEATHER	SUNNY	COUNTY	SENECA	
R.C.	ROUSOS	TEMP.	85°	TOWNSHIP	ADAMS	
				SECTION	20	
				T	3	N
				R	16	E

TYPE MONUMENT P.K./WASHER  
 ON SURFACE - ~~BELOW~~ ON  
~~LEFT~~ - Q PAV'T - RIGHT 2'  
- TO - EDGE PAVEMENT  
 S.L.M. 510+78



GRID: NORTHING: 561745.056 EASTING: 1816130.260



RECORD:  
 STA. 1+00  
 FD P.K.NAIL ATOP  
 R.R.SPIKE  
 SET P.K./WASHER  
 8/27/90  
 FD P.K./WASHER  
 2/7/05, SAH  
 SET MAG/WASHER  
 10/8/09, DCH

O.D.O.T. DISTRICT 2 SURVEY OFFICE

PERSONNEL

REFERENCE NO. 41

SHEET 15 OF 41

NOTES RIPPLE

H.C. BARBOUR

R.C. GEYMAN

DATE 8/27/90

WEATHER SUNNY

TEMP. 92°

ROUTE SR#101

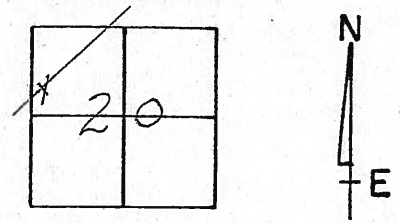
COUNTY SENECA

TOWNSHIP ADAMS

SECTION 20

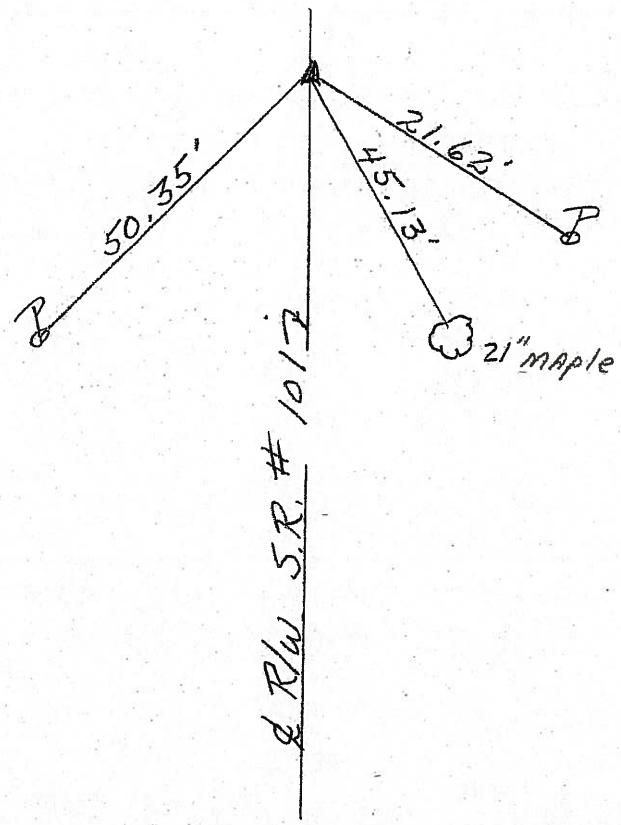
T. 3 N. R. 16 E.

TYPE MONUMENT SET P.K. & WASHER  
ON SURFACE - BELOW P.K. NAIL ATOP RR SPIKE  
LEFT - ¢ PAV'T. - RIGHT 2' RT. ¢ PAV'T.  
TO EDGE PAVEMENT  
S.L.M. \_\_\_\_\_



510 +78

1+00



fd  
2-7-05  
SAA

O.D.O.T. DISTRICT 2 SURVEY OFFICE

PERSONNEL

REFERENCE NO. 41A

SHEET 15 OF 41

NOTES RIPPLE

H.C. BARBOUR

R.C. GEYMAN

DATE 8/27/90

WEATHER SUNNY

TEMP. 92°

ROUTE SR.#101

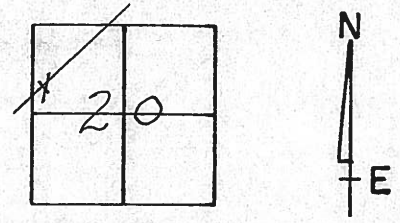
COUNTY SENECA

TOWNSHIP ADAMS

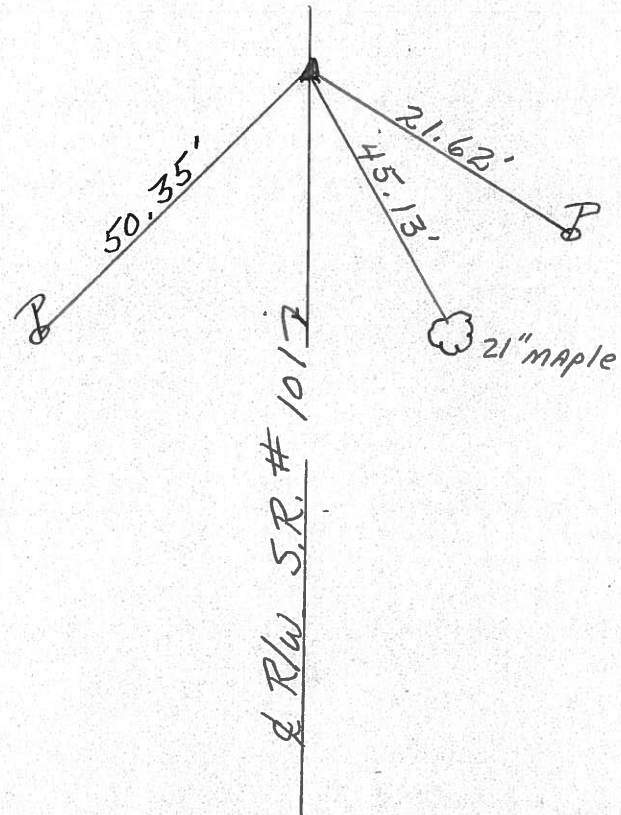
SECTION 20

T.3 N R.16 E

TYPE MONUMENT SET P.K. & WASHER  
ON SURFACE - BELOW P.K. NAIL ATop RR SPIKE  
LEFT - ¢ PAV'T. - RIGHT 2' RT. & PAV'T.  
\_\_\_\_ TO \_\_\_\_ EDGE PAVEMENT  
S.L.M. \_\_\_\_\_



1+00



County Seneca S.R. 101

Date 6-26-79

Township Adams

Weather Fair

Section 2

Temp. 70°

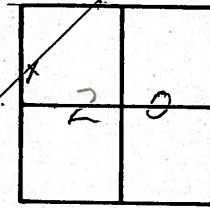
T<sub>3</sub>N, R<sub>16</sub>E

Personnel Schneider

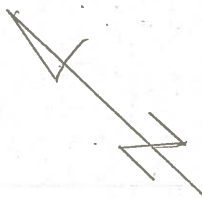
Masser

Barbour

41

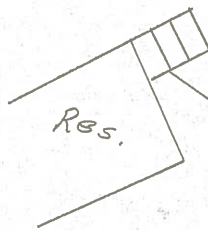


~~# 43 A~~

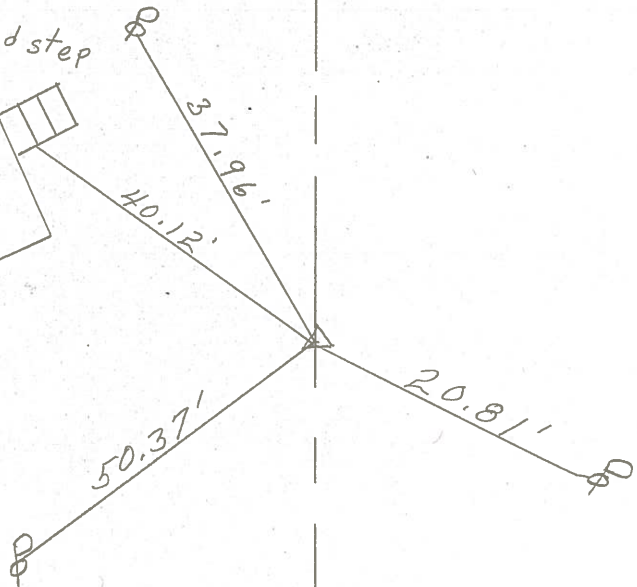


¢ S.R. # 101

Top 2nd step



Res.



1+00

R.R. spk. on ¢ R/w

2" down 2 1/2' Rt. of ¢

Reset P. K. Nail

PERSONNEL	TITLE	PERSONNEL	TITLE
Krabill			
Kowaleski			
Geymah			
Bruggemah			

COUNTY Seneca DATE 2-10-64  
 S. R. # 101 WEATHER \_\_\_\_\_  
 SEC. \_\_\_\_\_ TEMP. \_\_\_\_\_

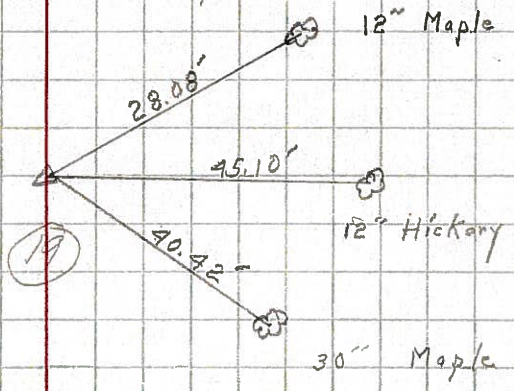
DESCRIPTION \_\_\_\_\_ LEFT \_\_\_\_\_ CENTER LINE \_\_\_\_\_ RIGHT \_\_\_\_\_ JOB NO. \_\_\_\_\_

39

STA. 69+04.92  
 P.K. # 389

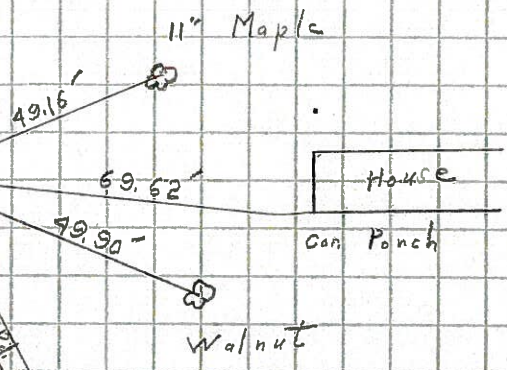
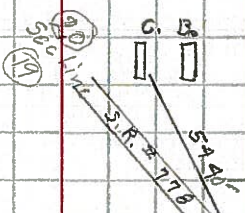
End of Sec. O  
 Start of Sec. J

Adams Turn



40

STA. 0+00  
 P.K. # 389A



41

STA. 1+00  
 R.R. Sp'k # 390

