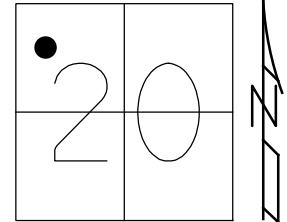


O.D.O.T. DISTRICT 2 SURVEY OFFICE (USE ONLY)

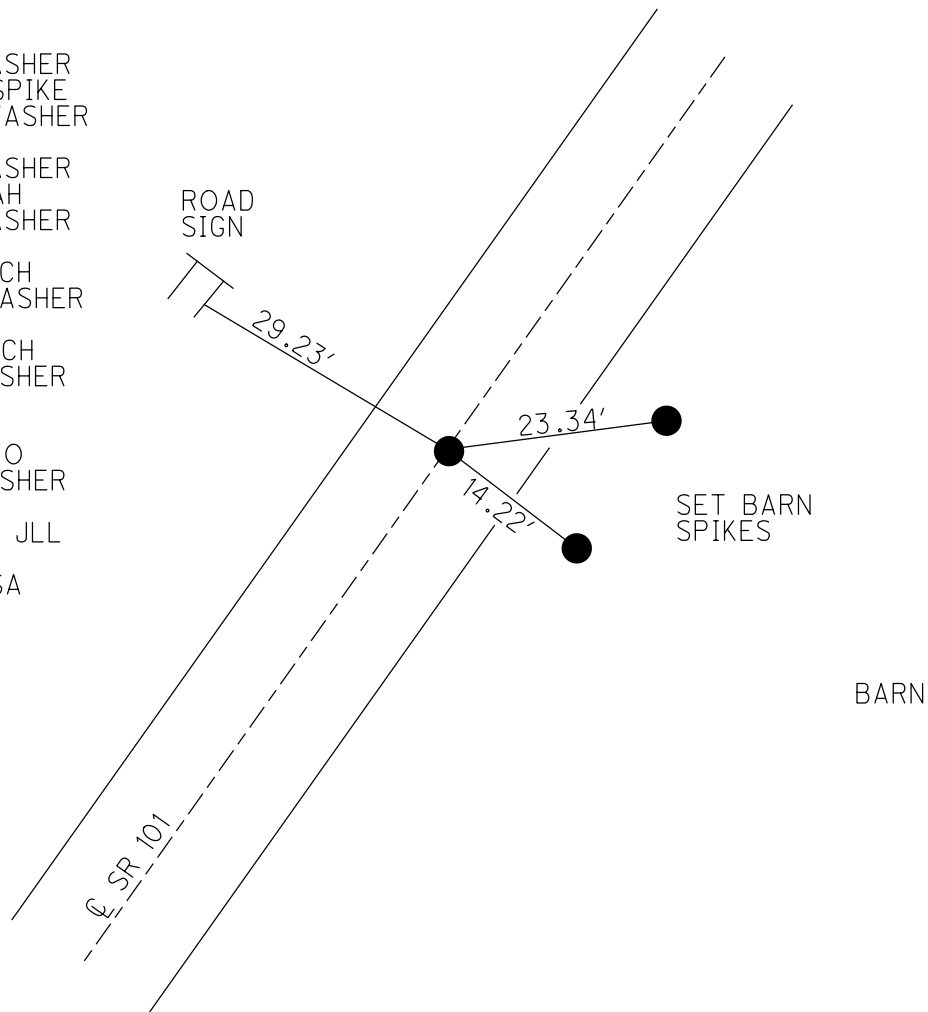
PERSONNEL _____ REFERENCE NO. 42 SHEET 20 OF 46
 NOTES AUBLE DATE 8/2/21 ROUTE SR 101
 H.C. AUBLE WEATHER SUNNY COUNTY SENECA
 R.C. NIESE TEMP. 85°F TOWNSHIP ADAMS
 DWG BY RHOADES PID 101165 SECTION 20
 T 3 N R 16 E

TYPE MONUMENT MAG/WASHER
 ON SURFACE - ~~BELOW~~ ON
 OFFSET ☐ PAVEMENT ON LT : RT
- TO - EDGE PAVEMENT
 STATION: 517+79



HORZ. DATUM: NAD83 (2011) GEOID: NAVD88-2012A
 GRID: NORTHING: 562272.665 EASTING: 1816590.285

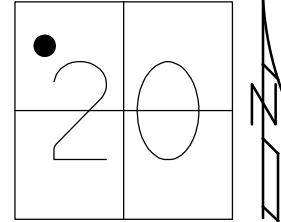
RECORD:
 STA. 8+00
 FD P.K./WASHER
 ATOP R.R.SPIKE
 SET P.K./WASHER
 8/27/90
 FD P.K./WASHER
 2/7/05, SAH
 FD P.K./WASHER
 REF 42
 7/21/09, DCH
 SET MAG/WASHER
 NEWREF 42
 10/5/09, DCH
 FD MAG/WASHER
 REF 42
 6/14/16
 9/18/17, JFO
 FD MAG/WASHER
 REF 42
 9/25/2019, JLL
 8/2/21,
 6/6/22, DSA



O.D.O.T. DISTRICT 2 SURVEY OFFICE (USE ONLY)

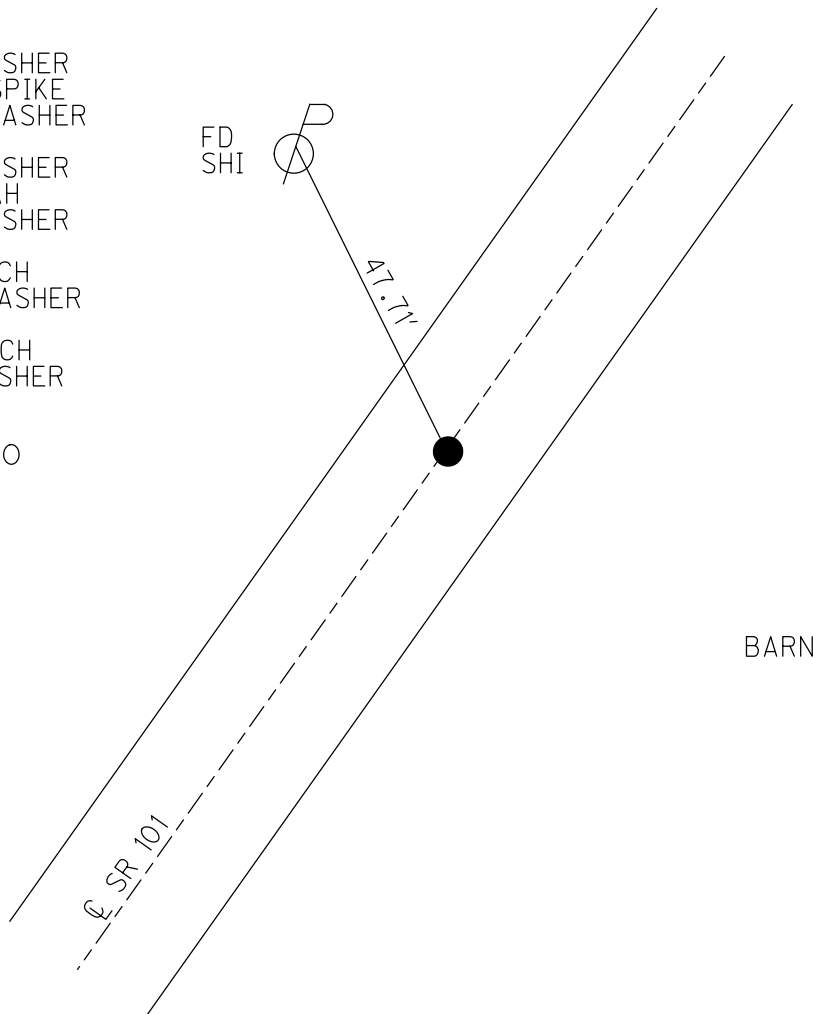
PERSONNEL _____ REFERENCE NO. 42 SHEET 20 OF 46
 NOTES HOMAN DATE 7-21-09 ROUTE SR 101
 H.C. HOMAN WEATHER SUNNY COUNTY SENECA
 R.C. ROUSOS TEMP. 85°F TOWNSHIP ADAMS
 _____ SECTION 20
 DWG BY MAHLER PID 100787 T 3 N R 16 E

TYPE MONUMENT P.K./WASHER
 ON SURFACE - ~~BELOW~~ ON
 OFFSET 0 PAVEMENT ON LT : RT
- TO - EDGE PAVEMENT
 STATION: 517+79



HORIZ.DATUM: NAD83 (2011) GEOID: NAVD88-2012A
 GRID: NORTHING: 562272.653 EASTING: 1816590.281

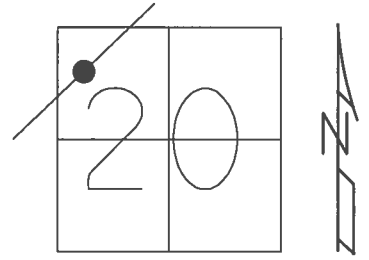
RECORD:
 STA.8+00
 FD P.K./WASHER
 ATOP R.R.SPIKE
 SET P.K./WASHER
 8/27/90
 FD P.K./WASHER
 2/7/05, SAH
 FD P.K./WASHER
 REF42
 7/21/09, DCH
 SET MAG/WASHER
 NEWREF42
 10/5/09, DCH
 FD MAG/WASHER
 REF42
 6/14/16
 9/18/17, JFO



O.D.O.T. DISTRICT 2 SURVEY OFFICE (USE ONLY)

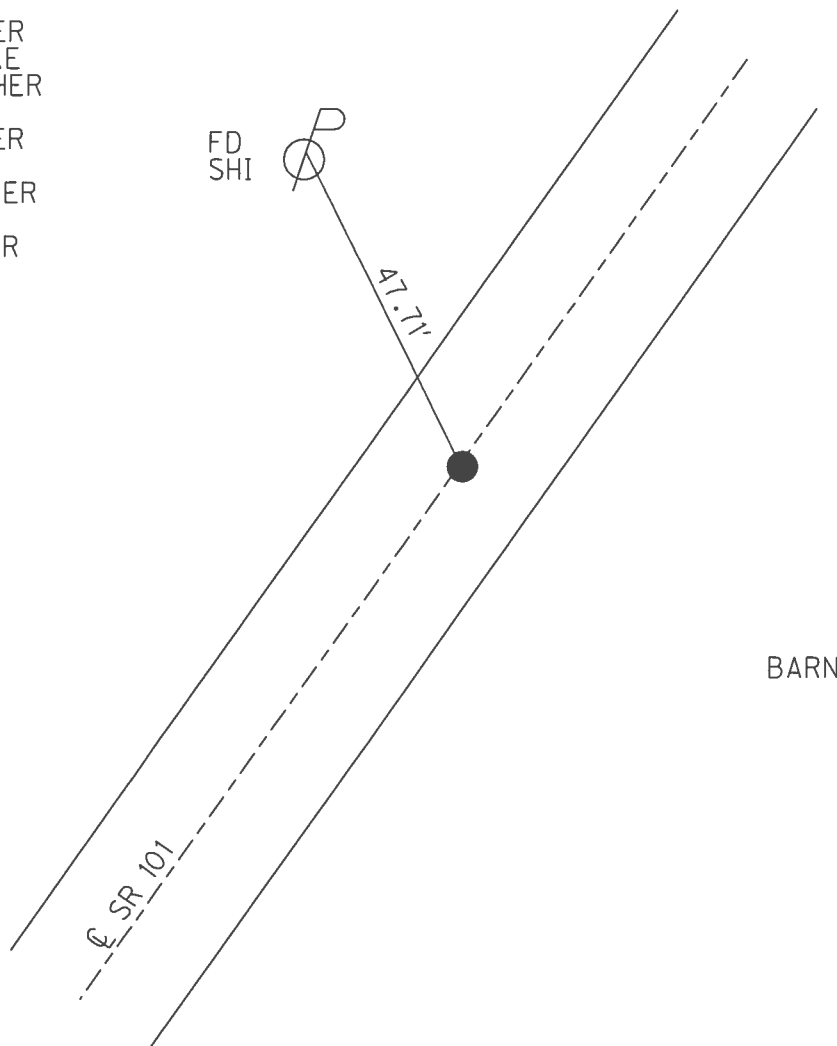
PERSONNEL _____ REFERENCE NO. 42 SHEET 20 OF 46
 NOTES HOMAN DATE 7/21/09 ROUTE SR 101
 H.C. HOMAN WEATHER SUNNY COUNTY SENECA
 R.C. ROUSOS TEMP. 85° TOWNSHIP ADAMS
 _____ SECTION 20
 _____ T 3 N R 16 E

TYPE MONUMENT P.K./WASHER
 ON SURFACE - ~~BELOW~~ ON
 LEFT - ☉ PAV'T - ~~RIGHT~~ 0.3'
 _____ TO _____ EDGE PAVEMENT
 S.L.M. 517+79



GRID: NORTHING: 562272.653 EASTING: 1816590.281

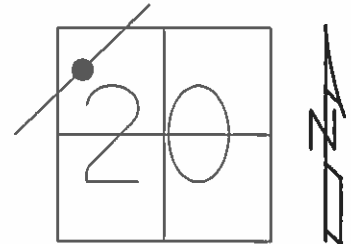
RECORD:
 STA. 8+00
 FD P.K./WASHER
 ATOP R.R.SPIKE
 SET P.K./WASHER
 8/27/90
 FD P.K./WASHER
 2/7/05, SAH
 SET MAG/WASHER
 10/5/09, DCH
 FD MAG/WASHER
 REF 42
 6/14/16, JFO
 UNCOVERED
 9/18/17, JFO



O.D.O.T. DISTRICT 2 SURVEY OFFICE (USE ONLY)

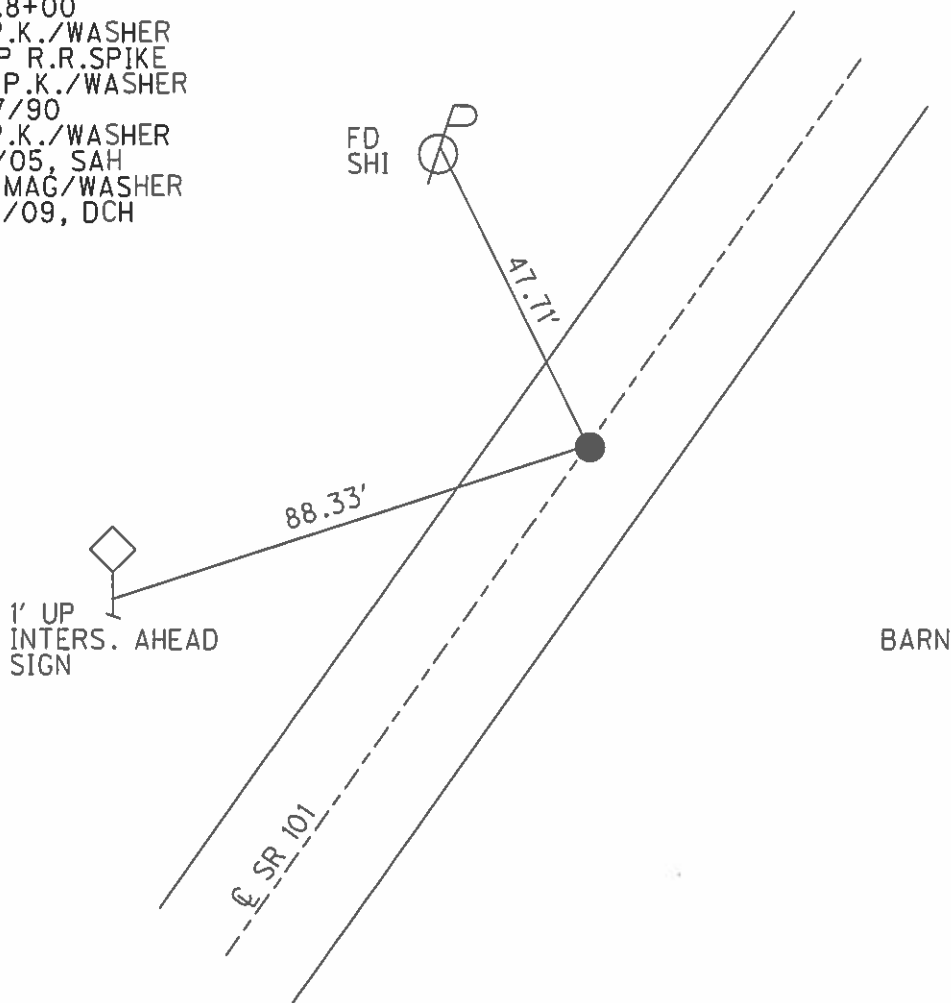
PERSONNEL _____ REFERENCE NO. 42 SHEET 20 OF 46
 NOTES HOMAN DATE 7/21/09 ROUTE SR 101
 H.C. HOMAN WEATHER SUNNY COUNTY SENECA
 R.C. ROUSOS TEMP. 85° TOWNSHIP ADAMS
 _____ SECTION 20
 _____ T 3 N R 16 E

TYPE MONUMENT P.K./WASHER
 ON SURFACE - ~~BELOW~~ ON
 LEFT - ☉ PAV'T - RIGHT ON
 _____ TO _____ EDGE PAVEMENT
 S.L.M. 517+79



GRID: NORTHING: 562272.712 EASTING: 1816590.247

RECORD:
 STA. 8+00
 FD P.K./WASHER
 ATOP R.R. SPIKE
 SET P.K./WASHER
 8/27/90
 FD P.K./WASHER
 2/7/05, SAH
 SET MAG/WASHER
 10/5/09, DCH



O.D.O.T. DISTRICT 2 SURVEY OFFICE

PERSONNEL

REFERENCE NO. 42

SHEET 16 OF 41

NOTES RIPPLE

H.C. BARBOUR

R.C. GEYMAN

DATE 8/27/90

WEATHER SUNNY

TEMP. 92°

ROUTE SR#101

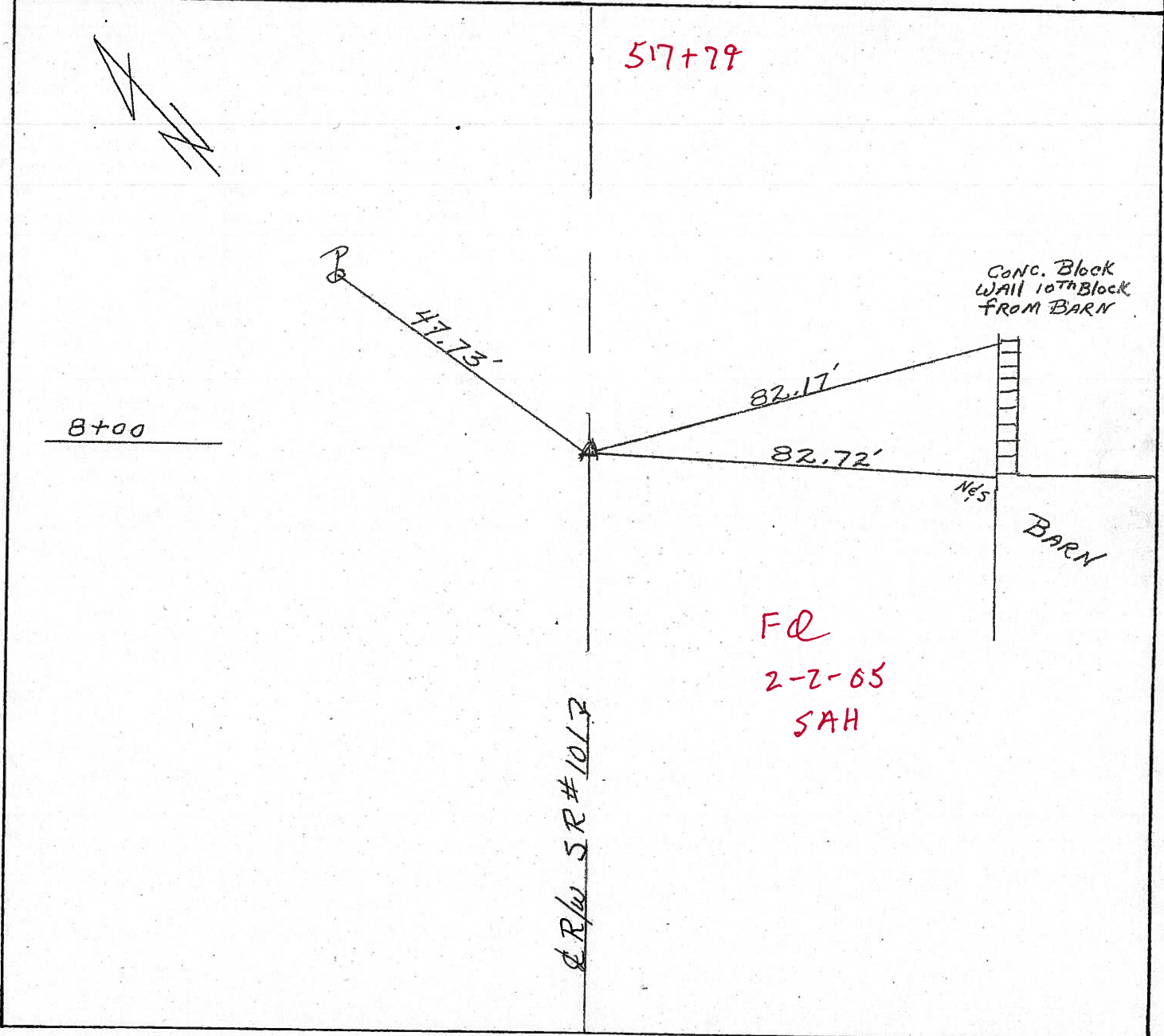
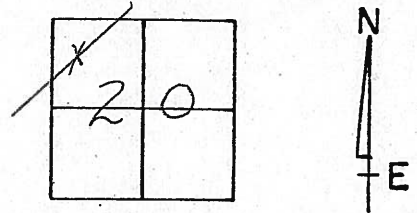
COUNTY SENECA

TOWNSHIP ADAMS

SECTION 20

T.3 N R 16 E

TYPE MONUMENT SET P.K. & WASHOR
ON SURFACE - BELOW P.K. & WASHOR A TOP RR SPIKE
LEFT - CL PAV'T. - RIGHT CL PAV'T.
TO EDGE PAVEMENT
S.L.M. _____



O.D.O.T. DISTRICT 2 SURVEY OFFICE

PERSONNEL

REFERENCE NO. 42

SHEET 16 OF 41

NOTES RIPPLE

H.C. BARBOUR

R.C. GEYMAN

DATE 8/27/90

WEATHER SUNNY

TEMP. 92°

ROUTE SR.#101

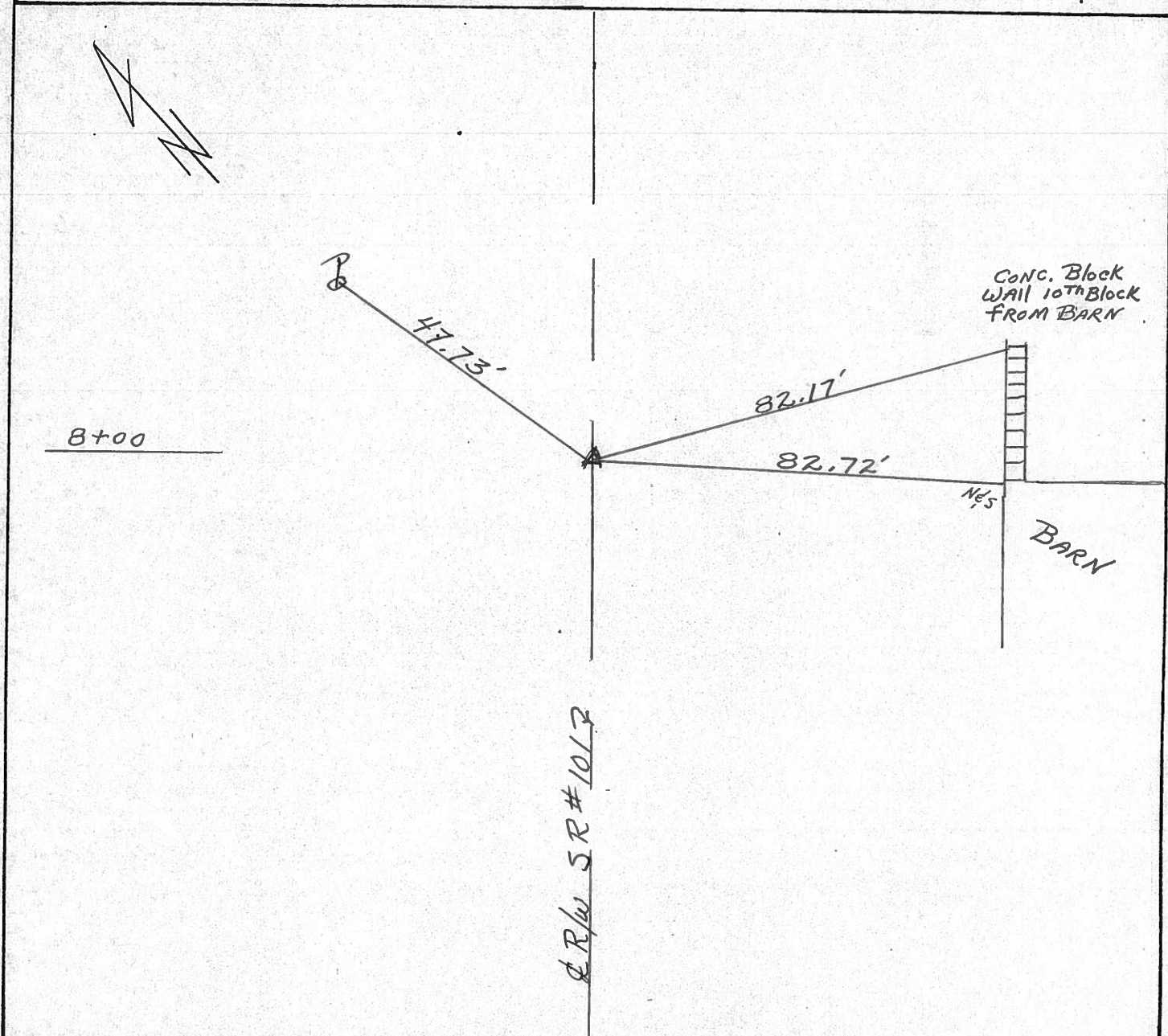
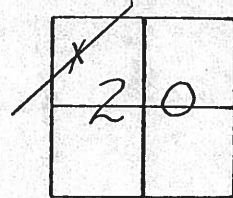
COUNTY Seneca

TOWNSHIP ADAMS

SECTION 20

T. 3 N. R. 16 E.

TYPE MONUMENT Set PK. & washer
ON SURFACE - BELOW PK. & washer A Top RR spike
LEFT - ☉ PAV'T. - RIGHT ☉ PAV'T.
____ TO ____ EDGE PAVEMENT
S.L.M. _____



County Seneca S.R. # 101

Date 6-26-79

Township Adams

Weather Fair

Section 20

Temp. 70°

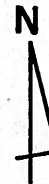
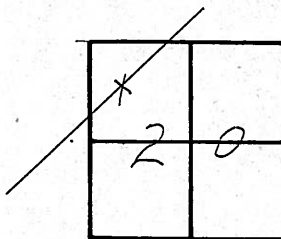
T 3 N, R 16 E

Personnel Schneider

Mosser

Barbour

42

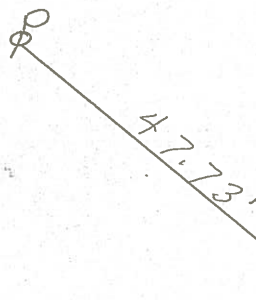


~~458~~



♀ S.R. # 101

Conc-block wall 10th blo from Barn



8+00

R.R. spk. on ♀ R/w.

2 1/2" down

Re set P.K. Nail

PERSONNEL TITLE PERSONNEL TITLE

COUNTY Seneca DATE 2-10-64

Krabill _____

S. R. 101 WEATHER _____

Kowaleski _____

Geymah _____

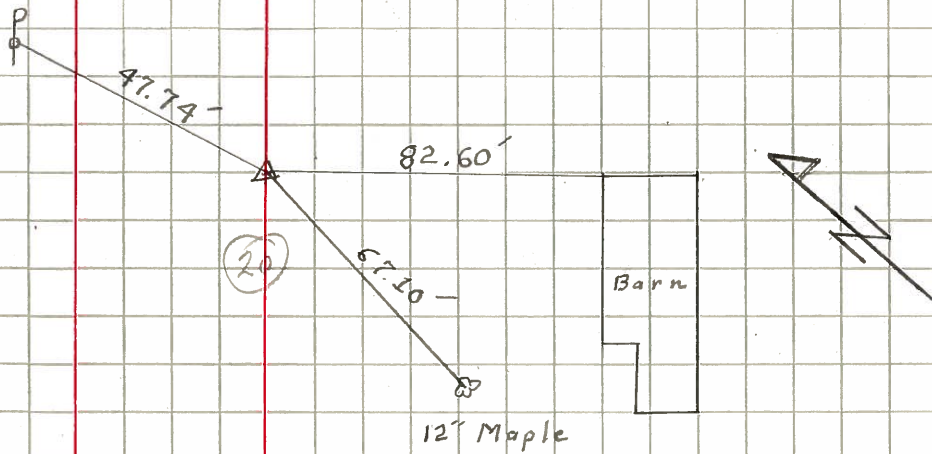
SEC. _____ TEMP. _____

Bruggeman _____

DESCRIPTION LEFT CENTER LINE RIGHT JOB NO.

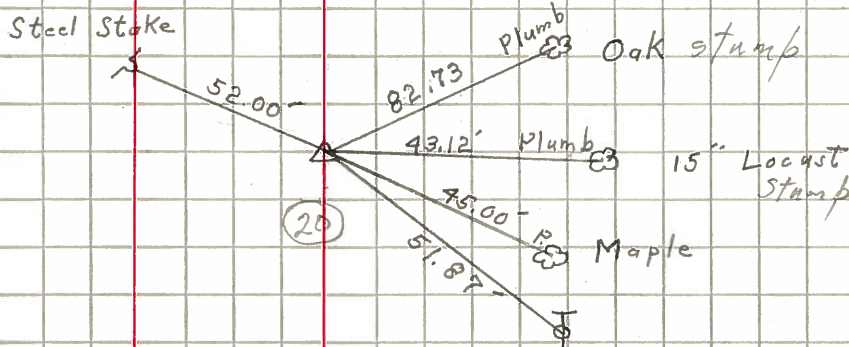
42

STA. 8+00
Iron Pin
391



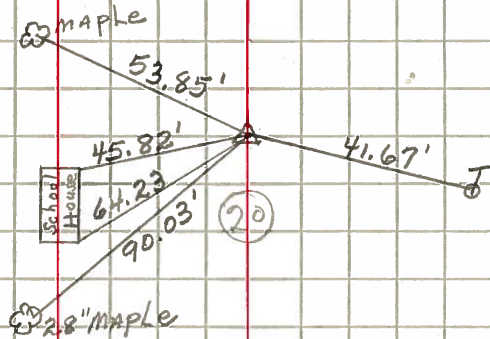
43

STA. 21+50
Iron Pin
392



44

STA. 29+00
Iron Pin
393



45

STA. 46+00
IRON PIN
394

