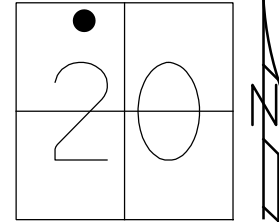


O.D.O.T. DISTRICT 2 SURVEY OFFICE (USE ONLY)

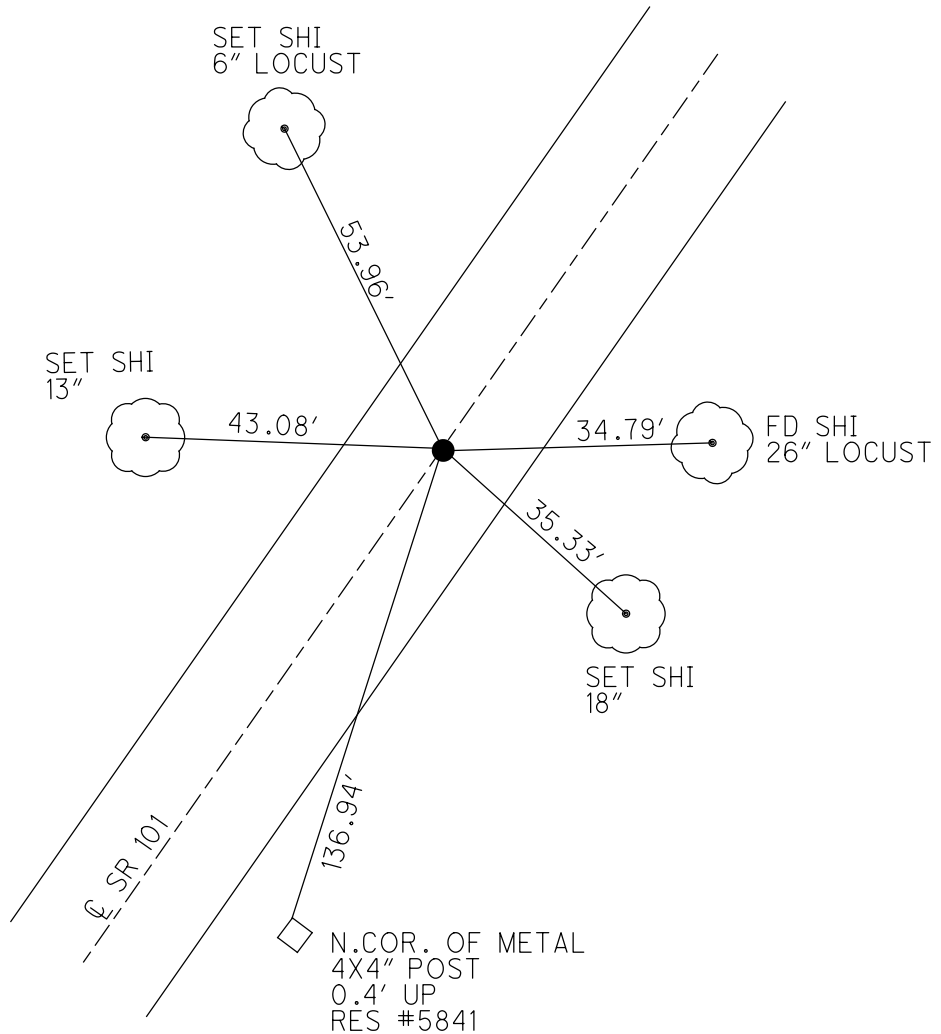
PERSONNEL _____ REFERENCE NO. 43 SHEET 21 OF 46
 NOTES LEU DATE 9-25-19 ROUTE SR 101
 H.C. LEU WEATHER CLOUDY COUNTY SENECA
 R.C. AUBLE TEMP. 77°F TOWNSHIP ADAMS
 NASON SECTION 20
 DWG BY WHITAKER PID 101165 T 3 N R 16 E

TYPE MONUMENT R.R.SPIKE
~~ON SURFACE~~ - BELOW 7 1/4"
 OFFSET \varnothing PAVEMENT 1.1' LT : ~~RT~~
10.7' TO LT EDGE PAVEMENT
 STATION: 531+16

HORZ.DATUM: NAD83 2009 GEOID: NAVD88 2009
 GRID: NORTHING: 563284.576 EASTING: 1817480.462



RECORD:
 STA. 21+50
 FD P.K.NAIL
 ATOP R.R.SPIKE
 SET P.K./WASHER
 8/27/90
 FD P.K./WASHER
 2/7/05, SAH
 FD P.K./WASHER
 REF43
 7/21/09, DCH
 SET MAG/WASHER
 NEWREF43
 10/5/09, DCH
 D.N.F.
 6/14/16, JFO
 FD R.R.SPIKE
 7 1/4" DOWN
 REF 43
 9/25/19, JLL
 FD R.R.SPIKE
 REF 43
 8/2/21,
 6/6/22, DSA



O.D.O.T. DISTRICT 2 SURVEY OFFICE (USE ONLY)

PERSONNEL

REFERENCE NO. 43

SHEET 21 OF 46

NOTES HOMAN

DATE 7-21-09

ROUTE SR 101

H.C. HOMAN

WEATHER SUNNY

COUNTY SENECA

R.C. ROUSOS

TEMP. 85°F

TOWNSHIP ADAMS

SECTION 20

DWG BY MAHLER PID 100787

T 3 N R 16 E

TYPE MONUMENT P.K./WASHER

ON SURFACE - ~~BELOW~~ ON

OFFSET Q PAVEMENT ON LT : RT

- TO - EDGE PAVEMENT

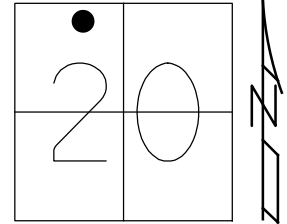
STATION: 531+16

HORZ. DATUM: NAD83 2009

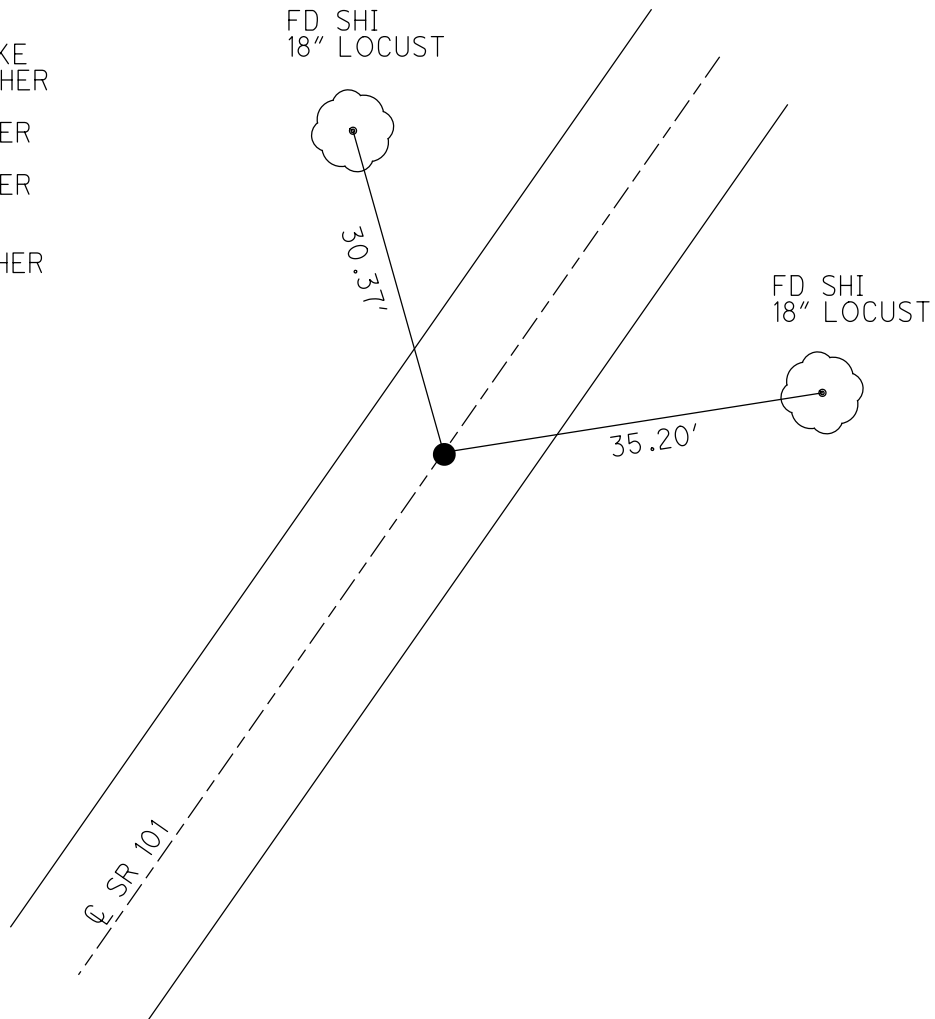
GEOID: NAVD88 2009

GRID: NORTHING: 563802.158

EASTING: 1818022.005



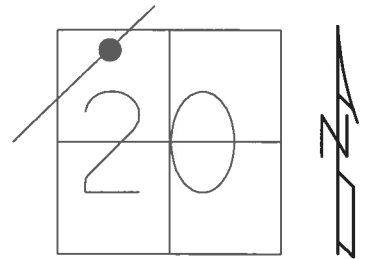
RECORD:
 STA. 21+50
 FD P.K.NAIL
 ATOP R.R.SPIKE
 SET P.K./WASHER
 8/27/90
 FD P.K./WASHER
 2/7/05, SAH
 FD P.K./WASHER
 REF43
 7/21/09, DCH
 SET MAG/WASHER
 NEWREF43
 10/5/09, DCH
 D.N.F.
 6/14/16, JFO



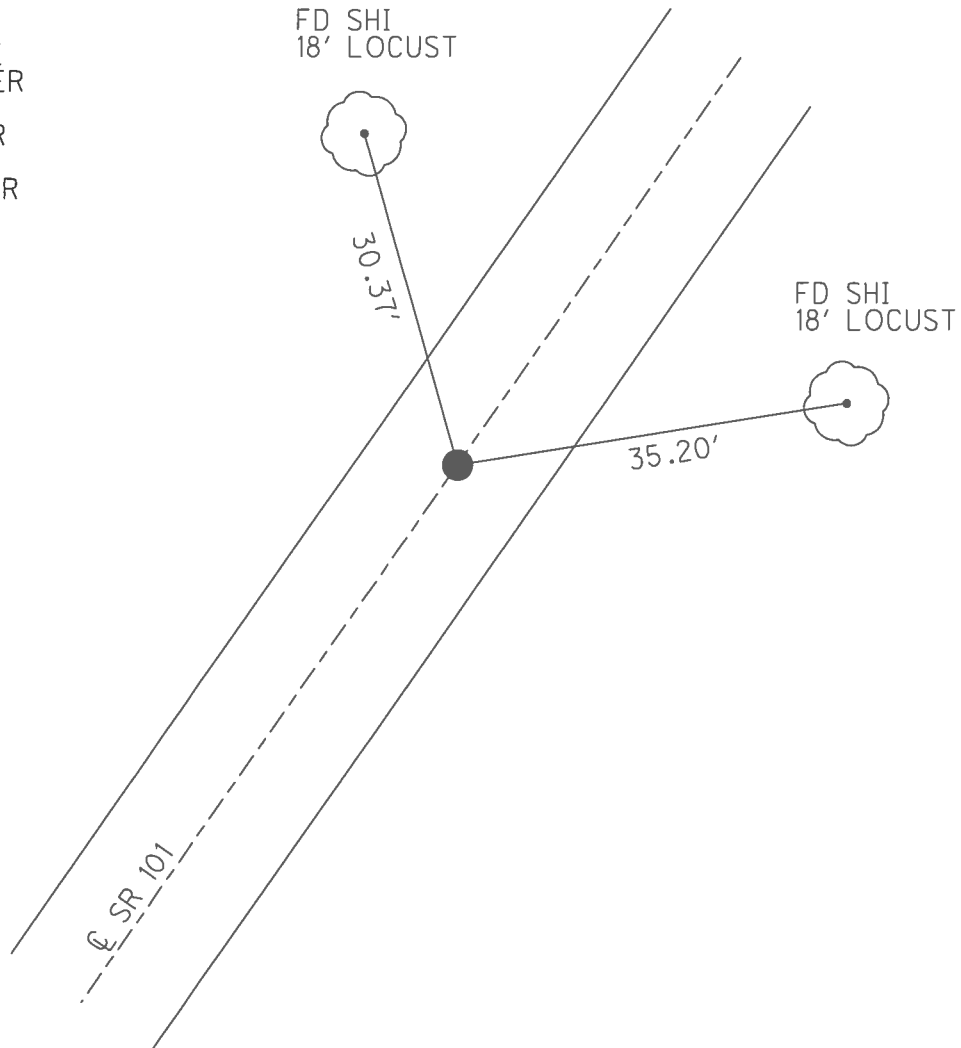
O.D.O.T. DISTRICT 2 SURVEY OFFICE (USE ONLY)

PERSONNEL _____ REFERENCE NO. 43 SHEET 21 OF 46
 NOTES HOMAN DATE 7/21/09 ROUTE SR 101
 H.C. HOMAN WEATHER SUNNY COUNTY SENECA
 R.C. ROUSOS TEMP. 85° TOWNSHIP ADAMS
 _____ SECTION 20
 _____ T 3 N R 16 E

TYPE MONUMENT P.K./WASHER
 ON SURFACE - ~~BELOW~~ ON
 LEFT - ☉ PAV'T - RIGHT ON
 _____ TO _____ EDGE PAVEMENT
 S.L.M. 531+16
 GRID: NORTHING: - _____ EASTING: - _____



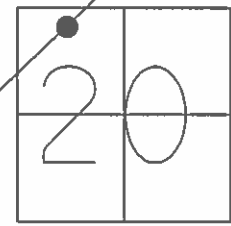
RECORD:
 STA. 21+50
 FD P.K.NAIL
 ATOP R.R.SPIKE
 SET P.K./WASHER
 8/27/90
 FD P.K./WASHER
 2/7/05, SAH
 SET MAG/WASHER
 10/5/09, DCH
 D.N.F.
 6/14/16, JFO



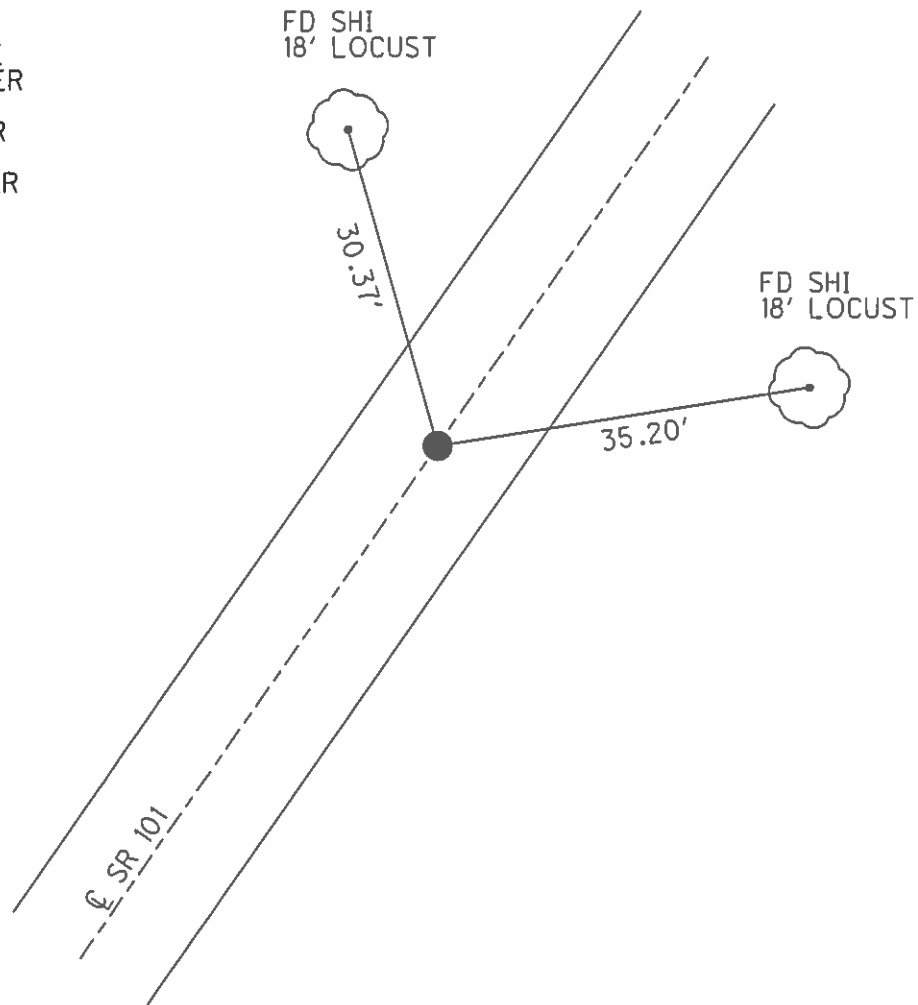
O.D.O.T. DISTRICT 2 SURVEY OFFICE (USE ONLY)

PERSONNEL	REFERENCE NO.	<u>43</u>	SHEET	<u>21</u>	OF	<u>46</u>
NOTES	HOMAN	DATE	<u>7/21/09</u>	ROUTE	<u>SR 101</u>	
H.C.	HOMAN	WEATHER	<u>SUNNY</u>	COUNTY	<u>SENECA</u>	
R.C.	ROUSOS	TEMP.	<u>85°</u>	TOWNSHIP	<u>ADAMS</u>	
				SECTION	<u>20</u>	
				T	<u>3</u>	N
				R	<u>16</u>	E

TYPE MONUMENT P.K./WASHER
 ON SURFACE - ~~BELOW~~ ON
 LEFT - ☐ PAV'T - RIGHT ON
 TO EDGE PAVEMENT
 S.L.M. 531+16



RECORD:
 STA. 21+50
 FD P.K.NAIL
 ATOP R.R.SPIKE
 SET P.K./WASHER
 8/27/90
 FD P.K./WASHER
 2/7/05, SAH
 SET MAG/WASHER
 10/5/09, DCH



GRID: NORTHING: 563802.158 EASTING: 1818022.005

O.D.O.T. DISTRICT 2 SURVEY OFFICE

PERSONNEL

REFERENCE NO. 43

SHEET 17 OF 41

NOTES RIPPLE

H.C. BARBOUR

R.C. GEYMAN

DATE 8/27/90

WEATHER SUNNY

TEMP. 92°

ROUTE SR#101

COUNTY SENECA

TOWNSHIP ADAMS

SECTION 20

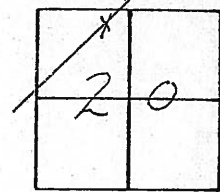
T3 N R 16 E

TYPE MONUMENT Set P.K. & washer
ON SURFACE - BELOW PK. A Top RR spike

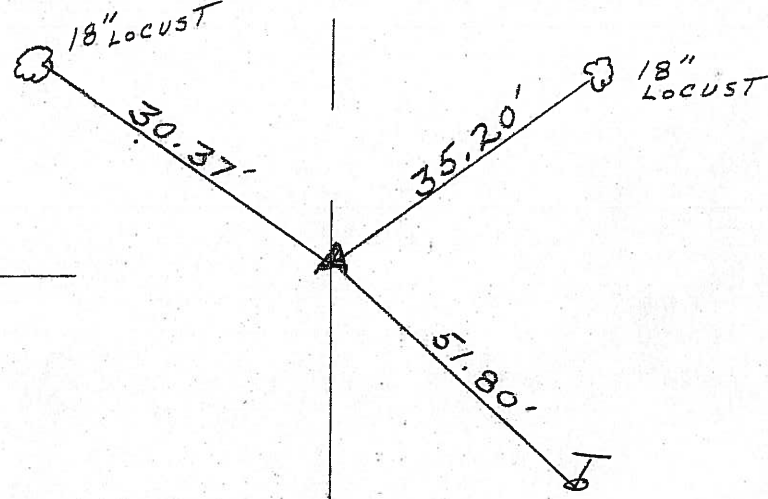
LEFT - CL PAV'T. - RIGHT _____

_____ TO _____ EDGE PAVEMENT

S.L.M. _____



531 +16



CL R/W SR#1017

Fd
2-7-05
SAH

O.D.O.T. DISTRICT 2 SURVEY OFFICE

PERSONNEL

REFERENCE NO. 43

SHEET 17 OF 41

NOTES Ripple

H.C. BARBOUR

R.C. GEYMAN

DATE 8/27/90

WEATHER SUNNY

TEMP. 92°

ROUTE SR#101

COUNTY SENECA

TOWNSHIP ADAMS

SECTION 20

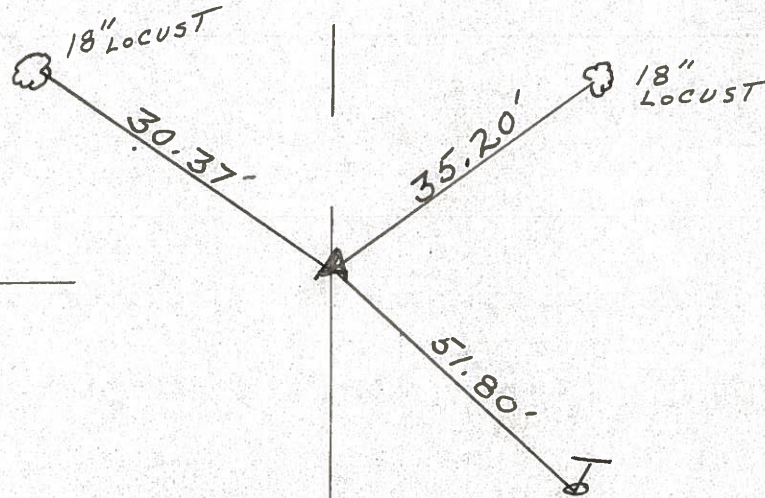
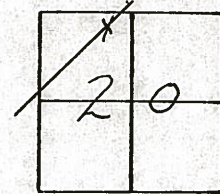
T.3 N R.16 E

TYPE MONUMENT Set P.K. & washer
ON SURFACE - BELOW P.K. A Top RR spike

LEFT - ☉ PAV'T. - RIGHT _____

_____ TO _____ EDGE PAVEMENT

S.L.M. _____



RR/w SR#1017

County Seneca S.R. # 101

Date 6-26-79

Township Adams

Weather Fair

Section 20

Temp. 70°

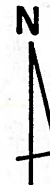
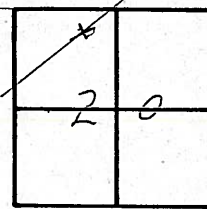
T₃N, R₁₆E

Personnel Schneider

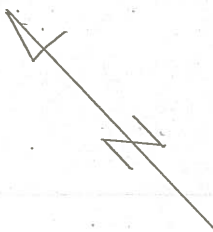
Mosser

Barbour

43



~~# 452~~



☐ S.R. # 101

11" Locust

12" Locust



70.12

34.43'

55.94

15" Locust

51.84'

21+50

R.R. spt. on ☐ R/W

3" down

Reset P.K. Nail



PERSONNEL TITLE PERSONNEL TITLE

COUNTY Seneca

DATE 2-10-64

Knabill

Kowaleski

Geyman

Bruggeman

S. R. 101

WEATHER _____

SEC. _____

TEMP. _____

DESCRIPTION _____

LEFT

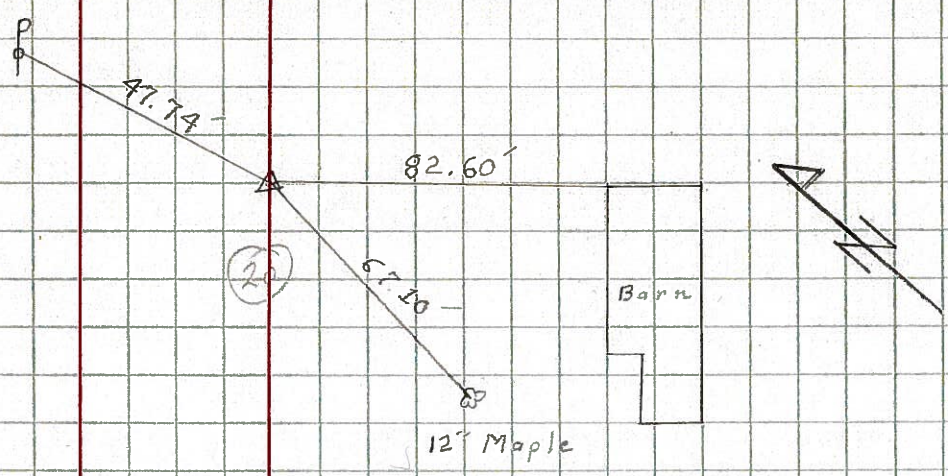
CENTER LINE

RIGHT

JOB NO. _____

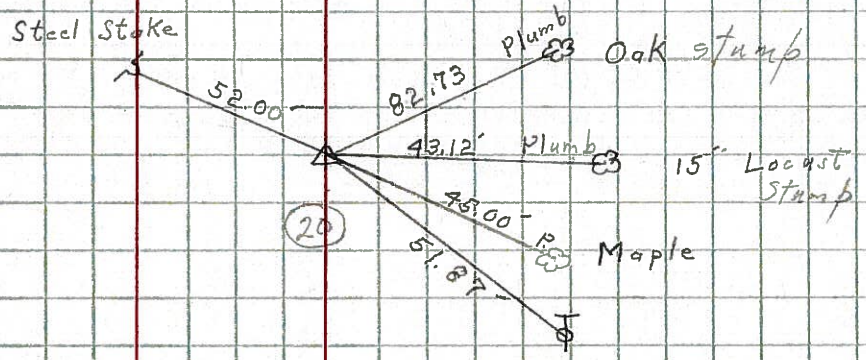
(42)

STA. 8+00
Iron Pin
391



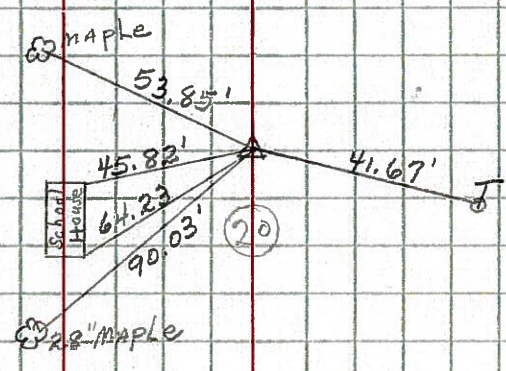
(43)

STA. 21+50
Iron Pin
392



(44)

STA. 29+00
Iron Pin
393



(45)

STA. 46+00
IRON PIN
394

