

O.D.O.T. DISTRICT 2 SURVEY OFFICE (USE ONLY)

PERSONNEL	REFERENCE NO. <u>44</u>	SHEET <u>22</u> OF <u>46</u>
NOTES <u>HOMAN</u>	DATE <u>7-21-09</u>	ROUTE <u>SR 101</u>
H.C. <u>HOMAN</u>	WEATHER <u>SUNNY</u>	COUNTY <u>SENECA</u>
R.C. <u>ROUSOS</u>	TEMP. <u>85°F</u>	TOWNSHIP <u>ADAMS</u>
		SECTION <u>20</u>
DWG BY <u>WHITAKER</u>	PID <u>101165</u>	T <u>3</u> N R <u>16</u> E

TYPE MONUMENT P.K./WASHER

ON SURFACE - ~~BELOW~~ ON

OFFSET ℄ PAVEMENT 3 1/2' LT : ~~RT~~

- TO - EDGE PAVEMENT

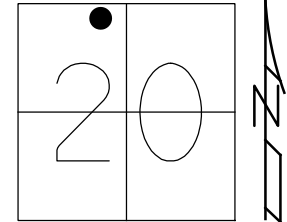
STATION: 538+80

HORIZ.DATUM: NAD83 (2011)

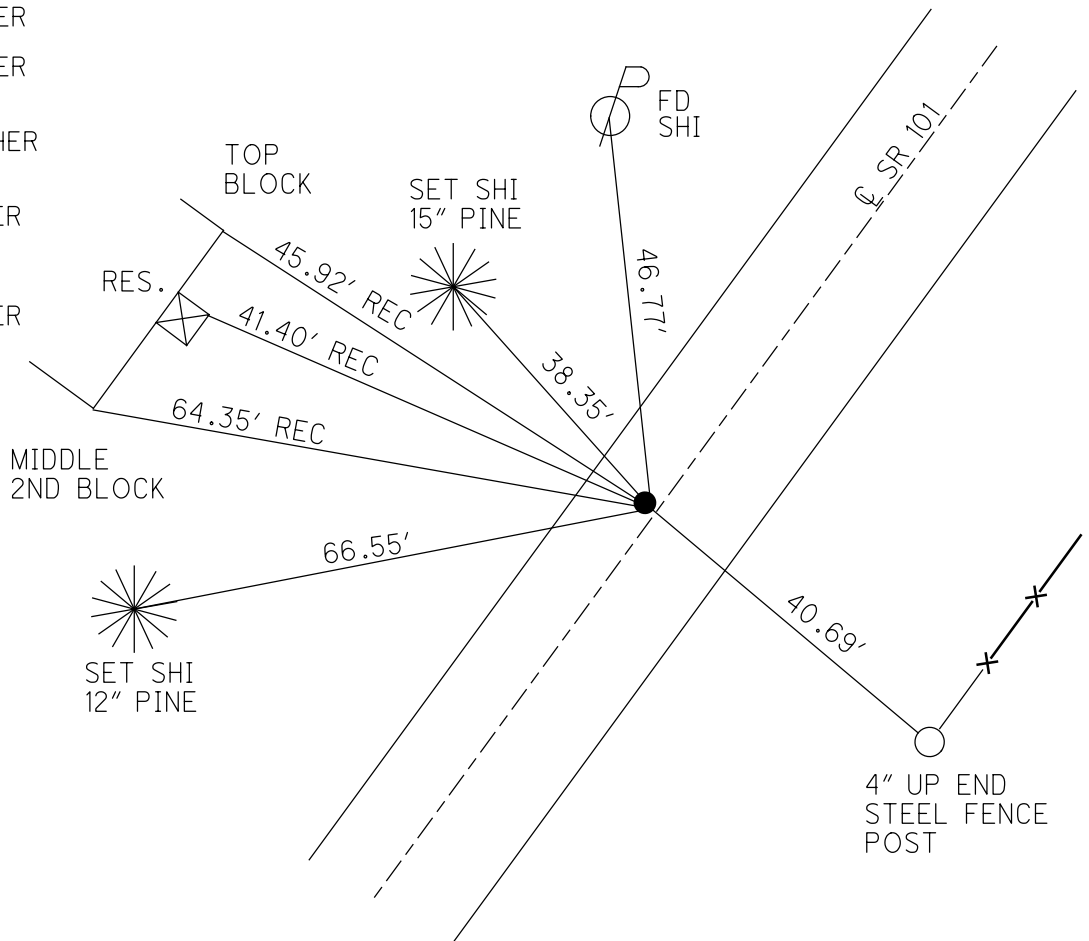
GEOID: NAVD88-2012A

GRID: NORTHING: 563802.121

EASTING: 1818022.071



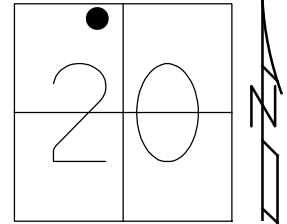
RECORD: P.I.  
 STA. 29+00  
 FD P.K./WASHER  
 ATOP R.R.SPIKE  
 SET P.K./WASHER  
 8/27/90  
 FD P.K./WASHER  
 2/7/05, SAH  
 FD P.K./WASHER  
 REF44  
 7/21/09, DCH  
 SET MAG/WASHER  
 NEWREF44  
 10/5/09, DCH  
 FD MAG/WASHER  
 REF44  
 6/14/16  
 9/18/17, JFO  
 FD MAG/WASHER  
 REF 44  
 9/25/19, JLL  
 8/02/21,  
 6/6/22, DSA



O.D.O.T. DISTRICT 2 SURVEY OFFICE (USE ONLY)

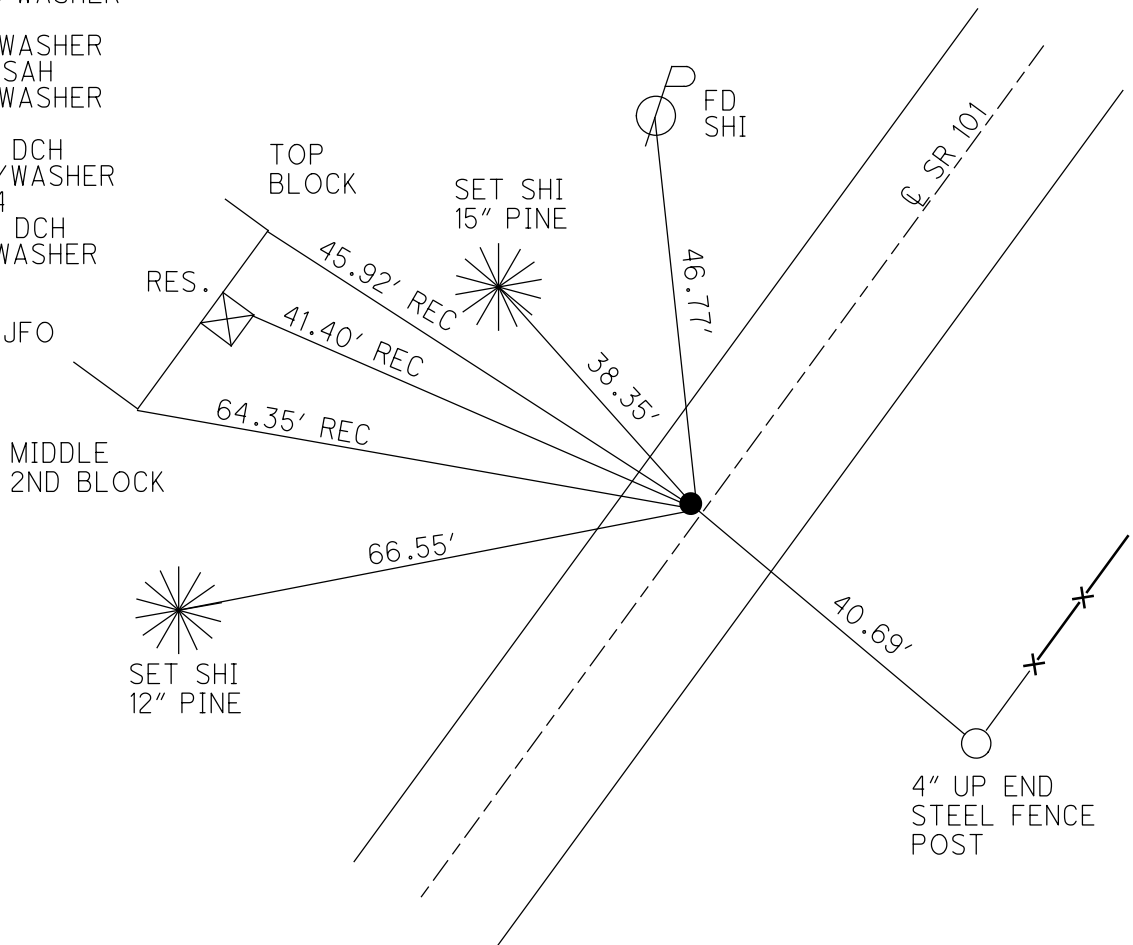
PERSONNEL \_\_\_\_\_ REFERENCE NO. 44 SHEET 22 OF 46  
 NOTES HOMAN DATE 7-21-09 ROUTE SR 101  
 H.C. HOMAN WEATHER SUNNY COUNTY SENECA  
 R.C. ROUSOS TEMP. 85°F TOWNSHIP ADAMS  
 DWG BY MAHLER PID 100787 SECTION 20  
 T 3 N R 16 E

TYPE MONUMENT P.K./WASHER  
 ON SURFACE - ~~BELOW~~ ON  
 OFFSET ☐ PAVEMENT 3 1/2' LT : ~~RT~~  
- TO - EDGE PAVEMENT  
 STATION: 538+80



HORZ.DATUM: NAD83 (2011) GEOID: NAVD88-2012A  
 GRID: NORTHING: 563802.131 EASTING: 1818022.068

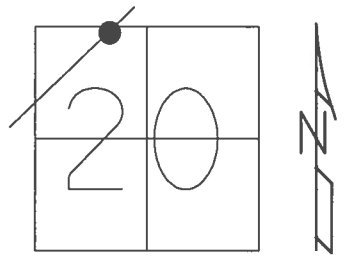
RECORD: P.I.  
 STA. 29+00  
 FD P.K./WASHER  
 ATOP R.R.SPIKE  
 SET P.K./WASHER  
 8/27/90  
 FD P.K./WASHER  
 2/7/05, SAH  
 FD P.K./WASHER  
 REF44  
 7/21/09, DCH  
 SET MAG/WASHER  
 NEWREF44  
 10/5/09, DCH  
 FD MAG/WASHER  
 REF44  
 6/14/16  
 9/18/17, JFO



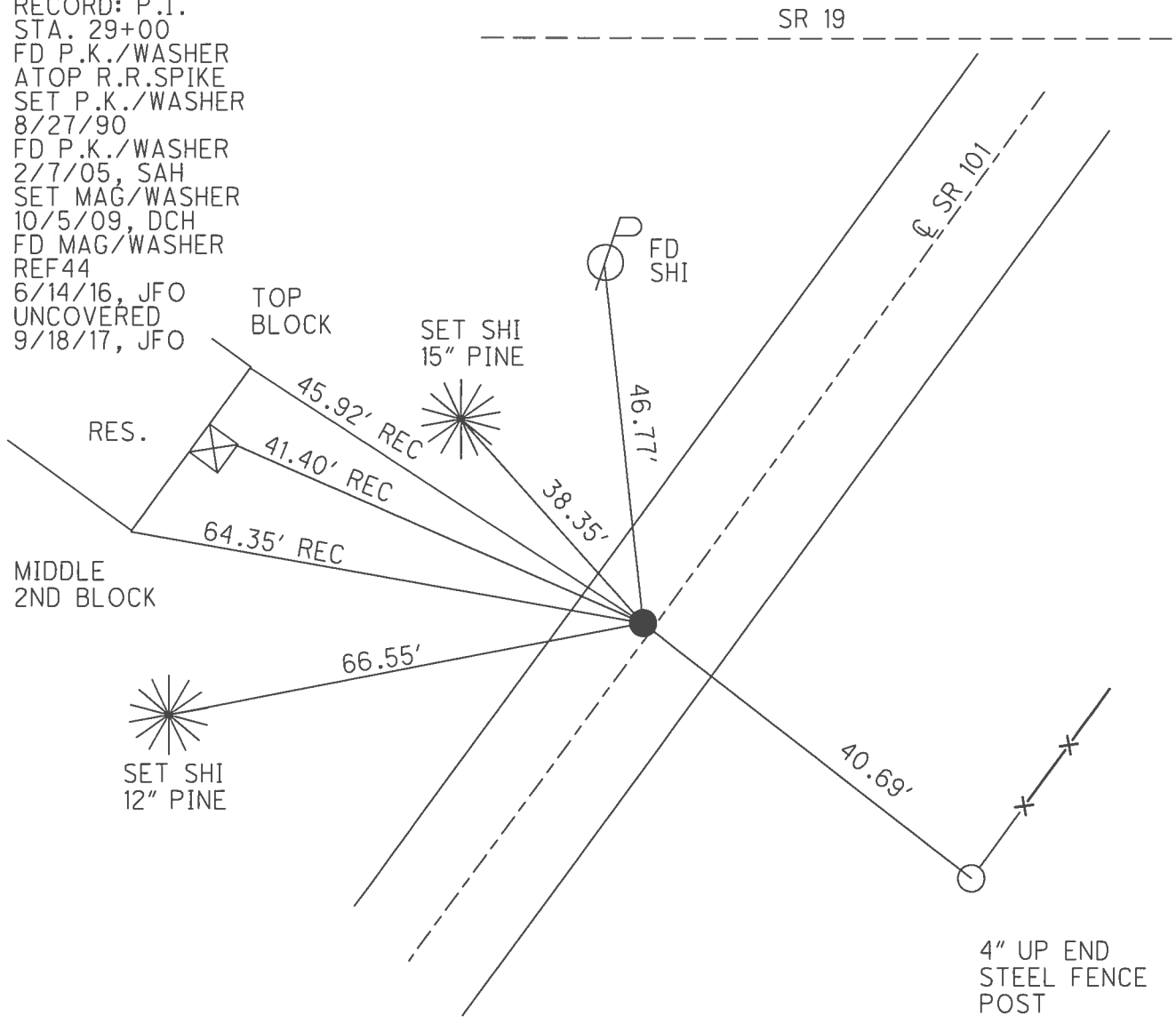
**O.D.O.T. DISTRICT 2 SURVEY OFFICE (USE ONLY)**

PERSONNEL	REFERENCE NO.	44	SHEET	22	OF	46
NOTES	HOMAN	DATE	7/21/09	ROUTE	SR 101	
H.C.	HOMAN	WEATHER	SUNNY	COUNTY	SENECA	
R.C.	ROUSOS	TEMP.	85°	TOWNSHIP	ADAMS	
				SECTION	20	
				T	3	N
				R	16	E

TYPE MONUMENT P.K./WASHER  
 ON SURFACE - ~~BELOW~~ ON  
 LEFT - Q PAV'T - ~~RIGHT~~ 3 1/2'  
- TO - EDGE PAVEMENT  
 S.L.M. 538+80  
 GRID: NORTHING: 563802.131 EASTING: 1818022.068



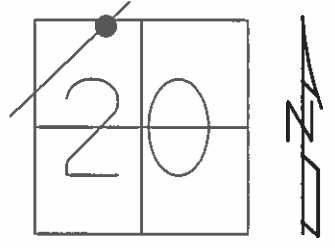
RECORD: P.I.  
 STA. 29+00  
 FD P.K./WASHER  
 ATOP R.R.SPIKE  
 SET P.K./WASHER  
 8/27/90  
 FD P.K./WASHER  
 2/7/05, SAH  
 SET MAG/WASHER  
 10/5/09, DCH  
 FD MAG/WASHER  
 REF44  
 6/14/16, JFO  
 UNCOVERED  
 9/18/17, JFO



O.D.O.T. DISTRICT 2 SURVEY OFFICE (USE ONLY)

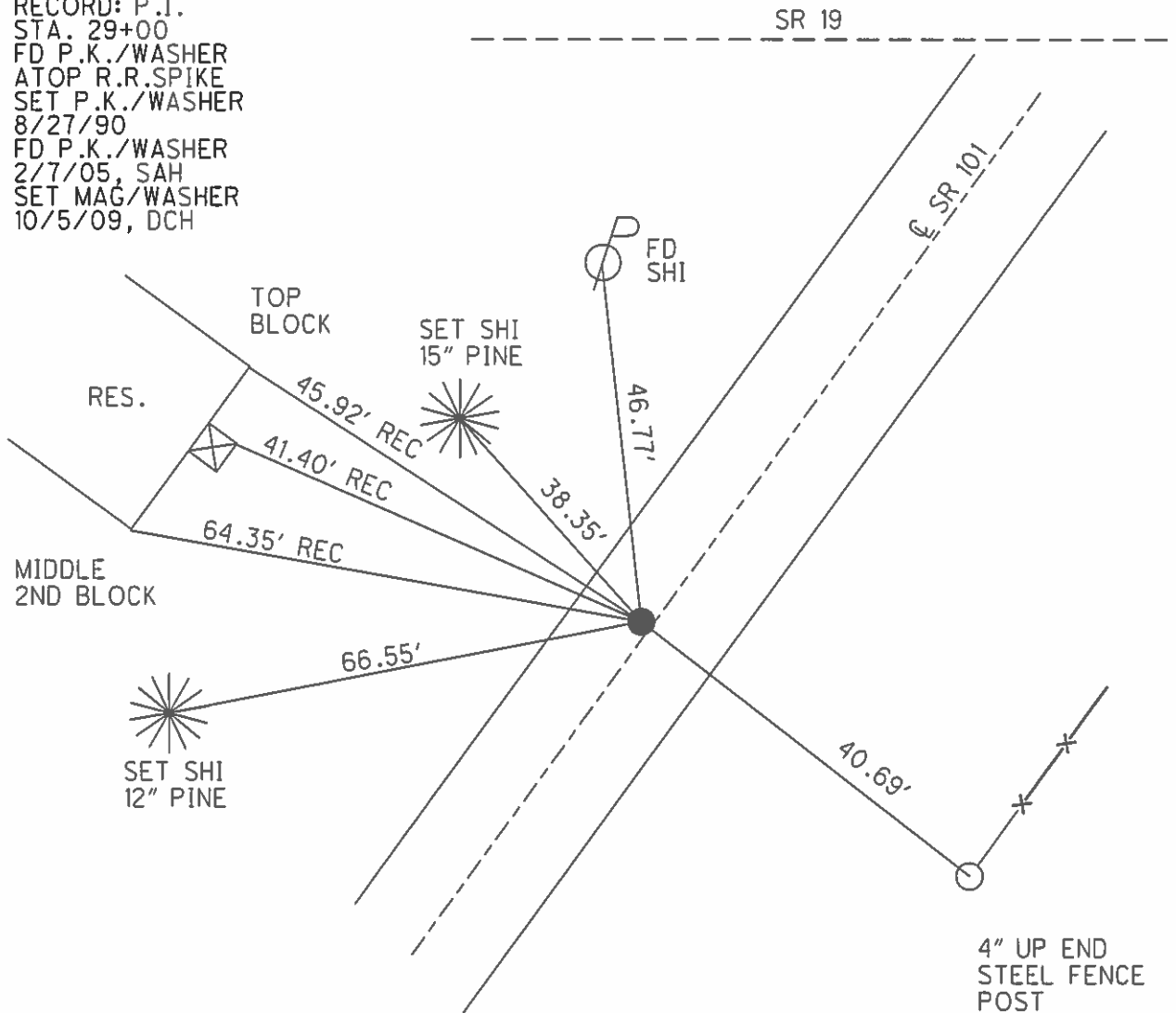
PERSONNEL \_\_\_\_\_ REFERENCE NO. 44 SHEET 22 OF 46  
 NOTES HOMAN DATE 7/21/09 ROUTE SR 101  
 H.C. HOMAN WEATHER SUNNY COUNTY SENECA  
 R.C. ROUSOS TEMP. 85° TOWNSHIP ADAMS  
 \_\_\_\_\_ SECTION 20  
 \_\_\_\_\_ T. 3 N R. 16 E

TYPE MONUMENT P.K./WASHER  
 ON SURFACE - ~~BELOW~~ ON  
 LEFT - ☉ PAV'T - ~~RIGHT~~ 3 1/2'  
 - TO - EDGE PAVEMENT  
 S.L.M. 538+80



GRID: NORTHING: 564794.494 EASTING: 1819399.969

RECORD: P.J.  
 STA. 29+00  
 FD P.K./WASHER  
 ATOP R.R.SPIKE  
 SET P.K./WASHER  
 8/27/90  
 FD P.K./WASHER  
 2/7/05, SAH  
 SET MAG/WASHER  
 10/5/09, DCH



# O.D.O.T. DISTRICT 2 SURVEY OFFICE

PERSONNEL

REFERENCE NO. 44

SHEET 18 OF 41

NOTES RIPPLE

H.C. BARBOUR

R.C. GEYMAN

DATE 8/27/90

WEATHER SUNNY

TEMP. 92°

ROUTE SR#101

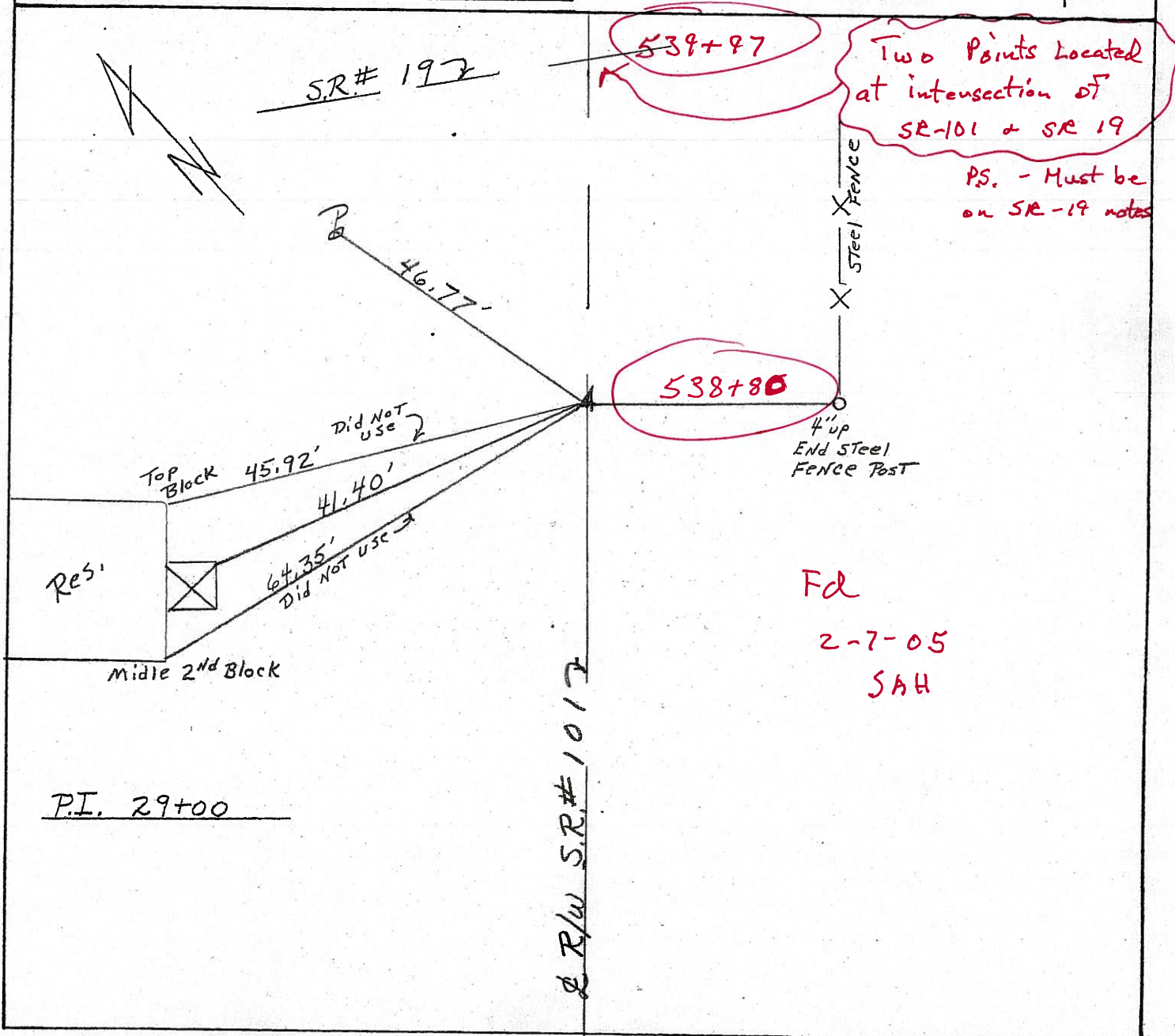
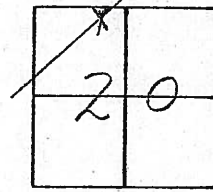
COUNTY SENECA

TOWNSHIP ADAMS

SECTION 20

T3 N R 16 E

TYPE MONUMENT Set P.K. & washer  
 ON SURFACE - BELOW P.K. & washer AT TOP RR. SPIKE  
 LEFT - ¢ PAV'T. - RIGHT 3 1/2' LT. of ¢ PAV'T.  
TO EDGE PAVEMENT  
 S.L.M. \_\_\_\_\_



# O.D.O.T. DISTRICT 2 SURVEY OFFICE

PERSONNEL

REFERENCE NO. 442

SHEET 18 OF 41

NOTES RIPPLE

H.C. BARBOUR

R.C. GEYMAN

DATE 8/27/90

WEATHER SUNNY

TEMP. 92°

ROUTE SR#101

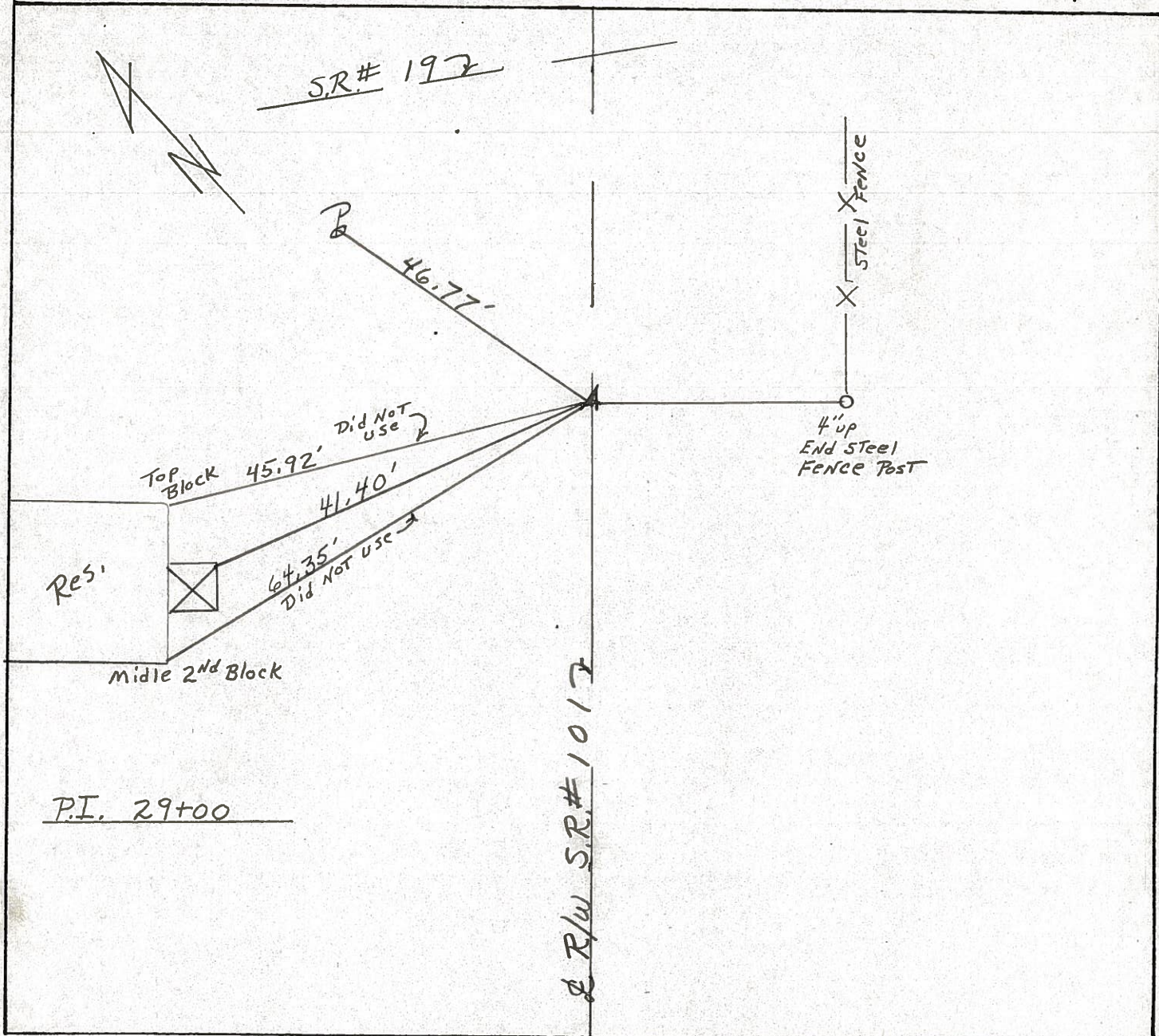
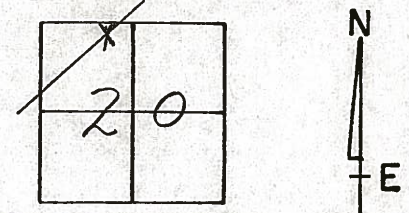
COUNTY SENECA

TOWNSHIP ADAMS

SECTION 20

T3 N R 16 E

TYPE MONUMENT Set P.K. & washer  
 ON SURFACE - BELOW P.K. & washer at top RR. spike  
 LEFT - ¢ PAV'T. - RIGHT 3 1/2' LT. of ¢ PAV'T.  
 TO EDGE PAVEMENT  
 S.L.M. \_\_\_\_\_



County Seneca S.R. # 101

Date 6-26-79

Township Adams

Weather Fair

Section 20

Temp. 70°

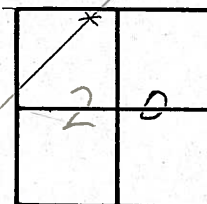
T 3 N, R 16 E

Personnel Schneider

Mosser

Barbour

(44)



~~#430~~

P.I.

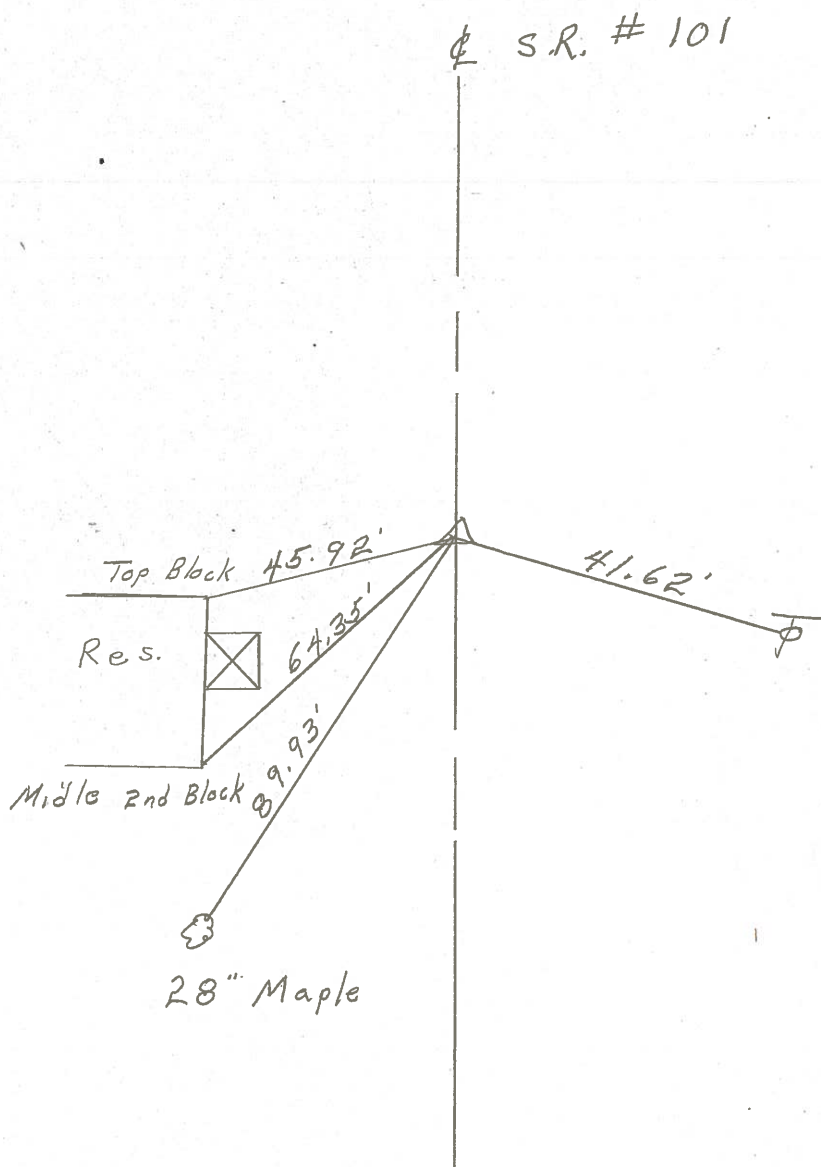
29+00

R.R. Spk. on  $\perp$  R/W

1 1/2" down

Reset P.K. Nail

3' Lt. of  $\perp$



PERSONNEL TITLE PERSONNEL TITLE

COUNTY Seneca DATE 2-10-64

Krabill  
Kowaleski  
Geyma  
Bruggeman

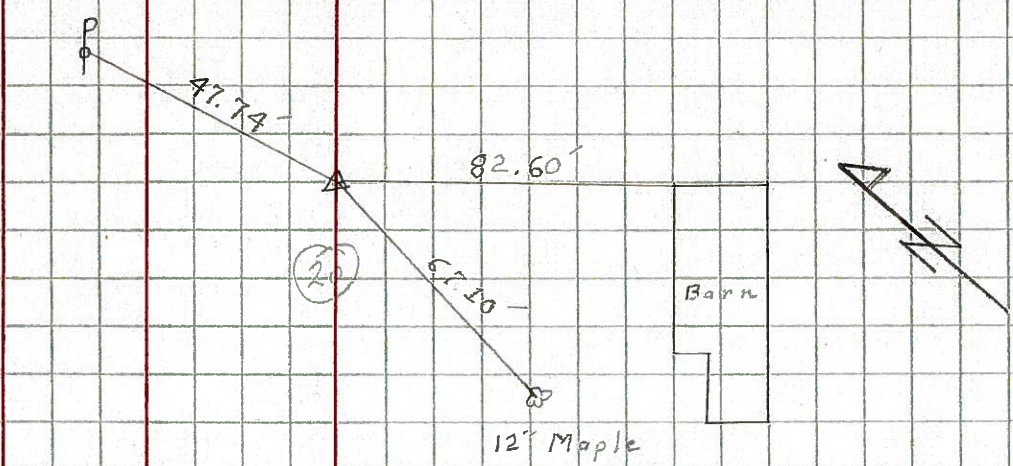
S. R. 101 WEATHER

SEC. TEMP.

DESCRIPTION LEFT CENTER LINE RIGHT JOB NO.

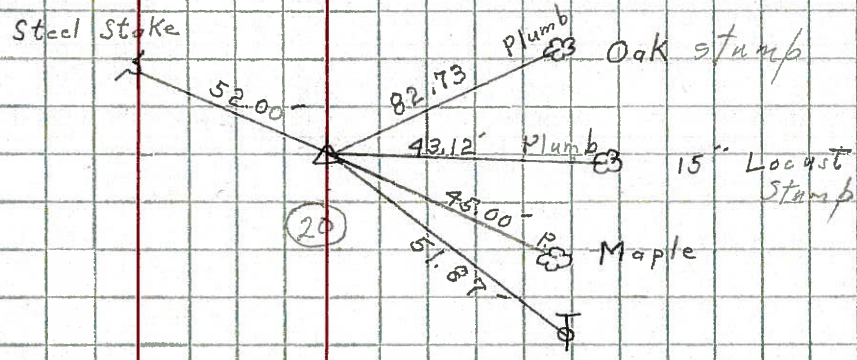
42

STA. 8+00  
Iron Pin  
# 391



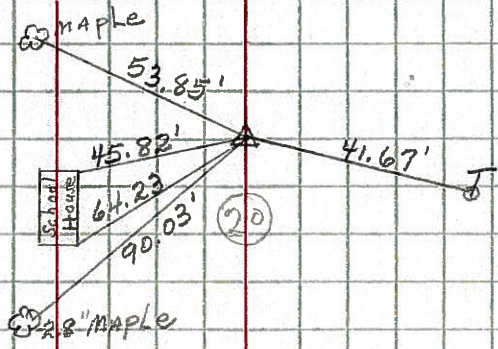
43

STA. 21+50  
Iron Pin  
# 392



44

STA. 29+00  
Iron Pin  
# 393



45

STA. 46+00  
IRON PIN  
# 394

