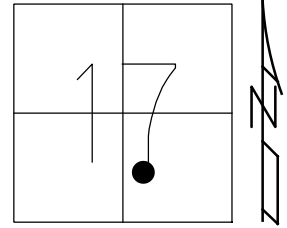


O.D.O.T. DISTRICT 2 SURVEY OFFICE (USE ONLY)

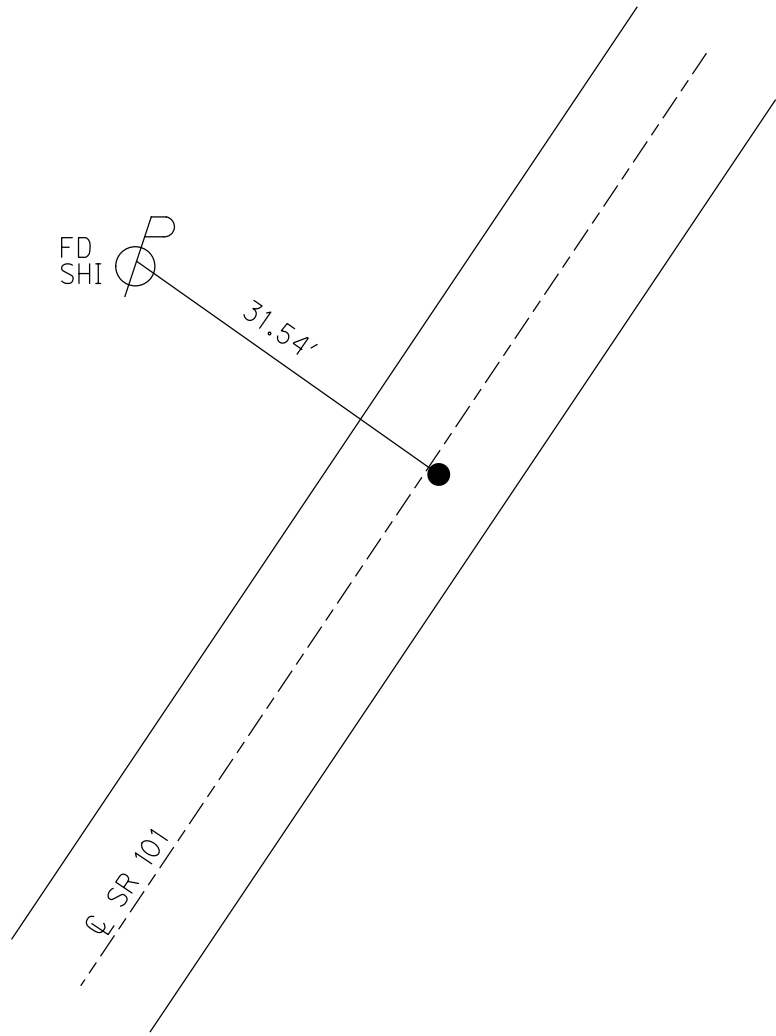
PERSONNEL _____ REFERENCE NO. 45 SHEET 23 OF 46
 NOTES HOMAN DATE 7-21-09 ROUTE SR 101
 H.C. HOMAN WEATHER SUNNY COUNTY SENECA
 R.C. ROUSOS TEMP. 85°F TOWNSHIP ADAMS
 DWG BY WHITAKER PID 101165 SECTION 17
 T 3 N R 16 E

TYPE MONUMENT P.K./WASHER
 ON SURFACE - ~~BELOW~~ ON
 OFFSET 0 PAVEMENT 1' ~~ET~~ : RT
- TO - EDGE PAVEMENT
 STATION: 555+77



HORIZ.DATUM: NAD83 (2011) GEOID: NAVD88-2012A
 GRID: NORTHING: 564794.453 EASTING: 1819400.025

RECORD:
 STA. 46+00
 FD P.K.NAIL
 ATOP R.R.SPIKE
 SET P.K./WASHER
 8/27/90, BARBOUR
 FD P.K./WASHER
 2/7/05, SAH
 FD P.K./WASHER
 REF45
 7/21/09, DCH
 SET MAG/WASHER
 NEWREF45
 10/5/09, DCH
 FD MAG/WASHER
 REF45
 6/14/16
 9/18/17, JFO
 FD MAG/WASHER
 REF 45
 9/25/19, JLL
 6/6/22, DSA



O.D.O.T. DISTRICT 2 SURVEY OFFICE (USE ONLY)

PERSONNEL

REFERENCE NO. 45

SHEET 23 OF 46

NOTES HOMAN DATE 7-21-09
 H.C. HOMAN WEATHER SUNNY
 R.C. ROUSOS TEMP. 85°F

ROUTE SR 101
 COUNTY SENECA
 TOWNSHIP ADAMS
 SECTION 17
 T 3 N R 16 E

DWG BY MAHLER PID 100787

TYPE MONUMENT P.K./WASHER

ON SURFACE - ~~BELOW~~ ON

OFFSET CL PAVEMENT 1' ET : RT

- TO - EDGE PAVEMENT

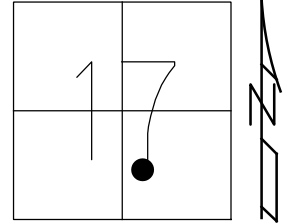
STATION: 555+77

HORZ.DATUM: NAD83 (2011)

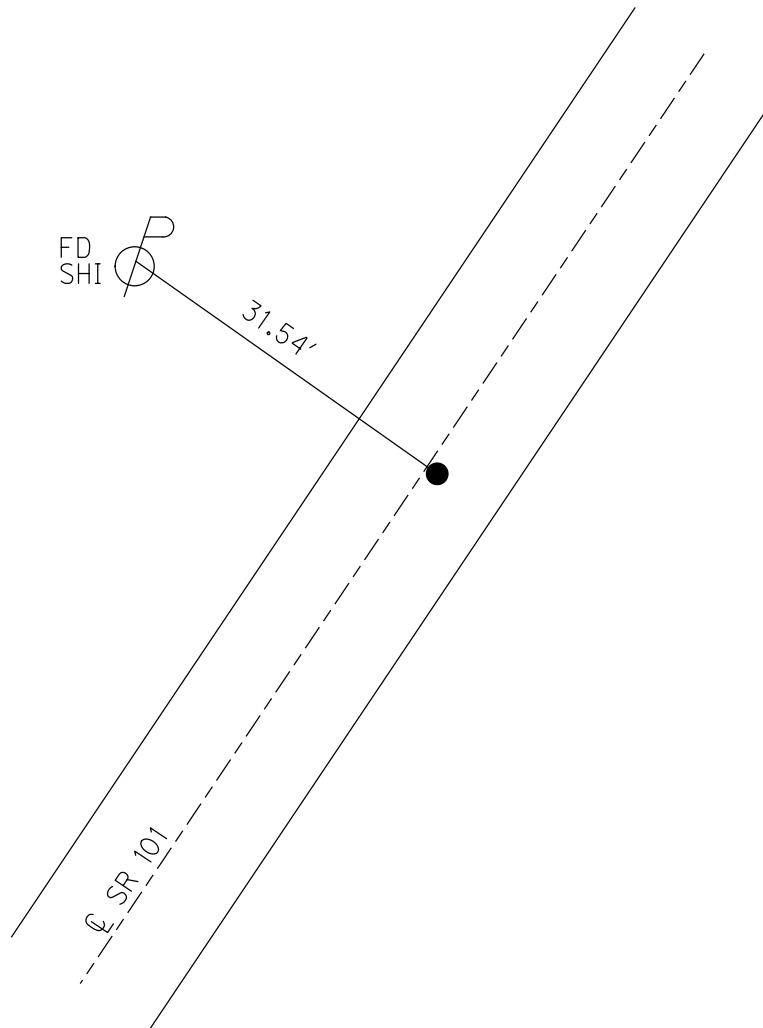
GEOID: NAVD88-2012A

GRID: NORTHING: 564794.453

EASTING: 1819400.009



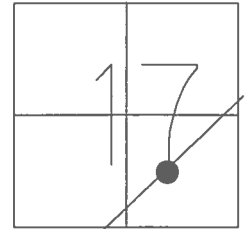
RECORD:
 STA. 46+00
 FD P.K.NAIL
 ATOP R.R.SPIKE
 SET P.K./WASHER
 8/27/90, BARBOUR
 FD P.K./WASHER
 2/7/05, SAH
 FD P.K./WASHER
 REF45
 7/21/09, DCH
 SET MAG/WASHER
 NEWREF45
 10/5/09, DCH
 FD MAG/WASHER
 REF45
 6/14/16
 9/18/17, JFO



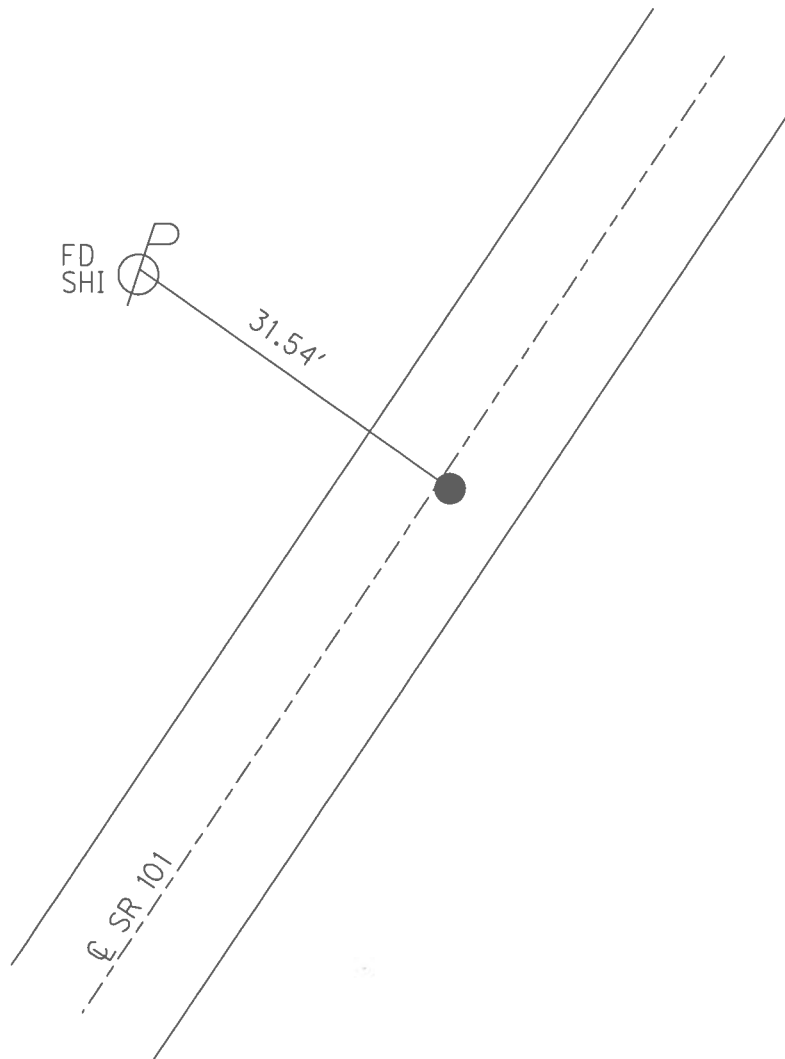
O.D.O.T. DISTRICT 2 SURVEY OFFICE (USE ONLY)

PERSONNEL _____ REFERENCE NO. 45 SHEET 23 OF 46
 NOTES HOMAN DATE 7/21/09 ROUTE SR 101
 H.C. HOMAN WEATHER SUNNY COUNTY SENECA
 R.C. ROUSOS TEMP. 85° TOWNSHIP ADAMS
 _____ SECTION 17
 _____ T 3 N R 16 E

TYPE MONUMENT P.K./WASHER
 ON SURFACE - ~~BELOW~~ ON
~~LEFT~~ - Q PAV'T - RIGHT 2'
- TO - EDGE PAVEMENT
 S.L.M. 555+77
 GRID: NORTHING: 564794.453 EASTING: 1819400.009



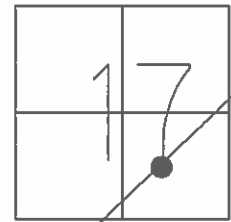
RECORD:
 STA. 46+00
 FD P.K.NAIL ATOP
 R.R.SPIKE
 SET P.K./WASHER
 8/27/90
 FD P.K./WASHER
 2/7/05, SAH
 SET MAG/WASHER
 10/5/09, DCH
 FD MAG/WASHER
 REF 45
 6/14/16, JFO
 UNCOVERED
 9/18/17, JFO



O.D.O.T. DISTRICT 2 SURVEY OFFICE (USE ONLY)

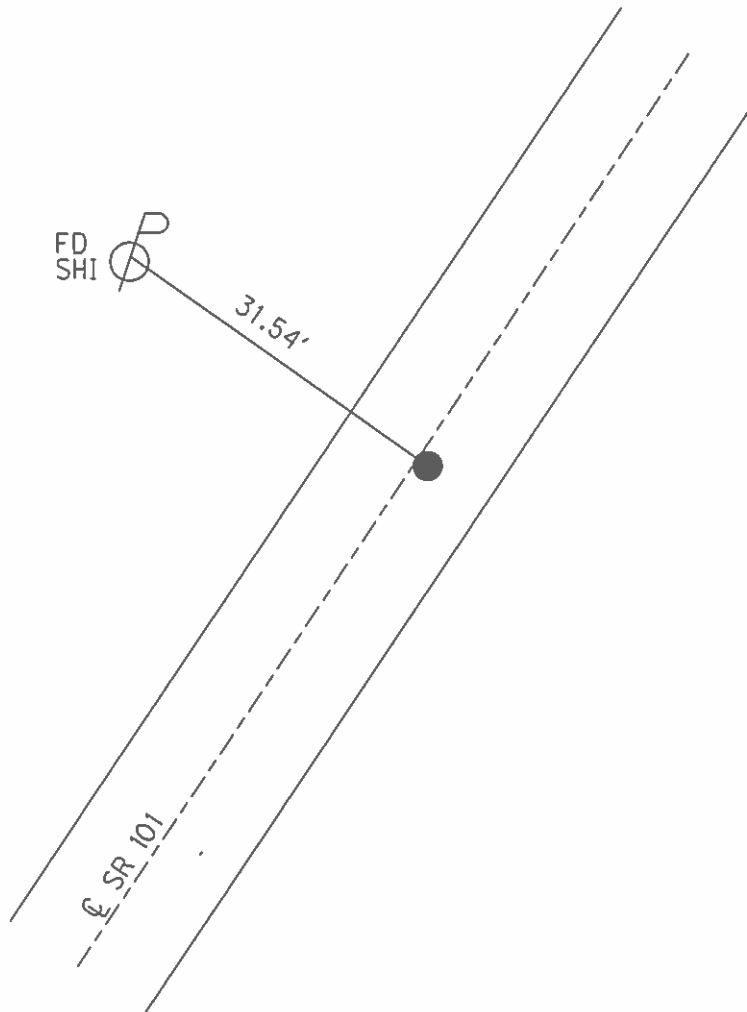
PERSONNEL	REFERENCE NO.	<u>45</u>	SHEET	<u>23</u>	OF	<u>46</u>
NOTES	HOMAN	DATE	<u>7/21/09</u>	ROUTE	<u>SR 101</u>	
H.C.	HOMAN	WEATHER	<u>SUNNY</u>	COUNTY	<u>SENECA</u>	
R.C.	ROUSOS	TEMP.	<u>85°</u>	TOWNSHIP	<u>ADAMS</u>	
				SECTION	<u>17</u>	
				T	<u>3</u>	N
				R	<u>16</u>	E

TYPE MONUMENT P.K./WASHER
 ON SURFACE - ~~BELOW~~ ON
~~LEFT~~ - Q PAV'T - RIGHT 1'
TO EDGE PAVEMENT
 S.L.M. 555+77



GRID: NORTHING: 565434.376 EASTING: 1820169.692

RECORD:
 STA. 46+00
 FD P.K.NAIL ATOP
 R.R.SPIKE
 SET P.K./WASHER
 8/27/90
 FD P.K./WASHER
 2/7/05, SAH
 SET MAG/WASHER
 10/5/09, DCH



O.D.O.T. DISTRICT 2 SURVEY OFFICE

PERSONNEL

REFERENCE NO. 45

SHEET 19 OF 41

NOTES RIPPLE

H.C. BARBOUR

R.C. GEYMAN

DATE 8/27/90

WEATHER SUNNY

TEMP. 92°

ROUTE SR. #101

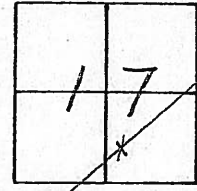
COUNTY SENECA

TOWNSHIP ADAMS

SECTION 17

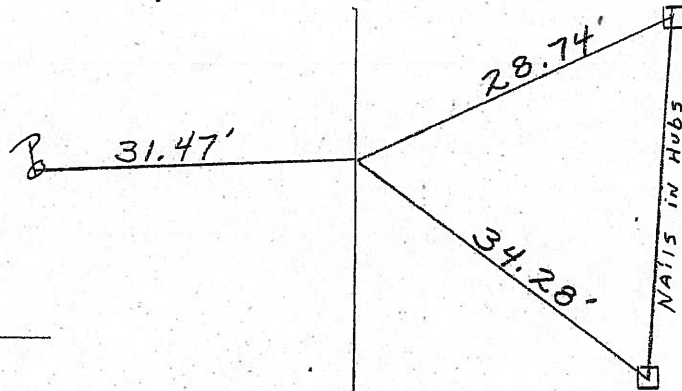
T 3 N R 16 E

TYPE MONUMENT SET P.K. & WASHER
 ON SURFACE - BELOW P.K. NAIL AT TOP RR SPIKE
 LEFT - 1' PAV'T. - RIGHT 1' RT. & PAV'T.
TO EDGE PAVEMENT
 S.L.M. _____



555 + 77

46 + 00



FL
2-2-05
SAH

& R/W SR # 101

O.D.O.T. DISTRICT 2 SURVEY OFFICE

PERSONNEL

REFERENCE NO. 45

SHEET 19 OF 44

NOTES Ripple

H.C. BARBOUR

R.C. GeyMAN

DATE 8/27/90

WEATHER SUNNY

TEMP. 92°

ROUTE S.R. #101

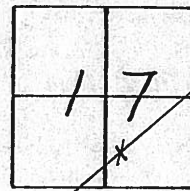
COUNTY Seneca

TOWNSHIP Adams

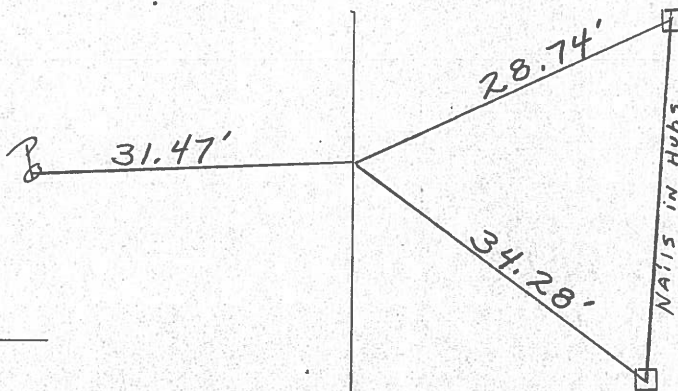
SECTION 17

T 3 N R 16 E

TYPE MONUMENT Set P.K. & washer
ON SURFACE - BELOW P.K. Nail at Top RR spike
LEFT - ¢ PAV'T. - RIGHT 1' RT. & PAV'T.
____ TO ____ EDGE PAVEMENT
S.L.M. _____



46+00



& R/W SR # 1017

County Seneca S.R. # 101

Date 6-26-79

Township Adams

Weather Fair

Section 17

Temp. 70°

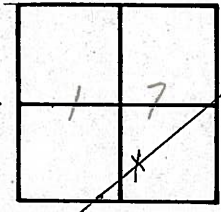
T 3 N, R 16 E

Personnel Schneider

Mosser

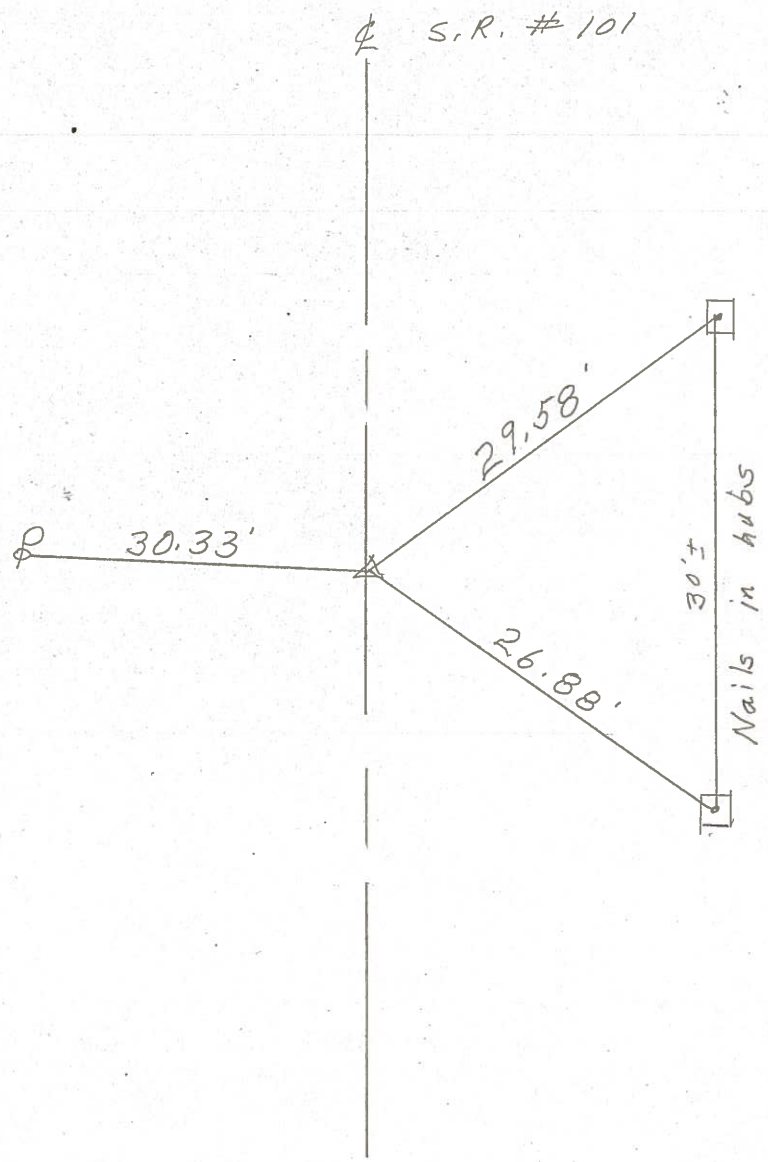
Barbour

(45)



~~#46~~

46+00
R.R. spk. on ϕ R/w
Reset P.K. Nail

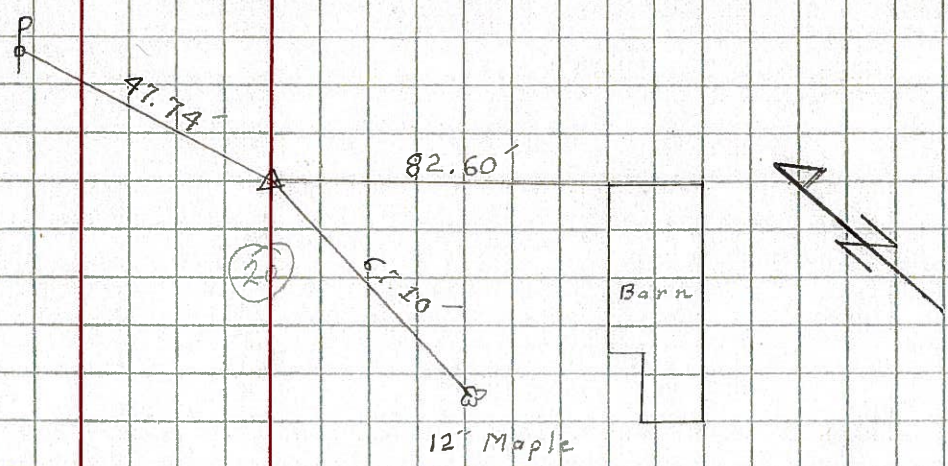


PERSONNEL	TITLE	PERSONNEL	TITLE	COUNTY	DATE
Krabill				Seneca	2-10-69
Kowaleski				S. R. 101	WEATHER
Geyman				SEC.	TEMP.
Bruggeman					

DESCRIPTION	LEFT	CENTER LINE	RIGHT	JOB NO.
-------------	------	-------------	-------	---------

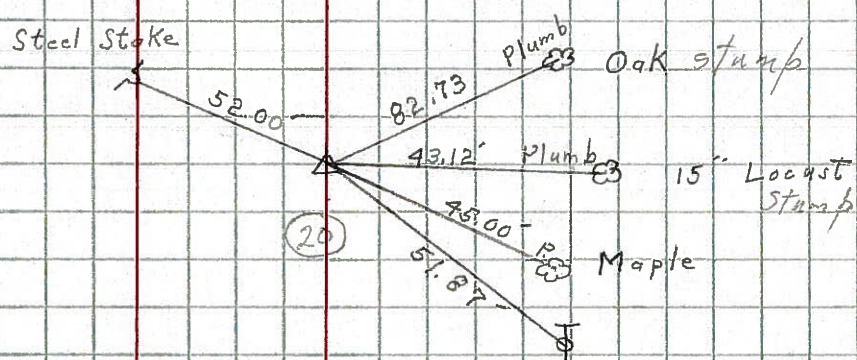
42

STA. 8+00
 Iron Pin
 # 391



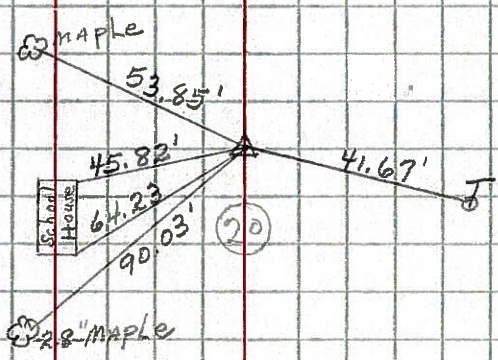
43

STA. 21+50
 Iron Pin
 # 392



44

STA. 29+00
 Iron Pin
 # 393



45

STA. 46+00
 IRON PIN
 # 394

