

O.D.O.T. DISTRICT 2 SURVEY OFFICE (USE ONLY)

PERSONNEL

REFERENCE NO. 46

SHEET 24 OF 46

NOTES HOMAN DATE 7-21-09
 H.C. HOMAN WEATHER SUNNY
 R.C. ROUSOS TEMP. 85°F

ROUTE SR 101
 COUNTY SENECA
 TOWNSHIP ADAMS
 SECTION 17
 T 3 N R 16 E

DWG BY MAHLER PID 100787

TYPE MONUMENT P.K./WASHER

ON SURFACE - ~~BELOW~~ ON

OFFSET 1.5' LT : RT

- TO - EDGE PAVEMENT

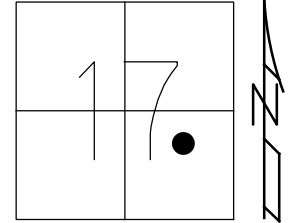
STATION: 565+79

HORIZ.DATUM: NAD83 (2011)

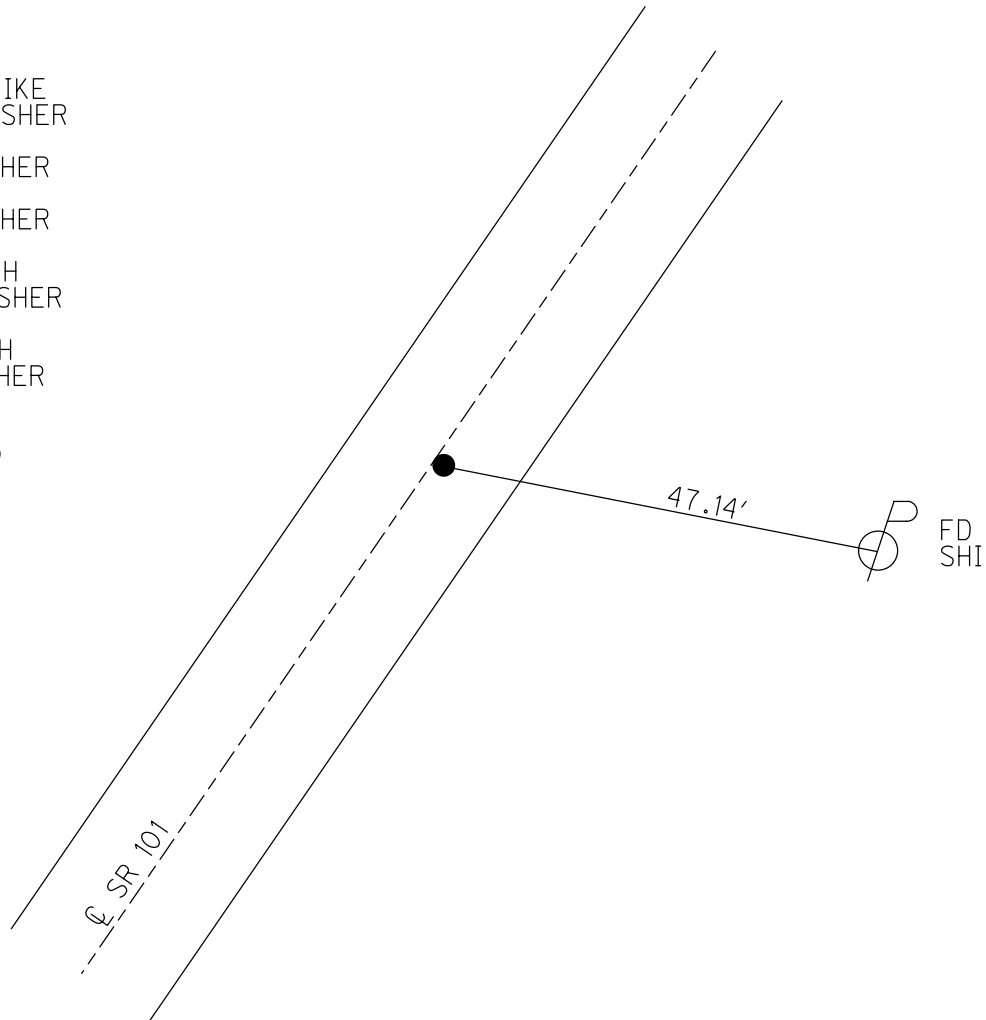
GEOID: NAVD88-2012A

GRID: NORTHING: 565434.287

EASTING: 1820169.785



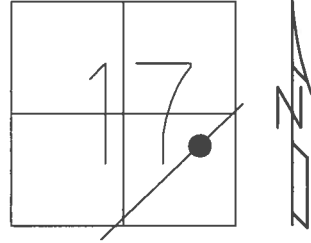
RECORD:
 STA. 56+00
 FD P.K.NAIL
 ATOP R.R.SPIKE
 SET P.K./WASHER
 8/28/90
 FD P.K./WASHER
 2/7/05, SAH
 FD P.K./WASHER
 REF46
 7/28/09, DCH
 SET MAG/WASHER
 NEWREF46
 10/5/09, DCH
 FD MAG/WASHER
 REF46
 6/14/16
 9/18/17, JFO



O.D.O.T. DISTRICT 2 SURVEY OFFICE (USE ONLY)

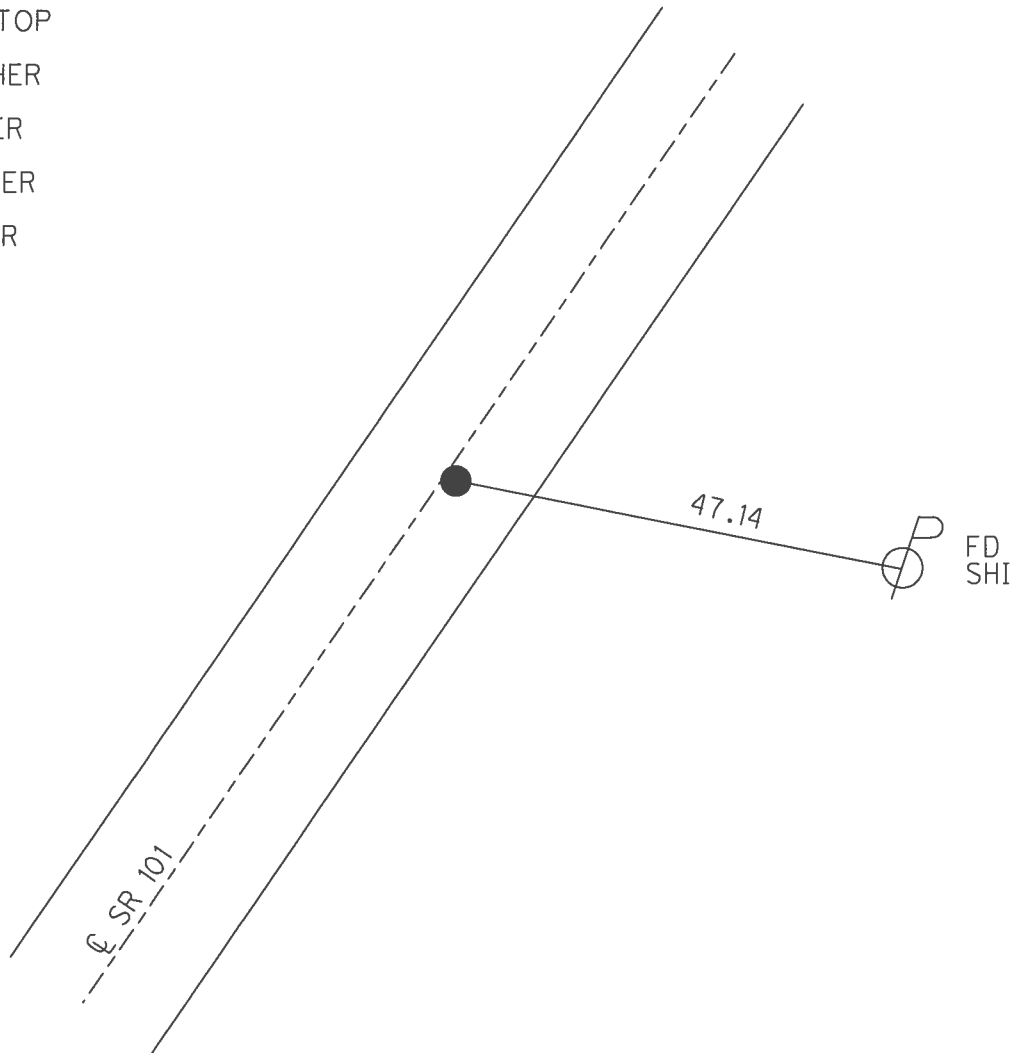
PERSONNEL _____ REFERENCE NO. 46 SHEET 24 OF 46
 NOTES HOMAN DATE 7/21/09 ROUTE SR 101
 H.C. HOMAN WEATHER SUNNY COUNTY SENECA
 R.C. ROUSOS TEMP. 85° TOWNSHIP ADAMS
 _____ SECTION 17
 _____ T 3 N R 16 E

TYPE MONUMENT P.K./WASHER
 ON SURFACE - ~~BELOW~~ ON
~~LEFT~~ - ℄ PAV'T - RIGHT 1.5'
- TO - EDGE PAVEMENT
 S.L.M. 565+79



GRID: NORTHING: 565434.287 EASTING: 1820169.785

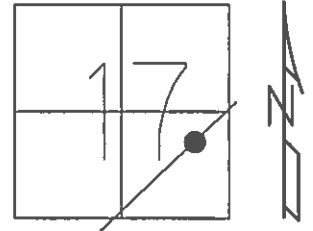
RECORD:
 STA. 56+00
 FD P.K.NAIL ATOP
 R.R.SPIKE
 SET P.K./WASHER
 8/28/90
 FD P.K./WASHER
 2/7/05, SAH
 SET MAG/WASHER
 10/5/09, DCH
 FD MAG/WASHER
 REF46
 6/14/16, JFO
 UNCOVERED
 9/18/17, JFO



O.D.O.T. DISTRICT 2 SURVEY OFFICE (USE ONLY)

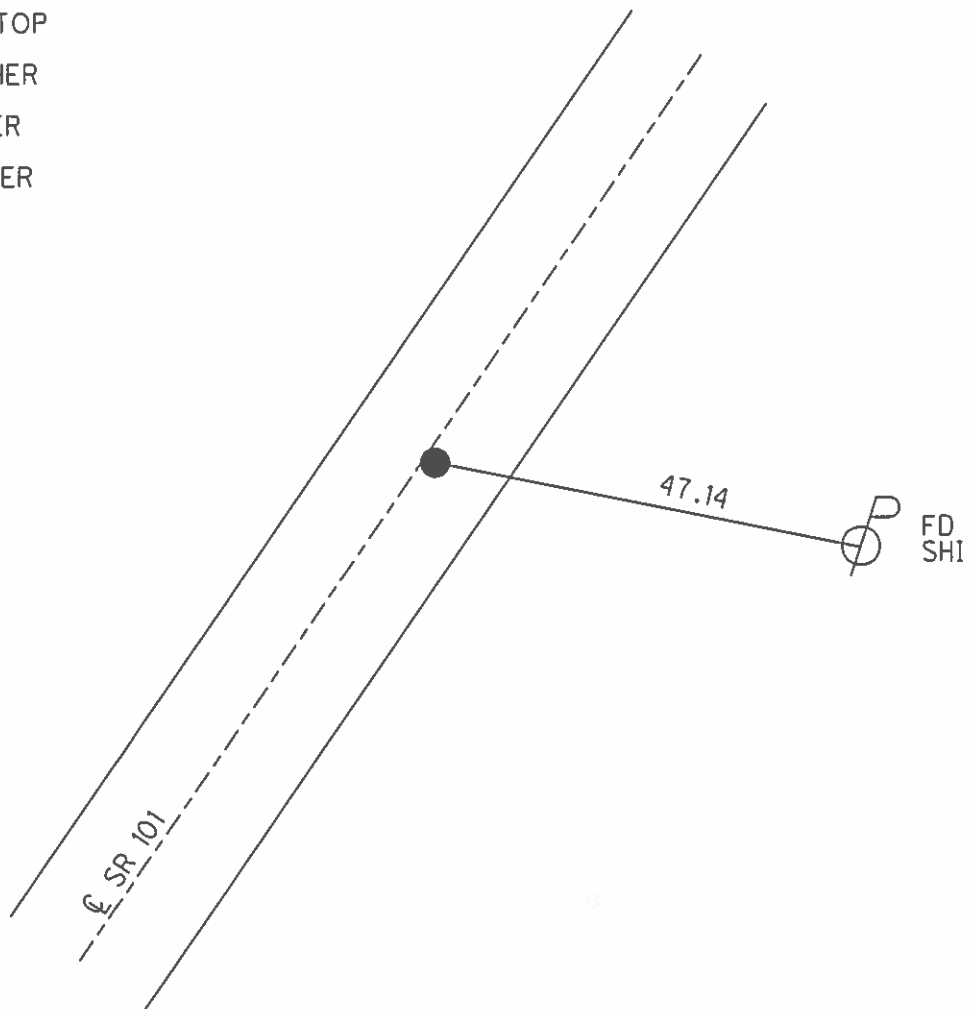
PERSONNEL _____ REFERENCE NO. 46 SHEET 24 OF 46
NOTES HOMAN DATE 7/21/09 ROUTE SR 101
H.C. HOMAN WEATHER SUNNY COUNTY SENECA
R.C. ROUSOS TEMP. 85° TOWNSHIP ADAMS
SECTION 17
T 3 N R 16 E

TYPE MONUMENT P.K./WASHER
ON SURFACE - ~~BELOW~~ ON
~~LEFT~~ - ☉ PAV'T - RIGHT 1.5'
- TO - EDGE PAVEMENT
S.L.M. 565+79



GRID: NORTHING: 565434.324 EASTING: 1820169.778

RECORD:
STA. 56+00
FD P.K. NAIL ATOP
R.R. SPIKE
SET P.K./WASHER
8/28/90
FD P.K./WASHER
2/7/05, SAH
SET MAG/WASHER
10/5/09, DCH



O.D.O.T. DISTRICT 2 SURVEY OFFICE

PERSONNEL

REFERENCE NO. 46

SHEET 20 OF 41

NOTES RIPPLE

H.C. BARBOUR

DATE 8/28/90

ROUTE SR # 101

R.C. GEYMAN

WEATHER SUNNY

COUNTY SENECA

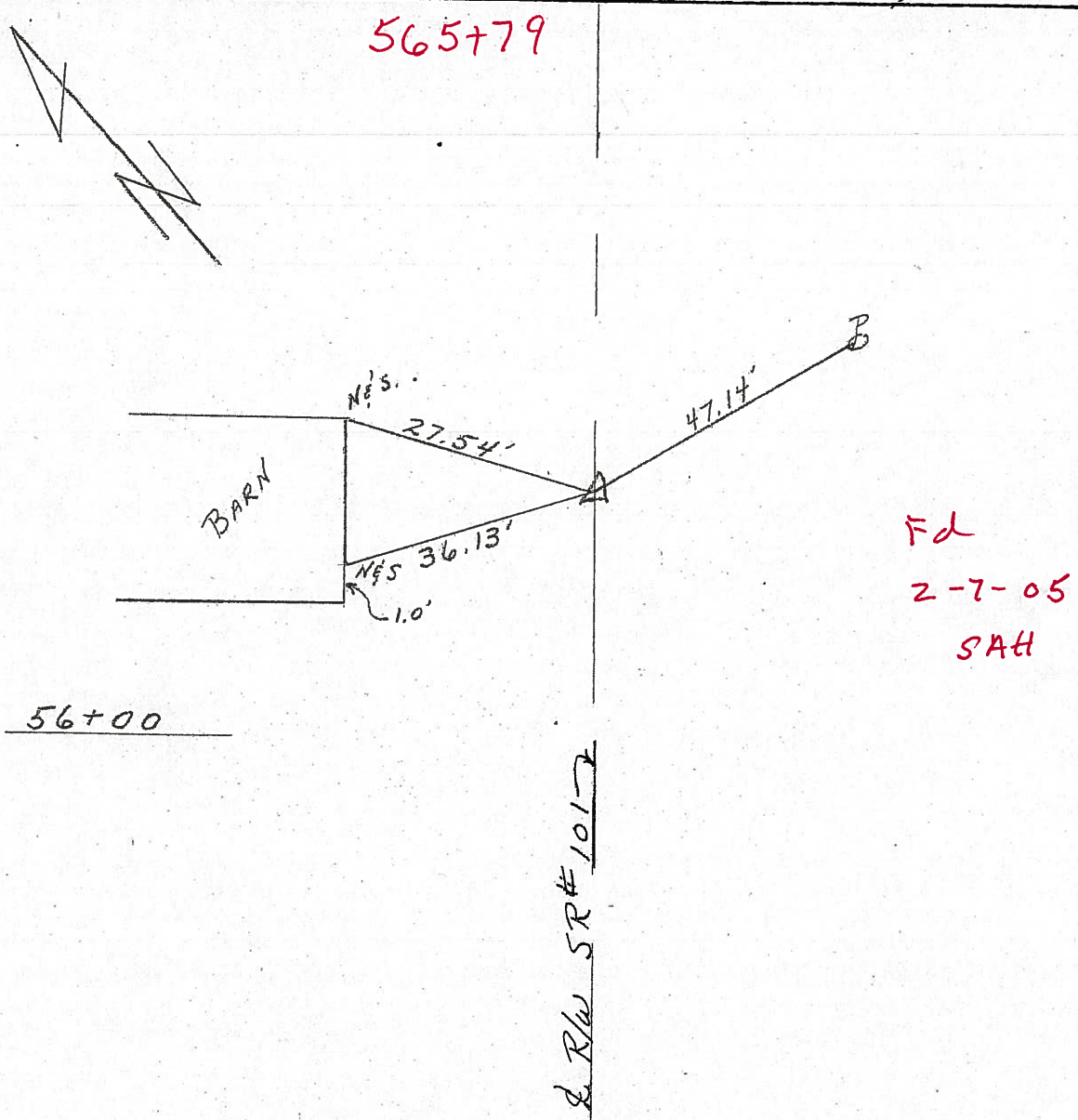
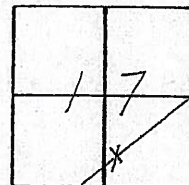
TEMP. 86°

TOWNSHIP ADAMS

SECTION 17

T 3 N R 16 E

TYPE MONUMENT SET PK. Nail & shiner
 ON SURFACE - BELOW PK. Nail A Top RR spike
 LEFT - CL PAV'T. - RIGHT 1.5' RT. CL PAV'T
TO EDGE PAVEMENT
 S.L.M. _____



O.D.O.T. DISTRICT 2 SURVEY OFFICE

PERSONNEL

REFERENCE NO. 46

SHEET 20 OF 41

NOTES RIPPLE

H.C. BARBOUR

DATE 8/28/90

ROUTE SR.# 101

R.C. GEYMAN

WEATHER SUNNY

COUNTY Seneca

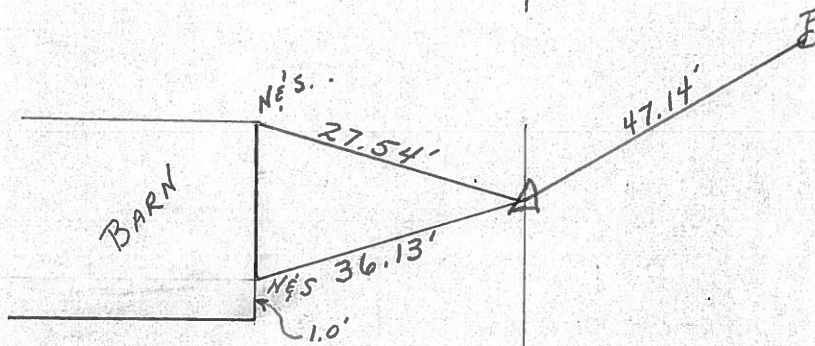
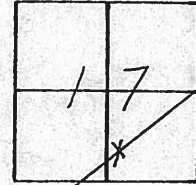
TEMP. 86°

TOWNSHIP Adams

SECTION 17

T.3 N R.16 E

TYPE MONUMENT Set P.K. Nail & shiner
ON SURFACE - BELOW PK. Nail A Top RR spike
LEFT - ¢ Pav't. - RIGHT 1.5' RT. & Pav't
____ TO ____ EDGE PAVEMENT
S.L.M. _____



56+00

¢ R/W SR # 101

County Seneca S.R. # 101

Date 6-27-79

Township Adams

Weather Fair

Section 17

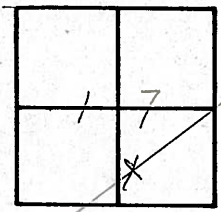
Temp. 70°

T₃N, R₁₆E

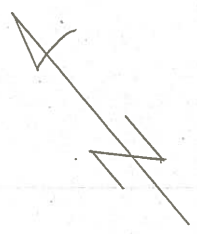
Personnel schneider

Mosser

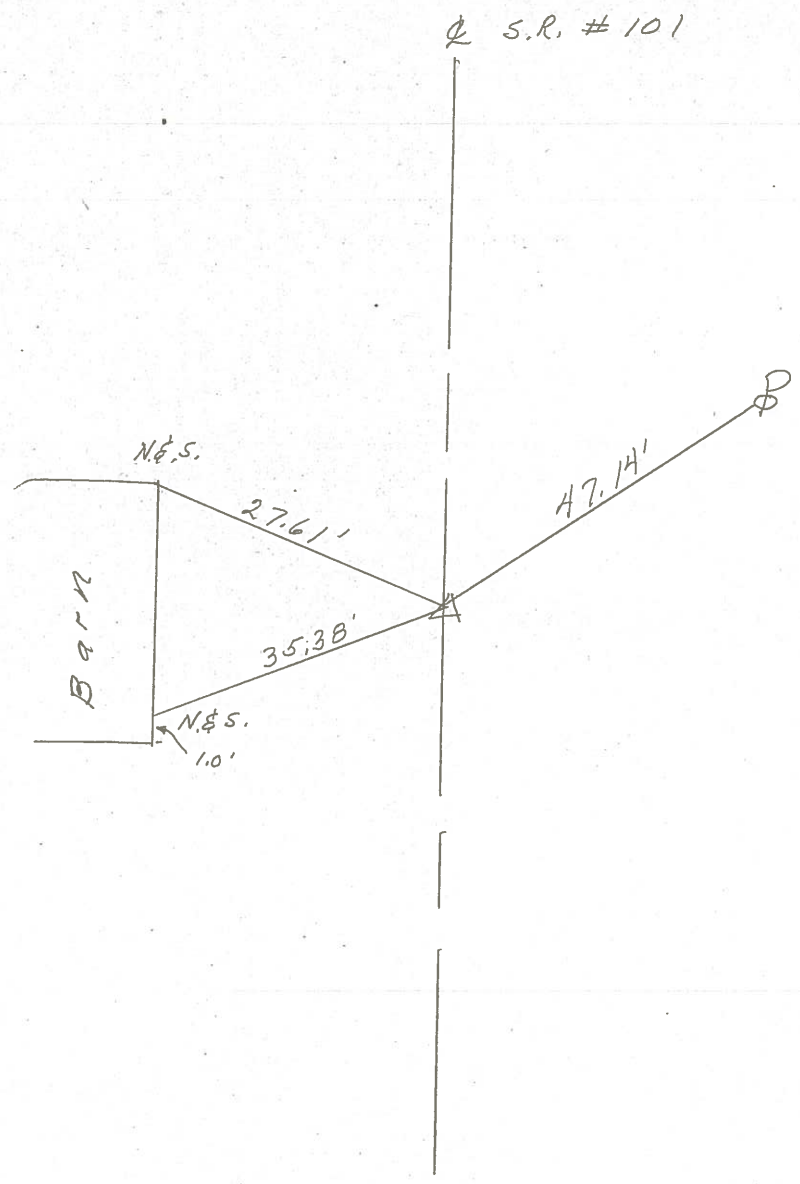
Barbour



46-A



56+00
 R.R. spk. on & R/w
 2" down 1' RT. of &
 Reset P. Ki Nail



PERSONNEL TITLE PERSONNEL TITLE

COUNTY Seneca DATE 2-11-64

KraBill
Kowaleski
Geyman
Bruggeman

S. R. #101 WEATHER
SEC. TEMP.

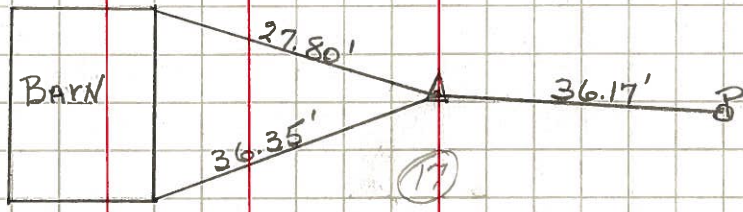
DESCRIPTION S.R. #101 Tiffin To Sen. Co. Line JOB NO.

LEFT CENTER LINE RIGHT

Adams

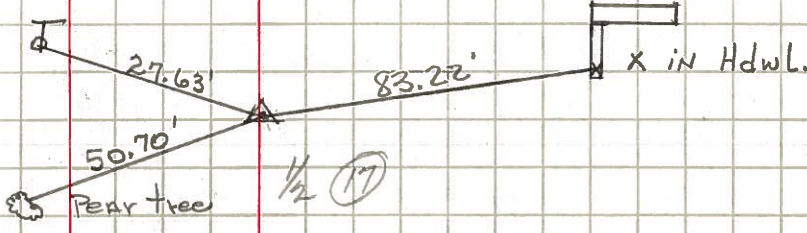
46

STA. 56+00
Iron Pin #395



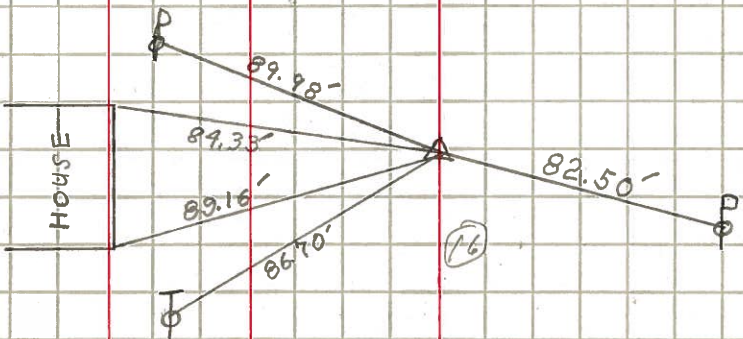
47

STA. 71+00
Iron Pin #396



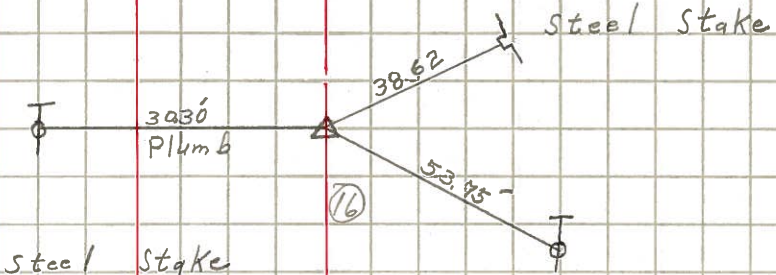
48

STA. 81+00
Iron Pin #397



49

STA. 90+00
Iron Pin #398



STA. 97+00
Iron Pin #399

