

O.D.O.T. DISTRICT 2 SURVEY OFFICE (USE ONLY)

PERSONNEL

REFERENCE NO. 47

SHEET 25 OF 46

NOTES HOMAN DATE 7-21-09  
 H.C. HOMAN WEATHER SUNNY  
 R.C. ROUSOS TEMP. 85°F

ROUTE SR 101  
 COUNTY SENECA  
 TOWNSHIP ADAMS  
 SECTION 17  
 T 3 N R 16 E

DWG BY MAHLER PID 100787

TYPE MONUMENT SQ HEADED NAIL/WASHER

ON SURFACE - ~~BELOW~~ ON

OFFSET Q PAVEMENT ON LT : RT

- TO - EDGE PAVEMENT

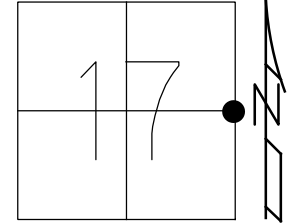
STATION: 580+80

HORZ.DATUM: NAD83 (2011)

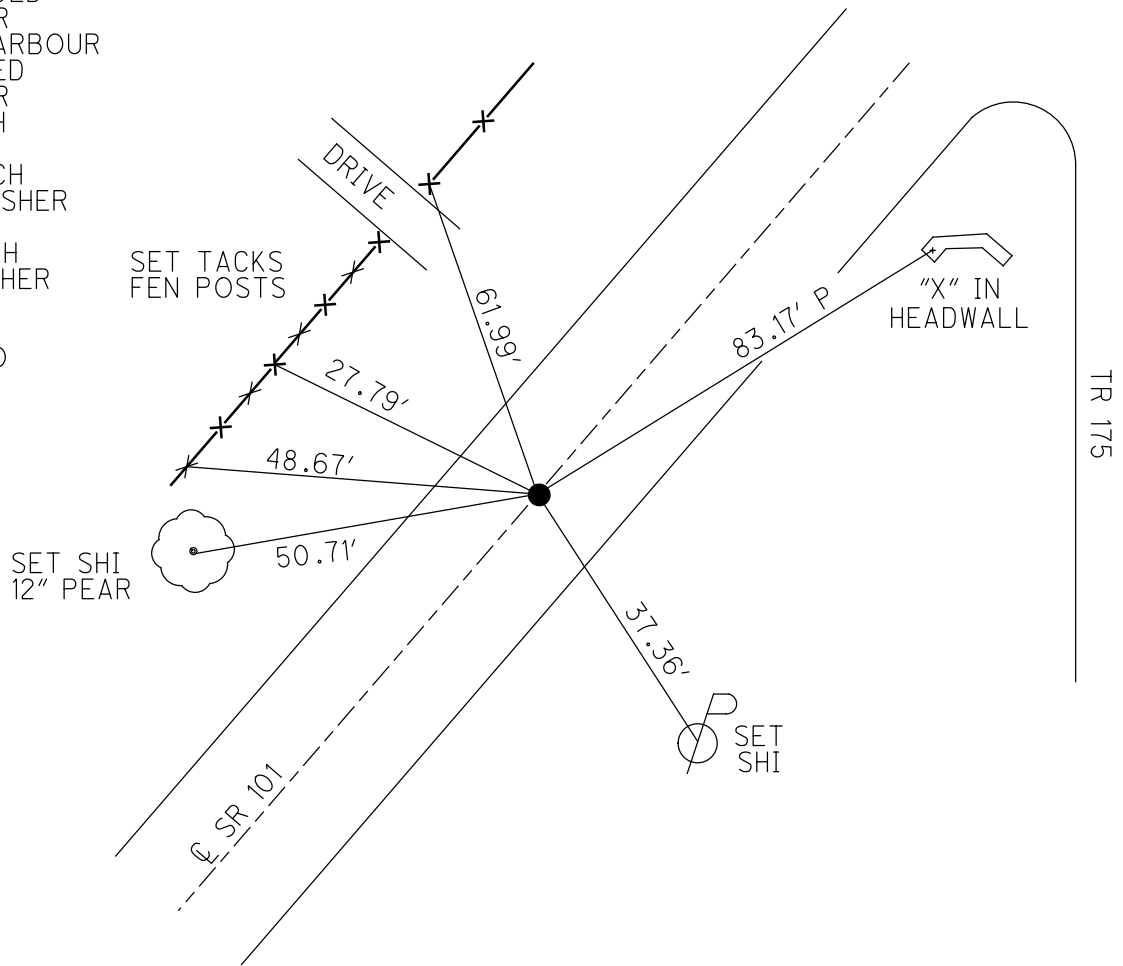
GEOID: NAVD88-2012A

GRID: NORTHING: 566432.842

EASTING: 1821289.739



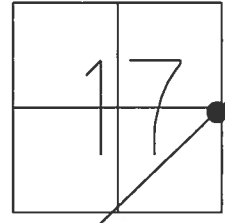
RECORD:  
 STA. 56+00  
 FD P.K.NAIL  
 ATOP R.R.SPIKE  
 SET SQ.HEADED  
 NAIL/WASHER  
 8/28/90, BARBOUR  
 FD SQ.HEADED  
 NAIL/WASHER  
 2/7/05, SAH  
 REF47  
 7/28/09, DCH  
 SET MAG/WASHER  
 NEWREF47  
 10/5/09, DCH  
 FD MAG/WASHER  
 REF47  
 6/14/16  
 9/18/17, JFO



O.D.O.T. DISTRICT 2 SURVEY OFFICE (USE ONLY)

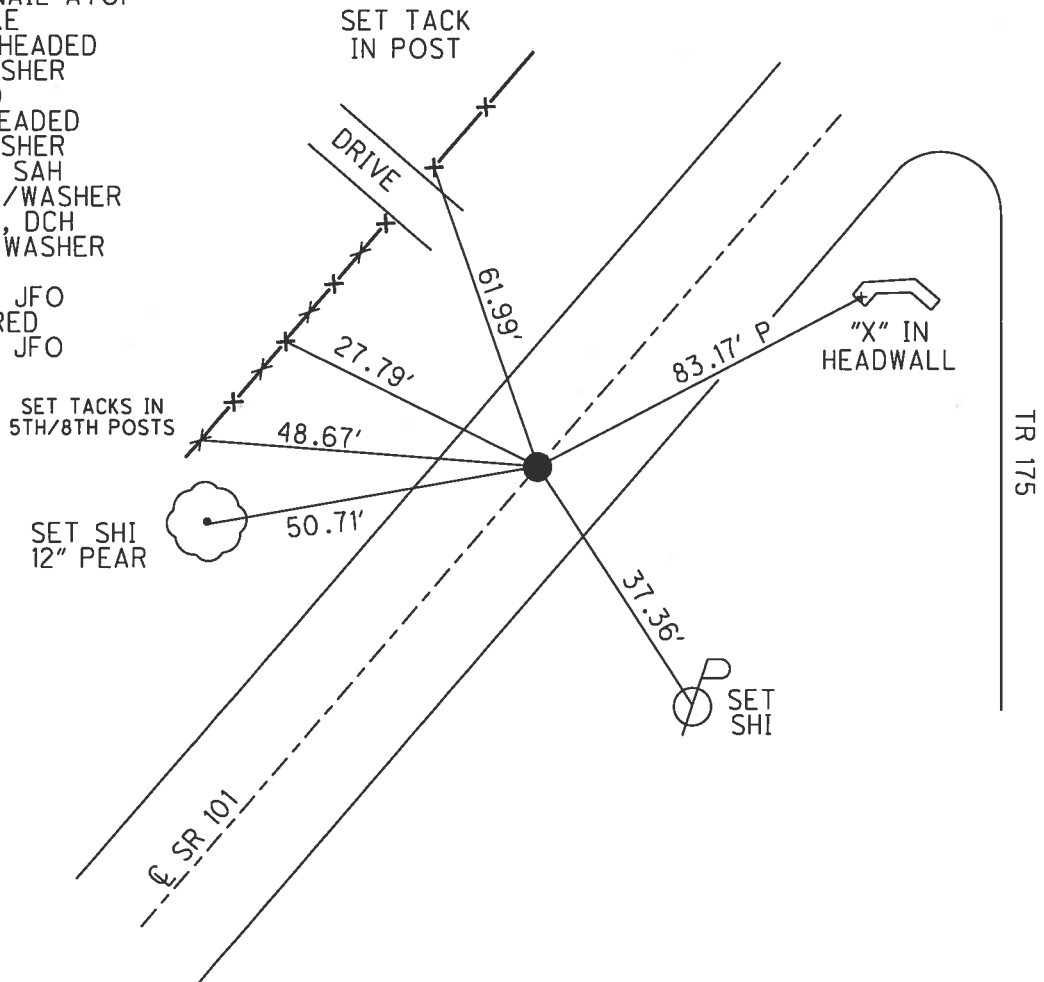
PERSONNEL \_\_\_\_\_ REFERENCE NO. 47 SHEET 25 OF 46  
 NOTES HOMAN DATE 7/21/09 ROUTE SR 101  
 H.C. HOMAN WEATHER SUNNY COUNTY SENECA  
 R.C. ROUSOS TEMP. 85° TOWNSHIP ADAMS  
 \_\_\_\_\_ SECTION 17  
 \_\_\_\_\_ T 3 N R 16 E

TYPE MONUMENT SQ. HEADED NAIL/WASHER  
 ON SURFACE - ~~BELOW~~ ON  
 LEFT - ☉ PAV'T - RIGHT ON  
 \_\_\_\_\_ TO \_\_\_\_\_ EDGE PAVEMENT  
 S.L.M. 580+80



GRID: NORTHING: 566432.842 EASTING: 1821289.739

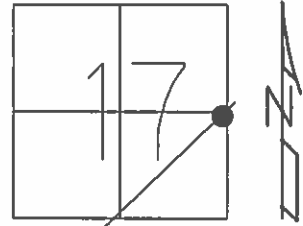
RECORD:  
 STA. 56+00  
 FD P.K. NAIL ATOP  
 R.R. SPIKE  
 SET SQ. HEADED  
 NAIL/WASHER  
 8/28/90  
 FD SQ. HEADED  
 NAIL/WASHER  
 2/7/05, SAH  
 SET MAG/WASHER  
 10/5/09, DCH  
 FD MAG/WASHER  
 REF 47  
 6/14/16, JFO  
 UNCOVERED  
 9/18/17, JFO



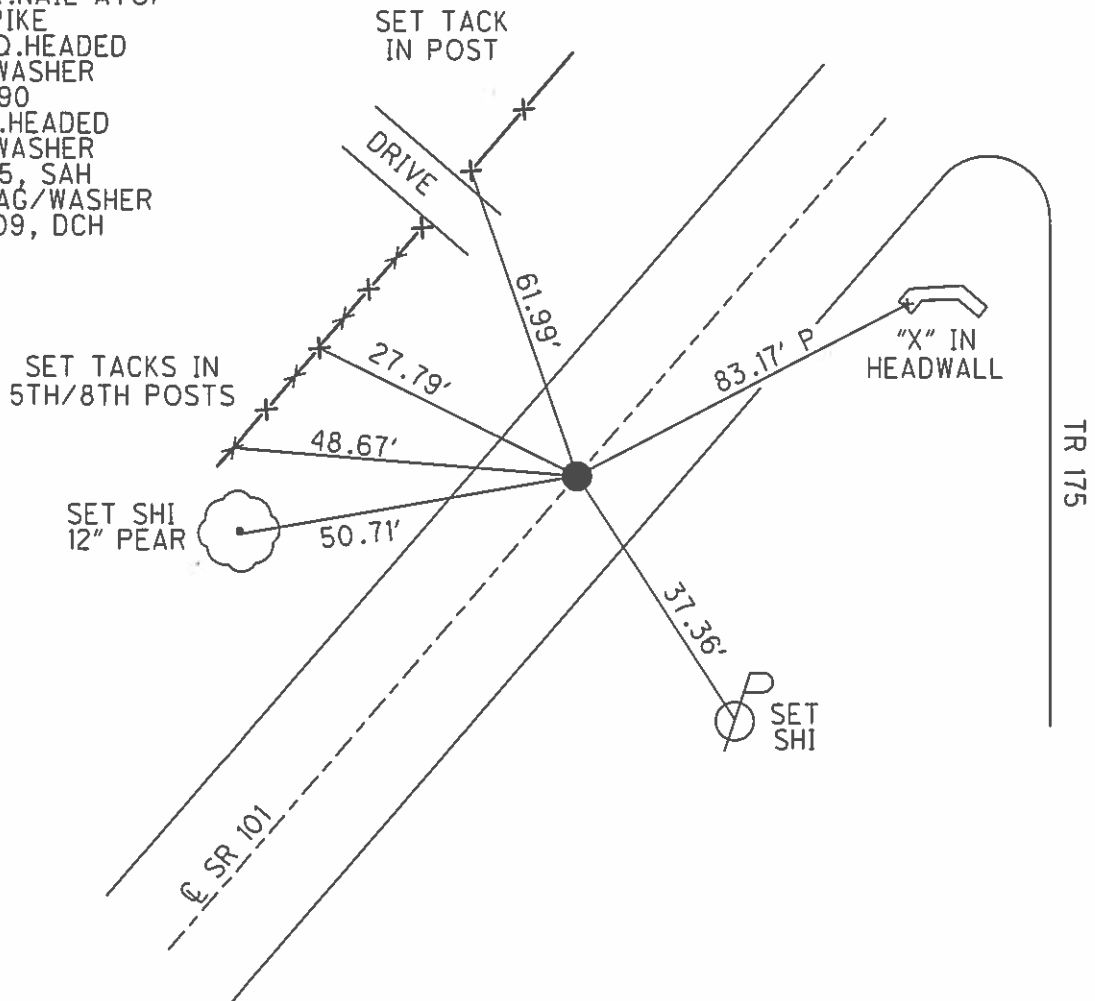
O.D.O.T. DISTRICT 2 SURVEY OFFICE (USE ONLY)

PERSONNEL \_\_\_\_\_ REFERENCE NO. 47 SHEET 25 OF 46  
 NOTES HOMAN DATE 7/21/09 ROUTE SR 101  
 H.C. HOMAN WEATHER SUNNY COUNTY SENECA  
 R.C. ROUSOS TEMP. 85° TOWNSHIP ADAMS  
 \_\_\_\_\_ SECTION 17  
 \_\_\_\_\_ T 3 N R 16 E

TYPE MONUMENT SQ. HEADED NAIL/WASHER  
 ON SURFACE - ~~BELOW~~ ON \_\_\_\_\_  
 LEFT - ☉ PAV'T - RIGHT ON \_\_\_\_\_  
 - TO - EDGE PAVEMENT  
 S.L.M. 580+80  
 GRID: NORTHING: 5566432.920 EASTING: 1821289.666



RECORD:  
 STA. 56+00  
 FD P.K.NAIL ATOP  
 R.R.SPIKE  
 SET SQ.HEADED  
 NAIL/WASHER  
 8/28/90  
 FD SQ.HEADED  
 NAIL/WASHER  
 2/7/05, SAH  
 SET MAG/WASHER  
 10/5/09, DCH



O.D.O.T. DISTRICT 2 SURVEY OFFICE

PERSONNEL

REFERENCE NO. 47

SHEET 21 OF 41

NOTES Ripple

H.C. BARBOUR

DATE 8/28/90

ROUTE SR# 101

R.C. GeyMAN

WEATHER SUNNY

COUNTY SENECA

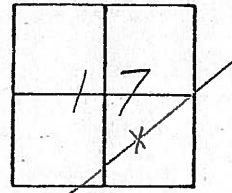
TEMP. 86°

TOWNSHIP ADAMS

SECTION 17

T 3 N R 16 E

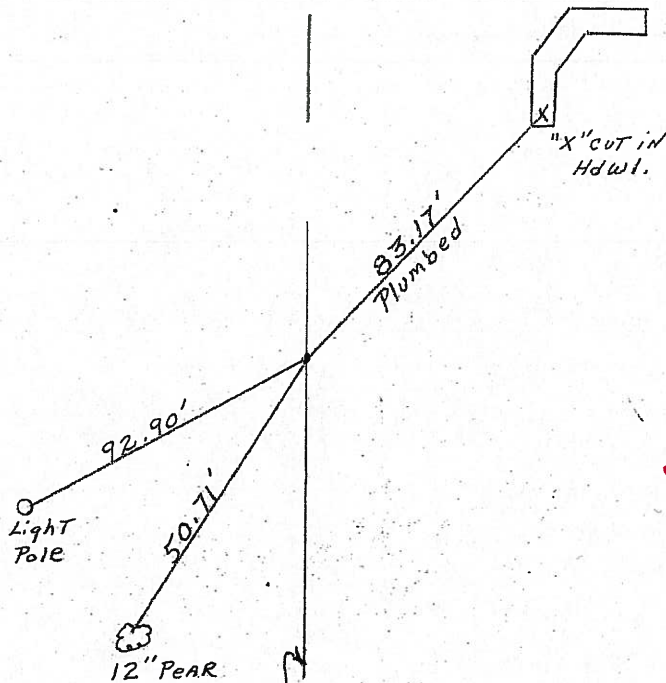
TYPE MONUMENT Set Square Headed Nail & shiner  
ON SURFACE - BELOW PK. Nail A Top RR spike  
LEFT - ☉ PAV'T. - RIGHT ☉ PAV'T.  
TO EDGE PAVEMENT  
S.L.M. \_\_\_\_\_



580+80



P.O.T. 71+00



& R/W SR# 101

Fd  
2-7-05  
SAH

O.D.O.T. DISTRICT 2 SURVEY OFFICE

PERSONNEL

REFERENCE NO. 47

SHEET 21 OF 41

NOTES Ripple

H.C. BARBOUR

DATE 8/28/90

ROUTE SR# 101

R.C. GeyMAN

WEATHER SUNNY

COUNTY Seneca

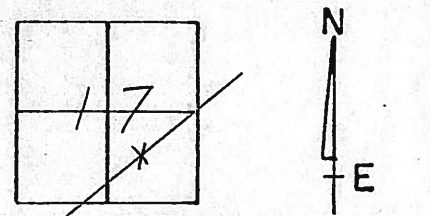
TEMP. 86°

TOWNSHIP ADAMS

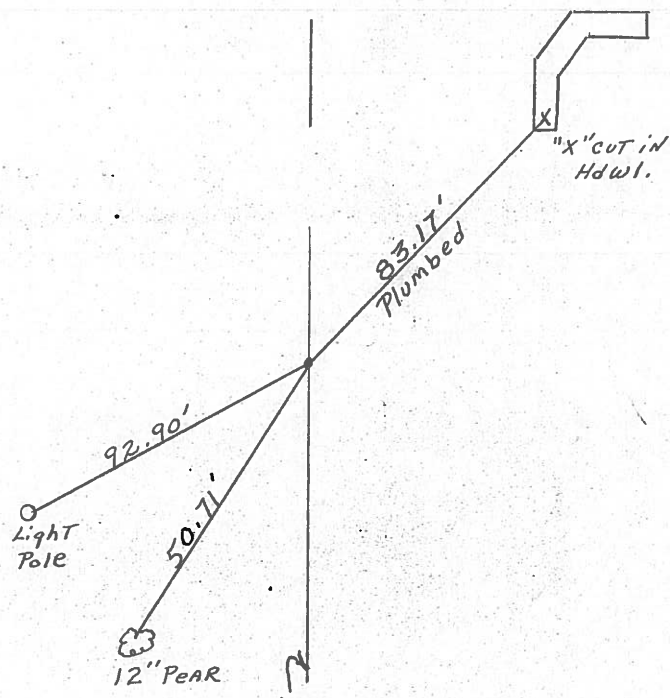
SECTION 17

T.3 N R 16 E

TYPE MONUMENT Set square headed nail & shiner  
ON SURFACE - BELOW P.K. nail a top RR spike  
LEFT - ℄ Pav't. - RIGHT ℄ Pav't.  
TO EDGE PAVEMENT  
S.L.M. \_\_\_\_\_



P.O.T. 71+00



℄ R/W SR# 101

County Seneca S.R. # 101

Township Adams

Section 17

T 3 N; R 16 E

Personnel Schneider

Mosser

Barbour

\_\_\_\_\_

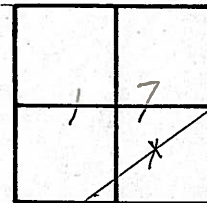
\_\_\_\_\_

Date 7-2-79

Weather Fair

Temp. 65°

47

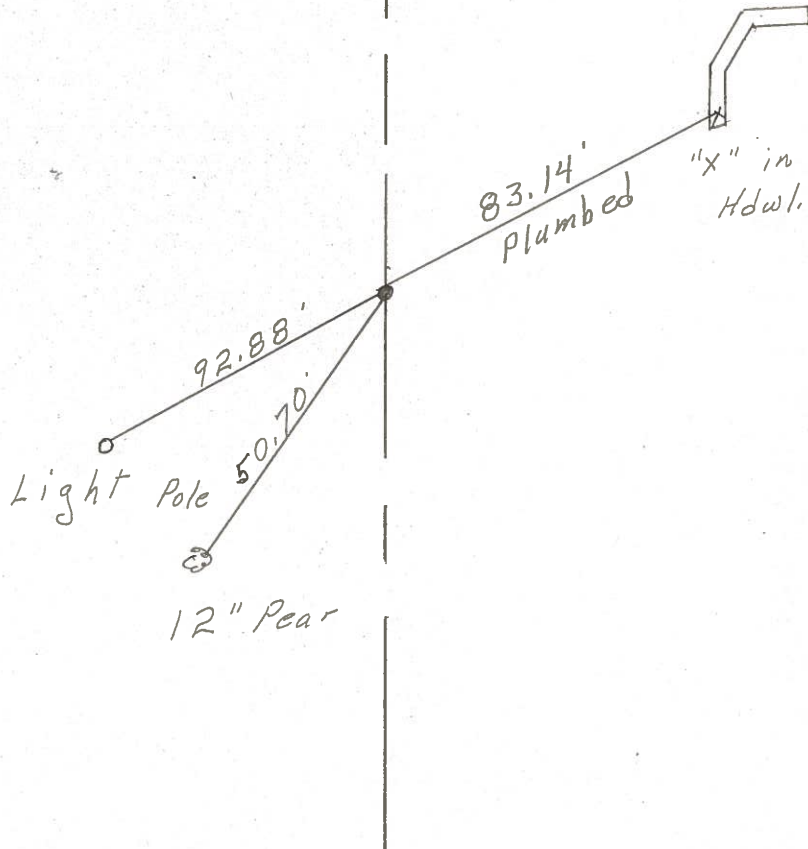


~~# 408~~



⊕ S.R. # 101

P.O.T.  
 71+00  
 R.R. spk. on ⊕ R/W  
 2" down  
 Reset P.K. Nail



PERSONNEL TITLE PERSONNEL TITLE

COUNTY Seneca

DATE 2-11-64

KraBill

Kowaleski

S. R. #101

WEATHER

Geyman

Bruggeman

SEC.

TEMP.

DESCRIPTION S.R. #101 Tiffin To Sen. Co. Line

JOB NO.

LEFT

CENTER LINE

RIGHT

Adams

46

STA. 56+00

Iron Pin

#395



27.80'

36.35'

36.17'

(17)



47

STA. 71+00

Iron Pin

#396

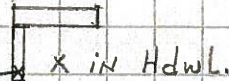
27.63'

83.22'

50.70'

Pear tree

1/2 (17)

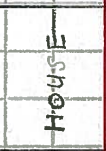


48

STA. 81+00

Iron Pin

#397



89.38'

89.16'

86.70'

82.50'

(16)

49

STA. 90+00

Iron Pin

#398

3030 Plumb

38.62'

53.75'

Steel Stake

Steel Stake

STA. 97+00

Iron Pin

#399

51.50'

steel stake

27.77'

46.86'

(16)