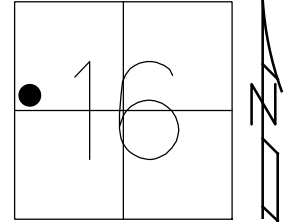


O.D.O.T. DISTRICT 2 SURVEY OFFICE (USE ONLY)

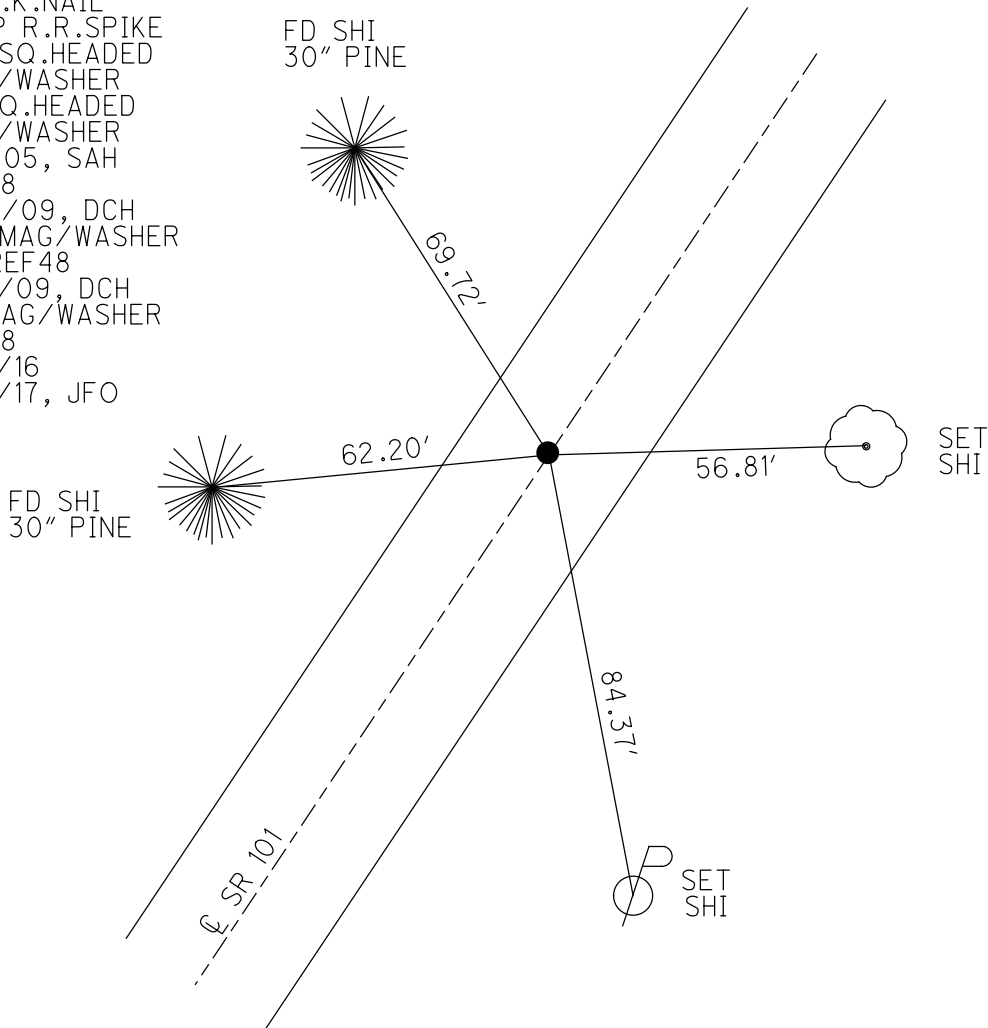
PERSONNEL \_\_\_\_\_ REFERENCE NO. 48 SHEET 26 OF 46  
 NOTES HOMAN DATE 7-21-09 ROUTE SR 101  
 H.C. HOMAN WEATHER SUNNY COUNTY SENECA  
 R.C. ROUSOS TEMP. 85°F TOWNSHIP ADAMS  
 DWG BY MAHLER PID 100787 SECTION 16  
 T 3 N R 16 E

TYPE MONUMENT SQ HEADED NAIL/WASHER  
 ON SURFACE - ~~BELOW~~ ON  
 OFFSET ☉ PAVEMENT ON LT : RT  
- TO - EDGE PAVEMENT  
 STATION: 590+83



HORIZ.DATUM: NAD83 (2011) GEOID: NAVD88-2012A  
 GRID: NORTHING: 567088.109 EASTING: 1822046.942

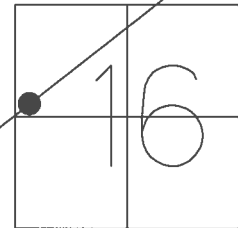
RECORD: P.O.T.  
 STA. 81+00  
 FD P.K.NAIL  
 ATOP R.R.SPIKE  
 SET SQ.HEADED  
 NAIL/WASHER  
 FD SQ.HEADED  
 NAIL/WASHER  
 2/7/05, SAH  
 REF48  
 7/28/09, DCH  
 SET MAG/WASHER  
 NEWREF48  
 10/6/09, DCH  
 FD MAG/WASHER  
 REF48  
 6/14/16  
 9/18/17, JFO



O.D.O.T. DISTRICT 2 SURVEY OFFICE (USE ONLY)

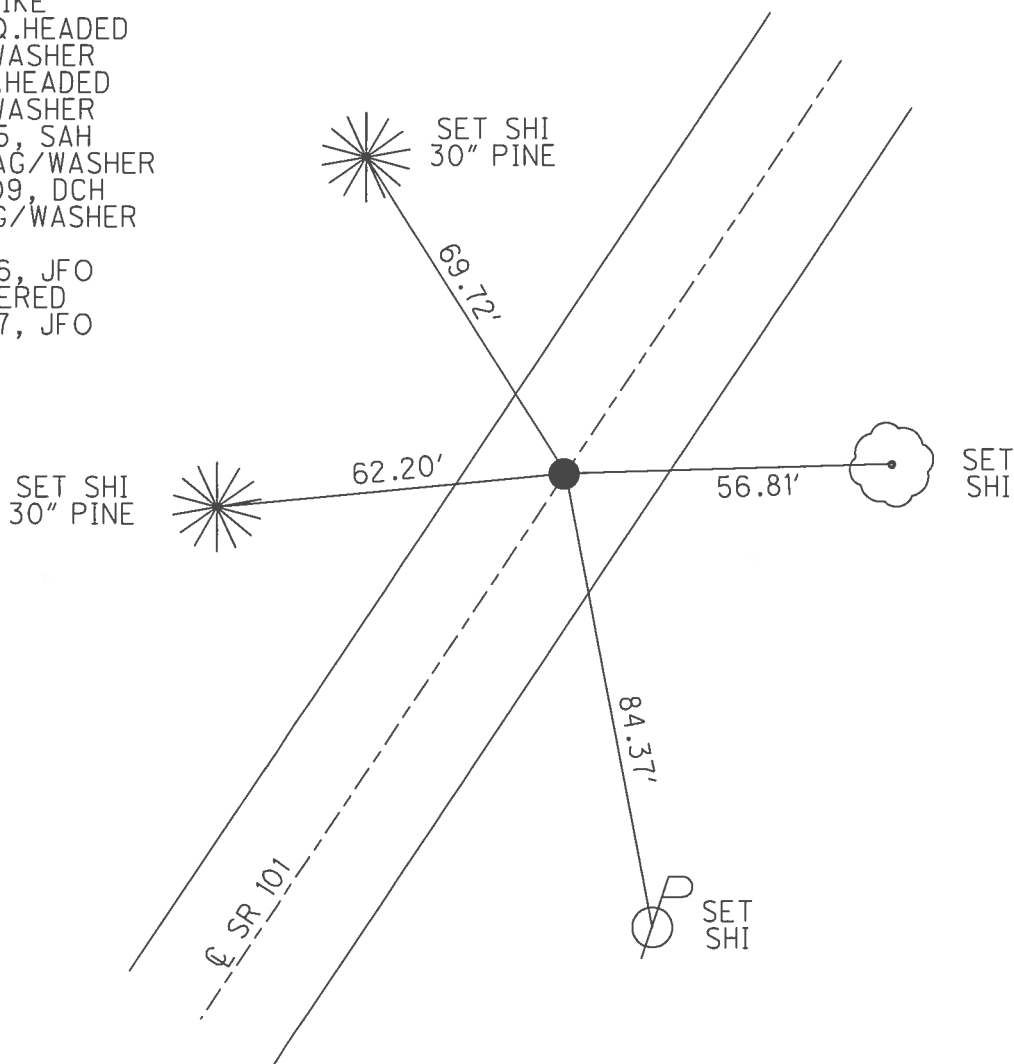
PERSONNEL \_\_\_\_\_ REFERENCE NO. 48 SHEET 26 OF 46  
 NOTES HOMAN DATE 7/21/09 ROUTE SR 101  
 H.C. HOMAN WEATHER SUNNY COUNTY SENECA  
 R.C. ROUSOS TEMP. 85° TOWNSHIP ADAMS  
 \_\_\_\_\_ SECTION 16  
 \_\_\_\_\_ T 3 N R 16 E

TYPE MONUMENT SQ.HEADED NAIL/WASHER  
 ON SURFACE - ~~BELOW~~ ON  
 LEFT - ☉ PAV'T - RIGHT ON  
 \_\_\_\_\_ TO \_\_\_\_\_ EDGE PAVEMENT  
 S.L.M. 590+83



GRID: NORTHING: 567088.076 EASTING: 1822046.942

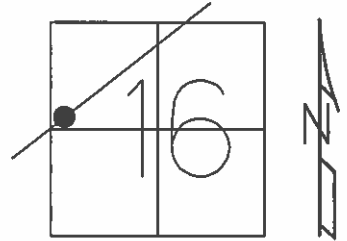
RECORD: P.O.T.  
 STA. 81+00  
 FD P.K.NAIL ATOP  
 R.R.SPIKE  
 SET SQ.HEADED  
 NAIL/WASHER  
 FD SQ.HEADED  
 NAIL/WASHER  
 2/7/05, SAH  
 SET MAG/WASHER  
 10/6/09, DCH  
 FD MAG/WASHER  
 REF48  
 6/14/16, JFO  
 UNCOVERED  
 9/18/17, JFO



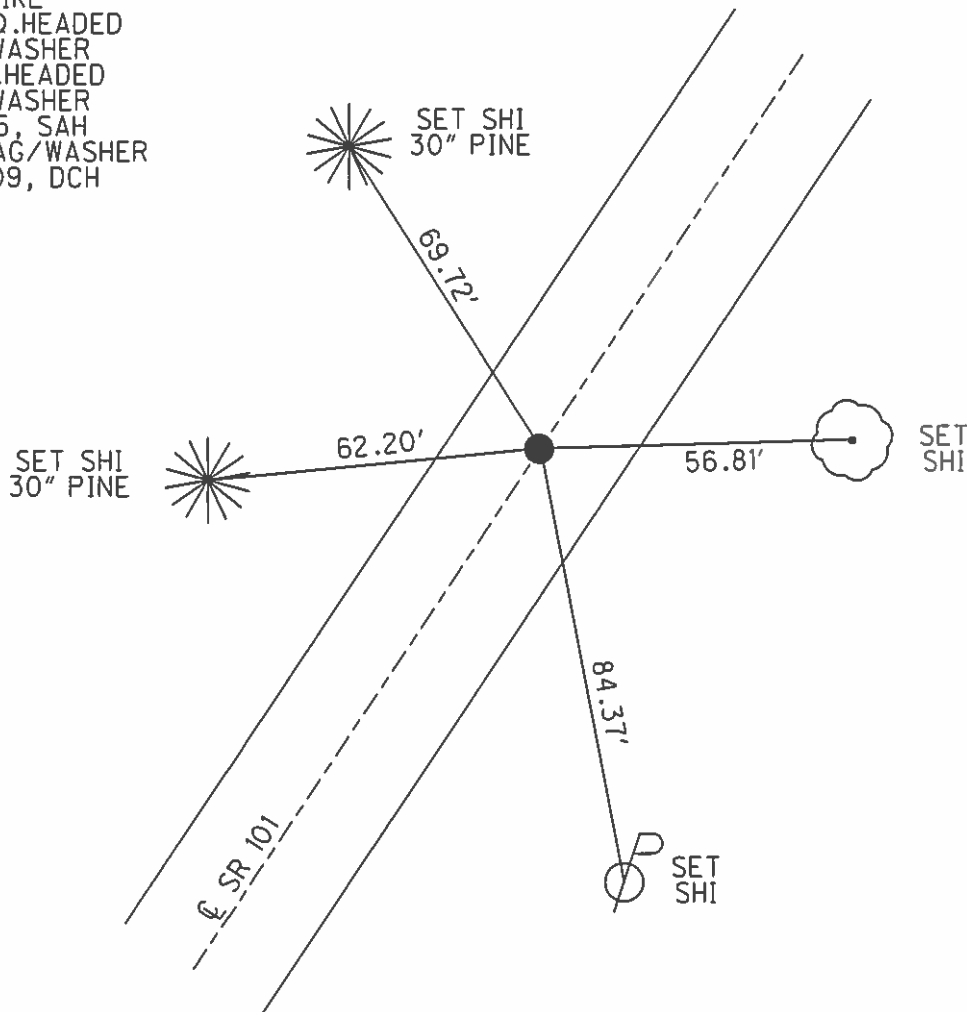
O.D.O.T. DISTRICT 2 SURVEY OFFICE (USE ONLY)

PERSONNEL \_\_\_\_\_ REFERENCE NO. 48 SHEET 26 OF 46  
 NOTES HOMAN DATE 7/21/09 ROUTE SR 101  
 H.C. HOMAN WEATHER SUNNY COUNTY SENECA  
 R.C. ROUSOS TEMP. 85° TOWNSHIP ADAMS  
 \_\_\_\_\_ SECTION 16  
 \_\_\_\_\_ T 3 N R 16 E

TYPE MONUMENT SQ. HEADED NAIL/WASHER  
 ON SURFACE - ~~BELOW~~ ON \_\_\_\_\_  
 LEFT - ☉ PAV'T - RIGHT ON \_\_\_\_\_  
 \_\_\_\_\_ TO \_\_\_\_\_ EDGE PAVEMENT  
 S.L.M. 590+83



RECORD: P.O.T.  
 STA. 81+00  
 FD P.K. NAIL ATOP  
 R.R. SPIKE  
 SET SQ. HEADED  
 NAIL/WASHER  
 FD SQ. HEADED  
 NAIL/WASHER  
 2/7/05, SAH  
 SET MAG/WASHER  
 10/6/09, DCH



O.D.O.T. DISTRICT 2 SURVEY OFFICE

PERSONNEL

REFERENCE NO. 48

SHEET 22 OF 41

NOTES RIPPLE

H.C. BARBOUR

DATE 8/28/90

ROUTE SR #101

R.G. Geyman

WEATHER SUNNY

COUNTY SENECA

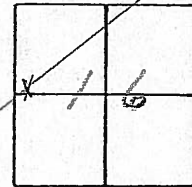
TEMP. 86°

TOWNSHIP ADAMS

SECTION 16

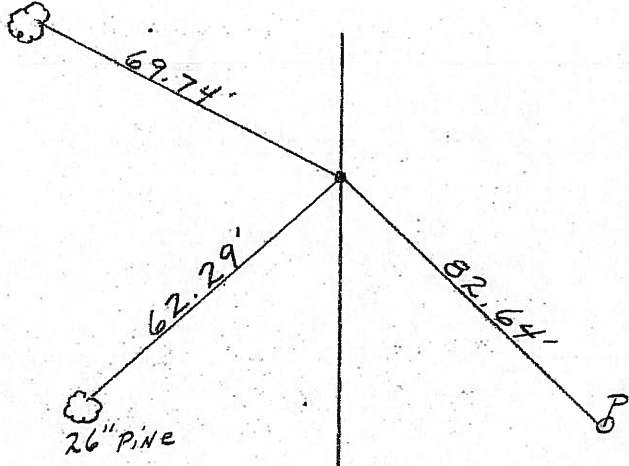
T 3 N R 16 E

TYPE MONUMENT Set Square Headed Nail & washer  
ON SURFACE - BELOW PK Nail A Top RR spike  
LEFT - ¢ PAV'T. - RIGHT ¢ PAV'T.  
TO EDGE PAVEMENT  
S.L.M. \_\_\_\_\_



~~590+83~~  
590+83

P.O.T. 81+00



Fd  
2-7-05  
SAH

E R/W SR #101

O.D.O.T. DISTRICT 2 SURVEY OFFICE

PERSONNEL

REFERENCE NO. 48

SHEET 22 OF 41

NOTES Ripple

H.C. BARBOUR

DATE 8/28/90

ROUTE SR#101

R.C. Geyman

WEATHER SUNNY

COUNTY SENECA

TEMP. 86°

TOWNSHIP ADAMS

SECTION 16

T3 N R 16 E

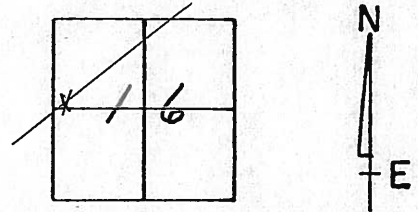
TYPE MONUMENT SET SQUARE HEADED NAIL & WASHER

ON SURFACE - BELOW PK NAIL AT TOP RR SPIKE

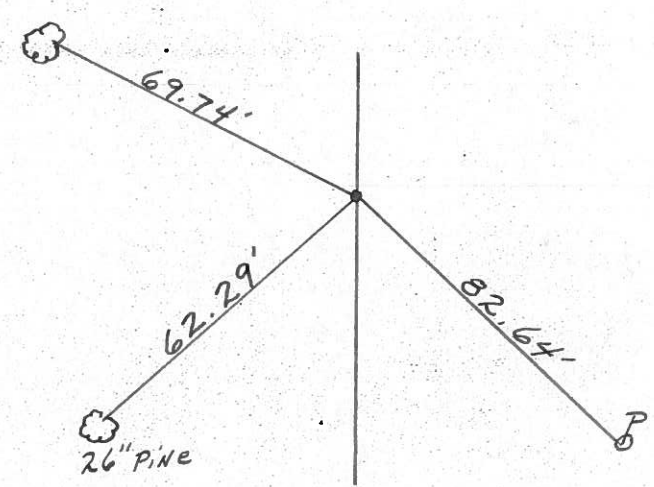
LEFT - & PAV'T. - RIGHT & PAV'T.

TO EDGE PAVEMENT

S.L.M. \_\_\_\_\_



P.O.T. 81+00



& R/W SR # 101

Q.D.O.T. DISTRICT 2 SURVEY OFFICE

Sht.      of     

County Seneca S.R. # 101

Date 7-2-79

Township Adams

Weather Fair

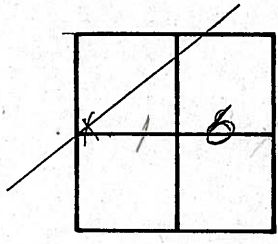
Section 18

Temp. 65°

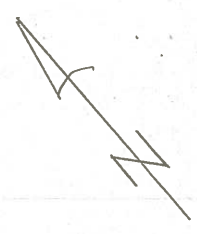
T3N, R16E

Personnel Schneider  
Mosser  
Barbour

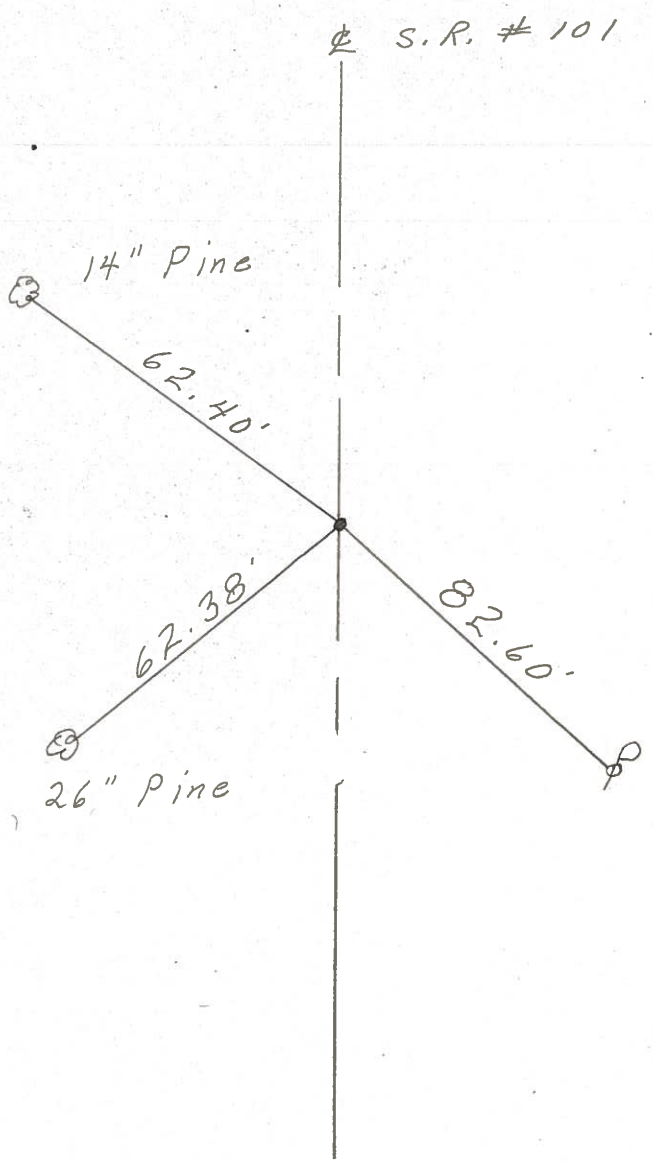
48



~~#47~~



P. O. T.  
81+00  
R.R. spk. on E R/W  
2" down  
Reset P.K. Nail



PERSONNEL TITLE PERSONNEL TITLE

COUNTY Seneca

DATE 2-11-64

Kra Bill

Kowaleski

Geyman

Bruggeman

S. R. #101

WEATHER

SEC.

TEMP.

DESCRIPTION S.R. #101 Tiffin To Sen. Co. Line

JOB NO.

LEFT

CENTER LINE

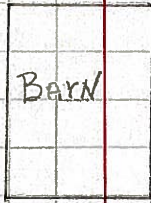
RIGHT

Adams

46

STA. 56+00

Iron Pin #395



27.80'

36.35'

36.17'

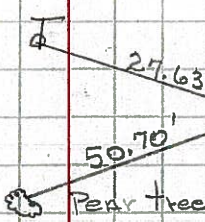
(17)



47

STA. 71+00

Iron Pin #396



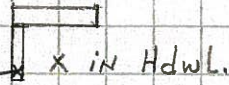
27.63'

50.70'

Pear tree

83.22'

1/2 (17)

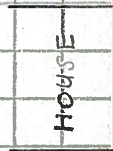


X in Hdwl.

48

STA. 81+00

Iron Pin #397



HOUSE

89.98'

89.35'

89.15'

86.70'

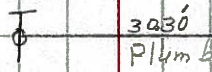
82.50'

(16)

49

STA. 90+00

Iron Pin #398



3x30 plumb

38.62'

53.35'

Steel Stake

(16)

STA. 97+00

Iron Pin #399

Steel Stake

steel stake

51.50'

27.77'

46.86'

(16)