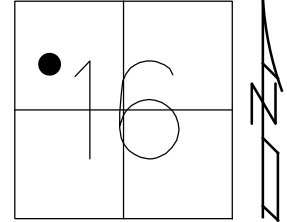


O.D.O.T. DISTRICT 2 SURVEY OFFICE (USE ONLY)

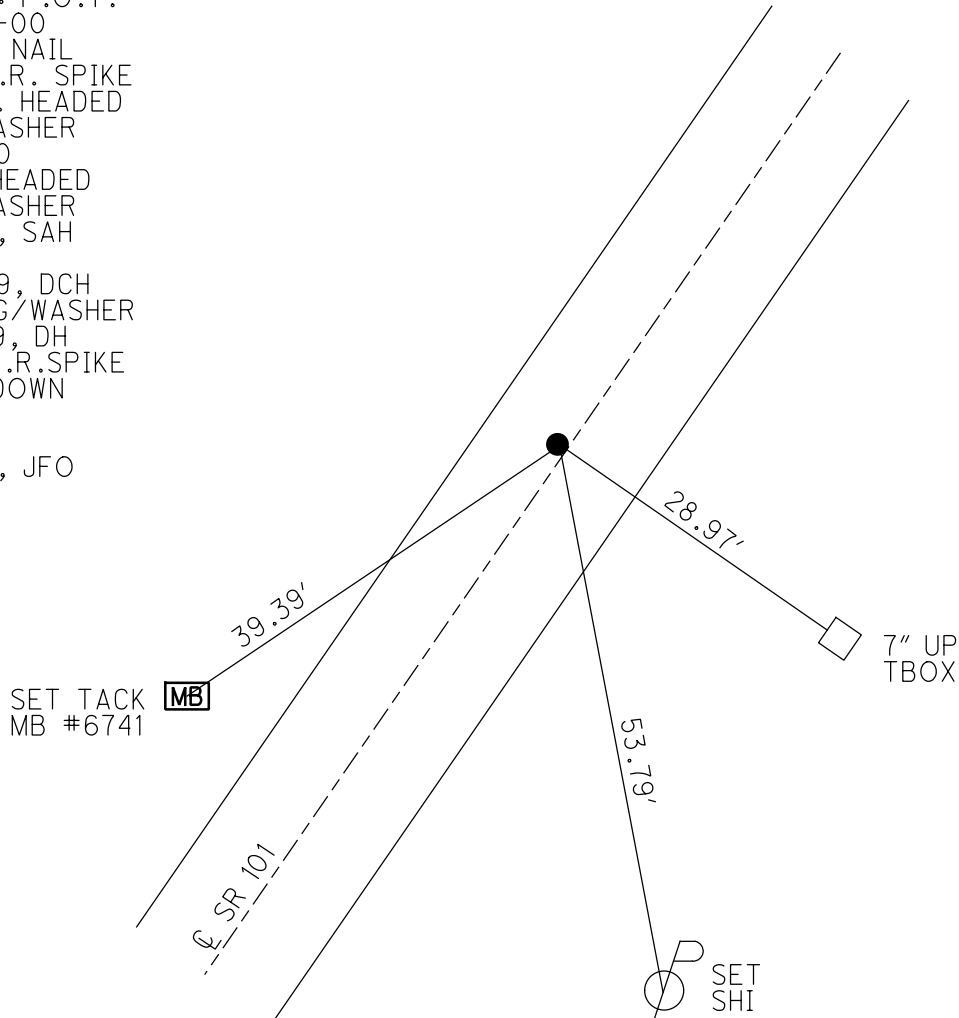
PERSONNEL \_\_\_\_\_ REFERENCE NO. 49 SHEET 27 OF 46  
 NOTES RHOADES DATE 3-28-17 ROUTE SR 101  
 H.C. O'DONNELL WEATHER MIST COUNTY SENECA  
 R.C. RHOADES TEMP. 42°F TOWNSHIP ADAMS  
 DWG BY MAHLER PID 100787 SECTION 16  
 T 3 N R 16 E

TYPE MONUMENT LG.R.R.SPIKE  
~~ON SURFACE~~ - BELOW 6 1/2"  
 OFFSET Q PAVEMENT 1' LT : RT  
- TO - EDGE PAVEMENT  
 STATION: 599+82



HORZ.DATUM: NAD83 (2011) GEOID: NAVD88-2012A  
 GRID: NORTHING: 567676.511 EASTING: 1822727.247

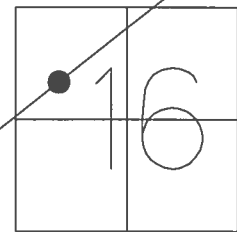
RECORD: P.O.T.  
 STA.90+00  
 FD P.K. NAIL  
 ATOP R.R. SPIKE  
 SET SQ. HEADED  
 NAIL/WASHER  
 8/23/90  
 FD SQ.HEADED  
 NAIL/WASHER  
 2/7/05, SAH  
 REF49  
 7/28/09, DCH  
 SET MAG/WASHER  
 10/6/09, DH  
 FD LG.R.R.SPIKE  
 6 1/2" DOWN  
 REF49  
 6/14/16  
 9/18/17, JFO



O.D.O.T. DISTRICT 2 SURVEY OFFICE (USE ONLY)

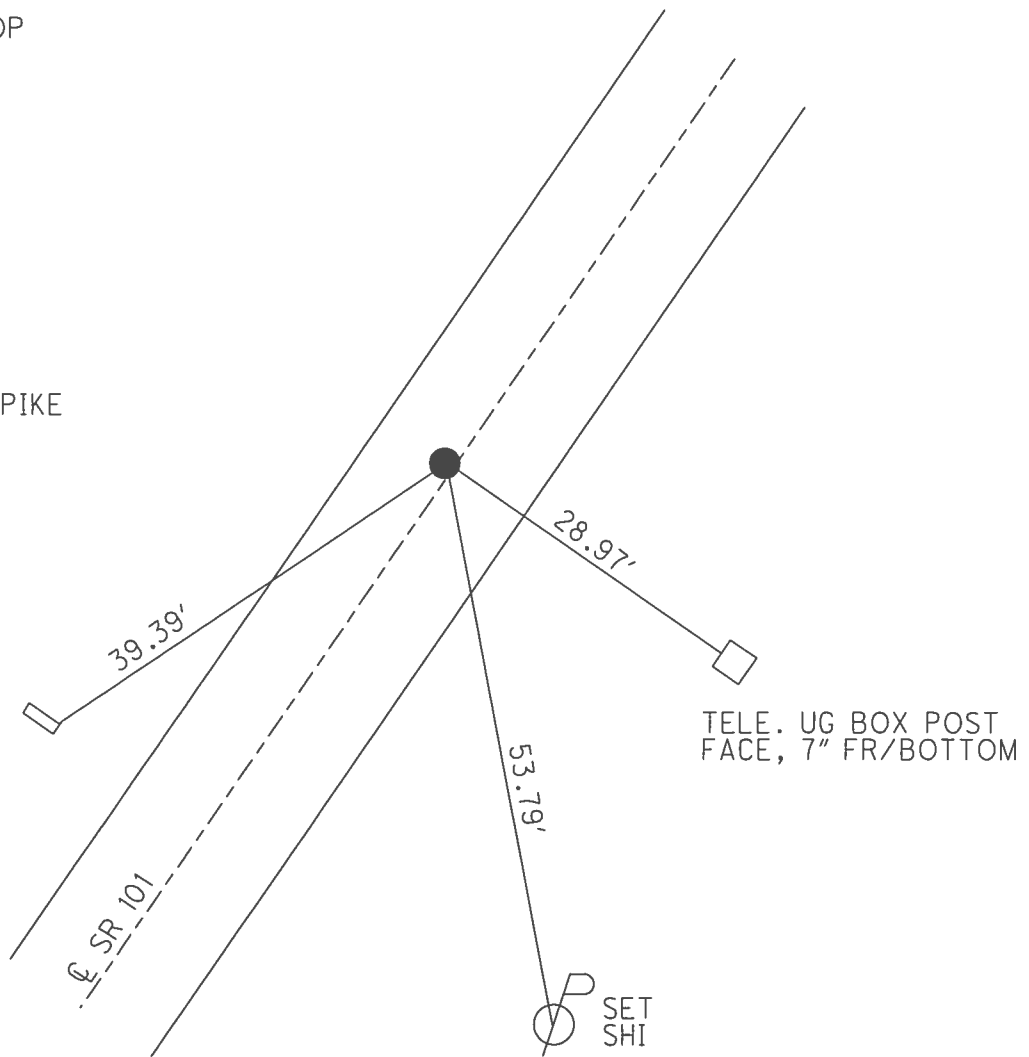
PERSONNEL \_\_\_\_\_ REFERENCE NO. 49 SHEET 27 OF 46  
 NOTES RHOADES DATE 3/28/17 ROUTE SR 101  
 H.C. O'DONNELL WEATHER MIST COUNTY SENECA  
 R.C. RHOADES TEMP. 42° TOWNSHIP ADAMS  
 \_\_\_\_\_ SECTION 16  
 \_\_\_\_\_ T 3 N R 16 E

TYPE MONUMENT LG.R.R.SPIKE  
~~ON SURFACE~~ - BELOW 6 1/2"  
 LEFT - ☉ PAV'T - ~~RIGHT~~ 1'  
 \_\_\_\_\_ TO \_\_\_\_\_ EDGE PAVEMENT  
 S.L.M. 599+82



GRID: NORTHING: 567676.511 EASTING: 1822727.247

RECORD: P.O.T.  
 STA.90+00  
 FD P.K. NAIL ATOP  
 R.R. SPIKE  
 SET SQ. HEADED  
 NAIL/WASHER  
 8/23/90  
 FD SQ.HEADED  
 NAIL/WASHER  
 2/7/05, SAH  
 SET MAG/WASHER  
 10/6/09, DH  
 FD LG.R.R.SPIKE  
 6 1/2" DOWN  
 REF49  
 6/14/16, JFO  
 FD HOLE W/R.R.SPIKE  
 COVERED W/SAND  
 9/18/17, JFO



SET TACK N/S IN  
 MAILBOX #6741

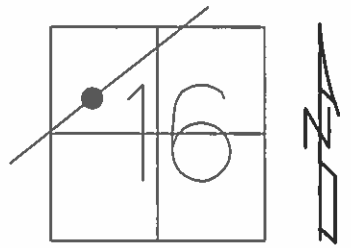
TELE. UG BOX POST  
 FACE, 7" FR/BOTTOM

SET  
 SHI

**O.D.O.T. DISTRICT 2 SURVEY OFFICE (USE ONLY)**

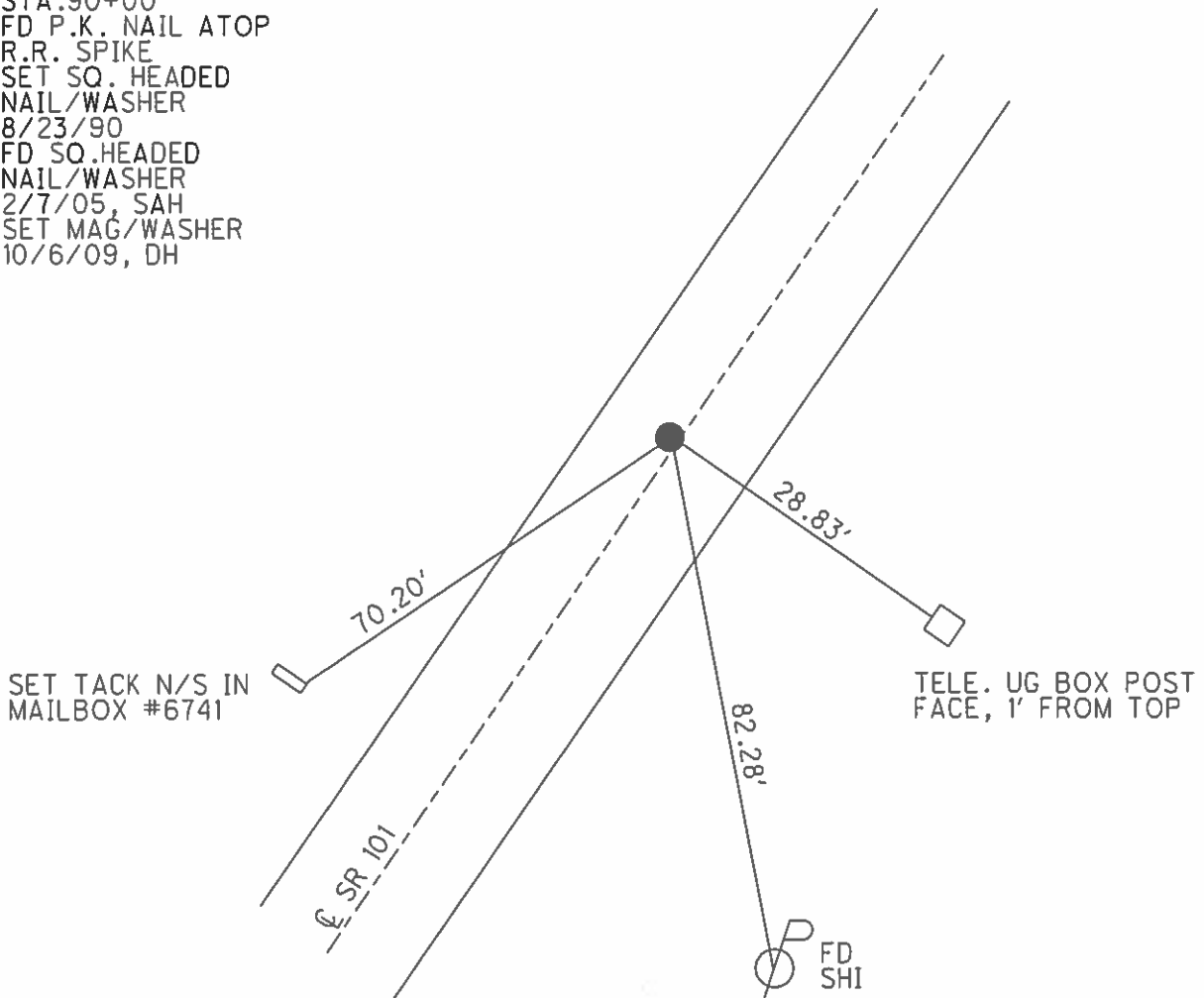
PERSONNEL \_\_\_\_\_ REFERENCE NO. 49 SHEET 27 OF 46  
 NOTES HOMAN DATE 7/21/09 ROUTE SR 101  
 H.C. HOMAN WEATHER SUNNY COUNTY SENECA  
 R.C. ROUSOS TEMP. 85° TOWNSHIP ADAMS  
 \_\_\_\_\_ SECTION 16  
 \_\_\_\_\_ T 3 N R 16 E

TYPE MONUMENT SQ. HEADED NAIL/WASHER  
 ON SURFACE - ~~BELOW~~ ON  
 LEFT - ☉ PAV'T - ~~RIGHT~~ 1'  
 \_\_\_\_\_ TO \_\_\_\_\_ EDGE PAVEMENT  
 S.L.M. 599+82



GRID: NORTHING: 567696.183 EASTING: 1822752.287

RECORD: P.O.T.  
 STA. 90+00  
 FD P.K. NAIL ATOP  
 R.R. SPIKE  
 SET SQ. HEADED  
 NAIL/WASHER  
 8/23/90  
 FD SQ. HEADED  
 NAIL/WASHER  
 2/7/05, SAH  
 SET MAG/WASHER  
 10/6/09, DH



O.D.O.T. DISTRICT 2 SURVEY OFFICE

PERSONNEL

REFERENCE NO. 49

SHEET 23 OF 41

NOTES RIPPLE

H.C. BARBOUR

R.C. GEYMAN

DATE 8/23/90

WEATHER SUNNY

TEMP. 86°

ROUTE SR#101

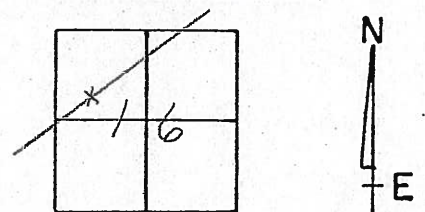
COUNTY Seneca

TOWNSHIP Adams

SECTION 16

T. 3 N R. 16 E

TYPE MONUMENT Set. Square Headed Nail & washer  
ON SURFACE - BELOW PK. Nail a Top RR spike  
LEFT - ¢ PAV'T. - RIGHT 1/4 LT. & PAV'T.  
TO EDGE PAVEMENT  
S.L.M. \_\_\_\_\_

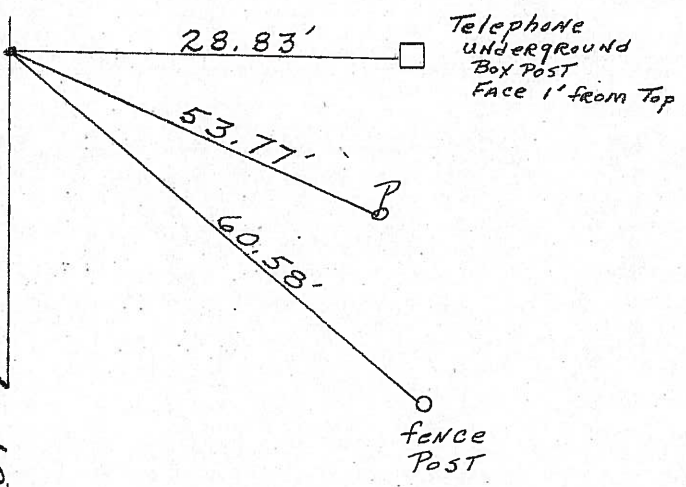


599 + 82

P.O.T. 90+00

SR#101

Fd  
2-7-05  
SAH



O.D.O.T. DISTRICT 2 SURVEY OFFICE

PERSONNEL

REFERENCE NO. 49A

SHEET 23 OF 41

NOTES Ripple

H.C. BARBOUR

DATE 8/23/90

ROUTE SR#101

R.C. GEYMAN

WEATHER SUNNY

COUNTY Seneca

TEMP. 86°

TOWNSHIP Adams

SECTION 16

T 3 N R 16 E

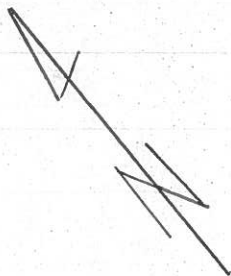
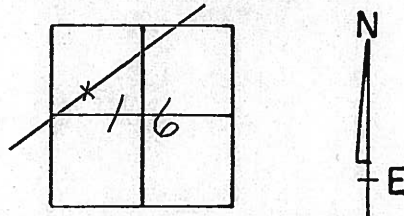
TYPE MONUMENT Set. Square Headed Nail & washer

ON SURFACE - BELOW P.K. Nail A Top RR spike

LEFT - ☉ PAV'T. - RIGHT 1/4 LT. & PAV'T.

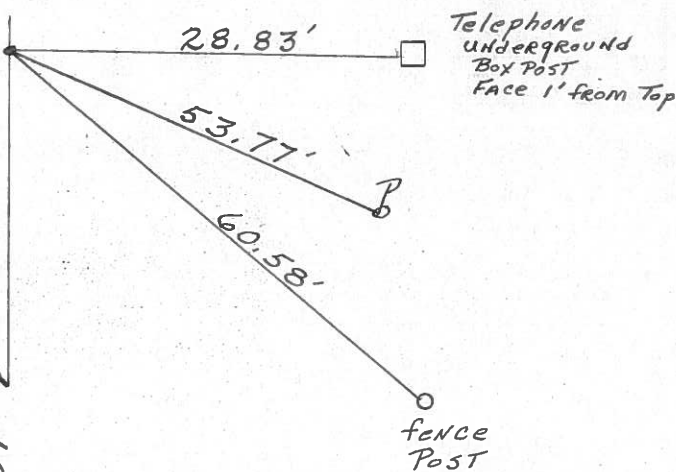
TO EDGE PAVEMENT

S.L.M. \_\_\_\_\_



P.O.T. 90+00

R/W SR#101



Q.D.O.T. DISTRICT 2 SURVEY OFFICE

Sht.      of     

County Seneca S.R. # 101

Date 7-2-79

Township Adams

Weather Fair

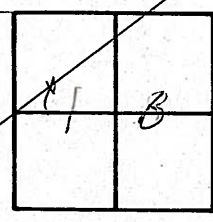
Section 16

Temp. 65°

T3N, R16E

Personnel Schneider  
Mosser  
Barbour

49

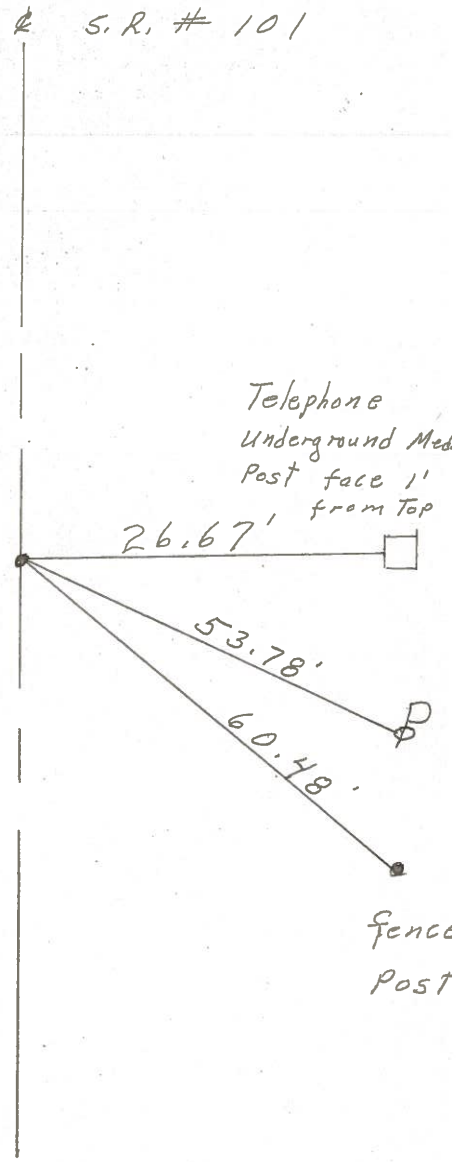


# ~~47-A~~



S.R. # 101

P.O.T.  
90+00  
R.R. spk. on E R/W.  
2" down 1' Lt. E  
Reset P.K. Nail



PERSONNEL TITLE PERSONNEL TITLE

COUNTY Seneca

DATE 2-11-64

Kra Bill

Kowaleski

Geyman

Bruggeman

S. R. #101

WEATHER

SEC.

TEMP.

DESCRIPTION S.R. #101 Tiffin To Sar. Co. Line

JOB NO.

LEFT

CENTER LINE

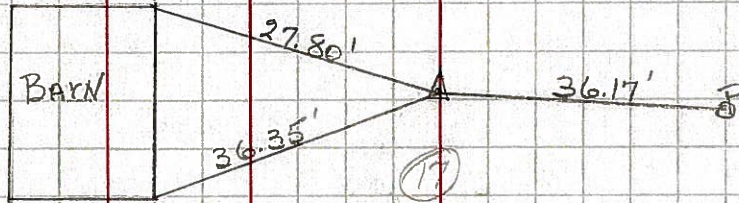
RIGHT

Adams

46

STA. 56+00

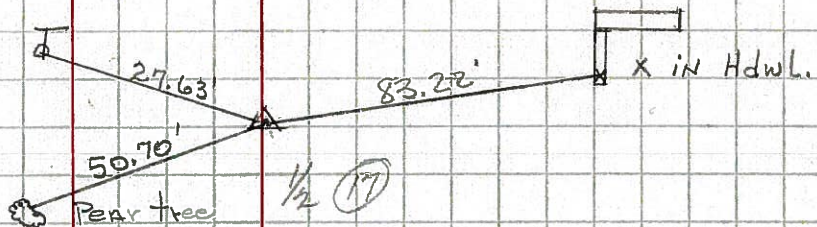
Iron Pin #395



47

STA. 71+00

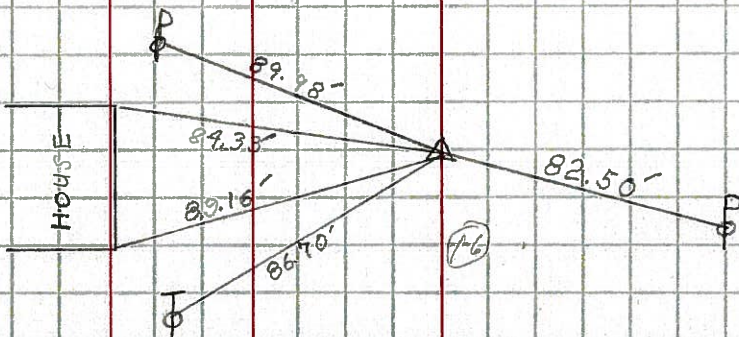
Iron Pin #396



48

STA. 81+00

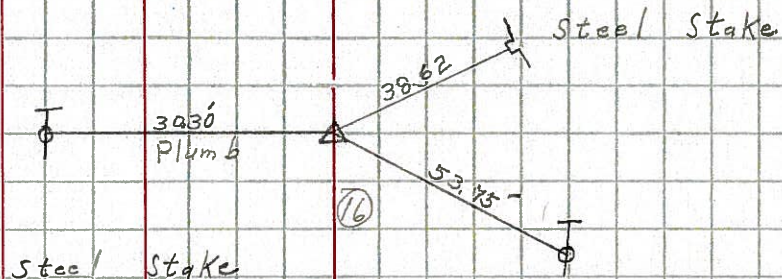
Iron Pin #397



49

STA. 90+00

Iron Pin #398



STA. 97+00

Iron Pin #399

