

O.D.O.T. DISTRICT 2 SURVEY OFFICE

PERSONNEL

REFERENCE NO. 47 B

SHEET 24 OF 44

NOTES RIPPLE

H.C. BARBOUR

DATE 8/24/90

ROUTE SR #101

R.C. GEYMAN

WEATHER SUNNY

COUNTY SENECA

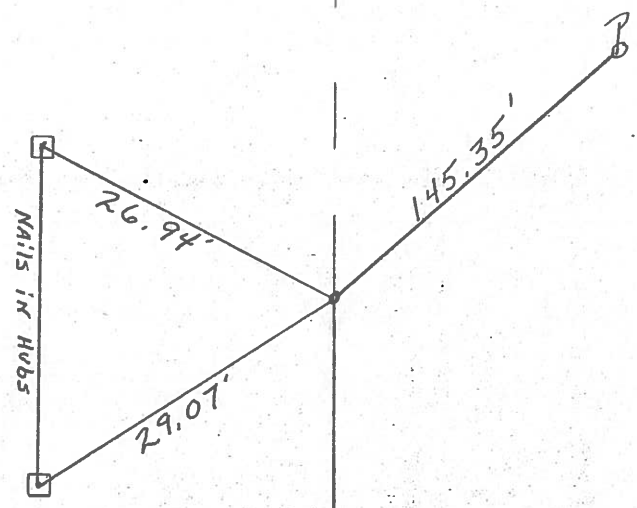
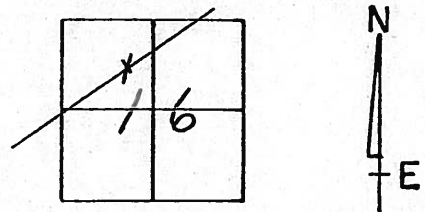
TEMP. 80°

TOWNSHIP ADAMS

SECTION 16

T.3 N R.16 E

TYPE MONUMENT SET P.K. & WASHER
ON SURFACE - BELOW P.K. NAIL ATOP R.R. SPIKE
LEFT - € PAV'T. - RIGHT 1' RT. & PAV'T.
TO EDGE PAVEMENT
S.L.M. _____



P.O.T. 97+00

Q R/W S.R. #1017

County Seneca S.R. # 101

Date 7-2-79

Township Adams

Weather Fair

Section 16

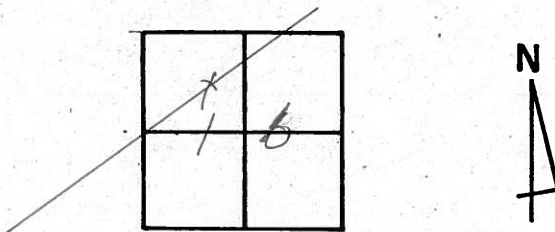
Temp. 65°

T 3 N, R 6 E

Personnel Schneider

Mosser

Barbour



47-B



⊥ S.R. # 101

P.O.T.

99+00

97+00?

R.R. spk. on ⊥ R/W

2" down 1' Rt. of ⊥

Reset P.K. Nail

Nails in Hubs

