

O.D.O.T. DISTRICT 2 SURVEY OFFICE (USE ONLY)

PERSONNEL

REFERENCE NO. 51

SHEET 29 OF 46

NOTES HOMAN

DATE 7-21-09

ROUTE SR 101

H.C. HOMAN

WEATHER SUNNY

COUNTY SENECA

R.C. ROUSOS

TEMP. 85°F

TOWNSHIP ADAMS

SECTION 9

DWG BY MAHLER

PID 100787

T 3 N R 16 E

TYPE MONUMENT SQ HEADED NAIL/WASHER

ON SURFACE - ~~BELOW~~ ON

OFFSET ☉ PAVEMENT 2.3' LT : ~~RT~~

- TO - EDGE PAVEMENT

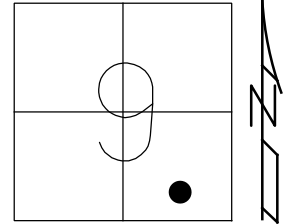
STATION: 625+83

HORZ.DATUM: NAD83 (2011)

GEOID: NAVD88-2012A

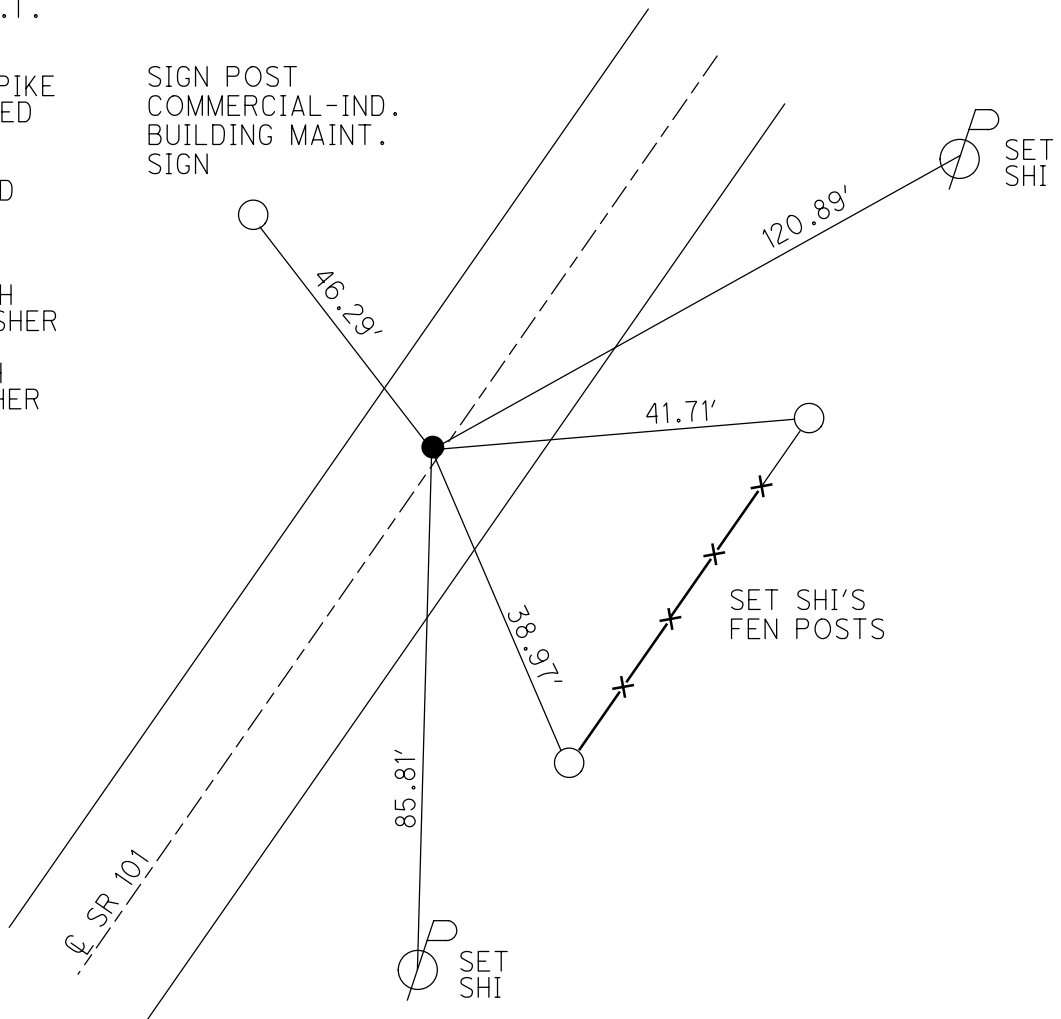
GRID: NORTHING: 569400.120

EASTING: 1824671.138



RECORD: P.O.T.
 STA. 116+00
 FD P.K. NAIL
 ATOP R.R. SPIKE
 SET SQ HEADED
 NAIL/SHINER
 8/28/90
 FD SQ.HEADED
 NAIL/WASHER
 2/7/05, SAH
 REF51
 7/28/09, DCH
 SET MAG/WASHER
 NEWREF51
 10-06-09, DH
 FD MAG/WASHER
 REF51
 6/14/16
 9/19/17, JFO

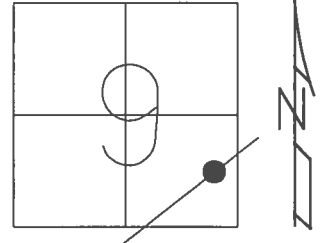
SIGN POST
 COMMERCIAL-IND.
 BUILDING MAINT.
 SIGN



O.D.O.T. DISTRICT 2 SURVEY OFFICE (USE ONLY)

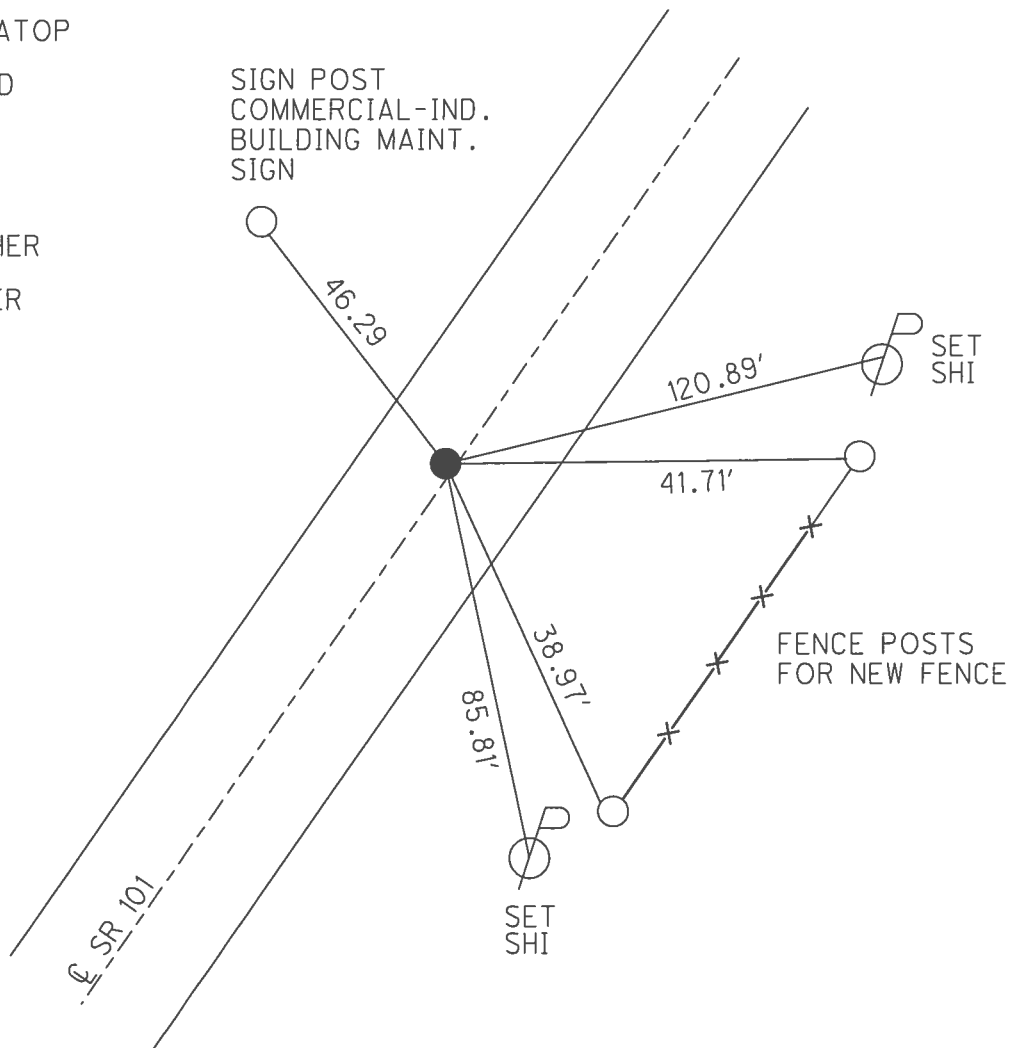
PERSONNEL _____ REFERENCE NO. 51 SHEET 29 OF 46
 NOTES HOMAN DATE 7/21/09 ROUTE SR 101
 H.C. HOMAN WEATHER SUNNY COUNTY SENECA
 R.C. ROUSOS TEMP. 85° TOWNSHIP ADAMS
 _____ SECTION 9
 _____ T 3 N R 16 E

TYPE MONUMENT SQ HEADED NAIL/WASHER
 ON SURFACE - ~~BELOW~~ ON
 LEFT - ☉ PAV'T - ~~RIGHT~~ 2.3'
 _____ TO _____ EDGE PAVEMENT
 S.L.M. 625+83



GRID: NORTHING: 569400.120 EASTING: 1824671.138

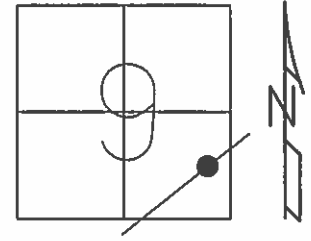
RECORD: P.O.T.
 STA. 116+00
 FD P.K. NAIL ATOP
 R.R. SPIKE
 SET SQ HEADED
 NAIL/SHINER
 8/28/90
 FD SQ HEADED
 NAIL/WASHER
 2/7/05, SAH
 SET MAG/WASHER
 10-06-09, DH
 FD MAG/WASHER
 REF51
 6/14/16, JFO
 UNCOVERED
 9/19/17, JFO



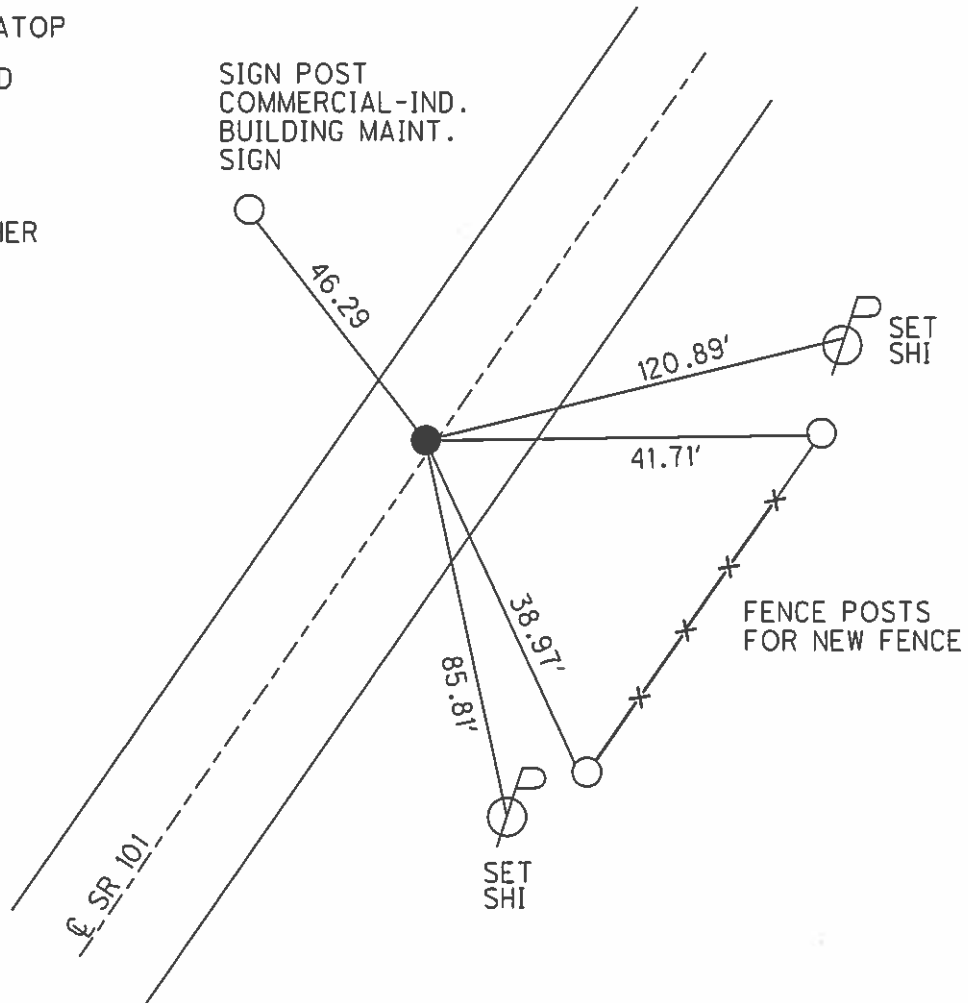
O.D.O.T. DISTRICT 2 SURVEY OFFICE (USE ONLY)

PERSONNEL	REFERENCE NO.	<u>51</u>	SHEET	<u>29</u>	OF	<u>46</u>
NOTES	HOMAN	DATE	<u>7/21/09</u>	ROUTE	<u>SR 101</u>	
H.C.	HOMAN	WEATHER	<u>SUNNY</u>	COUNTY	<u>SENECA</u>	
R.C.	ROUSOS	TEMP.	<u>85°</u>	TOWNSHIP	<u>ADAMS</u>	
				SECTION	<u>9</u>	
				T	<u>3</u>	R
					<u>N</u>	<u>16</u>
					<u>E</u>	

TYPE MONUMENT SO HEADED NAIL/WASHER
 ON SURFACE - ~~BELOW~~ ON
 LEFT - ℄ PAV'T - ~~RIGHT~~ 1'
- TO - EDGE PAVEMENT
 S.L.M. 625+83
 GRID: NORTHING: 569400.146 EASTING: 1824671.130



RECORD: P.O.T.
 STA. 116+00
 FD P.K. NAIL ATOP
 R.R. SPIKE
 SET SO HEADED
 NAIL/SHINER
 8/28/90
 FD SQ. HEADED
 NAIL/WASHER
 2/7/05, SAH
 SET MAG/WASHER
 10-06-09, DH



O.D.O.T. DISTRICT 2 SURVEY OFFICE

PERSONNEL

REFERENCE NO. 51

SHEET 26 OF 41

NOTES RIPPIE

H.C. BARBOUR

DATE 8/28/90

ROUTE S.R. #101

R.C. GEYMAN

WEATHER SUNNY

COUNTY SENECA

TEMP. 86°

TOWNSHIP ADAMS

SECTION 9

T3 N R 16 E

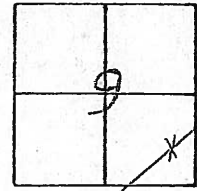
TYPE MONUMENT Set Square Headed Nail & shiner

ON SURFACE - BELOW PK. Nail A Top RR spike

LEFT - ☉ PAV'T. - RIGHT 1' LT. ☉ PAV'T.

___ TO ___ EDGE PAVEMENT

S.L.M. _____



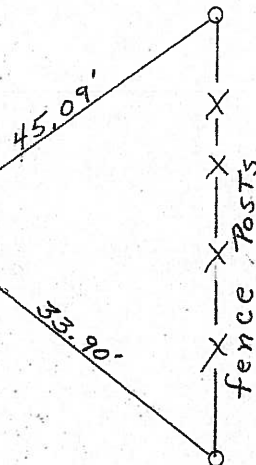
625 + 83



46.29'
CAMP SENECA
Sign lost

Commercial-Indo
Build. Maint
Sign

P.O.T. 116+00



Fol
2-7-05
SAH

O.D.O.T. DISTRICT 2 SURVEY OFFICE

PERSONNEL

REFERENCE NO. 51

SHEET 26 OF 41

NOTES RIPPLE

H.C. BARBOUR

DATE 8/28/90

ROUTE S.R. #101

R.C. GEYMAN

WEATHER SUNNY

COUNTY SENECA

TEMP. 86°

TOWNSHIP ADAMS

SECTION 9

T3 N R 16 E

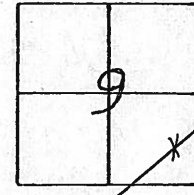
TYPE MONUMENT Set Square Headed Nail & shiner

ON SURFACE - BELOW P.K. Nail A Top R.R. spike

LEFT - ¢ PAV'T. - RIGHT 1' LT. ¢ PAV'T.

TO EDGE PAVEMENT

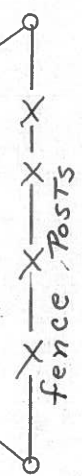
S.L.M. _____



46.29'
CAMP Seneca
Sign Post

45.09'

33.90'



P.O.T. 116+00

Q.D.O.T. DISTRICT 2 SURVEY OFFICE

Sht. ___ of ___

County Seneca S.R. # 101

Date 6-26-79

Township Adams

Weather Fair

Section 9

Temp. 75°

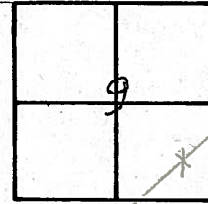
T₃N, R₁₆E

Personnel Schneider

Mosser

Barbour

(51)



~~#48~~



¢ S.R. # 101

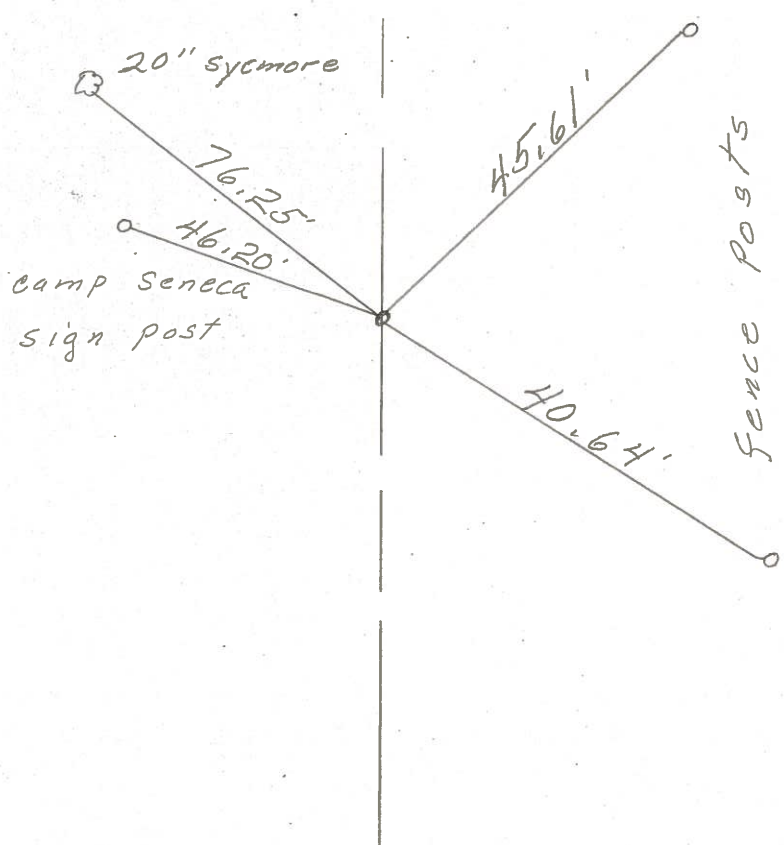
P.O.T.

116+00

R.R. spk. on ¢ R/W

1.3' Lt. of ¢

Reset P.K. Nail

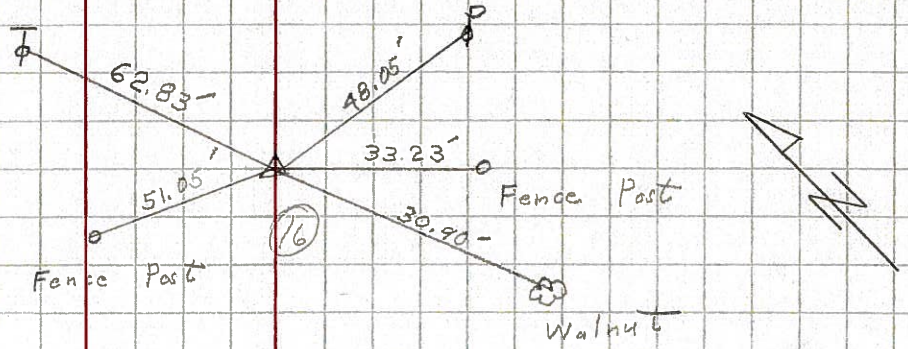


PERSONNEL	TITLE	PERSONNEL	TITLE	COUNTY	DATE
Krabill				Seneca	2-11-64
Kowaleski				S. R. # 101	WEATHER
Geyman				SEC.	TEMP.
Bruggeman					

DESCRIPTION S.R. # 101 Tiffin to Sen. Co. Line JOB NO.

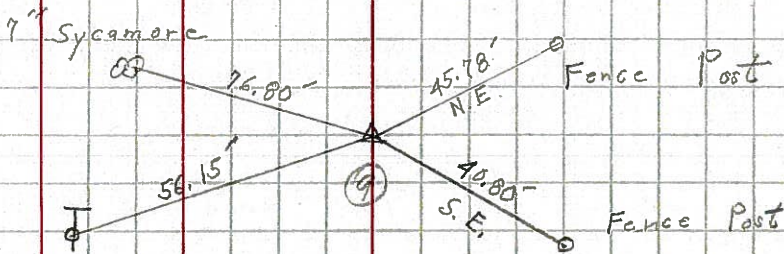
50

STA. 108+50
Hub
400



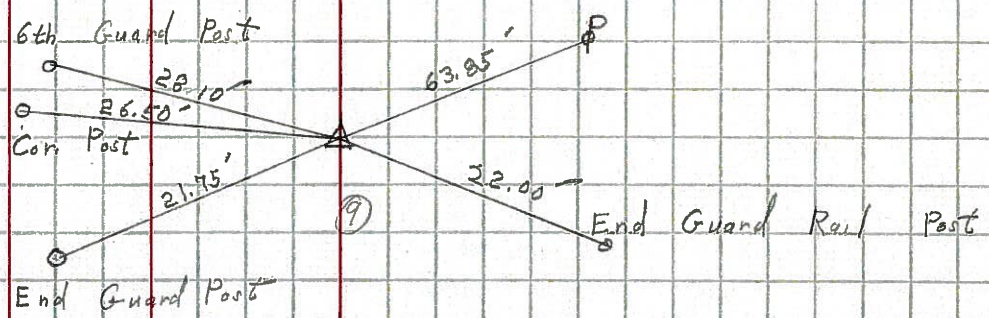
51

STA. 116+00
P.K.
401



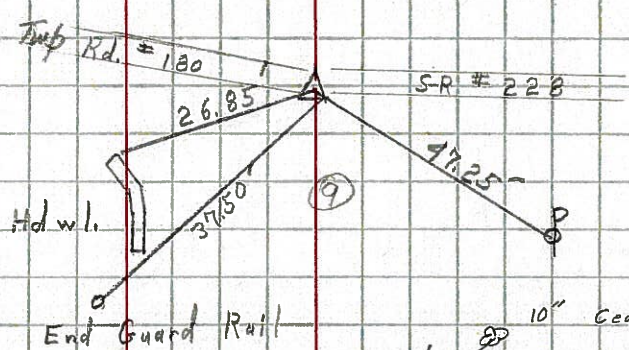
52

STA. 122+00
P.K.
402



53

STA. 127+00
P.K.
403



54

STA. 129+50
Iron Pin
404

