

O.D.O.T. DISTRICT 2 SURVEY OFFICE (USE ONLY)

PERSONNEL

REFERENCE NO. 53 A

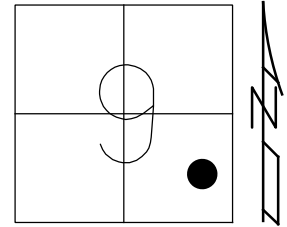
SHEET 32 OF 46

NOTES HOMAN DATE 6-29-09  
 H.C. ROUSOS WEATHER SUNNY  
 R.C. HOMAN TEMP. 80°F

ROUTE SR 101  
 COUNTY SENECA  
 TOWNSHIP ADAMS  
 SECTION 9  
 T 3 N R 16 E

DWG BY MAHLER PID 100787

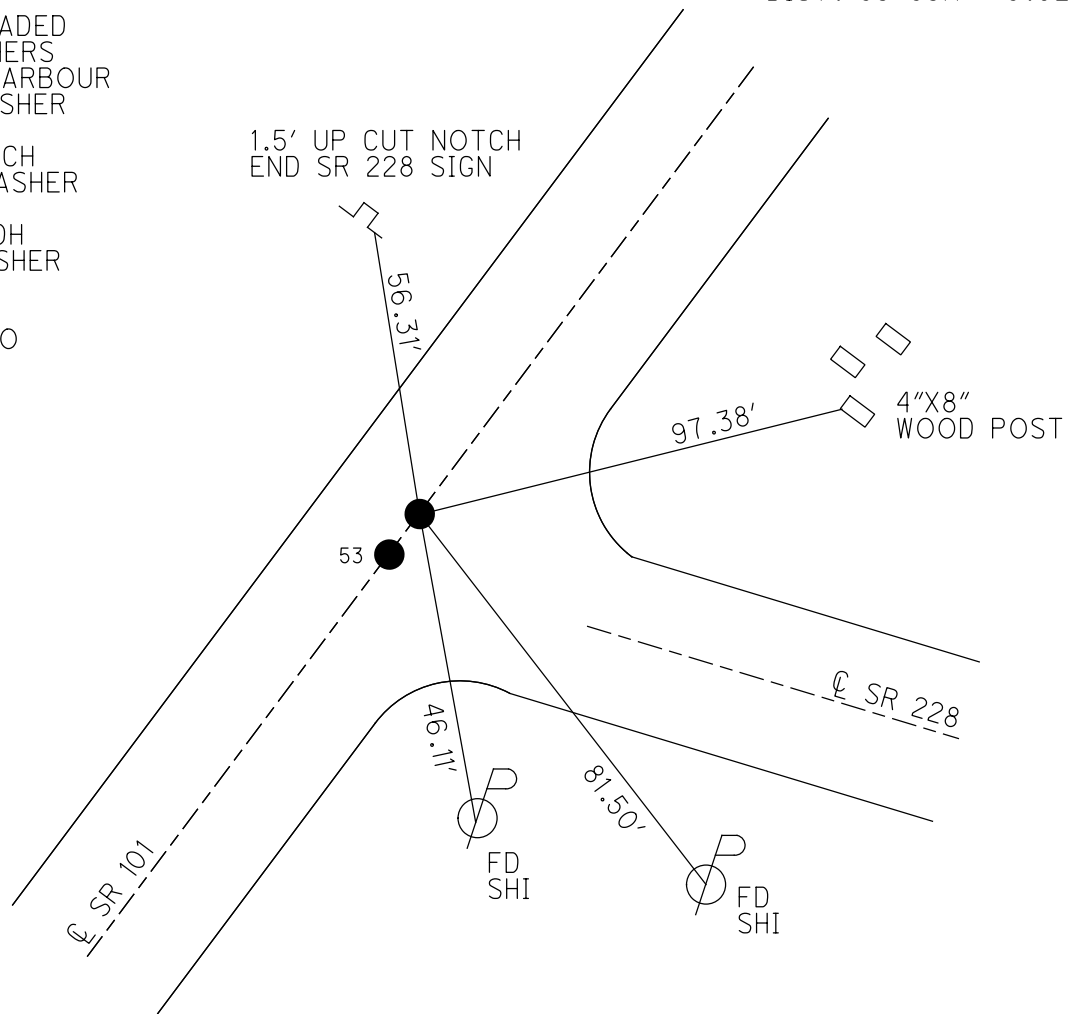
TYPE MONUMENT P.K./WASHER  
 ON SURFACE - ~~BELOW~~ ON  
 OFFSET  $\varnothing$  PAVEMENT ON LT : RT  
- TO - EDGE PAVEMENT  
 STATION: 636+92



HORZ. DATUM: NAD83 (2011) GEOID: NAVD88-2012A  
 GRID: NORTHING: 570105.958 EASTING: 1825511.141

RECORD:  
 SET SQ. HEADED  
 NAILS/WASHERS  
 8/28/90, BARBOUR  
 FD P.K./WASHER  
 REFA53  
 6/29/09, DCH  
 SET MAG/WASHER  
 NEWREFA53  
 10-06-09, DH  
 FD MAG/WASHER  
 REFA53  
 6/14/16  
 9/19/17, JFO

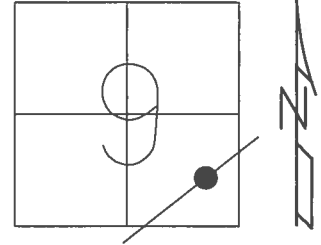
DIST. 53-53A = 5.02'



O.D.O.T. DISTRICT 2 SURVEY OFFICE (USE ONLY)

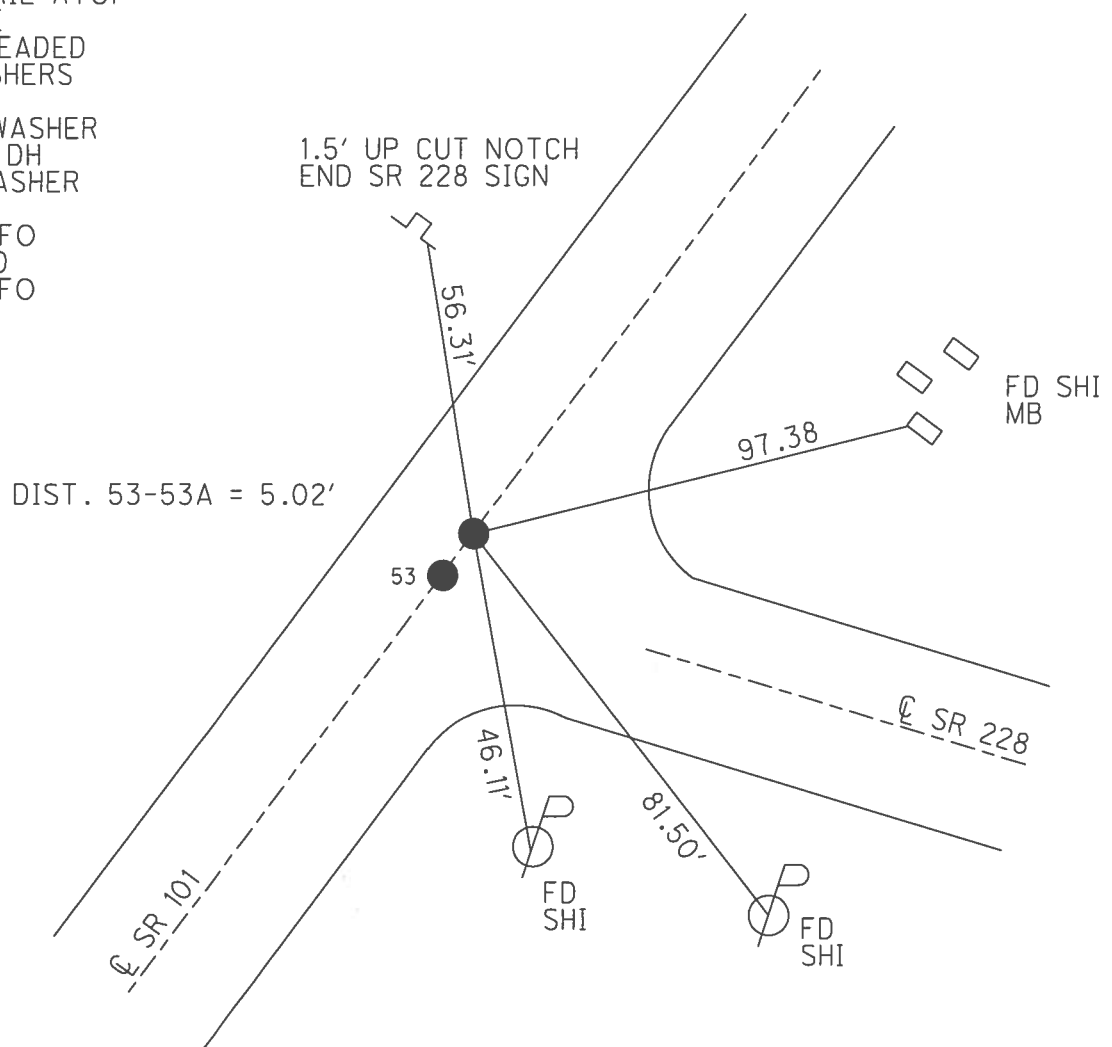
PERSONNEL \_\_\_\_\_ REFERENCE NO. 53 A SHEET 32 OF 46  
 NOTES HOMAN DATE 6/29/09 ROUTE SR 101  
 H.C. ROUSOS WEATHER SUNNY COUNTY SENECA  
 R.C. HOMAN TEMP. 80° TOWNSHIP ADAMS  
 \_\_\_\_\_ SECTION 9  
 \_\_\_\_\_ T 3 N R 16 E

TYPE MONUMENT SQ. HEADED NAIL/WASHER  
 ON SURFACE - ~~BELOW~~ ON  
~~LEFT~~ - CL PAV'T - RIGHT 1'  
- TO - EDGE PAVEMENT  
 S.L.M. 636+92



GRID: NORTHING: 570105.958 EASTING: 1825511.141

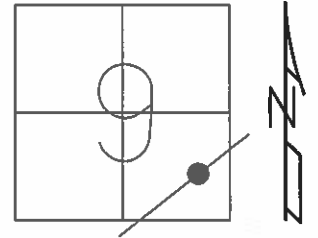
RECORD:  
 FD P.K. NAIL ATOP  
 R.R. SPIKE  
 SET SQ. HEADED  
 NAILS/WASHERS  
 8/28/90  
 SET MAG/WASHER  
 10-06-09, DH  
 FD MAG/WASHER  
 REFA53  
 6/14/16, JFO  
 UNCOVERED  
 9/19/17, JFO



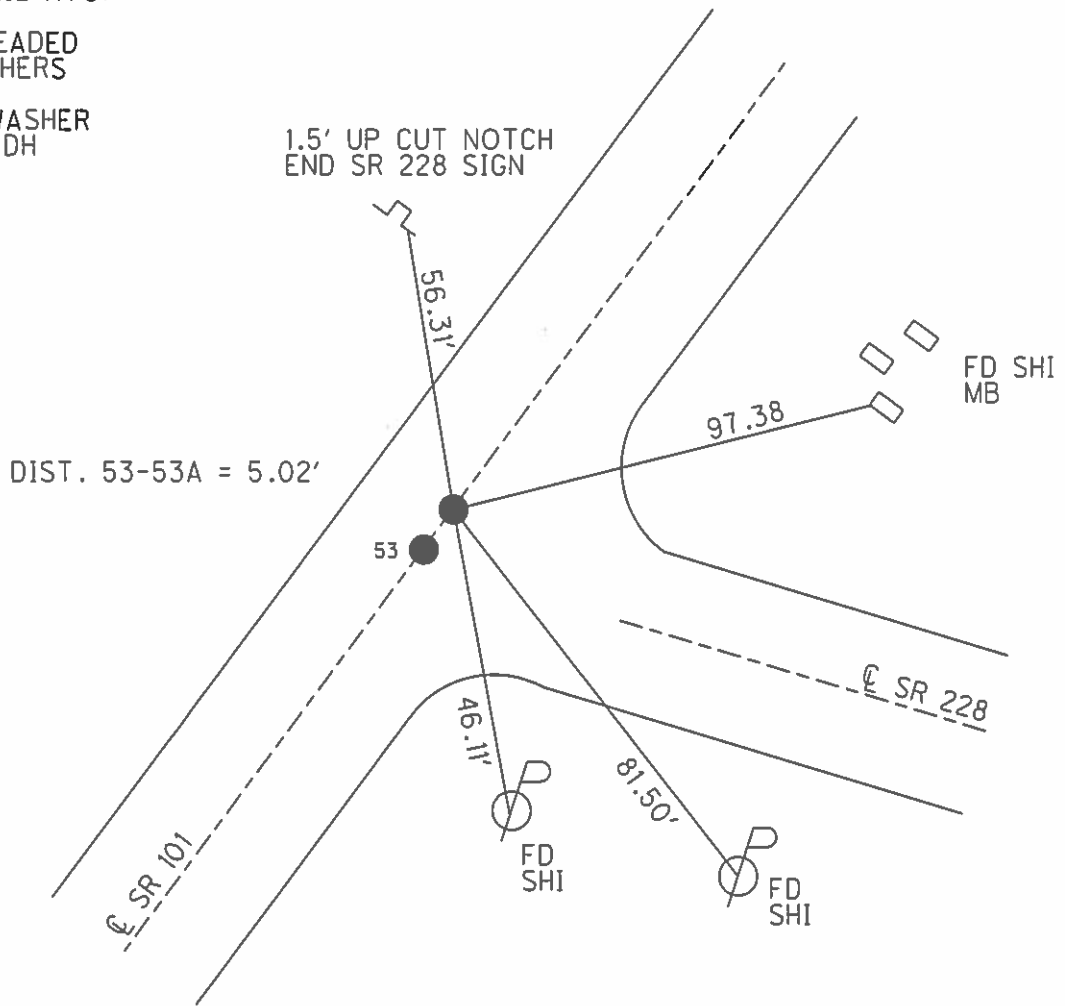
**O.D.O.T. DISTRICT 2 SURVEY OFFICE (USE ONLY)**

PERSONNEL	REFERENCE NO.	53 A	SHEET	32	OF	46
NOTES	HOMAN	DATE	6/29/09	ROUTE	SR 101	
H.C.	ROUSOS	WEATHER	SUNNY	COUNTY	SENECA	
R.C.	HOMAN	TEMP.	80°	TOWNSHIP	ADAMS	
				SECTION	9	
				T. 3 N	R. 16 E	

TYPE MONUMENT SQ. HEADED NAIL/WASHER  
 ON SURFACE - ~~BELOW~~ ON  
 LEFT - ☉ PAV'T - RIGHT ON  
- TO - EDGE PAVEMENT  
 S.L.M. 636+92  
 GRID: NORTHING: 570106.088 EASTING: 1825511.041



RECORD:  
 FD P.K. NAIL ATOP  
 R.R. SPIKE  
 SET SQ. HEADED  
 NAILS/WASHERS  
 8/28/90  
 SET MAG/WASHER  
 10-06-09, DH



# O.D.O.T. DISTRICT 2 SURVEY OFFICE

PERSONNEL \_\_\_\_\_

REFERENCE NO. 53

SHEET 28 OF 41

NOTES Ripple

H.C. BARBOUR

DATE 8/28/90

ROUTE SR#101

R.C. Geyman

WEATHER SUNNY

COUNTY Seneca

TEMP. 86°

TOWNSHIP ADAMS

SECTION 9

T3 N R 16 E

TYPE MONUMENT Set Square Handed Nails & washers

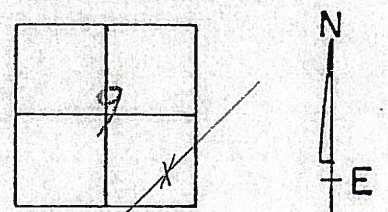
ON SURFACE - BELOW P.K. Nail a Top RR Spike

LEFT - ☉ Pav't. - RIGHT ☉ Pav't.

TO EDGE PAVEMENT

S.L.M. \_\_\_\_\_

53-A



B 636+~~82~~92

A 636+82



36" Cottonwood

41.78'

B

SR# 228

Cor. of Hdw.

33.69'

35.70'

26.93'

A

49.74'

58.34'

36.78'

END G.R. Post

To Dangerous

☉ R/W SR# 101

# O.D.O.T. DISTRICT 2 SURVEY OFFICE

PERSONNEL

REFERENCE NO. 53

SHEET 28 OF 41

NOTES RIPPLE

H.C. BARBOUR

DATE 8/28/90

ROUTE SR#101

R.C. GEYMAN

WEATHER SUNNY

COUNTY SENECA

TEMP. 86°

TOWNSHIP ADAMS

SECTION 9

T. 3 N R. 16 E

TYPE MONUMENT Set square headed nails & washers

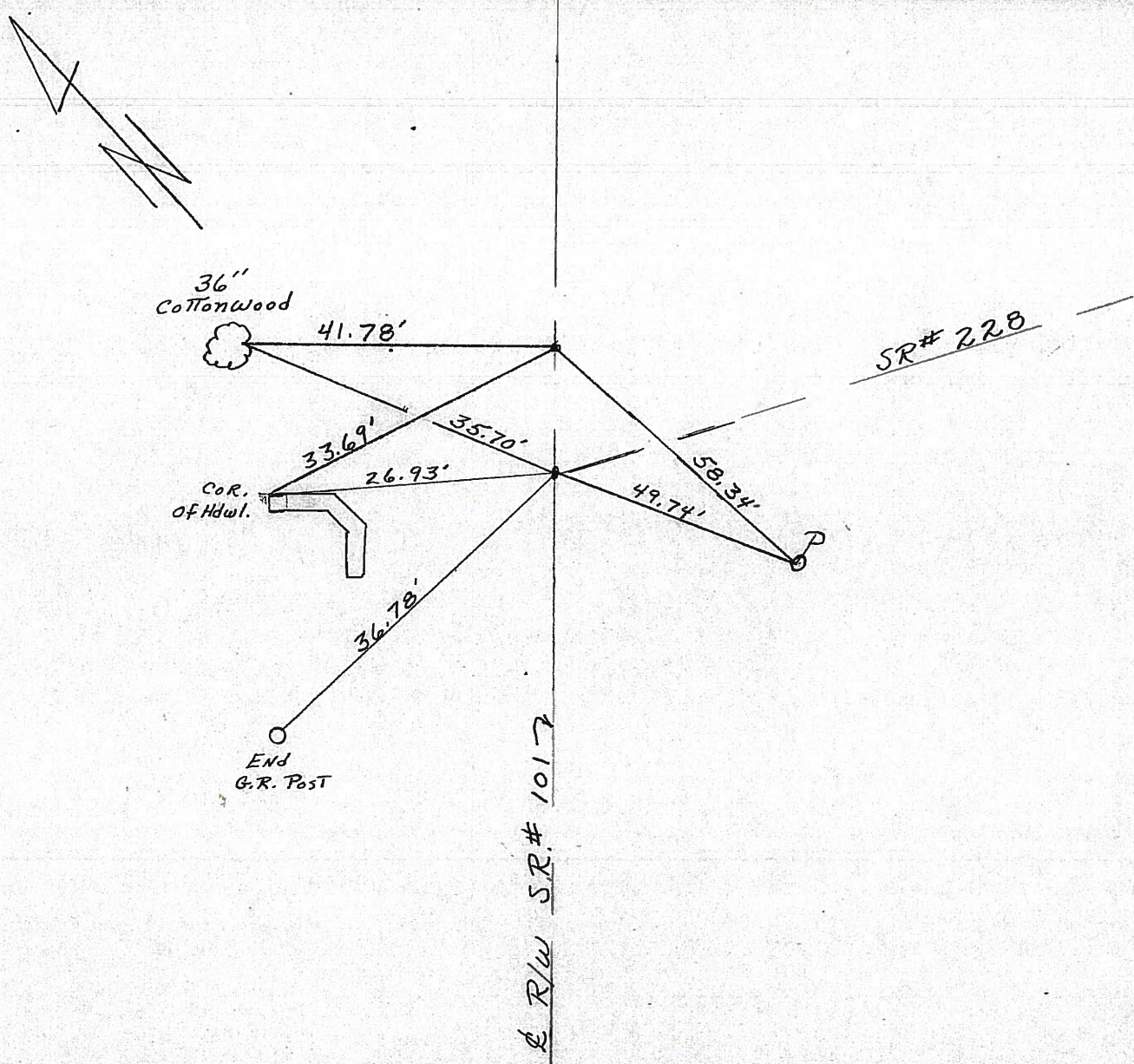
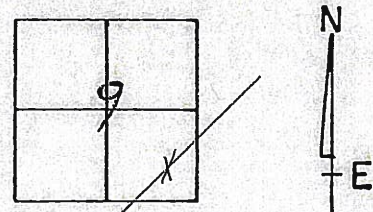
ON SURFACE - BELOW P.K. nail & Top RR spike

LEFT - ¢ PAV'T. - RIGHT ¢ PAV'T.

TO EDGE PAVEMENT

S.L.M. \_\_\_\_\_

53-A



County Seneca S.R. # 101

Date 6-26-79

Township Adams

Weather Fair

Section 9

Temp. 75°

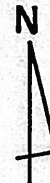
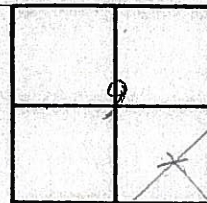
T<sub>3</sub>N, R<sub>16</sub>E

Personnel Schneider

Mosser

Barbour

53-A



~~#48-B~~

127+00

R.R. spk. on  $\frac{1}{2}$  R/W

Reset 2 P.K. Nails

Cor. of Hdwl.

End G.R. Post

36" Cottonwood

$\frac{1}{2}$  S.R. #101

Fb. P.K.

S.R. # 228

41.78'

33.66'

35.70'

26.92'

36.70'

10.27'

5.05'

56.16'

47.39'

Fb. P.K. Nail

