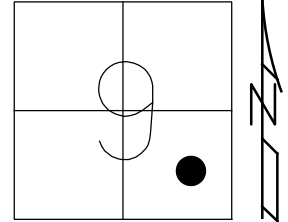


O.D.O.T. DISTRICT 2 SURVEY OFFICE (USE ONLY)

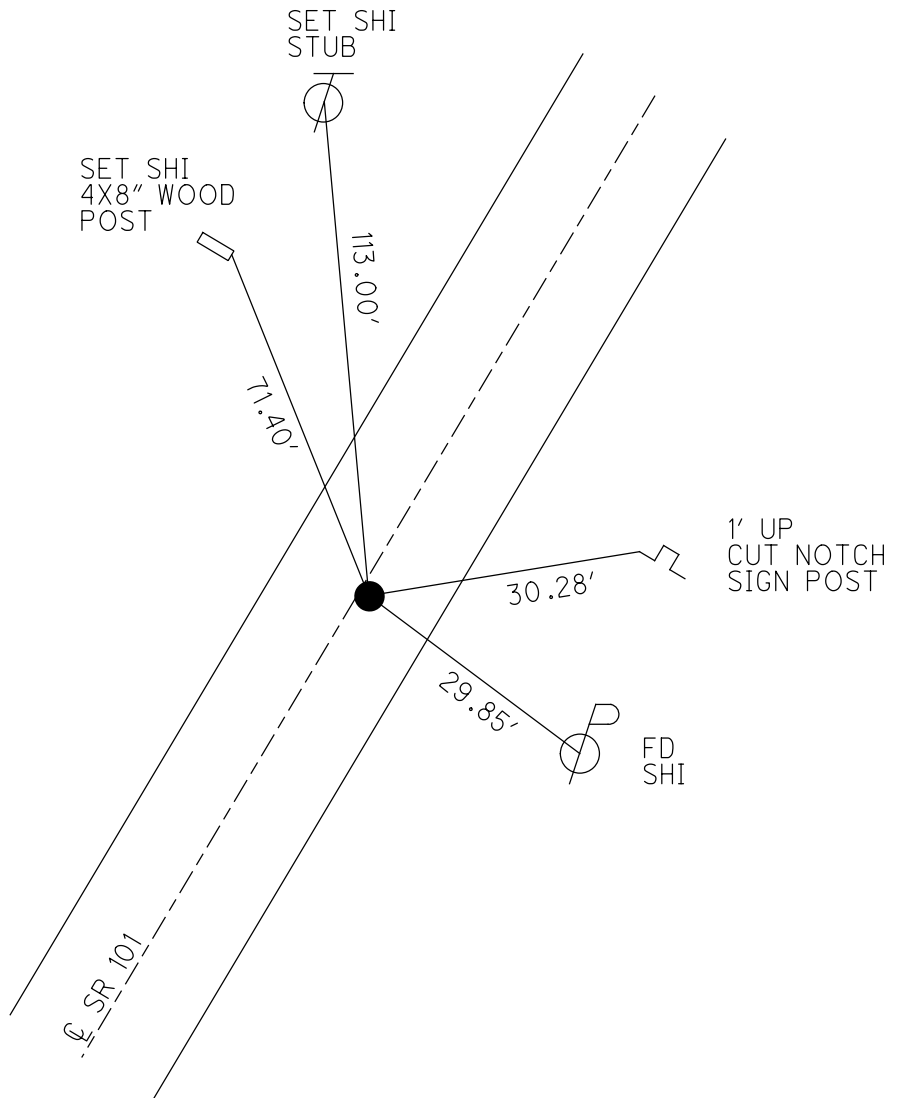
PERSONNEL _____ REFERENCE NO. 54 SHEET 33 OF 46
 NOTES HOMAN DATE 7-8-09 ROUTE SR 101
 H.C. HOMAN WEATHER SUNNY COUNTY SENECA
 R.C. ROUSOS TEMP. 80°F TOWNSHIP ADAMS
 DWG BY MAHLER PID 100787 SECTION 9
 T 3 N R 16 E

TYPE MONUMENT P.K.NAIL
 ON SURFACE - ~~BELOW~~ ON
 OFFSET C PAVEMENT 1' ~~LT~~ : RT
- TO - EDGE PAVEMENT
 STATION: 639+35

HORIZ.DATUM: NAD83 (2011) GEOID: NAVD88-2012A
 GRID: NORTHING: 570269.846 EASTING: 1825701.753



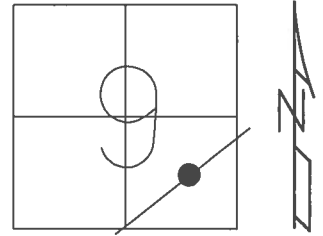
RECORD:
 STA. 129+50
 FD R.R.SPIKE
 4" DOWN
 SET SQ. HEADED
 NAIL/WASHER
 8/28/90, BARBOUR
 FD SQ. HEADED
 NAIL/WASHER
 2/7/05, SAH
 FD P.K.NAIL
 REF54
 7/8/09, DCH
 SET MAG/WASHER
 NEWREF54
 10-06-09, DH
 FD MAG/WASHER
 REF54
 6/15/16
 9/19/17, JFO



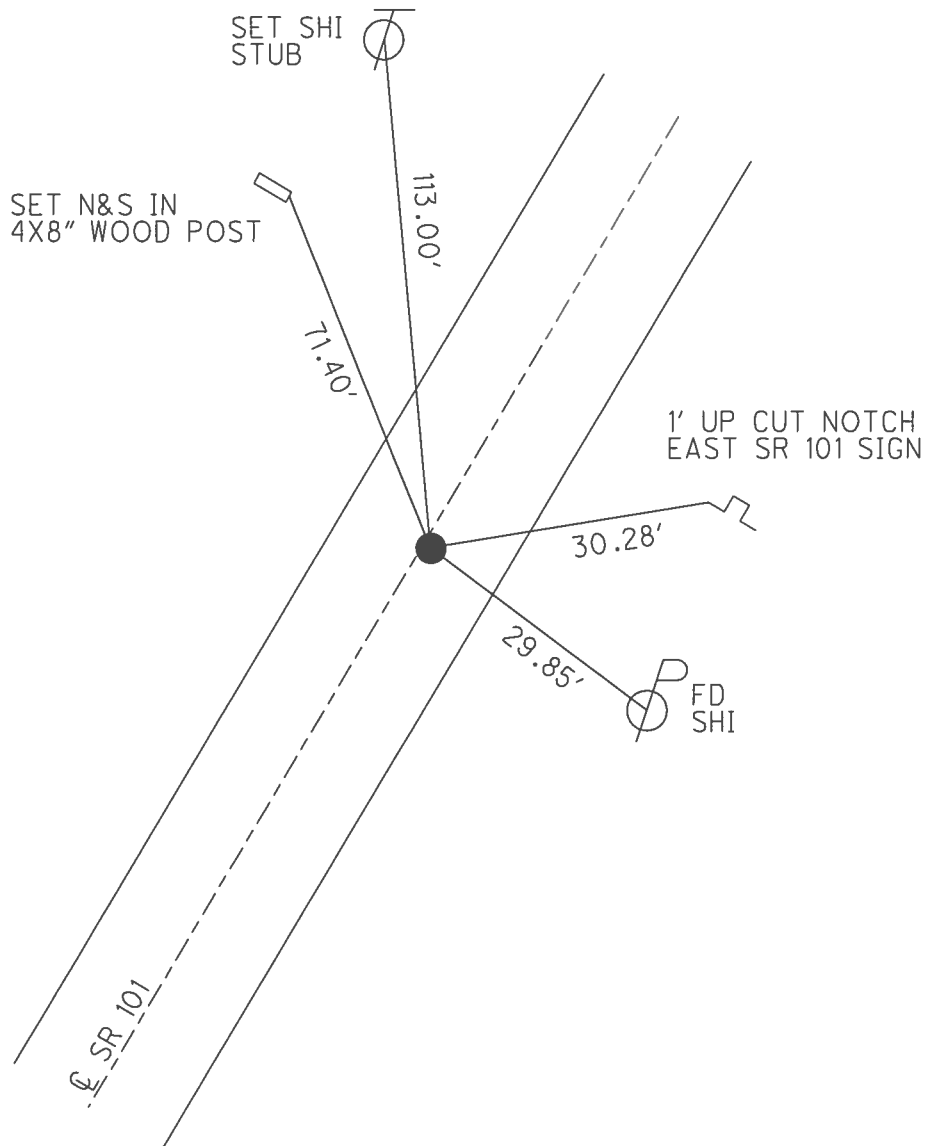
O.D.O.T. DISTRICT 2 SURVEY OFFICE (USE ONLY)

PERSONNEL	REFERENCE NO.	54	SHEET	33	OF	46
NOTES	HOMAN	DATE	7/8/09	ROUTE	SR 101	
H.C.	HOMAN	WEATHER	SUNNY	COUNTY	SENECA	
R.C.	ROUSOS	TEMP.	80°	TOWNSHIP	ADAMS	
				SECTION	9	
				T	3	N
				R	16	E

TYPE MONUMENT P.K.NAIL
 ON SURFACE - ~~BELOW~~ ON
~~LEFT~~ - Q PAV'T - RIGHT 2'
- TO - EDGE PAVEMENT
 S.L.M. 639+35
 GRID: NORTHING: 570269.846 EASTING: 1825701.753



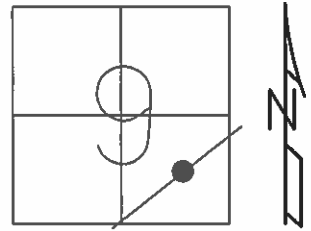
RECORD:
 STA. 129+50
 FD R.R.SPIKE
 4" DOWN
 SET SQ. HEADED
 NAIL/WASHER
 8/28/90
 FD SQ. HEADED
 NAIL/WASHER
 2/7/05, SAH
 SET MAG/WASHER
 10-06-09, DH
 FD MAG/WASHER
 REF54
 6/15/16, JFO
 UNCOVERED
 9/19/17, JFO



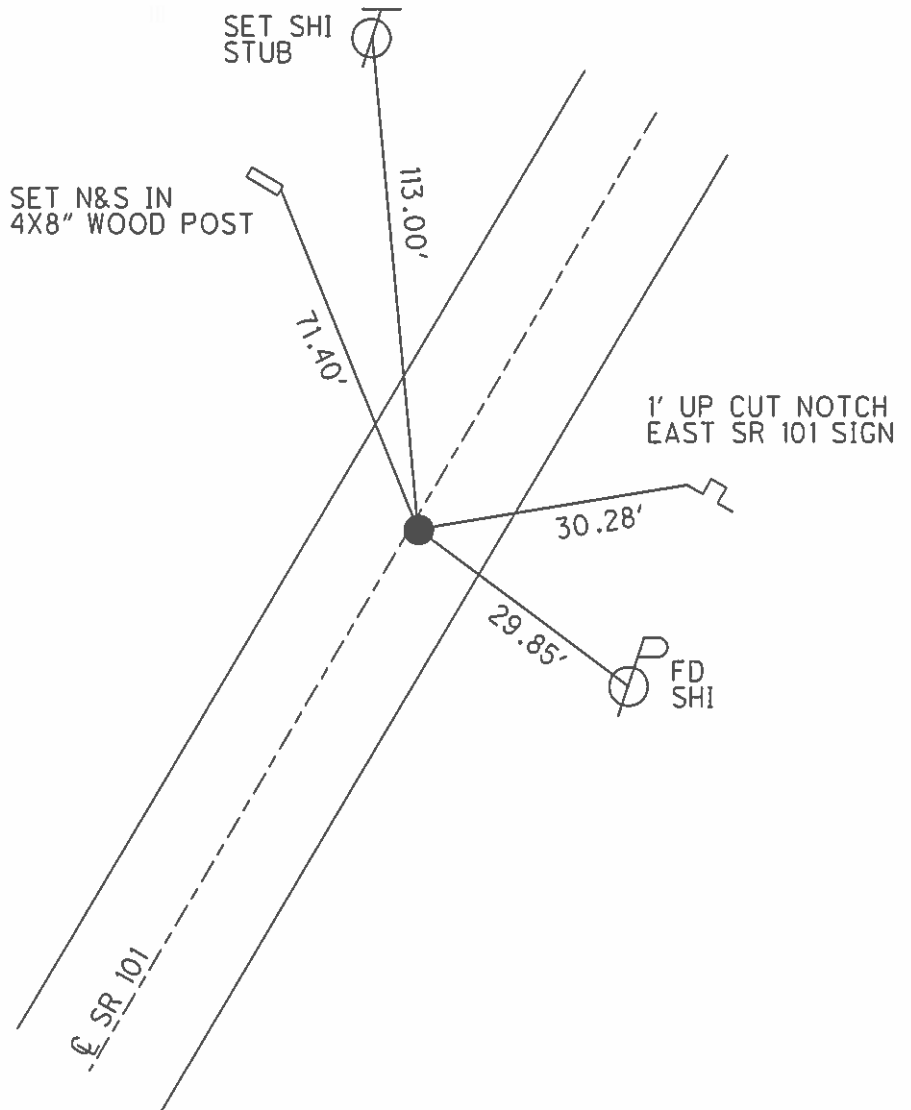
O.D.O.T. DISTRICT 2 SURVEY OFFICE (USE ONLY)

PERSONNEL _____ REFERENCE NO. 54 SHEET 33 OF 46
 NOTES HOMAN DATE 7/8/09 ROUTE SR 101
 H.C. HOMAN WEATHER SUNNY COUNTY SENECA
 R.C. ROUSOS TEMP. 80° TOWNSHIP ADAMS
 _____ SECTION 9
 _____ T 3 N R 16 E

TYPE MONUMENT P.K.NAIL
 ON SURFACE - ~~BELOW~~ ON
~~LEFT~~ - ℄ PAV'T - RIGHT 1'
- TO - EDGE PAVEMENT
 S.L.M. 639+35
 GRID: NORTHING: 570269.872 EASTING: 1825701.632



RECORD:
 STA. 129+50
 FD R.R.SPIKE
 4" DOWN
 SET SQ. HEADED
 NAIL/WASHER
 8/28/90
 FD SQ. HEADED
 NAIL/WASHER
 2/7/05, SAH
 SET MAG/WASHER
 10-06-09, DH



O.D.O.T. DISTRICT 2 SURVEY OFFICE

PERSONNEL

REFERENCE NO. 54

SHEET 29 OF 41

NOTES Ripple

H.C. BARHOUR

DATE 8-28-90

ROUTE 101

R.C. Glyman

WEATHER SUNNY

COUNTY Seu

TEMP. 88°

TOWNSHIP AAAMS

SECTION 9

T.3 N R.16 E

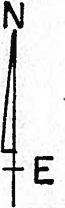
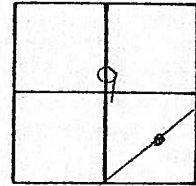
TYPE MONUMENT Sp. headed Nail + WASHER

ON SURFACE - BELOW R/R spike 4" down

LEFT - ☉ PAV'T. - RIGHT 1' RT. ☉

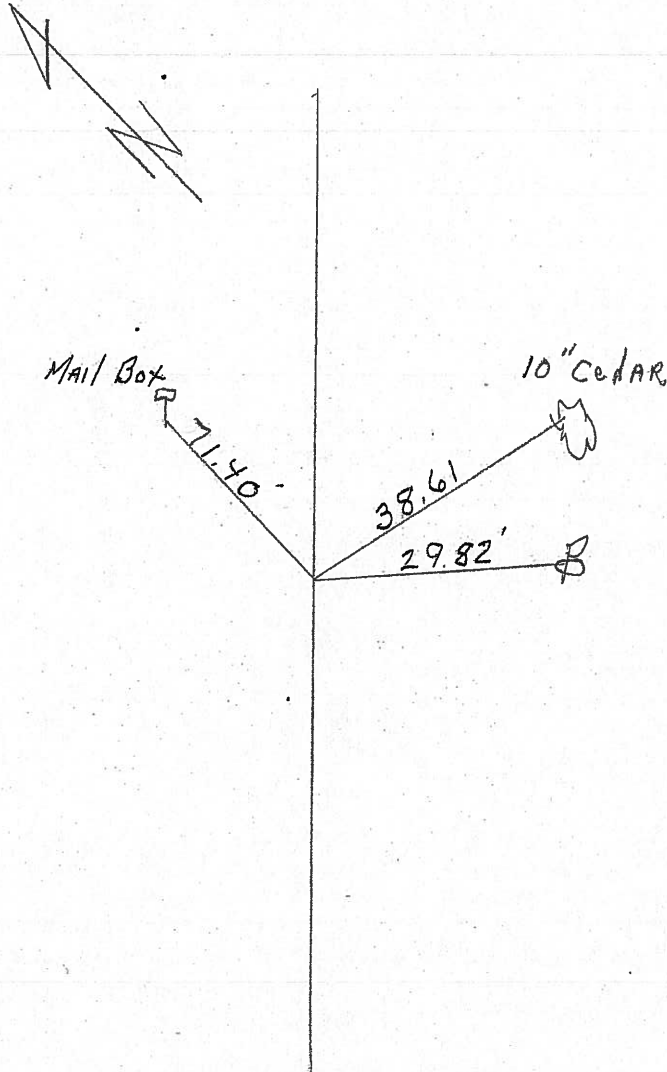
TO EDGE PAVEMENT

S.L.M. _____



639+35

STA. 129+50



FD
2-2-05
SAH

O.D.O.T. DISTRICT 2 SURVEY OFFICE

PERSONNEL

REFERENCE NO. 54

SHEET 29 OF 41

NOTES Ripple

H.C. BARBOUR

R.C. GLYMAN

DATE 8-28-90

WEATHER SUNNY

TEMP. 88°

ROUTE 101

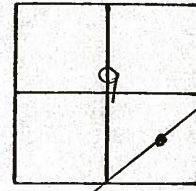
COUNTY Sen

TOWNSHIP AAAS

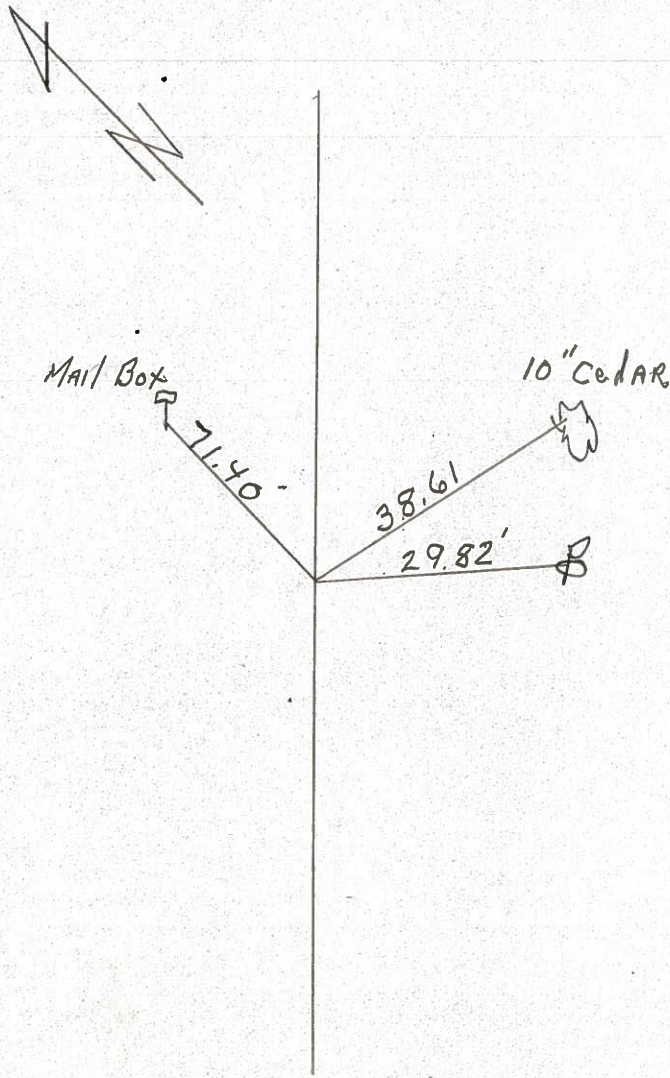
SECTION 9

T.3 N. R. 16 E

TYPE MONUMENT Sq. headed Nail + Washer
ON SURFACE - BELOW R/R spike 4" down
LEFT - ¢ PAV'T. - RIGHT 1' RT. ¢
TO EDGE PAVEMENT
S.L.M. _____



STA. 129+50



PERSONNEL TITLE PERSONNEL TITLE

COUNTY Seneca DATE 2-11-64

Krebill
Kowaleski
Geyman
Bruggeman

S. R. # 101 WEATHER
SEC. TEMP.

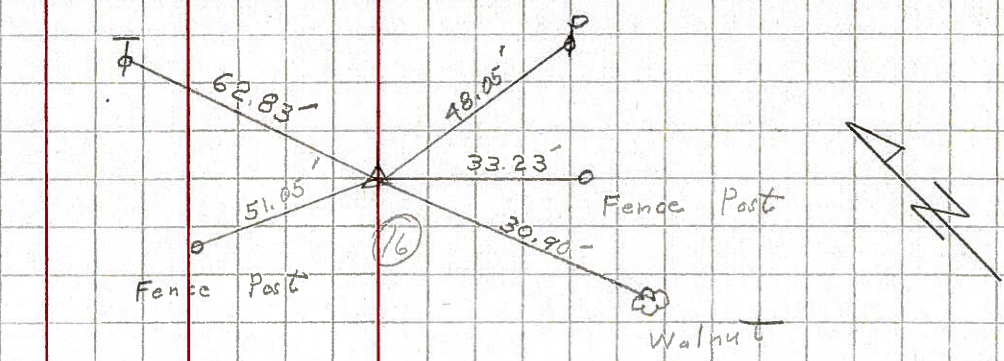
DESCRIPTION S.R. # 101 Tiffin to Sen. Co. Line

JOB NO.

LEFT CENTER LINE RIGHT

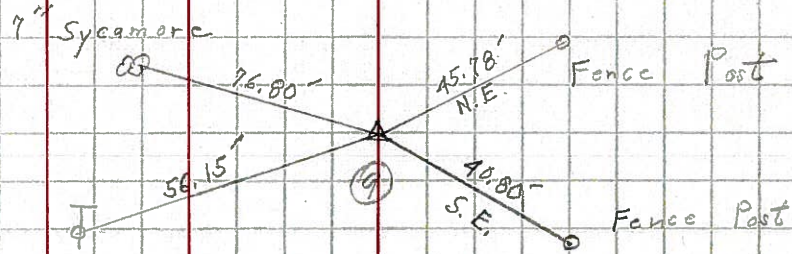
50

STA. 108+50
Hub
400



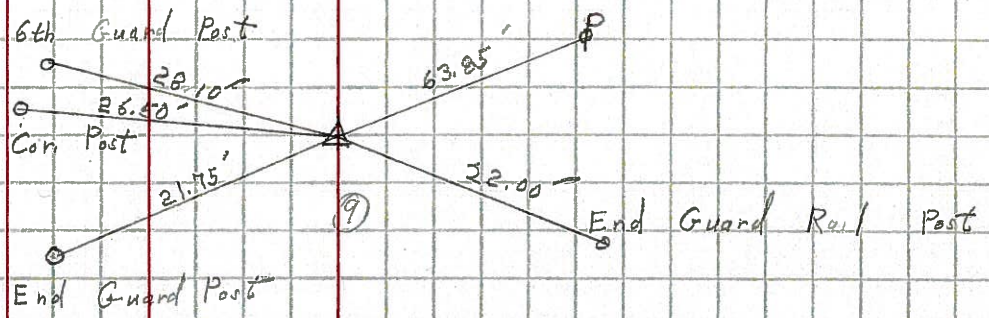
51

STA. 116+00
P.K.
401



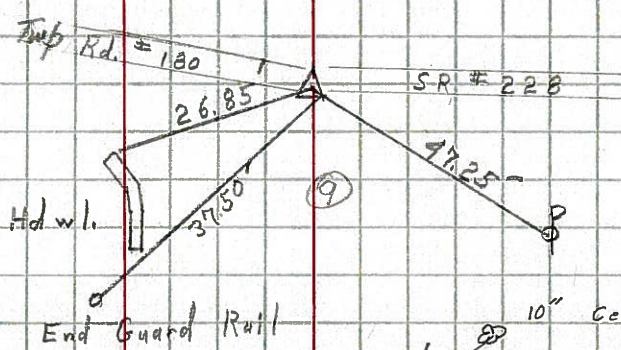
52

STA. 122+00
P.K.
402



53

STA. 127+00
P.K.
403



54

STA. 129+50
Iron Pin
404

