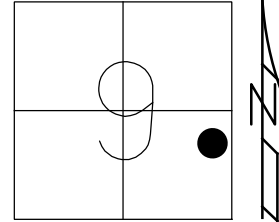


O.D.O.T. DISTRICT 2 SURVEY OFFICE (USE ONLY)

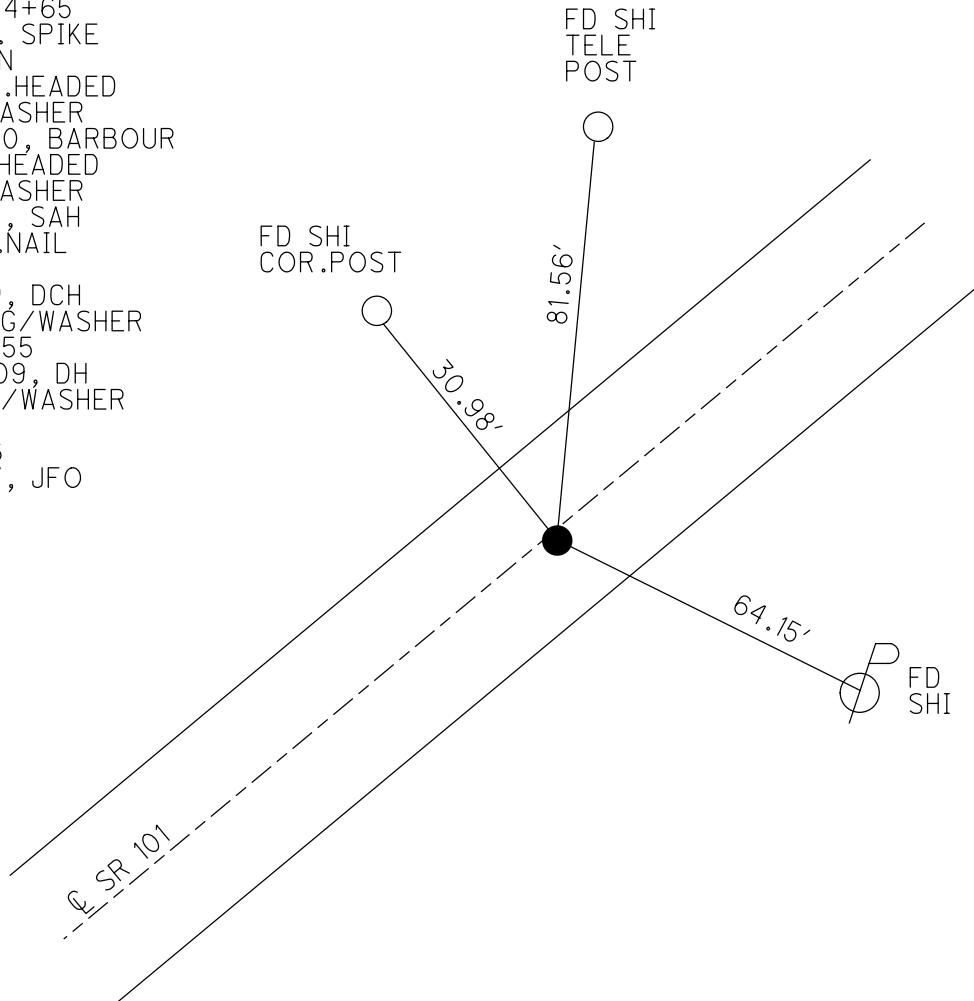
PERSONNEL _____ REFERENCE NO. 55 SHEET 34 OF 46
 NOTES HOMAN DATE 7-8-09 ROUTE SR 101
 H.C. HOMAN WEATHER SUNNY COUNTY SENECA
 R.C. ROUSOS TEMP. 80°F TOWNSHIP ADAMS
 DWG BY MAHLER PID 100787 SECTION 9
 T 3 N R 16 E

TYPE MONUMENT P.K.NAIL
 ON SURFACE - ~~BELOW~~ ON
 OFFSET C PAVEMENT 1' ~~LT~~ : RT
- TO - EDGE PAVEMENT
 STATION: 644+52



HORZ.DATUM: NAD83 (2011) GEOID: NAVD88-2012A
 GRID: NORTHING: 570604.009 EASTING: 1826093.928

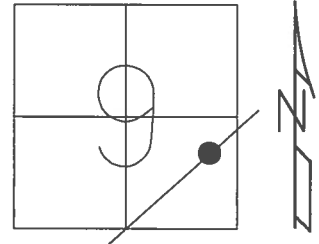
RECORD:
 STA. 134+65
 FD R.R. SPIKE
 4" DOWN
 SET SQ.HEADED
 NAIL/WASHER
 8/28/90, BARBOUR
 FD SQ.HEADED
 NAIL/WASHER
 2/7/05, SAH
 FD P.K.NAIL
 REF55
 7/8/09, DCH
 SET MAG/WASHER
 NEWREF55
 10-06-09, DH
 FD MAG/WASHER
 REF55
 6/15/16
 9/19/17, JFO



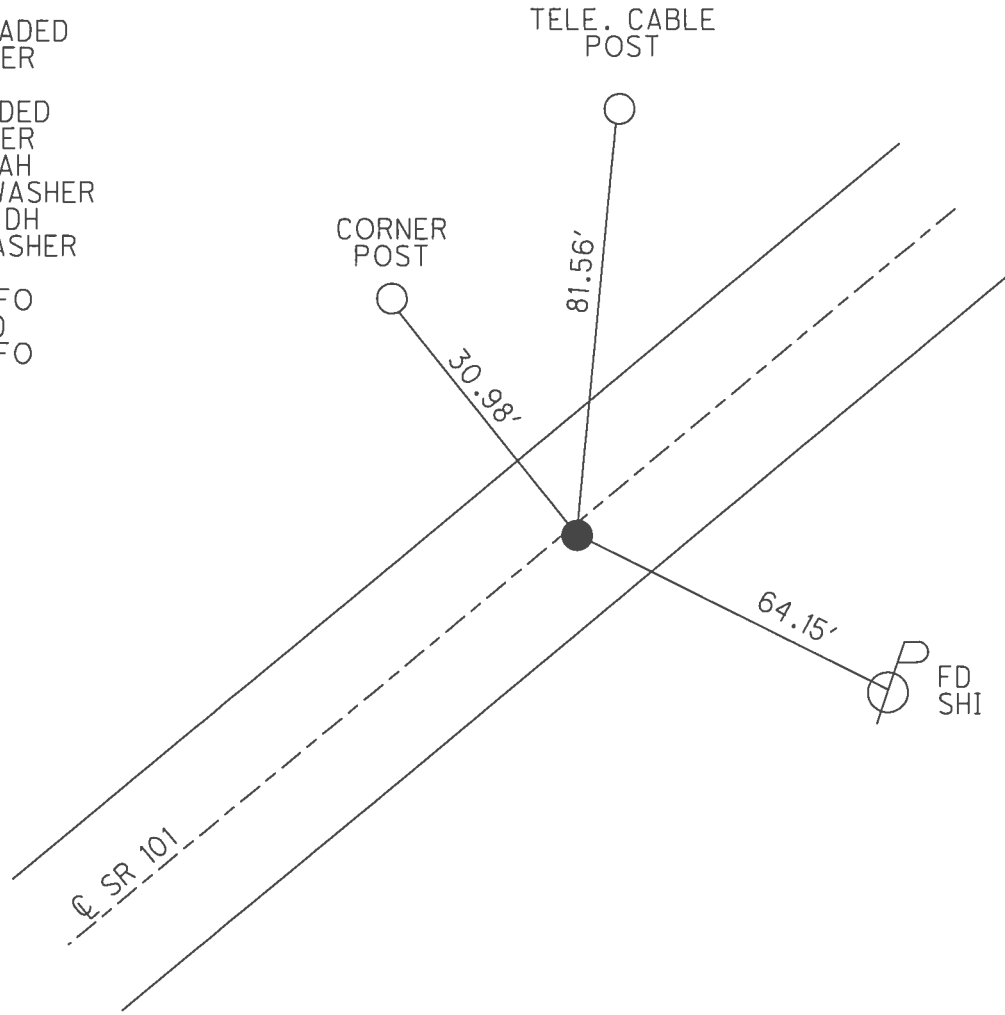
O.D.O.T. DISTRICT 2 SURVEY OFFICE (USE ONLY)

PERSONNEL _____ REFERENCE NO. 55 SHEET 34 OF 46
 NOTES HOMAN DATE 7/08/09 ROUTE SR 101
 H.C. HOMAN WEATHER SUNNY COUNTY SENECA
 R.C. ROUSOS TEMP. 80° TOWNSHIP ADAMS
 _____ SECTION 9
 _____ T 3 N R 16 E

TYPE MONUMENT P.K.NAIL
 ON SURFACE - ~~BELOW~~ ON _____
~~LEFT~~ - ℄ PAV'T - RIGHT 1'
 _____ TO _____ EDGE PAVEMENT
 S.L.M. 644+52
 GRID: NORTHING: 570604.009 EASTING: 1826093.928



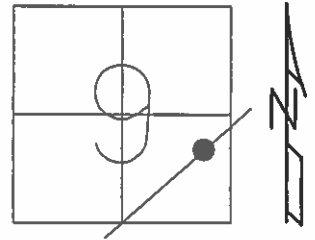
RECORD:
 STA. 134+65
 FD R.R. SPIKE
 4" DOWN
 SET SQ.HEADED
 NAIL/WASHER
 8/28/90
 FD SQ.HEADED
 NAIL/WASHER
 2/7/05, SAH
 SET MAG/WASHER
 10-06-09, DH
 FD MAG/WASHER
 REF55
 6/15/16, JFO
 UNCOVERED
 9/19/17, JFO



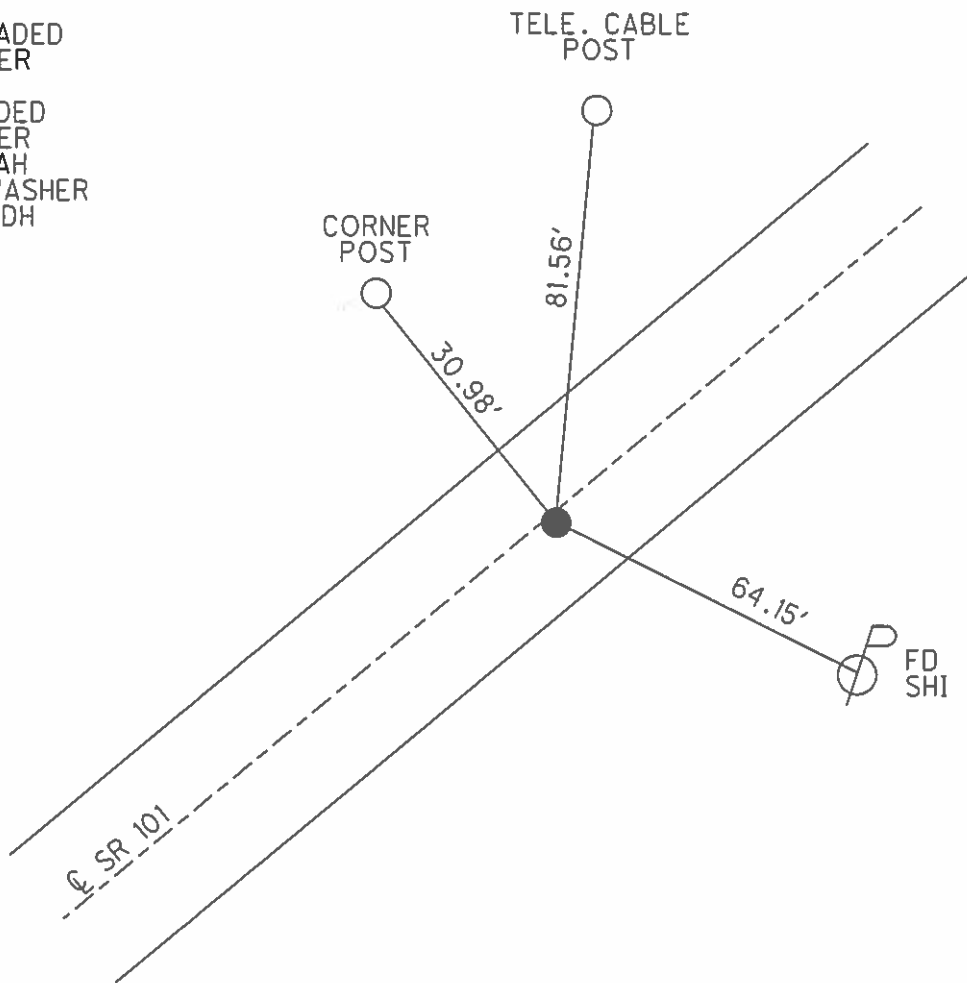
O.D.O.T. DISTRICT 2 SURVEY OFFICE (USE ONLY)

PERSONNEL _____ REFERENCE NO. 55 SHEET 34 OF 46
 NOTES HOMAN DATE 7/08/09 ROUTE SR 101
 H.C. HOMAN WEATHER SUNNY COUNTY SENECA
 R.C. ROUSOS TEMP. 80° TOWNSHIP ADAMS
 SECTION 9
 T 3 N R 16 E

TYPE MONUMENT P.K.NAIL
 ON SURFACE - ~~BELOW~~ ON _____
~~LEFT~~ - ☉ PAV'T - RIGHT 1'
 - TO - EDGE PAVEMENT
 S.L.M. 644+52
 GRID: NORTHING: 570604.009 EASTING: 1826093.845



RECORD:
 STA. 134+65
 FD R.R. SPIKE
 4" DOWN
 SET SQ.HEADED
 NAIL/WASHER
 8/28/90
 FD SQ.HEADED
 NAIL/WASHER
 2/7/05, SAH
 SET MAG/WASHER
 10-06-09, DH



O.D.O.T. DISTRICT 2 SURVEY OFFICE

PERSONNEL

REFERENCE NO. 55

SHEET 30 OF 41

NOTES Ripple

H.C. BARKOUR

R.C. SEYMAN

DATE 8-28-90

WEATHER SUNNY

TEMP. 88°

ROUTE 101

COUNTY Sen

TOWNSHIP Adams

SECTION 9

T 3 N R 16 E

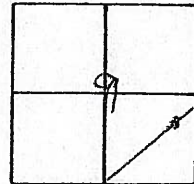
TYPE MONUMENT Sq. Headed Nail + Washer

ON SURFACE - BELOW R/R spike 4" down

LEFT - ☉ PAV'T. - RIGHT ☉ RT. ☉

TO EDGE PAVEMENT

S.L.M. _____



644+50

STA. 134+65

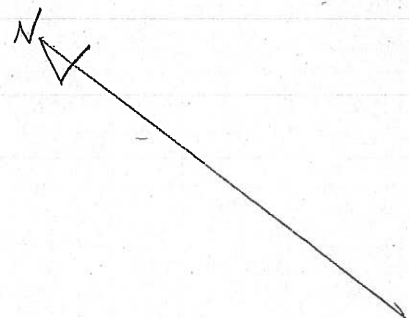
Tele. Cable Post

81.59

Cor. Post

30.92

64.13'



FJ

2-7-05

SAH

O.D.O.T. DISTRICT 2 SURVEY OFFICE

PERSONNEL _____

REFERENCE NO. 55

SHEET 30 OF 41

NOTES Ripple

H.C. BARBOUR

R.C. SEYMAN

DATE 8-28-90

WEATHER SUNNY

TEMP. 88°

ROUTE 101

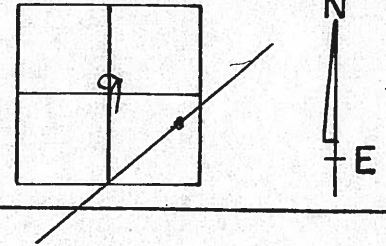
COUNTY Sen

TOWNSHIP ADAMS

SECTION 9

T 3 N R 16 E

TYPE MONUMENT Sq. Headed Nail + Washer
 ON SURFACE - BELOW R/R spike 4" down
 LEFT - € PAV'T. - RIGHT 1" RT. €
 TO EDGE PAVEMENT
 S.L.M. _____



STA. 134+65

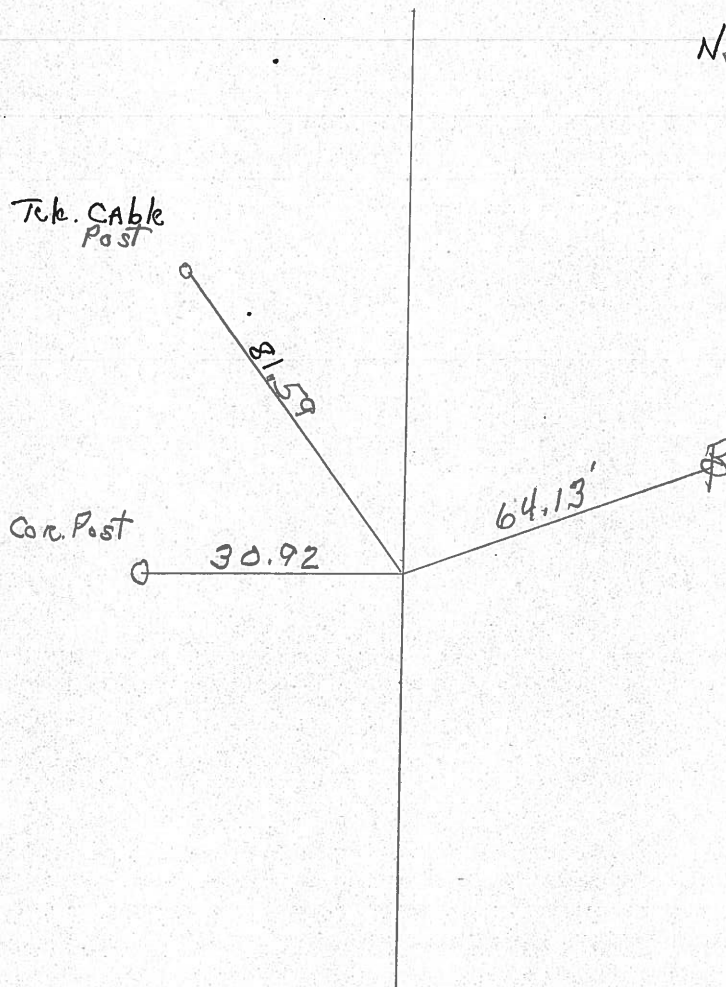
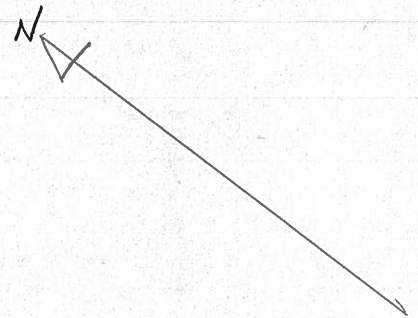
Tel. Cable
Post

81.59

Cor. Post

30.92

64.13'



PERSONNEL TITLE PERSONNEL TITLE

COUNTY Seneca

DATE 2-19-64

Krabill

Kowaleski

S. R. # 101

WEATHER

Geyman

SEC.

TEMP.

Bruggeman

DESCRIPTION S.R. # 101 Tiffin to Sen. Co. Line

JOB NO.

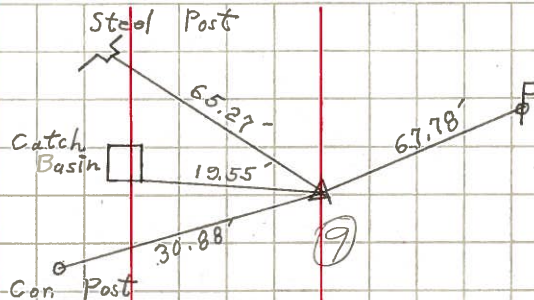
LEFT

CENTER LINE

RIGHT

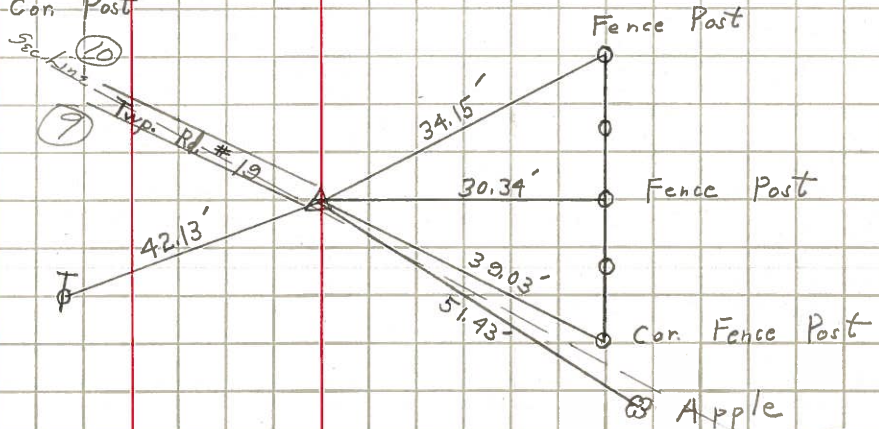
55

STA. 134+65
R.R. Spike # 405



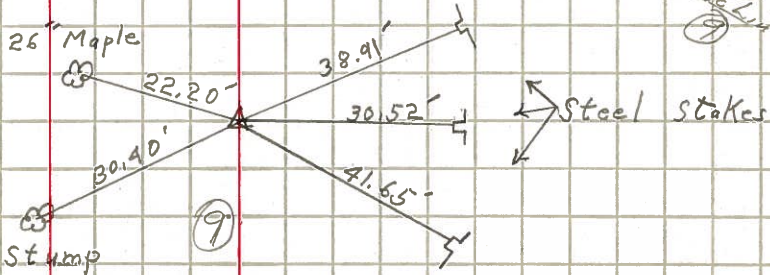
56

STA. 144+34.30'
R.R. Spike # 406



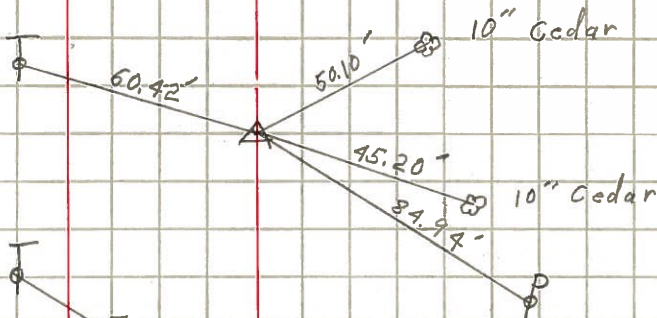
57

STA. 160+00
Iron Pin # 407



58

STA. 173+00
Iron Pin # 408



59

STA. 181+00
Iron Pin # 409

