

O.D.O.T. DISTRICT 2 SURVEY OFFICE (USE ONLY)

PERSONNEL

REFERENCE NO. 57

SHEET 36 OF 46

NOTES HOMAN

DATE 7-8-09

ROUTE SR 101

H.C. HOMAN

WEATHER SUNNY

COUNTY SENECA

R.C. ROUSOS

TEMP. 80°F

TOWNSHIP ADAMS

SECTION 10

DWG BY MAHLER PID 100787

T 3 N R 16 E

TYPE MONUMENT P.K.NAIL

ON SURFACE - ~~BELOW~~ ON

OFFSET  $\odot$  PAVEMENT 1' LT : ~~RT~~

- TO - EDGE PAVEMENT

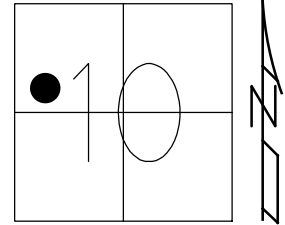
STATION: 669+83

HORIZ.DATUM: NAD83 (2011)

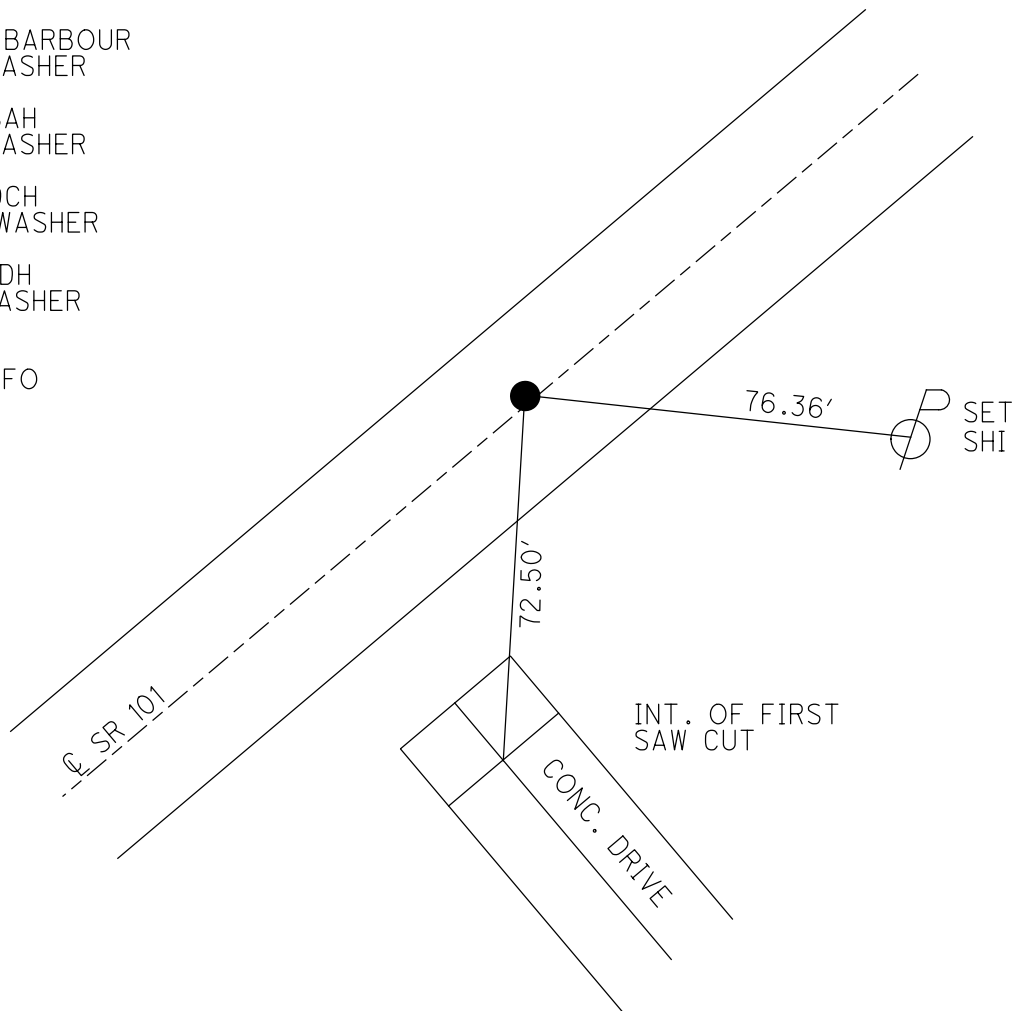
GEOID: NAVD88-2012A

GRID: NORTHING: 572234.022

EASTING: 1828028.785



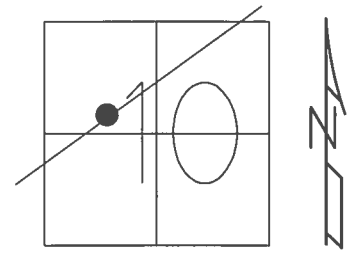
RECORD:  
 STA. 160+00  
 FD R.R. SPIKE  
 4" DOWN  
 8/28/90, BARBOUR  
 FD P.K./WASHER  
 2" DOWN  
 7/7/05, SAH  
 FD P.K./WASHER  
 REF57  
 7/8/09, DCH  
 SET MAG/WASHER  
 NEWREF57  
 10/6/09, DH  
 FD MAG/WASHER  
 REF57  
 6/15/16  
 9/19/17, JFO



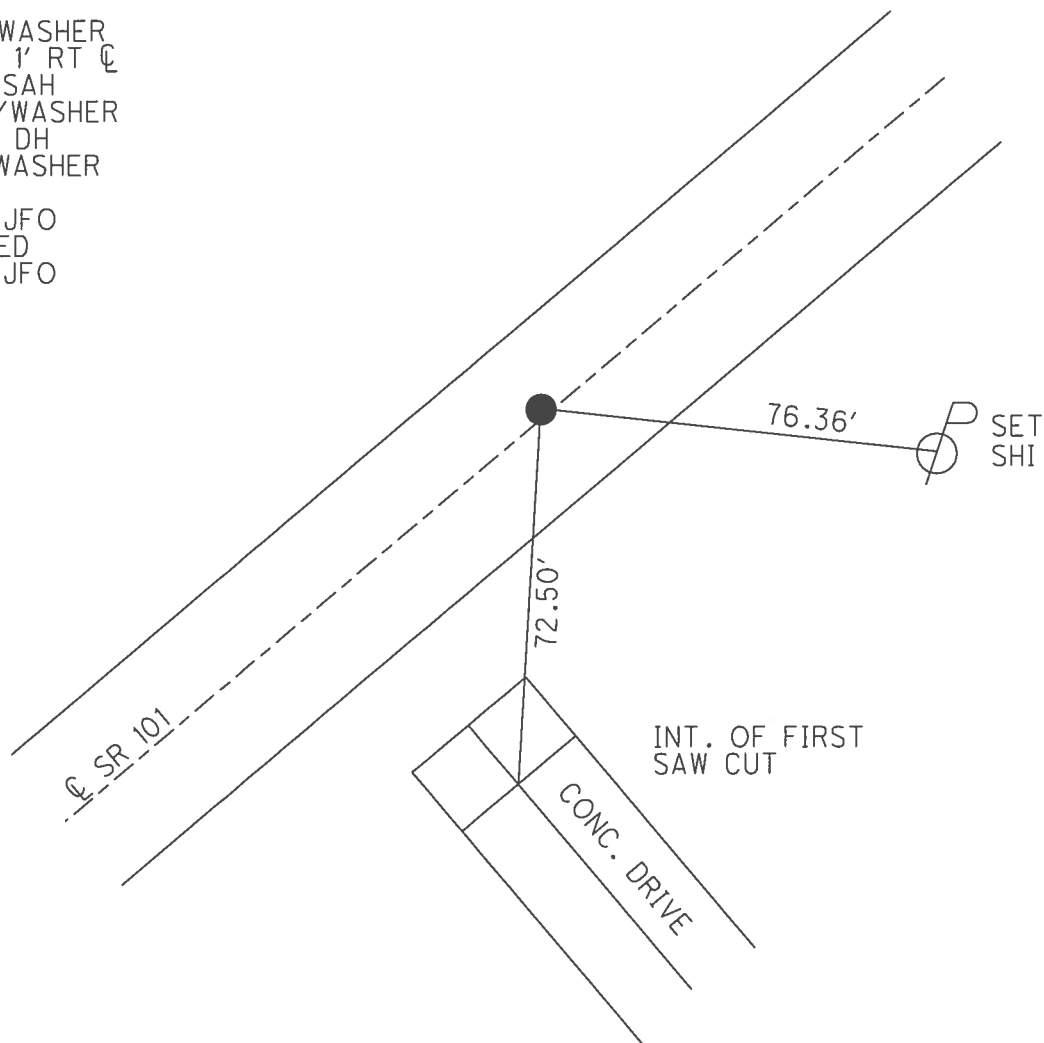
O.D.O.T. DISTRICT 2 SURVEY OFFICE (USE ONLY)

PERSONNEL	REFERENCE NO.	57	SHEET	36	OF	46
NOTES	HOMAN	DATE	7/08/09	ROUTE	SR 101	
H.C.	HOMAN	WEATHER	SUNNY	COUNTY	SENECA	
R.C.	ROUSOS	TEMP.	80°	TOWNSHIP	ADAMS	
				SECTION	10	
				T	3	N
				R	16	E

TYPE MONUMENT P.K.NAIL  
~~ON SURFACE~~ - BELOW ON  
~~LEFT~~ - Q PAV'T - RIGHT 1'  
- TO - EDGE PAVEMENT  
 S.L.M. 669+83  
 GRID: NORTHING: 572234.022 EASTING: 1828028.785



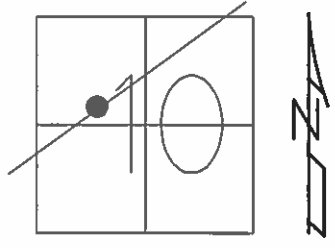
RECORD:  
 STA. 160+00  
 FD R.R. SPIKE  
 4" DOWN  
 8/28/90  
 FD P.K./WASHER  
 2" DOWN, 1' RT Q  
 7/7/05, SAH  
 SET MAG/WASHER  
 10/6/09, DH  
 FD MAG/WASHER  
 REF57  
 6/15/16, JFO  
 UNCOVERED  
 9/19/17, JFO



**O.D.O.T. DISTRICT 2 SURVEY OFFICE (USE ONLY)**

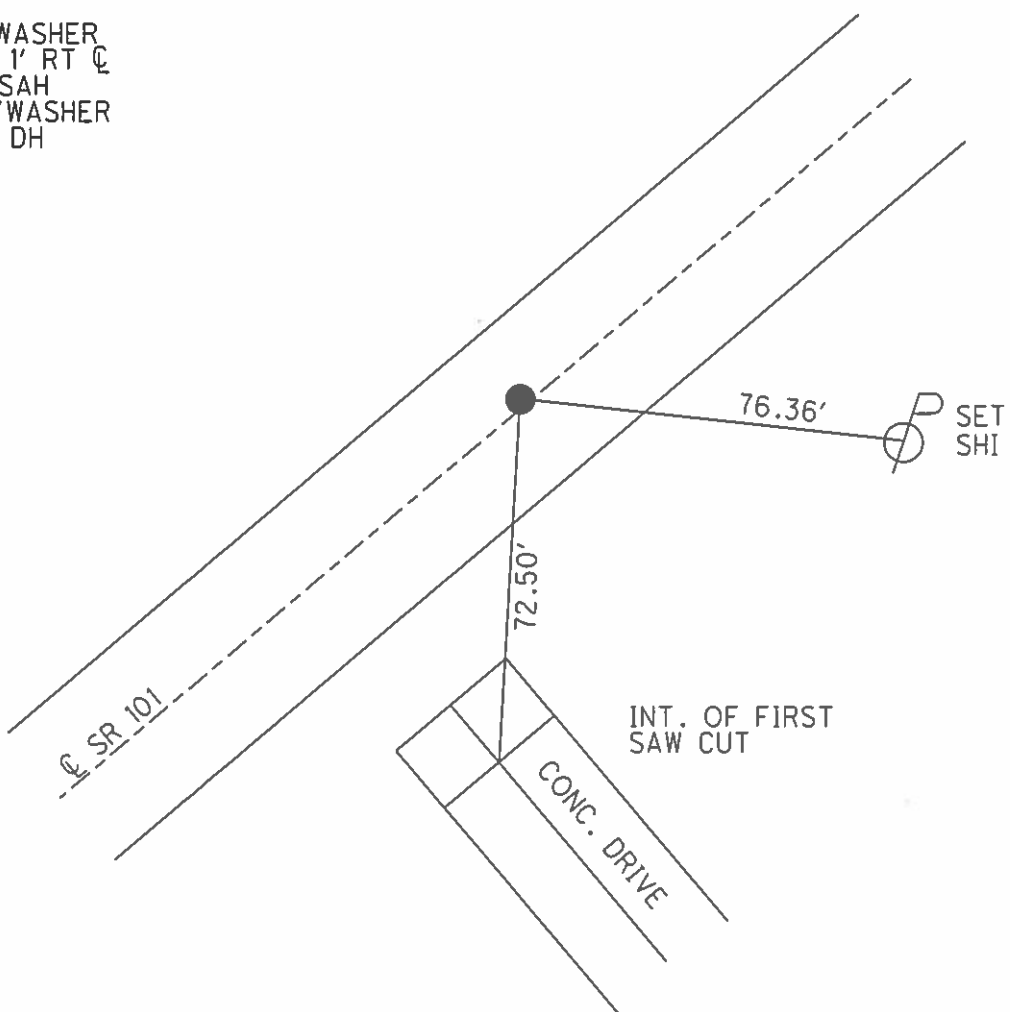
PERSONNEL	REFERENCE NO.	<u>57</u>	SHEET	<u>36</u>	OF	<u>46</u>
NOTES	HOMAN	DATE	<u>7/08/09</u>	ROUTE	<u>SR 101</u>	
H.C.	HOMAN	WEATHER	<u>SUNNY</u>	COUNTY	<u>SENECA</u>	
R.C.	ROUSOS	TEMP.	<u>80°</u>	TOWNSHIP	<u>ADAMS</u>	
				SECTION	<u>10</u>	
				T	<u>3</u>	R
					<u>16</u>	E

TYPE MONUMENT P.K.NAIL  
~~ON SURFACE~~ - BELOW ON  
 LEFT - Q PAV'T - ~~RIGHT~~ 1'  
 - TO - EDGE PAVEMENT  
 S.L.M. 669+83



GRID: NORTHING: 572234.023    EASTING: 1828028.760

RECORD:  
 STA. 160+00  
 FD R.R. SPIKE  
 4" DOWN  
 8/28/90  
 FD P.K./WASHER  
 2" DOWN, 1' RT Q  
 7/7/05, SAH  
 SET MAG/WASHER  
 10/6/09, DH



O.D.O.T. DISTRICT 2 SURVEY OFFICE

PERSONNEL

REFERENCE NO. 57

SHEET 32 OF 41

NOTES Ripple

H.C. Barkour

DATE 8-28-90

ROUTE 101

R.C. Geyman

WEATHER SUNNY

COUNTY Sen

TEMP. 89°

TOWNSHIP Adams

SECTION 10

T. 3 N R. 16 E

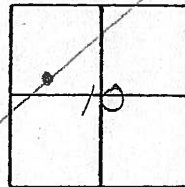
TYPE MONUMENT \_\_\_\_\_

ON SURFACE - BELOW R/e Spike 4" down

LEFT - ¢ PAV'T. - RIGHT 1' LT. ¢

TO \_\_\_\_\_ EDGE PAVEMENT

S.L.M. \_\_\_\_\_



669+83

STA 160

Located with Metal Detector

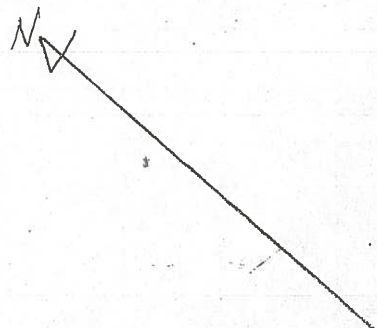
No possible Ties

ON Top of Hill

Fd PK/W  
 2" down  
 1' Rt of ¢

---

SAH/DH  
 07-07-05



Fd hole  
2-7-05  
SAH

O.D.O.T. DISTRICT 2 SURVEY OFFICE

PERSONNEL

REFERENCE NO. 57

SHEET 32 OF 41

NOTES Ripple

H.C. Barkour

R.C. Peyman

DATE 8-28-90

WEATHER Sunny

TEMP. 89°

ROUTE 101

COUNTY Sen

TOWNSHIP Adams

SECTION 10

T 3 N R 16 E

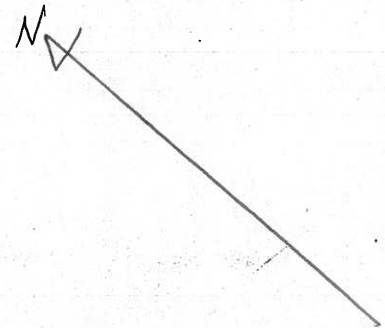
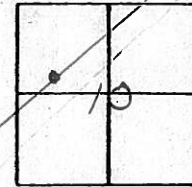
TYPE MONUMENT

ON SURFACE - BELOW R/c Spike 4" down

LEFT - ¢ PAV'T. - RIGHT 1' Lt. ¢

TO EDGE PAVEMENT

S.L.M. \_\_\_\_\_



STA 160

Located with Metal Detector

No possible Ties

ON Top of Hill

PERSONNEL TITLE PERSONNEL TITLE

COUNTY Seneca

DATE 2-14-64

Krabill

Kowaleski

S. R. # 101

WEATHER

Geyman

Bruggeman

SEC.

TEMP.

DESCRIPTION S. R. # 101 Tiffin to Sen. Co. Line

JOB NO.

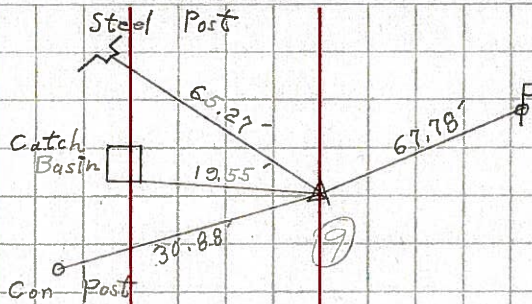
LEFT

CENTER LINE

RIGHT

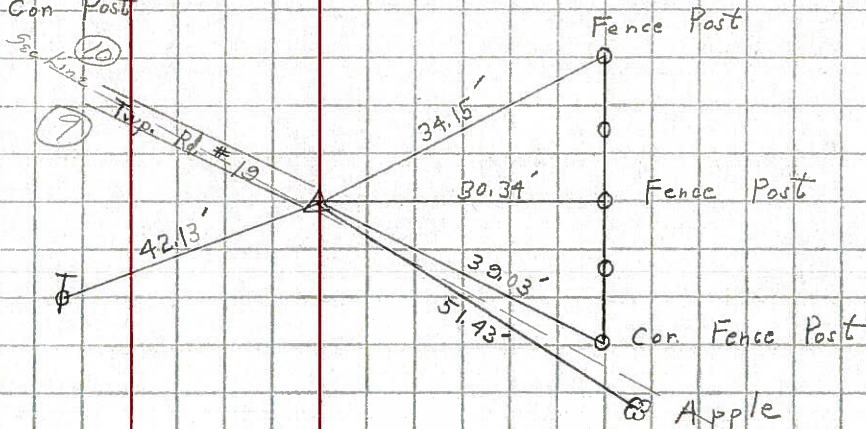
55

STA. 134+65  
R.R. Spike # 405



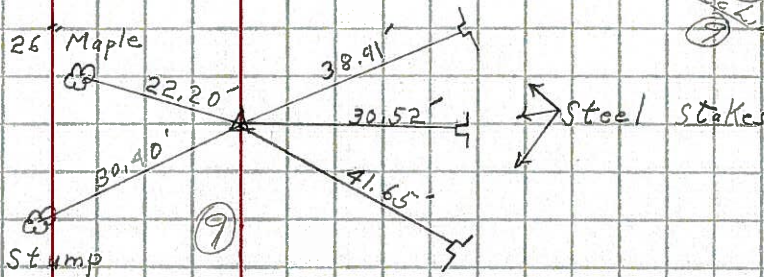
56

STA. 144+34.30'  
R.R. Spike # 406



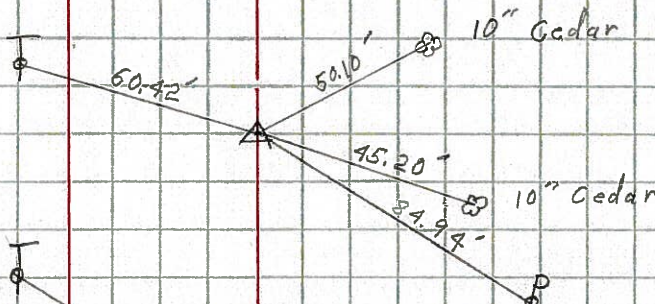
57

STA. 160+00  
Iron Pin # 407



58

STA. 173+00  
Iron Pin # 408



59

STA. 181+00  
Iron Pin # 409

