

O.D.O.T. DISTRICT 2 SURVEY OFFICE (USE ONLY)

PERSONNEL

REFERENCE NO. 58

SHEET 37 OF 46

NOTES HOMAN

DATE 7-8-09

ROUTE SR 101

H.C. HOMAN

WEATHER SUNNY

COUNTY SENECA

R.C. ROUSOS

TEMP. 80°F

TOWNSHIP ADAMS

SECTION 10

DWG BY MAHLER PID 100787

T 3 N R 16 E

TYPE MONUMENT P.K./WASHER

~~ON SURFACE~~ - BELOW 1 1/2"

OFFSET  $\odot$  PAVEMENT ON LT : RT

- TO - EDGE PAVEMENT

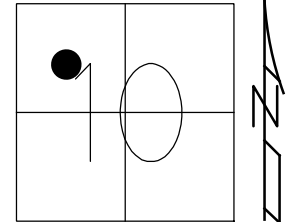
STATION: 682+94

HORZ. DATUM: NAD83 (2011)

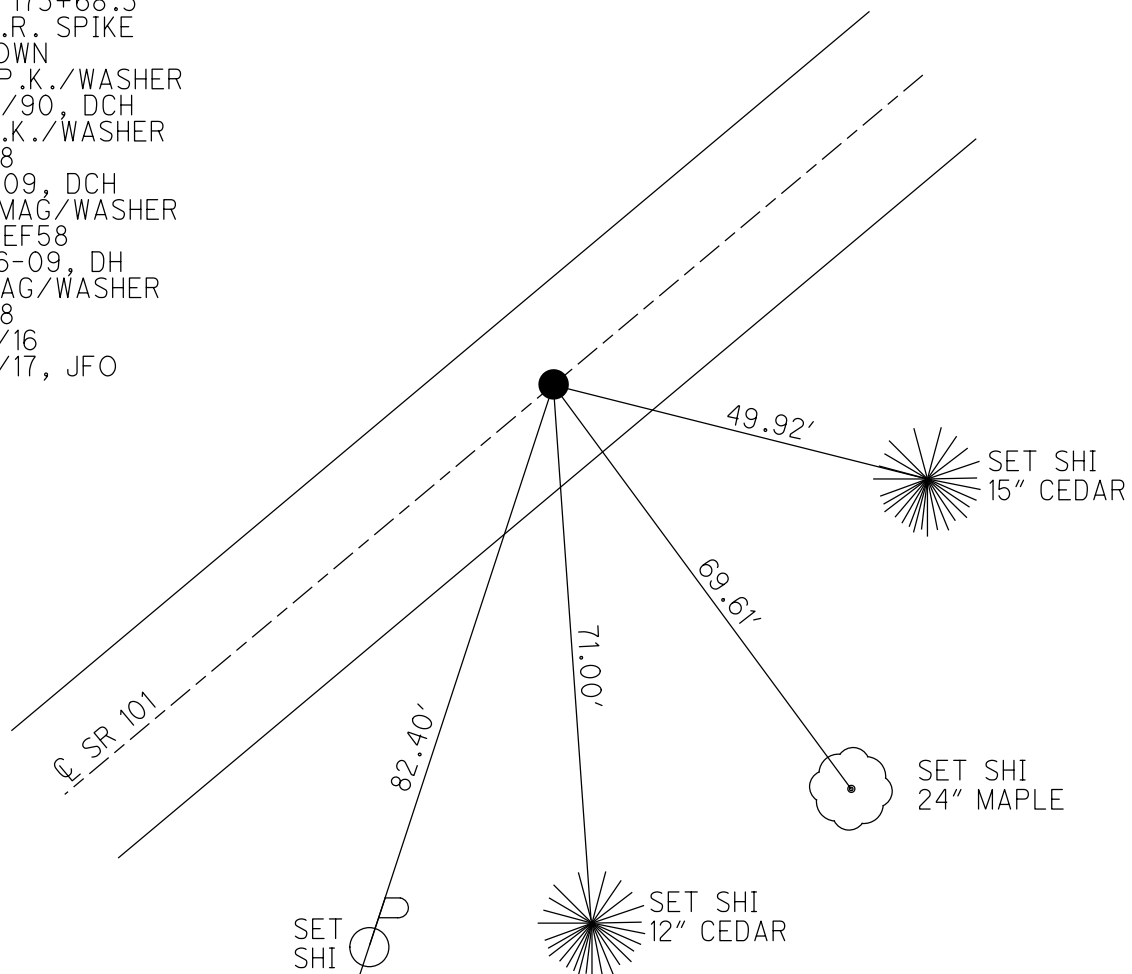
GEOID: NAVD88-2012A

GRID: NORTHING: 573073.894

EASTING: 1829032.964



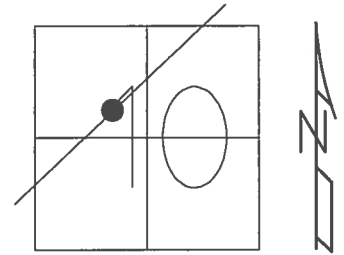
RECORD:  
 STA. 173+68.3  
 FD R.R. SPIKE  
 4" DOWN  
 SET P.K./WASHER  
 8/29/90, DCH  
 FD P.K./WASHER  
 REF58  
 7/8/09, DCH  
 SET MAG/WASHER  
 NEWREF58  
 10-06-09, DH  
 FD MAG/WASHER  
 REF58  
 6/15/16  
 9/19/17, JFO



O.D.O.T. DISTRICT 2 SURVEY OFFICE (USE ONLY)

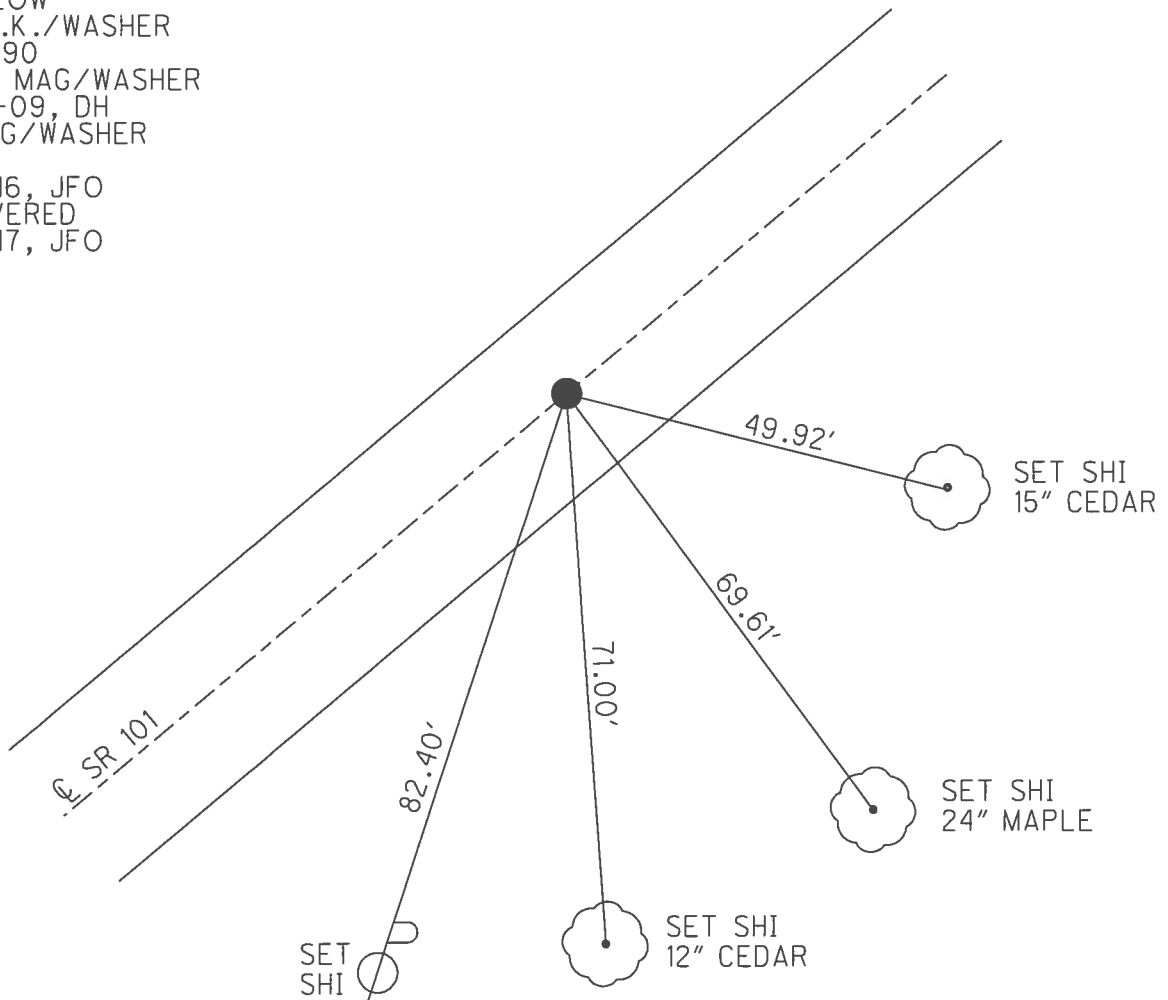
PERSONNEL	REFERENCE NO.	<u>58</u>	SHEET	<u>37</u>	OF	<u>46</u>
NOTES	<u>HOMAN</u>	DATE	<u>7/08/09</u>	ROUTE	<u>SR 101</u>	
H.C.	<u>HOMAN</u>	WEATHER	<u>SUNNY</u>	COUNTY	<u>SENECA</u>	
R.C.	<u>ROUSOS</u>	TEMP.	<u>80°</u>	TOWNSHIP	<u>ADAMS</u>	
				SECTION	<u>10</u>	
				T	<u>3</u>	R
					<u>16</u>	<u>E</u>

TYPE MONUMENT P.K./WASHER  
~~ON SURFACE~~ - BELOW 1 1/2"  
 LEFT - ☉ PAV'T - RIGHT ON  
- TO - EDGE PAVEMENT  
 S.L.M. 682+94



GRID: NORTHING: 573073.894    EASTING: 1829032.964

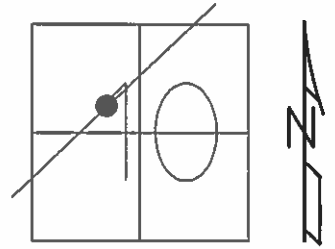
RECORD:  
 STA. 173+68.3  
 FD R.R. SPIKE  
 4" BELOW  
 SET P.K./WASHER  
 8/29/90  
 RESET MAG/WASHER  
 10-06-09, DH  
 FD MAG/WASHER  
 REF58  
 6/15/16, JFO  
 UNCOVERED  
 9/19/17, JFO



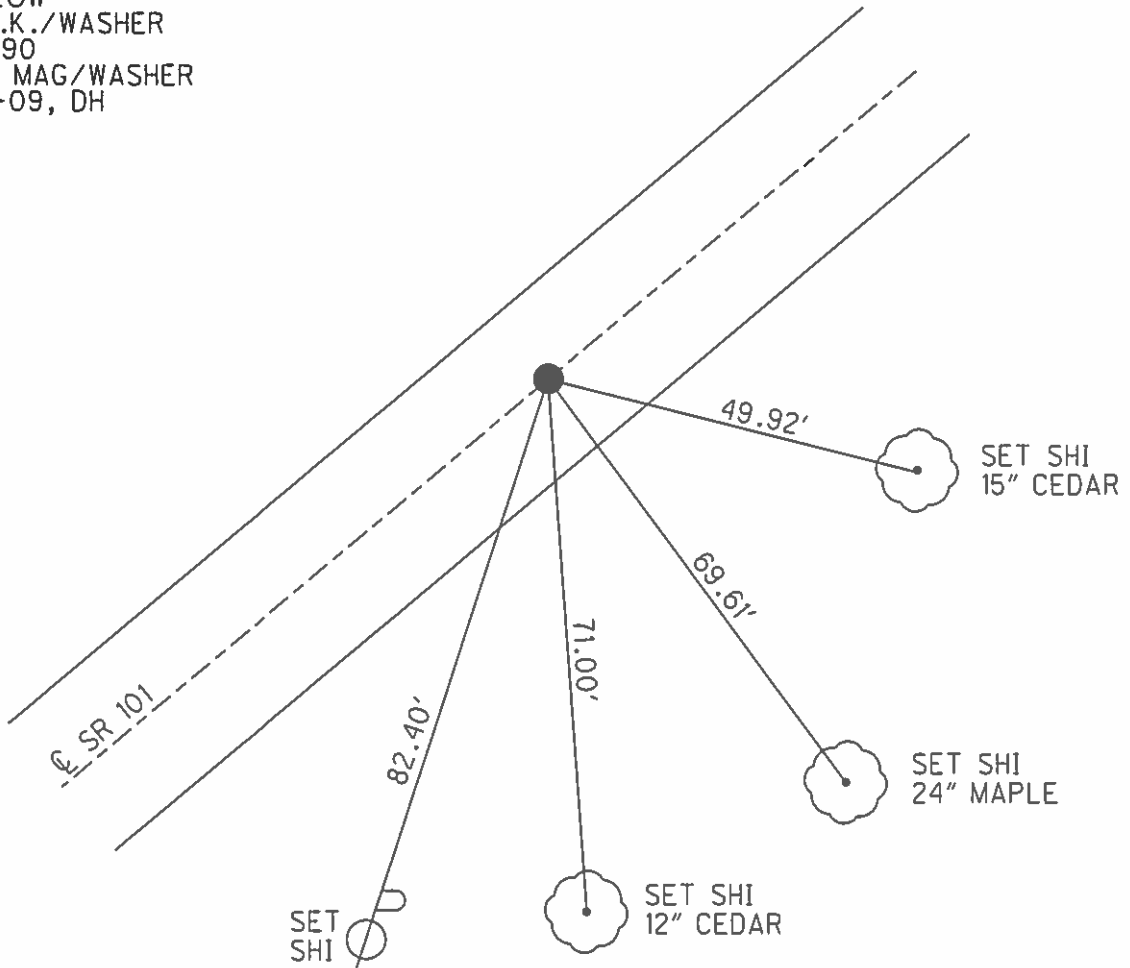
**O.D.O.T. DISTRICT 2 SURVEY OFFICE (USE ONLY)**

PERSONNEL	REFERENCE NO.	58	SHEET	37	OF	46
NOTES	HOMAN	DATE	7/08/09	ROUTE	SR 101	
H.C.	HOMAN	WEATHER	SUNNY	COUNTY	SENECA	
R.C.	ROUSOS	TEMP.	80°	TOWNSHIP	ADAMS	
				SECTION	10	
				T. 3 N	R. 16 E	

TYPE MONUMENT P.K./WASHER  
~~ON SURFACE~~ - BELOW 1 1/2"  
 LEFT - ☉ PAV'T - RIGHT ON  
- TO - EDGE PAVEMENT  
 S.L.M. 682+94  
 GRID: NORTHING: 573073.974 EASTING: 1829032.869



RECORD:  
 STA. 173+68.3  
 FD R.R. SPIKE  
 4" BELOW  
 SET P.K./WASHER  
 8/29/90  
 RESET MAG/WASHER  
 10-06-09, DH



O.D.O.T. DISTRICT 2 SURVEY OFFICE

PERSONNEL

REFERENCE NO. 58

SHEET 33 OF 41

NOTES Ripple

H.C. BARBOUR

DATE 8-29-90

ROUTE 101

R.C. GEYMAN

WEATHER Cloudy

COUNTY Sen.

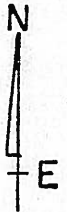
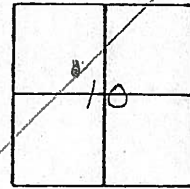
TEMP. 78°

TOWNSHIP Adams

SECTION 10

T 3 N R 16 E

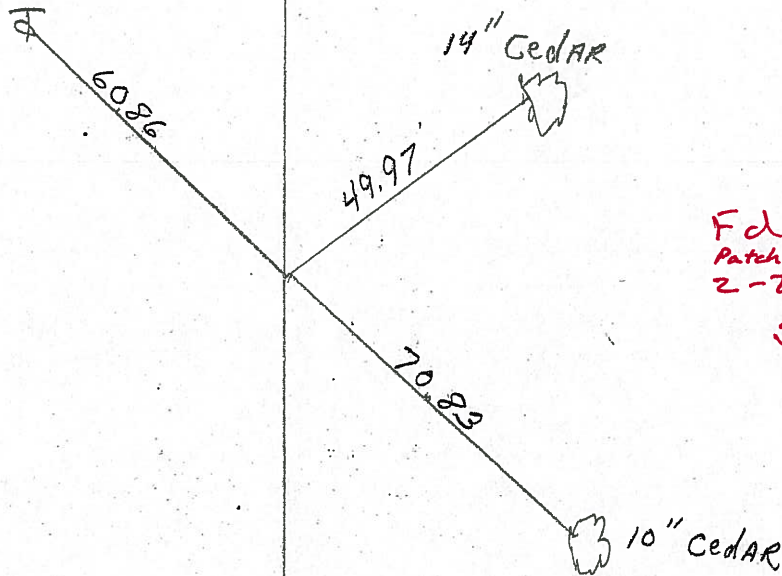
TYPE MONUMENT set. P.K. & Washer  
ON SURFACE - BELOW R/R spike 4" below  
LEFT - CL PAV'T. - RIGHT CL  
TO EDGE PAVEMENT  
S.L.M. \_\_\_\_\_



682+94

STA. 173+11 ±

883+



Fcl (Need to)  
Patch dig  
2-2-05  
SAH

O.D.O.T. DISTRICT 2 SURVEY OFFICE

PERSONNEL

REFERENCE NO. 58

SHEET 33 OF 41

NOTES Ripple

H.C. BARBOUR

R.G. Geyman

DATE 8-29-90

WEATHER Cloudy

TEMP. 78°

ROUTE 101

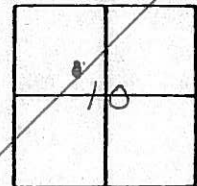
COUNTY Sen.

TOWNSHIP Adams

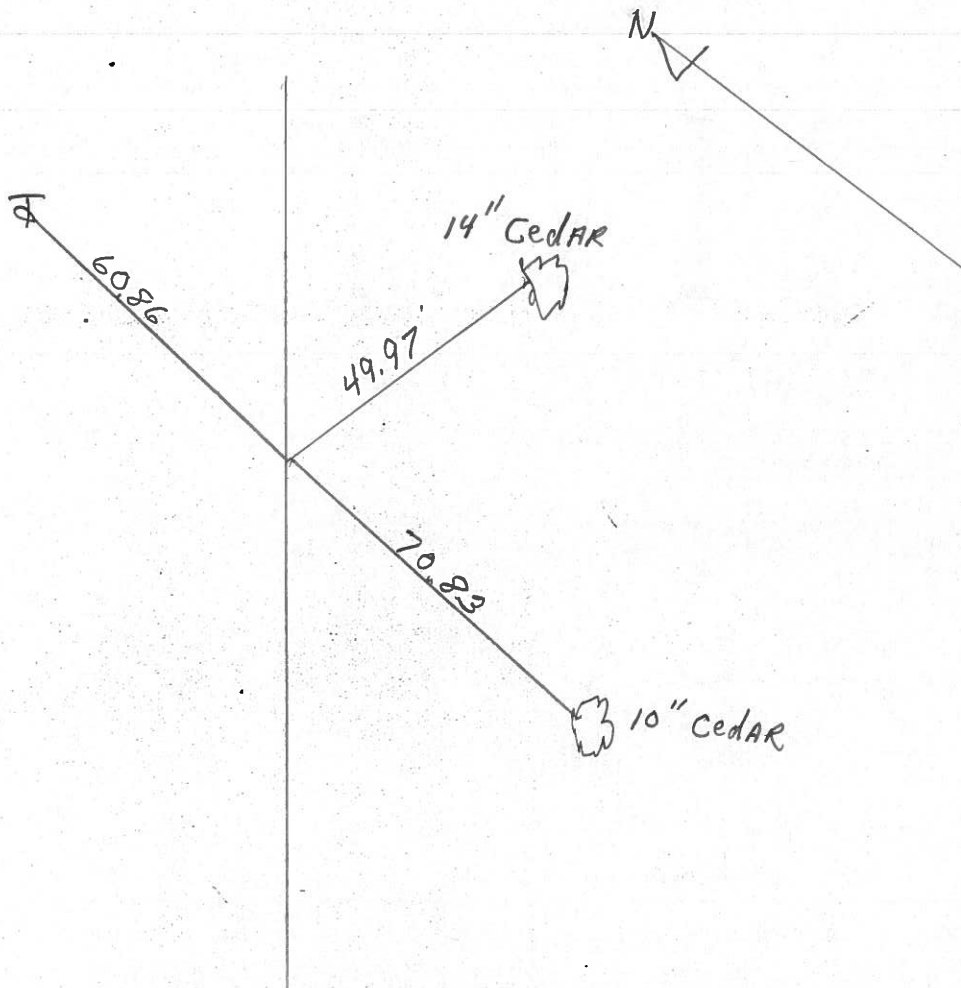
SECTION 10

T3 N R 16 E

TYPE MONUMENT set. P.K. & Washer  
ON SURFACE - BELOW RR spike 4" below  
LEFT - ☉ PAV'T. - RIGHT ☉  
TO EDGE PAVEMENT  
S.L.M. \_\_\_\_\_



STA. 173+  
683+



PERSONNEL TITLE PERSONNEL TITLE

COUNTY SULLY DATE 11-25-63

S. R. # 101 WEATHER

SEC. TEMP.

DESCRIPTION LEFT CENTER LINE RIGHT JOB NO.

(61)

4-20-79  
2/27/69  
Sta. 211+00  
R.R. spk. on E R/W  
1/2" below surface  
411

8508

Found stak:  
Sta. 192+00  
R.R. spk. on E R/W  
3" below surface  
1' RT. &  
411

8507

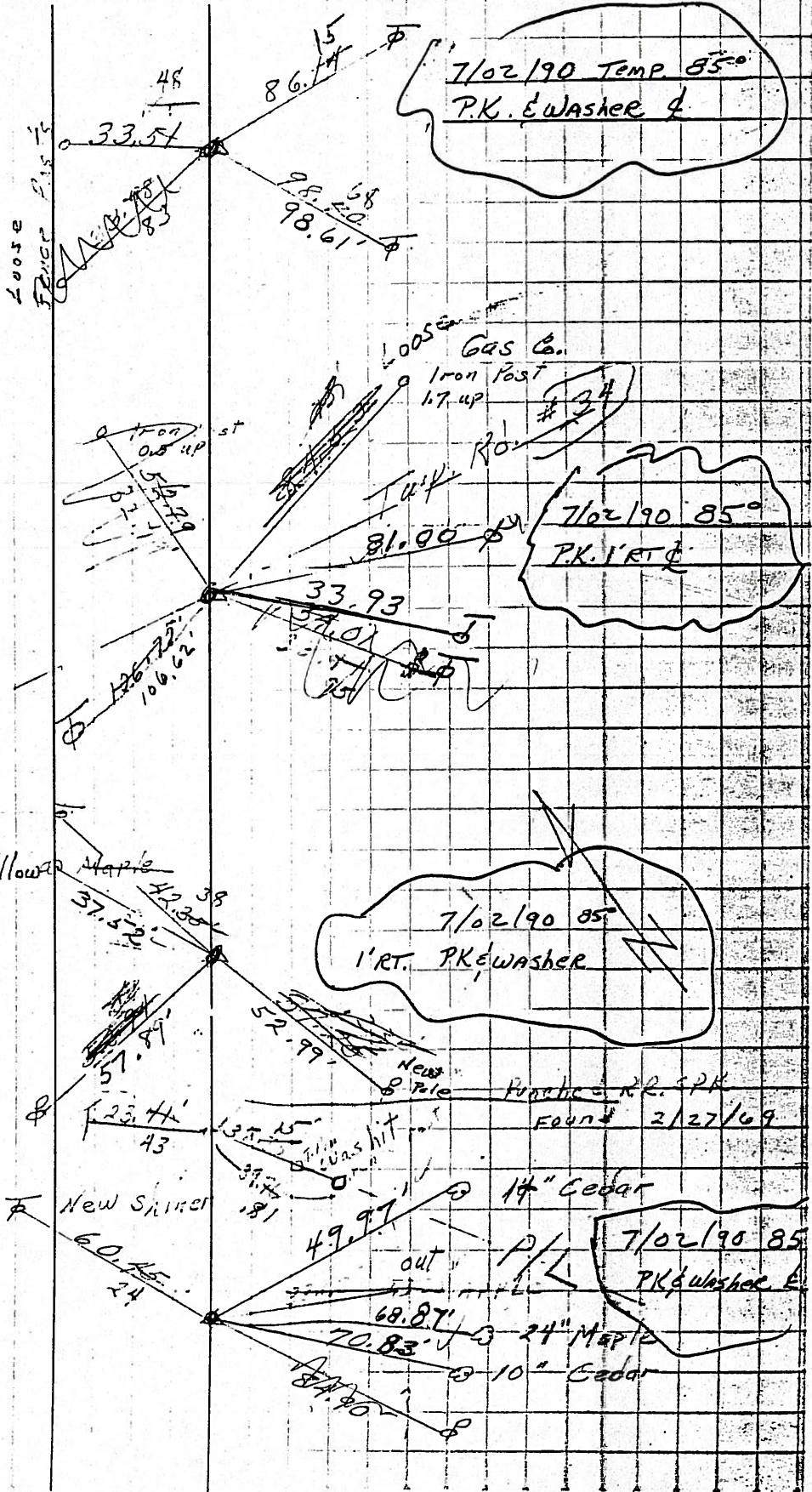
Found 2/27/69  
Sta. 181+00  
R.R. spk. on E R/W  
2" below surface

411

178+  
688+05 8506

T.C. 2/27/69  
Sta. 175+00  
R.R. spk. on E R/W  
2" below surface  
683+

411 8505



(60-A)

(59)

(58)

PERSONNEL TITLE PERSONNEL TITLE

COUNTY Seneca

DATE 2-19-64

Krabill  
Kowaleski  
Geyman  
Bruggeman

S. R. # 101

WEATHER

SEC.

TEMP.

DESCRIPTION S. R. # 101 Tiffin to Sen. Co. Line

JOB NO.

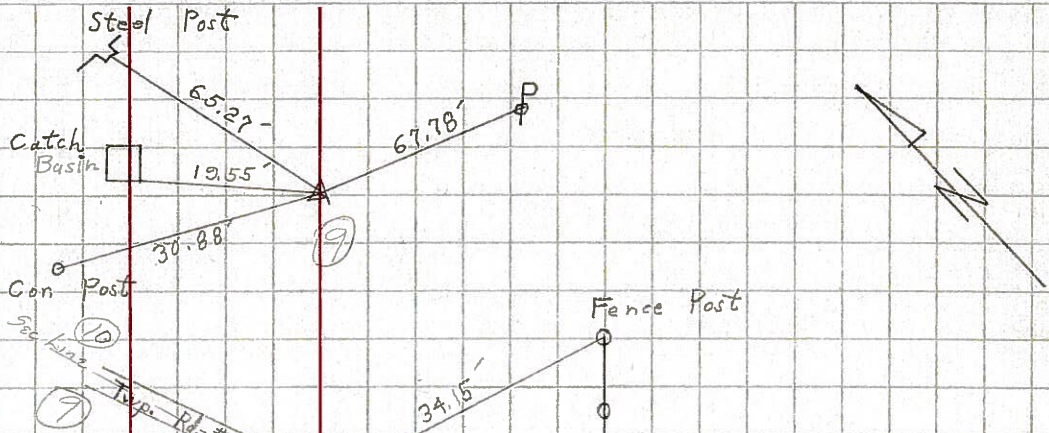
LEFT

CENTER LINE

RIGHT

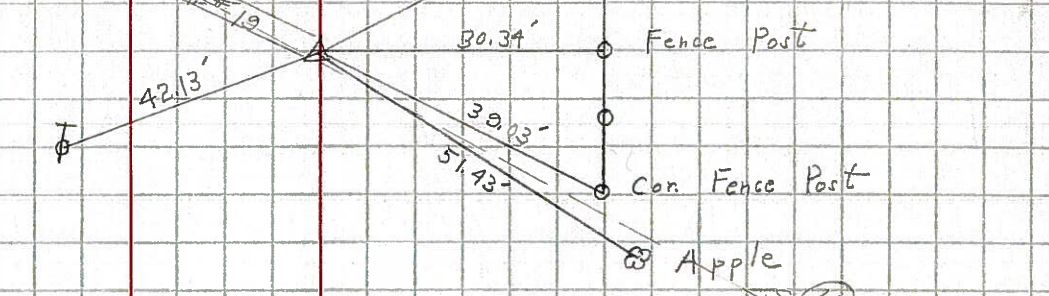
55

STA. 134+65  
R. R. Spike  
# 405



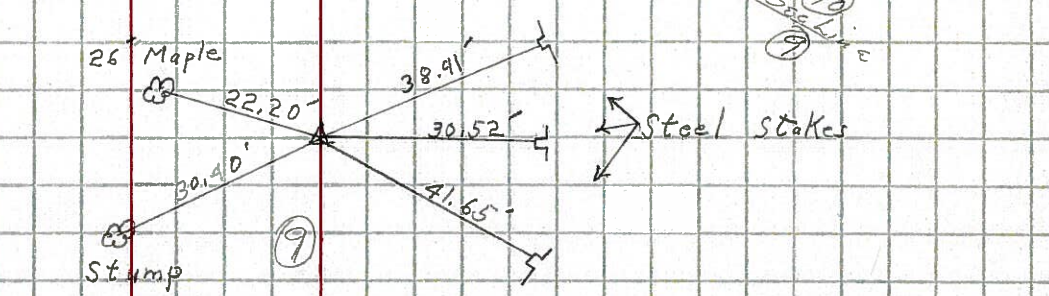
56

STA. 144+34.30'  
R. R. Spike  
# 406



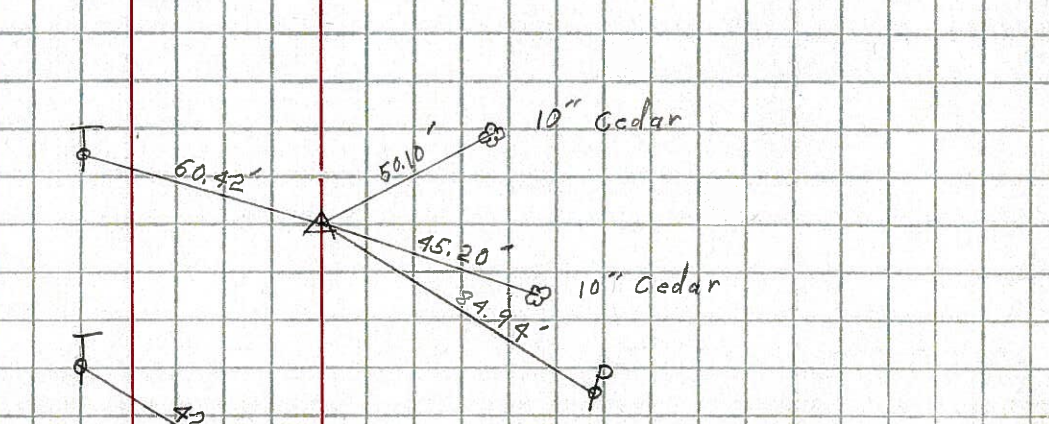
57

STA. 165+00  
Iron Pin  
# 407



58

STA. 173+00  
Iron Pin  
# 408



59

STA. 181+00  
Iron Pin  
# 409

