

O.D.O.T. DISTRICT 2 SURVEY OFFICE (USE ONLY)

PERSONNEL

REFERENCE NO. 60 A

SHEET 40 OF 46

NOTES HOMAN  
 H.C. HOMAN  
 R.C. ROUSOS

DATE 7-8-09  
 WEATHER SUNNY  
 TEMP. 80°F

ROUTE SR 101  
 COUNTY SENECA  
 TOWNSHIP ADAMS  
 SECTION 3  
 T 3 N R 16 E

DWG BY MAHLER PID 25447

TYPE MONUMENT P.K./WASHER

~~ON SURFACE~~ - BELOW 2"

OFFSET 2' ~~ET~~ : RT

- TO - EDGE PAVEMENT

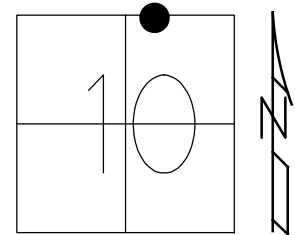
STATION: 701+95

HORIZ.DATUM: NAD83 (2011)

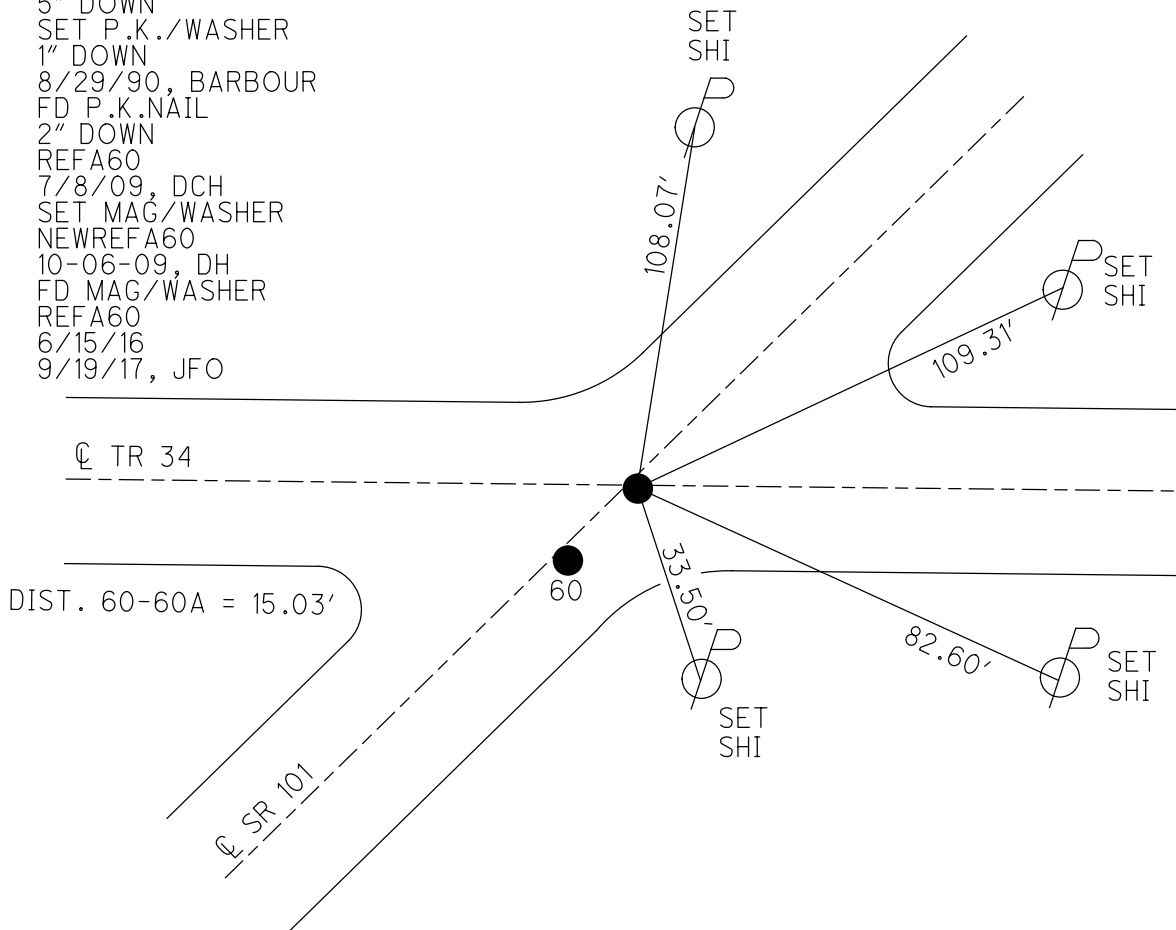
GEOID: NAVD88-2012A

GRID: NORTHING: 574290.410

EASTING: 1830493.199



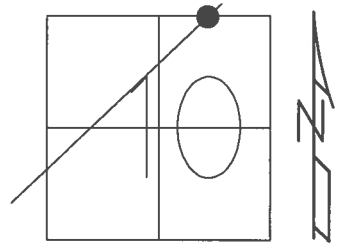
RECORD:  
 STA. 192+00  
 FD R.R. SPIKE  
 5" DOWN  
 SET P.K./WASHER  
 1" DOWN  
 8/29/90, BARBOUR  
 FD P.K.NAIL  
 2" DOWN  
 REFA60  
 7/8/09, DCH  
 SET MAG/WASHER  
 NEWREFA60  
 10-06-09, DH  
 FD MAG/WASHER  
 REFA60  
 6/15/16  
 9/19/17, JFO



**O.D.O.T. DISTRICT 2 SURVEY OFFICE (USE ONLY)**

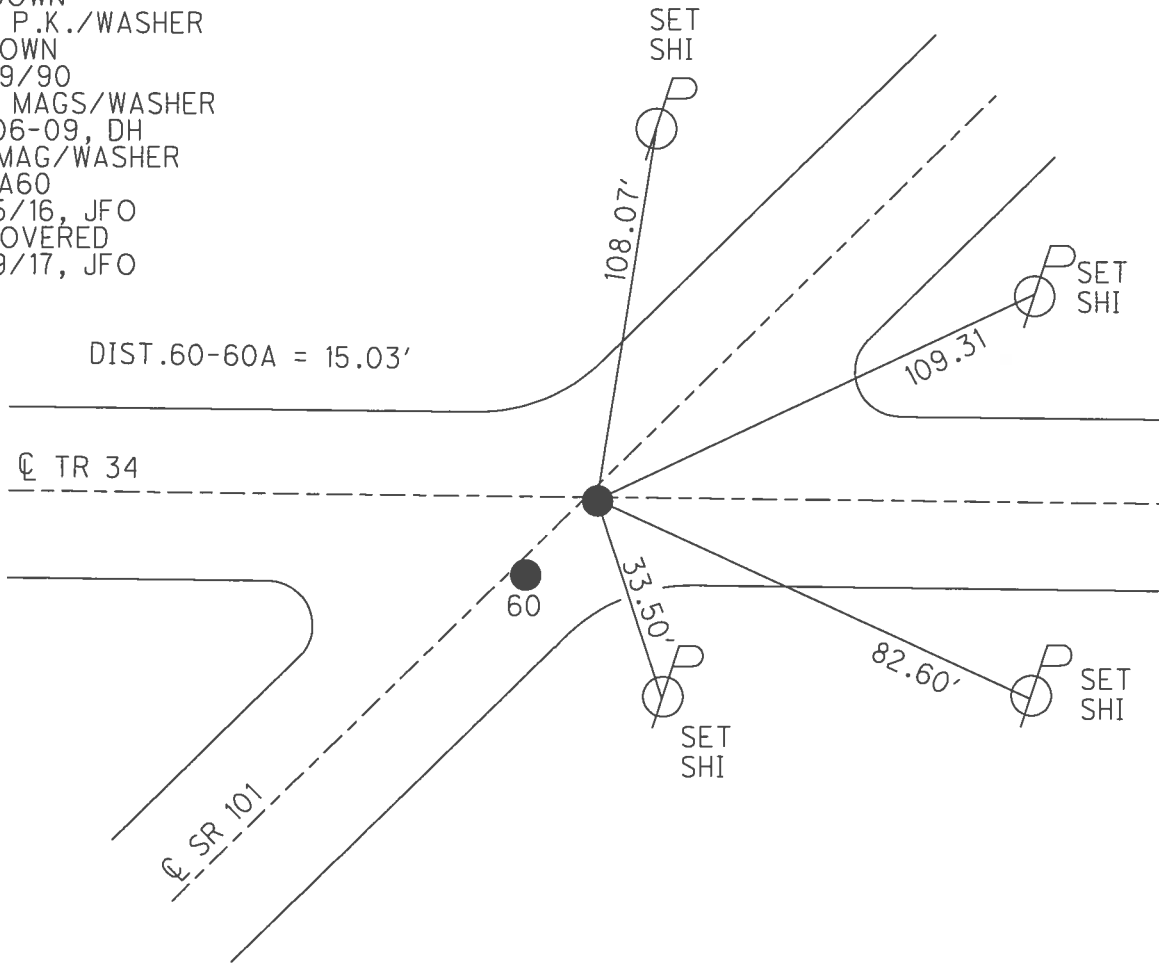
PERSONNEL	REFERENCE NO.	60 A	SHEET	40	OF	46
NOTES	HOMAN	DATE	7/08/09	ROUTE	SR 101	
H.C.	HOMAN	WEATHER	SUNNY	COUNTY	SENECA	
R.C.	ROUSOS	TEMP.	80°	TOWNSHIP	ADAMS	
				SECTION	3	
				T	3	N
				R	16	E

TYPE MONUMENT P.K./WASHER  
~~ON SURFACE~~ - BELOW 2"  
~~LEFT~~ - ☉ PAV'T - RIGHT 2'  
- TO - EDGE PAVEMENT  
 S.L.M. 701+95



GRID: NORTHING 574290.410      EASTING: 1830493.199

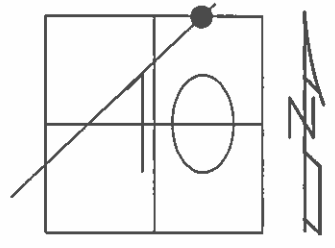
RECORD:  
 STA. 192+00  
 FD R.R. SPIKE  
 5" DOWN  
 SET P.K./WASHER  
 1" DOWN  
 8/29/90  
 SET MAGS/WASHER  
 10-06-09, DH  
 FD MAG/WASHER  
 REFA60  
 6/15/16, JFO  
 UNCOVERED  
 9/19/17, JFO



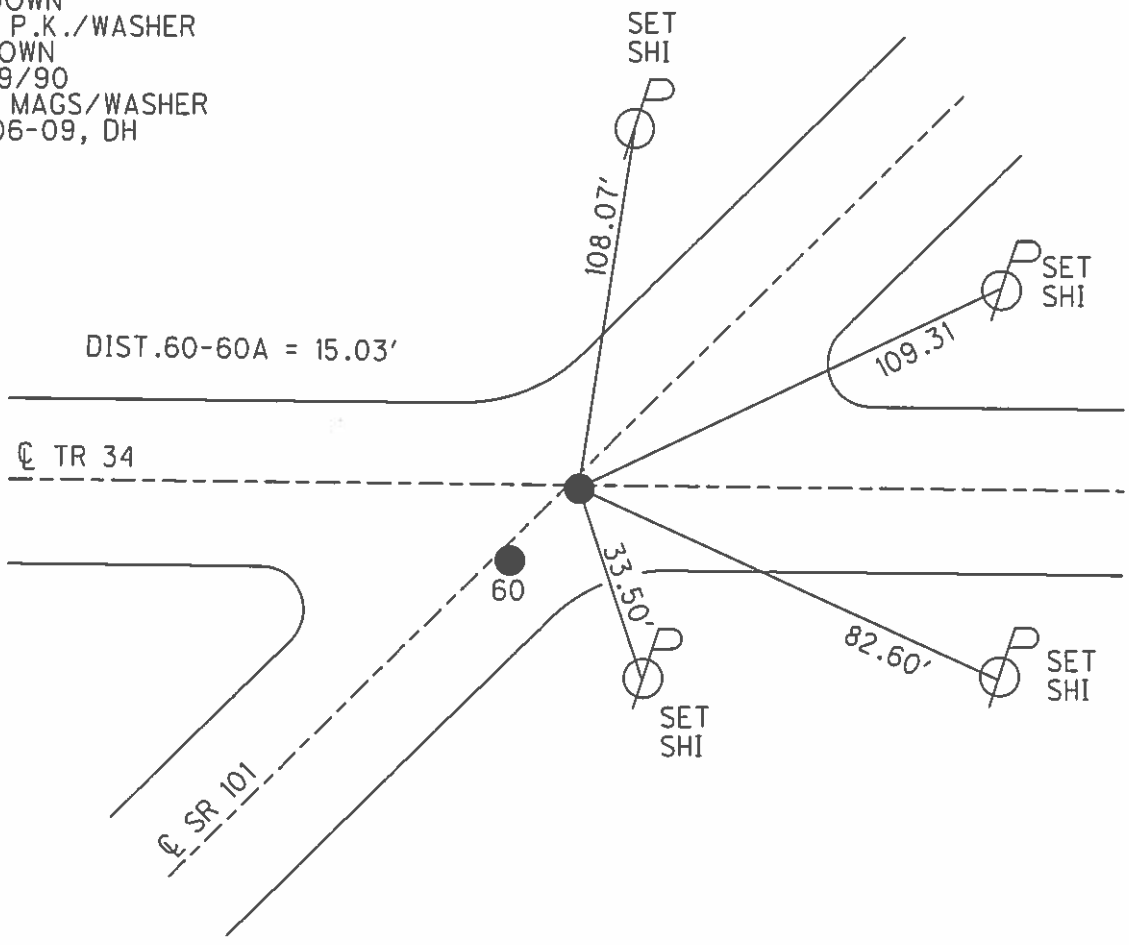
**O.D.O.T. DISTRICT 2 SURVEY OFFICE (USE ONLY)**

PERSONNEL	REFERENCE NO.	60 A	SHEET	40	OF	46
NOTES	HOMAN	DATE	7/08/09	ROUTE	SR 101	
H.C.	HOMAN	WEATHER	SUNNY	COUNTY	SENECA	
R.C.	ROUSOS	TEMP.	80°	TOWNSHIP	ADAMS	
				SECTION	3	
				T	3	N
				R	16	E

TYPE MONUMENT P.K./WASHER  
~~ON SURFACE~~ - BELOW 2"  
~~LEFT~~ - Q PAV'T - RIGHT 2'  
- TO - EDGE PAVEMENT  
 S.L.M. 701+95  
 GRID: NORTHING 574280.661 EASTING: 1830481.669



RECORD:  
 STA. 192+00  
 FD R.R. SPIKE  
 5" DOWN  
 SET P.K./WASHER  
 1" DOWN  
 8/29/90  
 SET MAGS/WASHER  
 10-06-09, DH



O.D.O.T. DISTRICT 2 SURVEY OFFICE

PERSONNEL \_\_\_\_\_

REFERENCE NO. 60

SHEET 35 OF 41

NOTES Ripple

H.C. Barbour

DATE 8-29-90

ROUTE 701

R.C. GEYMAN

WEATHER Cloudy

COUNTY Sen.

TEMP. 78°

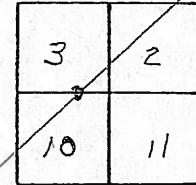
TOWNSHIP Adams

SECTION 3

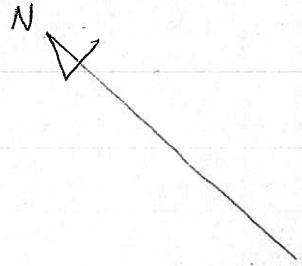
T. 3 N. R. 16 E.

TYPE MONUMENT P.K. & Washer 1" down  
 ON SURFACE - BELOW R/R spike 5" down  
 LEFT- & PAV'T. - RIGHT 2 RT. &  
 TO \_\_\_\_\_ EDGE PAVEMENT  
 S.L.M. \_\_\_\_\_

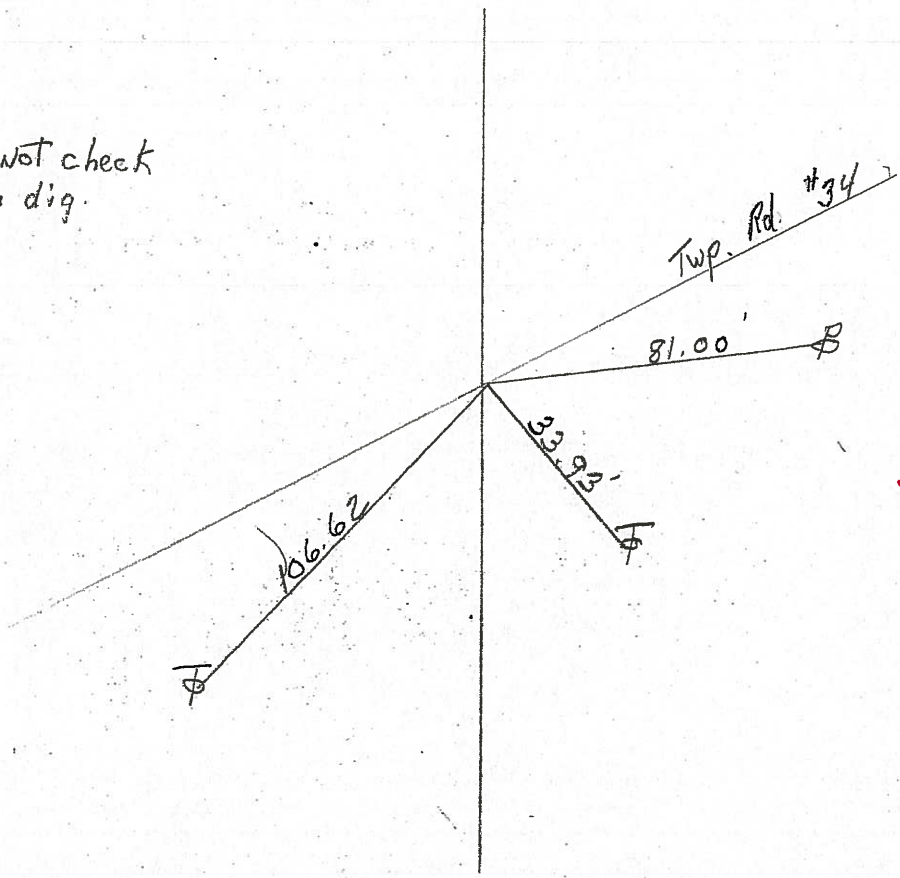
**60-A**



701+95



STA. 192+  
 Ties Did not check  
 suggest you dig.



Fd hole (dig)  
 2-7-05  
 SAH



# O.D.O.T. DISTRICT 2 SURVEY OFFICE

PERSONNEL \_\_\_\_\_

REFERENCE NO. 60

SHEET 35 OF 41

NOTES Ripple

H.C. Barbour

R.G. Geyman

DATE 8-29-90

WEATHER Cloudy

TEMP. 78°

ROUTE 101

COUNTY Sen.

TOWNSHIP Adams

SECTION 3

T 3 N R 16 E

TYPE MONUMENT P.K. + Washer 1" down

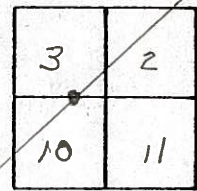
ON SURFACE - BELOW R/R spike 5" down

LEFT- & PAV'T. - RIGHT 2 RT. &

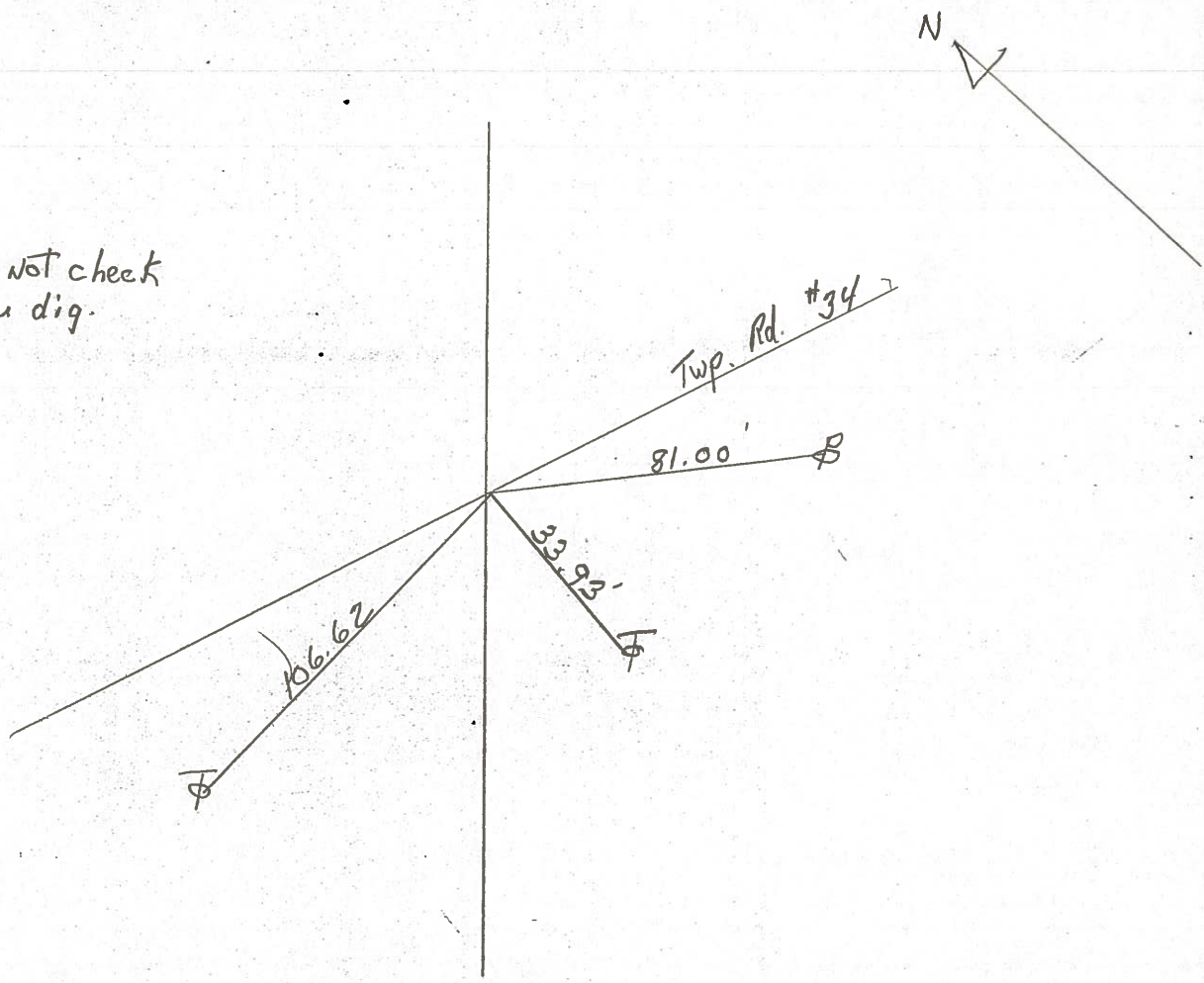
\_\_\_\_\_ TO \_\_\_\_\_ EDGE PAVEMENT

S.L.M. \_\_\_\_\_

60-A



STA. 192+  
Ties Did not check  
suggest you dig.





PERSONNEL TITLE PERSONNEL TITLE

COUNTY SULLY

DATE 11-25-63

S. R. # 101

WEATHER

SEC.

TEMP.

DESCRIPTION

LEFT

CENTER LINE

RIGHT

JOB NO.

4-29-79

2/27/69

Sta. 211+00  
R.R. spk. on & R/W  
1/2" below surface

411

8508

Found

Sta. 192+00

R.R. spk. on & R/W  
3" below surface  
1' RT. &

411

8507

Found

Sta. 181+00

R.R. spk. on & R/W  
2" below surface

411

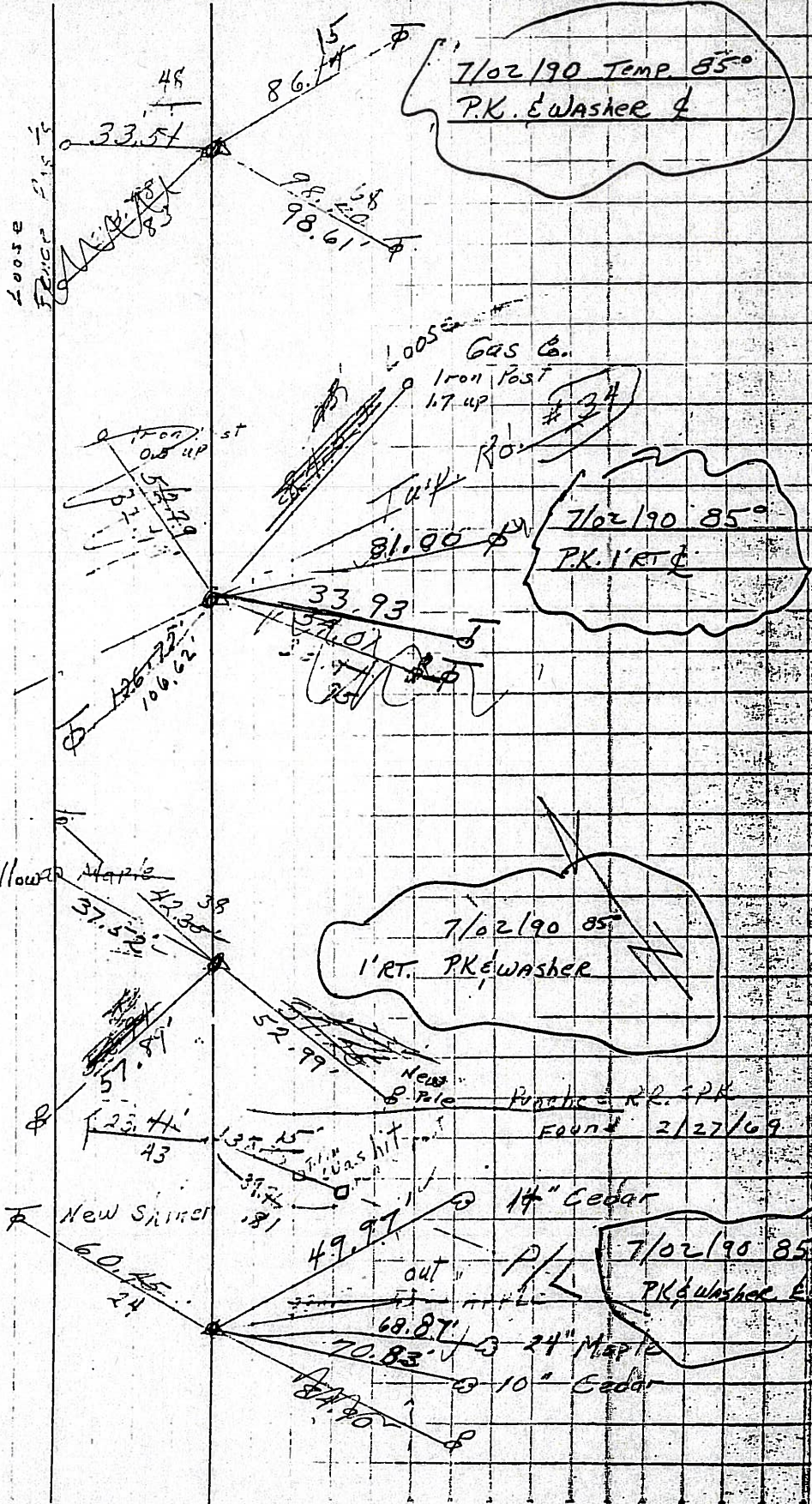
178+  
688+00 8506

Found

Sta. 175+00

R.R. spk. on & R/W  
2" below surface  
683+

411 8505



(61)

(60-A)

(59)

(58)



PERSONNEL TITLE PERSONNEL TITLE

COUNTY Seneca

DATE 2-14-64

Krabill

Kowaleski

S. R. # 101

WEATHER

Geyman

SEC.

TEMP.

Bruggeman

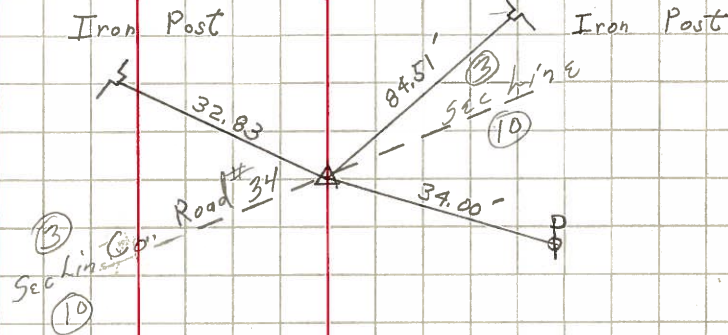
DESCRIPTION S. R. # 101 Tiffin to Sen. Co line

JOB NO.

LEFT CENTER LINE RIGHT

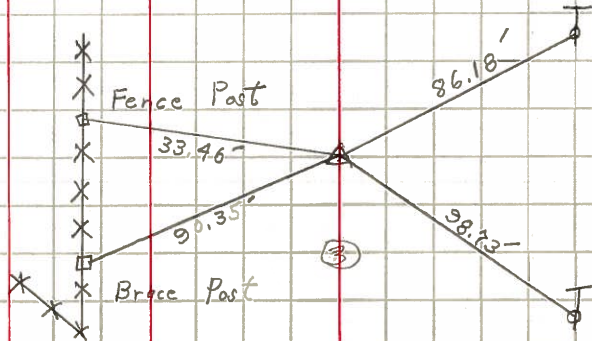
60-A

STA. 192+00  
Iron Pin # 410



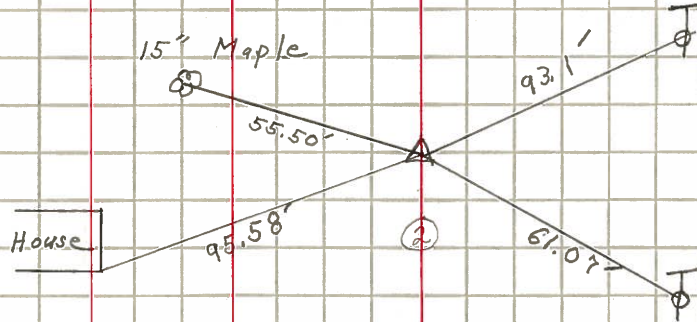
61

STA. 211+00  
Iron Pin # 411



62

STA. 224+00  
Iron Pin # 412



63

STA. 232+00  
Iron Pin # 413

