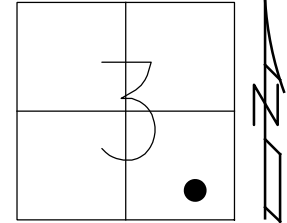


O.D.O.T. DISTRICT 2 SURVEY OFFICE (USE ONLY)

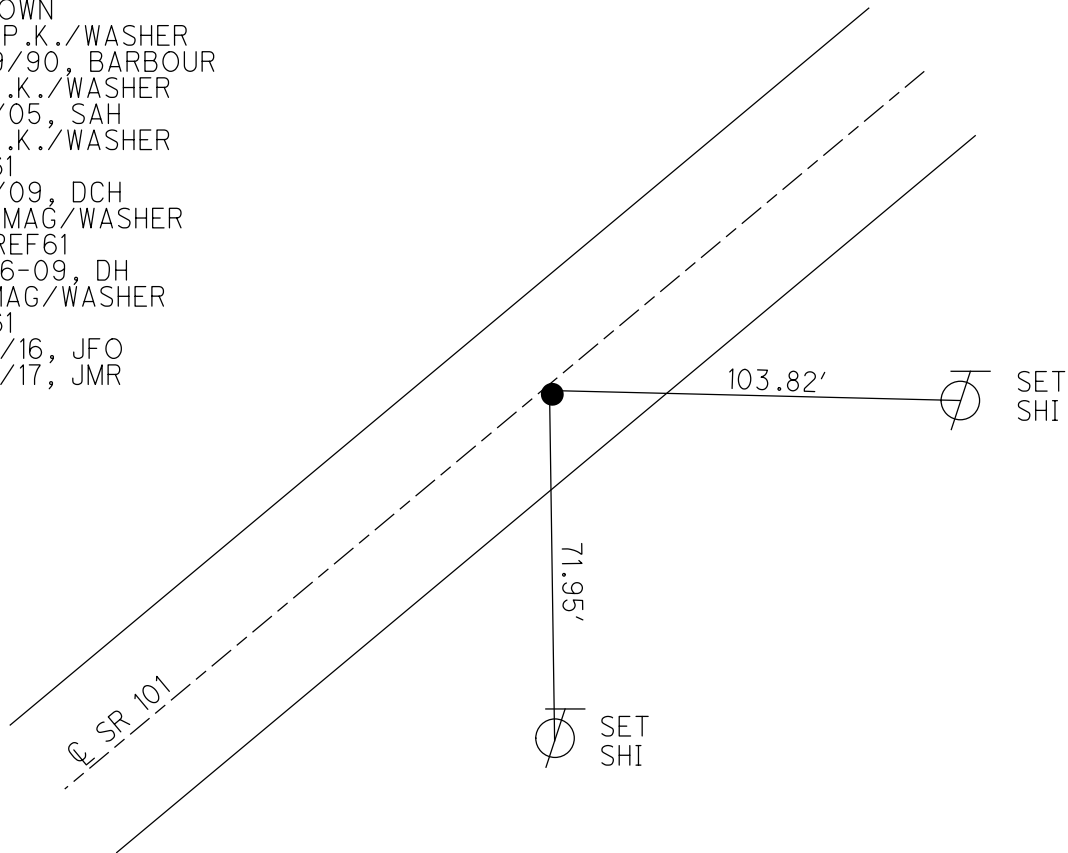
PERSONNEL _____ REFERENCE NO. 61 SHEET 41 OF 46
 NOTES HOMAN DATE 7-8-09 ROUTE SR 101
 H.C. HOMAN WEATHER SUNNY COUNTY SENECA
 R.C. ROUSOS TEMP. 75°F TOWNSHIP ADAMS
 _____ SECTION 3
 DWG BY MAHLER PID 100787 T 3 N R 16 E

TYPE MONUMENT P.K./WASHER
 ON SURFACE - ~~BELOW~~ ON _____
 OFFSET \varnothing PAVEMENT 0.5' ~~ET~~ : RT
 - TO - EDGE PAVEMENT
 STATION: 720+97



HORIZ.DATUM: NAD83 (2011) GEOID: NAVD88-2012A
 GRID: NORTHING: 575519.992 EASTING: 1831940.301

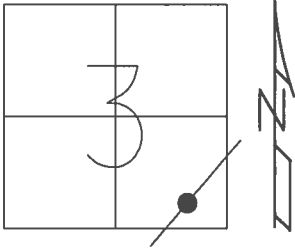
RECORD:
 STA. 211+00
 FD R.R. SPIKE
 4" DOWN
 SET P.K./WASHER
 8/29/90, BARBOUR
 FD P.K./WASHER
 2/7/05, SAH
 FD P.K./WASHER
 REF61
 7/8/09, DCH
 SET MAG/WASHER
 NEWREF61
 10-06-09, DH
 FD MAG/WASHER
 REF61
 6/15/16, JFO
 9/12/17, JMR



O.D.O.T. DISTRICT 2 SURVEY OFFICE (USE ONLY)

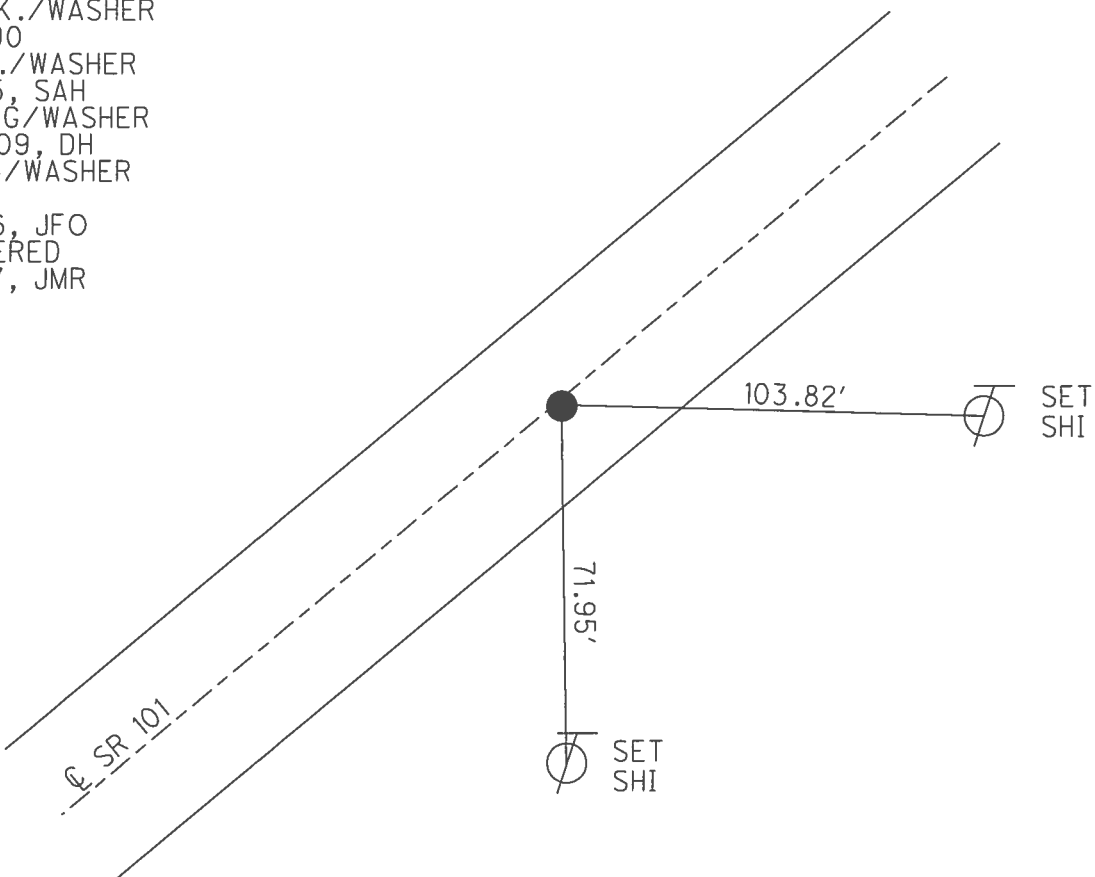
PERSONNEL _____ REFERENCE NO. 61 SHEET 41 OF 46
 NOTES HOMAN DATE 7/08/09 ROUTE SR 101
 H.C. HOMAN WEATHER SUNNY COUNTY SENECA
 R.C. ROUSOS TEMP. 75° TOWNSHIP ADAMS
 _____ SECTION 3
 _____ T 3 N R 16 E

TYPE MONUMENT P.K./WASHER
 ON SURFACE - ~~BELOW~~ ON _____
 LEFT - ☉ PAV'T - RIGHT ON _____
 - TO - EDGE PAVEMENT
 S.L.M. 720+97



GRID: NORTHING: 575519.992 EASTING: 1831940.301

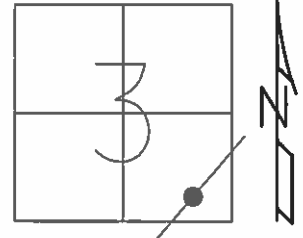
RECORD:
 STA. 211+00
 FD R.R. SPIKE
 4" DOWN
 SET P.K./WASHER
 8/29/90
 FD P.K./WASHER
 2/7/05, SAH
 SET MAG/WASHER
 10-06-09, DH
 FD MAG/WASHER
 REF61
 6/15/16, JFO
 UNCOVERED
 9/12/17, JMR



O.D.O.T. DISTRICT 2 SURVEY OFFICE (USE ONLY)

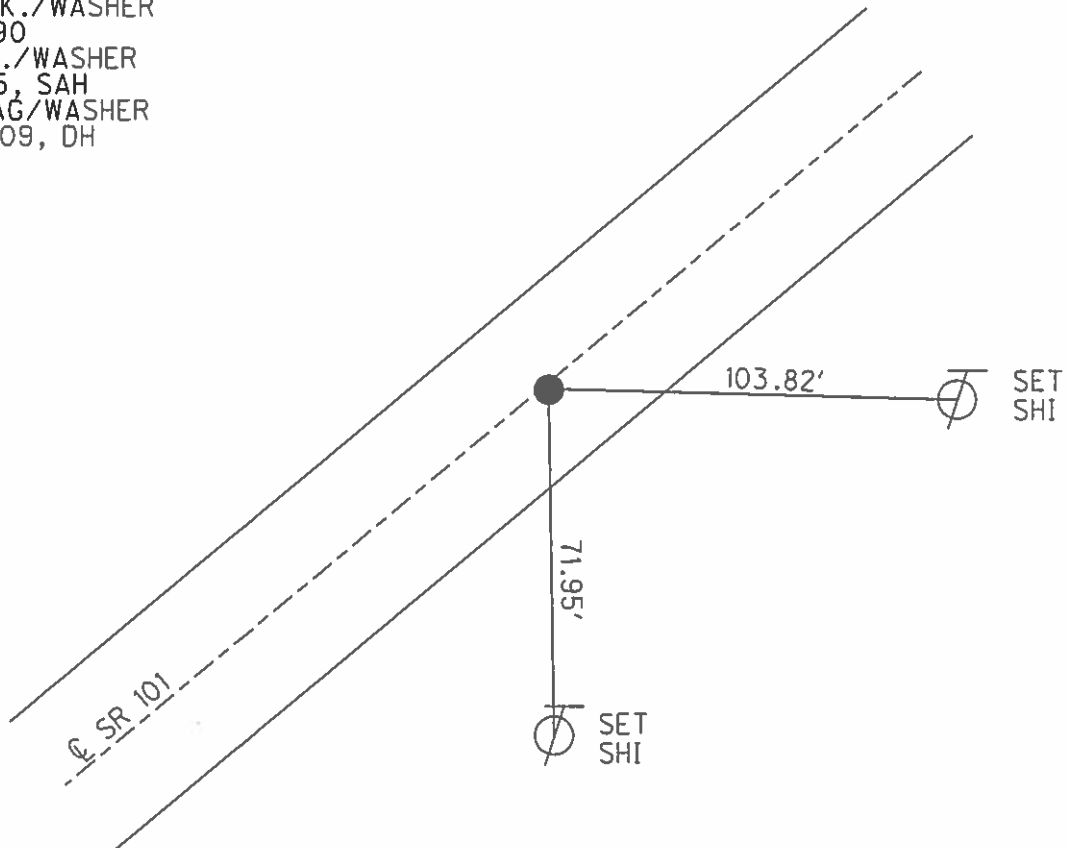
PERSONNEL	REFERENCE NO.	<u>61</u>	SHEET	<u>41</u>	OF	<u>46</u>
NOTES	HOMAN	DATE	<u>7/08/09</u>	ROUTE	<u>SR 101</u>	
H.C.	HOMAN	WEATHER	<u>SUNNY</u>	COUNTY	<u>SENECA</u>	
R.C.	ROUSOS	TEMP.	<u>75°</u>	TOWNSHIP	<u>ADAMS</u>	
				SECTION	<u>3</u>	
				T	<u>3</u>	N
				R	<u>16</u>	E

TYPE MONUMENT P.K./WASHER
 ON SURFACE - ~~BELOW~~ ON
 LEFT - ☉ PAV'T - RIGHT ON
- TO - EDGE PAVEMENT
 S.L.M. 720+97



GRID: NORTHING: 575520.034 EASTING: 1831940.141

RECORD:
 STA. 211+00
 FD R.R. SPIKE
 4" DOWN
 SET P.K./WASHER
 8/29/90
 FD P.K./WASHER
 2/7/05, SAH
 SET MAG/WASHER
 10-06-09, DH



O.D.O.T. DISTRICT 2 SURVEY OFFICE

PERSONNEL _____

REFERENCE NO. 61

SHEET 36 OF 41

NOTES Ripple

H.C. Barbour

R.C. Geyman

DATE 8-29-90

WEATHER Cloudy

TEMP. 78°

ROUTE 101

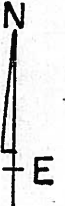
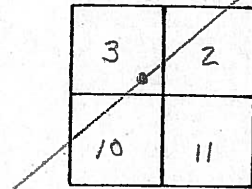
COUNTY Sen

TOWNSHIP Adams

SECTION 3

T 3 N R 16 E

TYPE MONUMENT set P.K. & Washer
 ON SURFACE - BELOW R/R spike 4" down
 LEFT-☉ PAV'T. - RIGHT ☉ RT. ↓
 TO EDGE PAVEMENT
 S.L.M. _____



720+97

STA. 211+

Loose Post

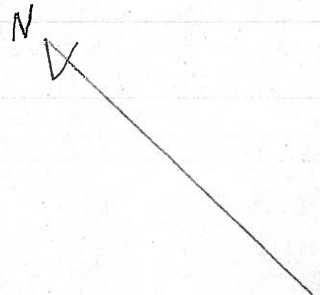
33.48

86.15

19.86

Measurements
may be inverted

Fd
2-2-05
SAH



O.D.O.T. DISTRICT 2 SURVEY OFFICE

PERSONNEL

REFERENCE NO. 61

SHEET 36 OF 41

NOTES Ripple

H.C. Barbour

DATE 8-29-90

ROUTE 101

R.C. Geyman

WEATHER Cloudy

COUNTY Sen

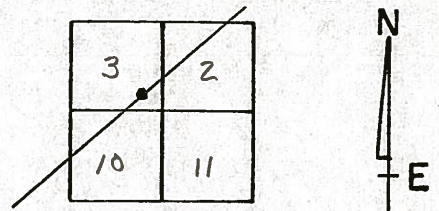
TEMP. 78°

TOWNSHIP Adams

SECTION 3

T 3 N R 16 E

TYPE MONUMENT set P.K. + Washer
 ON SURFACE - BELOW R/R Spike 4" down
 LEFT- & PAV'T. - RIGHT 1/2" RT. &
 _____ TO _____ EDGE PAVEMENT
 S.L.M. _____



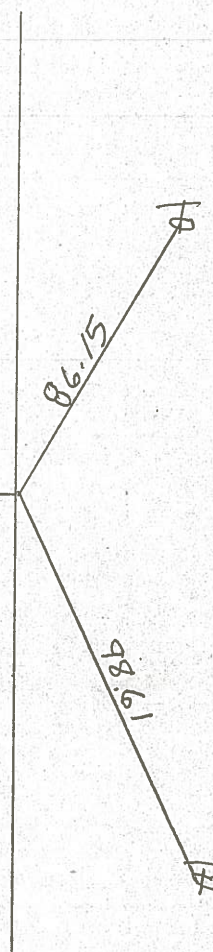
STA. 211+

Loose Post

33.48

86.15

98.61



PERSONNEL TITLE PERSONNEL TITLE

COUNTY SULLY DATE 11-25-63

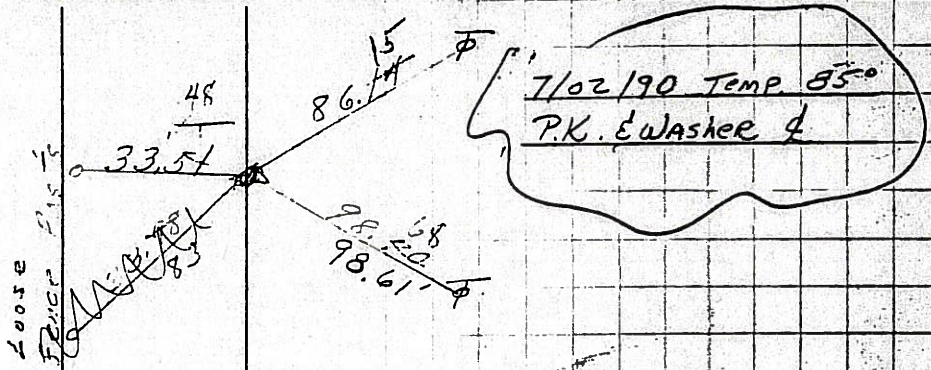
S. R. # 101 WEATHER

SEC TEMP

DESCRIPTION LEFT CENTER LINE RIGHT JOB NO.

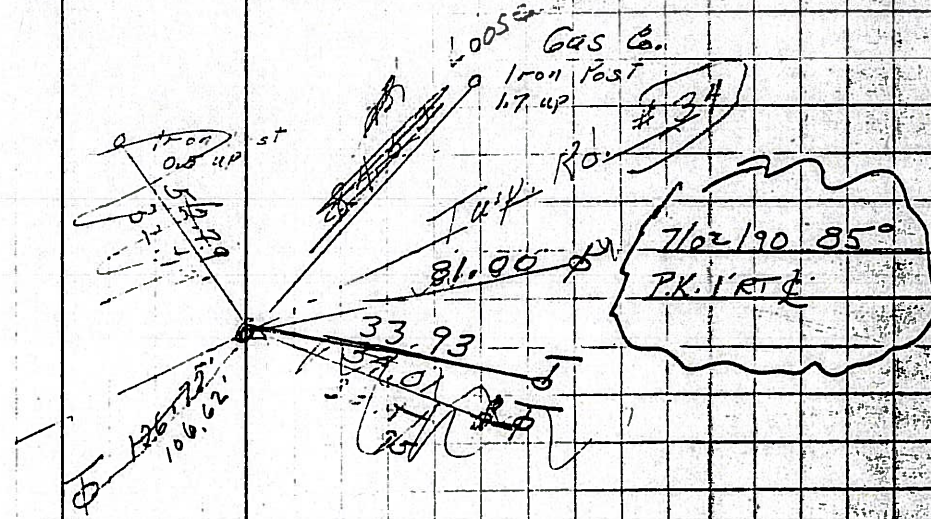
(61)

4-20-19
2/27/69
Sta. 211+00
R.R. sph. on & R/w
1/2" below surface
411



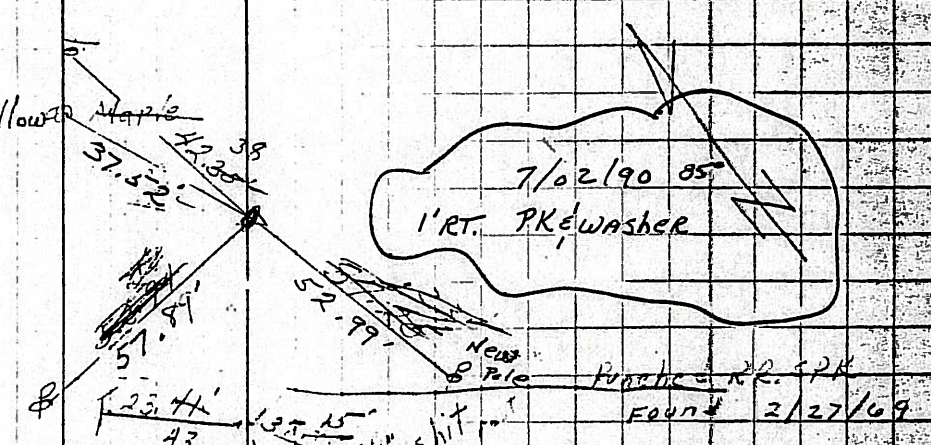
(60-A)

8508
Found
Sta. 192+00
R.R. sph. on & R/w
3" below surface
1' RT. &
411



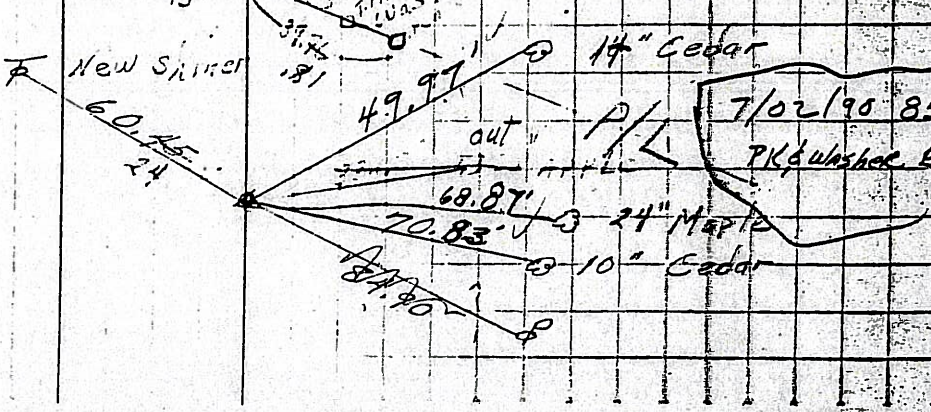
(59)

8507
Found 2/27/69
Sta. 181+00
R.R. sph. on & R/w
2" below surface
411



(58)

178+
688+05 8506
Sta. 175+00
R.R. sph. on & R/w
2" below surface
683+
411 8505



PERSONNEL TITLE PERSONNEL TITLE

COUNTY Seneca

DATE 2-14-64

Krabill

Kowaleska

S. R. # 101

WEATHER

Geyman

SEC

TEMP

Bruggeman

DESCRIPTION S. R. # 101 Tiffin to Sen. Co line

JOB NO.

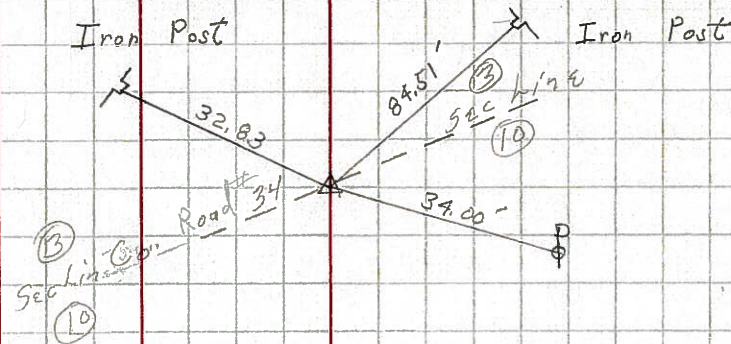
LEFT

CENTER LINE

RIGHT

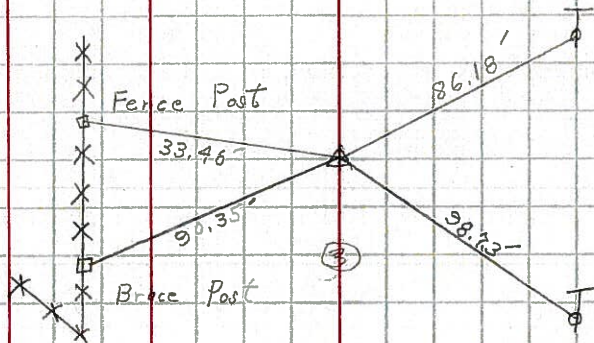
60-A

STA. 192+00
Iron Pin # 410



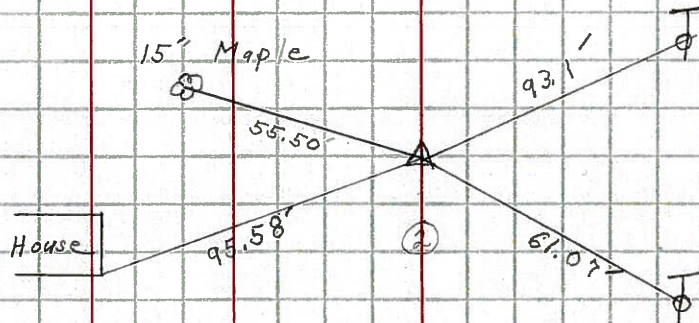
61

STA. 211+00
Iron Pin # 411



62

STA. 224+00
Iron Pin # 412



63

STA. 232+00
Iron Pin # 413

