

O.D.O.T. DISTRICT 2 SURVEY OFFICE (USE ONLY)

PERSONNEL

REFERENCE NO. 63

SHEET 43 OF 46

NOTES HOMAN

DATE 6-30-09

ROUTE SR 101

H.C. HOMAN

WEATHER CLOUDY

COUNTY SENECA

R.C. ROUSOS

TEMP. 75°F

TOWNSHIP ADAMS

DWG BY MAHLER PID 100787

SECTION 2

T 3 N R 16 E

TYPE MONUMENT IPIN

~~ON SURFACE~~ - BELOW 4"

OFFSET 0.5' ~~ET~~ : RT

- TO - EDGE PAVEMENT

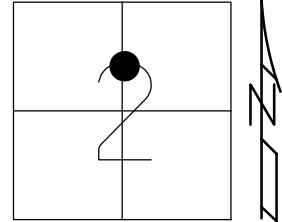
STATION: 742+00

HORIZ.DATUM: NAD83 (2011)

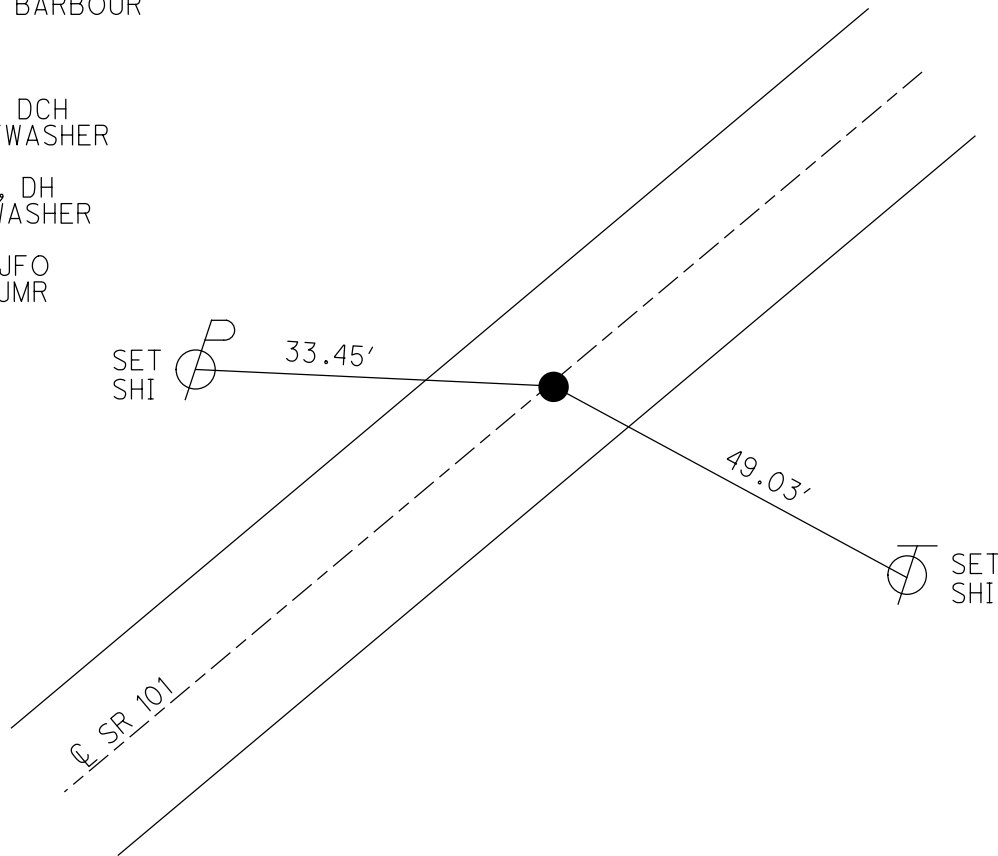
GEOID: NAVD88-2012A

GRID: NORTHING: 576880.385

EASTING: 1833540.368



RECORD:  
 STA. 232+00  
 FD IPIN  
 4" BELOW  
 SET P.K./WASHER  
 8/29/90, BARBOUR  
 FD IPIN  
 4" DOWN  
 REF63  
 6/30/09, DCH  
 SET MAG/WASHER  
 NEWREF63  
 10-07-09, DH  
 FD MAG/WASHER  
 REF63  
 6/16/16, JFO  
 9/12/17, JMR

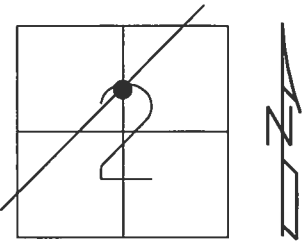


O.D.O.T. DISTRICT 2 SURVEY OFFICE (USE ONLY)

PERSONNEL \_\_\_\_\_ REFERENCE NO. 63 SHEET 43 OF 46

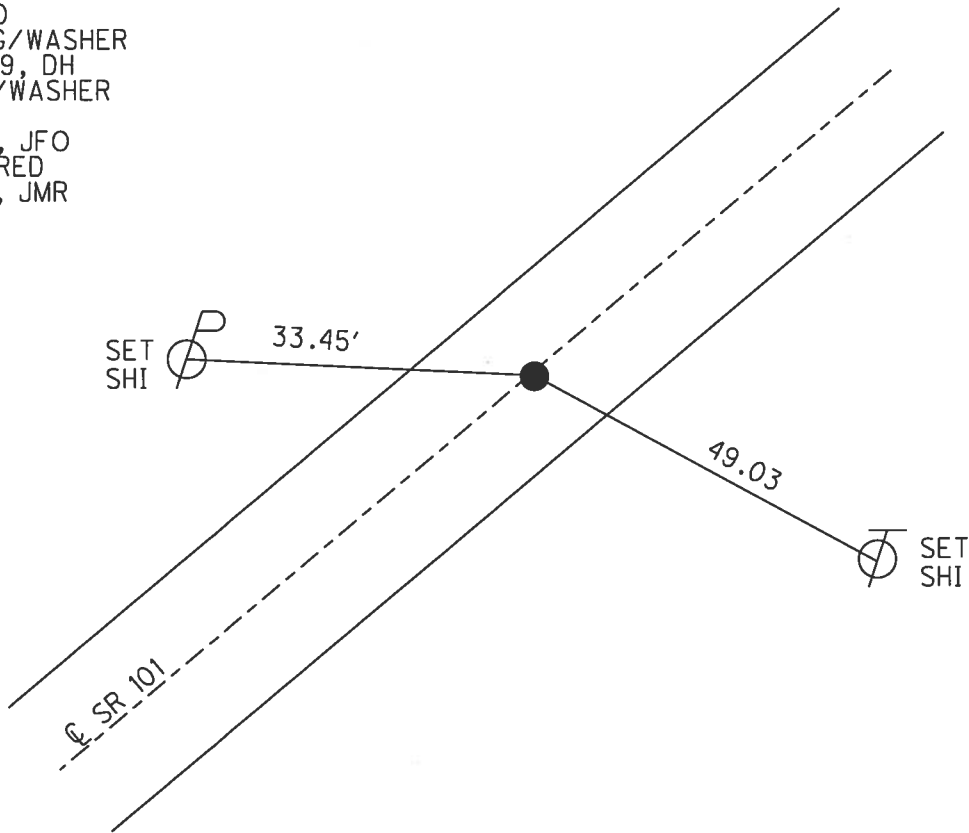
NOTES HOMAN \_\_\_\_\_ DATE 6/30/09 \_\_\_\_\_ ROUTE SR 101  
 H.C. HOMAN \_\_\_\_\_ WEATHER CLOUDY \_\_\_\_\_ COUNTY SENECA  
 R.C. ROUSOS \_\_\_\_\_ TEMP. 75° \_\_\_\_\_ TOWNSHIP ADAMS  
 \_\_\_\_\_ SECTION 2  
 \_\_\_\_\_ T 3 N R 16 E

TYPE MONUMENT IPIN  
~~ON SURFACE~~ - BELOW 4"  
~~LEFT~~ - Q PAV'T - RIGHT 0.5'  
 \_\_\_\_\_ TO \_\_\_\_\_ EDGE PAVEMENT  
 S.L.M. 742+00



GRID: NORTHING: 576880.385 EASTING: 1833540.368

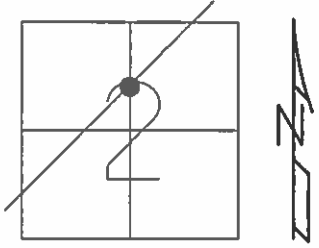
RECORD:  
 STA. 232+00  
 FD IPIN  
 4" BELOW  
 SET P.K./WASHER  
 8/29/90  
 SET MAG/WASHER  
 10-07-09, DH  
 FD MAG/WASHER  
 REF63  
 6/16/16, JFO  
 UNCOVERED  
 9/12/17, JMR



O.D.O.T. DISTRICT 2 SURVEY OFFICE (USE ONLY)

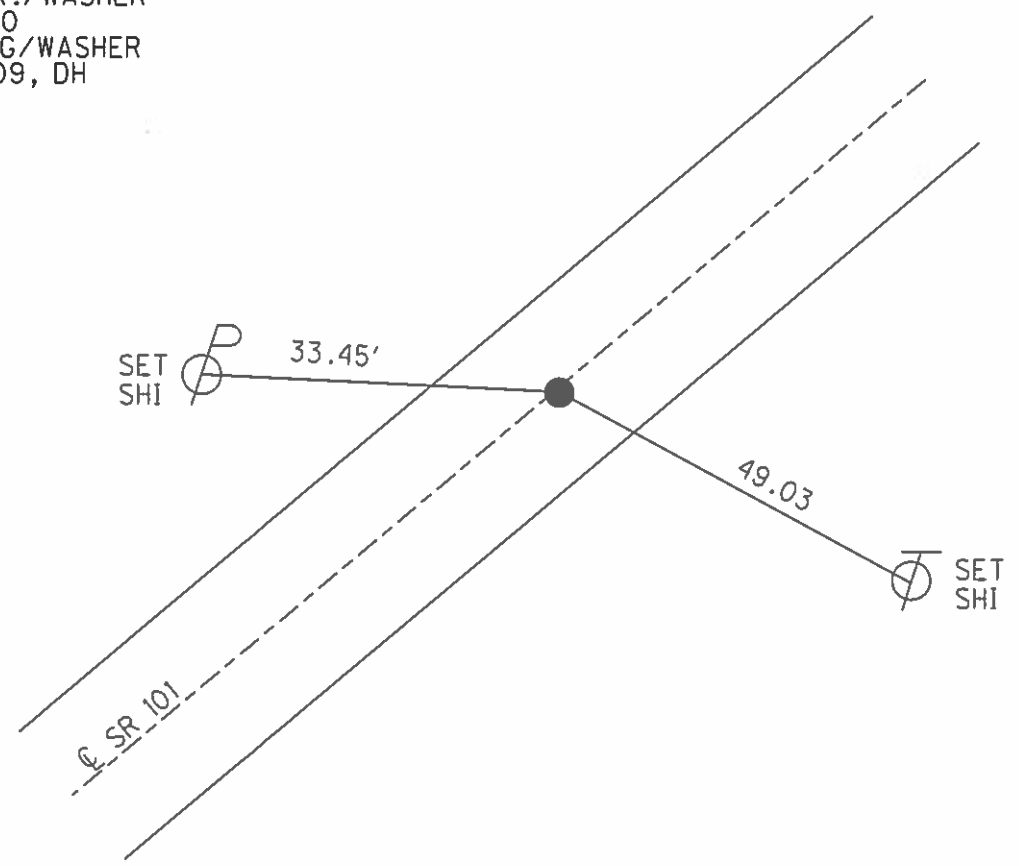
PERSONNEL \_\_\_\_\_ REFERENCE NO. 63 SHEET 43 OF 46  
 NOTES HOMAN \_\_\_\_\_ DATE 6/30/09 ROUTE SR 101  
 H.C. HOMAN \_\_\_\_\_ WEATHER CLOUDY COUNTY SENECA  
 R.C. ROUSOS \_\_\_\_\_ TEMP. 75° TOWNSHIP ADAMS  
 \_\_\_\_\_ SECTION 2  
 \_\_\_\_\_ T 3 N R 16 E

TYPE MONUMENT IPIN  
~~ON SURFACE~~ - BELOW 4"  
~~LEFT~~ -  $\odot$  PAV'T - RIGHT 0.5'  
 \_\_\_\_\_ TO \_\_\_\_\_ EDGE PAVEMENT  
 S.L.M. 742+00



GRID: NORTHING: 576880.460 EASTING: 1833540.285

RECORD:  
 STA. 232+00  
 FD IPIN  
 4" BELOW  
 SET P.K./WASHER  
 8/29/90  
 SET MAG/WASHER  
 10-07-09, DH



O.D.O.T. DISTRICT 2 SURVEY OFFICE

PERSONNEL

REFERENCE NO. 63

SHEET 38 OF 41

NOTES Ripple

H.C. BARBOUR

R.C. SEYMAN

DATE 8-29-90

WEATHER Cloudy

TEMP. 77°

ROUTE 101

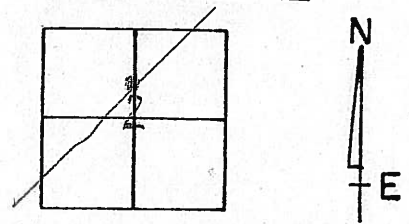
COUNTY SN

TOWNSHIP Adams

SECTION 2

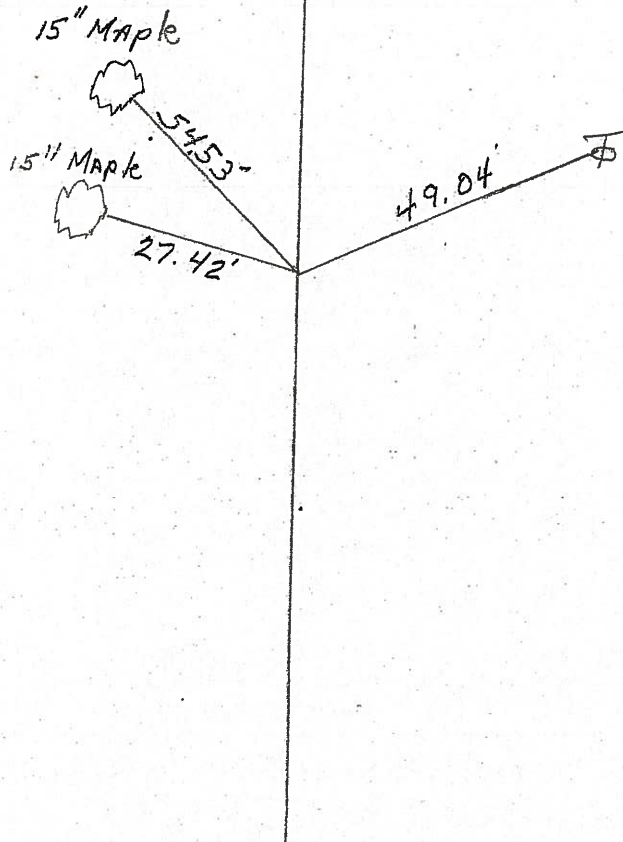
T 3 N R 16 E

TYPE MONUMENT SET PK + WASHER  
ON SURFACE - BELOW IRON PIN 4" below  
LEFT - ¢ PAW'T. - RIGHT ½' RT.  
\_\_\_\_ TO \_\_\_\_ EDGE PAVEMENT  
S.L.M. \_\_\_\_\_



742+00

STA. 232+00



Fd note  
Need to Dig  
2-7-06  
SAH

O.D.O.T. DISTRICT 2 SURVEY OFFICE

PERSONNEL

REFERENCE NO. 63

SHEET 38 OF 41

NOTES Ripple

H.C. BARBOUR

DATE 8-29-90

ROUTE 101

R.C. SEYMAN

WEATHER Cloudy

COUNTY SEN

TEMP. 77°

TOWNSHIP Adams

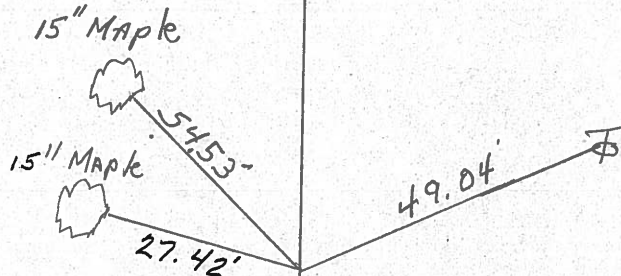
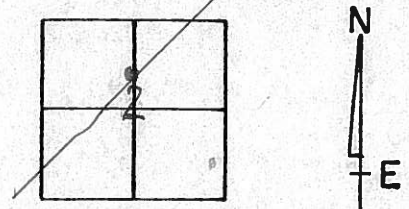
SECTION 2

T 3 N R 16 E

TYPE MONUMENT Set PK & Washer  
ON SURFACE - BELOW IRON PIN 4" below  
LEFT - & PAV'T. - RIGHT 1/2' RT.

TO EDGE PAVEMENT

S.L.M. \_\_\_\_\_



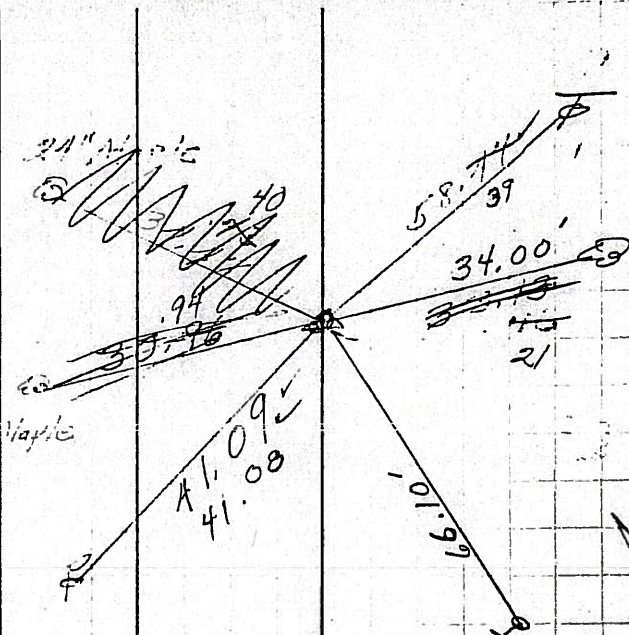
STA. 232+00

PERSONNEL	TITLE	PERSONNEL	TITLE

COUNTY San Diego DATE 11-26-65  
 S. R. # 101 WEATHER 79  
 SEC. \_\_\_\_\_ TEMP 4' 3 70

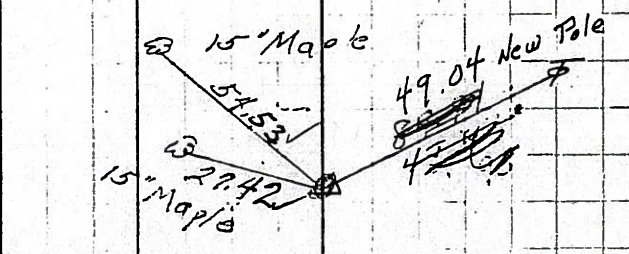
DESCRIPTION LEFT CENTER LINE RIGHT JOB NO.

**(64)**  
 Found 7/1/69  
 Sta. 229+00  
 R.R. sp. of ...  
1/2" below surface  
759+  
44  
8511



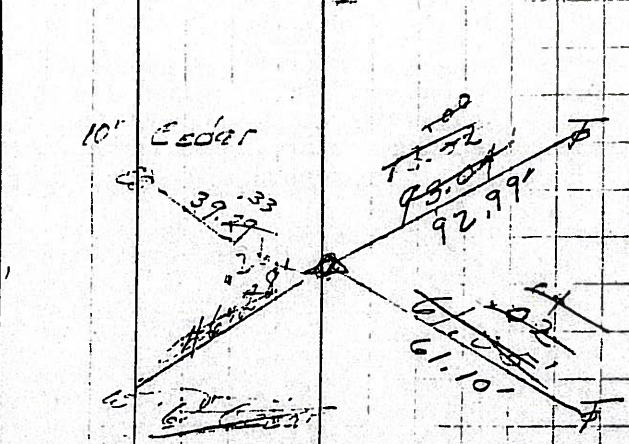
7/02/90 85°  
1' LT & P.K. & washer  
15' Hedge apple

**(63)**  
 Found 5/8/69  
 Sta. 232+00  
 Iron pin out of ...  
4" below surface  
44  
8510



7/02/90 85°  
PK & washer &

**(62)**  
 Found 8/3/69  
 Sta. 224+00  
 R.R. sp. of ...  
1/2" below surface  
733+99  
44  
8509



7/02/90 85°  
1' LT & PK & washer

PERSONNEL TITLE PERSONNEL TITLE

COUNTY Seneca

DATE 2-14-64

Krabill

Kowalesko

S. R. # 101

WEATHER

Geyman

SEC.

TEMP.

Bruggeman

DESCRIPTION S. R. # 101 Tiffin to Sen. Co line

JOB NO.

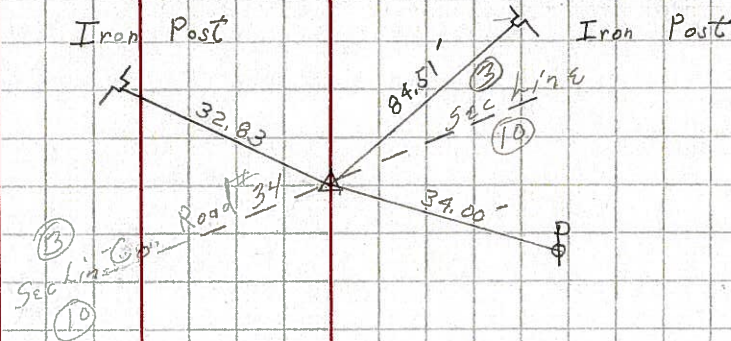
LEFT

CENTER LINE

RIGHT

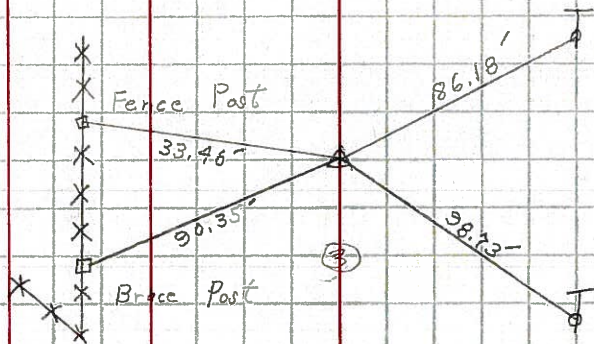
60-A

STA. 192+00  
Iron Pin # 410



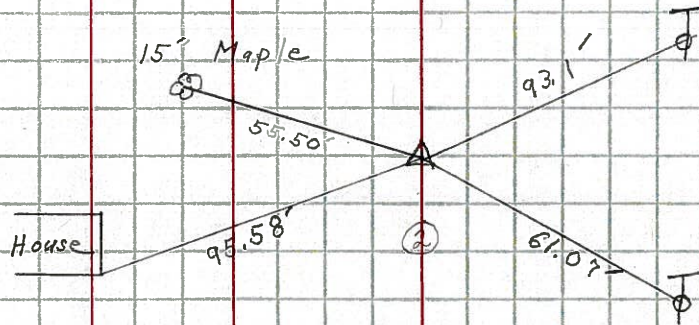
61

STA. 211+00  
Iron Pin # 411



62

STA. 224+00  
Iron Pin # 412



63

STA. 232+00  
Iron Pin # 413

