

O.D.O.T. DISTRICT 2 SURVEY OFFICE (USE ONLY)

PERSONNEL _____

REFERENCE NO. 64

SHEET 44 OF 46

NOTES HOMAN

DATE 6-30-09

ROUTE SR 101

H.C. HOMAN

WEATHER CLOUDY

COUNTY SENECA

R.C. ROUSOS

TEMP. 70°F

TOWNSHIP ADAMS

SECTION 2

DWG BY MAHLER

PID 100787

T 3 N R 16 E

TYPE MONUMENT P.K./WASHER

ON SURFACE - ~~BELOW~~ ON

OFFSET ☉ PAVEMENT 1' LT : RT

- TO - EDGE PAVEMENT

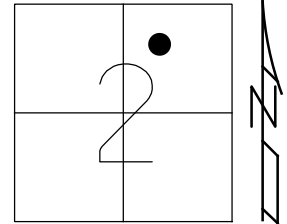
STATION: 759+04

HORZ.DATUM: NAD83 (2011)

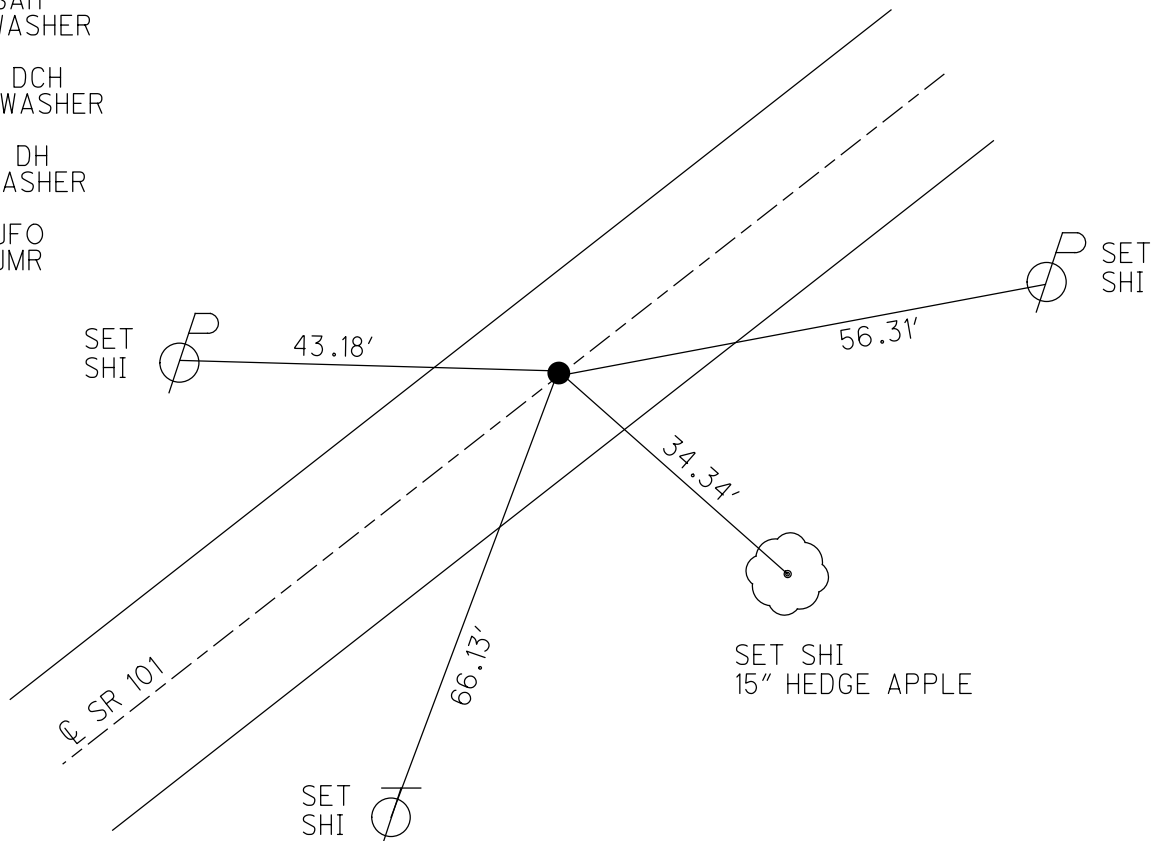
GEOID: NAVD88-2012A

GRID: NORTHING: 577979.460

EASTING: 1834840.408



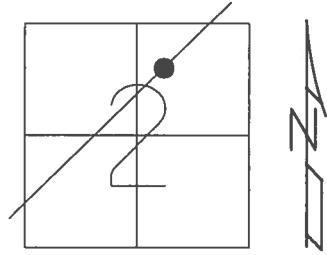
RECORD:
 STA. 759+04
 FD R.R. SPIKE
 4" DOWN
 SET P.K./WASHER
 8/29/90, BARBOUR
 FD P.K./WASHER
 2/7/05, SAH
 FD P.K./WASHER
 REF64
 6/30/09, DCH
 SET MAG/WASHER
 NEWREF64
 10-07-09, DH
 FD MAG/WASHER
 REF64
 6/16/16, JFO
 9/12/17, JMR



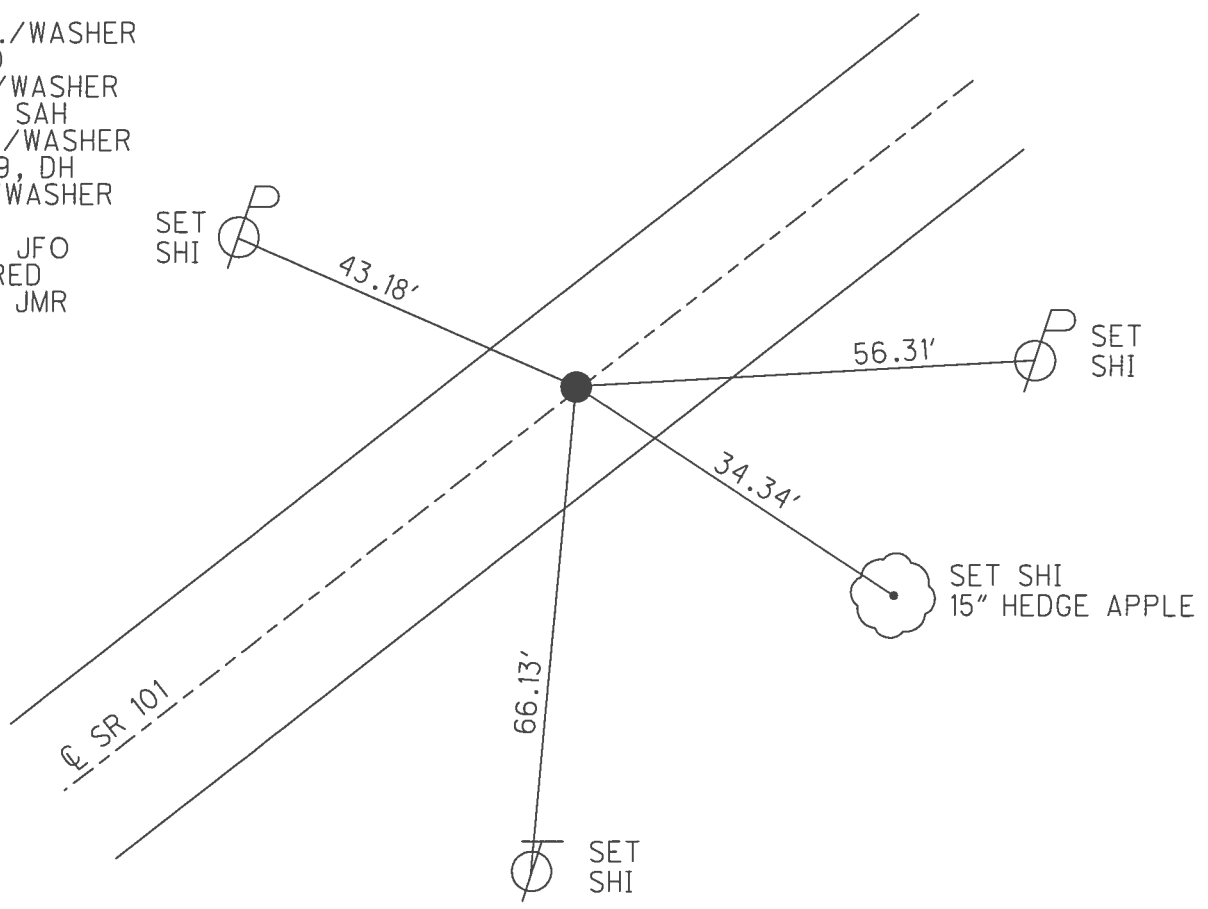
O.D.O.T. DISTRICT 2 SURVEY OFFICE (USE ONLY)

PERSONNEL	REFERENCE NO.	<u>64</u>	SHEET	<u>44</u>	OF	<u>46</u>
NOTES	HOMAN	DATE	<u>6/30/09</u>	ROUTE	<u>SR 101</u>	
H.C.	HOMAN	WEATHER	<u>CLOUDY</u>	COUNTY	<u>SENECA</u>	
R.C.	ROUSOS	TEMP.	<u>70°</u>	TOWNSHIP	<u>ADAMS</u>	
				SECTION	<u>2</u>	
				T	<u>3</u>	N
				R	<u>16</u>	E

TYPE MONUMENT P.K./WASHER
~~ON SURFACE~~ - BELOW ON
 LEFT - ☉ PAV'T - ~~RIGHT~~ 1 1/2'
- TO - EDGE PAVEMENT
 S.L.M. 759+04
 GRID: NORTHING: 577979.460 EASTING: 1834840.408



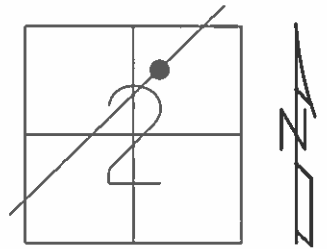
RECORD:
 STA. 759+04
 FD R.R. SPIKE
 4" DOWN
 SET P.K./WASHER
 8/29/90
 FD P.K./WASHER
 2/7/05, SAH
 SET MAG/WASHER
 10-07-09, DH
 FD MAG/WASHER
 REF64
 6/16/16, JFO
 UNCOVERED
 9/12/17, JMR



O.D.O.T. DISTRICT 2 SURVEY OFFICE (USE ONLY)

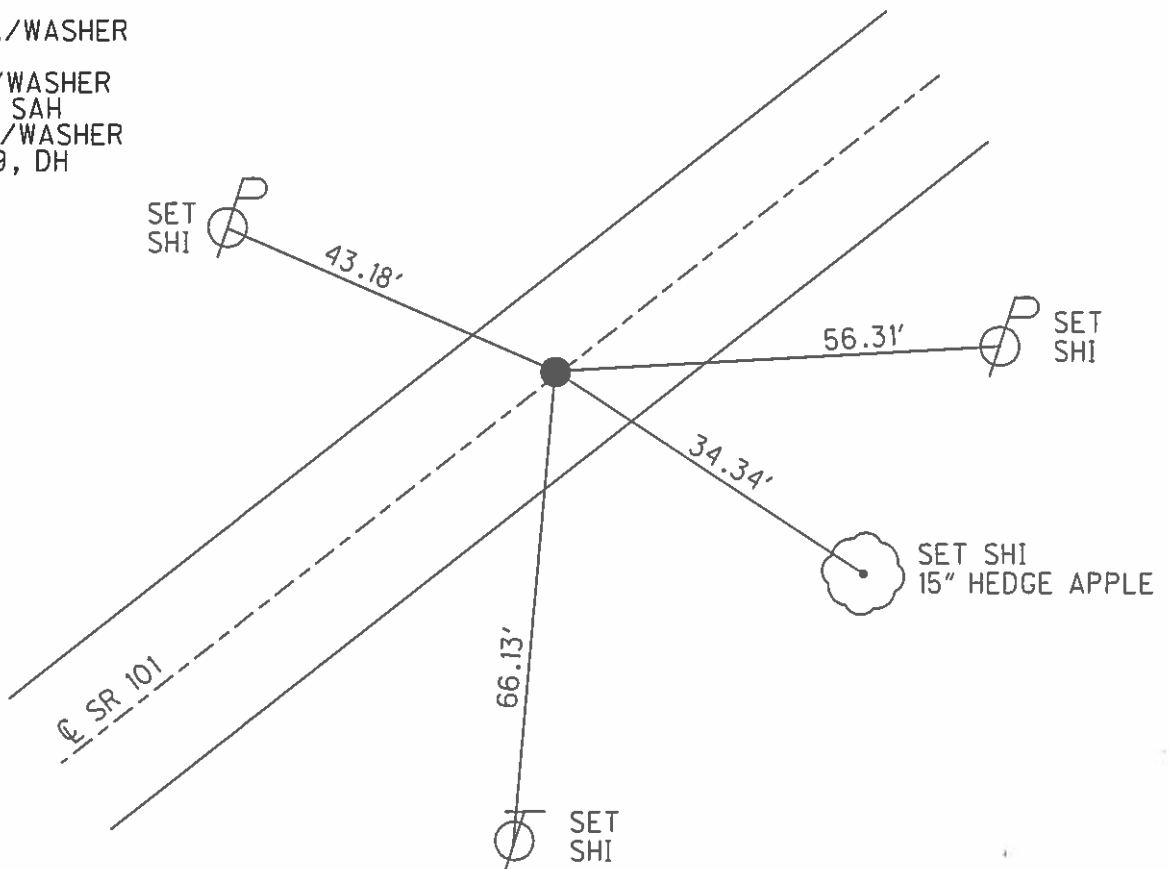
PERSONNEL	REFERENCE NO.	<u>64</u>	SHEET	<u>44</u>	OF	<u>46</u>
NOTES	HOMAN	DATE	<u>6/30/09</u>	ROUTE	<u>SR 101</u>	
H.C.	HOMAN	WEATHER	<u>CLOUDY</u>	COUNTY	<u>SENECA</u>	
R.C.	ROUSOS	TEMP.	<u>70°</u>	TOWNSHIP	<u>ADAMS</u>	
				SECTION	<u>2</u>	
				T	<u>3</u>	R
					<u>N</u>	<u>16</u>
					<u>E</u>	

TYPE MONUMENT P.K./WASHER
~~ON SURFACE~~ - BELOW ON
 LEFT - ☉ PAV'T - ~~RIGHT~~ 1'
- TO - EDGE PAVEMENT
 S.L.M. 759+04



GRID: NORTHING: 577979.515 EASTING: 1834840.410

RECORD:
 STA. 759+04
 FD R.R. SPIKE
 4" DOWN
 SET P.K./WASHER
 8/29/90
 FD P.K./WASHER
 2/7/05, SAH
 SET MAG/WASHER
 10-07-09, DH



O.D.O.T. DISTRICT 2 SURVEY OFFICE

PERSONNEL

REFERENCE NO. 64

SHEET 39 OF 41

NOTES Ripple

H.C. Barbour

DATE 8-29-90

ROUTE 101

R.C. Geyman

WEATHER Cloudy

COUNTY Sen.

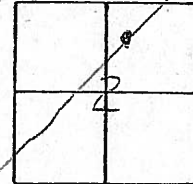
TEMP. 78°

TOWNSHIP Adams

SECTION 2

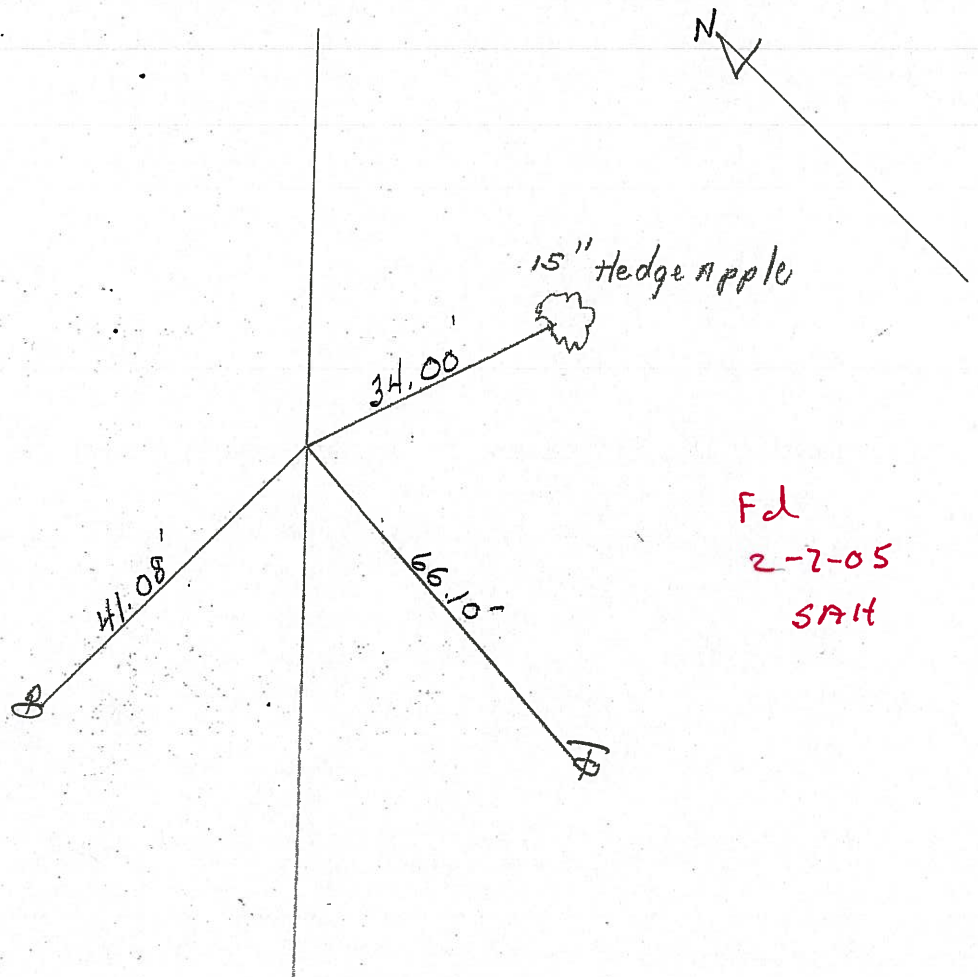
T 3 N R 16 E

TYPE MONUMENT Set P.K. + Washer
ON SURFACE - BELOW R/R spike 4" down
LEFT - € PAV'T. - RIGHT 1 LT.
____ TO ____ EDGE PAVEMENT
S.L.M. _____



759+04

STA. 249+00



Fd
2-7-05
SAH

O.D.O.T. DISTRICT 2 SURVEY OFFICE

PERSONNEL

REFERENCE NO. 64

SHEET 39 OF 41

NOTES Ripple

H.C. Barbour

DATE 8-29-90

ROUTE 101

R.C. Geyman

WEATHER Cloudy

COUNTY Sen.

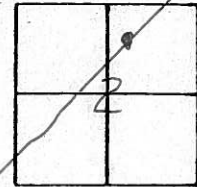
TEMP. 78°

TOWNSHIP Adams

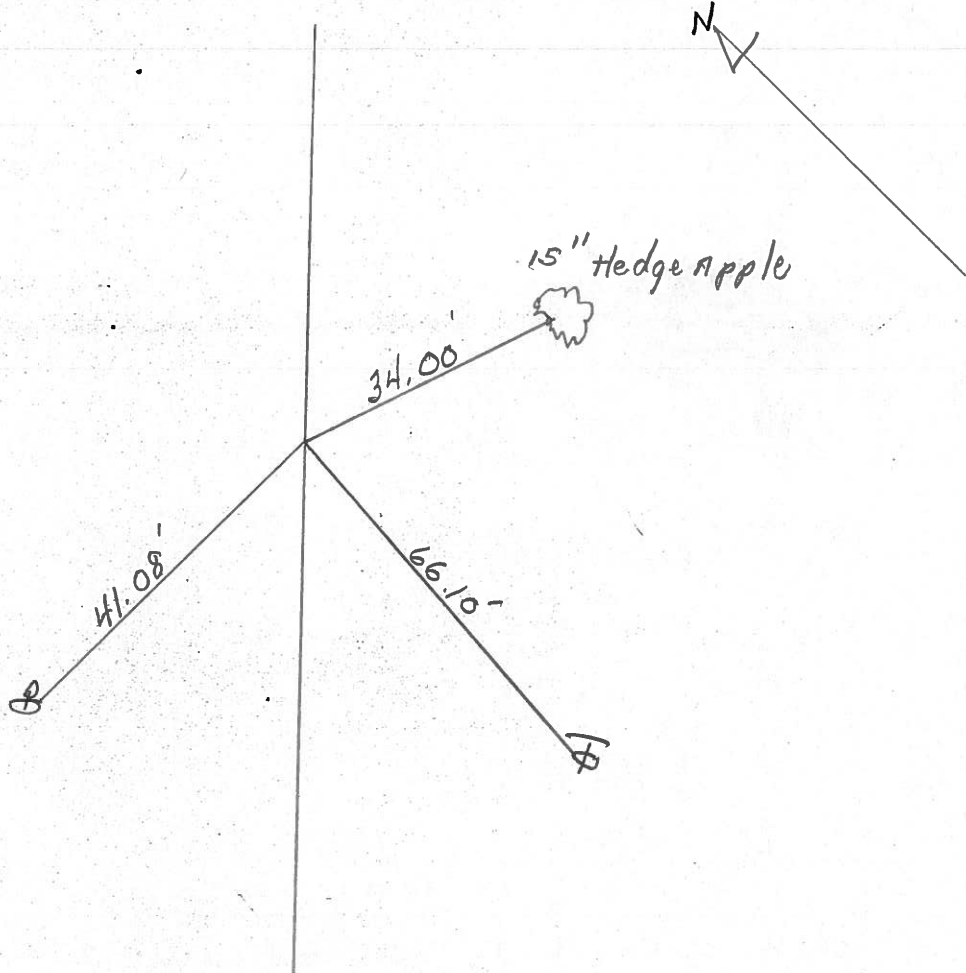
SECTION 2

T 3 N R 16 E

TYPE MONUMENT Set P.K. + Washer
ON SURFACE - BELOW R/R spike 4" down
LEFT - € PAV'T. - RIGHT 1 Lt.
TO EDGE PAVEMENT
S.L.M. _____



STA. 249+00



PERSONNEL	TITLE	PERSONNEL	TITLE

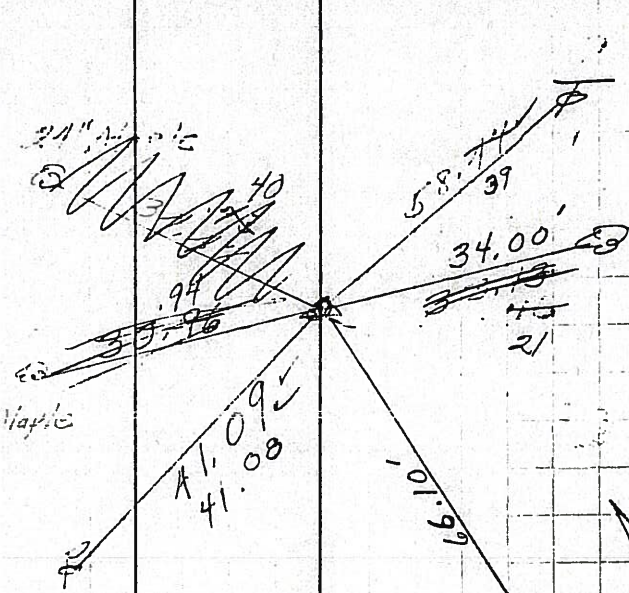
COUNTY Seneca DATE 11-26-65

S. R. # 101 WEATHER 79

SEC. _____ TEMP 4-3 70

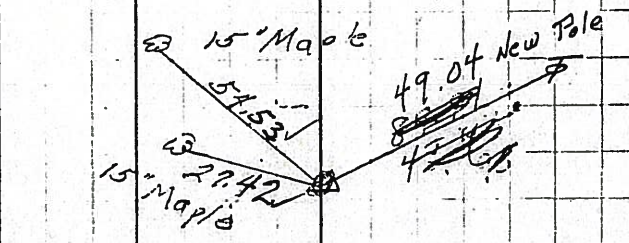
DESCRIPTION LEFT CENTER LINE RIGHT JOB NO.

(64) Found 7/1/69
Sta. 249+00
R.R. spike on E. side
1/2" below surface
759+
#11
8511



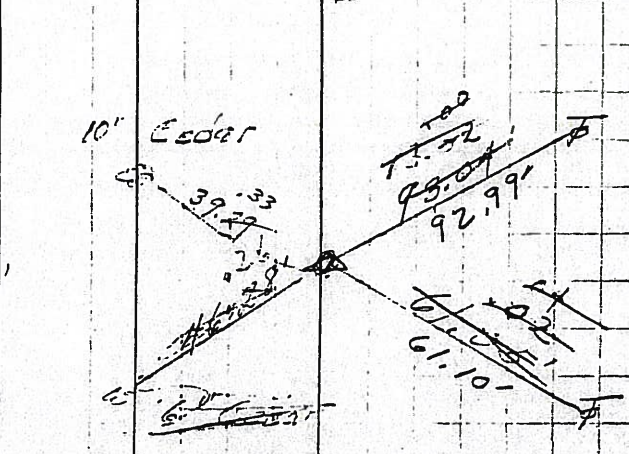
7/02/90 85°
1' LT & P.K. & washer
15" Hedge apple

(63) Found 5/8/69
Sta. 252+00
Iron spike on E. side
4" below surface
#11
8510



7/02/90 85°
PK & washer &

(62) Found 8/1/69
Sta. 224+00
R.R. spike on E. side
1/2" below surface
733+99
#12
8509



7/02/90 85°
1' LT & PK & washer

PERSONNEL TITLE PERSONNEL TITLE

COUNTY Seneca DATE 2-14-64

Krabill

Kowaleski

Geyman

Bruggeman

S. R. # 101

WEATHER

SEC.

TEMP.

DESCRIPTION S.R. # 101 Tiffin to San. Co. Line

JOB NO.

LEFT

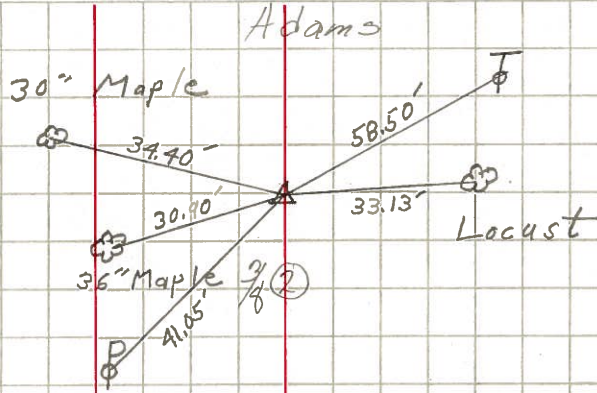
CENTER LINE

RIGHT

64

STA. 249+00

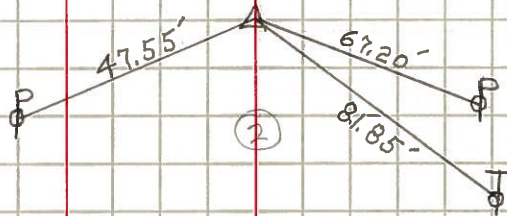
Iron Pin # 414



65

STA. 259+00

Iron Pin # 415



STA. 272+14.70

Iron Pin

San. - Seneca Co. Line # 416

