

O.D.O.T. DISTRICT 2 SURVEY OFFICE (USE ONLY)

PERSONNEL

REFERENCE NO. 66

SHEET 46 OF 46

NOTES RHOADES

DATE 3-28-17

ROUTE SR 101

H.C. O'DONNELL

WEATHER CLOUDY

COUNTY SENECA

R.C. RHOADES

TEMP. 43°F

TOWNSHIP ADAMS

DWG BY MAHLER PID 100787

SECTION 2

T 3 N R 16 E

TYPE MONUMENT 5/8" IPIN

~~ON SURFACE~~ - BELOW 6.5"

OFFSET  $\odot$  PAVEMENT 10.5' LT : ~~RT~~

- TO - EDGE PAVEMENT

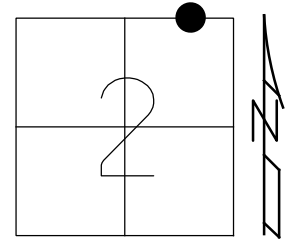
STATION: 782+25

HORIZ.DATUM: NAD83 (2011)

GEOID: NAVD88-2012A

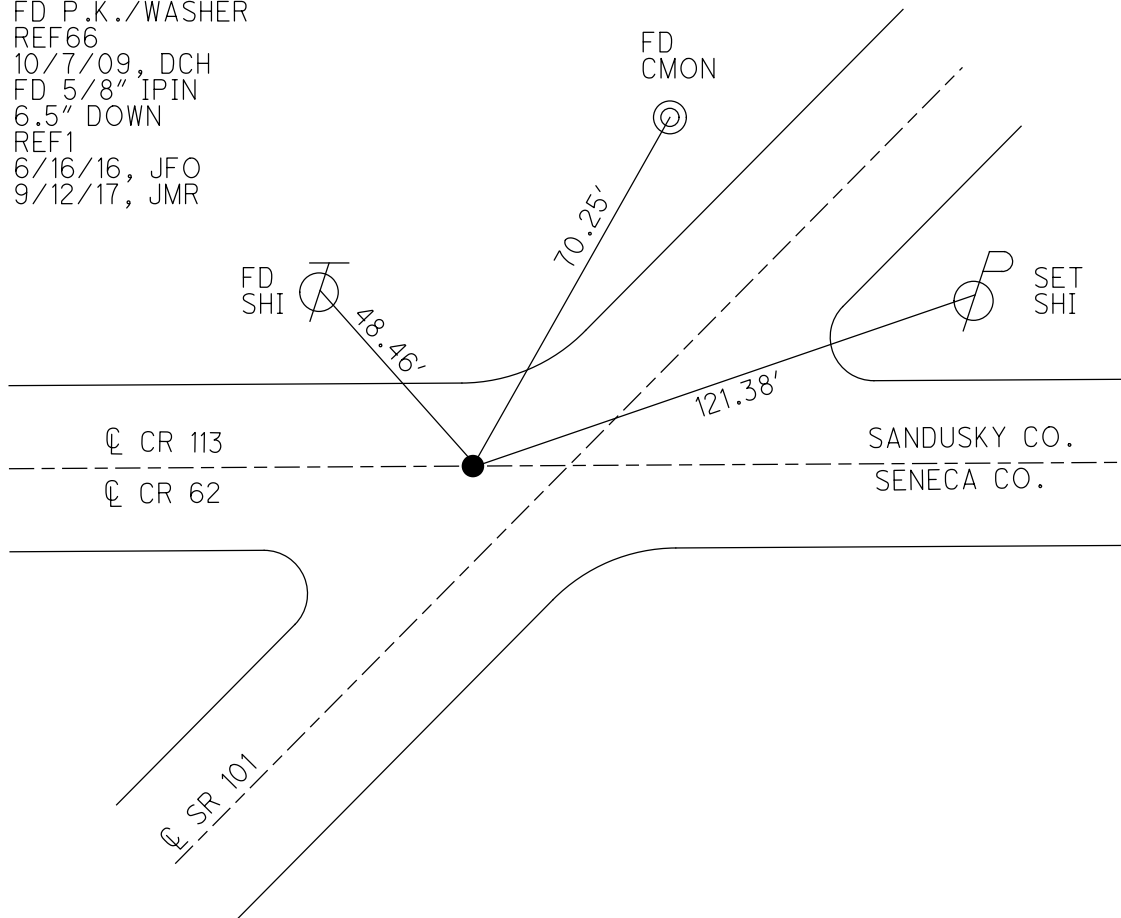
GRID: NORTHING: 579407.932

EASTING: 1836662.427



RECORD: P.I.  
 STA. 782+00  
 FD IPIN  
 5" DOWN  
 SET P.K./WASHER  
 10/1/92, BARBOUR  
 FD P.K./WASHER  
 REF66  
 10/7/09, DCH  
 FD 5/8" IPIN  
 6.5" DOWN  
 REF1  
 6/16/16, JFO  
 9/12/17, JMR

NOTE: SAN 101 REF 1

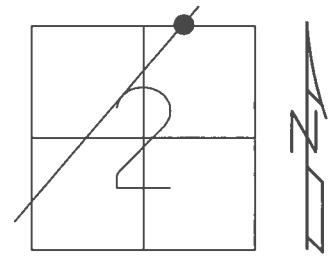


O.D.O.T. DISTRICT 2 SURVEY OFFICE (USE ONLY)

PERSONNEL \_\_\_\_\_ REFERENCE NO. 66 SHEET 46 OF 46

NOTES RHOADES \_\_\_\_\_ DATE 3/28/17 ROUTE SR 101  
 H.C. O'DONNELL \_\_\_\_\_ WEATHER CLOUDY COUNTY SENECA  
 R.C. HELDMAN \_\_\_\_\_ TEMP. 43° TOWNSHIP ADAMS  
 \_\_\_\_\_ SECTION 2  
 \_\_\_\_\_ T 3 N R 16 E

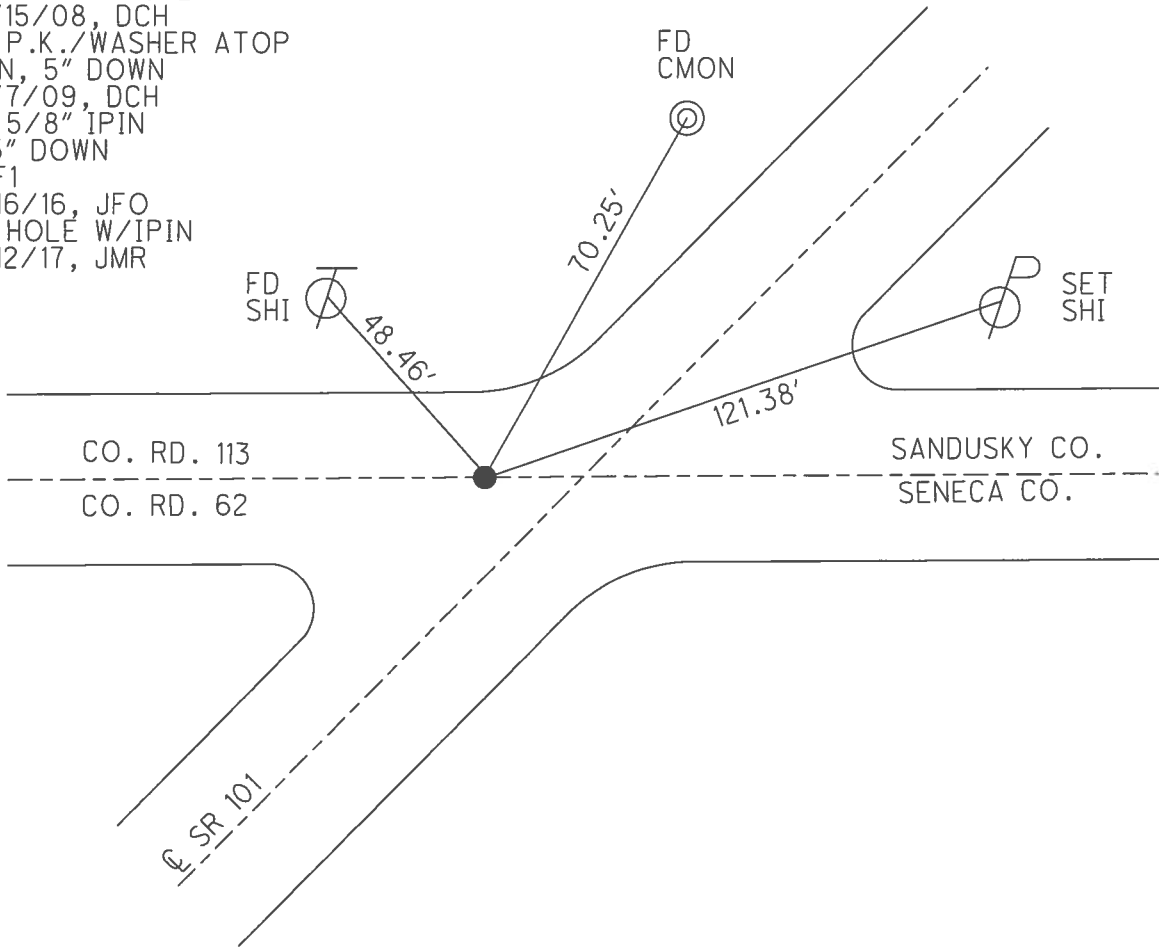
TYPE MONUMENT 5/8" IPIN  
~~ON SURFACE~~ - BELOW 6.5"  
 LEFT - ☉ PAV'T - ~~RIGHT~~ 10.5'  
 \_\_\_\_\_ - \_\_\_\_\_ TO \_\_\_\_\_ EDGE PAVEMENT  
 S.L.M. 782+25



GRID: NORTHING: 579407.932 EASTING: 1836662.427

NOTE: REF 1 SAN CO.

RECORD:  
 P.I. STA. 782+00  
 FD IPIN  
 5" DOWN  
 SET P.K./WASHER  
 10/1/92  
 SET MAG/WASHER  
 10/15/08, DCH  
 FD P.K./WASHER ATOP  
 IPIN, 5" DOWN  
 10/7/09, DCH  
 FD 5/8" IPIN  
 6.5" DOWN  
 REF1  
 6/16/16, JFO  
 FD HOLE W/IPIN  
 9/12/17, JMR



O.D.O.T. DISTRICT 2 SURVEY OFFICE (USE ONLY)

PERSONNEL \_\_\_\_\_ REFERENCE NO. 66 SHEET 46 OF 46  
 NOTES HOMAN \_\_\_\_\_ DATE 10/07/09 ROUTE SR 101  
 H.C. HOMAN \_\_\_\_\_ WEATHER CLOUDY COUNTY SENECA  
 R.C. ROUSOS \_\_\_\_\_ TEMP. 70° TOWNSHIP ADAMS  
 \_\_\_\_\_ SECTION 2  
 \_\_\_\_\_ T 3 N R 16 E

TYPE MONUMENT P.K./WASHER

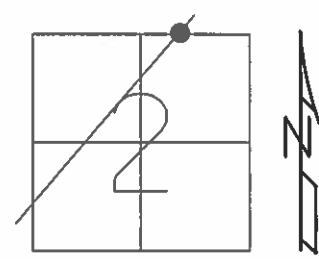
~~ON SURFACE~~ - BELOW ON

LEFT -  $\odot$  PAV'T - ~~RIGHT~~ 10"

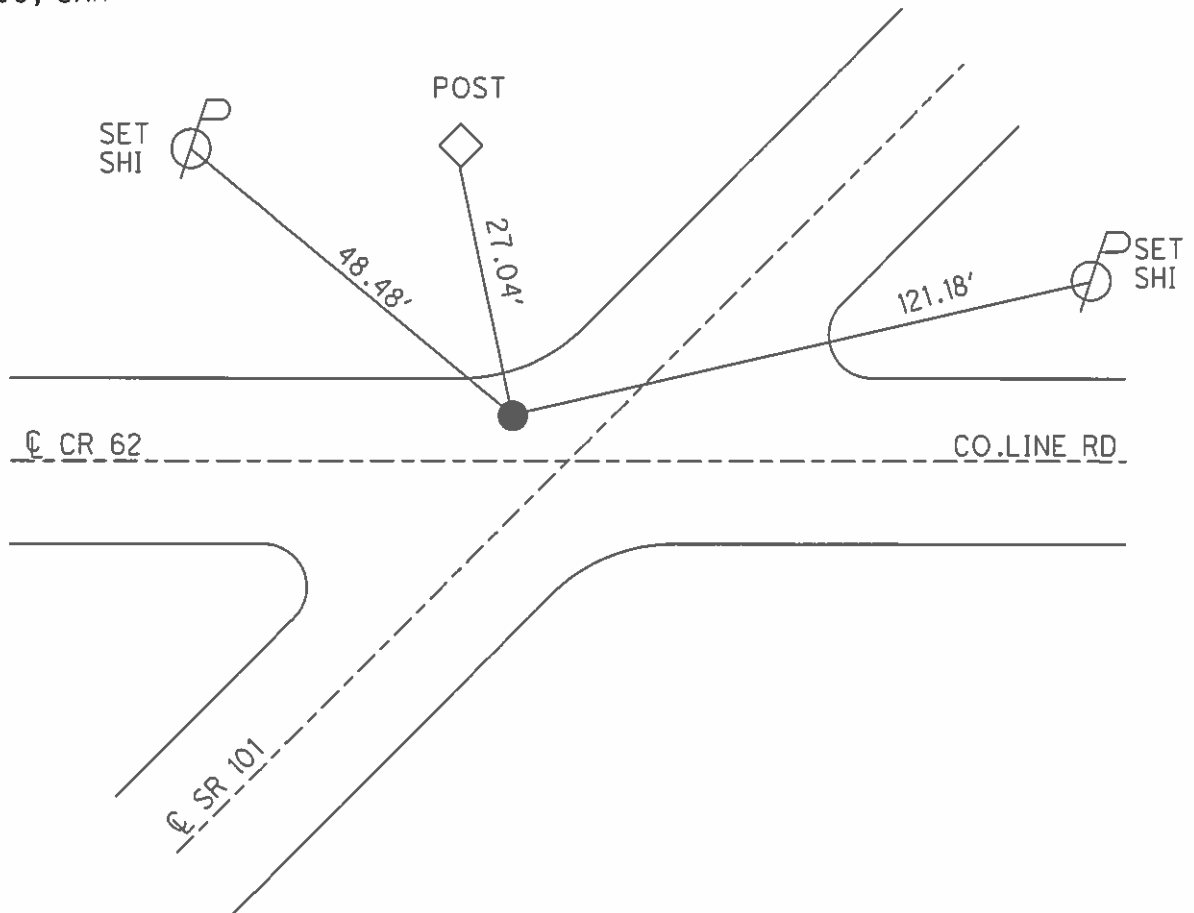
- TO - EDGE PAVEMENT

S.L.M. 782+25

GRID: NORTHING: 550346.310 EASTING: 1805897.663



RECORD:  
 STA. 782+24  
 FD IPIN  
 5" DOWN  
 SET P.K./WASHER  
 8/29/90  
 FD P.K./WASHER  
 2/7/05, SAH



# O.D.O.T. DISTRICT 2 SURVEY OFFICE

PERSONNEL \_\_\_\_\_

REFERENCE NO. 66

SHEET 41 OF 41

NOTES Ripple

H.C. BARBOUR

DATE 8-29-90

ROUTE 101

R.C. GEYMAN

WEATHER Cloudy

COUNTY SEN

TEMP. 80°

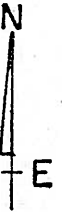
TOWNSHIP ADAMS

SECTION 2

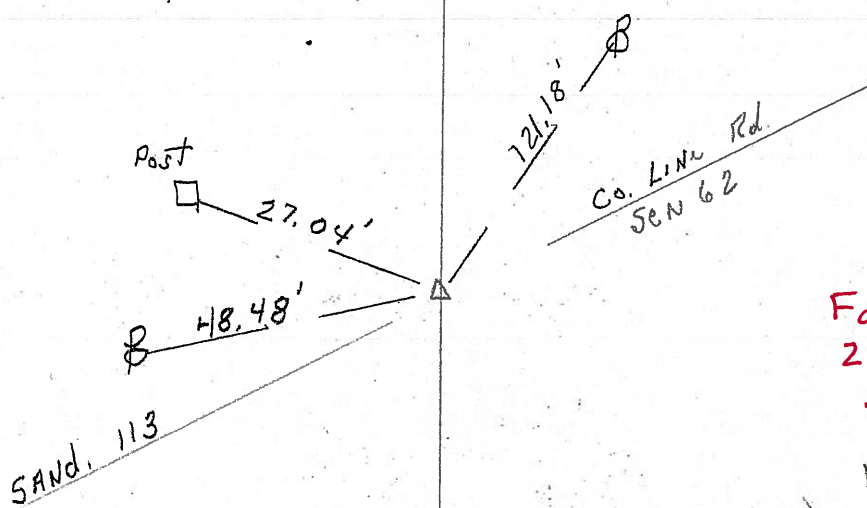
T3 N R 16 E

TYPE MONUMENT P.K. & WASHER TOP  
 ON SURFACE - BELOW 5" DOWN I. PIN  
 LEFT - PAV'T. - RIGHT 10' LT.  
 TO EDGE PAVEMENT  
 S.L.M. \_\_\_\_\_

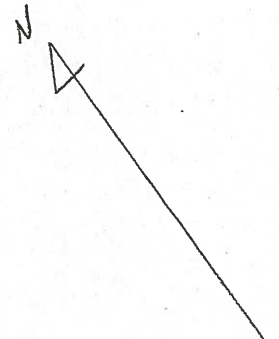
3	2
10	11



782+25



Fd  
2-7-05  
SAH



STA. 782+

# O.D.O.T. DISTRICT 2 SURVEY OFFICE

PERSONNEL \_\_\_\_\_

REFERENCE NO. 66

SHEET 41 OF 41

NOTES Ripple

H.C. BARBOUR

DATE 8-29-90

ROUTE 101

R.C. GEYMAN

WEATHER Cloudy

COUNTY SEN

TEMP. 80°

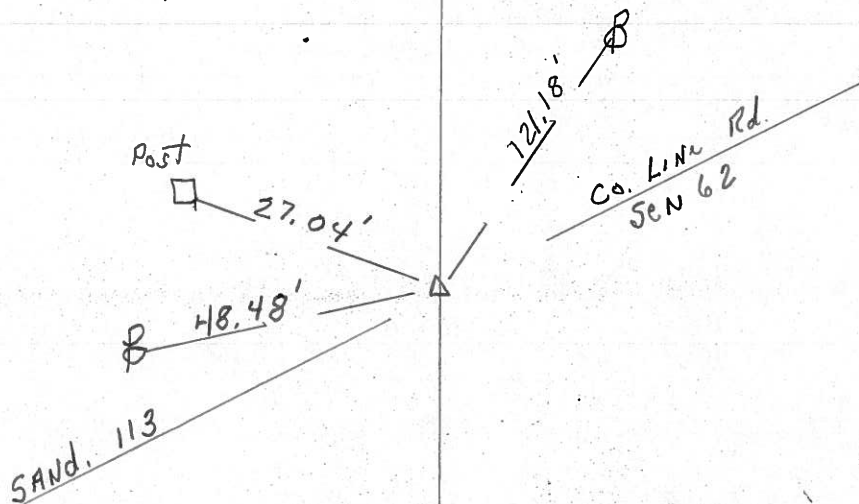
TOWNSHIP ADAMS

SECTION 2

T. 3 N. R. 16 E.

TYPE MONUMENT P.K. & WASHER TOP  
 ON SURFACE - BELOW 5" DOWN I. PIN  
 LEFT - & PAV'T. - RIGHT 10' LT.  
 TO \_\_\_\_\_ EDGE PAVEMENT  
 S.L.M. \_\_\_\_\_

3	2
10	11



STA. 782+

