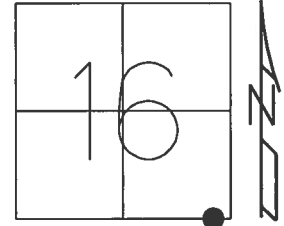


O.D.O.T. DISTRICT 2 SURVEY OFFICE (USE ONLY)

PERSONNEL _____ REFERENCE NO. 1 SHEET 1 OF 32
 NOTES RHOADES DATE 8/1/17 ROUTE SR 162
 H.C. HOMAN WEATHER SUNNY COUNTY SENECA
 R.C. CARSON TEMP. 70° TOWNSHIP SCIPIO
POORE SECTION 16
 T 2 N R 16 E

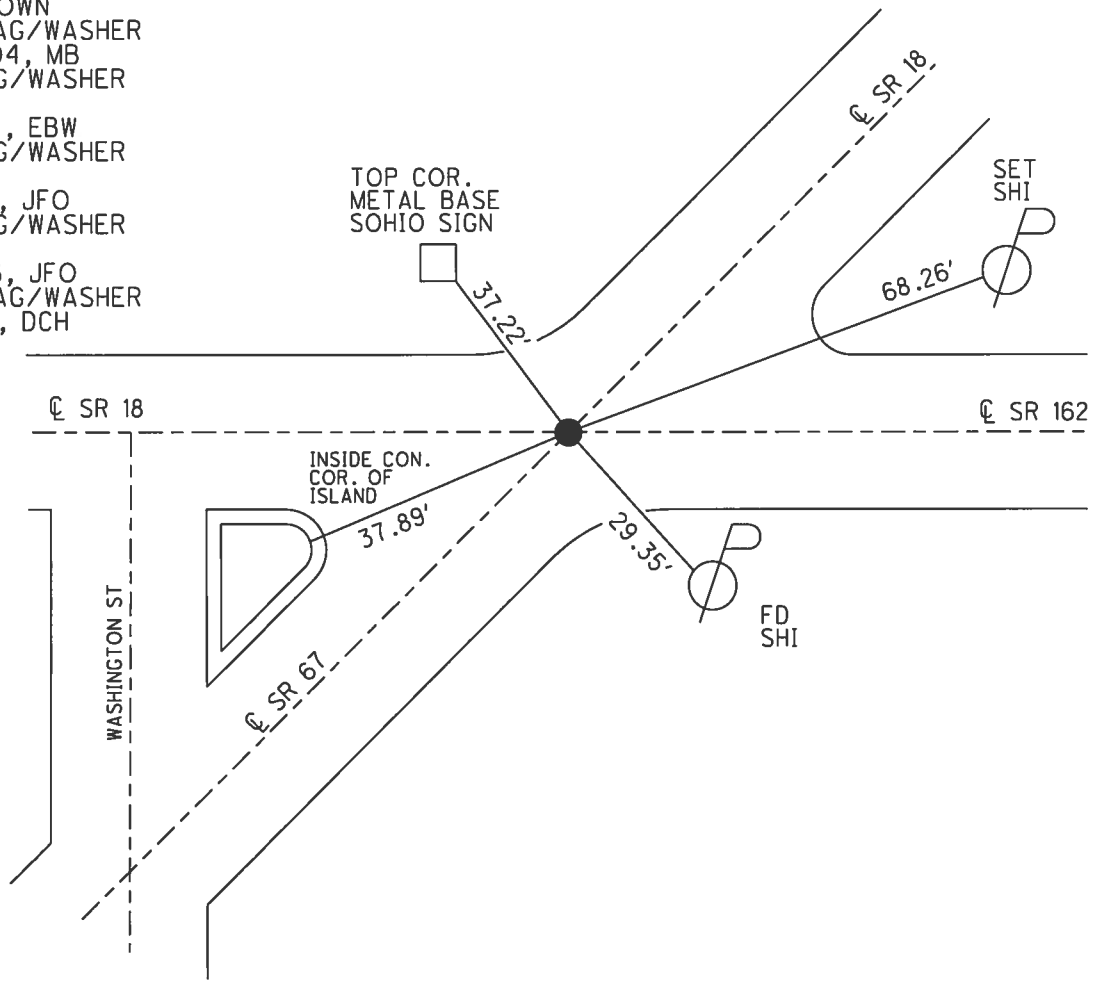
TYPE MONUMENT MAG/WASHER
 ON SURFACE - ~~BELOW~~ ON _____
 LEFT - ☉ PAV'T - ~~RIGHT~~ 1.5'
12' TO LT EDGE PAVEMENT
 S.L.M. 0+00



Grid: Northing: 531607.876 Easting: 1826098.508

RECORD:
 FD MINE SPIKE
 3.5" DOWN ATOP
 5/8" IPIN
 6.5" DOWN
 SET MAG/WASHER
 8/18/04, MB
 FD MAG/WASHER
 REF71
 5/7/14, EBW
 FD MAG/WASHER
 REF1
 1/8/16, JFO
 FD MAG/WASHER
 REF29
 2/5/16, JFO
 SET MAG/WASHER
 8/1/17, DCH

NOTE:
 SR 18=REF 71
 SR 67=REF 29

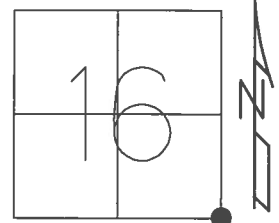


O.D.O.T. DISTRICT 2 SURVEY OFFICE (USE ONLY)

PERSONNEL _____ REFERENCE NO. 2 SHEET 2 OF 32

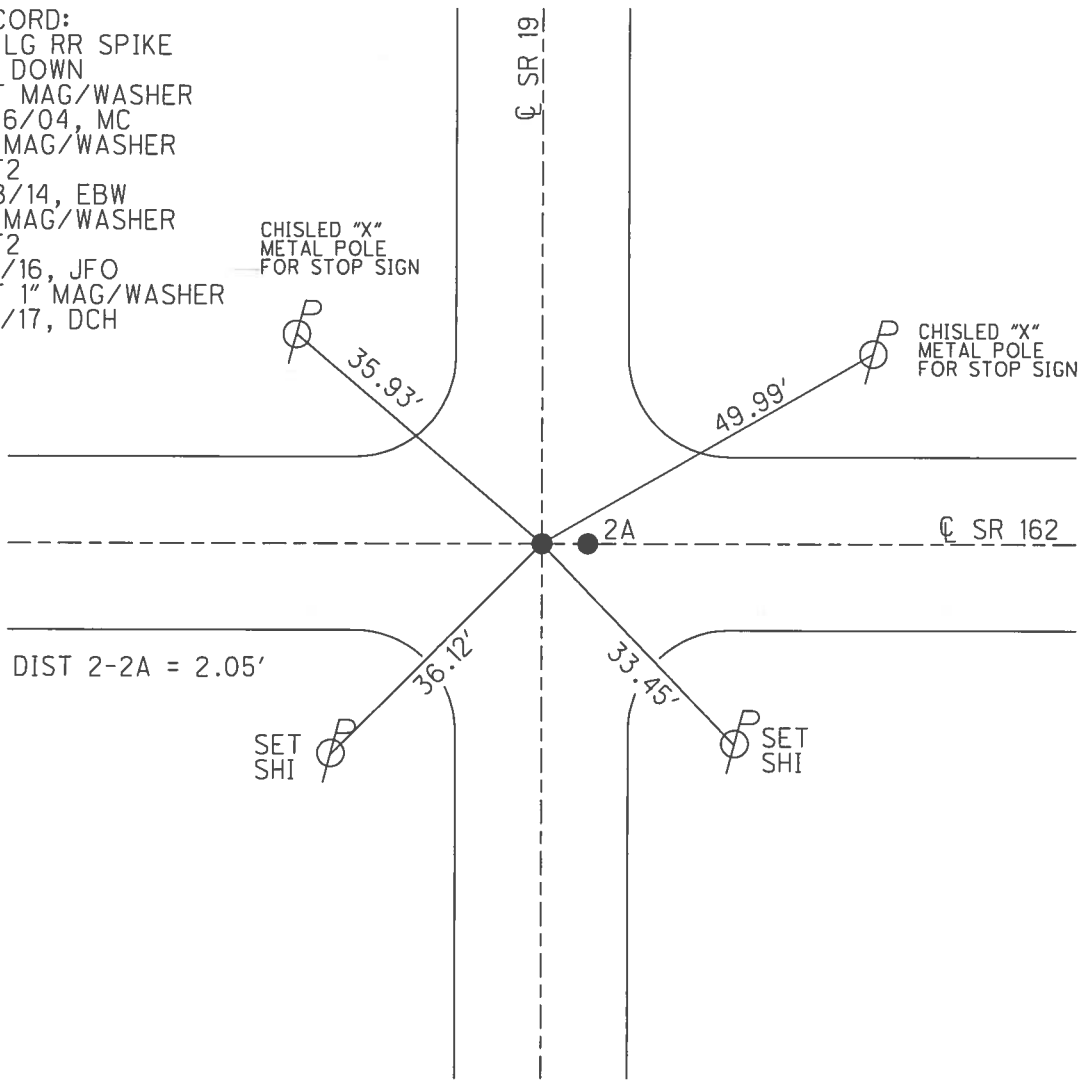
NOTES RHOADES _____ DATE 8/1/17 _____ ROUTE SR 162
 H.C. HOMAN _____ WEATHER SUNNY _____ COUNTY SENECA
 R.C. CARSON _____ TEMP. 70° _____ TOWNSHIP SCIPIO
 POORE _____ SECTION 16
 T 2 N R 16 E

TYPE MONUMENT MAG/WASHER
 ON SURFACE - ~~BELOW~~ ON
~~LEFT~~ - Q PAV'T - RIGHT ON
- TO - EDGE PAVEMENT
 S.L.M. 3+73



GRID: NORTHING: 531608.554 EASTING: 1826467.569

RECORD:
 FD LG RR SPIKE
 4 " DOWN
 SET MAG/WASHER
 10/6/04, MC
 FD MAG/WASHER
 REF2
 5/8/14, EBW
 FD MAG/WASHER
 REF2
 1/8/16, JFO
 SET 1" MAG/WASHER
 8/1/17, DCH

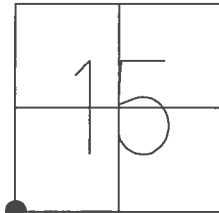


O.D.O.T. DISTRICT 2 SURVEY OFFICE (USE ONLY)

PERSONNEL _____ REFERENCE NO. 2 A SHEET 3 OF 32

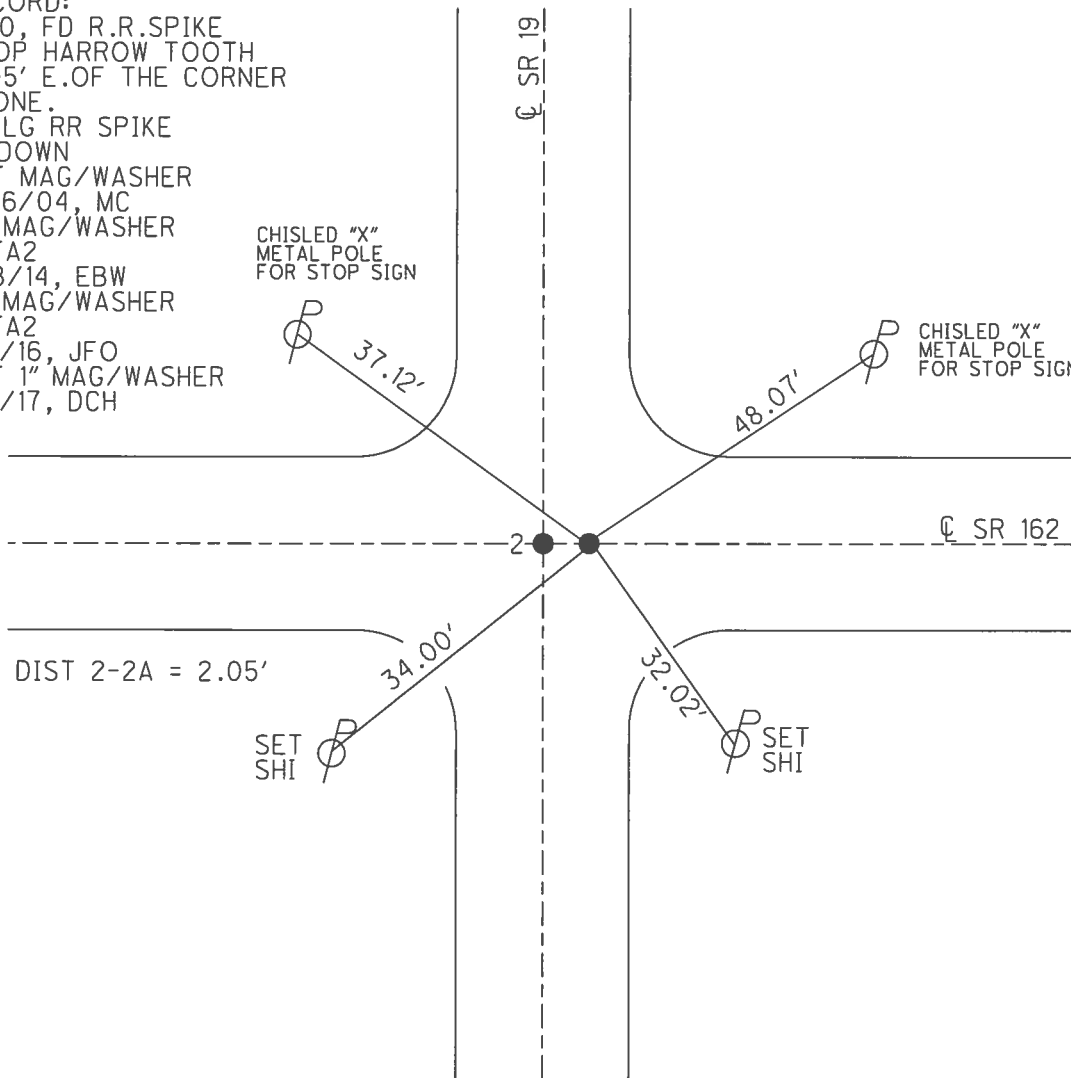
NOTES HOMAN _____ DATE 4/15/04 ROUTE SR 162
 H.C. NUHFER _____ WEATHER SUNNY COUNTY SENECA
 R.C. ARMS _____ TEMP. 65° TOWNSHIP SCIPIO
 HOOKER _____ SECTION 15
 T 2 N R 16 E

TYPE MONUMENT P.K./WASHER
 ON SURFACE - ~~BELOW~~ ON _____
~~LEFT~~ - Q PAV'T - RIGHT 2'
 - TO - EDGE PAVEMENT
 S.L.M. 3+75.05



GRID: NORTHING: 531608.622 EASTING: 1826469.606

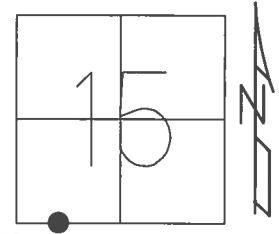
RECORD:
 1990, FD R.R.SPIKE
 ATOP HARROW TOOTH
 2.05' E.OF THE CORNER
 STONE.
 FD LG RR SPIKE
 4" DOWN
 SET MAG/WASHER
 10/6/04, MC
 FD MAG/WASHER
 REFA2
 5/8/14, EBW
 FD MAG/WASHER
 REFA2
 1/8/16, JFO
 SET 1" MAG/WASHER
 8/1/17, DCH



O.D.O.T. DISTRICT 2 SURVEY OFFICE (USE ONLY)

PERSONNEL _____ REFERENCE NO. 3 SHEET 4 OF 32
 NOTES RHOADES DATE 8/1/17 ROUTE SR 162
 H.C. HOMAN WEATHER SUNNY COUNTY SENECA
 R.C. CARSON TEMP. 70° TOWNSHIP SCIPIO
 SECTION 15
 T 2 N R 16 E

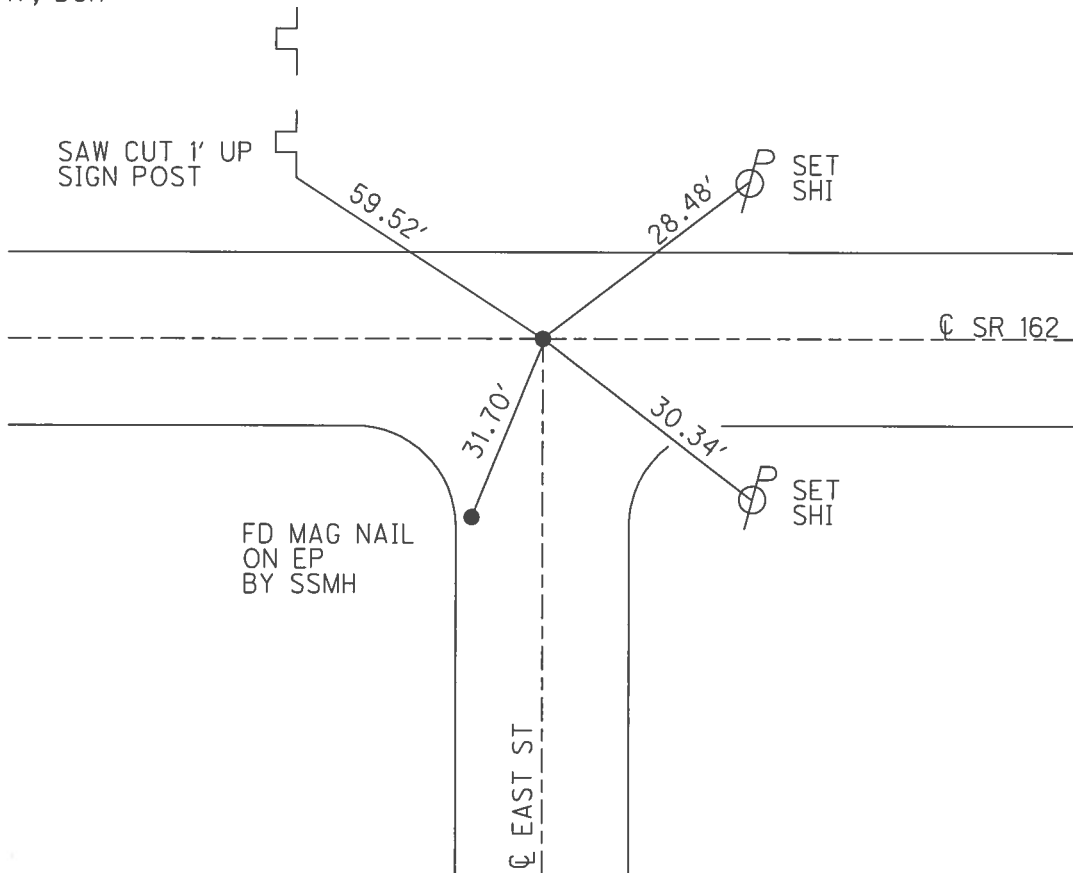
TYPE MONUMENT MAG/WASHER
 ON SURFACE - ~~BELOW~~ ON _____
~~LEFT~~ - ~~CL~~ PAV'T - RIGHT 1'
 - TO - EDGE PAVEMENT
 S.L.M. 8+12



GRID: NORTHING: 531608.208 EASTING: 1826913.735

RECORD:
 SET MAG/WASHER
 10-06-04, DCH
 FD MAG/WASHER
 REF3
 1/8/16, JFO
 SET 1" MAG/WASHER
 8/1/17, DCH

NOTE: PLASTIC CAP FOUND
 NO REG # ON CAP ONLY
 "MAKEEVER & ASSOC."
 THIS POINT WAS NOT SET
 BY ODOT.

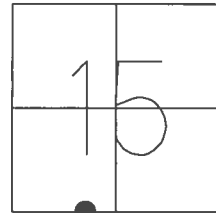


O.D.O.T. DISTRICT 2 SURVEY OFFICE (USE ONLY)

PERSONNEL _____ REFERENCE NO. 4 SHEET 5 OF 32

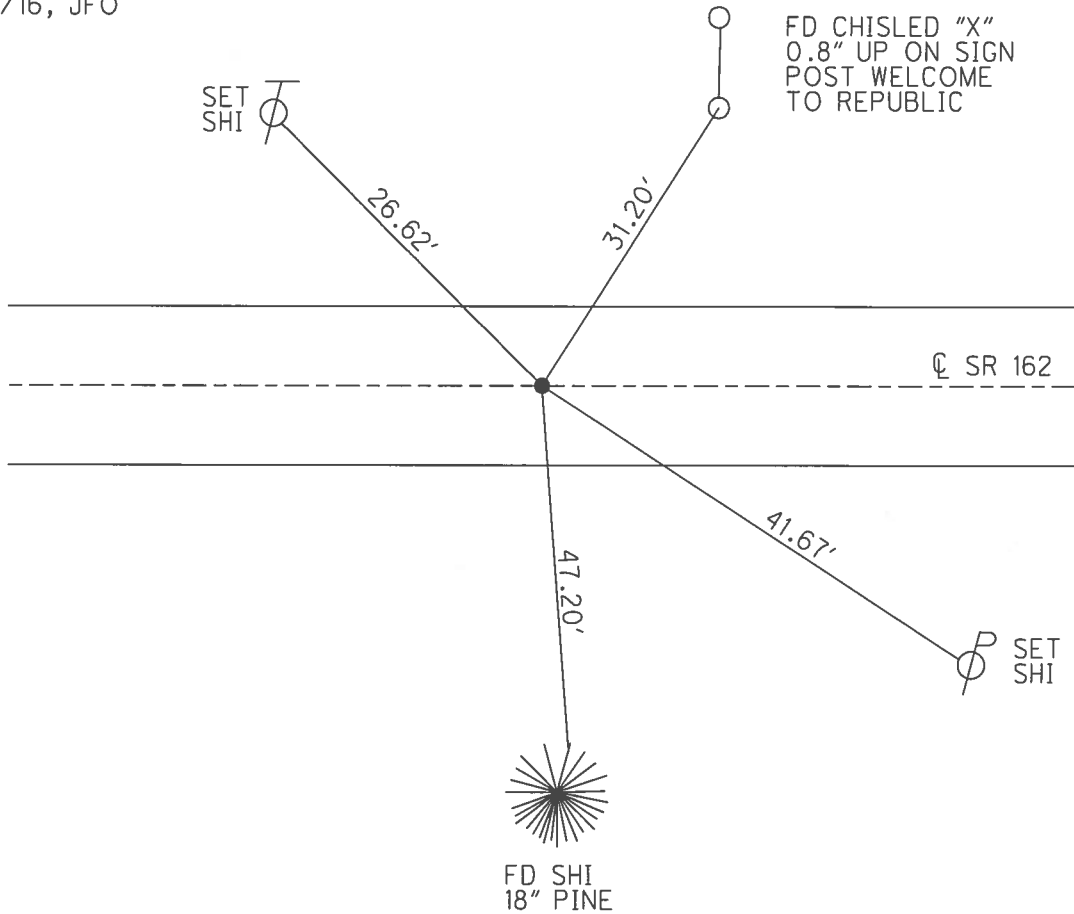
NOTES RHOADES _____ DATE 8/1/17 ROUTE SR 162
 H.C. HOMAN _____ WEATHER SUNNY COUNTY SENECA
 R.C. CARSON _____ TEMP. 70° TOWNSHIP SCIPIO
 POORE _____ SECTION 15
 T 2 N R 16 E

TYPE MONUMENT _____ MAG/WASHER _____
~~ON SURFACE~~ - BELOW 3"
~~LEFT~~ - ☉ PAV'T - RIGHT 0.7'
 - TO - EDGE PAVEMENT
 S.L.M. 19+10



GRID: NORTHING: 531606.133 EASTING: 1828007.757

RECORD:
 SET MAG/WASHER
 10-06-04, DCH
 FD MAG/WASHER
 REF4
 1/8/16, JFO

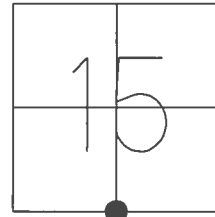


FD CHISLED "X"
 0.8" UP ON SIGN
 POST WELCOME
 TO REPUBLIC

O.D.O.T. DISTRICT 2 SURVEY OFFICE (USE ONLY)

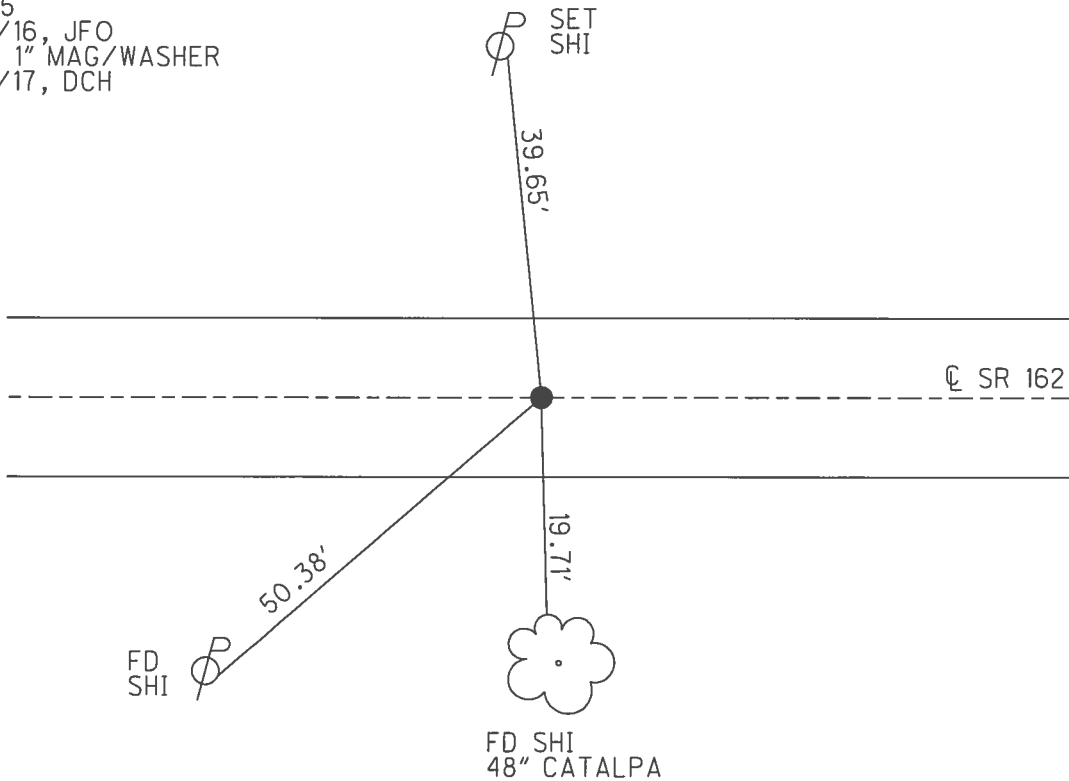
PERSONNEL _____ REFERENCE NO. 5 SHEET 6 OF 32
 NOTES RHOADES _____ DATE 8/1/17 ROUTE SR 162
 H.C. HOMAN _____ WEATHER SUNNY COUNTY SENECA
 R.C. CARSON _____ TEMP. 70° TOWNSHIP SCIPIO
 POORE _____ SECTION 15
 T 2 N R 16 E

TYPE MONUMENT MAG/WASHER
 ON SURFACE - ~~BELOW~~ ON
~~LEFT~~ - CL PAV'T - RIGHT 1.6'
- TO - EDGE PAVEMENT
 S.L.M. 30+53



GRID: NORTHING: 531605.452 EASTING: 1829146.575

RECORD: P.I.
 $\Delta = 00^{\circ}10' LT$
 STA. 187+61.6
 FD MINE SPIKE 3" DOWN
 FD LARGE RR SPIKE 5" DOWN
 FD HARROW TOOTH 15" DOWN
 DUG DOWN 24" DNF STONE
 SET MAG/WASHER
 10/6/04, DCH
 FD MAG/WASHER
 REF5
 1/8/16, JFO
 SET 1" MAG/WASHER
 8/1/17, DCH



O.D.O.T. DISTRICT 2 SURVEY OFFICE (USE ONLY)

PERSONNEL _____ REFERENCE NO. 6 SHEET 7 OF 32

NOTES RHOADES DATE 8/1/17 ROUTE SR 162

H.C. HOMAN WEATHER SUNNY COUNTY SENECA

R.C. CARSON TEMP. 70° TOWNSHIP SCIPIO

POORE SECTION 15

T 2 N R 16 E

TYPE MONUMENT MAG/WASHER

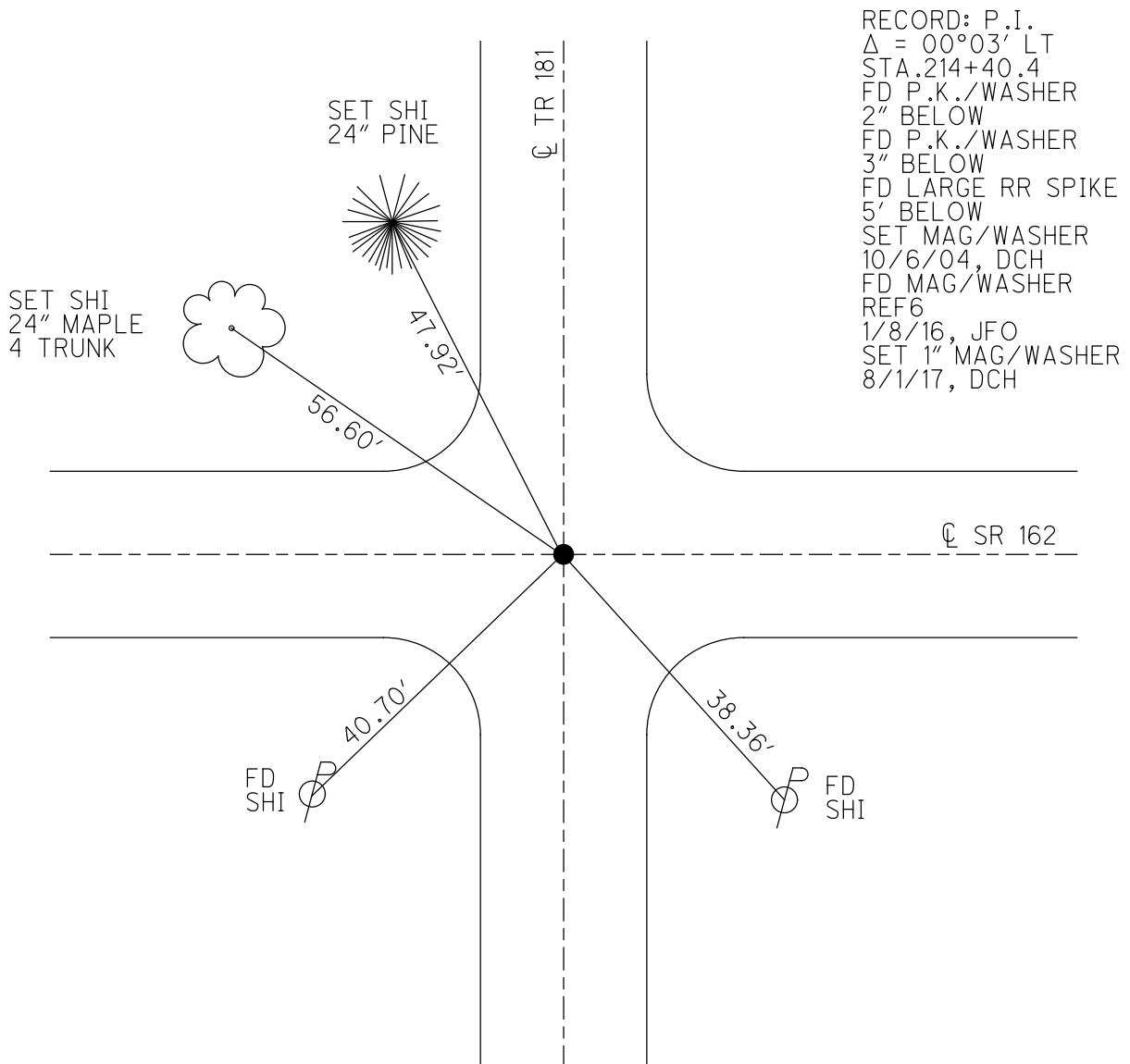
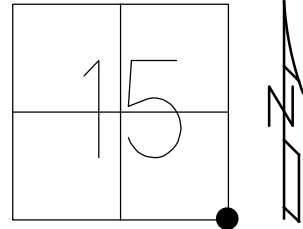
ON SURFACE - ~~BELOW~~ ON

~~LEFT~~ - CL PAV'T - RIGHT 0.5'

- TO - EDGE PAVEMENT

S.L.M. 57+30

GRID: NORTHING: 531610.143 EASTING: 1831825.529

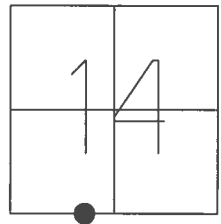


RECORD: P.I.
 $\Delta = 00^{\circ}03' LT$
 STA. 214+40.4
 FD P.K./WASHER
 2" BELOW
 FD P.K./WASHER
 3" BELOW
 FD LARGE RR SPIKE
 5' BELOW
 SET MAG/WASHER
 10/6/04, DCH
 FD MAG/WASHER
 REF6
 1/8/16, JFO
 SET 1" MAG/WASHER
 8/1/17, DCH

O.D.O.T. DISTRICT 2 SURVEY OFFICE (USE ONLY)

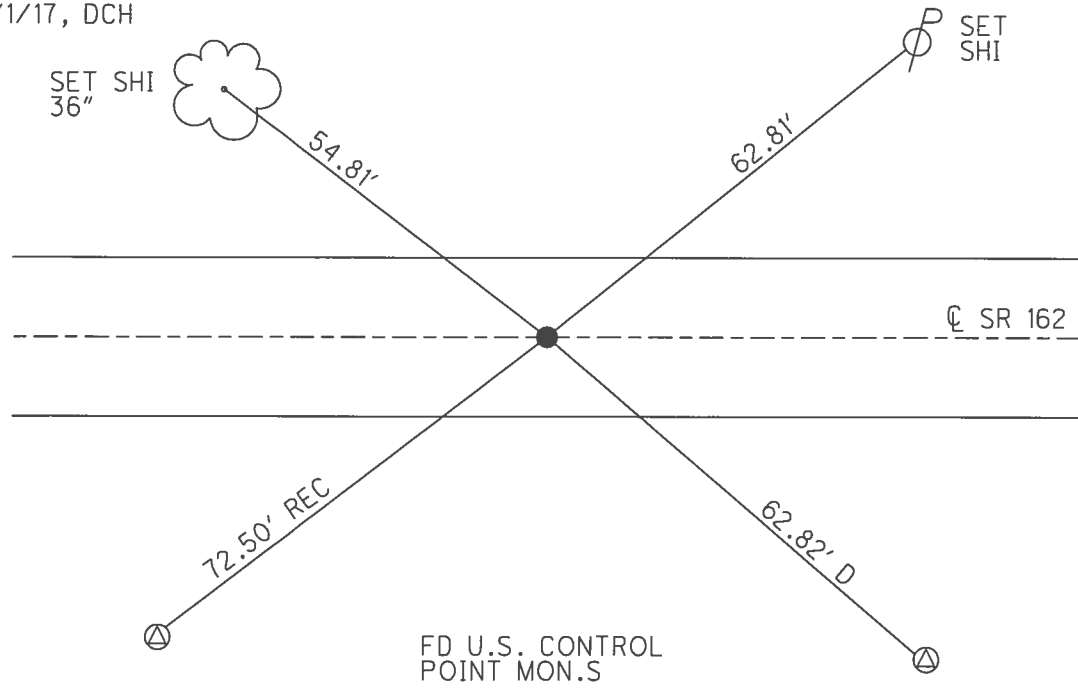
PERSONNEL _____ REFERENCE NO. 7 SHEET 8 OF 32
 NOTES RHOADES _____ DATE 8/1/17 ROUTE SR 162
 H.C. HOMAN _____ WEATHER SUNNY COUNTY SENECA
 R.C. CARSON _____ TEMP. 70° TOWNSHIP SCIPIO
 POORE _____ SECTION 14
 T 2 N R 16 E

TYPE MONUMENT MAG/WASHER
 ON SURFACE - ~~BELOW~~ ON _____
 LEFT - ☉ PAV'T - ~~RIGHT~~ 1.5"
 - TO - EDGE PAVEMENT
 S.L.M. 76+30



GRID: NORTHING: 531616.123 EASTING: 1833739.573

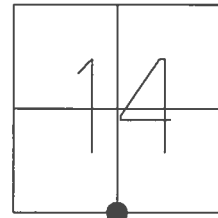
RECORD: P.O.T.
 STA. 233+54.05
 FD MINE SPIKE
 3" DOWN
 FD LG R.R.SPIKE
 6" DOWN
 SET MAG/WASHER
 10/6/04, DCH
 FD MAG/WASHER
 REF7
 1/8/16, JFO
 SET 1" MAG/WASHER
 8/1/17, DCH



O.D.O.T. DISTRICT 2 SURVEY OFFICE (USE ONLY)

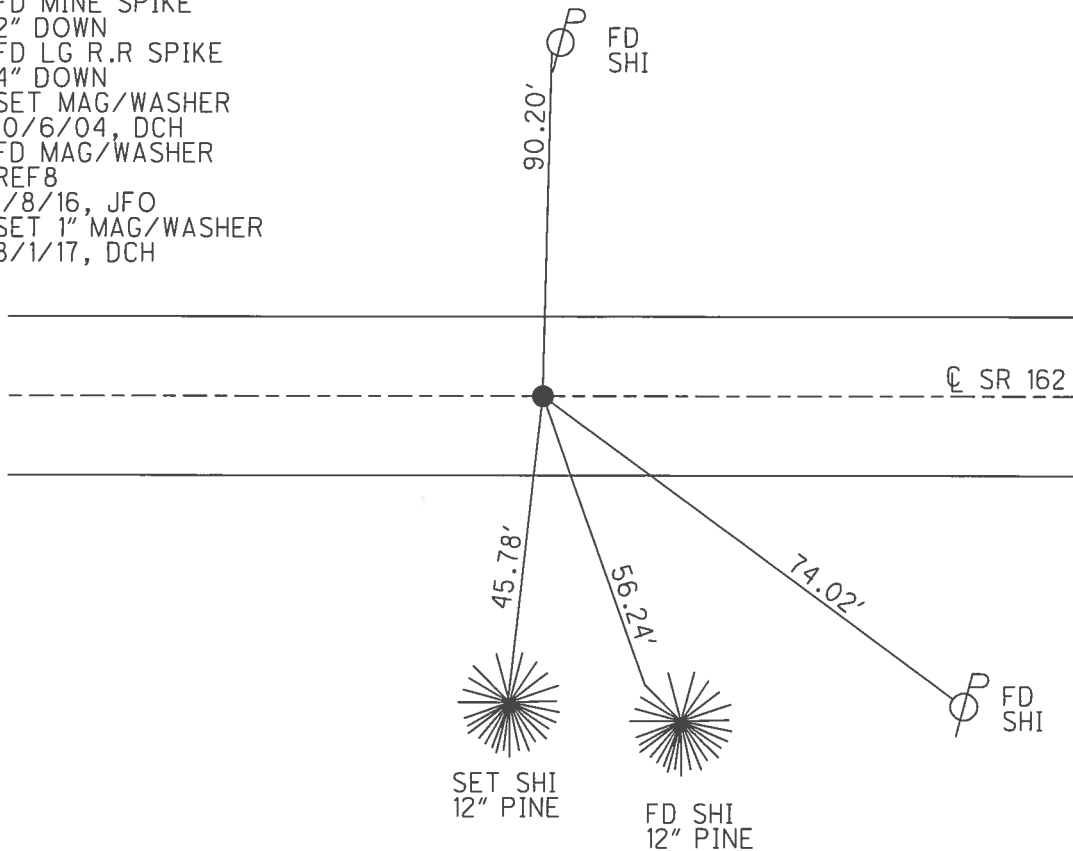
PERSONNEL _____ REFERENCE NO. 8 SHEET 9 OF 32
 NOTES RHOADES DATE 8/1/17 ROUTE SR 162
 H.C. HOMAN WEATHER SUNNY COUNTY SENECA
 R.C. CARSON TEMP. 70° TOWNSHIP SCIPIO
 _____ POORE _____ SECTION 14
 T 2 N R 16 E

TYPE MONUMENT MAG/WASHER
~~ON SURFACE~~ - BELOW ON
 LEFT - ☉ PAV'T - RIGHT ON
 _____ TO _____ EDGE PAVEMENT
 S.L.M. 84+16



GRID: NORTHING: 531618.418 EASTING: 1834512.402

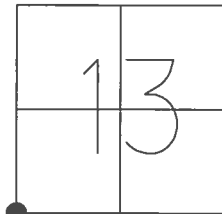
RECORD: P.I.
 $\Delta = 00^{\circ}36' RT$
 FD P.K./WASHER
 1" DOWN
 FD MINE SPIKE
 2" DOWN
 FD LG R.R SPIKE
 4" DOWN
 SET MAG/WASHER
 10/6/04, DCH
 FD MAG/WASHER
 REF8
 1/8/16, JFO
 SET 1" MAG/WASHER
 8/1/17, DCH



O.D.O.T. DISTRICT 2 SURVEY OFFICE (USE ONLY)

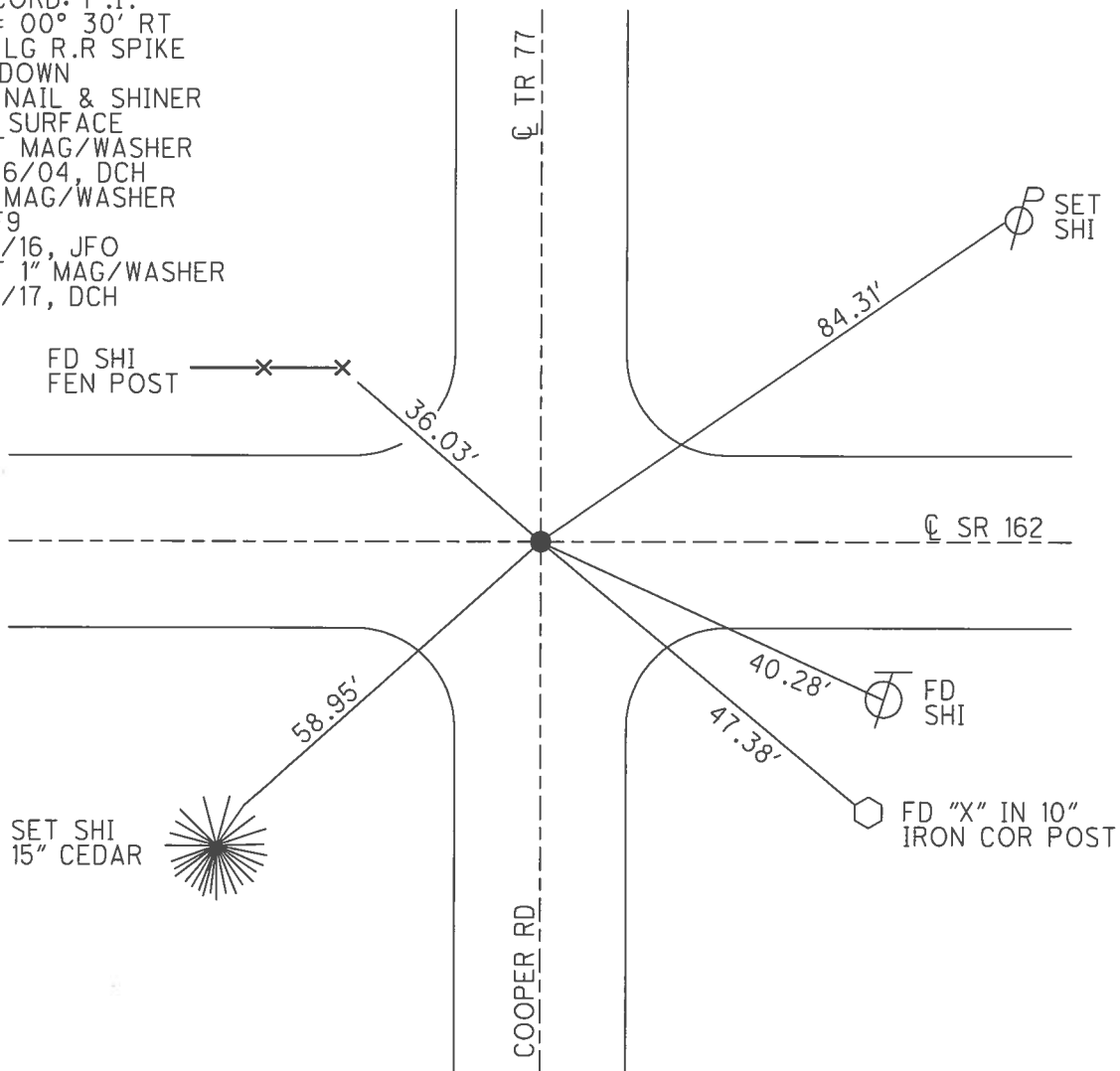
PERSONNEL _____ REFERENCE NO. 9 SHEET 10 OF 32
 NOTES RHOADES DATE 8/1/17 ROUTE SR 162
 H.C. HOMAN WEATHER SUNNY COUNTY SENECA
 R.C. CARSON TEMP. 77° TOWNSHIP SCPIO
POORE SECTION 13
 T 2 N R 16 E

TYPE MONUMENT MAG/WASHER
~~ON SURFACE~~ - BELOW ON
 LEFT - ☉ PAV'T - ~~RIGHT~~ 1'
- TO - EDGE PAVEMENT
 S.L.M. 110+93



GRID: NORTHING: 531600.273 EASTING: 1837196.261

RECORD: P.I.
 $\Delta = 00^\circ 30' \text{ RT}$
 FD LG R.R SPIKE
 5" DOWN
 FD NAIL & SHINER
 ON SURFACE
 SET MAG/WASHER
 10/6/04, DCH
 FD MAG/WASHER
 REF9
 1/8/16, JFO
 SET 1" MAG/WASHER
 8/1/17, DCH

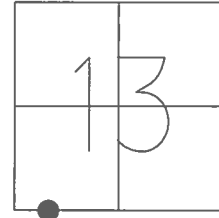


O.D.O.T. DISTRICT 2 SURVEY OFFICE (USE ONLY)

PERSONNEL _____ REFERENCE NO. 10 SHEET 11 OF 32

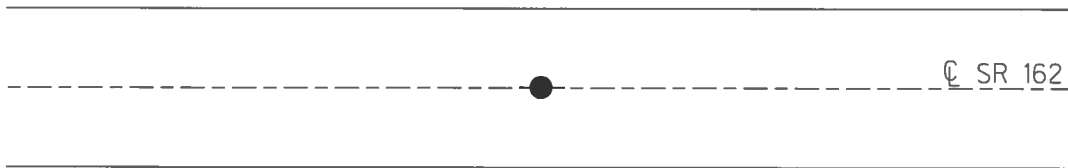
NOTES HOMAN DATE 4/14/04 ROUTE SR 162
H.C. HOMAN WEATHER SUNNY COUNTY SENECA
R.C. ARMS TEMP. 55° TOWNSHIP SCIPIO
SECTION 13
T 2 N R 16 E

TYPE MONUMENT R.R.SPIKE
ON SURFACE - BELOW -
LEFT - ☉ PAV'T - RIGHT -
- TO - EDGE PAVEMENT
S.L.M. 121+07



GRID: NORTHING: _____ EASTING: _____

RECORD: P.I.
STA. 278+23.4
R.R.SPIKE
 $\Delta = 00^\circ 0' RT$
D.N.F.
1979, 2004, 2016



O.D.O.T. DISTRICT 2 SURVEY OFFICE (USE ONLY)

PERSONNEL _____ REFERENCE NO. 11 SHEET 12 OF 32

NOTES RHOADES _____ DATE 8/1/17 ROUTE SR 162
 H.C. HOMAN _____ WEATHER SUNNY COUNTY SENECA
 R.C. CARSON _____ TEMP. 77° TOWNSHIP SCIPIO
 POORE _____ SECTION 13
 T 2 N R 16 E

TYPE MONUMENT MAG/WASHER

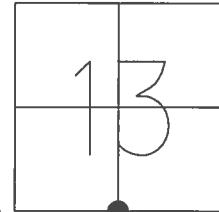
ON SURFACE - ~~BELOW~~ ON _____

LEFT - ☉ PAV'T - ~~RIGHT~~ 3.5'

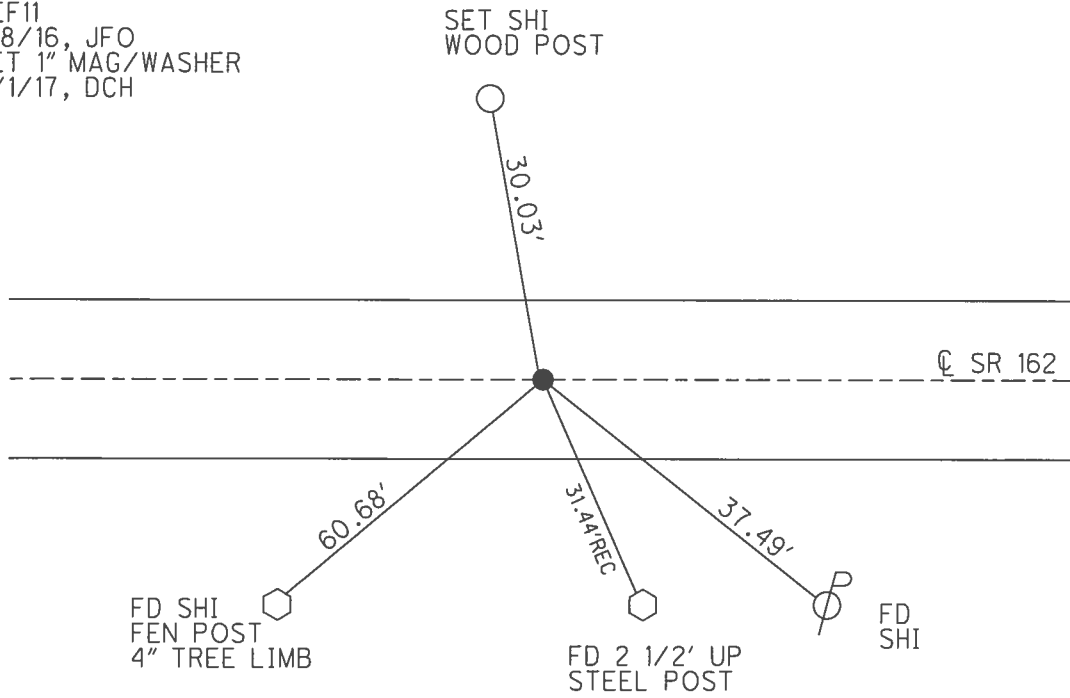
TO EDGE PAVEMENT

S.L.M. 137+32

GRID: NORTHING: 531561.721 EASTING: 1839830.404



RECORD: P.I.
 $\Delta = 00^\circ 01' RT$
 STA: 294+43.3 (PLAN)
 P.I. $\Delta = 00^\circ 02' 30'' RT$
 POINT SET BY JERRY WEININGER
 APRIL 1984. S COR SEC. 13
 FD PK NAIL
 1" DOWN
 D.N.F R.R.SPIKE
 @ 9" DOWN
 SET P.K./WASHER
 10/6/04, DCH
 FD MAG/WASHER
 REF11
 1/8/16, JFO
 SET 1" MAG/WASHER
 8/1/17, DCH

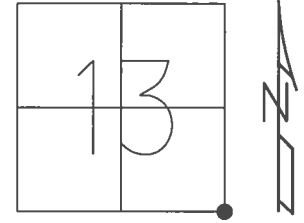


O.D.O.T. DISTRICT 2 SURVEY OFFICE (USE ONLY)

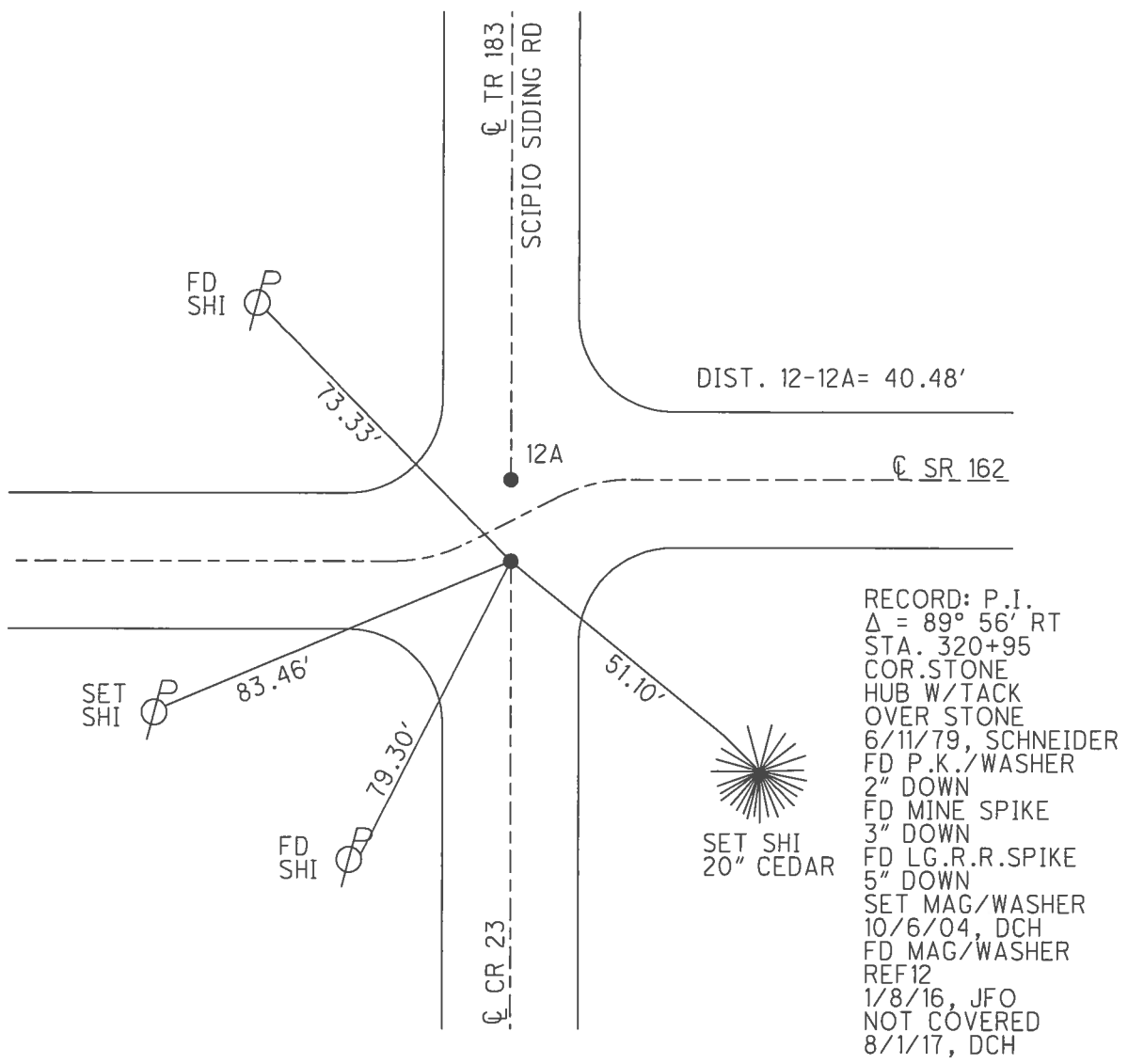
PERSONNEL _____ REFERENCE NO. 12 SHEET 13 OF 32

NOTES RHOADES _____ DATE 8/1/17 _____ ROUTE SR 162
 H.C. HOMAN _____ WEATHER SUNNY _____ COUNTY SENECA
 R.C. CARSON _____ TEMP. 77° _____ TOWNSHIP SCIPIO
 POORE _____ SECTION 13
 T 2 N R 16 E

TYPE MONUMENT MAG/WASHER
~~ON SURFACE~~ - BELOW ON
~~LEFT~~ - ☉ PAV'T - RIGHT 36.5'
_____ TO _____ EDGE PAVEMENT
 S.L.M. 163+95



GRID: NORTHING: 531521.143 EASTING: 1842480.855



O.D.O.T. DISTRICT 2 SURVEY OFFICE (USE ONLY)

PERSONNEL _____ REFERENCE NO. 12 A SHEET 14 OF 32

NOTES RHOADES _____ DATE 8/1/17 _____ ROUTE SR 162
 H.C. HOMAN _____ WEATHER SUNNY _____ COUNTY SENECA
 R.C. CARSON _____ TEMP. 77° _____ TOWNSHIP SCIPIO
 POORE _____ SECTION 13
 T 2 N R 16 E

TYPE MONUMENT MAG/WASHER

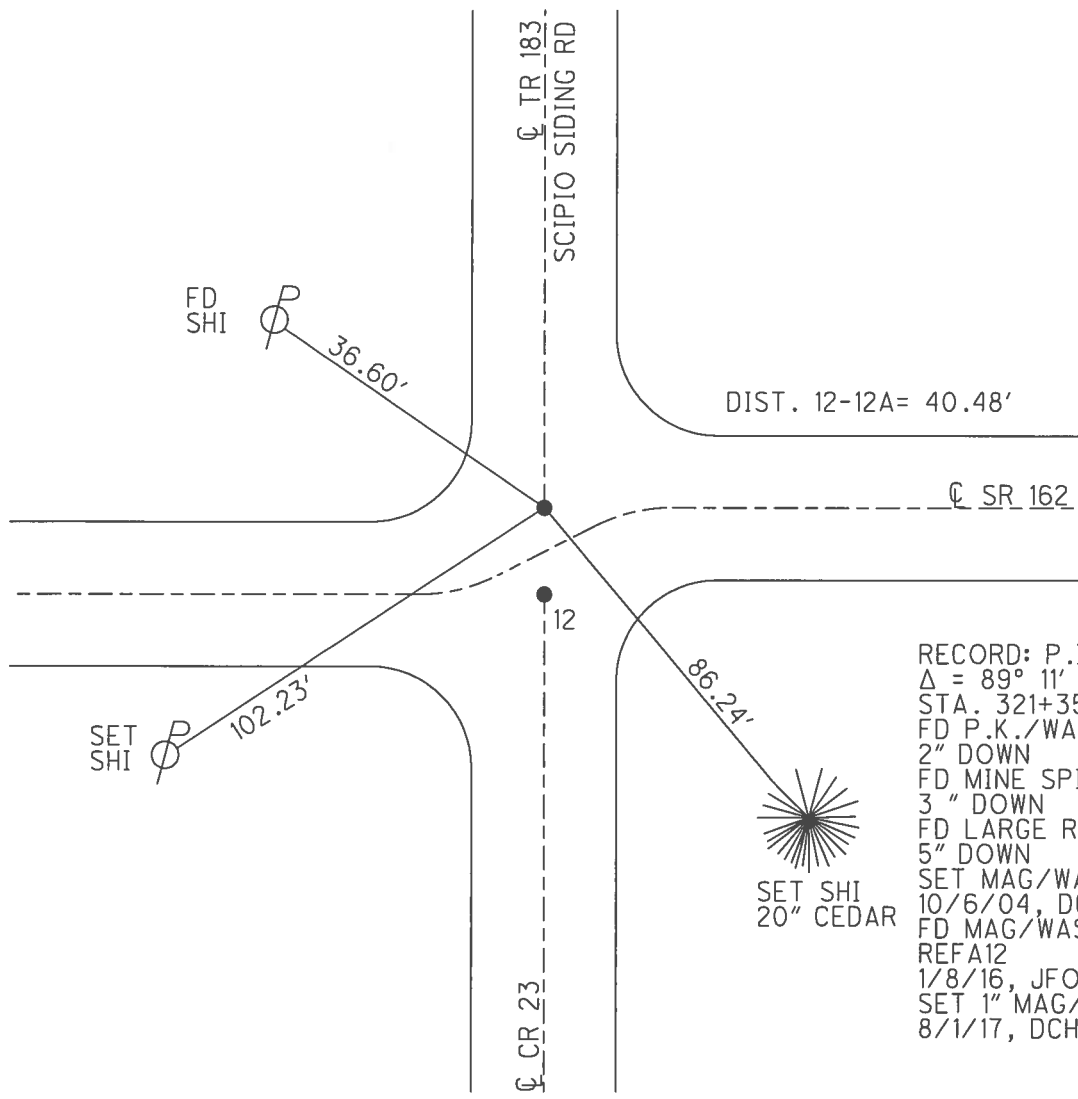
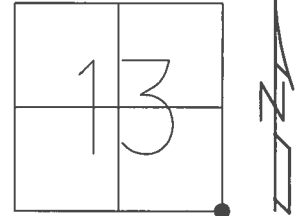
~~ON SURFACE~~ - BELOW ON

LEFT - ☉ PAV'T - ~~RIGHT~~ 4.5'

TO - EDGE PAVEMENT

S.L.M. 163+95

GRID: NORTHING: 531561.597 EASTING: 1842481.421



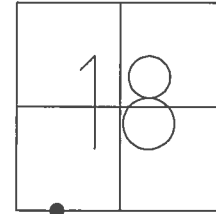
RECORD: P.I.
 $\Delta = 89^\circ 11' RT$
 STA. 321+35.52
 FD P.K./WASHER
 2" DOWN
 FD MINE SPIKE
 3" DOWN
 FD LARGE R.R.SPIKE
 5" DOWN
 SET MAG/WASHER
 10/6/04, DCH
 FD MAG/WASHER
 REFA12
 1/8/16, JFO
 SET 1" MAG/WASHER
 8/1/17, DCH

O.D.O.T. DISTRICT 2 SURVEY OFFICE (USE ONLY)

PERSONNEL _____ REFERENCE NO. 13 SHEET 15 OF 32

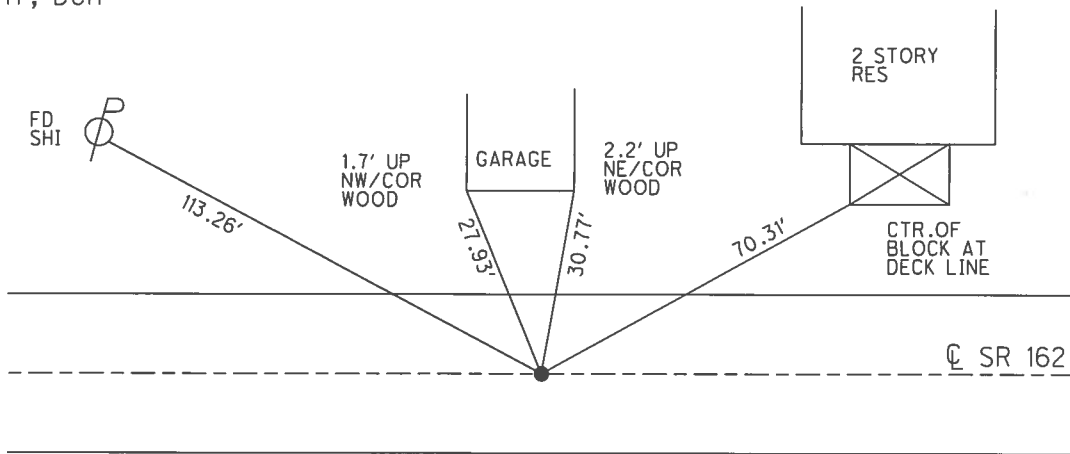
NOTES RHOADES _____ DATE 8/1/17 _____ ROUTE SR 162
 H.C. HOMAN _____ WEATHER SUNNY _____ COUNTY SENECA
 R.C. CARSON _____ TEMP. 77° _____ TOWNSHIP REED
 POORE _____ SECTION 18
 T 2 N R 17 E

TYPE MONUMENT MAG/WASHER
 ON SURFACE - ~~BELOW~~ ON _____
 LEFT - ☉ PAV'T - ~~RIGHT~~ 1.5'
 _____ TO _____ EDGE PAVEMENT
 S.L.M. 173+55



GRID: NORTHING: 531557.915 EASTING: 1843441.216

RECORD: P.O.T.
 FD P.K./WASHER
 1" DOWN
 FD MINE SPIKE
 2" DOWN
 FD LG R.R. SPIKE
 4" DOWN
 SET MAG/WASHER
 10/6/04, DCH
 FD MAG/WASHER
 REF13
 1/8/16, JFO
 SET 1" MAG/WASHER
 8/1/17, DCH

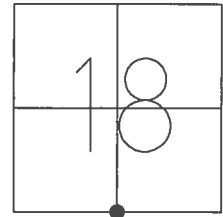


O.D.O.T. DISTRICT 2 SURVEY OFFICE (USE ONLY)

PERSONNEL _____ REFERENCE NO. 14 SHEET 16 OF 32

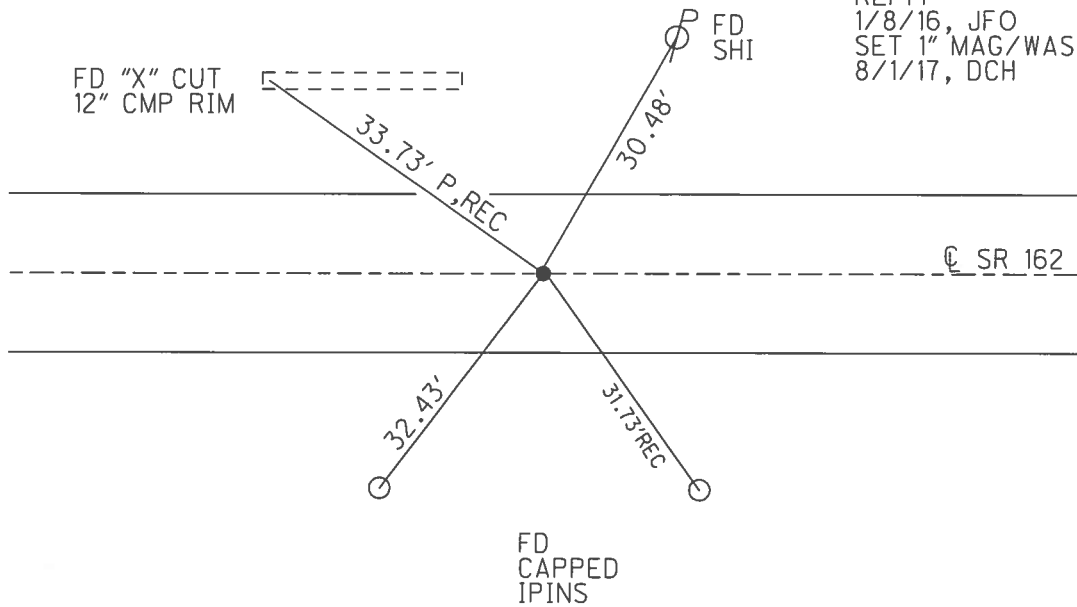
NOTES RHOADES DATE 8/1/17 ROUTE SR 162
 H.C. HOMAN WEATHER SUNNY COUNTY SENECA
 R.C. CARSON TEMP. 77° TOWNSHIP REED
POORE SECTION 18
 T 2 N R 16 E

TYPE MONUMENT MAG/WASHER
 ON SURFACE - ~~BELOW~~ ON
 LEFT - ☉ PAV'T - ~~RIGHT~~ 2.5'
 - TO - EDGE PAVEMENT
 S.L.M. 189+98



GRID: NORTHING: 531551.247 EASTING: 1845064.441

RECORD: P.I.
 $\Delta = 00^\circ 16' RT$
 FD P.K./WASHER
 1" DOWN
 FD MINE SPIKE
 3" DOWN
 FD SM R.R SPIKE
 4" DOWN
 SET MAG/WASHER
 9/7/04, DCH
 FD MAG/WASHER
 REF14
 1/8/16, JFO
 SET 1" MAG/WASHER
 8/1/17, DCH



O.D.O.T. DISTRICT 2 SURVEY OFFICE (USE ONLY)

PERSONNEL _____ REFERENCE NO. 15 SHEET 17 OF 32

NOTES RHOADES DATE 9/16/16 ROUTE SR 162

H.C. O'DONNELL WEATHER FAIR COUNTY SENECA

R.C. RHOADES TEMP. 68° TOWNSHIP REED

SECTION 18

T 2 N R 17 E

TYPE MONUMENT MAG/WASHER

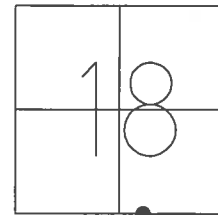
ON SURFACE - ~~BELOW~~ ON _____

LEFT - ☉ PAV'T - ~~RIGHT~~ 2'

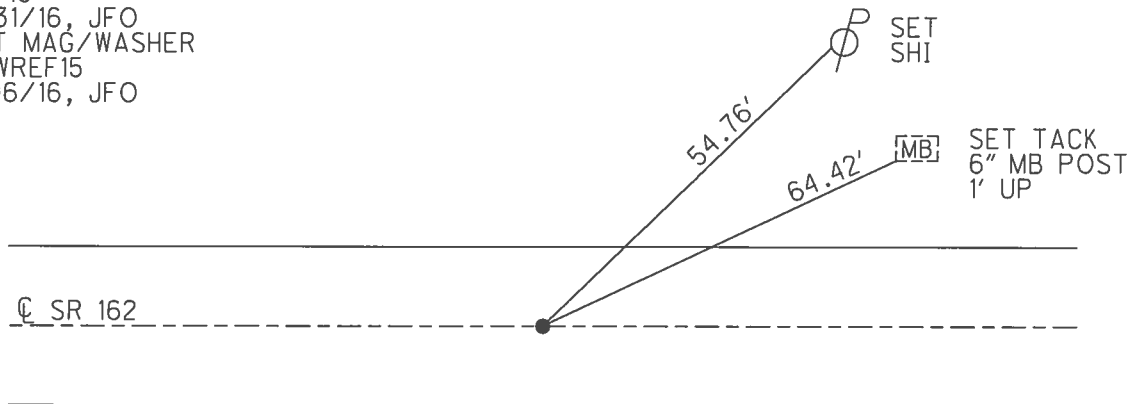
- TO - _____ EDGE PAVEMENT

S.L.M. 195+88

GRID: NORTHING: 531546.614 EASTING: 1845681.734



RECORD:
 FD LG.R.R.SPIKE
 12" DOWN
 7/13/04, DCH
 SET MAG/WASHER
 9-07-04, DCH
 FD MAG SHANK
 REF15
 5/31/16, JFO
 SET MAG/WASHER
 NEWREF15
 9/16/16, JFO

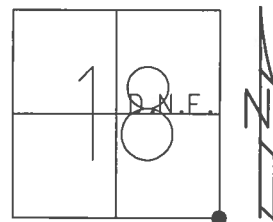


O.D.O.T. DISTRICT 2 SURVEY OFFICE (USE ONLY)

PERSONNEL _____ REFERENCE NO. 16 SHEET 18 OF 32

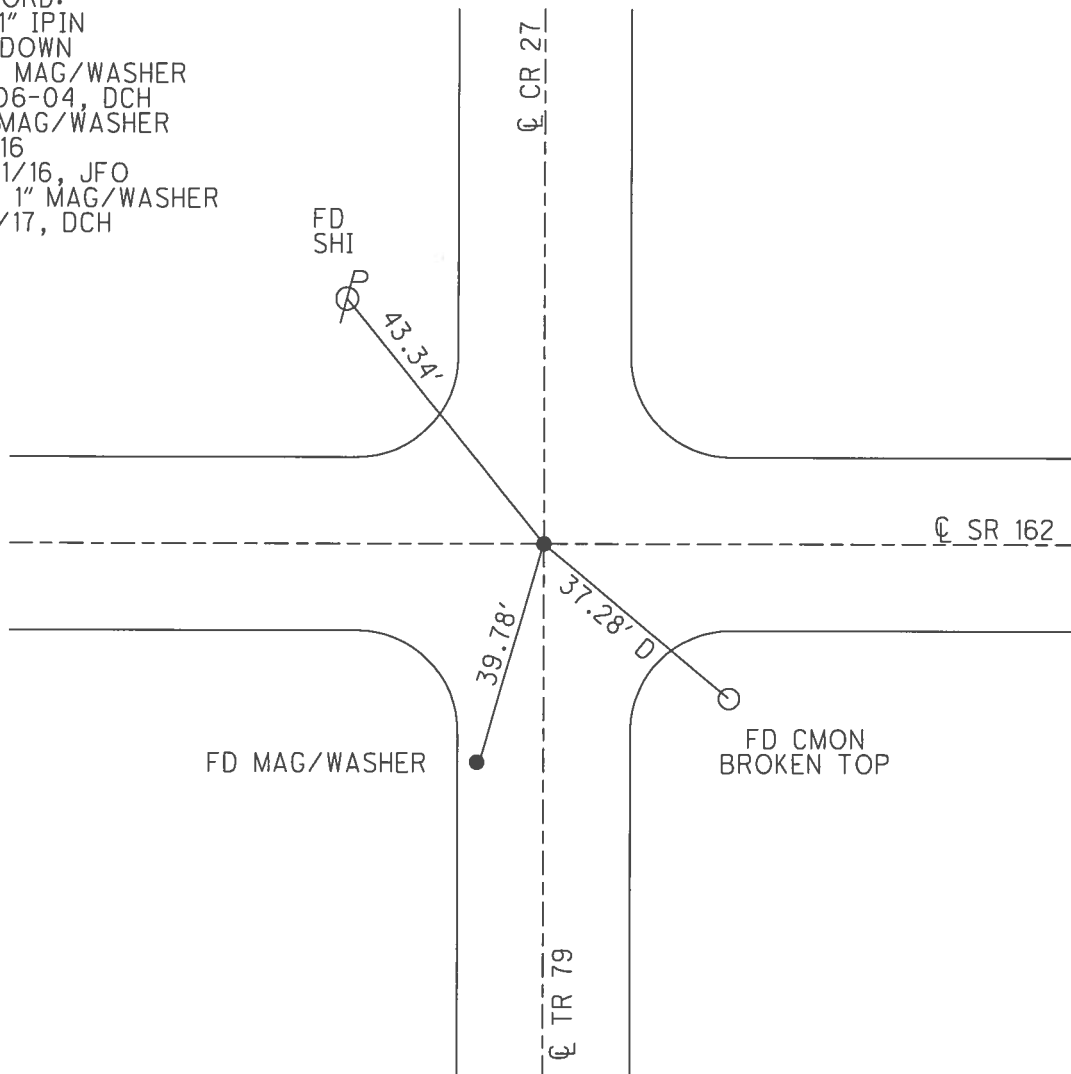
NOTES RHOADES DATE 8/1/17 ROUTE SR 162
 H.C. HOMAN WEATHER SUNNY COUNTY SENECA
 R.C. CARSON TEMP. 77° TOWNSHIP REED
POORE SECTION 18
 T 2 N R 17 E

TYPE MONUMENT MAG/WASHER
 ON SURFACE - ~~BELOW~~ ON
 LEFT - CL PAV'T - ~~RIGHT~~ 2'
- TO - EDGE PAVEMENT
 S.L.M. 216+40



GRID: NORTHING: 531529.298 EASTING: 1847708.235

RECORD:
 FD 1" IPIN
 12" DOWN
 SET MAG/WASHER
 10-06-04, DCH
 FD MAG/WASHER
 REF 16
 5/31/16, JFO
 SET 1" MAG/WASHER
 8/1/17, DCH



O.D.O.T. DISTRICT 2 SURVEY OFFICE (USE ONLY)

PERSONNEL _____ REFERENCE NO. 17 SHEET 19 OF 32

NOTES RHOADES _____ DATE 8/1/17 ROUTE SR 162
 H.C. HOMAN _____ WEATHER SUNNY COUNTY SENECA
 R.C. CARSON _____ TEMP. 85° TOWNSHIP REED
 POORE _____ SECTION 17
 T 2 N R 17 E

TYPE MONUMENT MAG/WASHER

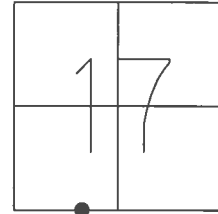
ON SURFACE - ~~BELOW~~ ON _____

LEFT - ☉ PAV'T - ~~RIGHT~~ 2'

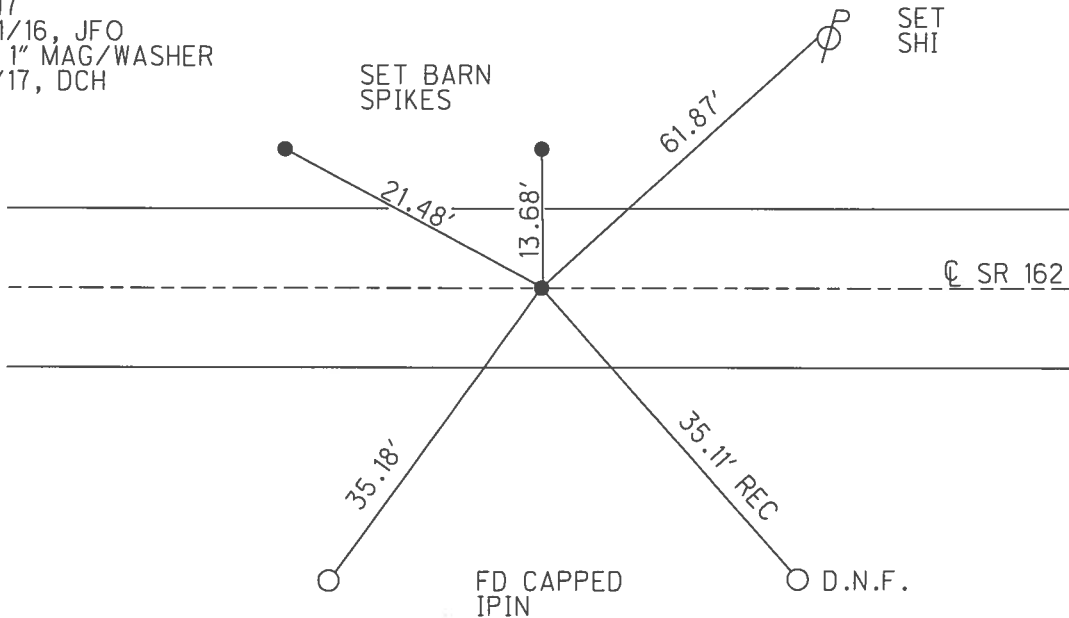
- TO - EDGE PAVEMENT

S.L.M. 235+90

GRID: NORTHING: 531490.912 EASTING: 1849647.610



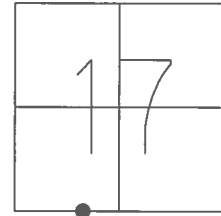
RECORD: P.O.T.
 FD SM.R.R.SPIKE
 3" DOWN
 FD SM.R.R.SPIKE
 5" DOWN
 SET MAG/WASHER
 9/7/04, DCH
 FD MAG/WASHER
 REF17
 5/31/16, JFO
 SET 1" MAG/WASHER
 8/1/17, DCH



O.D.O.T. DISTRICT 2 SURVEY OFFICE (USE ONLY)

PERSONNEL _____ REFERENCE NO. 18 SHEET 20 OF 32
 NOTES RHOADES DATE 8/1/17 ROUTE SR 162
 H.C. HOMAN WEATHER SUNNY COUNTY SENECA
 R.C. CARSON TEMP. 85° TOWNSHIP REED
 _____ POORE _____ SECTION 17
 _____ T 2 N R 17 E

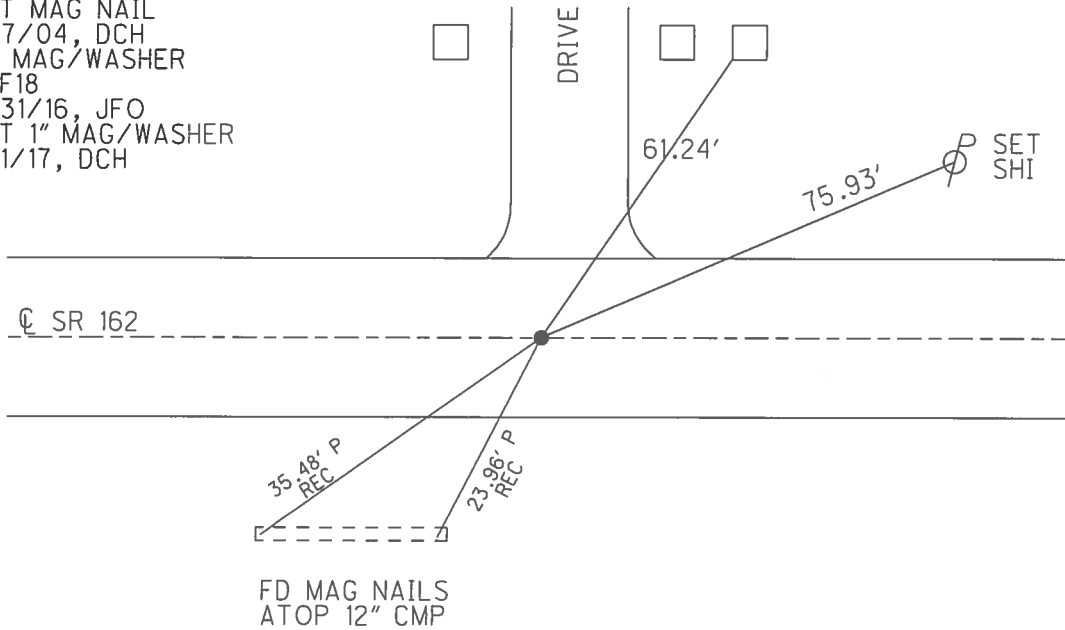
TYPE MONUMENT MAG/WASHER
 ON SURFACE - ~~BELOW~~ ON _____
 LEFT - ☉ PAV'T - ~~RIGHT~~ 1.5'
 - TO - EDGE PAVEMENT
 S.L.M. 243+00



GRID: NORTHING: 531476.842 EASTING: 1850354.557

RECORD: P.I.
 $\Delta = 00^\circ 16' \text{ LT}$
 FD P.K.NAIL
 1" DOWN
 SET MAG NAIL
 9/7/04, DCH
 FD MAG/WASHER
 REF18
 5/31/16, JFO
 SET 1" MAG/WASHER
 8/1/17, DCH

MID 6TH UP OF
 SLATE STONE
 COLUMN OF SIGN
 12505 SR 162
 WOODED ACRES

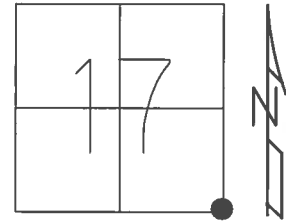


O.D.O.T. DISTRICT 2 SURVEY OFFICE (USE ONLY)

PERSONNEL _____ REFERENCE NO. 19 SHEET 21 OF 32

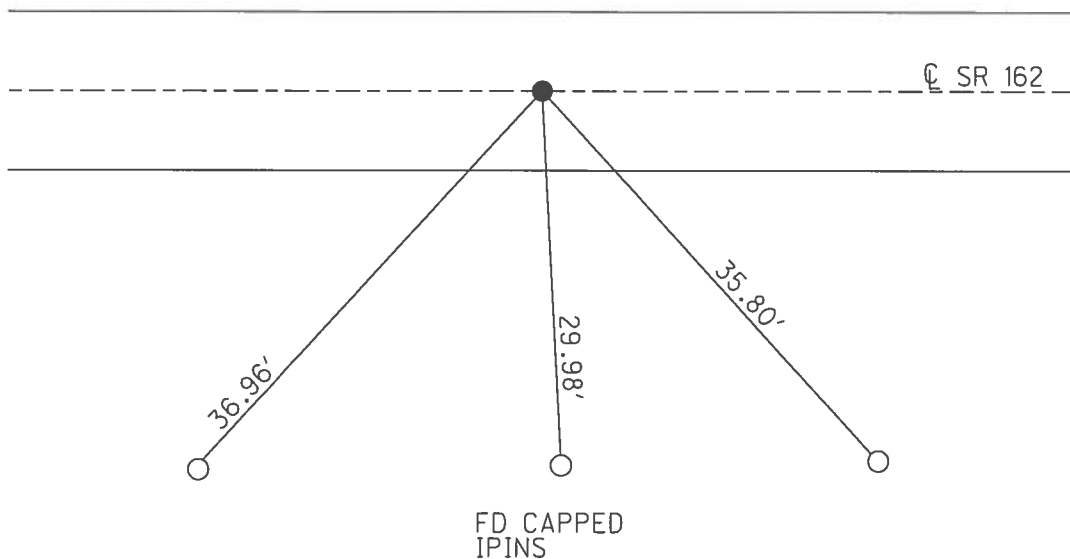
NOTES POORE _____ DATE 8/2/17 ROUTE SR 162
 H.C. HOMAN _____ WEATHER SUNNY COUNTY SENECA
 R.C. CARSON _____ TEMP. 75° TOWNSHIP REED
 RHOADES _____ SECTION 17
 T 2 N R 17 E

TYPE MONUMENT MAG/WASHER
 ON SURFACE - ~~BELOW~~ ON
~~LEFT~~ - CL PAV'T - RIGHT 1.5'
TO EDGE PAVEMENT
 S.L.M. 269+43



GRID: NORTHING: 531437.605 EASTING: 1852991.585

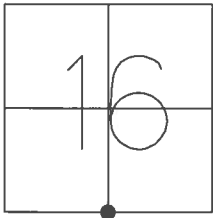
RECORD: P.I.
 $\Delta = 00^\circ 27' LT$
 FD P.K./WASHER
 1" DOWN
 FD SM.R.R.SPIKE
 3" DOWN
 SET MAG/WASHER
 9/3/4, DCH
 FD MAG/WASHER
 REF19
 5/31/16, JFO
 SET 1" MAG/WASHER
 8/2/17, DCH



O.D.O.T. DISTRICT 2 SURVEY OFFICE (USE ONLY)

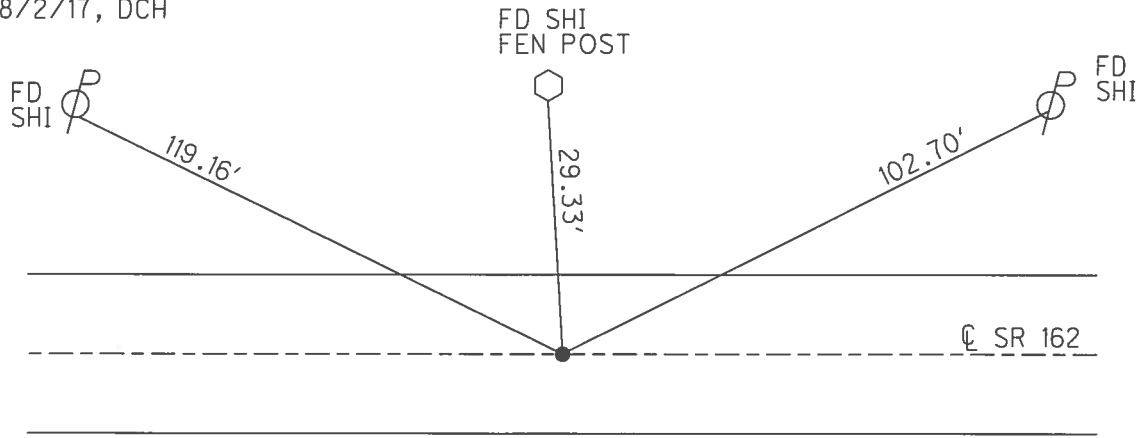
PERSONNEL _____ REFERENCE NO. 20 SHEET 22 OF 32
 NOTES POORE _____ DATE 8/2/17 _____ ROUTE SR 162 _____
 H.C. HOMAN _____ WEATHER SUNNY _____ COUNTY SENECA _____
 R.C. CARSON _____ TEMP. 75° _____ TOWNSHIP REED _____
 RHOADES _____ SECTION 16 _____
 T 2 N R 17 E

TYPE MONUMENT MAG/WASHER
 ON SURFACE - ~~BELOW~~ ON _____
~~LEFT~~ - \odot PAV'T - RIGHT 0.5'
 - TO - EDGE PAVEMENT
 S.L.M. 295+86



GRID: NORTHING: 531417.309 EASTING: 1855634.513

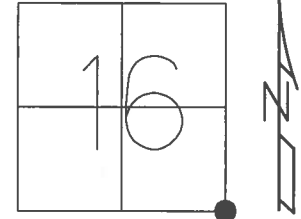
RECORD: P.I.
 $\Delta = 00^{\circ} 18' LT$
 FD P.K./WASHER
 2" DOWN
 SM.R.R.SPIKE
 3" DOWN
 SET MAG NAIL
 9/7/04, DCH
 FD MAG/WASHER
 REF20
 5/31/16, JFO
 SET 1" MAG/WASHER
 8/2/17, DCH



O.D.O.T. DISTRICT 2 SURVEY OFFICE (USE ONLY)

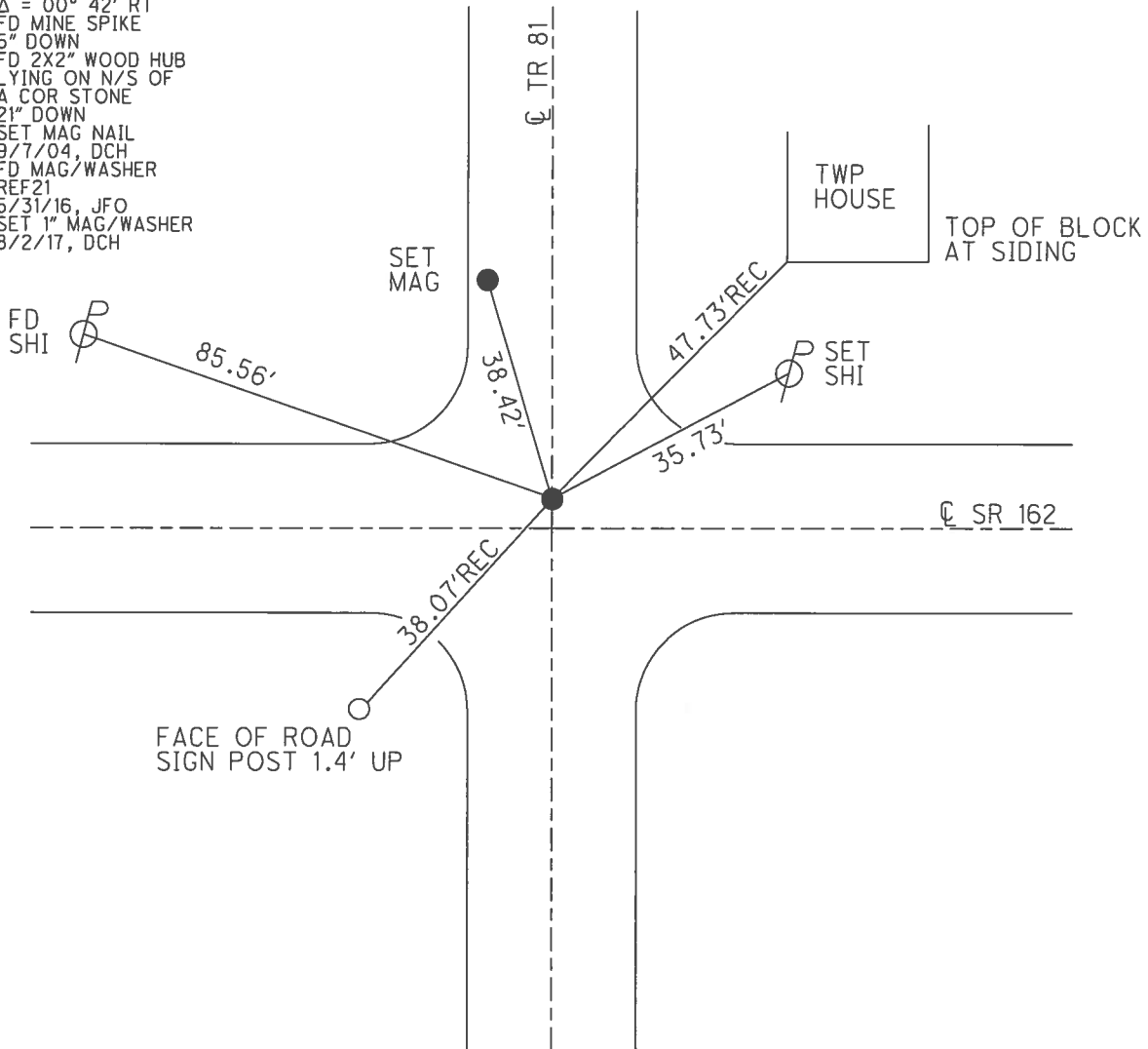
PERSONNEL _____ REFERENCE NO. 21 SHEET 23 OF 32
 NOTES POORE _____ DATE 8/2/17 ROUTE SR 162
 H.C. HOMAN _____ WEATHER SUNNY COUNTY SENECA
 R.C. CARSON _____ TEMP. 75° TOWNSHIP REED
 RHOADES _____ SECTION 16
 T 2 N R 17 E

TYPE MONUMENT MAG/WASHER
 ON SURFACE - ~~BELOW~~ ON
 LEFT - ☉ PAV'T - ~~RIGHT~~ 4'
 - TO - EDGE PAVEMENT
 S.L.M. 322+30



GRID: NORTHING: 531410.747 EASTING: 1858279.137

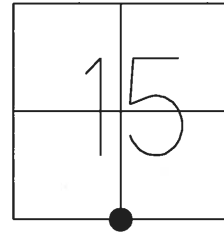
RECORD: P.I.
 $\Delta = 00^\circ 42' RT$
 FD MINE SPIKE
 5" DOWN
 FD 2X2" WOOD HUB
 LYING ON N/S OF
 A COR STONE
 21" DOWN
 SET MAG NAIL
 9/7/04, DCH
 FD MAG/WASHER
 REF21
 5/31/16, JFO
 SET 1" MAG/WASHER
 8/2/17, DCH



O.D.O.T. DISTRICT 2 SURVEY OFFICE (USE ONLY)

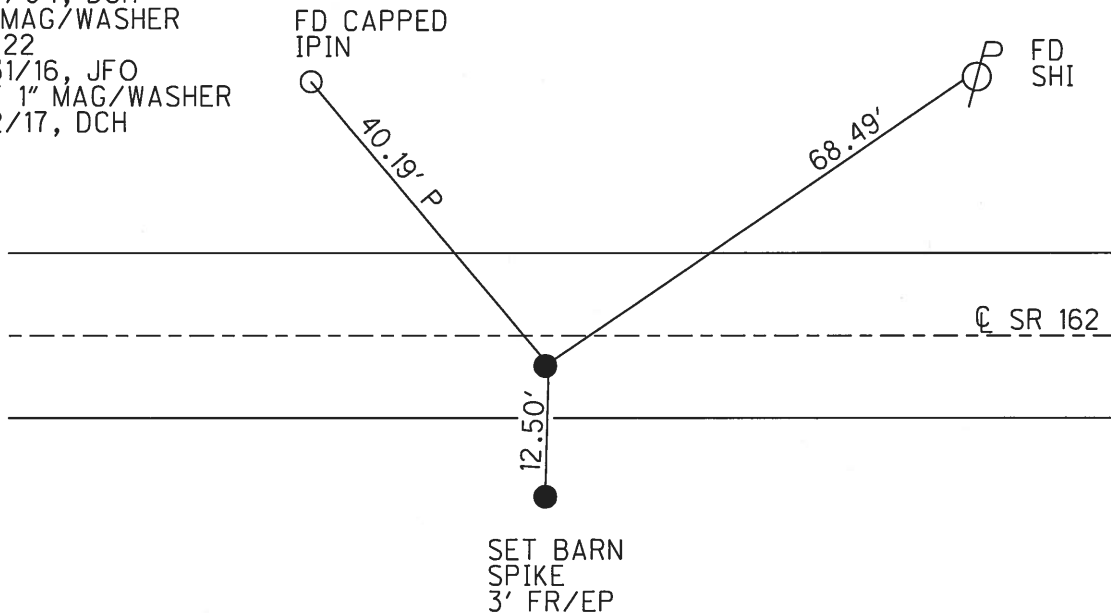
PERSONNEL _____ REFERENCE NO. 22 SHEET 24 OF 32
 NOTES POORE _____ DATE 8/2/17 ROUTE SR 162
 H.C. HOMAN _____ WEATHER SUNNY COUNTY SENECA
 R.C. CARSON _____ TEMP. 77° TOWNSHIP REED
 _____ RHOADES _____ SECTION 15
 _____ T 2 N R 17 E

TYPE MONUMENT MAG/WASHER
 ON SURFACE - ~~BELOW~~ ON
~~LEFT~~ - ℄ PAV'T - RIGHT 2'
TO - EDGE PAVEMENT
 S.L.M. 349+19



GRID: NORTHING: 537371.063 EASTING: 1860966.065

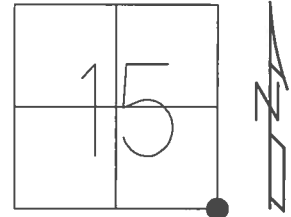
RECORD: P.I.
 STA. 506+18.33
 1947 PLAN
 $\Delta = 00^\circ 08' RT$
 1979
 FD P.K./WASHER
 1 1/2" DOWN OVER
 SM.R.R.SPIKE
 3 1/2" DOWN
 2004
 SET MAG NAIL
 9/7/04, DCH
 FD MAG/WASHER
 REF22
 5/31/16, JFO
 SET 1" MAG/WASHER
 8/2/17, DCH



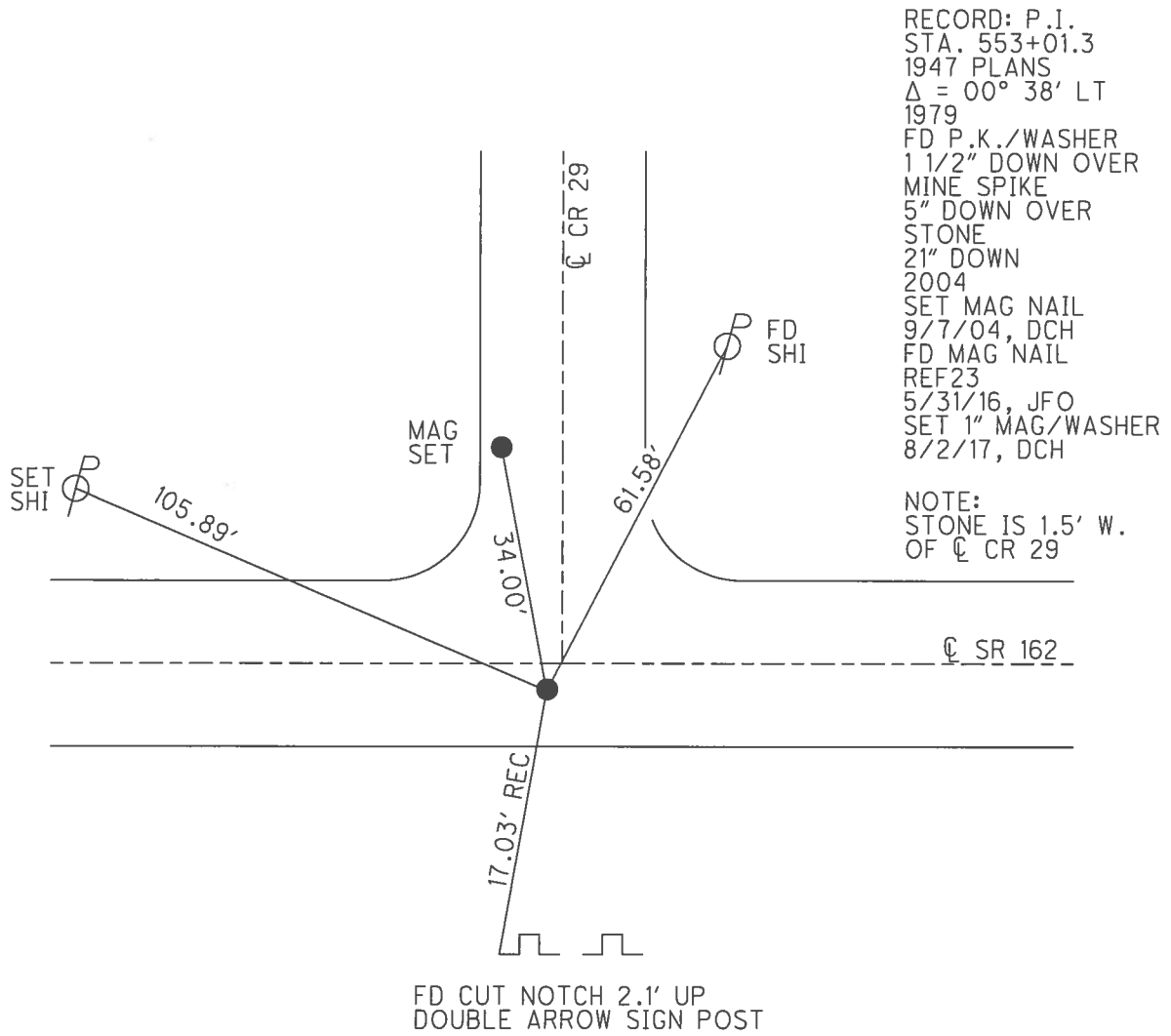
O.D.O.T. DISTRICT 2 SURVEY OFFICE (USE ONLY)

PERSONNEL _____ REFERENCE NO. 23 SHEET 25 OF 32
 NOTES POORE _____ DATE 8/2/17 ROUTE SR 162
 H.C. HOMAN _____ WEATHER SUNNY COUNTY SENECA
 R.C. CARSON _____ TEMP. 77° TOWNSHIP REED
 RHOADES _____ SECTION 15
 T 2 N R 17 E

TYPE MONUMENT MAG/WASHER
 ON SURFACE - ~~BELOW~~ ON _____
~~LEFT~~ - ϕ PAV'T - RIGHT 1'
 - TO - EDGE PAVEMENT
 S.L.M. 376+05



GRID: NORTHING: 531336.694 EASTING: 1863649.441



O.D.O.T. DISTRICT 2 SURVEY OFFICE (USE ONLY)

PERSONNEL _____ REFERENCE NO. 24 SHEET 26 OF 32

NOTES HOMAN DATE 7/14/04 ROUTE SR 162

H.C. BARNHISEL WEATHER CLOUDY COUNTY SENECA

R.C. CANTERBURY TEMP. 70° TOWNSHIP REED

SECTION 14

T 2 N R 17 E

TYPE MONUMENT R.R.SPIKE

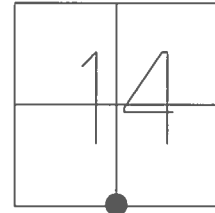
ON SURFACE - BELOW -

LEFT - ☉ PAV'T - RIGHT -

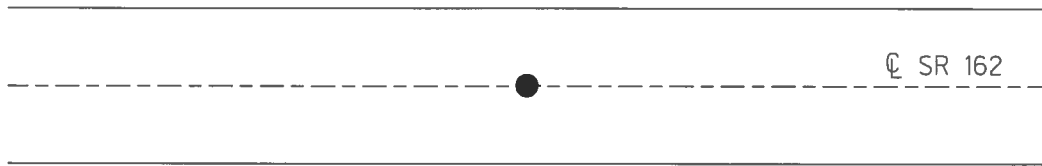
- TO - EDGE PAVEMENT

S.L.M. 401+75

GRID: NORTHING: _____ EASTING: _____



RECORD: P.I.
 $\Delta = 01^{\circ} 30' RT$
D.N.F.
7/14/04, J.L.C.

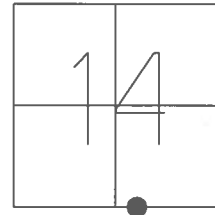


O.D.O.T. DISTRICT 2 SURVEY OFFICE (USE ONLY)

PERSONNEL _____ REFERENCE NO. 25 SHEET 27 OF 32

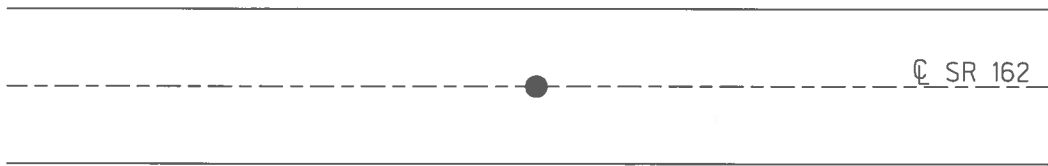
NOTES HOMAN DATE 7/14/04 ROUTE SR 162
H.C. BARNHEISEL WEATHER CLOUDY COUNTY SENECA
R.C. CANTERBURY TEMP. 70° TOWNSHIP REED
SECTION 14
T 2 N R 17 E

TYPE MONUMENT R.R.SPIKE
ON SURFACE - BELOW -
LEFT - ☉ PAV'T - RIGHT -
- TO - EDGE PAVEMENT
S.L.M. 409+75



GRID: NORTHING: _____ EASTING: _____

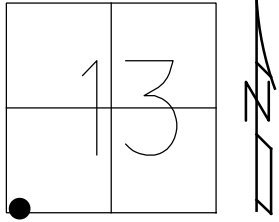
RECORD:
D.N.F.
7/14/04, J.L.C.



O.D.O.T. DISTRICT 2 SURVEY OFFICE (USE ONLY)

PERSONNEL _____ REFERENCE NO. 26 SHEET 28 OF 32
 NOTES POORE DATE 8/2/17 ROUTE SR 162
 H.C. HOMAN WEATHER SUNNY COUNTY SENECA
 R.C. CARSON TEMP. 77° TOWNSHIP REED
 _____ RHOADES SECTION 13
 DWG BY RHOADES PID PAVETRAIN T 2 N R 17 E

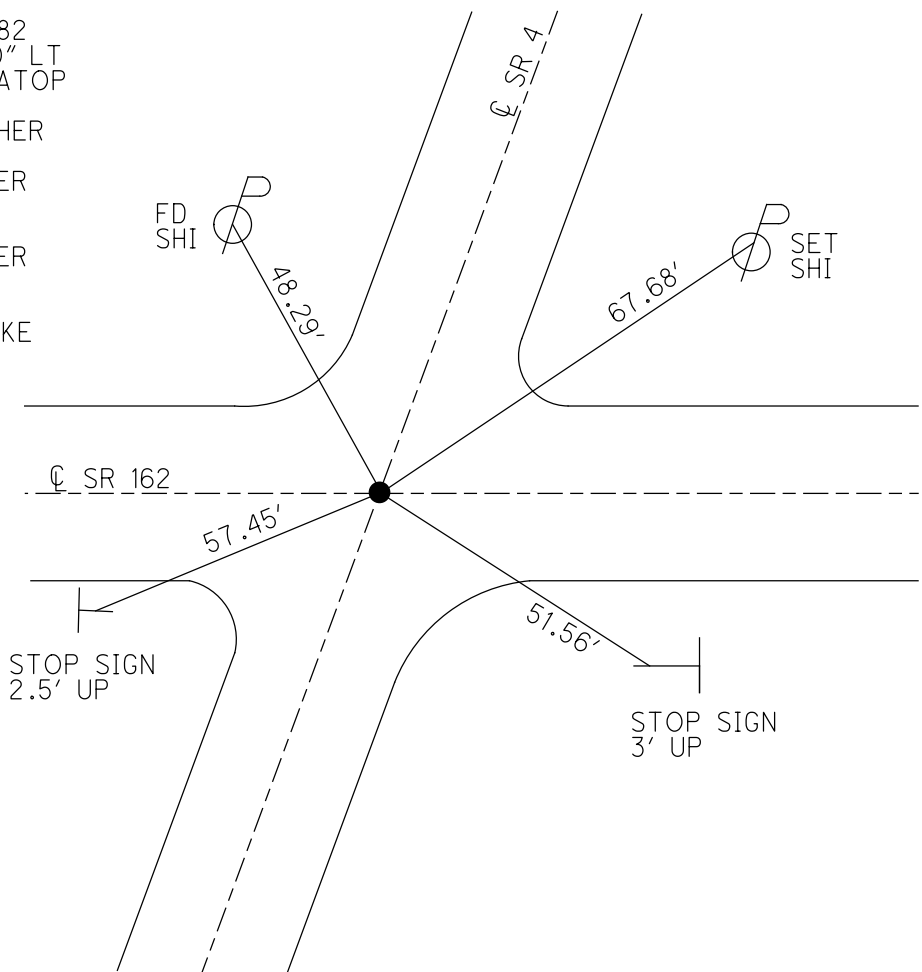
TYPE MONUMENT SM.R.R.SPIKE
~~ON SURFACE~~ - BELOW 2"
 OFFSET \odot PAVEMENT ON _____ LT : RT
 - _____ TO - _____ EDGE PAVEMENT
 STATION: 433+75



HORZ.DATUM: NAD83 2011 GEOID: 2012A
 GRID: NORTHING: 531266.125 EASTING: 1869418.741

RECORD: P.I.
 5/21/1987
 STA. 506+20.82
 $\Delta = 00^{\circ}05' 30''$ LT
 P.K./WASHER ATOP
 R.R.SPK.
 SET P.K./WASHER
 7/2/01, BWC
 FD P.K./WASHER
 SV13612
 9/16/09 KPM
 FD P.K./WASHER
 REF20
 3/12/13, SDC
 FD SM.R.R.SPIKE
 REF20
 6/1/15, JFO
 FD R.R.SPIKE
 2" DOWN
 REF26
 5/31/16, JFO
 8/19/19, JFO
 1/20/23, JMR

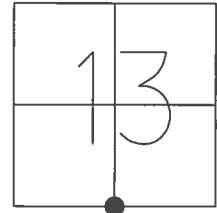
NOTE: SR 4 REF 20



O.D.O.T. DISTRICT 2 SURVEY OFFICE (USE ONLY)

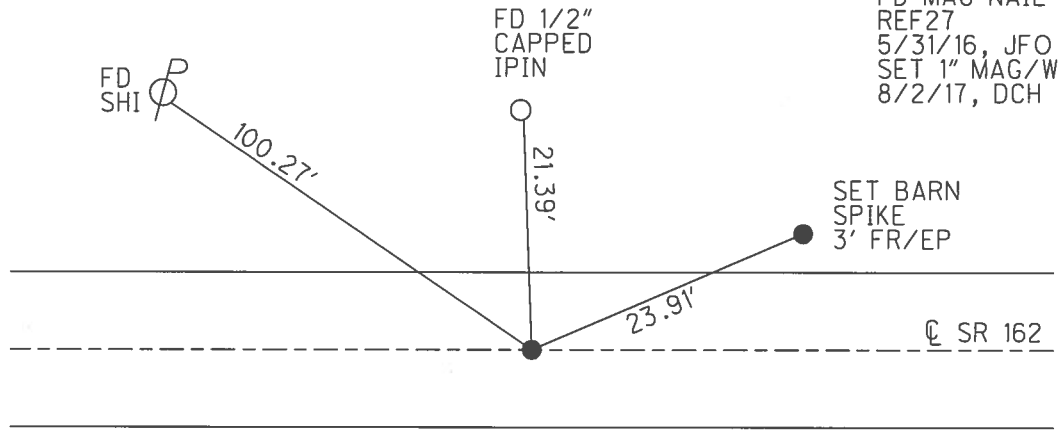
PERSONNEL _____ REFERENCE NO. 27 SHEET 29 OF 32
 NOTES POORE _____ DATE 8/2/17 ROUTE SR 162
 H.C. HOMAN _____ WEATHER SUNNY COUNTY SENECA
 R.C. CARSON _____ TEMP. 77° TOWNSHIP REED
 RHOADES _____ SECTION 13
 T 2 N R 17 E

TYPE MONUMENT _____ MAG/WASHER _____
 ON SURFACE - ~~BELOW~~ _____ ON _____
 LEFT - ☉ PAV'T - RIGHT _____ ON _____
 - _____ TO - _____ EDGE PAVEMENT
 S.L.M. 454+27



GRID: NORTHING: 531222.680 EASTING: 1871473.820

RECORD:
 FR R.R. SPIKE
 10" DOWN
 7/14/01, DCH
 SET MAG NAIL
 9/7/04, DCH
 FD MAG NAIL
 REF27
 5/31/16, JFO
 SET 1" MAG/WASHER
 8/2/17, DCH



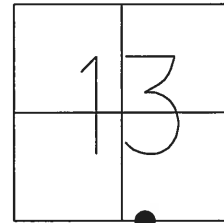
SET BARN
 SPIKE
 3' FR/EP

O.D.O.T. DISTRICT 2 SURVEY OFFICE (USE ONLY)

PERSONNEL _____ REFERENCE NO. 28 SHEET 30 OF 32

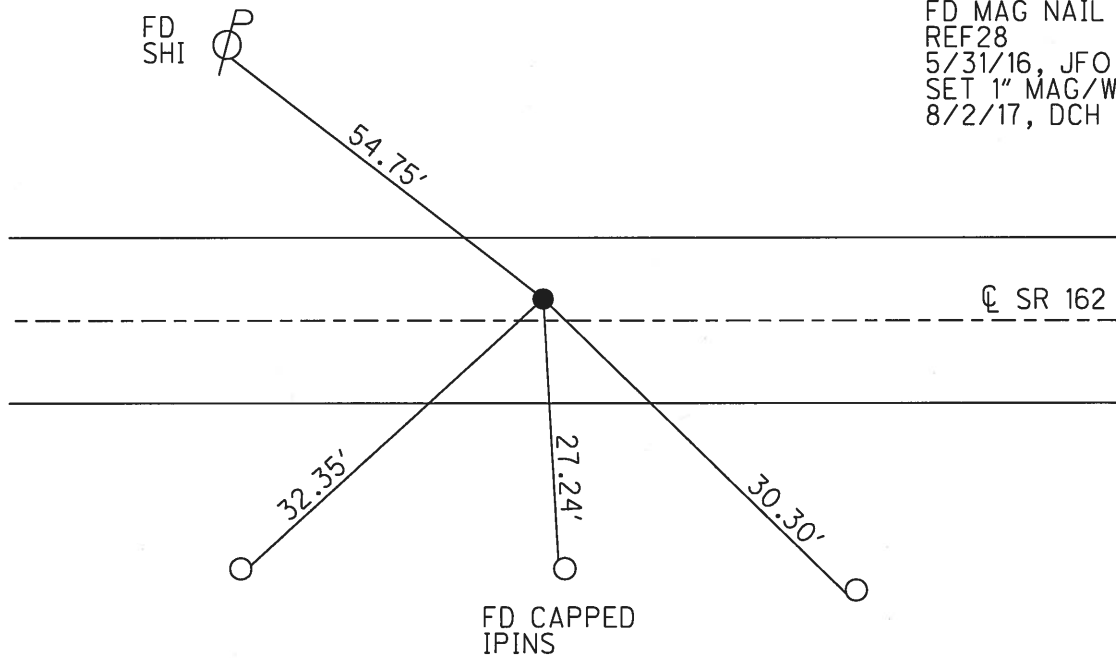
NOTES POORE _____ DATE 8/2/17 ROUTE SR 162
 H.C. HOMAN _____ WEATHER SUNNY COUNTY SENECA
 R.C. CARSON _____ TEMP. 79° TOWNSHIP REED
 RHOADES _____ SECTION 13
 T 2 N R 17 E

TYPE MONUMENT _____ MAG/WASHER _____
 ON SURFACE - ~~BELOW~~ ON _____
 LEFT - ℄ PAV'T - ~~RIGHT~~ 2.5' _____
 - TO - EDGE PAVEMENT _____
 S.L.M. 469+90



GRID: NORTHING: 531200.536 EASTING: 1873049.488

RECORD:
 FD 1/2" IPIN
 7 1/4" DOWN
 7/14/04, DCH
 SET MAG NAIL
 9/7/04, DCH
 FD MAG NAIL
 REF28
 5/31/16, JFO
 SET 1" MAG/WASHER
 8/2/17, DCH



O.D.O.T. DISTRICT 2 SURVEY OFFICE (USE ONLY)

PERSONNEL

REFERENCE NO. 29

SHEET 31 OF 32

NOTES MILLER

DATE 12/28/23

ROUTE SR 162

H.C. RHOADES

WEATHER RAIN

COUNTY SENECA

R.C. MILLER

TEMP. 44°

TOWNSHIP REED

DWG BY RHOADES

PID PAVING TRAIN

SECTION 13

T 2 N R 17 E

TYPE MONUMENT MAG/WASHER

ON SURFACE - BELOW ON

OFFSET C PAVEMENT 1' LT : RT

- TO - EDGE PAVEMENT

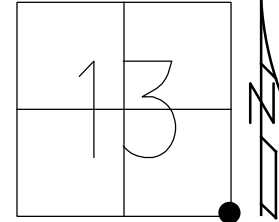
STATION: 482+07

HORZ.DATUM: NAD83 2011

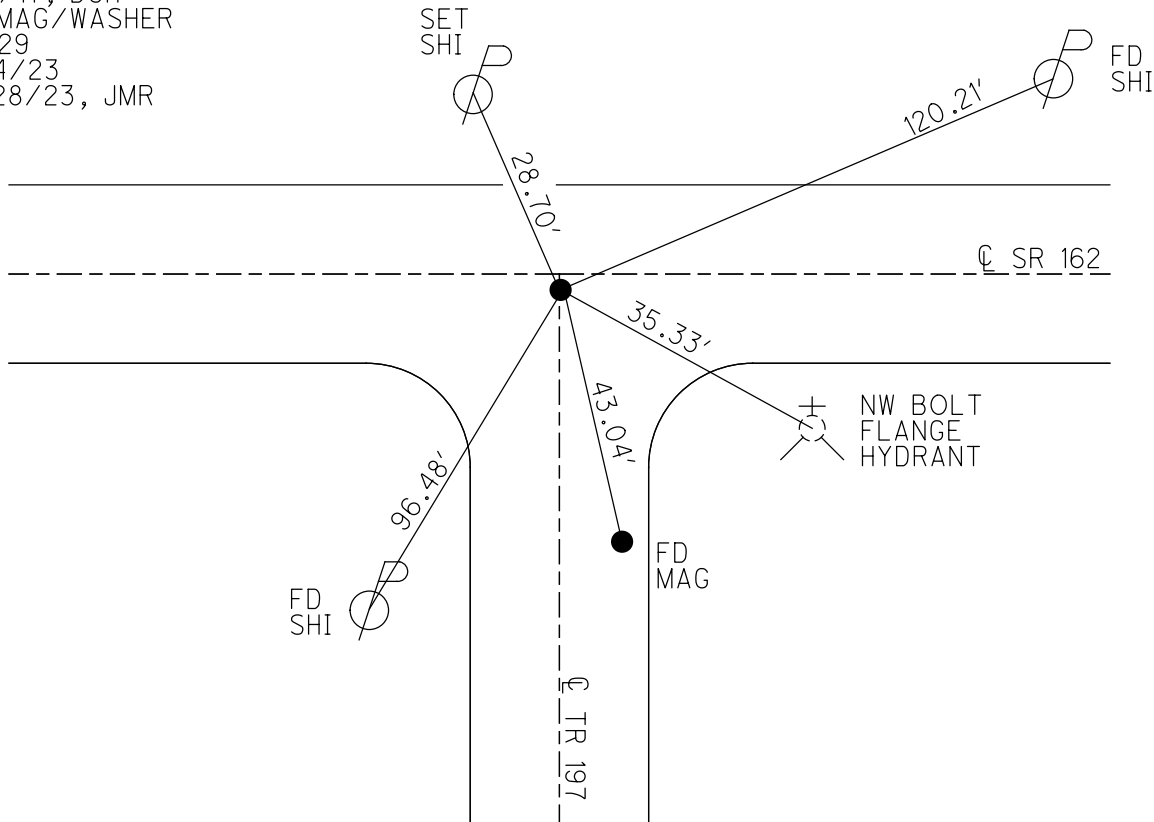
GEOID: NAVD88 2018

GRID: NORTHING: 531181.406

EASTING: 1874284.448



RECORD: P.I.
 $\Delta = 00^{\circ} 33' \text{ LT}$
 SET MAG NAIL
 9/7/04, DCH
 FD MAG NAIL
 REF29
 5/31/16, JFO
 SET MAG/WASHER
 8/2/17, DCH
 FD MAG/WASHER
 REF29
 9/14/23
 12/28/23, JMR



O.D.O.T. DISTRICT 2 SURVEY OFFICE (USE ONLY)

PERSONNEL _____ REFERENCE NO. 30 SHEET 32 OF 32
 NOTES HOMAN _____ DATE 7/14/04 ROUTE SR 162
 H.C. BARNHISEL _____ WEATHER CLOUDY COUNTY SENECA
 R.C. CANTERBURY _____ TEMP. 70° TOWNSHIP REED
 _____ SECTION 18
 _____ T 2 N R 18 E

TYPE MONUMENT _____ CORNER STONE _____
 ON SURFACE - ~~BELOW~~ _____ ON _____
~~LEFT~~ - C PAV'T - RIGHT 25.1' _____
13.9' TO RT EDGE PAVEMENT _____
 S.L.M. 502+12.8 _____
 GRID: NORTHING: _____ EASTING: _____

