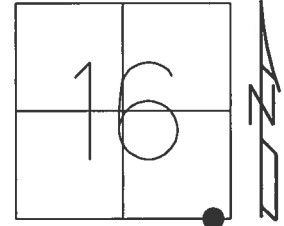


O.D.O.T. DISTRICT 2 SURVEY OFFICE (USE ONLY)

PERSONNEL _____ REFERENCE NO. 1 SHEET 1 OF 32
 NOTES RHOADES DATE 8/1/17 ROUTE SR 162
 H.C. HOMAN WEATHER SUNNY COUNTY SENECA
 R.C. CARSON TEMP. 70° TOWNSHIP SCIPIO
 _____ POORE _____ SECTION 16
 _____ T 2 N R 16 E

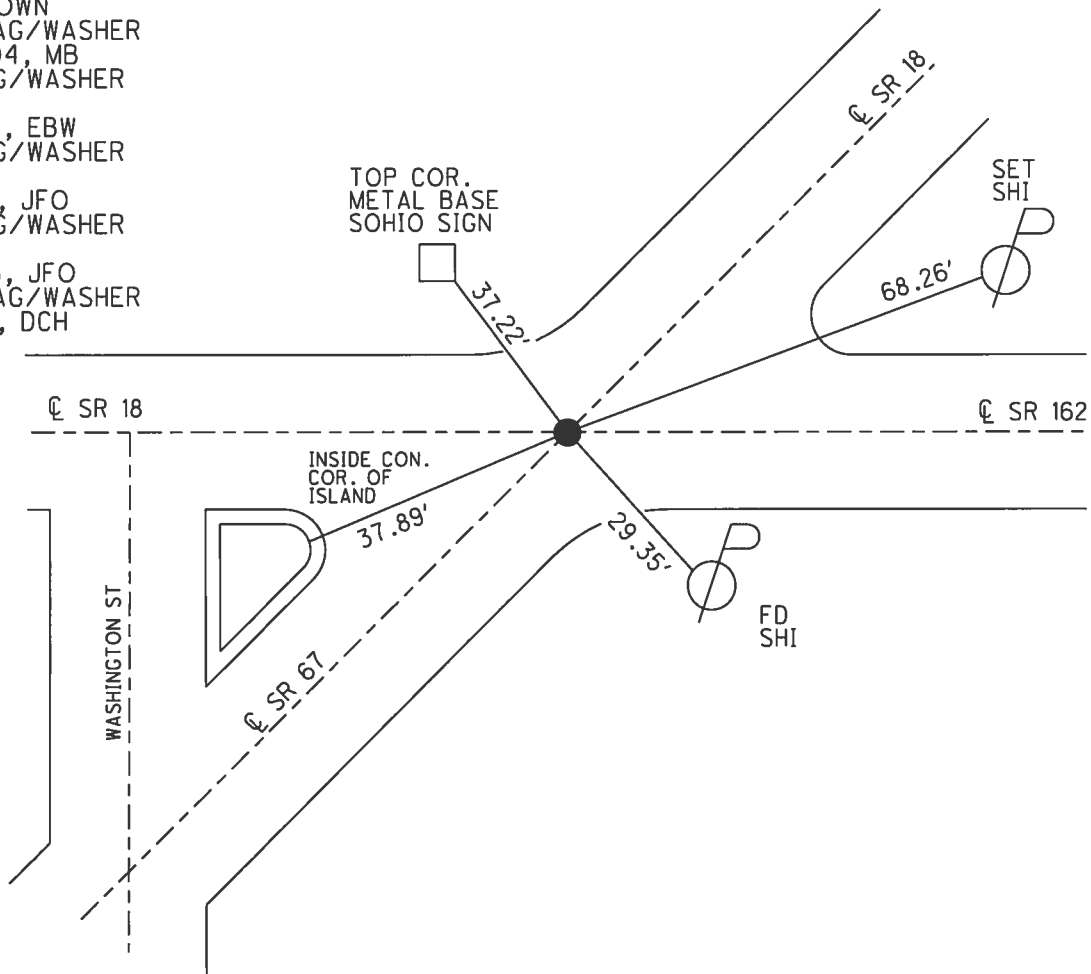
TYPE MONUMENT MAG/WASHER
 ON SURFACE - ~~BELOW~~ ON _____
 LEFT - ☉ PAV'T - ~~RIGHT~~ 1.5'
12' TO LT EDGE PAVEMENT
 S.L.M. 0+00



Grid: Northing: 531607.876 Easting: 1826098.508

RECORD:
 FD MINE SPIKE
 3.5" DOWN ATOP
 5/8" IPIN
 6.5" DOWN
 SET MAG/WASHER
 8/18/04, MB
 FD MAG/WASHER
 REF71
 5/7/14, EBW
 FD MAG/WASHER
 REF1
 1/8/16, JFO
 FD MAG/WASHER
 REF29
 2/5/16, JFO
 SET MAG/WASHER
 8/1/17, DCH

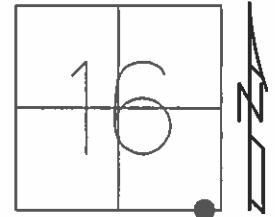
NOTE:
 SR 18=REF 71
 SR 67=REF 29



O.D.O.T. DISTRICT 2 SURVEY OFFICE (USE ONLY)

PERSONNEL _____ REFERENCE NO. 1 SHEET 1 OF 32
 NOTES RHOADES DATE 7-8-15 ROUTE SR 162
 H.C. O'DONNELL WEATHER SUNNY COUNTY SENECA
 R.C. HOMAN TEMP. 61°F TOWNSHIP SCIPIO
 SECTION 16
 T 2 N R 16 E

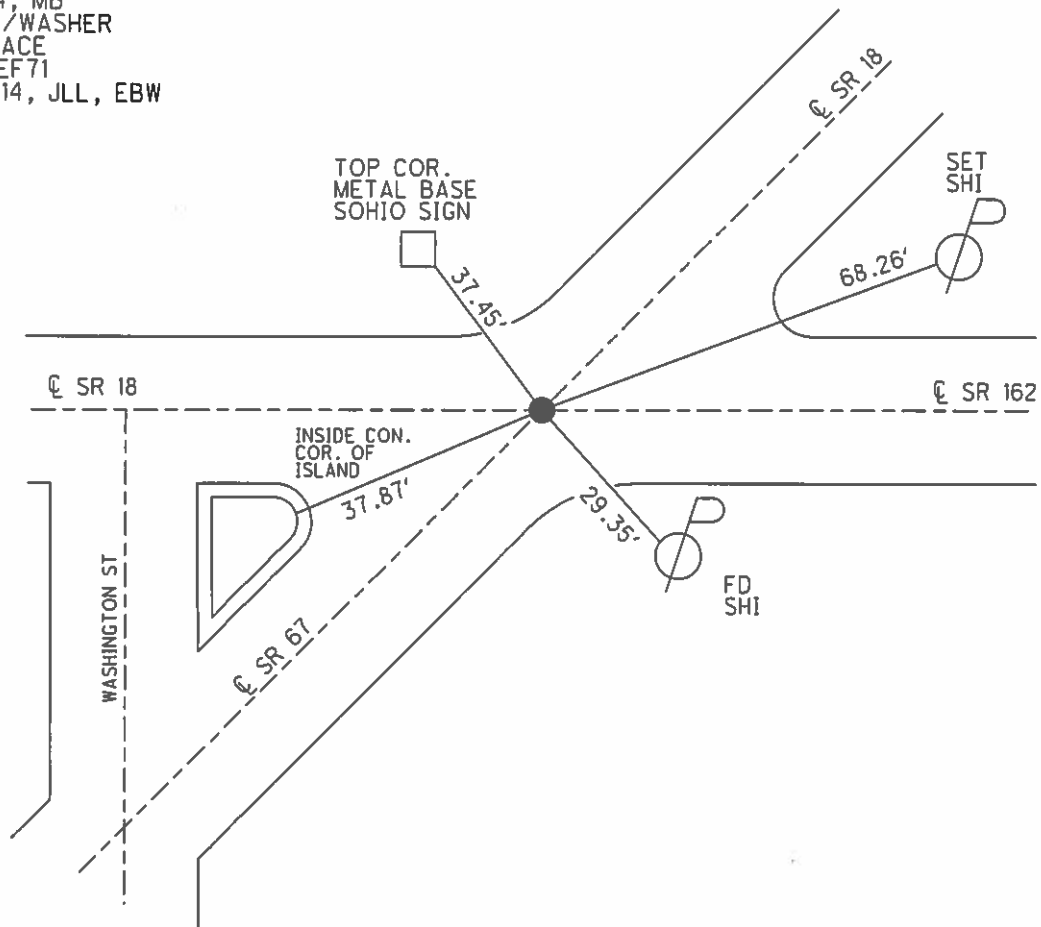
TYPE MONUMENT MAG/WASHER
 ON SURFACE - ~~BELOW~~ ON _____
 LEFT - ☉ PAV'T - ~~RIGHT~~ 1.5'
12' TO LT EDGE PAVEMENT
 S.L.M. 0+00



Grid: Northing: 531607.8899 Easting: 1826098.4816

RECORD:
 FD MINE SPIKE 3.5" BELOW
 ATOP 5/8" IRON PIN 6.5" BELOW
 SET MAG/WASHER
 8-18-04, MB
 FD MAG/WASHER
 @ SURFACE
 GPS, REF71
 05-07-14, JLL, EBW

NOTE:
 SR 18=REF 71
 SR 67=REF 29



O.D.O.T. DISTRICT 2 SURVEY OFFICE

/ OF 30

of
SR
162

PERSONNEL

SR 18 = 71

1 ON SR 162

REFERENCE NO. 29

SHEET 3 OF 3

NOTES HOMAN

DATE 4-15-04

ROUTE SR 67

H.C. NUHFER

WEATHER SUNNY

COUNTY SENECA

R.C. ARMS

TEMP. 55°

TOWNSHIP SCIPIO

SECTION 16-21

T 2 N R 16 E

TYPE MONUMENT SEE BELOW

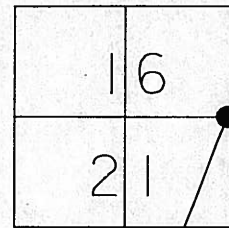
ON SURFACE - BELOW SEE BELOW

LEFT - ~~C~~ PAVT - ~~RIGHT~~ 1.5' LT

TO EDGE PAVEMENT

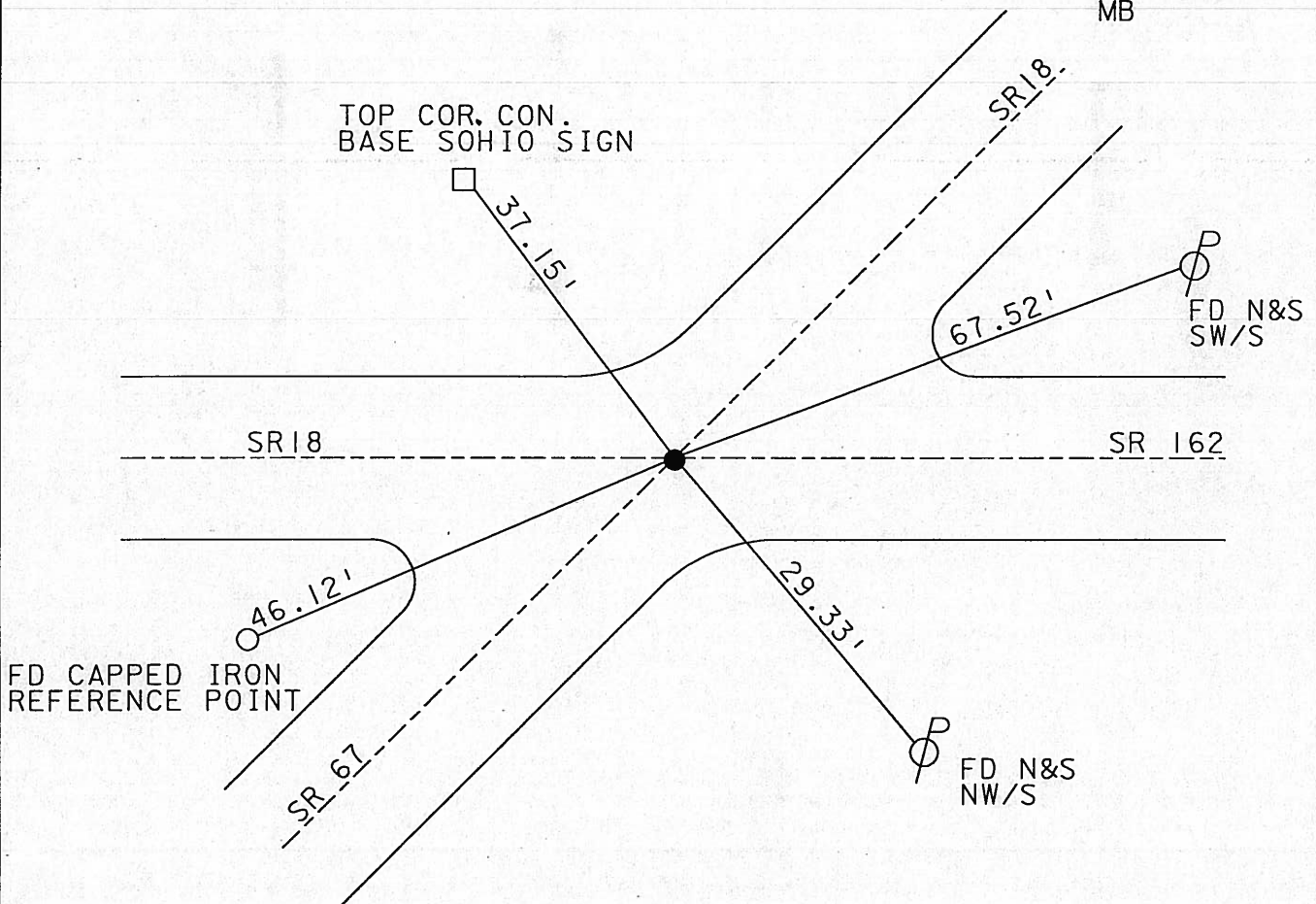
S.L.M. 584+84 ± ON SR 67 ; 0+00 ON SR 162

1211+75 ON SR 18



5/8" IRON SPIKE 3 1/2" DOWN OVER A
5/8" IRON PIN 6 1/2" DOWN

SET MAG NAIL
& WASHER
8-18-04
MB



Resurfaced 2004 - cold. w. plates

O.D.O.T. DISTRICT 2 SURVEY OFFICE

PERSONNEL

Homan

REFERENCE NO. 1

SHEET 1 OF 30

NOTES

~~Ripple~~

H.C.

~~Bachour~~ Nuhfer

DATE ~~7-18-90~~ 4-15-04

ROUTE 162

R.C.

~~Geyman~~ Arms

WEATHER ~~Cloudy~~ Sunny

COUNTY Sen

TEMP. 50° 55°

TOWNSHIP 5c1 p10

SECTION

T2 N R 16 E

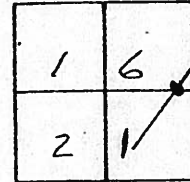
TYPE MONUMENT P.K. + Washer

ON SURFACE - BELOW Top of Mine Spike on

LEFT - & PAV'T. - RIGHT Top of Iron Pin E

TO EDGE PAVEMENT

S.L.M. 0 + 00



Fd Mine Spike 3 1/2" Down
Fd 5/8" Iron Pin 6 1/2" Down

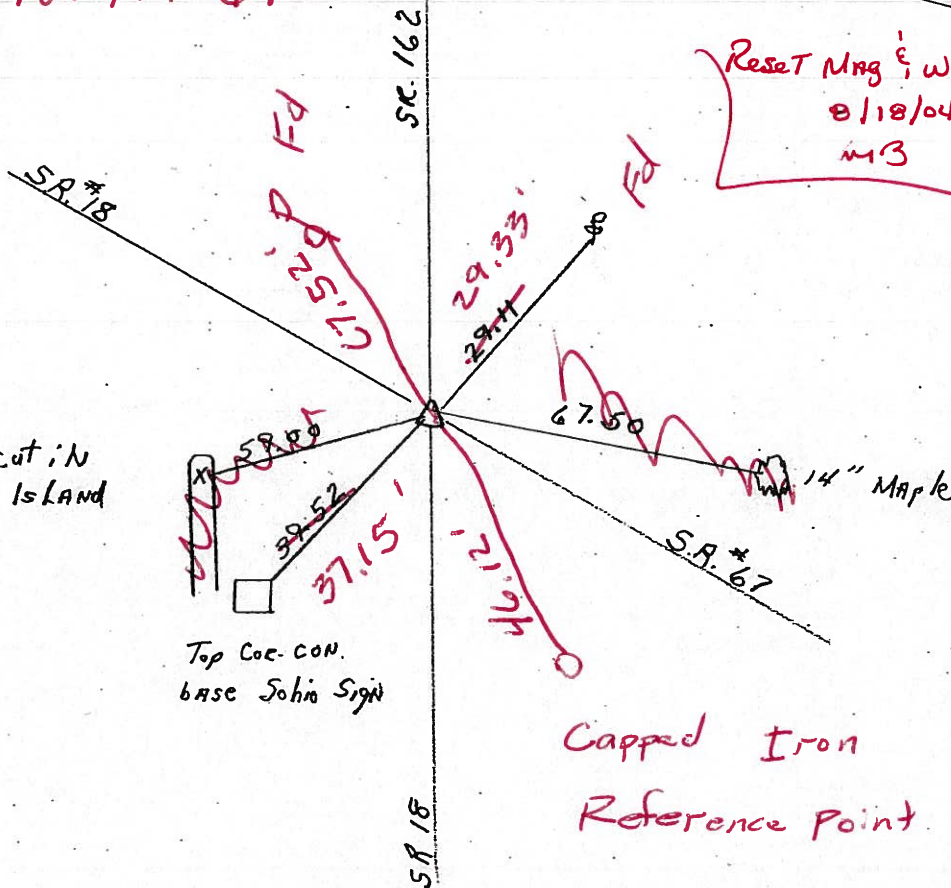


Reset Mag. & Washer
8/18/04
M3

x cut in
Pump Island

Top Cor. CON.
base John Sight

Capped Iron
Reference Point



Resurfaced 2004 - COO. W. PLACES.

O.D.O.T. DISTRICT 2 SURVEY OFFICE

PERSONNEL

REFERENCE NO. 71

SHEET 23 OF 24

NOTES CHENEY

H.C. RIPPLE

DATE 7-2-1993

ROUTE #18

R.C. BARBOUR

WEATHER CLOUDY

COUNTY SENECA

GEYMAN

TEMP. 85°

TOWNSHIP SCIPIO

SECTION 16 & 21

T2N R16 E

TYPE MONUMENT PK/WASHER

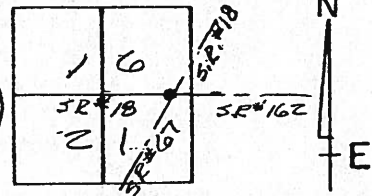
ON SURFACE - ~~BELOW~~ ON

~~LEFT~~ - PAV'T. - ~~RIGHT~~ ON & ALL S.R.'s (EXCEPT 2'S. OF & S.R.#162)

TO EDGE PAVEMENT

S.L.M. 1211+75

①



RECORD: 6-15-1971

P.I. STA. 397+02.33

$\Delta = 55^\circ 57' \text{ LT.}$

Fd. I. Rod 3" Down

SET SMALL SPR. ATOP

@ SURFACE

4" IN CONC.
PUMP ISLAND

N.E. COR. OF
STEEL BASE
"B.P." GAS
SIGN

SET NIS.
W. SIDE

Q. PAU'T S.R. #18

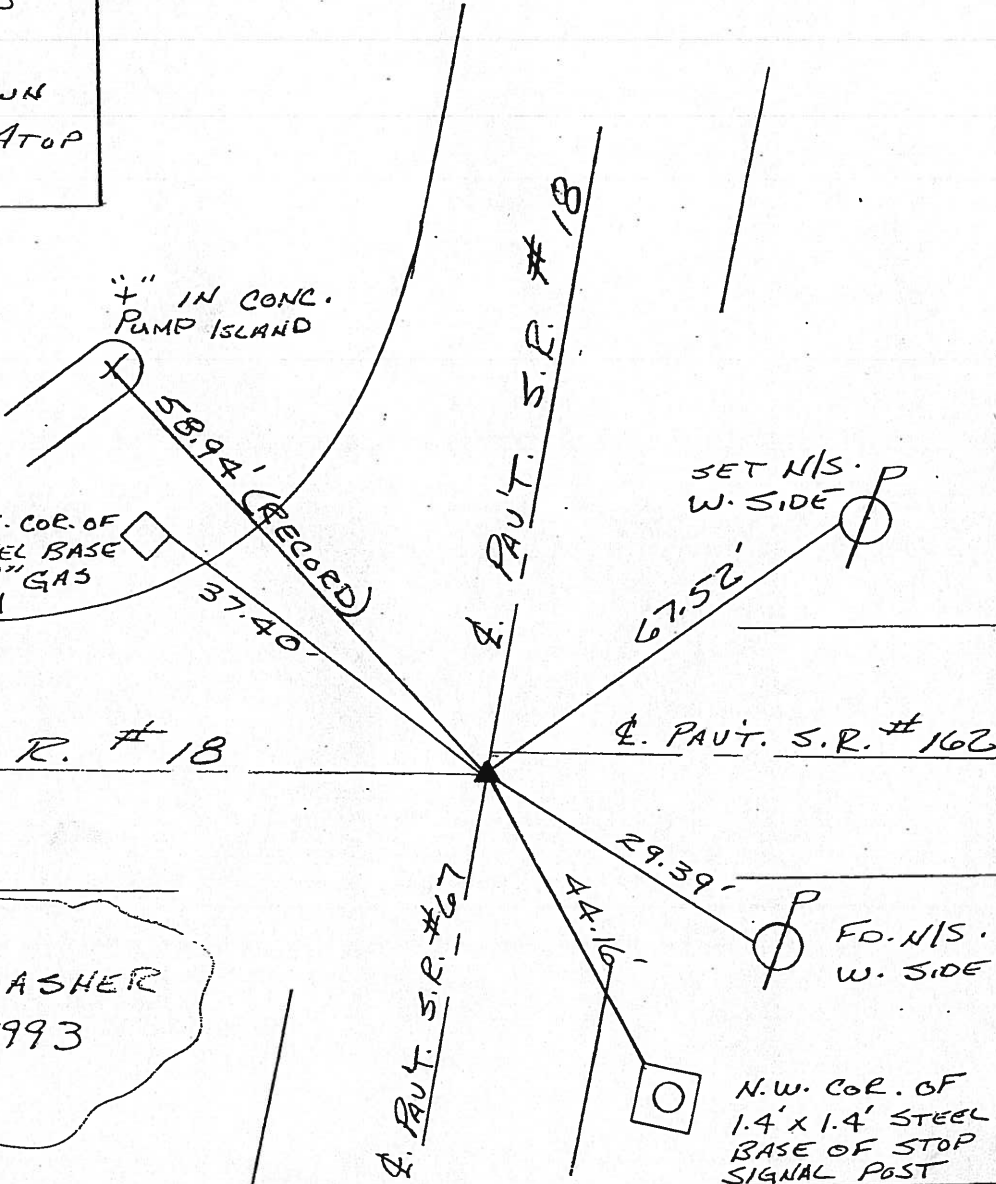
Q. PAU'T. S.R. #162

SET PK/WASHER
8-27-1993
RCC

Fd. NIS.
W. SIDE

N.W. COR. OF
1.4' x 1.4' STEEL
BASE OF STOP
SIGNAL POST

Q. PAU'T. S.R. #67



O.D.O.T. DISTRICT 2 SURVEY OFFICE

PERSONNEL _____

REFERENCE NO. 1

SHEET 1 OF 30

NOTES Pipple

H.C. BARbour

R.C. GeYMAN

DATE 7-18-90

WEATHER Cloudy

TEMP. 50°

ROUTE 162

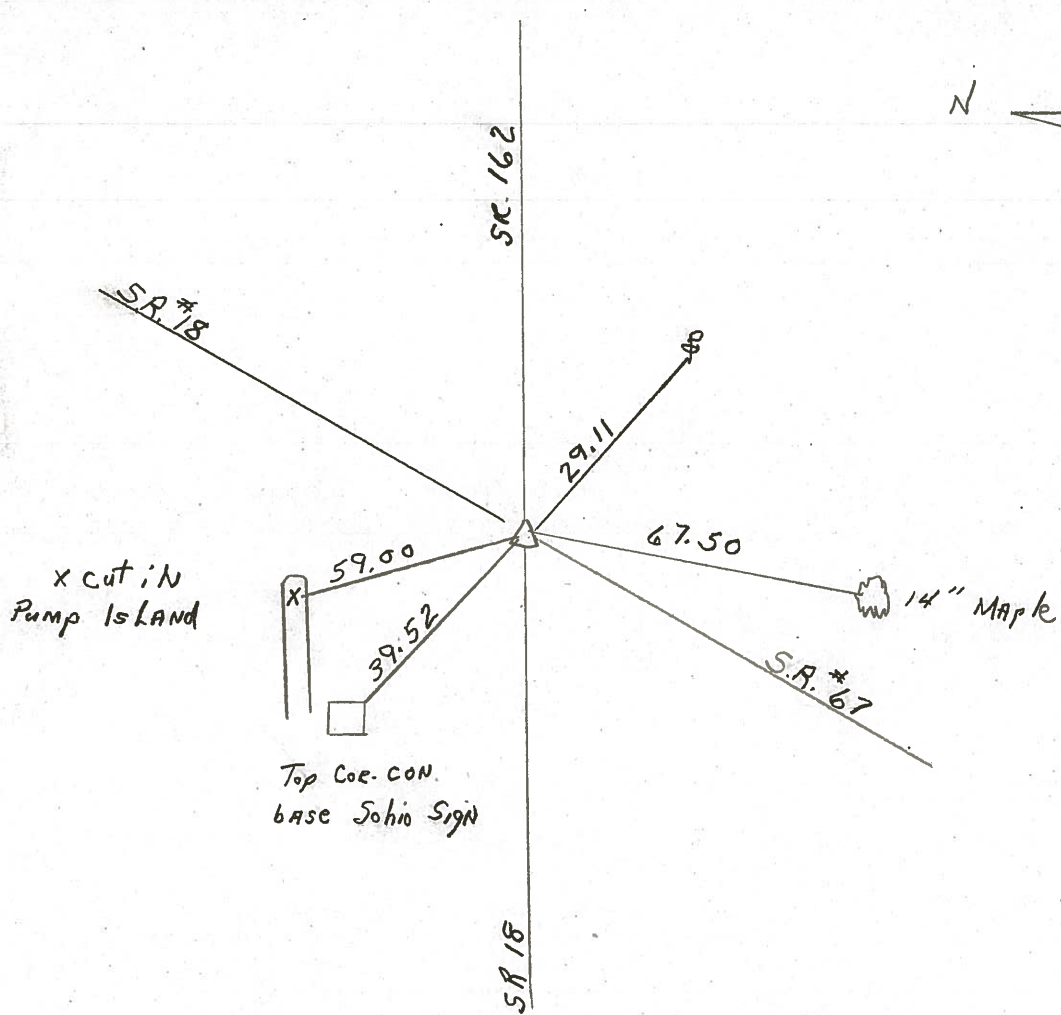
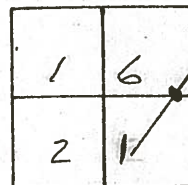
COUNTY Sen

TOWNSHIP Scipio

SECTION _____

T 2 N R 16 E

TYPE MONUMENT P.K. + Washer
 ON SURFACE - BELOW Top of Mine Spike
 LEFT - ☉ PAV'T. - RIGHT Top of IRON PIN
 TO EDGE PAVEMENT
 S.L.M. 0 + 00



x cut in
Pump Island

Top Cor. CON.
base Ohio Sign

County Seneca S.R. #162

Date 1/09/84

Township Scipio

Weather overcast

Section 15^e 16

Temp. 25°

T2N, R16E

Personnel Cronin

1	6
2	1

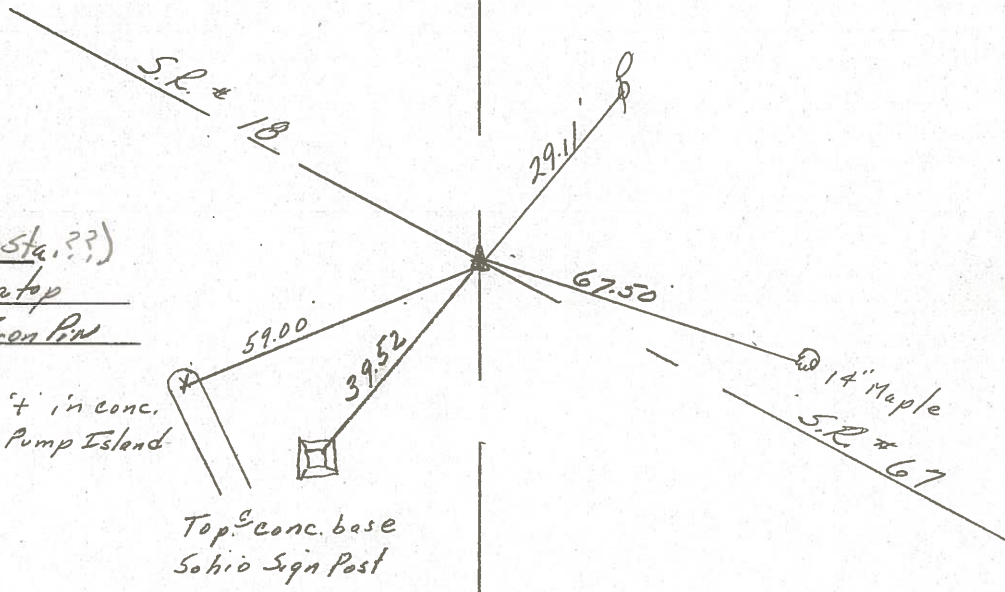
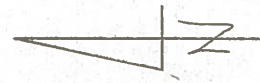


#1

Ripple

Geyman

Barbour



P.I.
397+07.33 (S.R.#18 Sta.??)
Found P.K. & washer atop
minespike atop Iron Pin

4' in conc.
Pump Island

Top of conc. base
Sohio Sign Post

S.S.R. # 162

County Seneca S.R. 162

Date 6-11-79

Township Sciprio

Weather Fair

Section 16

Temp. 65°

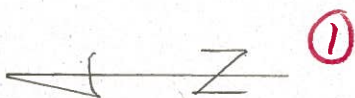
T2N, R16E

Personnel Schneider

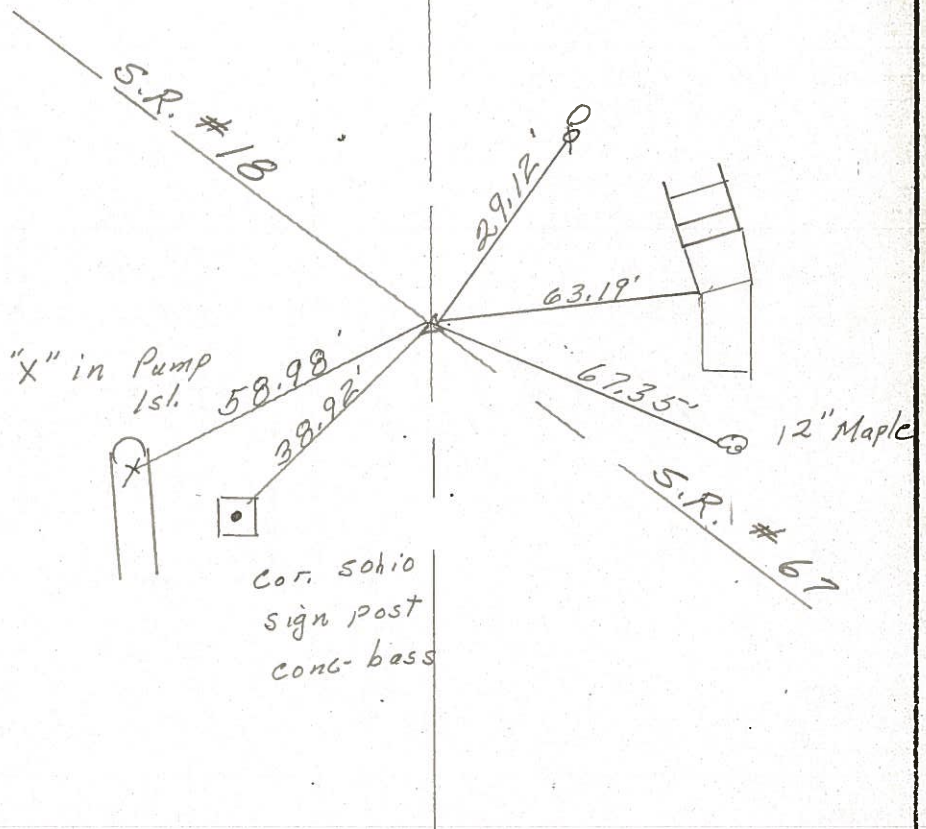
Mosser

Barbour

16	15
X	
21	22



§ S.R. # 162



P.I.

397+07.33

Fd. Iron Pin 3"

below surface set
small spk. atop &
to surface

(Copy; Page #11)
S.R. # 18 1978