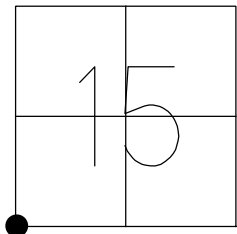


O.D.O.T. DISTRICT 2 SURVEY OFFICE (USE ONLY)

PERSONNEL \_\_\_\_\_ REFERENCE NO. 2 A SHEET 3 OF 32

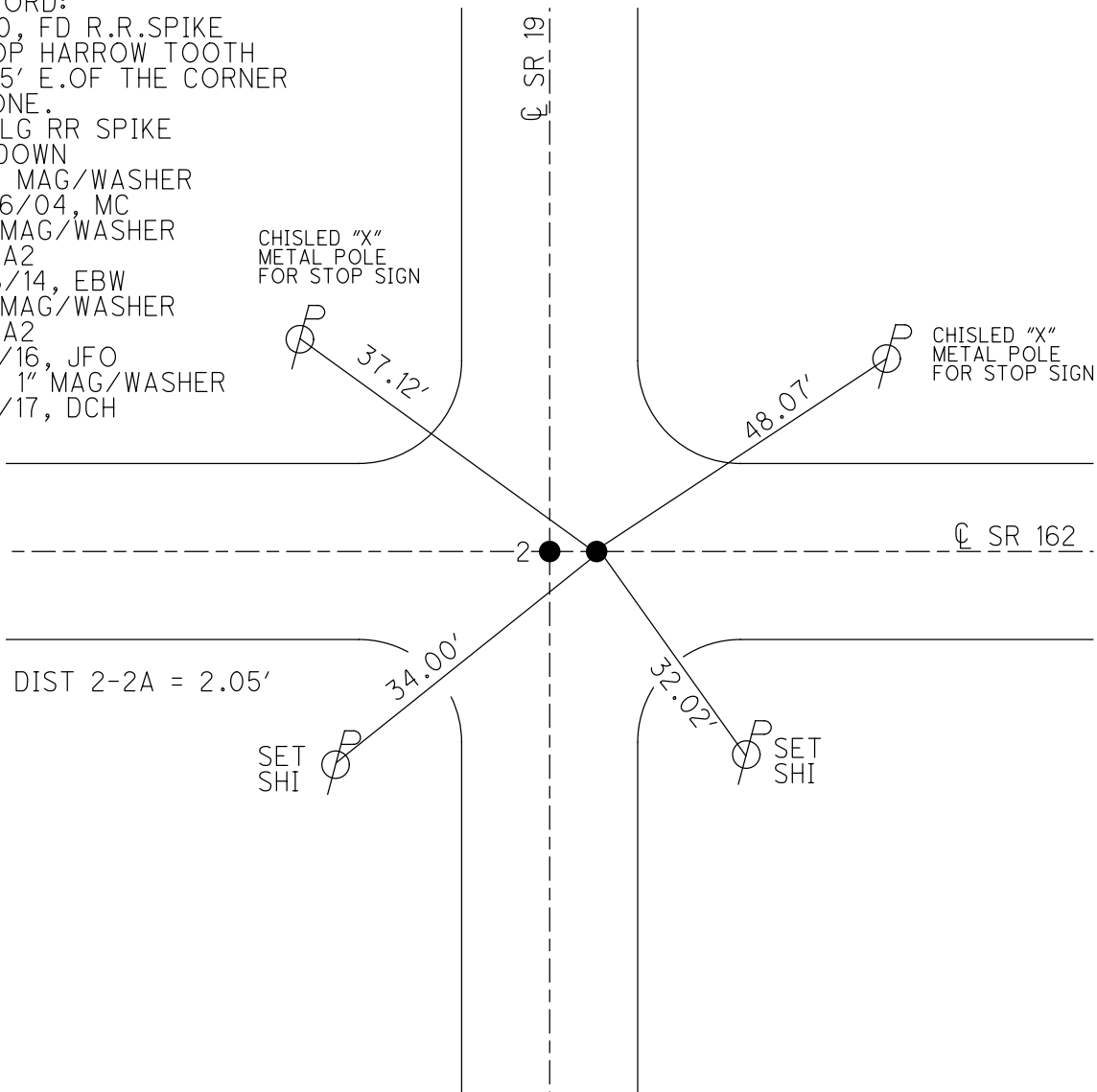
NOTES HOMAN \_\_\_\_\_ DATE 4/15/04 ROUTE SR 162  
 H.C. NUHFER \_\_\_\_\_ WEATHER SUNNY COUNTY SENECA  
 R.C. ARMS \_\_\_\_\_ TEMP. 65° TOWNSHIP SCIPIO  
 HOOKER \_\_\_\_\_ SECTION 15  
 T 2 N R 16 E

TYPE MONUMENT P.K./WASHER  
 ON SURFACE - ~~BELOW~~ ON \_\_\_\_\_  
~~LEFT~~ - CL PAV'T - RIGHT 2'  
 - TO - EDGE PAVEMENT  
 S.L.M. 3+75.05



GRID: NORTHING: 531608.622 EASTING: 1826469.606

RECORD:  
 1990, FD R.R.SPIKE  
 ATOP HARROW TOOTH  
 2.05' E.OF THE CORNER  
 STONE.  
 FD LG RR SPIKE  
 4" DOWN  
 SET MAG/WASHER  
 10/6/04, MC  
 FD MAG/WASHER  
 REFA2  
 5/8/14, EBW  
 FD MAG/WASHER  
 REFA2  
 1/8/16, JFO  
 SET 1" MAG/WASHER  
 8/1/17, DCH

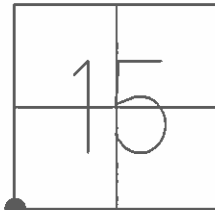


O.D.O.T. DISTRICT 2 SURVEY OFFICE (USE ONLY)

PERSONNEL \_\_\_\_\_ REFERENCE NO. 2 A SHEET 3 OF 32

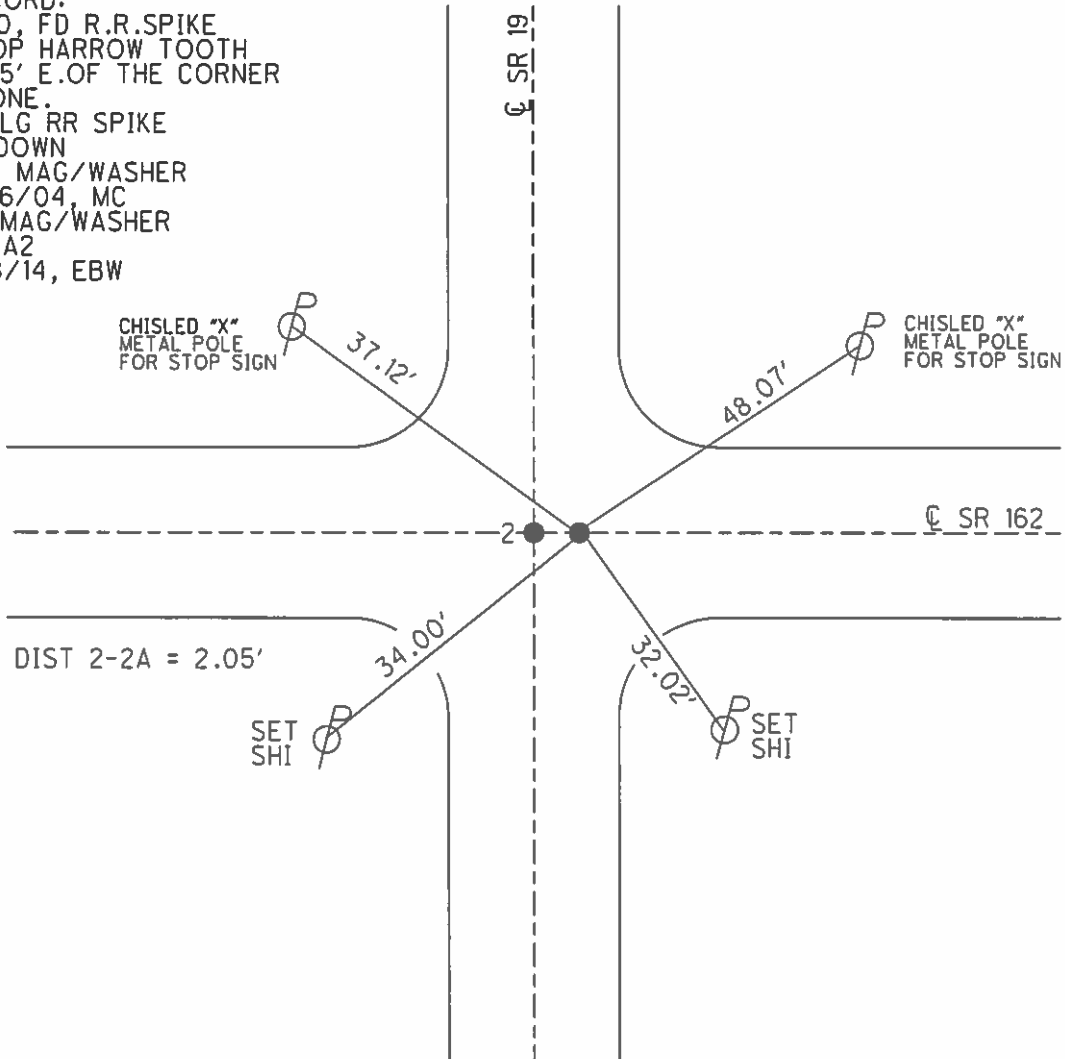
NOTES HOMAN \_\_\_\_\_ DATE 4/15/04 ROUTE SR 162  
 H.C. NUHFER \_\_\_\_\_ WEATHER SUNNY COUNTY SENECA  
 R.C. ARMS \_\_\_\_\_ TEMP. 65° TOWNSHIP SCIPIO  
 HOOKER \_\_\_\_\_ SECTION 15  
 T 2 N R 16 E

TYPE MONUMENT P.K./WASHER  
 ON SURFACE - ~~BELOW~~ ON \_\_\_\_\_  
~~LEFT~~ Q PAV'T - RIGHT 2'  
 - TO - EDGE PAVEMENT  
 S.L.M. 3+75.05



GRID: NORTHING: 531608.609 EASTING: 1826469.611

RECORD:  
 1990, FD R.R.SPIKE  
 ATOP HARROW TOOTH  
 2.05' E.OF THE CORNER  
 STONE.  
 FD LG RR SPIKE  
 4" DOWN  
 SET MAG/WASHER  
 10/6/04, MC  
 FD MAG/WASHER  
 REFA2  
 5/8/14, EBW



O.D.O.T. DISTRICT 2 SURVEY OFFICE

PERSONNEL

REFERENCE NO. 2

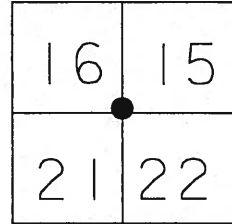
SHEET 2 OF 30

NOTES HOMAN  
 H.C. NUHFER  
 R.C. ARMS  
HOOKER

DATE 4-15-04  
 WEATHER SUNNY  
 TEMP. 65°

ROUTE SR 162  
 COUNTY SENECA  
 TOWNSHIP SCIPPIO  
 SECTION 15-16-21-22  
T 2 N R 16 E

TYPE MONUMENT PK & WASHER'S  
 ON SURFACE ~~BELOW~~ ON BOTH  
~~LEFT~~ - Q PAV'T - RIGHT A ON Q B 2' RT  
TO EDGE PAVEMENT  
 S.L.M. 3+73

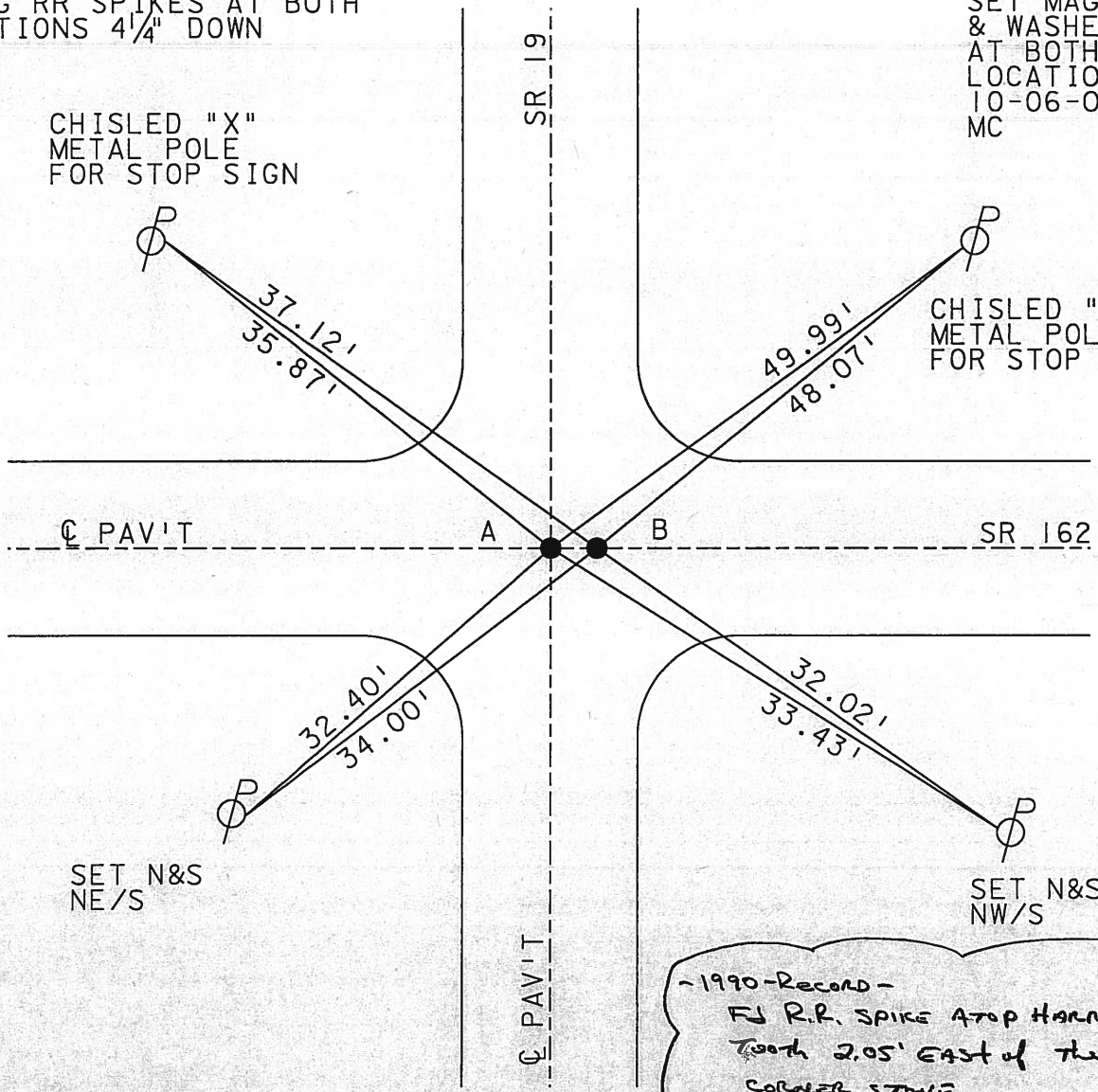


**2-A**

Notes:

FD LG RR SPIKES AT BOTH LOCATIONS 4 1/4" DOWN

SET MAG NAIL & WASHER AT BOTH LOCATIONS 10-06-04 MC



CHISLED "X" METAL POLE FOR STOP SIGN

CHISLED "X" METAL POLE FOR STOP SIGN

SET N&S NE/S

SET N&S NW/S

*-1990-Record-  
 FJ R.R. SPIKE ATOP HARNOW  
 2.05' EAST of the  
 CORNER STAKE.*

DIST A-B = 2.05'

# O.D.O.T. DISTRICT 2 SURVEY OFFICE

PERSONNEL Horton

REFERENCE NO. 2

SHEET 2 OF 30

NOTES Tripple

H.C. Baebeur Nutter

DATE 7-18-90 4-15-04

ROUTE 162

R.C. Gayman Arms

WEATHER Sunny

COUNTY Sen.

Hooker

TEMP. 65°

TOWNSHIP Scipio

SECTION 15-16-21-22

T 2 N R 16 E

TYPE MONUMENT P.K. + Washer

ON SURFACE - BELOW CORNER STONE 9" down

LEFT - C. PAV'T. - RIGHT 2' W of 2' PAVMT

TO EDGE PAVEMENT

S.L.M. 3473

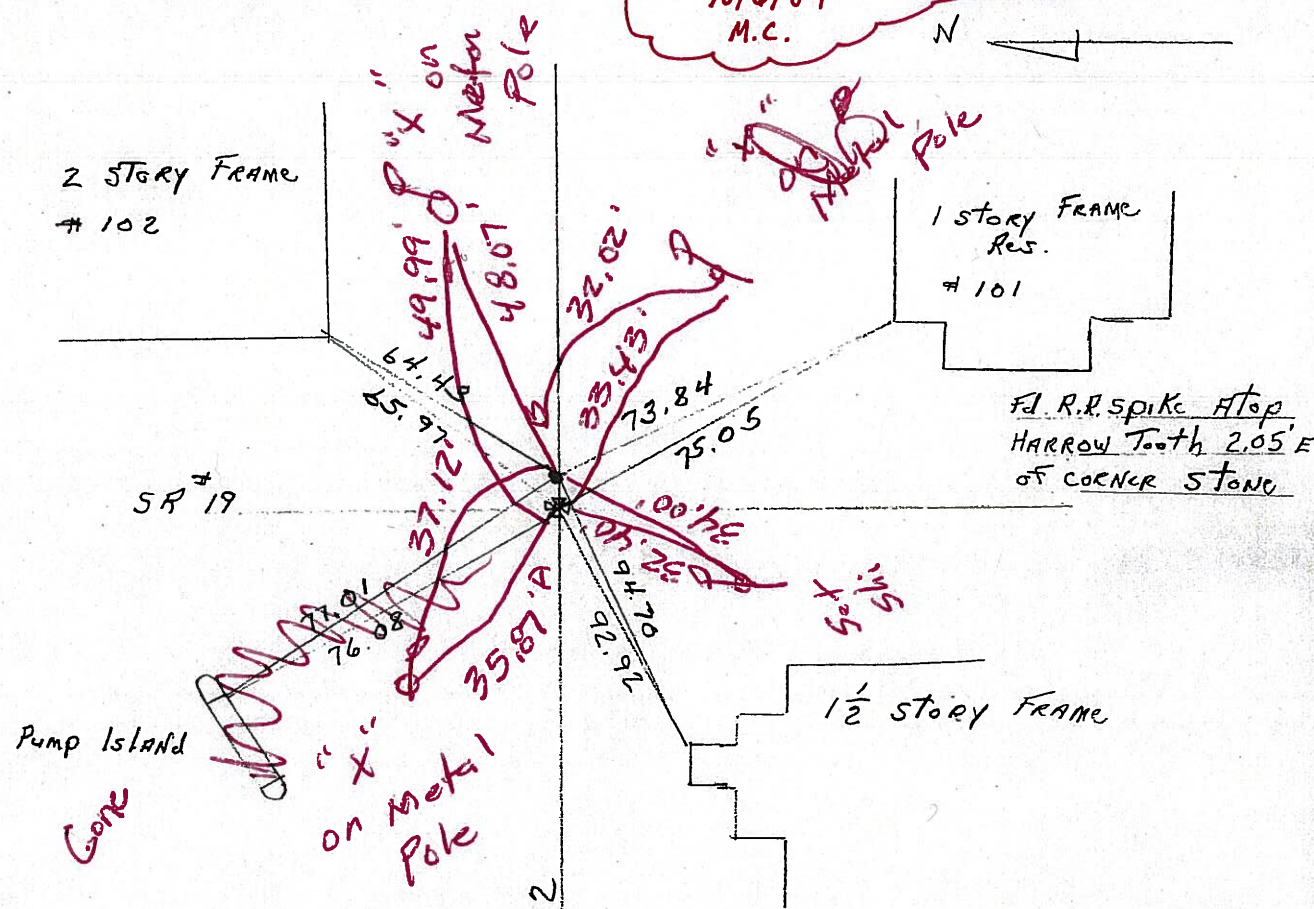
14	15
21	22



2-A

Dist A-B 2.05'

RESET NUT/WASHERS @ BOTH  
10/6/04  
M.C.



Fd Lg RR Spikes  
at Both points  
4 1/4" Down

O.D.O.T. DISTRICT 2 SURVEY OFFICE

PERSONNEL

REFERENCE NO. 2

SHEET 2 OF 30

NOTES Ripple

H.C. BARBOUR

R.C. GEYMAN

DATE 7-18-90

WEATHER \_\_\_\_\_

TEMP. \_\_\_\_\_

ROUTE 162

COUNTY Sen.

TOWNSHIP Scipio

SECTION 15-16-21-22

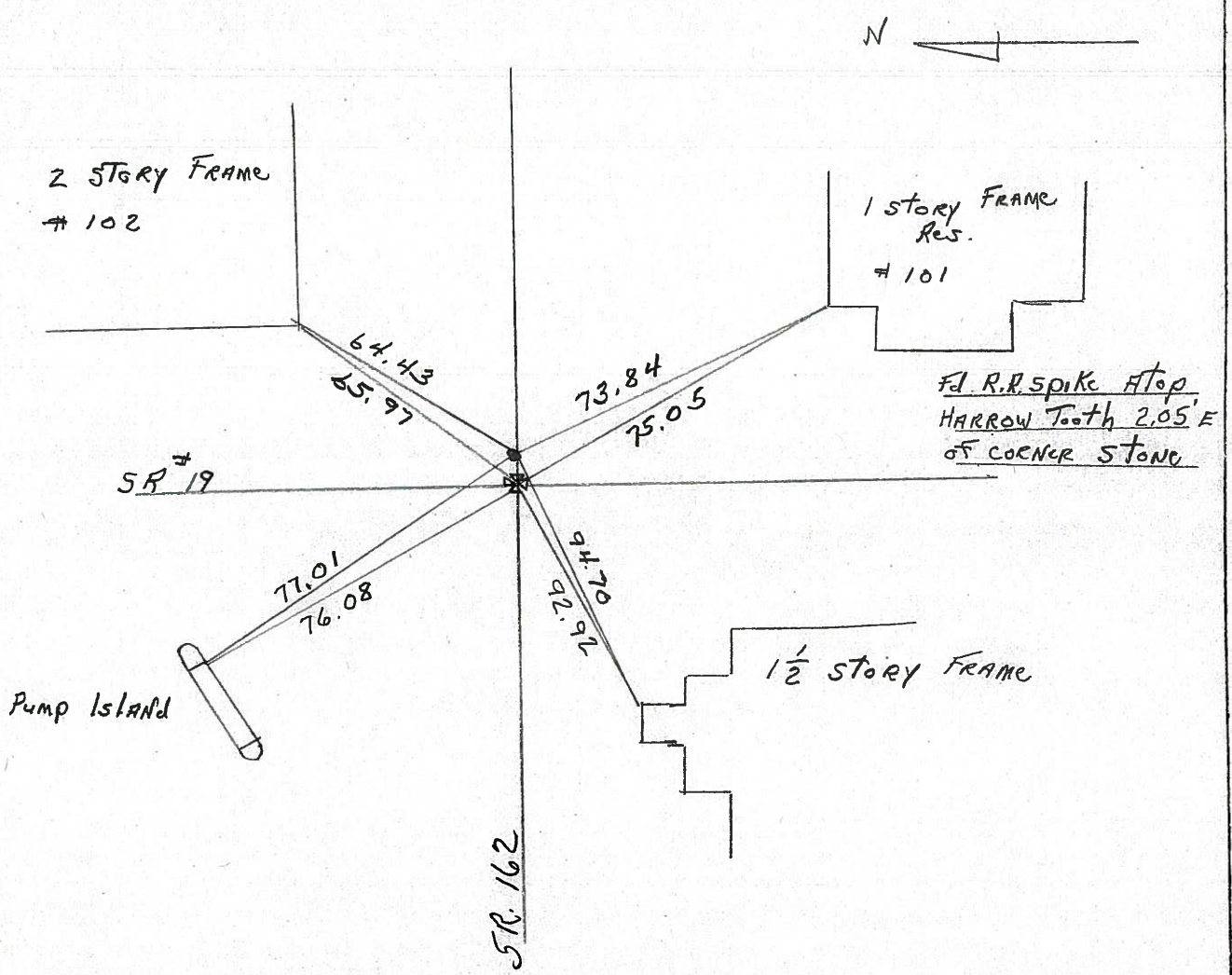
T 2 N R 16 E

TYPE MONUMENT P.K. + Washer  
ON SURFACE - BELOW CORNER STONE 9" down  
LEFT - @ PAV'T. - RIGHT 2' W OF 1/2 PAVMT  
TO \_\_\_\_\_ EDGE PAVEMENT  
S.L.M. \_\_\_\_\_

14	15
21	22



**2-A**



County Seneca S.R. # 162

Township Scipio

Section 15, 16, 21, 22

T2N, R16E

Personnel Crosby

Ripple

Geyman

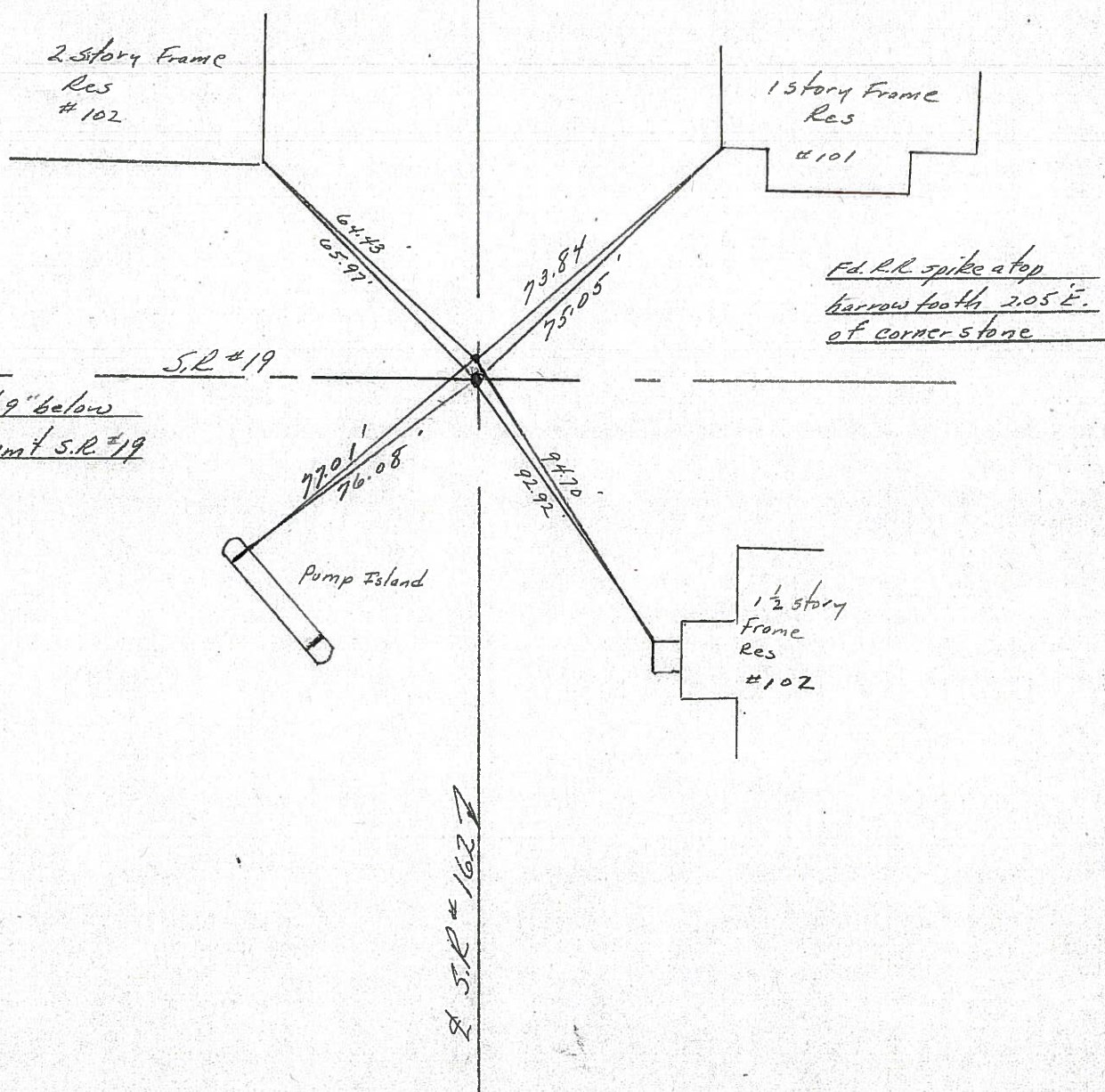
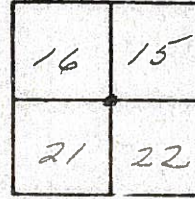
Borbour

#2-A

Date 1/09/84

Weather overcast

Temp. 25°



P.I.

Ed. P.R. & washer atop corner stone (9" below surface) 2' W & Point S.R. #19

County Seneca S.R. # 162

Date 6-11-79

Township Scipio

Weather Fair

Section 16, 15 & 21, 22

Temp. 65°

T\_N, R\_E

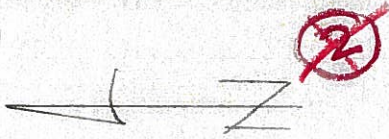
Personnel Schneider

Mosser

Barbour

16	15
21	22

2-A



⊥ S.R. # 162

Frame Res. # 102

Frame Res.

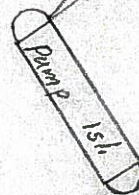
Fd. Harrow thooth  
2.05' E. of stone R.R. spk. on top

Fdt'n @ siding

Fdt'n @ Siding

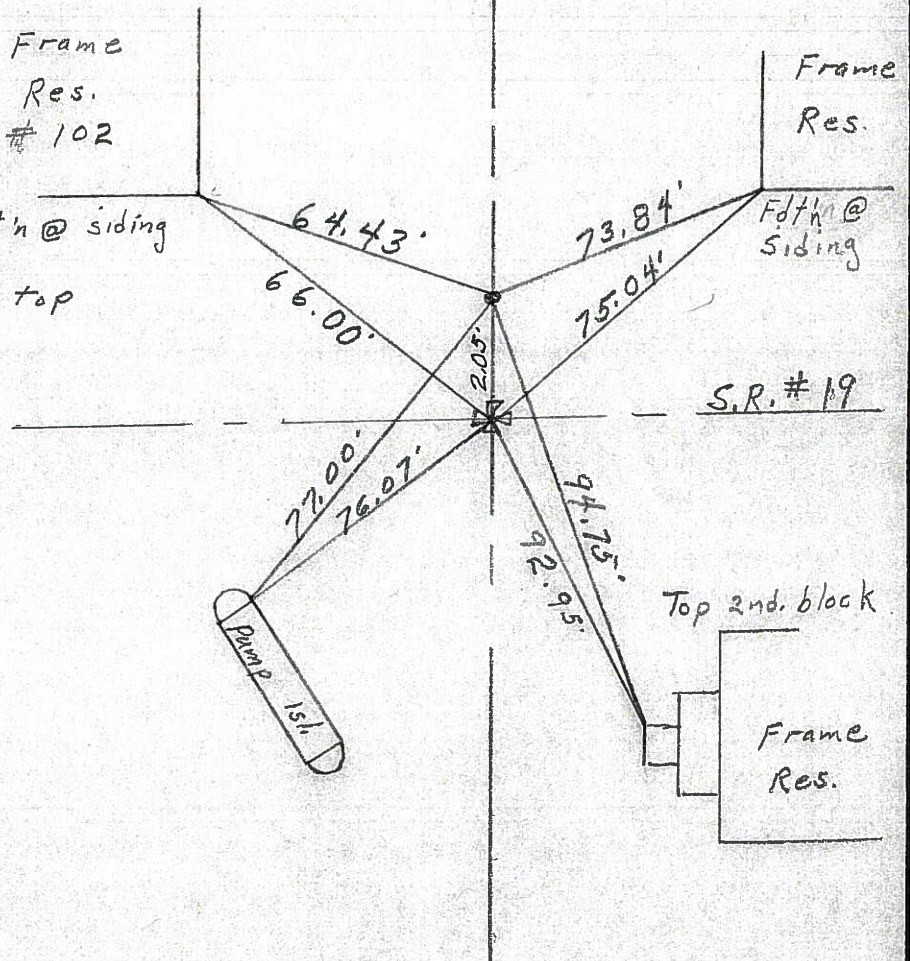
P.I.  
Fd. stone 9" down  
P.K. Nail on top

S.R. # 19



Top 2nd. block

Frame Res.



S. H. 449 Searles County

Sec. M.

Reference Points

①

160 + 88.7 Set R.R. Spike on E

Fd 4-20-04

②

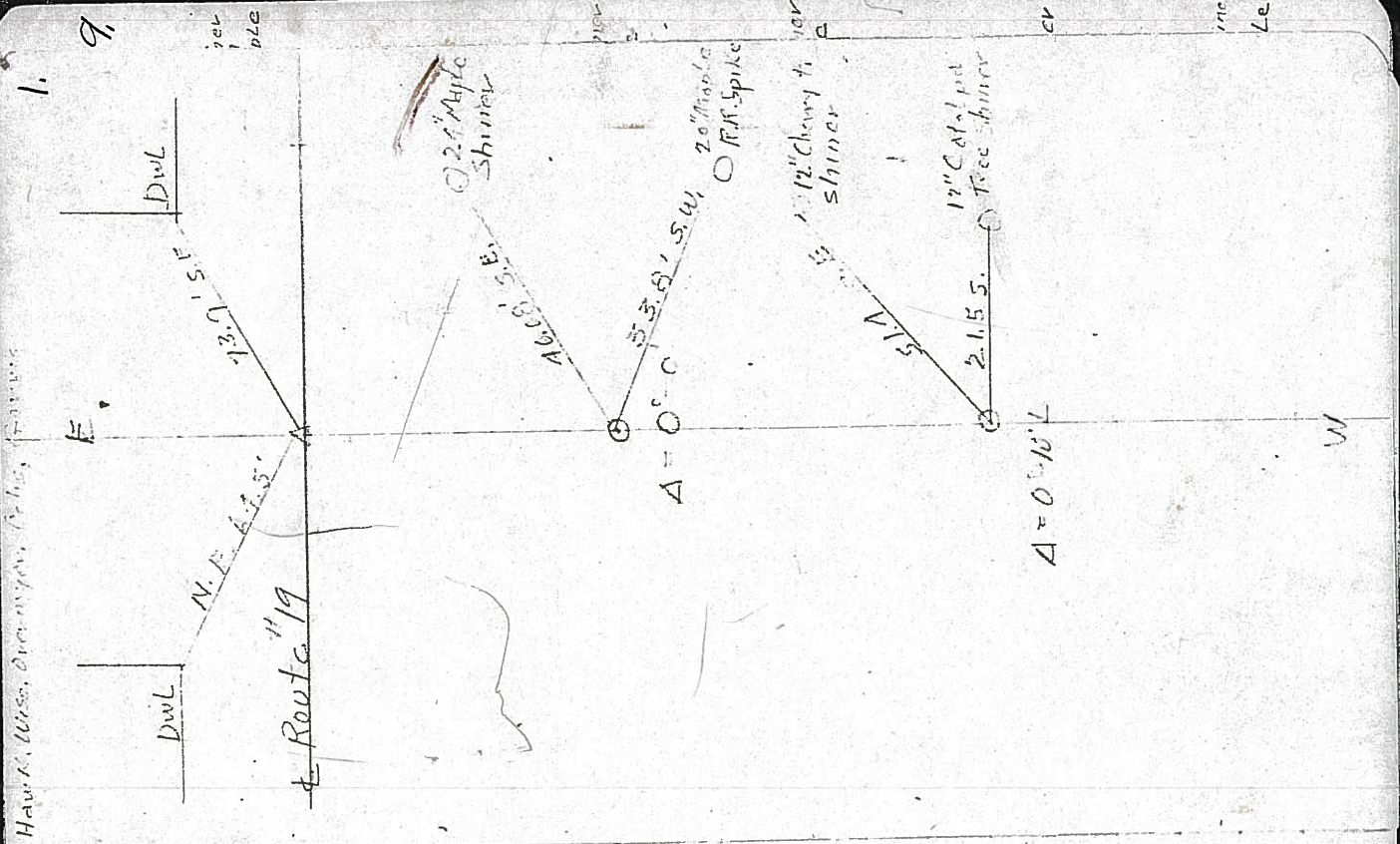
176 + 22.5 Shiner on E

Fd 4-14-04

③

187 + 61.6 Set Nail on top of on E

Fd 4-13-04



Handwritten notes: 'Have a. Miss. Over my eye. (to be) ...'

9.

DwL

13.0 U.S. 1.5

N. E. 44.5

Route 19

2 1/2" Maple Shiner

16.0 U.S. 1.5

A = 0° - 0'

2 1/2" Maple R.R. Spike

1 1/2" Cherry to Shiner

S 1/4

2.1.5 S. 1 1/2" Cal. 1/2" Free Shiner

A = 0° - 10' L

W