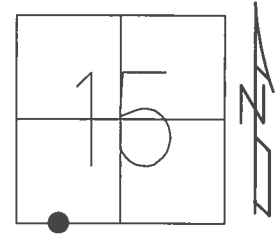


O.D.O.T. DISTRICT 2 SURVEY OFFICE (USE ONLY)

PERSONNEL _____ REFERENCE NO. 3 SHEET 4 OF 32

NOTES RHOADES _____ DATE 8/1/17 ROUTE SR 162
 H.C. HOMAN _____ WEATHER SUNNY COUNTY SENECA
 R.C. CARSON _____ TEMP. 70° TOWNSHIP SCIPIO
 _____ SECTION 15
 _____ T 2 N R 16 E

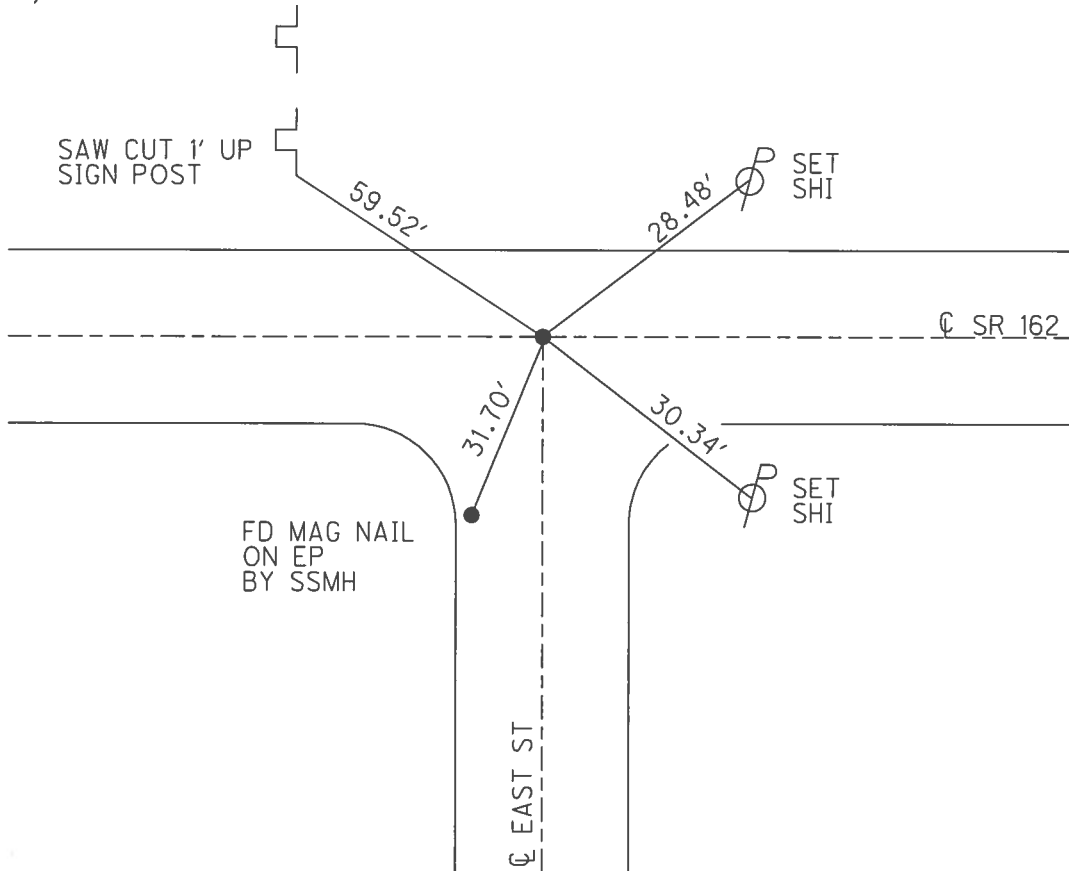
TYPE MONUMENT MAG/WASHER
 ON SURFACE - ~~BELOW~~ ON _____
~~LEFT~~ - ~~CL~~ PAV'T - RIGHT 1'
 - TO - EDGE PAVEMENT
 S.L.M. 8+12



GRID: NORTHING: 531608.208 EASTING: 1826913.735

RECORD:
 SET MAG/WASHER
 10-06-04, DCH
 FD MAG/WASHER
 REF3
 1/8/16, JFO
 SET 1" MAG/WASHER
 8/1/17, DCH

NOTE: PLASTIC CAP FOUND
 NO REG # ON CAP ONLY
 "MAKEEVER & ASSOC."
 THIS POINT WAS NOT SET
 BY ODOT.

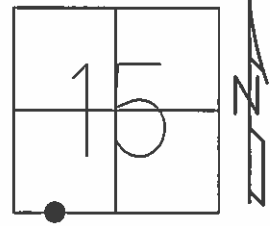


O.D.O.T. DISTRICT 2 SURVEY OFFICE (USE ONLY)

PERSONNEL _____ REFERENCE NO. 3 SHEET 4 OF 32

NOTES HOMAN _____ DATE 4/14/04 ROUTE SR 162
 H.C. HOMAN _____ WEATHER SUNNY COUNTY SENECA
 R.C. ARMS _____ TEMP. 40° TOWNSHIP SCIPIO
 _____ SECTION 15
 _____ T 2 N R 16 E

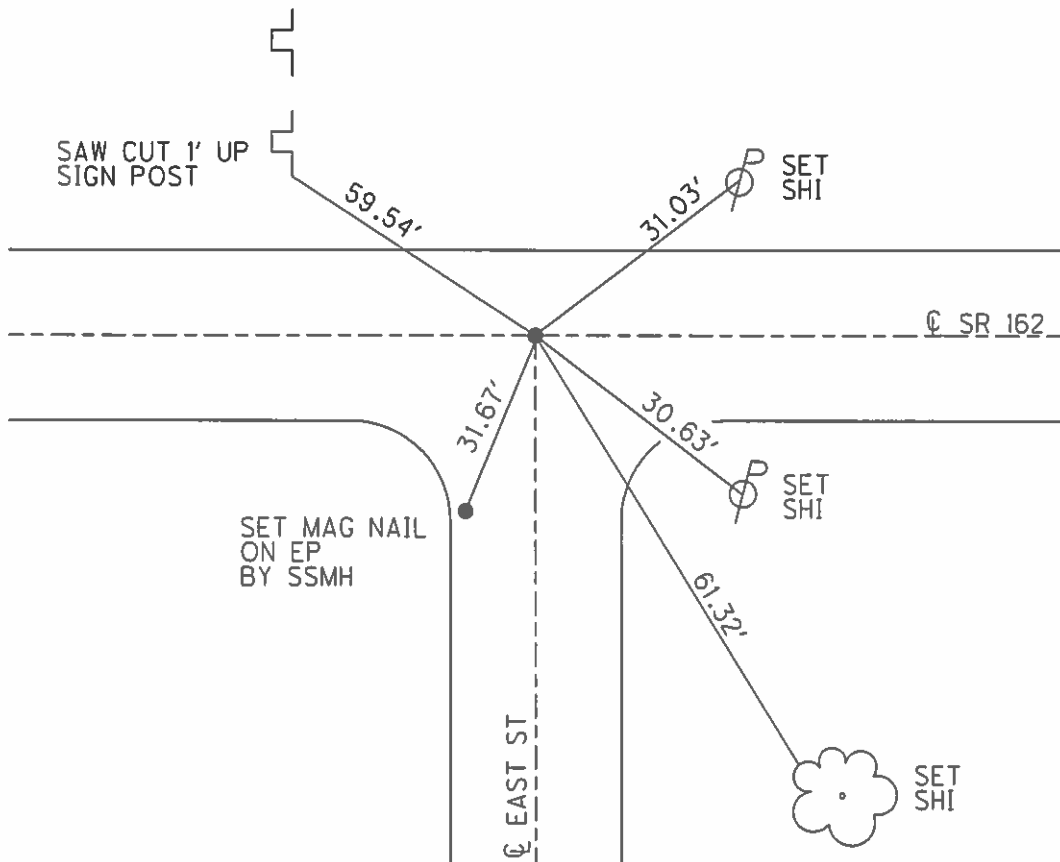
TYPE MONUMENT IPIN W/CAP
 ON SURFACE ~~BELOW~~ ON _____
~~LEFT~~ - ~~C PAVT~~ - RIGHT 1'
 - TO - EDGE PAVEMENT
 S.L.M. 8+12



GRID: NORTHING: _____ EASTING: _____

RECORD:
 SET MAG/WASHER
 10-06-04, DCH

NOTE: PLASTIC CAP FOUND
 NO REG # ON CAP ONLY
 "MAKEEVER & ASSOC."
 THIS POINT WAS NOT SET
 BY ODOT.



O.D.O.T. DISTRICT 2 SURVEY OFFICE

PERSONNEL

REFERENCE NO. 3

SHEET 3 OF 30

NOTES HOMAN

DATE 4-14-04

ROUTE SR 162

H.C. HOMAN

WEATHER SUNNY

COUNTY SENECA

R.C. ARMS

TEMP. 40°

TOWNSHIP SCIPPIO

SECTION 15

T 2 N R 16 E

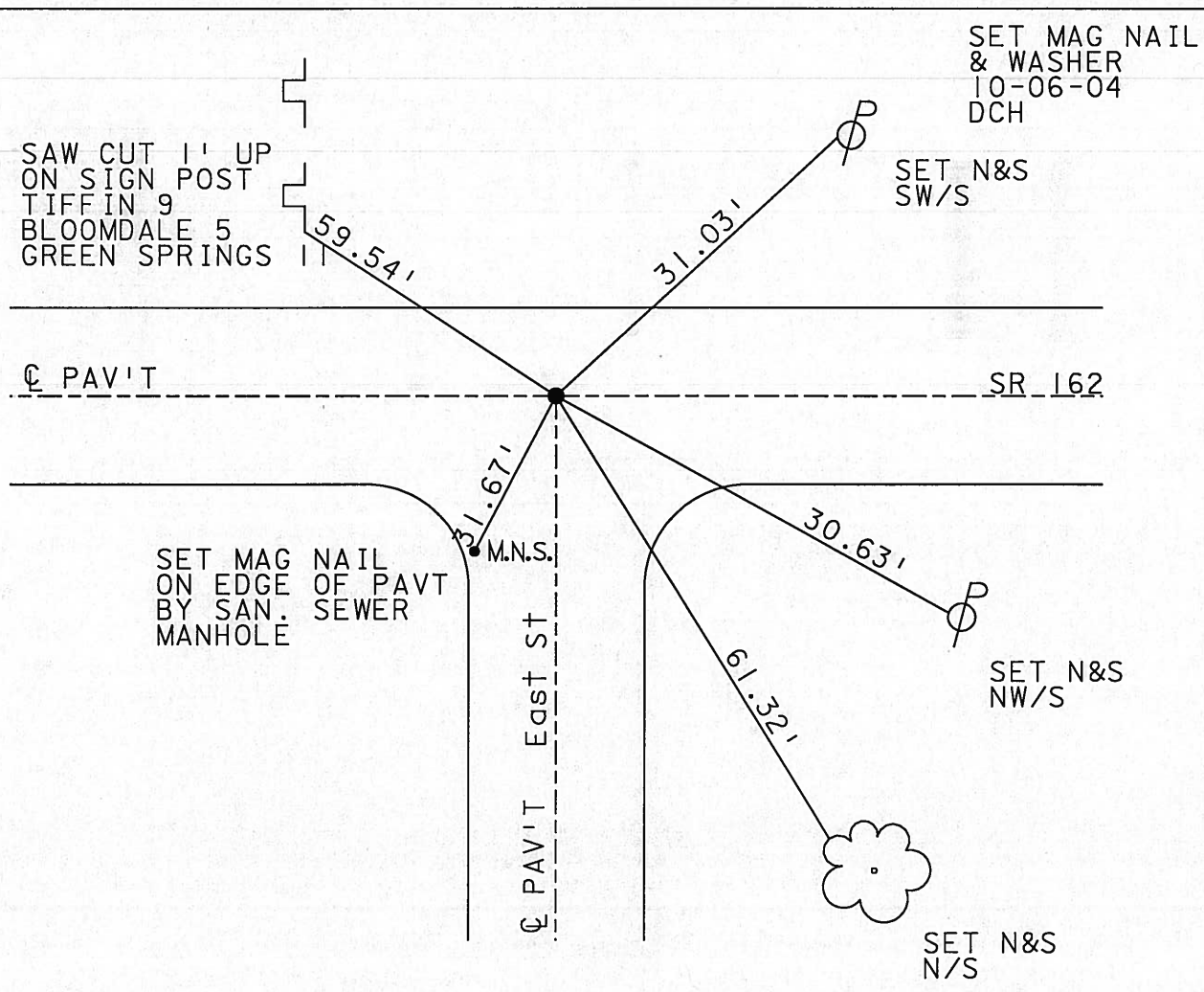
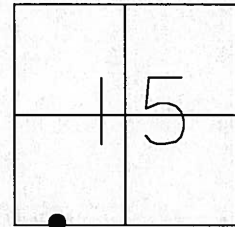
TYPE MONUMENT IRON PIN WITH PLASTIC CAP

ON SURFACE ~~BELOW~~ ON

~~LEFT - C PAVT - RIGHT~~ 1'

TO EDGE PAVEMENT

S.L.M. 8+12

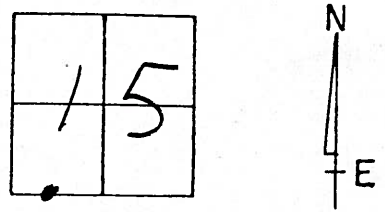


NOTE: PLASTIC CAP FOUND
 NO REG # ON CAP ONLY
 "MAKEEVER & ASSOC."
 THIS POINT WAS NOT SET
 BY ODOT.

O.D.O.T. DISTRICT 2 SURVEY OFFICE

PERSONNEL _____ REFERENCE NO. 3 SHEET 1 OF 1
 NOTES CORDES *Homan* DATE 7-28-97 *4-14-04* sunny
 H.C. LOEHKE *Homan* WEATHER HOT/OVERCAST ROUTE 162
 R.C. COX *Arms* TEMP. +90°F *40°* COUNTY SENECA
 TOWNSHIP SCIPPO
 SECTION 15
 T Z N R 16 E

TYPE MONUMENT PLASTIC CAP ✓
 ON SURFACE - YES ✓
 LEFT - 1' ✓ 1' EAST OF EAST ST. E ✓
9.2 TO LT EDGE PAVEMENT
 S.L.M. 8+19 - 8+12



NOTE: PLASTIC CAP FOUND
 NO REG # ON CAP ONLY
 "MAKEOVER & ASSOC". THIS
 POINT WAS NOT SET BY
 ODOT.

*Reset
 Mag Nail & Washer
 10-06-04
 DCH*

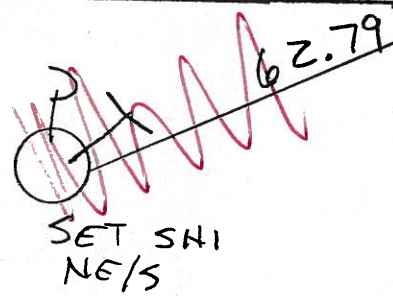
*Saw cut 1' ±
 up distance sign
 Tiffin 9*

Set N&S



Bloomdale S

PAVT SR 162
Green Springs II



*Set N&S
 Nail Edge
 PAVT
 By San
 Sewer Mh*

PAVT EAST ST.



O.D.O.T. DISTRICT 2 SURVEY OFFICE

PERSONNEL

REFERENCE NO. 3

SHEET 1 OF 1

NOTES CORDES

H.C. LOEHERE

R.C. COX

DATE 7-28-97

WEATHER HOT / OVERCAST

TEMP. +90°F

ROUTE 162

COUNTY SENECA

TOWNSHIP SCIPIO

SECTION 15

T.Z.N.R. 16E

TYPE MONUMENT PLASTIC CAP

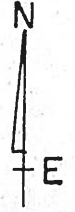
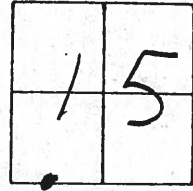
ON SURFACE - ~~NO~~ YES

LEFT - ~~PAV'T~~ - ~~RIGHT~~ 1'

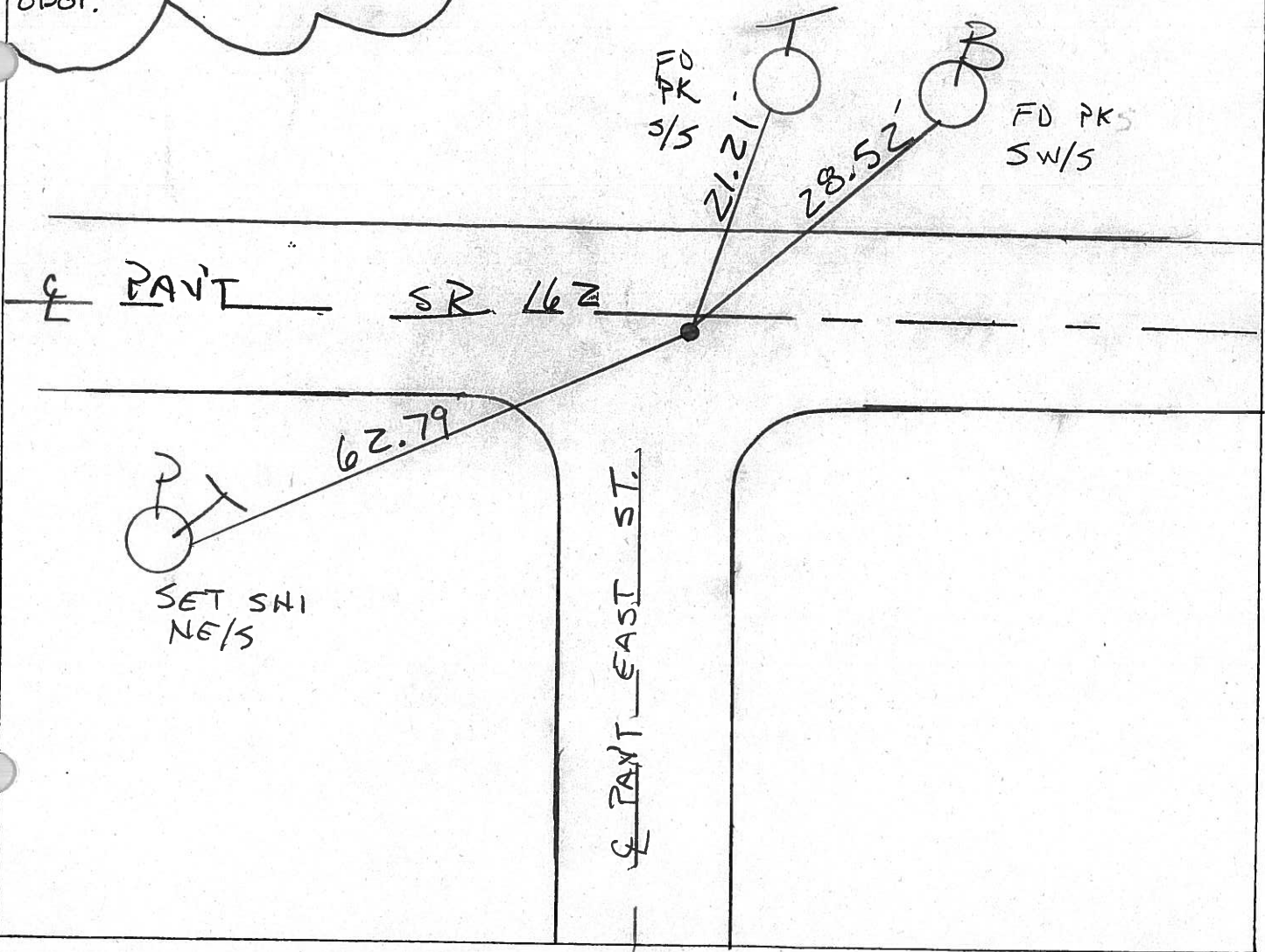
9.2 TO LT EDGE PAVEMENT

S.L.M. 8+19

1' EAST OF EAST ST. E



NOTE: PLASTIC CAP FOUND
NO REG # ON CAP ONLY
"MAKEEVER & ASSOC". THIS
POINT WAS NOT SET BY
ODOT.



O.D.O.T. DISTRICT 2 SURVEY OFFICE

PERSONNEL _____

REFERENCE NO. 3

SHEET 3 OF 30

NOTES Ripple

H.C. BARBOUR

R.C. GEYMAN

DATE 7-18-90

WEATHER Cloudy

TEMP. 50

ROUTE 162

COUNTY Sen.

TOWNSHIP Scipio

SECTION _____

T2 N R 16 E

TYPE MONUMENT Did Not Locate + Ties did not

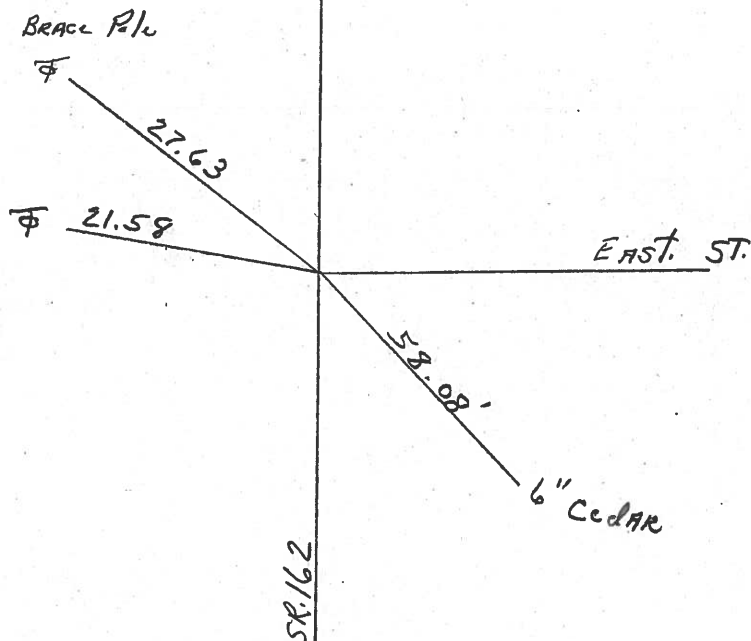
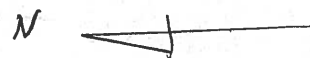
ON SURFACE - BELOW CROSS

LEFT - ☉ PAV'T. - RIGHT _____

TO EDGE PAVEMENT

S.L.M. _____

15	14
22	23



Did Not Find
used Metal locator

County Seneca SR-162

Date 6-11-79

Township sciprio

Weather Fair

Section 15

Temp. 65°

T₂N, R₁₆E

Personnel Schneider

Mosser

Barbour

15	14
x	
22	23

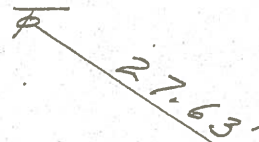


(3)



S.R. # 162

Brace Pole



East St.



6" cedar

N. & S.

did not find