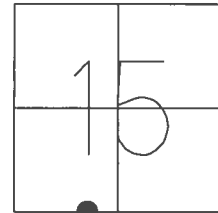


O.D.O.T. DISTRICT 2 SURVEY OFFICE (USE ONLY)

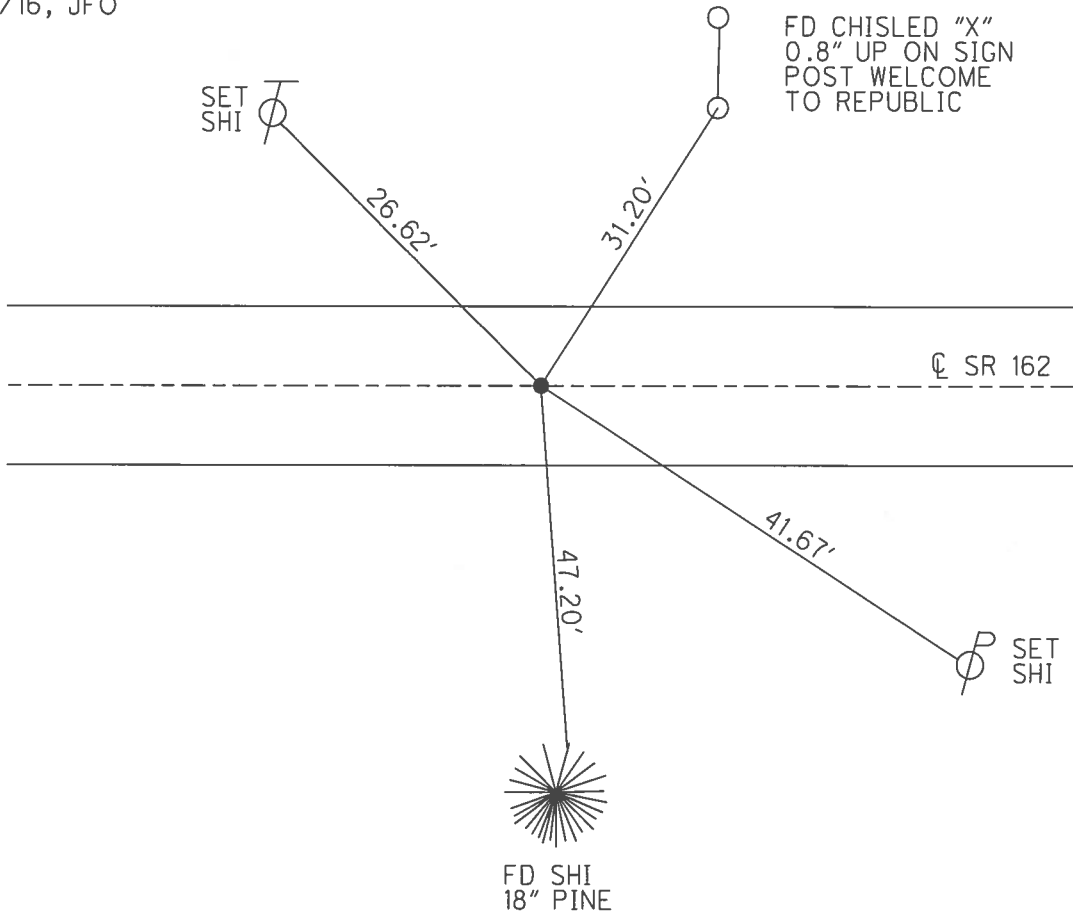
PERSONNEL \_\_\_\_\_ REFERENCE NO. 4 SHEET 5 OF 32  
 NOTES RHOADES \_\_\_\_\_ DATE 8/1/17 ROUTE SR 162  
 H.C. HOMAN \_\_\_\_\_ WEATHER SUNNY COUNTY SENECA  
 R.C. CARSON \_\_\_\_\_ TEMP. 70° TOWNSHIP SCIPIO  
 POORE \_\_\_\_\_ SECTION 15  
 T 2 N R 16 E

TYPE MONUMENT \_\_\_\_\_ MAG/WASHER \_\_\_\_\_  
~~ON SURFACE~~ - BELOW 3"  
~~LEFT~~ - ☉ PAV'T - RIGHT 0.7'  
 - TO - EDGE PAVEMENT  
 S.L.M. 19+10



GRID: NORTHING: 531606.133 EASTING: 1828007.757

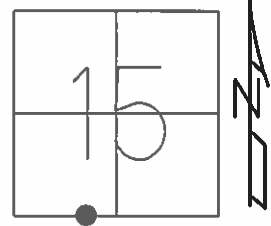
RECORD:  
 SET MAG/WASHER  
 10-06-04, DCH  
 FD MAG/WASHER  
 REF4  
 1/8/16, JFO



O.D.O.T. DISTRICT 2 SURVEY OFFICE (USE ONLY)

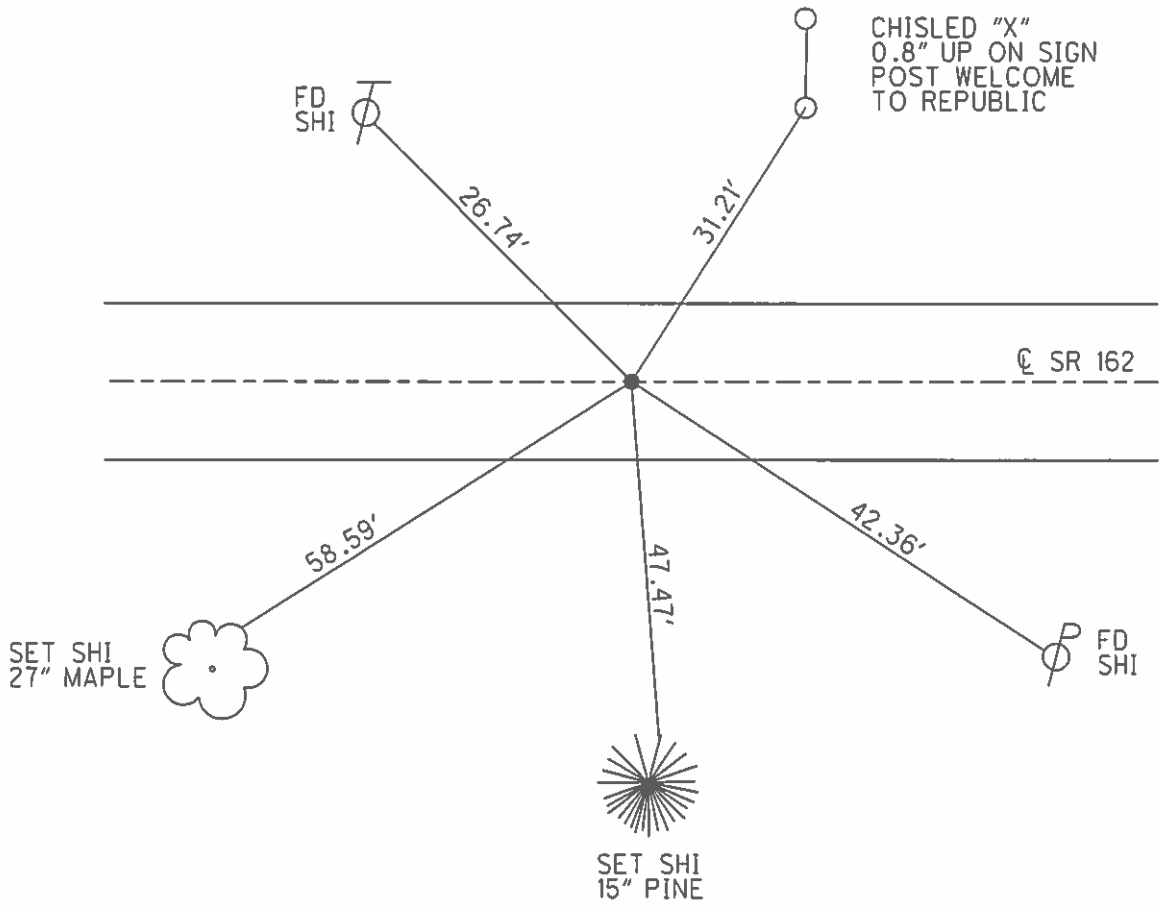
PERSONNEL \_\_\_\_\_ REFERENCE NO. 4 SHEET 5 OF 32  
 NOTES HOMAN \_\_\_\_\_ DATE 4/14/04 ROUTE SR 162  
 H.C. HOMAN \_\_\_\_\_ WEATHER SUNNY COUNTY SENECA  
 R.C. ARMS \_\_\_\_\_ TEMP. 56° TOWNSHIP SCIPIO  
 \_\_\_\_\_ SECTION 15  
 \_\_\_\_\_ T 2 N R 16 E

TYPE MONUMENT \_\_\_\_\_ BOAT SPIKE \_\_\_\_\_  
~~ON SURFACE~~ - BELOW 3"  
~~LEFT~~ - ℄ PAV'T - RIGHT 0.7'  
 \_\_\_\_\_ TO \_\_\_\_\_ EDGE PAVEMENT  
 S.L.M. 19+10



GRID: NORTHING: \_\_\_\_\_ EASTING: \_\_\_\_\_

RECORD:  
 SET MAG/WASHER  
 10-06-04, DCH



O.D.O.T. DISTRICT 2 SURVEY OFFICE

PERSONNEL \_\_\_\_\_

REFERENCE NO. 4

SHEET 4 OF 30

NOTES HOMAN

DATE 4-14-04

ROUTE SR 162

H.C. HOMAN

WEATHER SUNNY

COUNTY SENECA

R.C. ARMS

TEMP. 56°

TOWNSHIP SCIPPIO

SECTION 15

T 2 N R 16 E

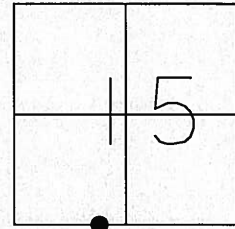
TYPE MONUMENT BOAT SPIKE

~~ON SURFACE~~ - BELOW 3"

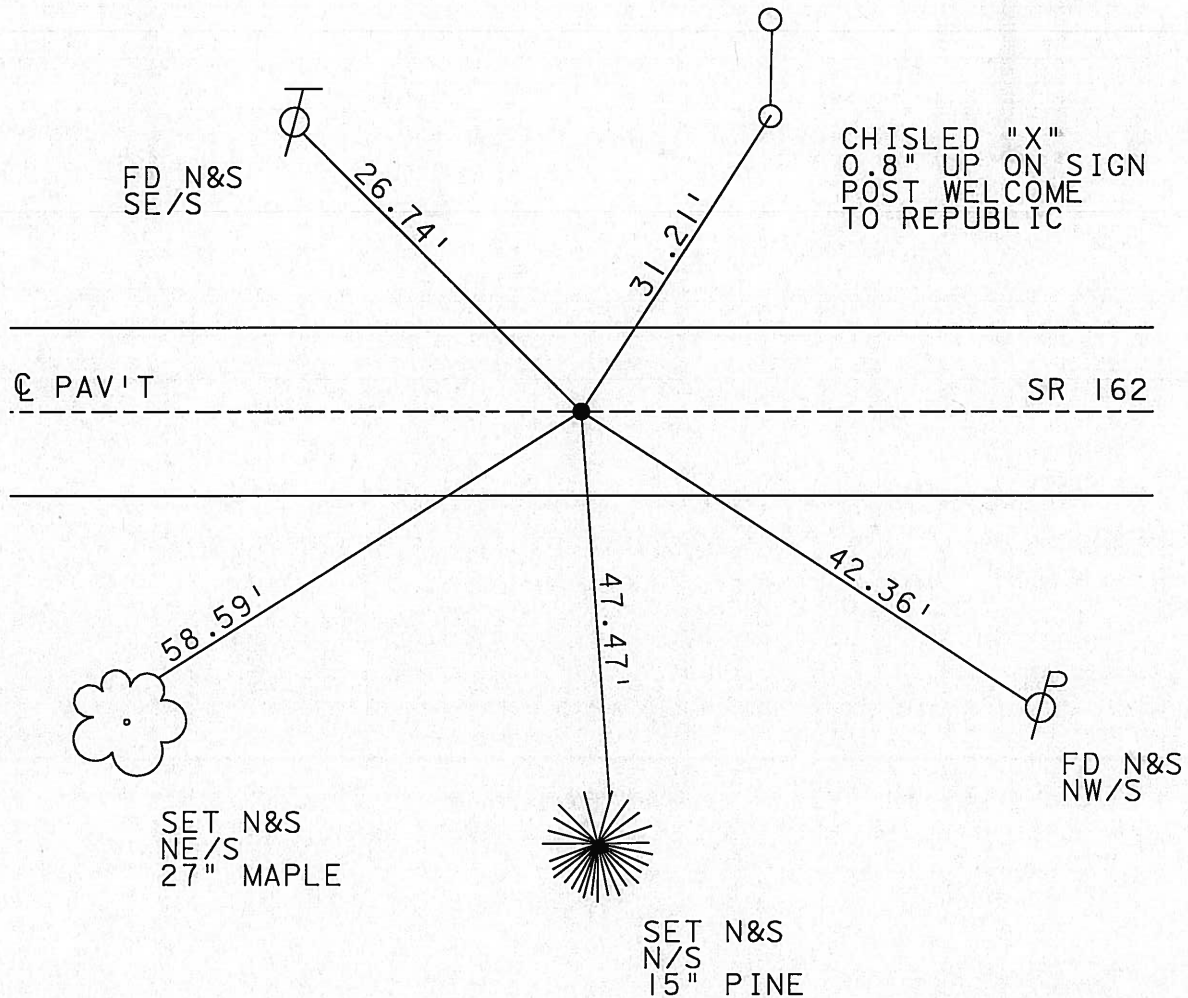
~~LEFT C PAV'T~~ - RIGHT 0.7' RT

TO EDGE PAVEMENT

S.L.M. 19+10



SET MAG NAIL  
& WASHER  
10-06-04  
DCH



# O.D.O.T. DISTRICT 2 SURVEY OFFICE

PERSONNEL

REFERENCE NO. 4

SHEET 4 OF 30

NOTES ~~By ppte~~ Human

H.C. ~~BNE bouk~~ Human

R.C. ~~Geyman~~ ARMS

DATE ~~10-23-90~~ 4-14-04

WEATHER ~~Cloudy~~ Sunny

TEMP. ~~50~~ 47.0

ROUTE 162

COUNTY Sen

TOWNSHIP Scipio

SECTION

T15 N R 16 E

Boat Spike

TYPE MONUMENT ~~R.K. + Washer~~

ON SURFACE - BELOW ~~Boat spike 2" down~~ 3"

LEFT - ~~C~~ PAV'T. - RIGHT ~~2~~ 0.7' Rt

TO EDGE PAVEMENT

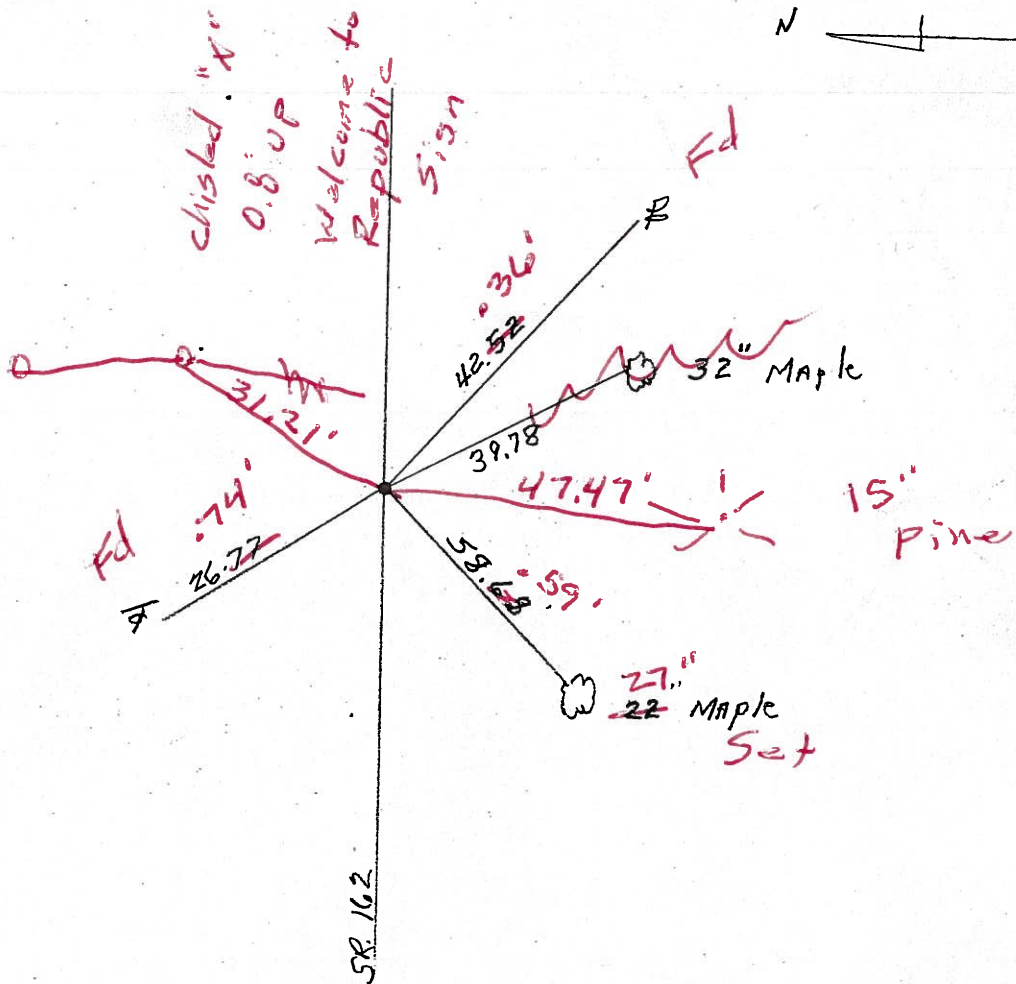
S.L.M. ~~176 + 22.75~~ 19 + 10

1	5
2	2



Reset Mag Nail & Washer

10-06-04  
DC



# O.D.O.T. DISTRICT 2 SURVEY OFFICE

PERSONNEL \_\_\_\_\_

REFERENCE NO. 4

SHEET 4 OF 30

NOTES Ripple

H.C. Bacbour

R.C. Geyman

DATE 10-23-90

WEATHER Cloudy

TEMP. 50

ROUTE 162

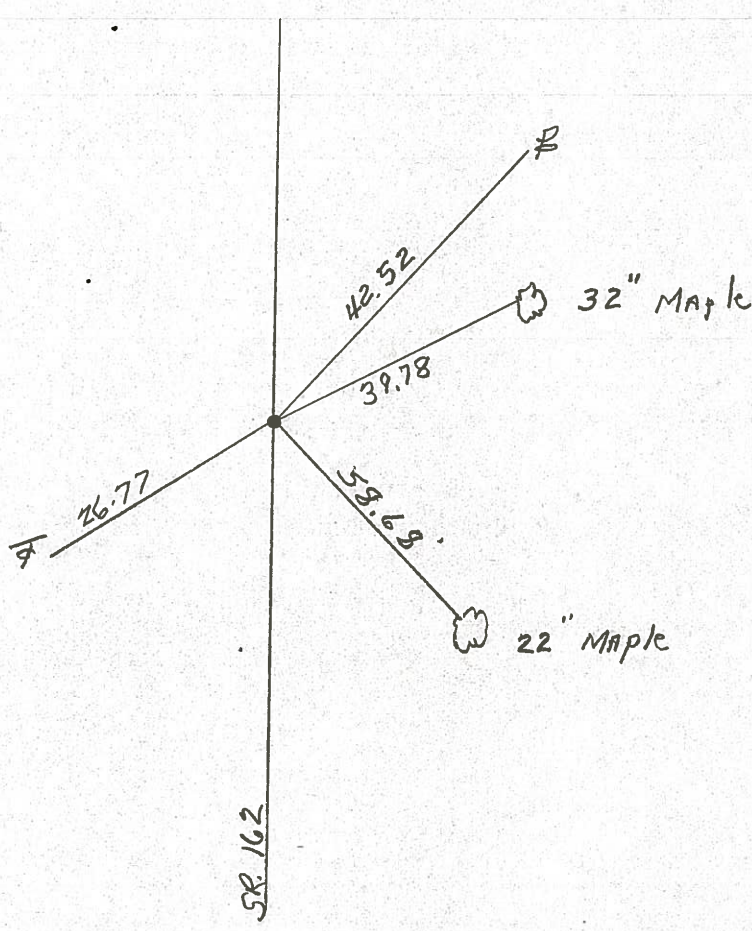
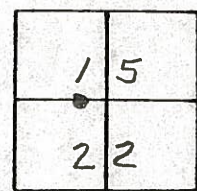
COUNTY Sen

TOWNSHIP Scipio

SECTION \_\_\_\_\_

T 15 N R 16 E

TYPE MONUMENT P.K. + Washer  
 ON SURFACE - BELOW Point spike 2" down  
 LEFT - ☉ PAV'T. - RIGHT ☉  
 \_\_\_\_\_ TO \_\_\_\_\_ EDGE PAVEMENT  
 S.L.M. 176 + 22.75



County Seneca S.R. #162

Date 1/3/84

Township Scipio

Weather overcast

Section 15 & 22

Temp. 30°

T2N, R16E

Personnel Cronin

1	5
2	2



#4

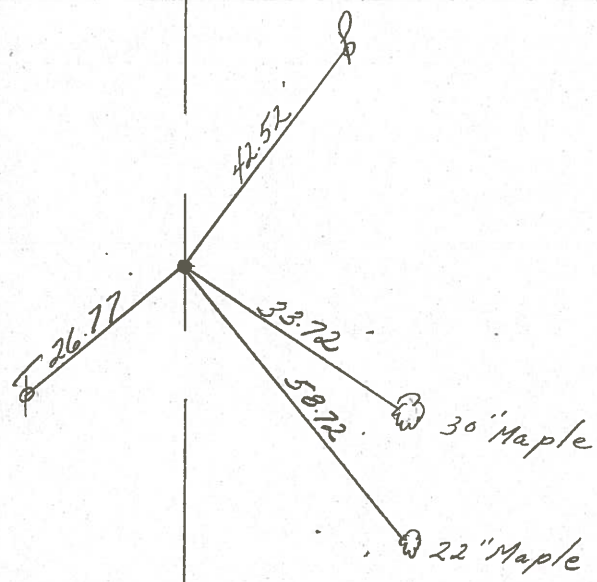
Ripple

Geyman

Barbour



P.O.T.  
176 + 22.75  
Fd. boat spike at top  
R.R. spike



S.R. #162

County Seneca SR-162

Date 6-11-79

Township Scipio

Weather Fair

Section 15

Temp. 65°

T2N, R6E

Personnel Schneider

Mosser

Barbour

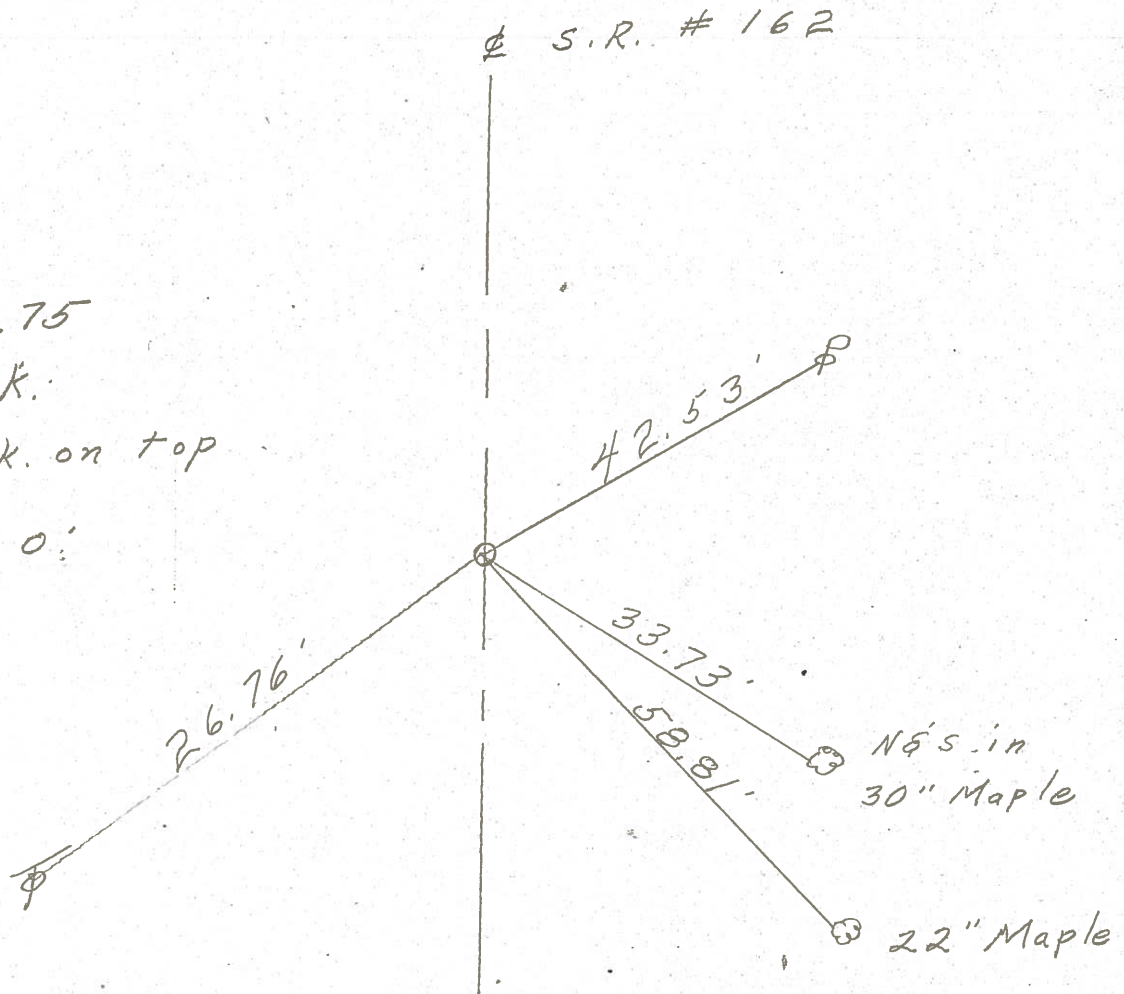
15	14
x	
22	23



4



P.O.T.  
 176+22.75  
 R.R. SPK.  
 Mine spk. on top  
 $\Delta = 0^{\circ} 0'$



S. H. 447 Searles County

Sec. M.

Reference Points

(2-A)

160 + 8.5.1 Set R.R. Spike on E

Fd 4-20-04

(4)

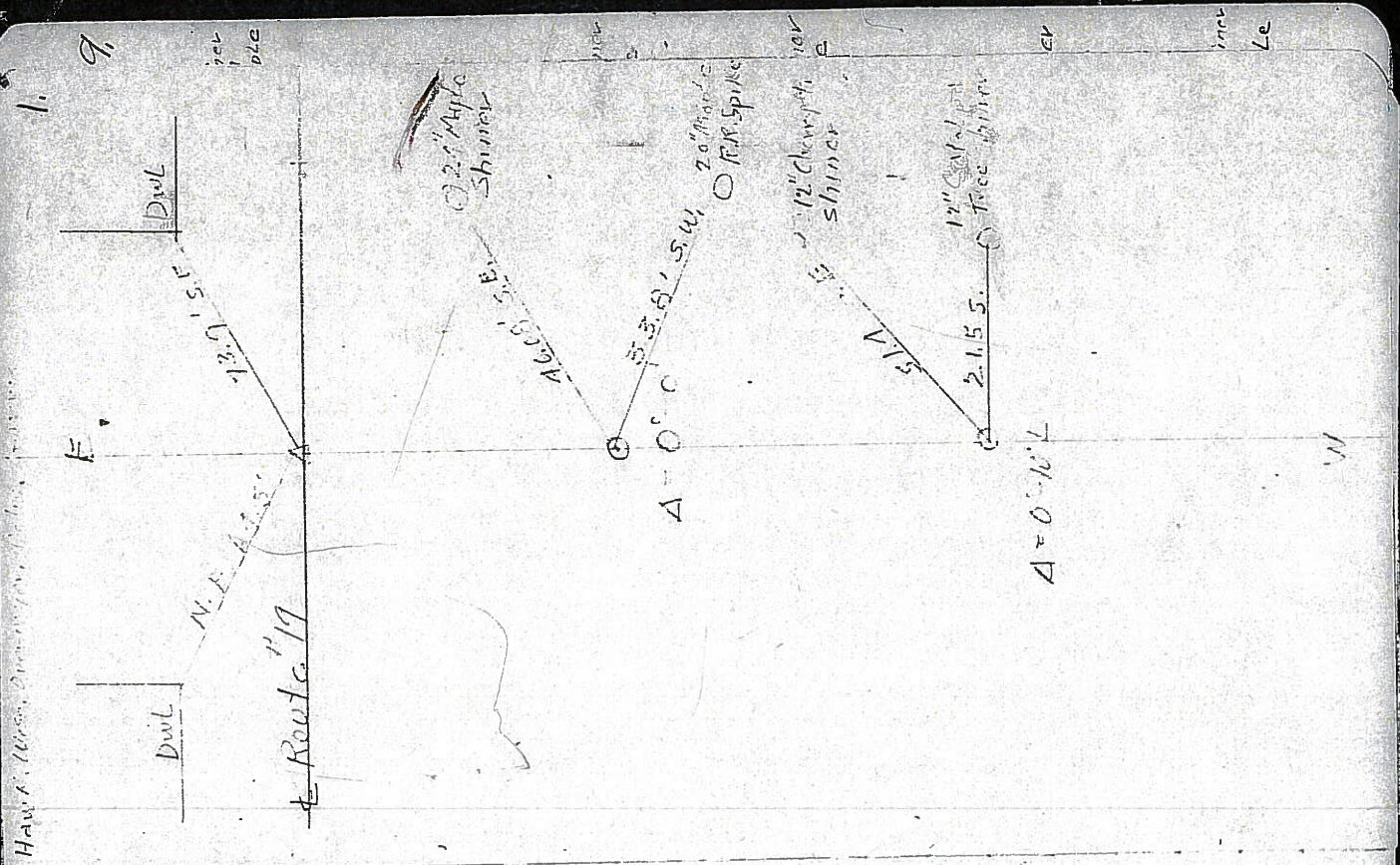
176 + 22.1.5 Shiner on E

Fd 4-14-04

(5)

187 + 6.1.6 Set Harrison Tin on E

Fd 4-13-04



Handwritten notes on the left margin of the map page.