

O.D.O.T. DISTRICT 2 SURVEY OFFICE (USE ONLY)

PERSONNEL _____ REFERENCE NO. 6 SHEET 7 OF 32

NOTES RHOADES DATE 8/1/17 ROUTE SR 162

H.C. HOMAN WEATHER SUNNY COUNTY SENECA

R.C. CARSON TEMP. 70° TOWNSHIP SCIPIO

POORE SECTION 15

T 2 N R 16 E

TYPE MONUMENT MAG/WASHER

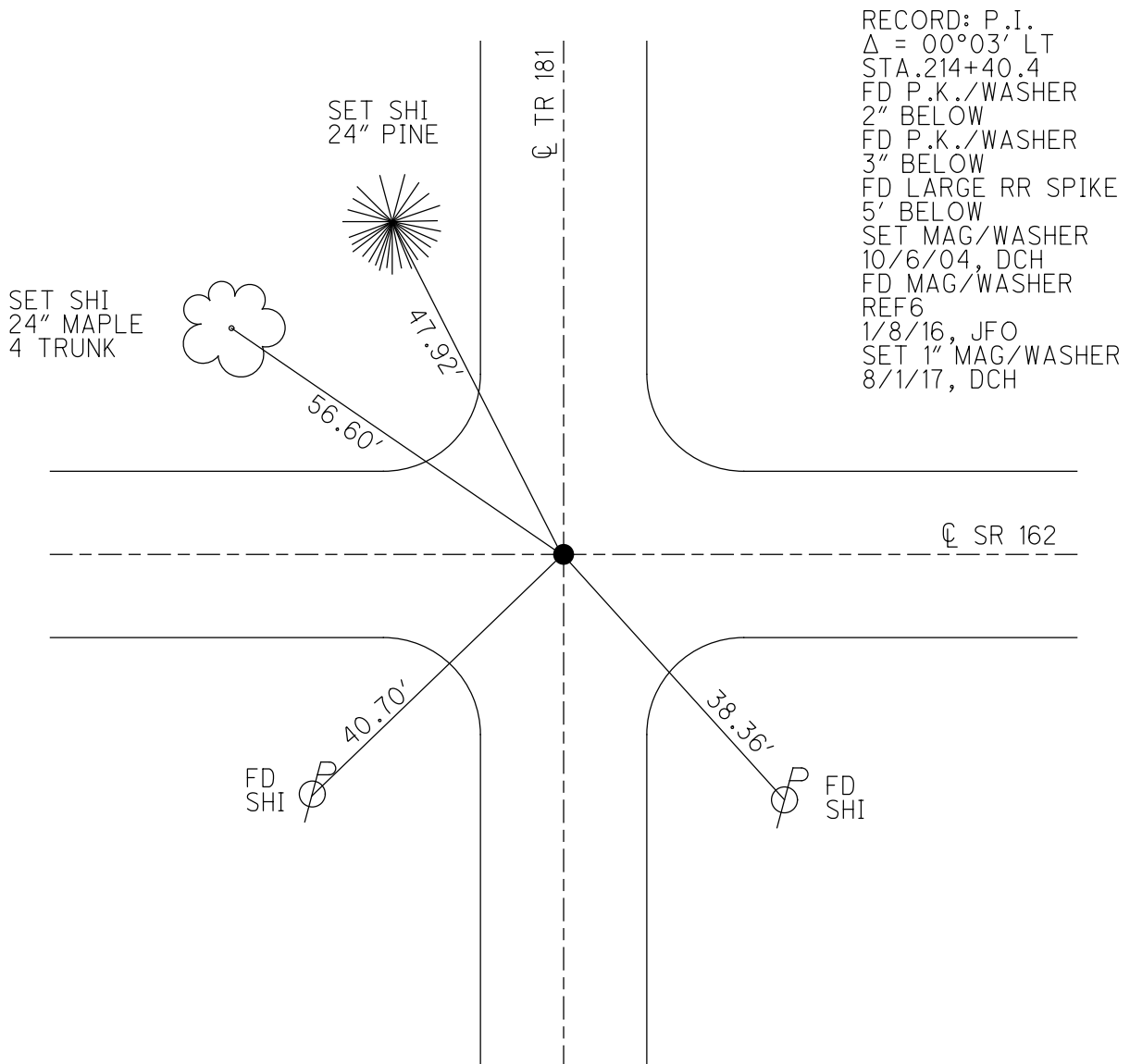
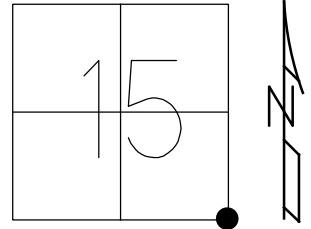
ON SURFACE - ~~BELOW~~ ON

~~LEFT~~ - CL PAV'T - RIGHT 0.5'

- TO - EDGE PAVEMENT

S.L.M. 57+30

GRID: NORTHING: 531610.143 EASTING: 1831825.529



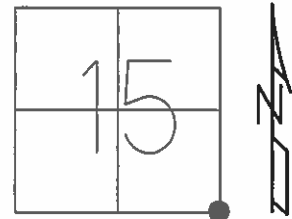
RECORD: P.I.
 $\Delta = 00^{\circ}03' LT$
 STA. 214+40.4
 FD P.K./WASHER
 2" BELOW
 FD P.K./WASHER
 3" BELOW
 FD LARGE RR SPIKE
 5' BELOW
 SET MAG/WASHER
 10/6/04, DCH
 FD MAG/WASHER
 REF 6
 1/8/16, JFO
 SET 1" MAG/WASHER
 8/1/17, DCH

O.D.O.T. DISTRICT 2 SURVEY OFFICE (USE ONLY)

PERSONNEL _____ REFERENCE NO. 6 SHEET 7 OF 32

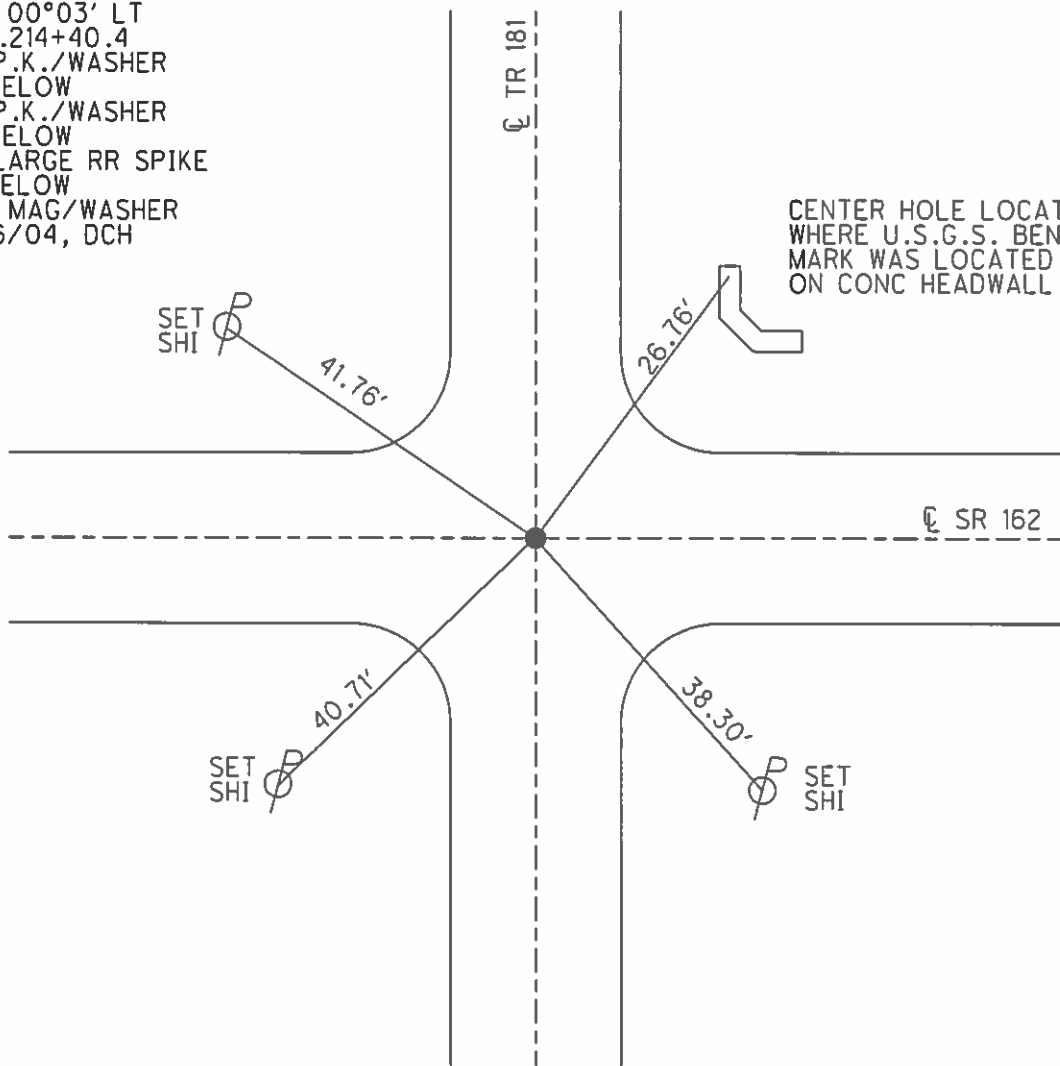
NOTES HOMAN _____ DATE 3/25/04 ROUTE SR 162
 H.C. HOMAN _____ WEATHER CLOUDY COUNTY SENECA
 R.C. ARMS _____ TEMP. 60° TOWNSHIP SCIPIO
 _____ SECTION 15
 _____ T 2 N R 16 E

TYPE MONUMENT P.K./WASHER
 ON SURFACE - ~~BELOW~~ ON
~~LEFT~~ - ☉ PAV'T - RIGHT 0.5'
TO - EDGE PAVEMENT
 S.L.M. 57+30



GRID: NORTHING: _____ EASTING: _____

RECORD: P.I.
 $\Delta = 00^{\circ}03' LT$
 STA. 214+40.4
 FD P.K./WASHER
 2" BELOW
 FD P.K./WASHER
 3" BELOW
 FD LARGE RR SPIKE
 5' BELOW
 SET MAG/WASHER
 10/6/04, DCH



O.D.O.T. DISTRICT 2 SURVEY OFFICE

PERSONNEL

REFERENCE NO. 6

SHEET 6 OF 30

NOTES HOMAN

DATE 3-25-04

ROUTE SR 162

H.C. HOMAN

WEATHER CLOUDY

COUNTY SENECA

R.C. ARMS

TEMP. 60°

TOWNSHIP SCIPPIO

SECTION 15

T 2 N R 16 E

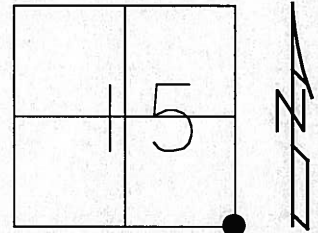
TYPE MONUMENT PK & WASHER

ON SURFACE ~~-BELOW~~ ON

~~LEFT - C PAV'T - RIGHT~~ 0.5' RT

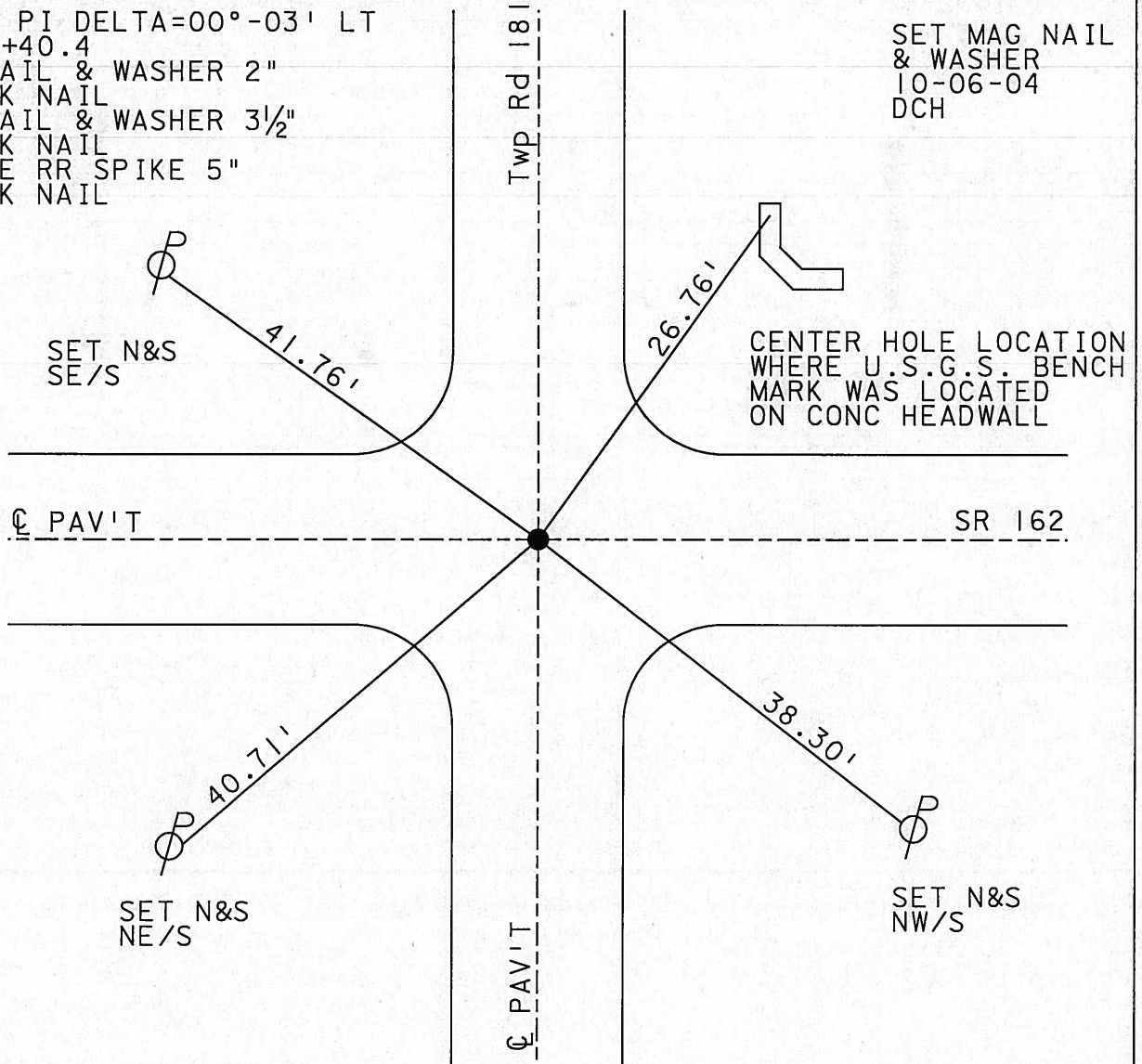
TO EDGE PAVEMENT

S.L.M. 57+30



1979 RECORD: PI DELTA=00°-03' LT
 2004 STA 214+40.4
 FD PK NAIL & WASHER 2"
 BELOW PK NAIL
 FD PK NAIL & WASHER 3 1/2"
 BELOW PK NAIL
 FD LARGE RR SPIKE 5"
 BELOW PK NAIL

SET MAG NAIL
 & WASHER
 10-06-04
 DCH



County Seneca SR-162

Date 6-11-79

Township Scipio

Weather Fair

Section 15, 14 & 22, 23

Temp. 65°

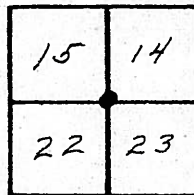
T2N, R16E

Personnel Schneider

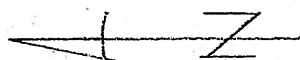
Mosser

Barbour

Sta. 57+30



⑥



0.5' Rt of E

3-25-04

Homan HC Notes

Arms RC

Cloudy

Windy

60°

Center U.S.G.S.



S.R. # 162

Set

38.30
~~34.72~~

~~26.72~~
26.76

Twp. # 181

Peck Rd.
Mud Rd. south

P. I.
214+40.4
R. R. spk.
Mine spk. on top
 $\Delta = 00 03' Lt.$

41.76

30.81
41.04

Brace Pole

- Fd PK Nail on Surface
- ~~2"~~ 2" Down Fd PK Nail & Washer
- 3 1/2" Down Fd PK Nail & Washer
- 5" Down Fd RR Spike

Reset Mag Nail & Washer.

10-06-04
DCH

O.D.O.T. DISTRICT 2 SURVEY OFFICE

PERSONNEL _____

REFERENCE NO. 6

SHEET 6 OF 30

NOTES Ripple

H.C. Barbours

R.C. GeyMAN

DATE 10-23-90

WEATHER Sunny Windy

TEMP. 50°

ROUTE 162

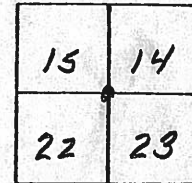
COUNTY Sen.

TOWNSHIP Scipio

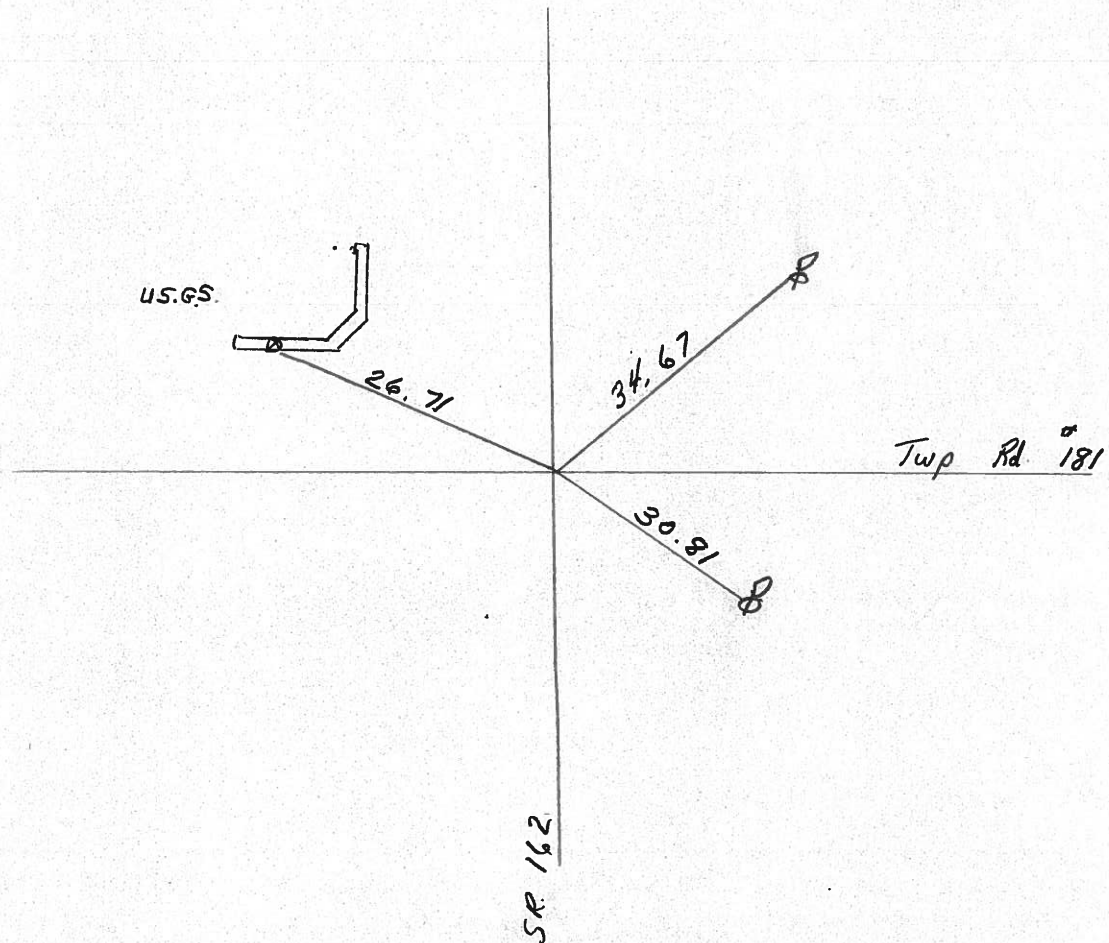
SECTION 14 15 22 23

T _____ R _____

TYPE MONUMENT Set P.K. + Washer
 ON SURFACE - BELOW 2" down boat spike atop RR spike
 LEFT - € PAV'T. - RIGHT _____
 _____ TO _____ EDGE PAVEMENT
 S.L.M. _____



PI Δ = 00° 03' LR



County Seneca S.R. #162

Date 1/3/84

Township Scipio

Weather overcast

Section 14, 15, 22, 23

Temp. 30°

T2N, R16E

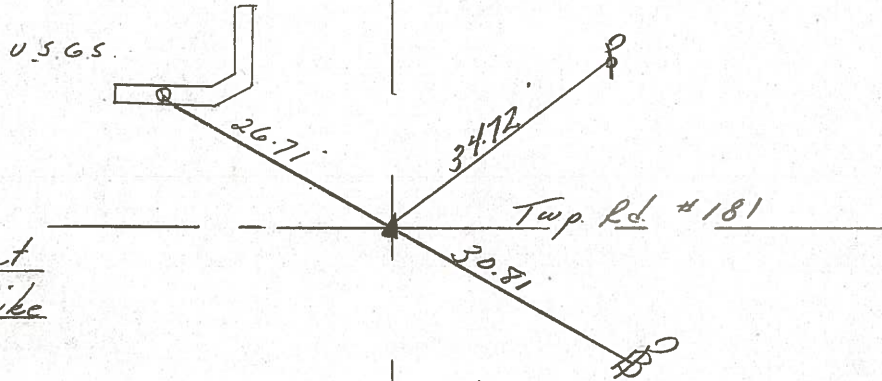
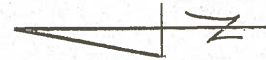
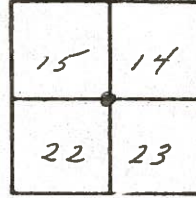
Personnel Cronin

#6

Ripple

Geyman

Barbour



P.I. $\Delta = 00^{\circ}03' Lt$

214 + 40.40

Set P.K. & washer atop boat
spike & washer atop R.R. spike

S.R. #162

County Seneca SR-162

Date 6-11-79

Township Sciprio

Weather Fair

Section 15, 14 & 22, 23

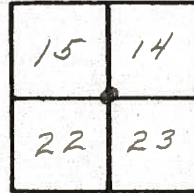
Temp. 65°

T2N, R16E

Personnel Schneider

Mosser

Barbour



(6)



center U.S.G.S.



S.R. # 162

26.70'

34.72'

Twp. # 181

Peck Rd.
Mud Rd. south

30.81'

Brace Pole

P. I.

214 + 40.4

R. R. spk.

Mine spk. on top

$\Delta = 00\ 03' \text{ Lt.}$

S. H. 479 Sec. M.

(6)

219+40.4 Set R.R. Spike

FD 3-25-04

(7)

233+54.05 R.R. Spike on E

FD 4-14-04

(8)

241+26.2 Set R.R. Spike on E

Need Help on Hill Limited

Sight Distance FD 4-20-04

(9)

268+09.75 R.R. Spike on E

FD 4-13-04

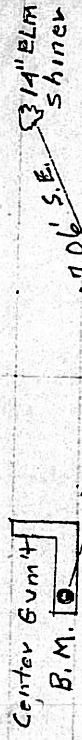
(10)

278+23.4 Set R.R. Spike on E

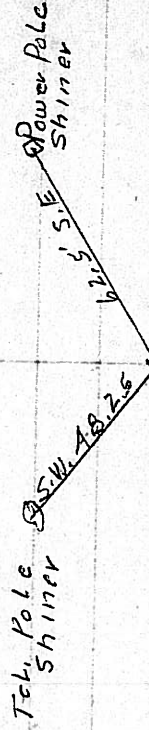
Need Help

2.

E



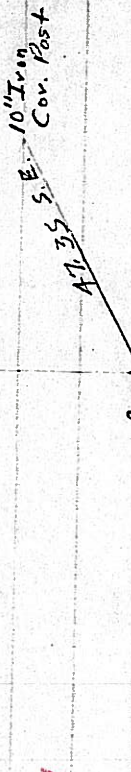
12" Elm Shiner
N.W. 61.67'
36.62 NE
A = 0°31' L



A = 0°0'



A = 0°36' R



A = 0°30' R



A < 0°-0'

W