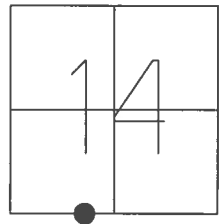


O.D.O.T. DISTRICT 2 SURVEY OFFICE (USE ONLY)

PERSONNEL _____ REFERENCE NO. 7 SHEET 8 OF 32

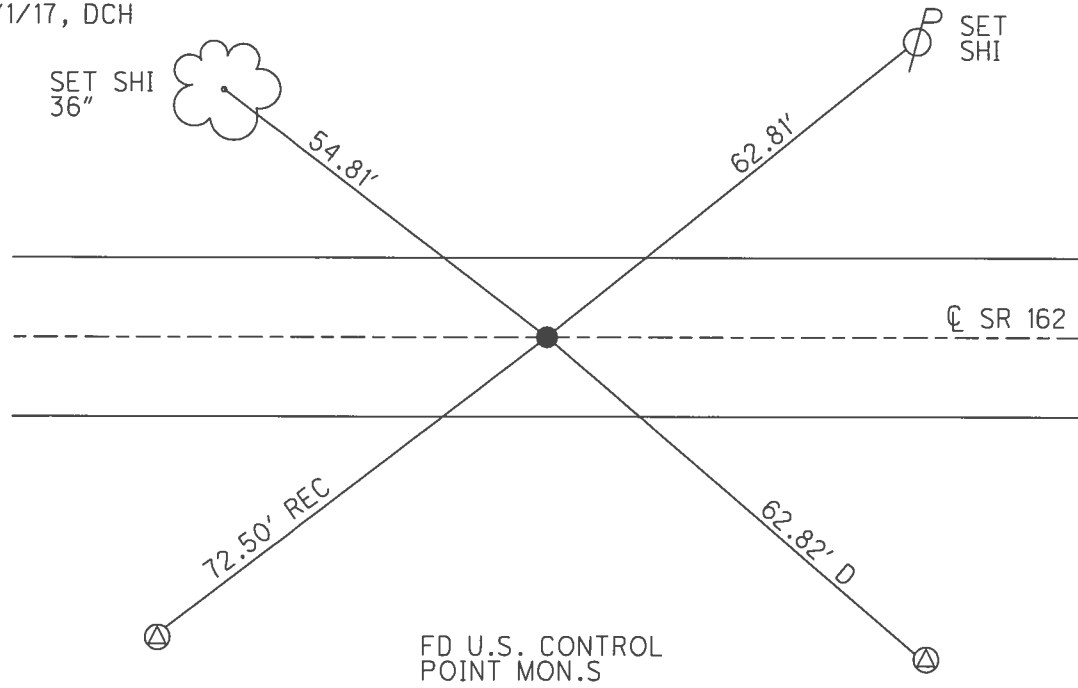
NOTES RHOADES _____ DATE 8/1/17 ROUTE SR 162
 H.C. HOMAN _____ WEATHER SUNNY COUNTY SENECA
 R.C. CARSON _____ TEMP. 70° TOWNSHIP SCIPIO
 POORE _____ SECTION 14
 T 2 N R 16 E

TYPE MONUMENT MAG/WASHER
 ON SURFACE - ~~BELOW~~ ON _____
 LEFT - ☉ PAV'T - ~~RIGHT~~ 1.5"
 - TO - EDGE PAVEMENT
 S.L.M. 76+30



GRID: NORTHING: 531616.123 EASTING: 1833739.573

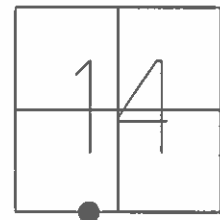
RECORD: P.O.T.
 STA. 233+54.05
 FD MINE SPIKE
 3" DOWN
 FD LG R.R.SPIKE
 6" DOWN
 SET MAG/WASHER
 10/6/04, DCH
 FD MAG/WASHER
 REF7
 1/8/16, JFO
 SET 1" MAG/WASHER
 8/1/17, DCH



O.D.O.T. DISTRICT 2 SURVEY OFFICE (USE ONLY)

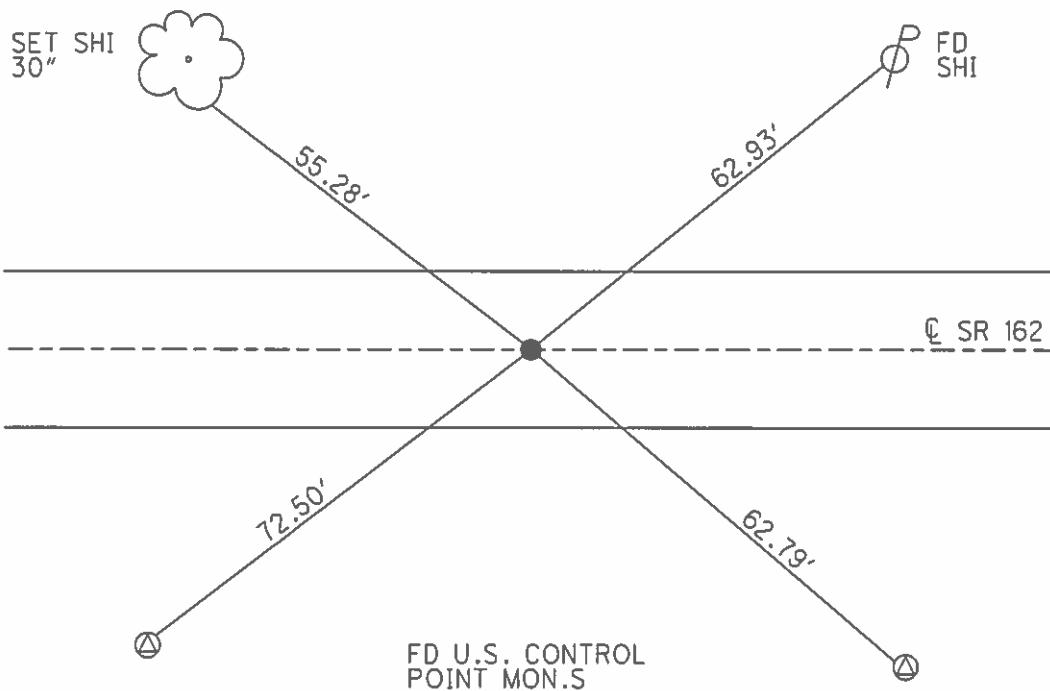
PERSONNEL _____ REFERENCE NO. 7 SHEET 8 OF 32
 NOTES HOMAN DATE 4/14/04 ROUTE SR 162
 H.C. HOMAN WEATHER SUNNY COUNTY SENECA
 R.C. ARMS TEMP. 56° TOWNSHIP SCIPIO
 SECTION 14
 T 2 N R 16 E

TYPE MONUMENT P.K./WASHER
 ON SURFACE - ~~BELOW~~ ON _____
 LEFT - ☉ PAV'T - ~~RIGHT~~ 1.5"
 - TO - EDGE PAVEMENT
 S.L.M. 76+30



GRID: NORTHING: _____ EASTING: _____

RECORD: P.O.T.
 STA. 233+54.05
 FD MINE SPIKE
 3" DOWN
 FD LG R.R.SPIKE
 6" DOWN
 SET MAG/WASHER
 10/6/04, DCH



O.D.O.T. DISTRICT 2 SURVEY OFFICE

PERSONNEL

REFERENCE NO. 7

SHEET 7 OF 30

NOTES HOMAN

DATE 4-14-04

ROUTE SR 162

H.C. HOMAN

WEATHER SUNNY

COUNTY SERNECA

R.C. ARMS

TEMP. 56°
+

TOWNSHIP SCIPIO

SECTION 14

T 2 N R 16 E

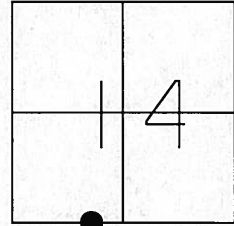
TYPE MONUMENT P.K & WASHER

ON SURFACE - BELOW ON

LEFT ~~TO~~ PAV'T - RIGHT 1.5" LT

TO EDGE PAVEMENT

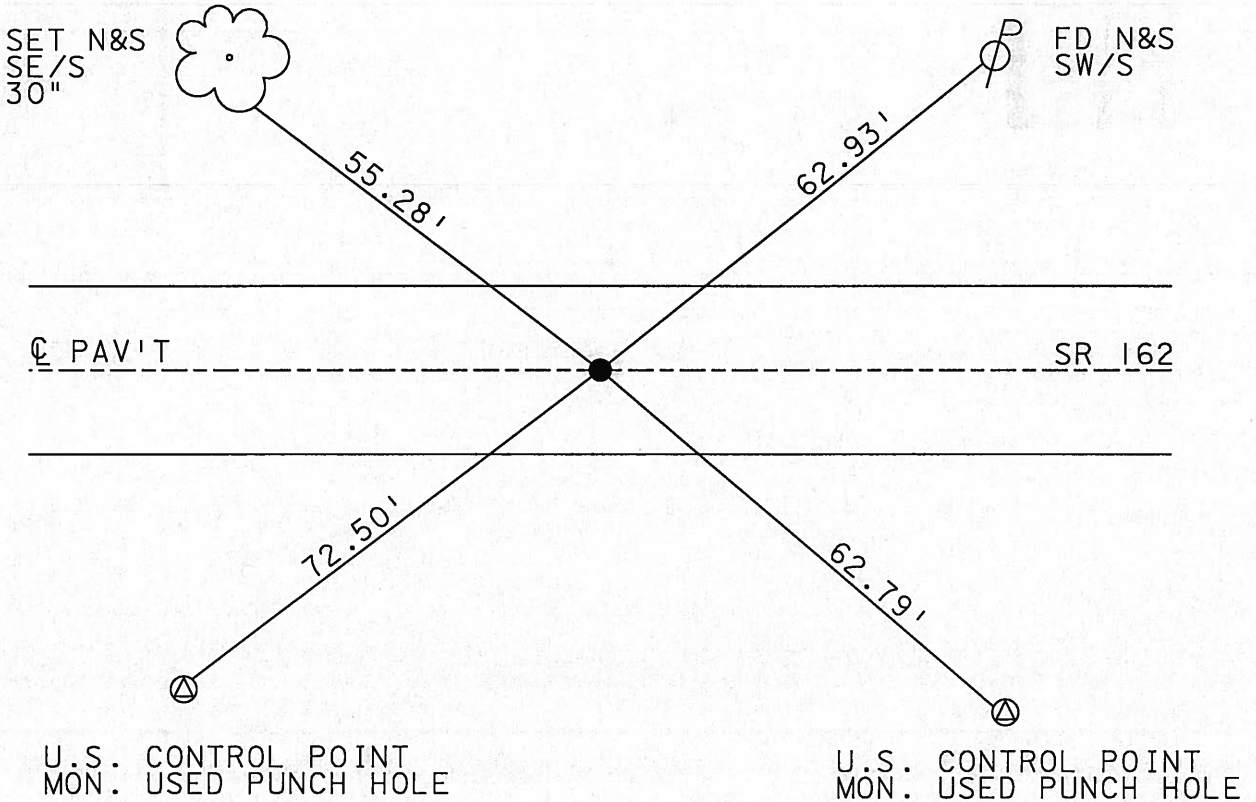
S.L.M. 76+30



1979
2004

RECORD: POT=233+54.05
FD MINE SPIKE 3 1/2" DOWN
FD LG R.R. SPIKE 6" DOWN

SET MAG NAIL
& WASHER
10-06-04
DCH



O.D.O.T. DISTRICT 2 SURVEY OFFICE

PERSONNEL

REFERENCE NO. 7

SHEET 7 OF 30

NOTES People Homan

H.C. BARbour Homan

R.C. Geyman Arms

DATE 4-14-04
~~10-23-90~~

WEATHER Sunny ~~Windy~~

TEMP. 50° 50°

ROUTE 162

COUNTY Sen.

TOWNSHIP Scipio

SECTION 14° 23

T R

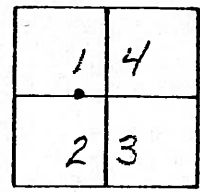
TYPE MONUMENT P.K. Washer

ON SURFACE - ~~BELOW~~ Boat Spike atop RR spike

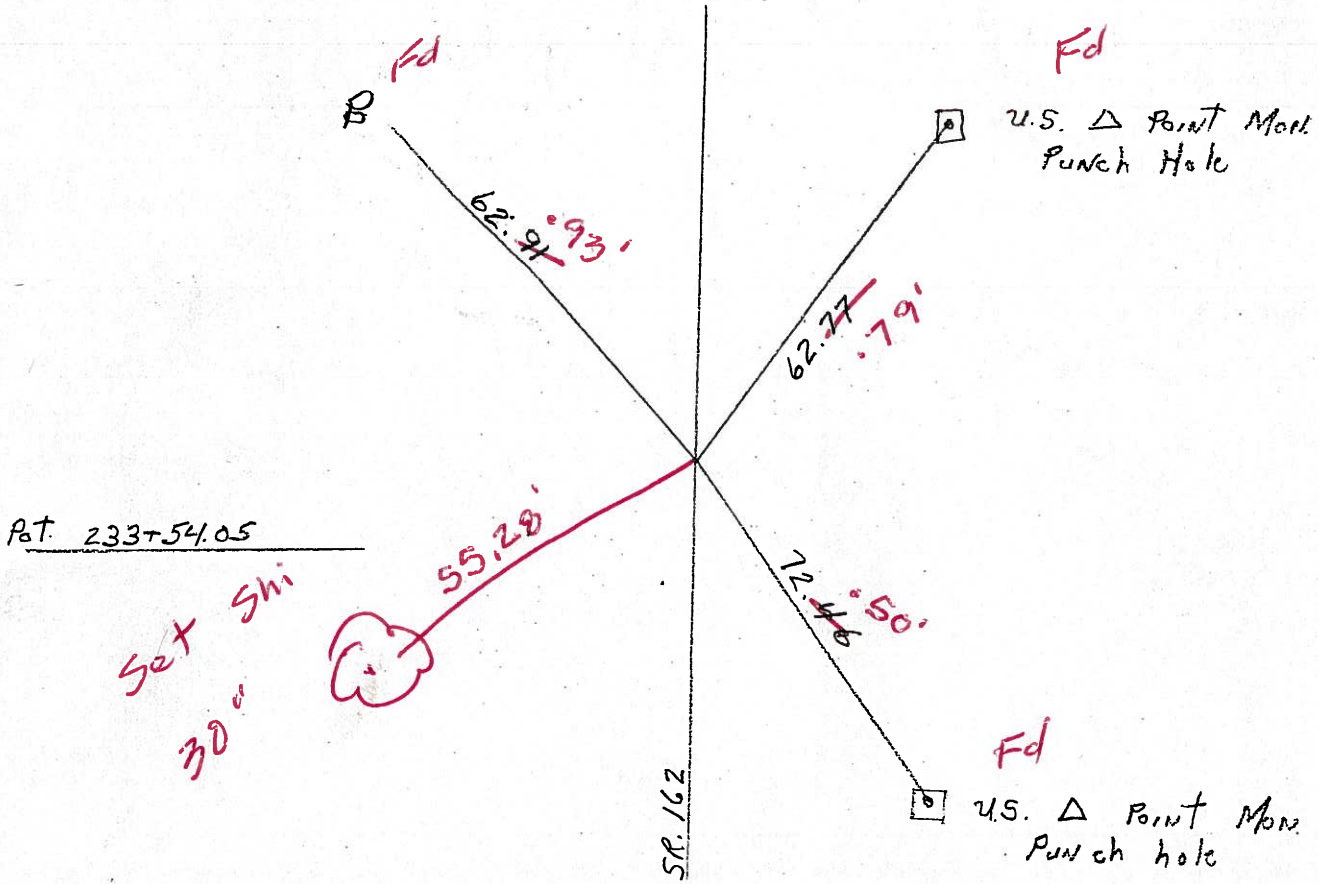
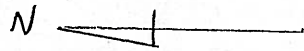
LEFT- PAV'T. - RIGHT 2' LT. & Pav't 1.5' Lt

TO EDGE PAVEMENT

S.L.M. 76+30



Fd Mine Spike 3 1/2" Down
Fd Lg RR Spike 6" Down



Reset Mag Nail & Washer
10-06-04
OCH

O.D.O.T. DISTRICT 2 SURVEY OFFICE

PERSONNEL _____

REFERENCE NO. 7

SHEET 7 OF 30

NOTES Ripple

H.C. Barbour

R.C. Geyman

DATE 10-23-90

WEATHER Sunny - Windy

TEMP. 50°

ROUTE 162

COUNTY Sen.

TOWNSHIP Scipio

SECTION 14-23

T. R.

TYPE MONUMENT P.K. + Washer

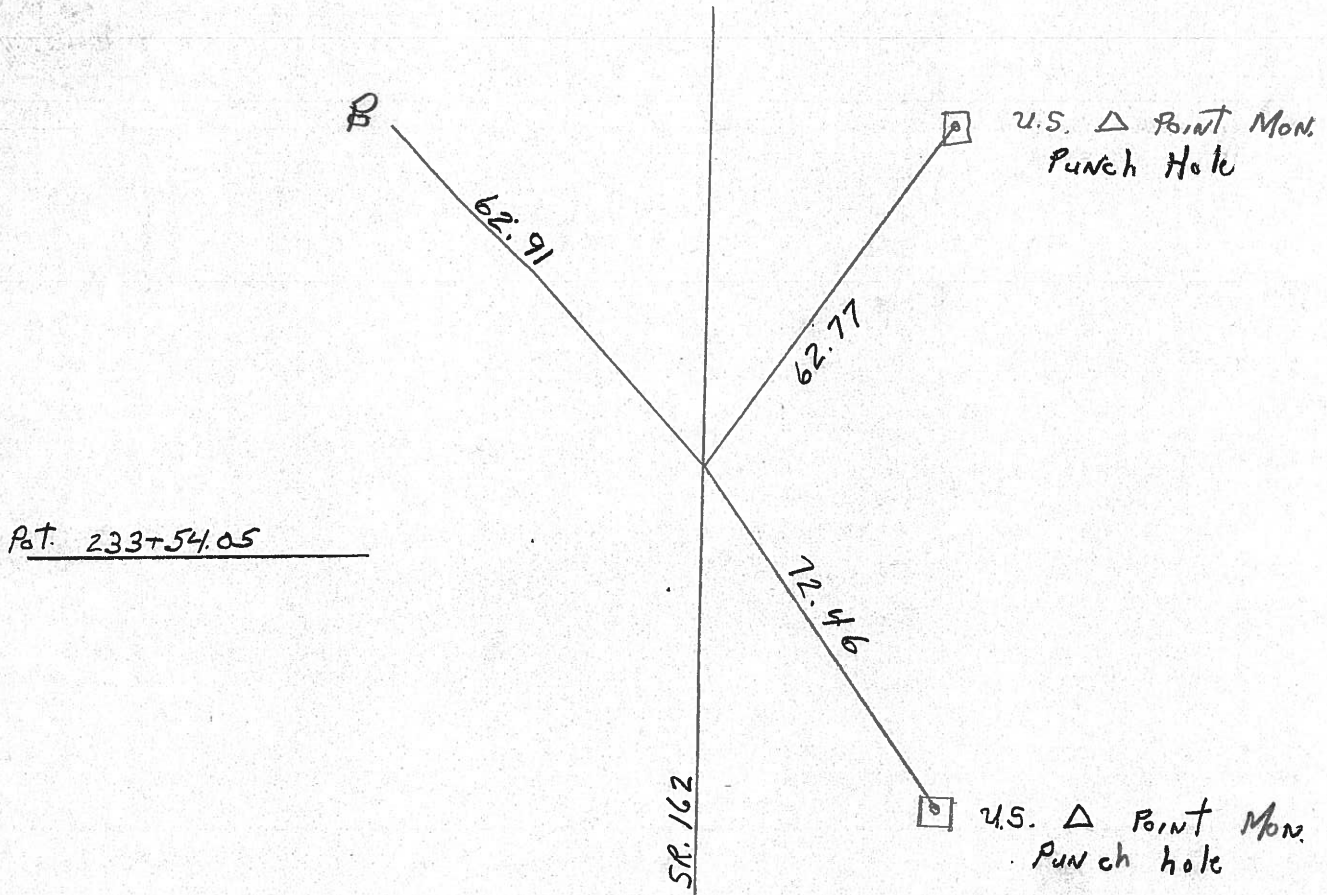
ON SURFACE - BELOW boat spike atop RR spike

LEFT - ☉ PAV'T. - RIGHT 2' LT. ☉ PAV'T

TO EDGE PAVEMENT

S.L.M.

1	4
2	3



County Seneca S.R. #162

Date 1/03/84

Township Scipio

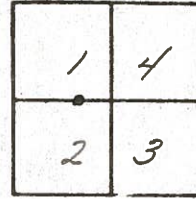
Weather overcast

Section 14 E 23

Temp. 30°

T2N, R16E

Personnel Cronin

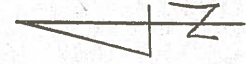


#7

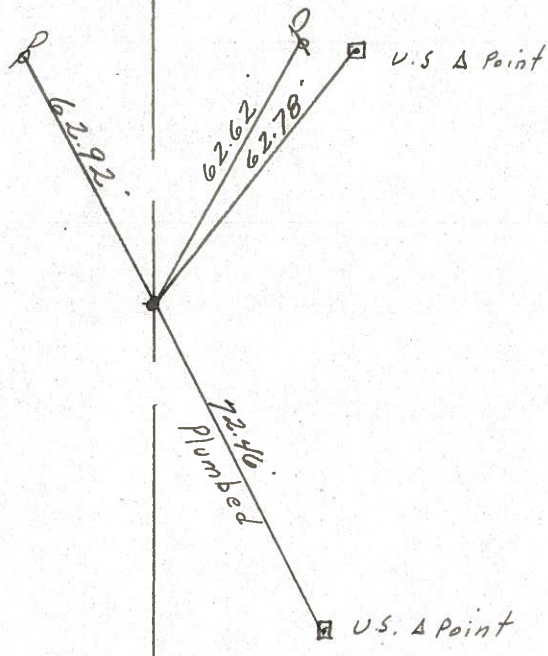
Ripple

Geyman

Barbour



P.O.T
233 + 54.05
Fd. boat spike atop R.R.
Spike Lt of E Point



S.S.R. #1627

County Seneca SR-162

Date 6-11-79

Township Sciprio

Weather Fair

Section 14

Temp. 65°

T₂N, R₁₆E

Personnel Schneider

Mosser

Barbour

14	13
X	
23	24



Z (7)

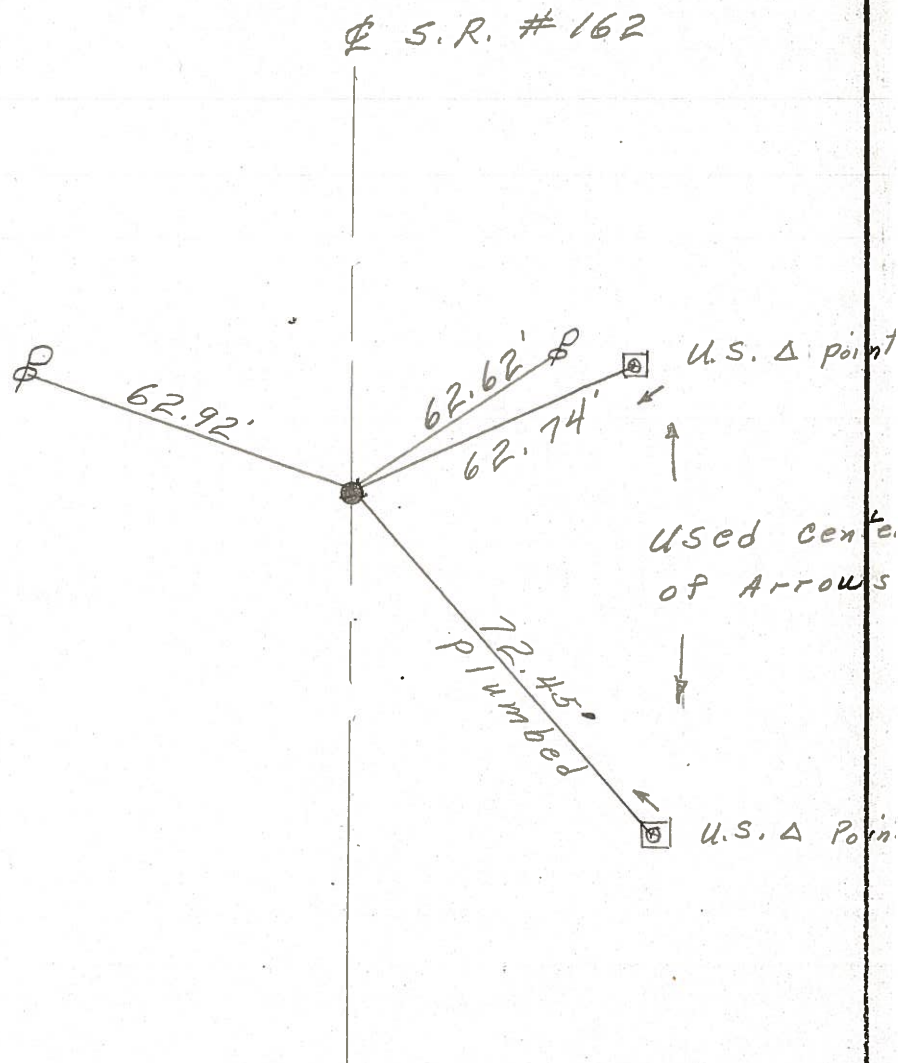
P.O.T.

233 + 54.05

R.R. Spk.

Mine spk. on top

$\Delta = 0^{\circ} 0'$ (Lt. of ϕ)



S.H. 479 Sec. M.

(6)

219+70.4 Set R.R. Spike on £

FD 3-25-04

(7)

233+54.05 R.R. Spike on £

(7)

233+54.05 R.R. Spike on £
FD 4-14-04

(8)

241+26.2 Set R.R. Spike on £

Need Help on Hill Expited

Sight Distance

FD 4-20-04

(9)

268+09.75 R.R. Spike on £

FD 4-13-04

(10)

278+23.1 Set R.R. Spike on £

Need Help

2.

