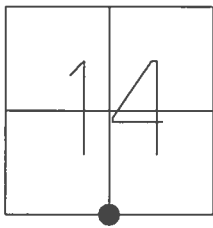


O.D.O.T. DISTRICT 2 SURVEY OFFICE (USE ONLY)

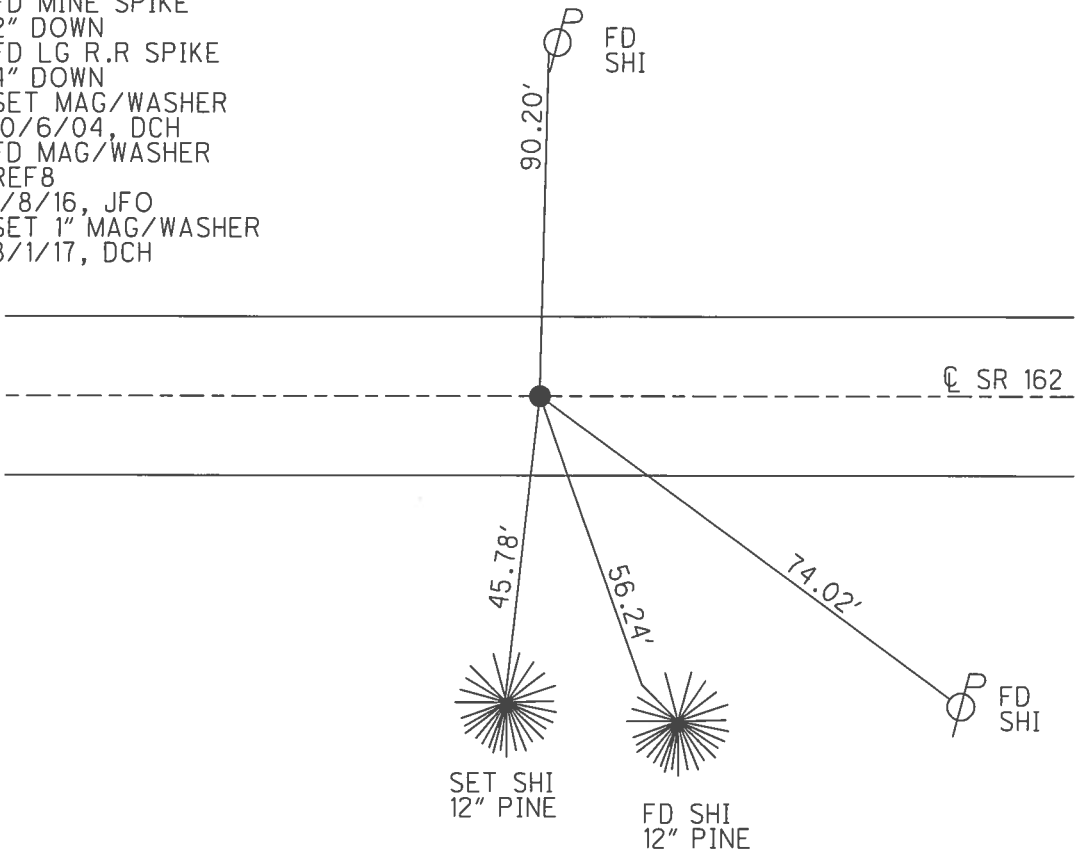
PERSONNEL _____ REFERENCE NO. 8 SHEET 9 OF 32
 NOTES RHOADES DATE 8/1/17 ROUTE SR 162
 H.C. HOMAN WEATHER SUNNY COUNTY SENECA
 R.C. CARSON TEMP. 70° TOWNSHIP SCIPIO
 _____ POORE _____ SECTION 14
 T 2 N R 16 E

TYPE MONUMENT MAG/WASHER
~~ON SURFACE~~ - BELOW ON
 LEFT - ☑ PAV'T - RIGHT ON
 _____ TO _____ EDGE PAVEMENT
 S.L.M. 84+16



GRID: NORTHING: 531618.418 EASTING: 1834512.402

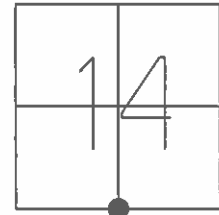
RECORD: P.I.
 $\Delta = 00^{\circ}36' RT$
 FD P.K./WASHER
 1" DOWN
 FD MINE SPIKE
 2" DOWN
 FD LG R.R SPIKE
 4" DOWN
 SET MAG/WASHER
 10/6/04, DCH
 FD MAG/WASHER
 REF8
 1/8/16, JFO
 SET 1" MAG/WASHER
 8/1/17, DCH



O.D.O.T. DISTRICT 2 SURVEY OFFICE (USE ONLY)

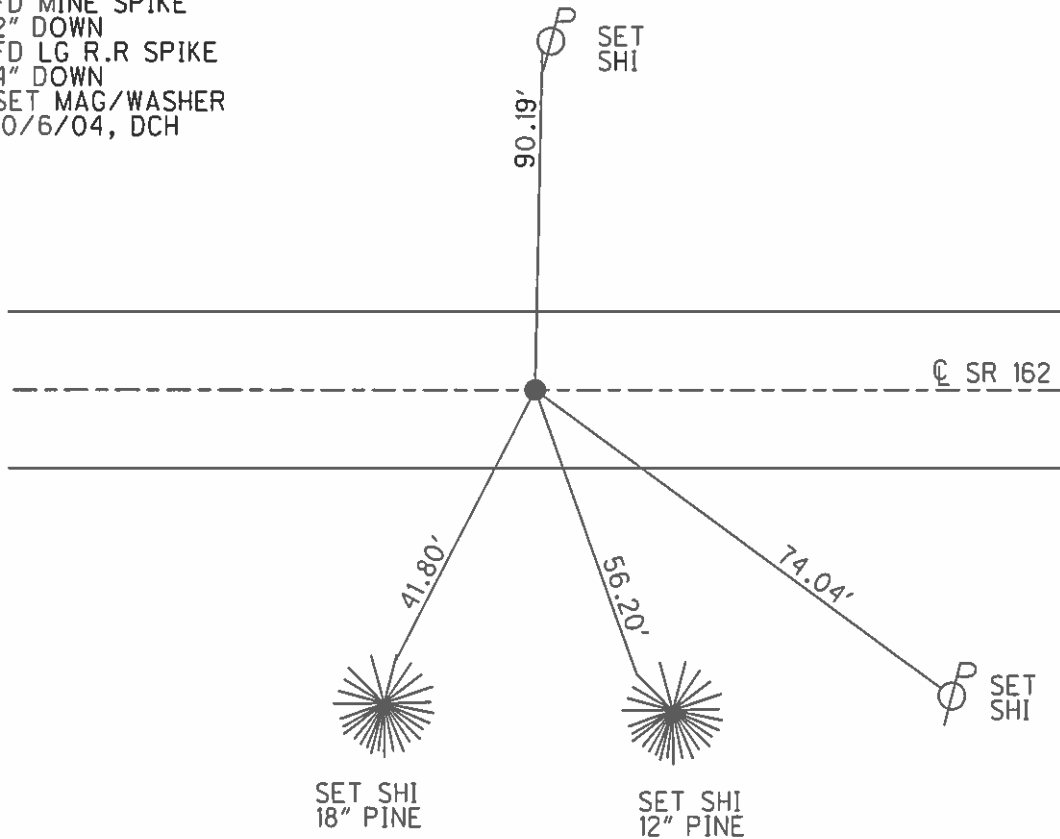
PERSONNEL _____ REFERENCE NO. 8 SHEET 9 OF 32
 NOTES HOMAN DATE 4/20/04 ROUTE SR 162
 H.C. NUHFER WEATHER CLOUDY COUNTY SENECA
 R.C. HOOKE TEMP. 65° TOWNSHIP SCIPIO
ARMS SECTION 14
HUSS T 2 N R 16 E

TYPE MONUMENT P.K./WASHER
~~ON SURFACE~~ - BELOW 1"
 LEFT - ☉ PAV'T - RIGHT ON
- TO - EDGE PAVEMENT
 S.L.M. 84+16



GRID: NORTHING: _____ EASTING: _____

RECORD: P.I.
 $\Delta = 00^{\circ}36'$ RT
 FD P.K./WASHER
 1" DOWN
 FD MINE SPIKE
 2" DOWN
 FD LG R.R SPIKE
 4" DOWN
 SET MAG/WASHER
 10/6/04, DCH



O.D.O.T. DISTRICT 2 SURVEY OFFICE

PERSONNEL

REFERENCE NO. 8

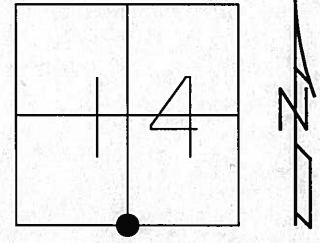
SHEET 8 OF 30

NOTES HOMAN
 H.C. HUHFER
 R.C. HOOKER
ARMS
HUSS

DATE 4-20-04
 WEATHER CLOUDY
 TEMP. 65°

ROUTE SR 162
 COUNTY SENECA
 TOWNSHIP SCIPPIO
 SECTION 14
T 2 N R 16 E

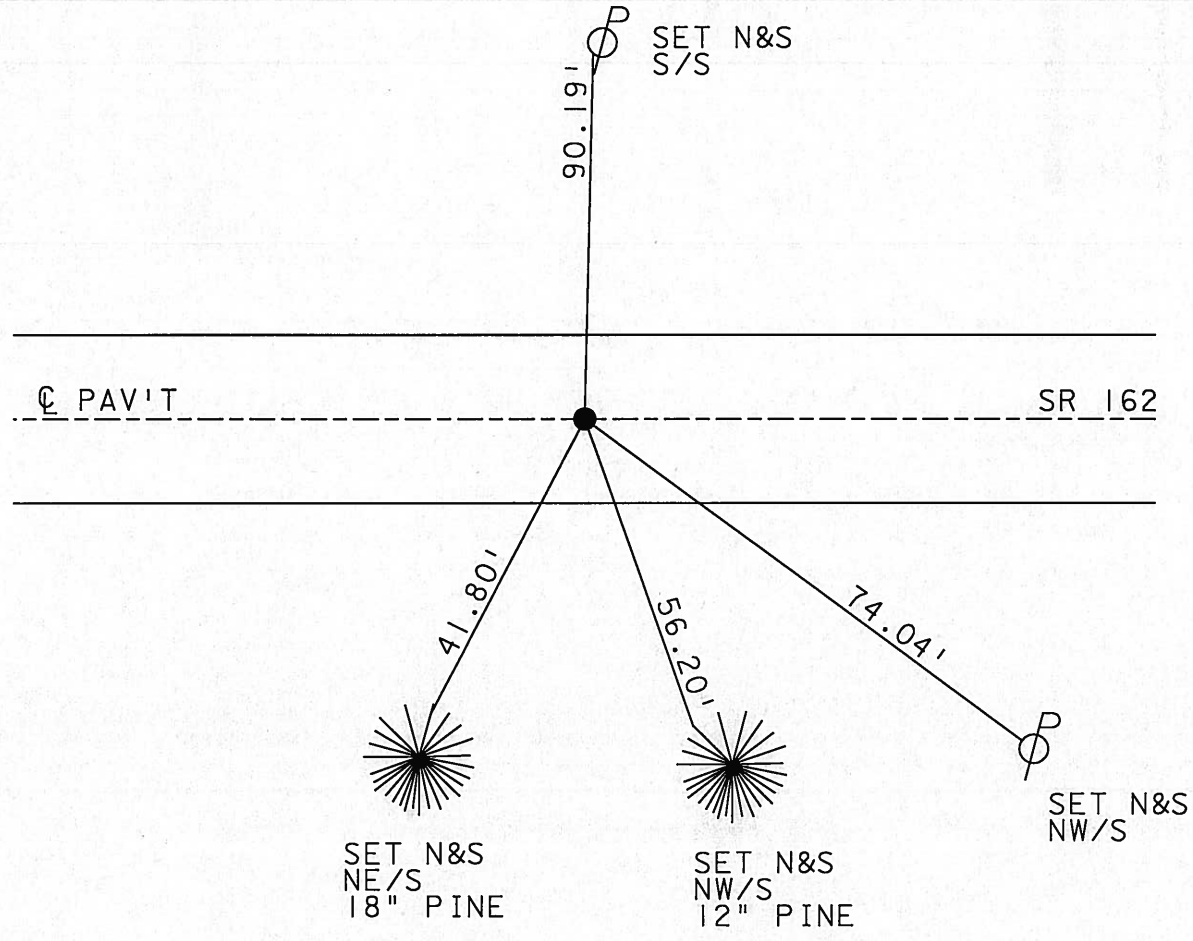
TYPE MONUMENT PK & WASHER
~~ON SURFACE~~ - BELOW 1 1/2"
~~LEFT - C PAV'T - RIGHT~~ ON
TO EDGE PAVEMENT
 S.L.M. 84+16



1979
2004

RECORD: PI DELTA = 00°-36' RT 241+26.20
 FD PK NAIL & WASHER 1 1/2" DOWN
 FD MINE SPIKE 2 1/2" DOWN
 FD LG R.R SPIKE 4 3/4" DOWN

SET MAG NAIL
 & WASHER
 10-06-04
 DCH



O.D.O.T. DISTRICT 2 SURVEY OFFICE

PERSONNEL

REFERENCE NO. 8

SHEET 8 OF 30

NOTES Ripple Hanan

H.C. Barbour Mufser

R.C. Geyman Hooker

Arms
Huss

DATE 4-20-04
~~10-23-90~~

WEATHER Sunny Windy Cloudy

TEMP. 50° 50°

ROUTE 162

COUNTY Sen.

TOWNSHIP Scipio

SECTION 14 23

T 2 N R 16 E

TYPE MONUMENT PK & Washer

ON ~~SURFACE~~ BELOW beat Spike Atop RR Spike

LEFT-€ PAV'T. - RIGHT € on

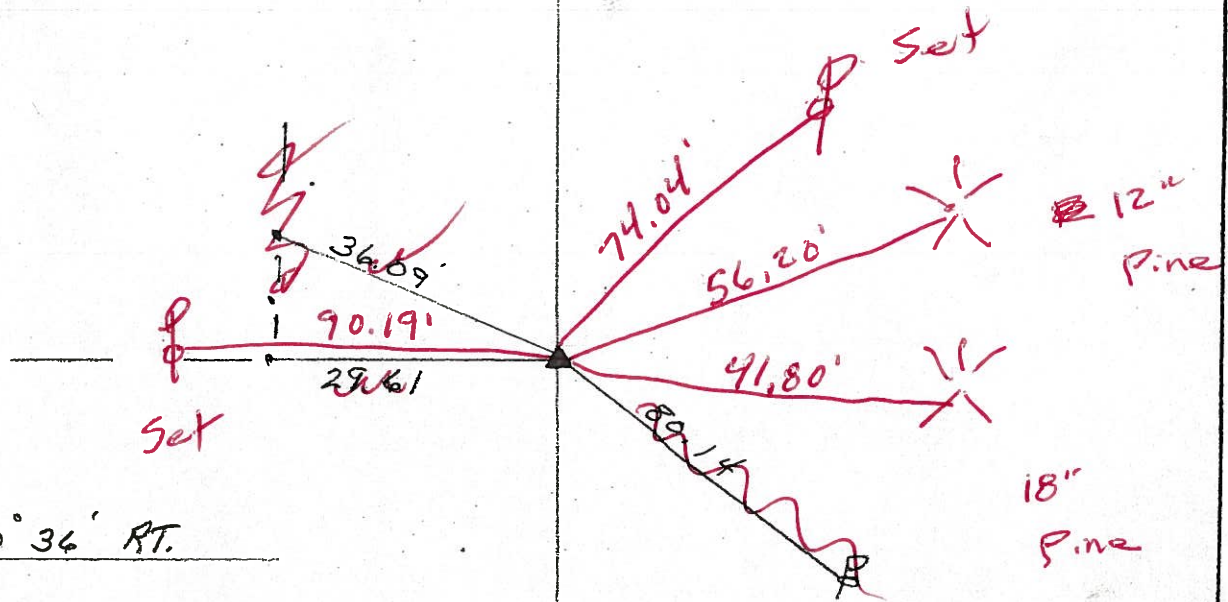
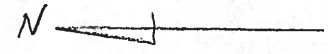
TO EDGE PAVEMENT

S.L.M. 241 + 26.20 84 + 16

1	4
2	3



Fd PK Nail & Washer 1 1/2" Down
Fd Mine Spike 2 1/2" Down
Fd Log RR Spike 4 3/4" Down



P.I. Δ = 00° 36' RT.

52 162

Reset Mas Nail & Washer
16-06-04
DCH

O.D.O.T. DISTRICT 2 SURVEY OFFICE

PERSONNEL

REFERENCE NO. 8

SHEET 8 OF 30

NOTES Ripple

H.C. BARbour

R.C. Geyman

DATE 10-23-90

WEATHER Sunny Windy

TEMP. 50°

ROUTE 162

COUNTY Sen.

TOWNSHIP Scipio

SECTION 14-23

T 2 N R 16 E

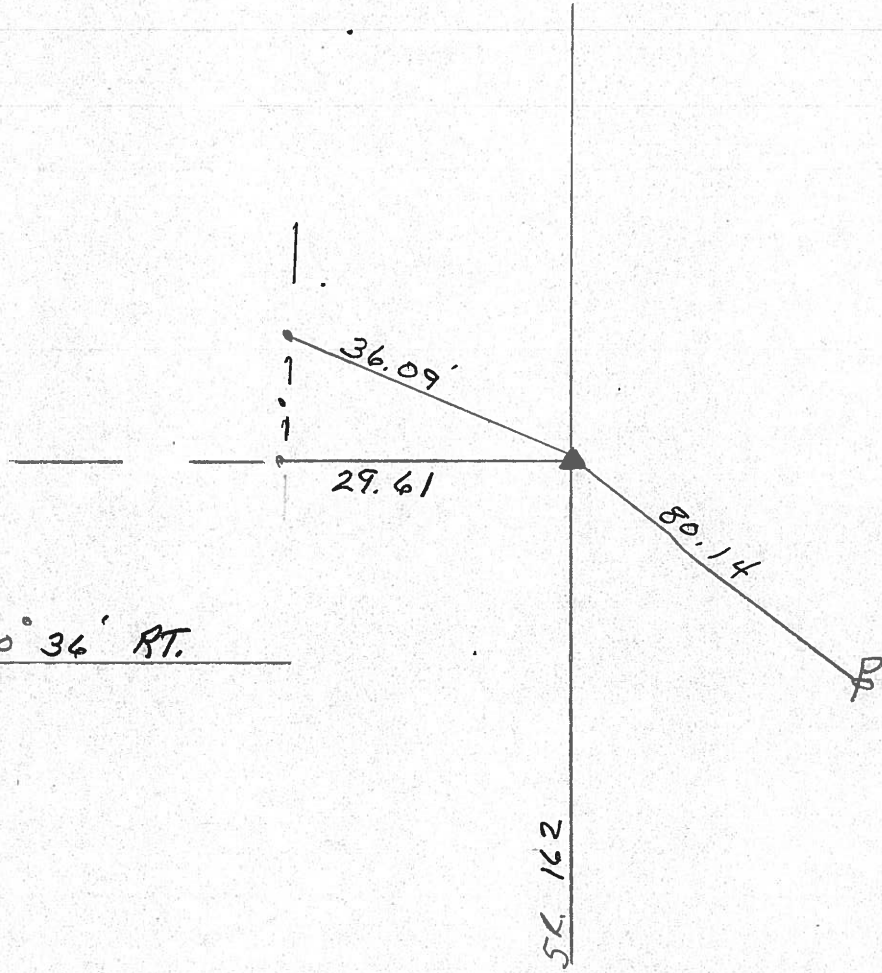
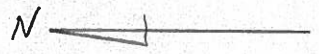
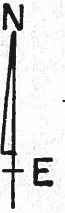
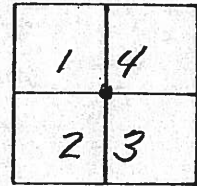
TYPE MONUMENT P.K. + Washer

ON SURFACE - BELOW boat spike Atop R.R. spike

LEFT - € PAV'T. - RIGHT £

TO EDGE PAVEMENT

S.L.M. 241 + 26.20



P.I. Δ = 00° 34' RT.

County Seneca S.R. #162

Date 1/03/84

Township Scipio

Weather overcast

Section 14 E 23

Temp. 30°

T2N, R16E

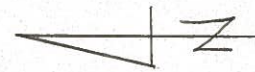
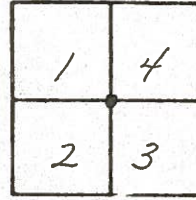
Personnel Cronin

Ripple

Geyman

Barbour

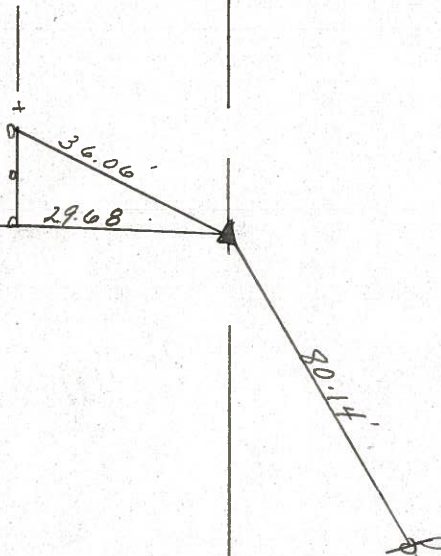
#8



P.I. $\Delta = 00^{\circ}36' R$

241 + 26.20

Set P.K. & washer atop
boat spike & washer atop
R.R. spike



25R #1627

County Seneca SR-162

Date 6-11-79

Township Sciprio

Weather Fair

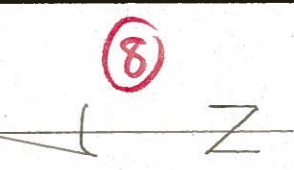
Section 14

Temp. 65°

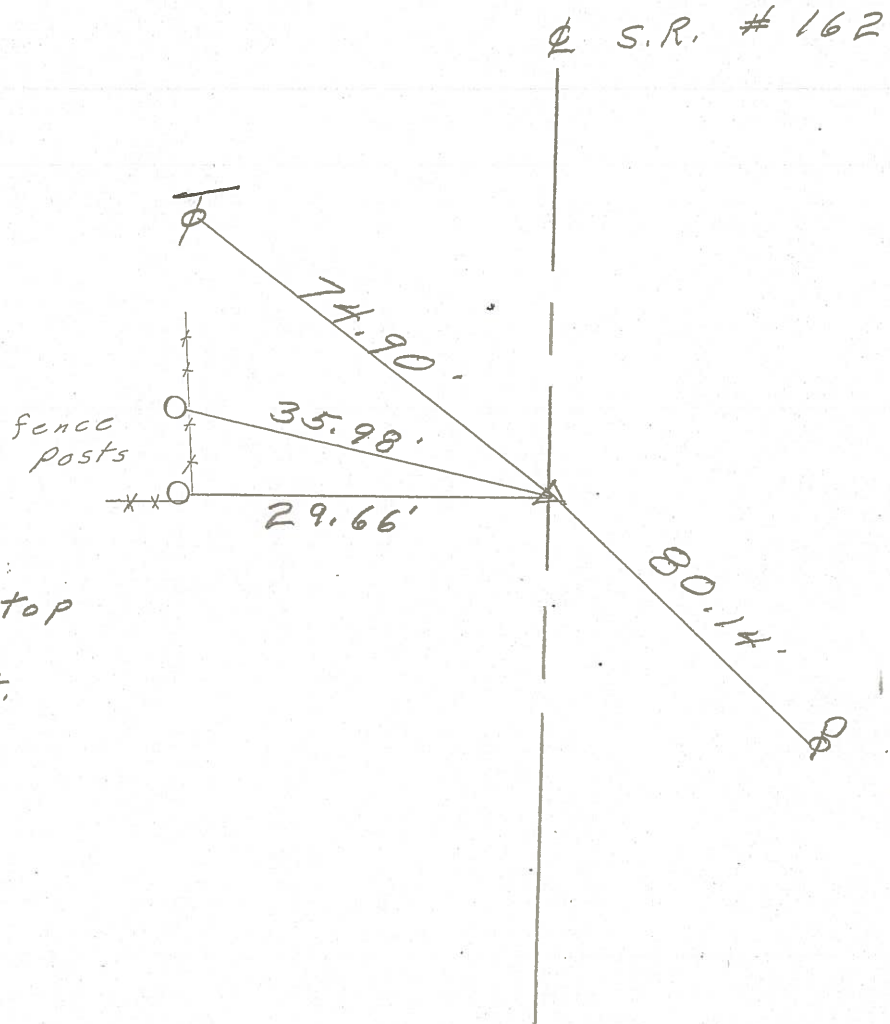
T₂N, R₁₆E

Personnel Schneider

14	13
X	
23	24



P.I.
 241 + 26.2
 R.R. SPK.
 Mine spk on top
 $\Delta = 0^\circ 36' \text{ RT.}$



S. H. 479 Sec. M.

(6)

219+40.4

Set R.R. Spike on \angle

FD 3-25-04

(7)

(7)

233+54.05

R.R. Spike on \angle

FD 4-14-04

(8)

241+26.2

Set R.R. Spike on \angle

Need Help on Hill Limited

Sight Distance

(7)

FD 4-20-04

(9)

268+07.75

R.R. Spike on \angle

FD 4-13-04

(10)

278+23.9

Set R.R. Spike on \angle

Need Help

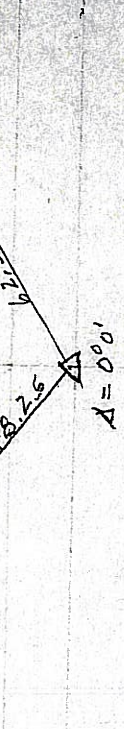
2.

E

Center Gum 4
B.M. 10



10" Apple \angle N.E. 52.5'



10" Apple \angle N.E. 52.5'



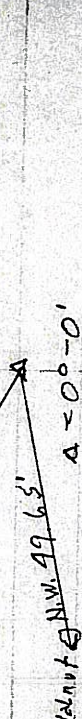
10" Apple \angle N.E. 52.5'



10" Apple \angle N.E. 52.5'



10" Apple \angle N.E. 52.5'



W