

O.D.O.T. DISTRICT 2 SURVEY OFFICE (USE ONLY)

PERSONNEL _____ REFERENCE NO. 9 SHEET 10 OF 32

NOTES RHOADES _____ DATE 8/1/17 _____ ROUTE SR 162
 H.C. HOMAN _____ WEATHER SUNNY _____ COUNTY SENECA
 R.C. CARSON _____ TEMP. 77° _____ TOWNSHIP SCIPIO
 POORE _____ SECTION 13
 T 2 N R 16 E

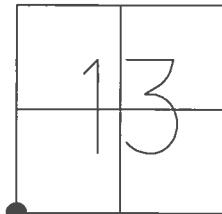
TYPE MONUMENT MAG/WASHER

~~ON SURFACE~~ - BELOW ON

LEFT - CL PAV'T - ~~RIGHT~~ 1'

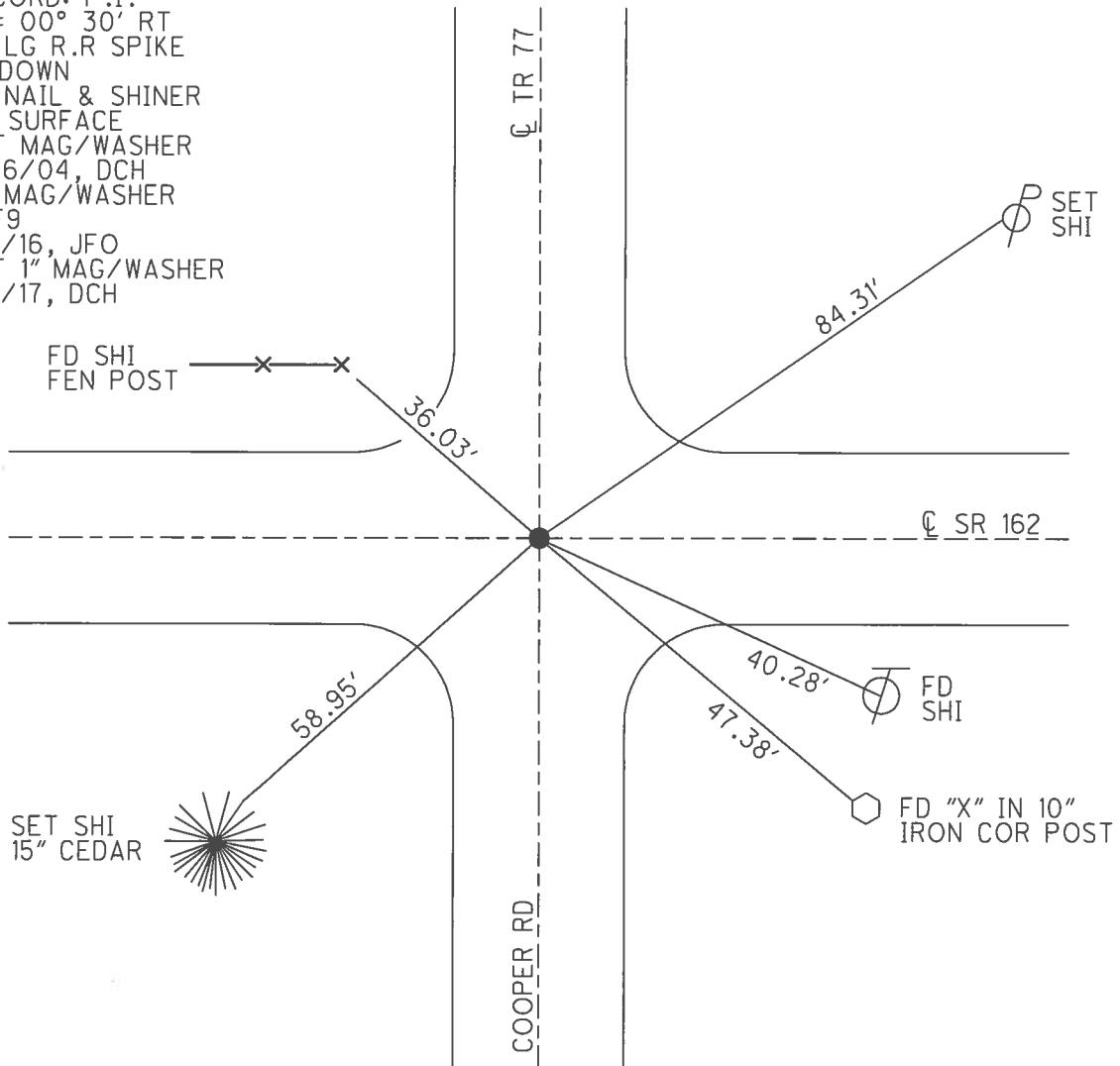
- TO - EDGE PAVEMENT

S.L.M. 110+93



GRID: NORTHING: 531600.273 EASTING: 1837196.261

RECORD: P.I.
 $\Delta = 00^\circ 30' RT$
 FD LG R.R SPIKE
 5" DOWN
 FD NAIL & SHINER
 ON SURFACE
 SET MAG/WASHER
 10/6/04, DCH
 FD MAG/WASHER
 REF9
 1/8/16, JFO
 SET 1" MAG/WASHER
 8/1/17, DCH

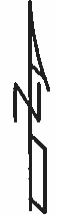
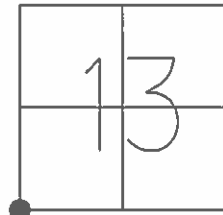


O.D.O.T. DISTRICT 2 SURVEY OFFICE (USE ONLY)

PERSONNEL _____ REFERENCE NO. 9 SHEET 10 OF 32

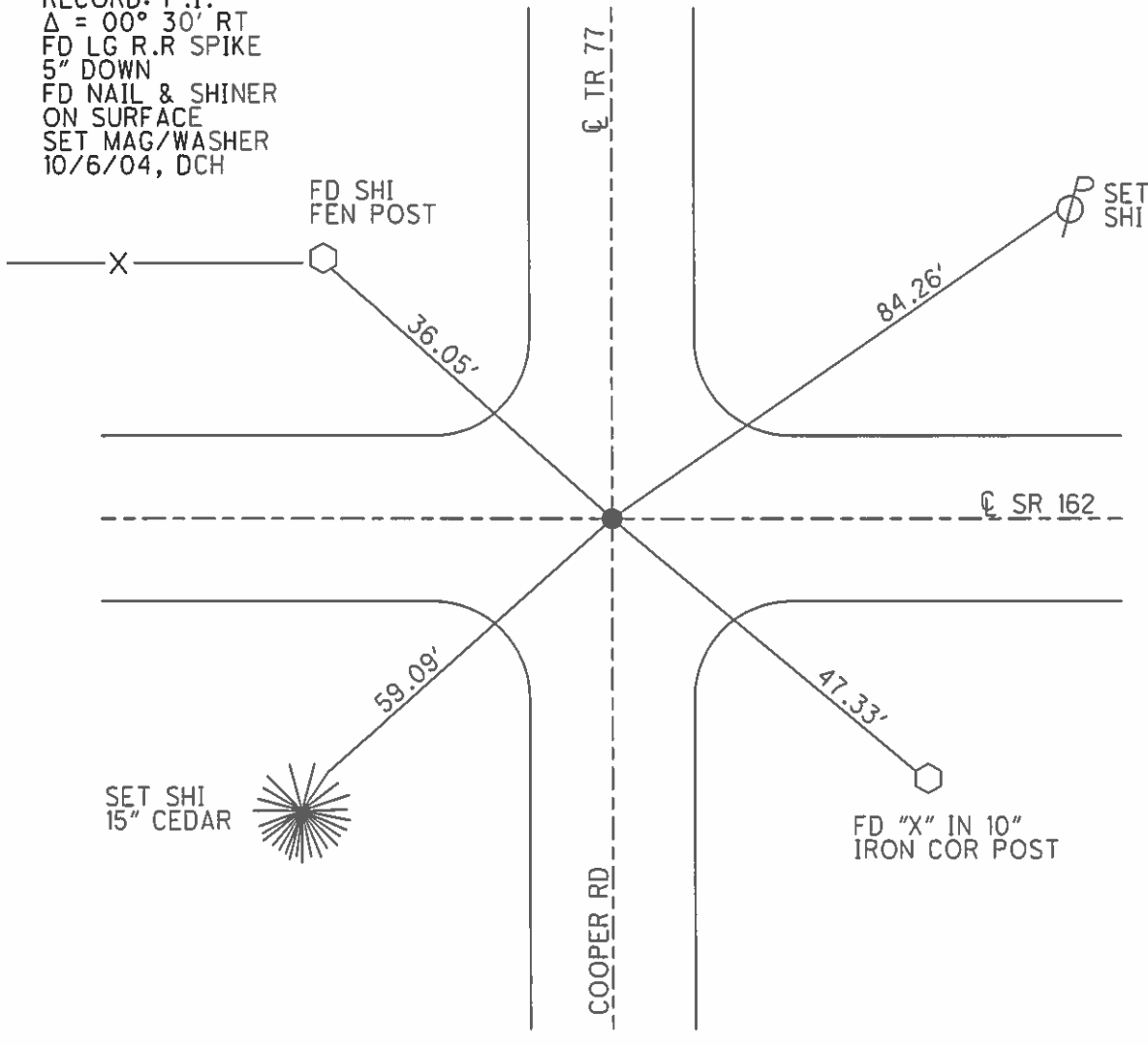
NOTES HOMAN DATE 4/13/04 ROUTE SR 162
 H.C. HOMAN WEATHER CLOUDY COUNTY SENECA
 R.C. ARMS TEMP. 50° TOWNSHIP SCIPIO
 SECTION 13
 T 2 N R 16 E

TYPE MONUMENT R.R. SPIKE
~~ON SURFACE~~ - BELOW 5"
 LEFT - ☉ PAV'T - ~~RIGHT~~ 1'
 - TO - EDGE PAVEMENT
 S.L.M. 110+93



GRID: NORTHING: _____ EASTING: _____

RECORD: P.I.
 $\Delta = 00^\circ 30' \text{ RT}$
 FD LG R.R SPIKE
 5" DOWN
 FD NAIL & SHINER
 ON SURFACE
 SET MAG/WASHER
 10/6/04, DCH



O.D.O.T. DISTRICT 2 SURVEY OFFICE

PERSONNEL

REFERENCE NO. 9

SHEET 9 OF 30

NOTES HOMAN

DATE 4-13-04

ROUTE SR 162

H.C. HOMAN

WEATHER CLOUDY

COUNTY SENECA

R.C. ARMS

TEMP. 50°

TOWNSHIP SCIPPIO

SECTION 13

T 2 N R 16 E

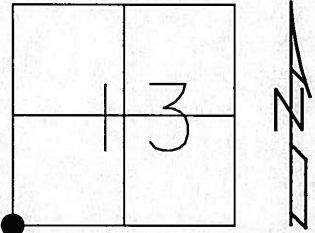
TYPE MONUMENT RR SPIKE

~~ON SURFACE~~ - BELOW 5"

LEFT ~~C PAV'T~~ RIGHT 1' LT

TO EDGE PAVEMENT

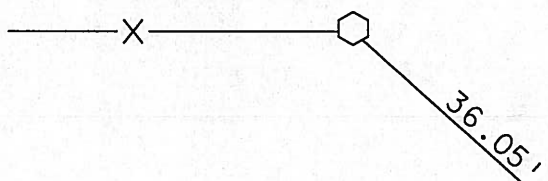
S.L.M. 110+93



1979
2004
RECORD: PI DELTA = 00°30' RT. 2084 09.75
FD LG R.R SPIKE 5" DOWN
FD NAIL & SHINER ON SURFACE

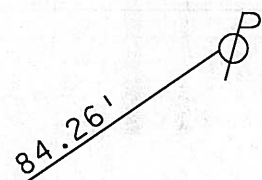
SET MAG NAIL
& WASHER
10-06-04
DCH

FD N&S
SE/S
FENCE POST



Cooper Rd
Twp Rd 77

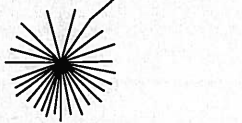
SET N&S
SW/S



C PAV'T

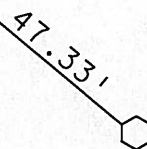
SR 162

SET N&S
NE/S
15" CEDAR



C PAV'T
Dirt Rd

FD "X" IN 10"
IRON COR POST



O.D.O.T. DISTRICT 2 SURVEY OFFICE

PERSONNEL

REFERENCE NO. _____

SHEET _____ OF _____

NOTES RIPPLE

H.C. BARBOUR

DATE 2/05/91

ROUTE S.R.#162

R.C. HOFFMAN

WEATHER Cloudy

COUNTY Seneca

BARNHISEL

TEMP. 34°

TOWNSHIP Scipio

Loehrke

SECTION 13 & 24

T. R. N. R. 16 E

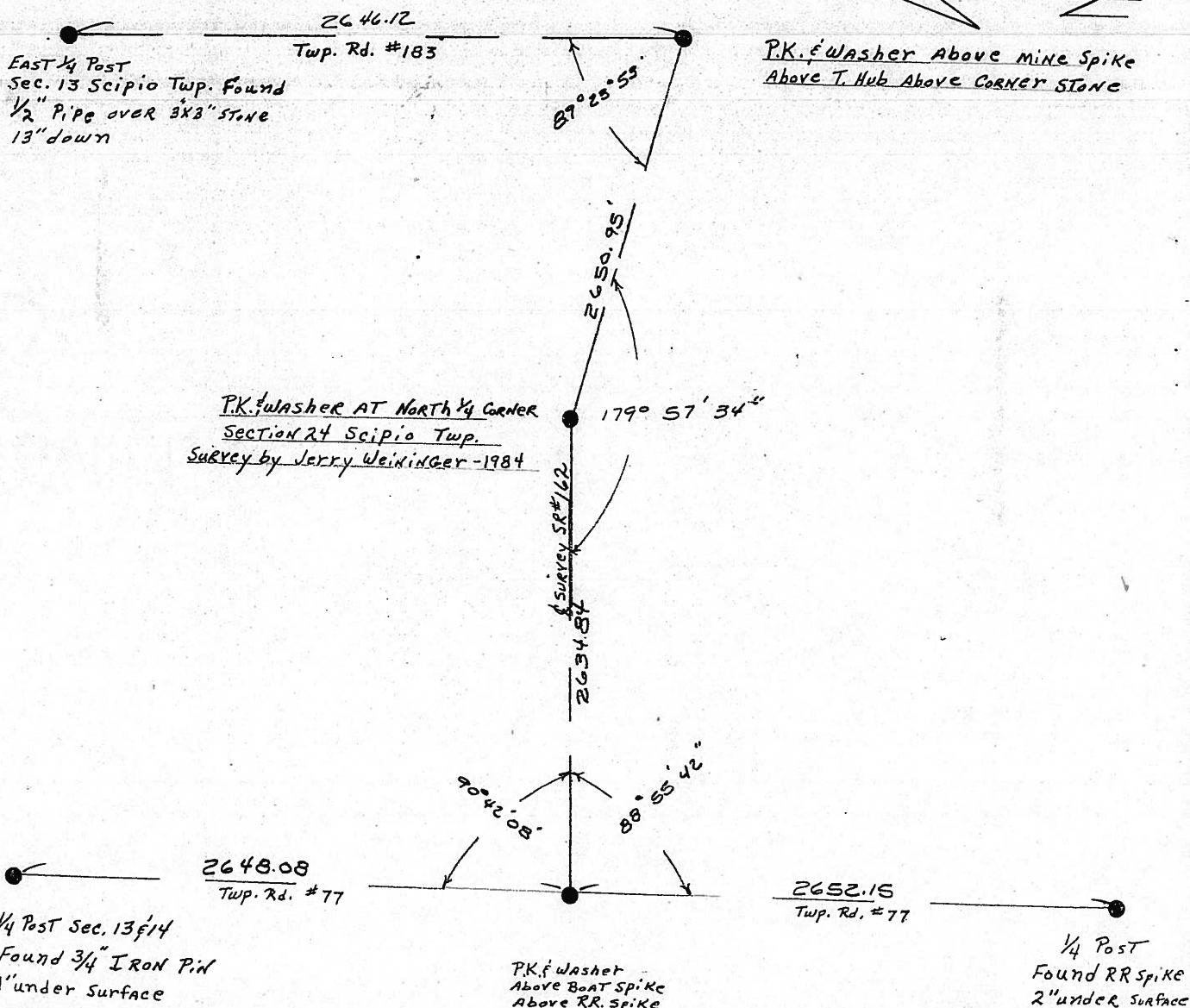
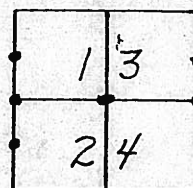
TYPE MONUMENT Alignment

ON SURFACE - BELOW _____

LEFT- & PAV'T. - RIGHT _____

TO _____ EDGE PAVEMENT

S.L.M. 2.79



County Seneca SR-162

Date 6-11-79

Township Sciprio

Weather Fair

Section 14, 13 & 23, 24

Temp. 65°

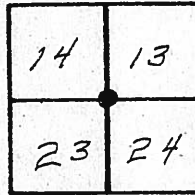
T2N, R16E

Personnel Schneider

Mosser

Barbour

Sta 110+93



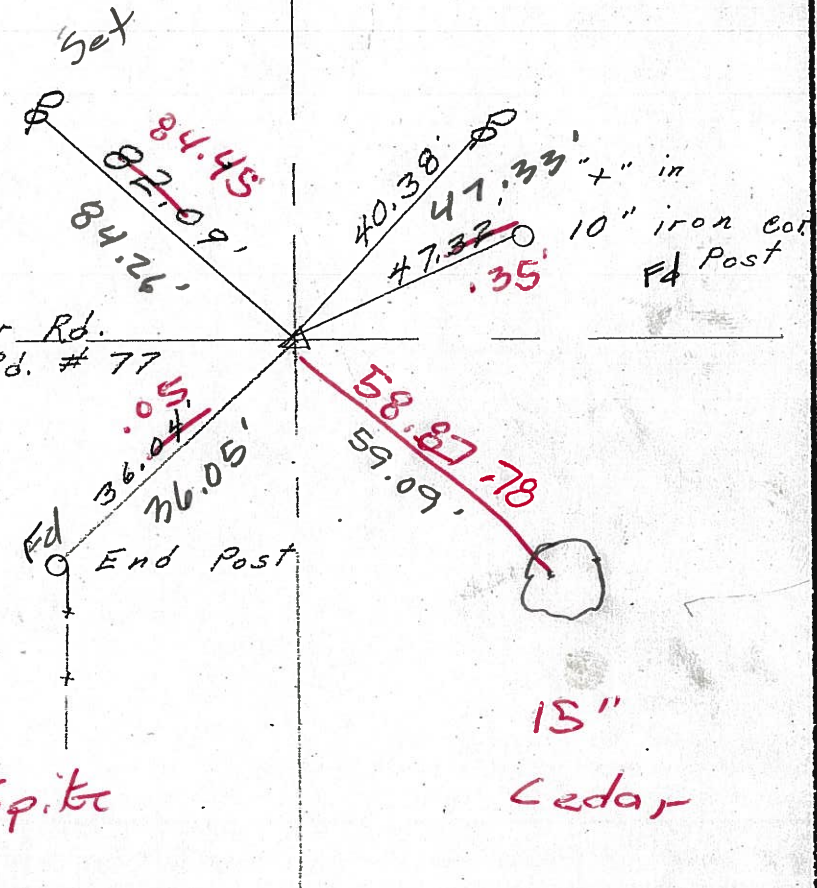
Fd Nail & Shiner on surface
 4-13-04 Cloudy 50°
 Homan Notes HC

Note: Use Pencil
 Distance these
 Are to Large
 RR Spike

Arms RC
 S.R. 162
 1.0' Lt of E

P. I.
 268+09.75
 R.R. spk.
 Mine spk. on top
 Lt. of E
 $\Delta = 0^\circ 30' RT.$

Cooper Rd.
 Twp. Rd. # 77



Fd Lg RR Spike
 5" Down

Reset Mag Nail & Wash
 10-06-04
 DC4

O.D.O.T. DISTRICT 2 SURVEY OFFICE

PERSONNEL _____

REFERENCE NO. 9

SHEET 9 OF 30

NOTES Ripple

H.C. Baebour

R.C. Geyman

DATE 10-23-90

WEATHER Sunny Windy

TEMP. 50

ROUTE 162

COUNTY Sen.

TOWNSHIP Scipio

SECTION 24

T 2 N R 16 E

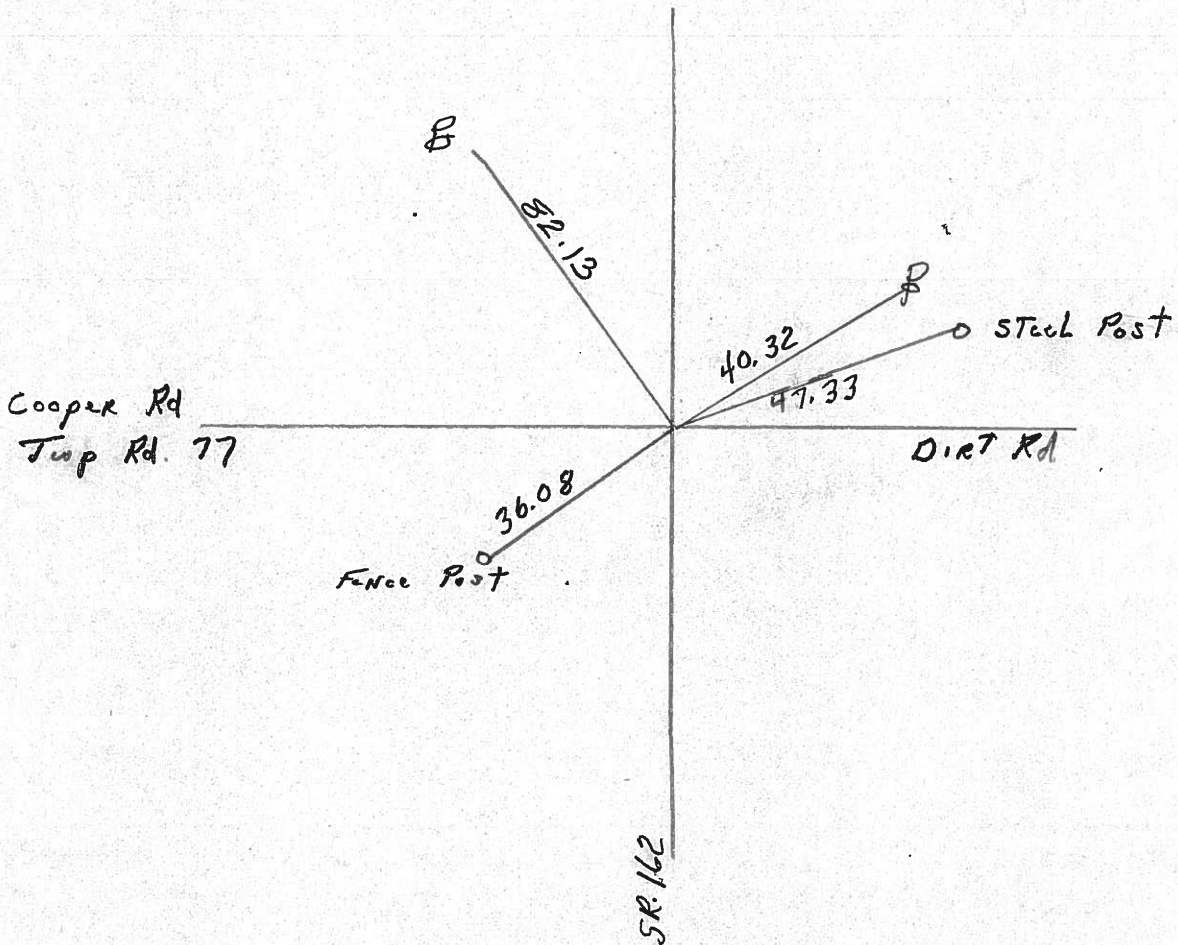
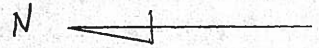
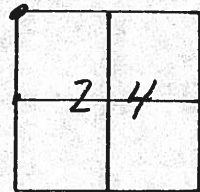
TYPE MONUMENT P.K. & Washer

ON SURFACE - BELOW Boat Spike - RR Spike below

LEFT - ☉ PAV'T. - RIGHT _____

TO _____ EDGE PAVEMENT

S.L.M. 268 + 09.75



O.D.O.T. DISTRICT 2 SURVEY OFFICE

PERSONNEL

REFERENCE NO. 9

SHEET 1 OF 3

NOTES HOFFMAN

H.C. LOSHRKE

R.C. BARNHISEL

DATE 6-20-90

WEATHER OVERCAST

TEMP. 70°

ROUTE SR 162

COUNTY SENECA

TOWNSHIP Scipio

SECTION 24

T2 N R 16 E

TYPE MONUMENT Boat spike

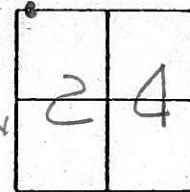
ON SURFACE - BELOW 1 1/2"

LEFT - & PAV'T. - RIGHT YES

TO EDGE PAVEMENT

S.L.M. _____

NOTE:
MAY OR
MAY NOT
BE ON
N-S SECTION
LINE
See PLANS



Record:

P.I. $\Delta = 00^\circ - 30'$ R.T.

Sta. 268+09.75

Boat spike above

R.R. spike

Set shi
SE/S
Fence Post

36.08

Point Cooper Rd.
Twp. Rd. 77

82.13

Pd. shi
sw/s

Point SR 162

Point SR 162
SECTION LINE

40.32

47.33

Pd shi
NW/S

Pd. "t" NW side
steel Post

Dirt Road
T.R. 77

County Seneca S.R. #162

Date 1/03/84

Township Scipio

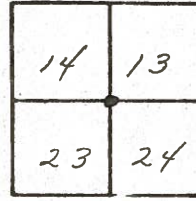
Weather overcast

Section 13, 14, 23, 24

Temp. 30°

T2N, R16E

Personnel Cronin



#9

Ripple

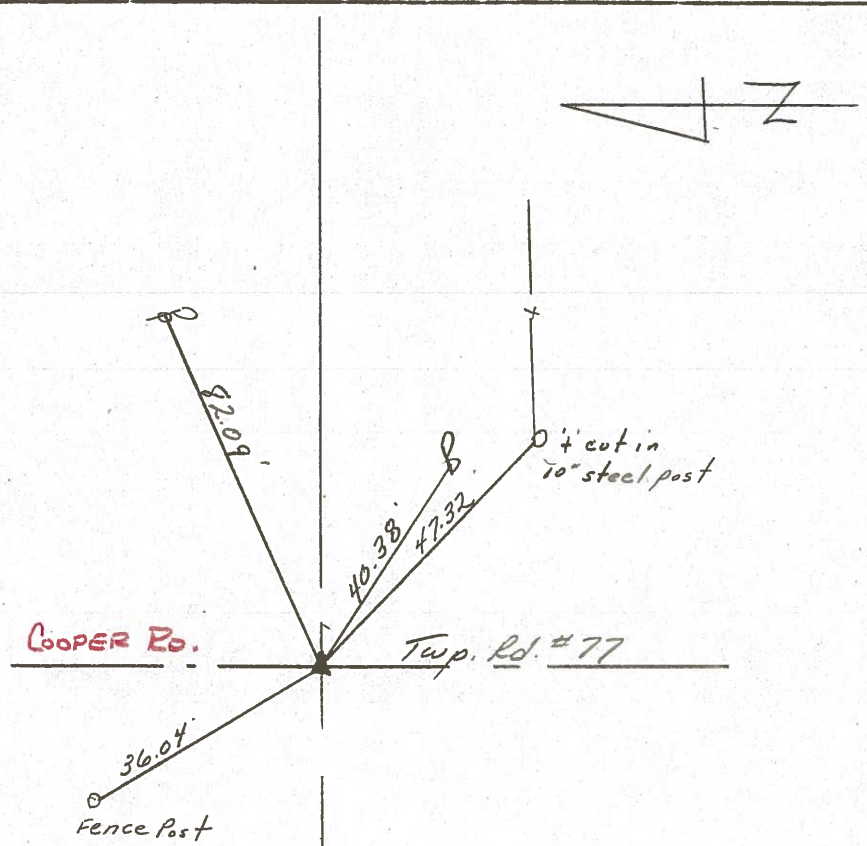
Geyman

Barbour

P.T. A = 00°30' Rt.

268 + 09.75

Fd boat spike atop R.R. spike



S.S.R. #1627

County Seneca SR-162

Date 6-11-79

Township Sciprio

Weather Fair

Section 14, 13 & 23, 24

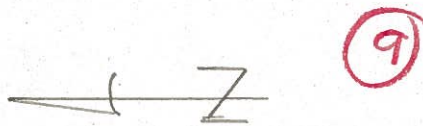
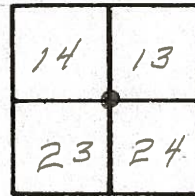
Temp. 65°

T2N, R16E

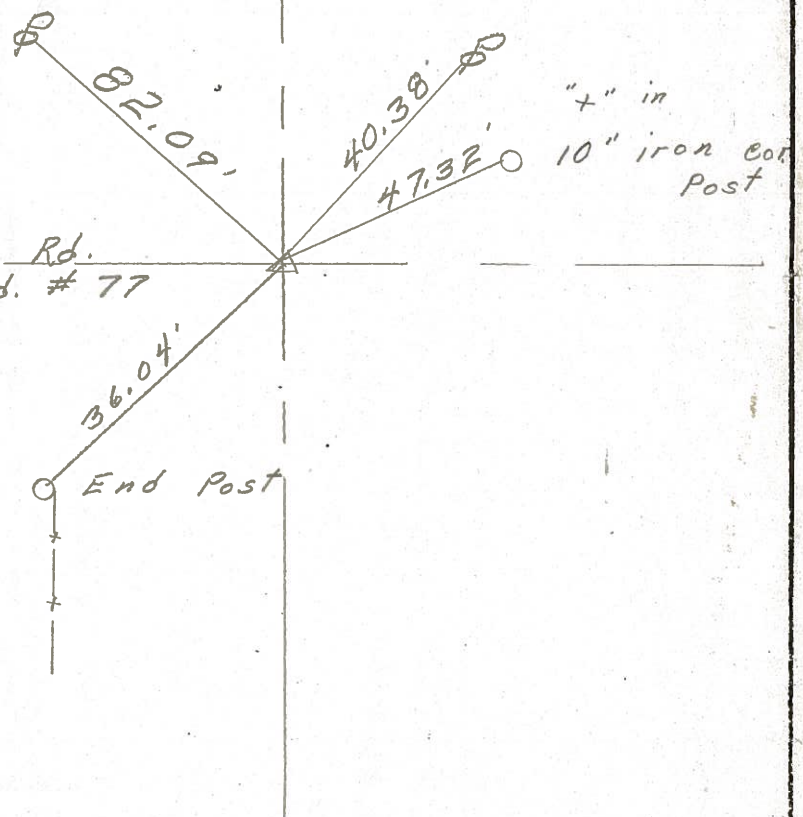
Personnel Schneider

Mosser

Barbour



Q. S.R. 162



P. I.

268+09.75

R. R. SPK.

Mine spk. on top

Lt. of E

$\Delta = 0^{\circ} 30' \text{ Rt.}$

S. H. 479 Sec. M.

(6)

219+40.4

Set R.R. Spike

Fd 3-25-04

(7)

(7)

233+54.05

R.R. Spike on E

Fd 4-14-04

(8)

241+26.2

Set R.R. Spike on E

Need Help on Hill Limited

Sight Distance Fd 4-20-04

(9)

268+09.75

R.R. Spike on E

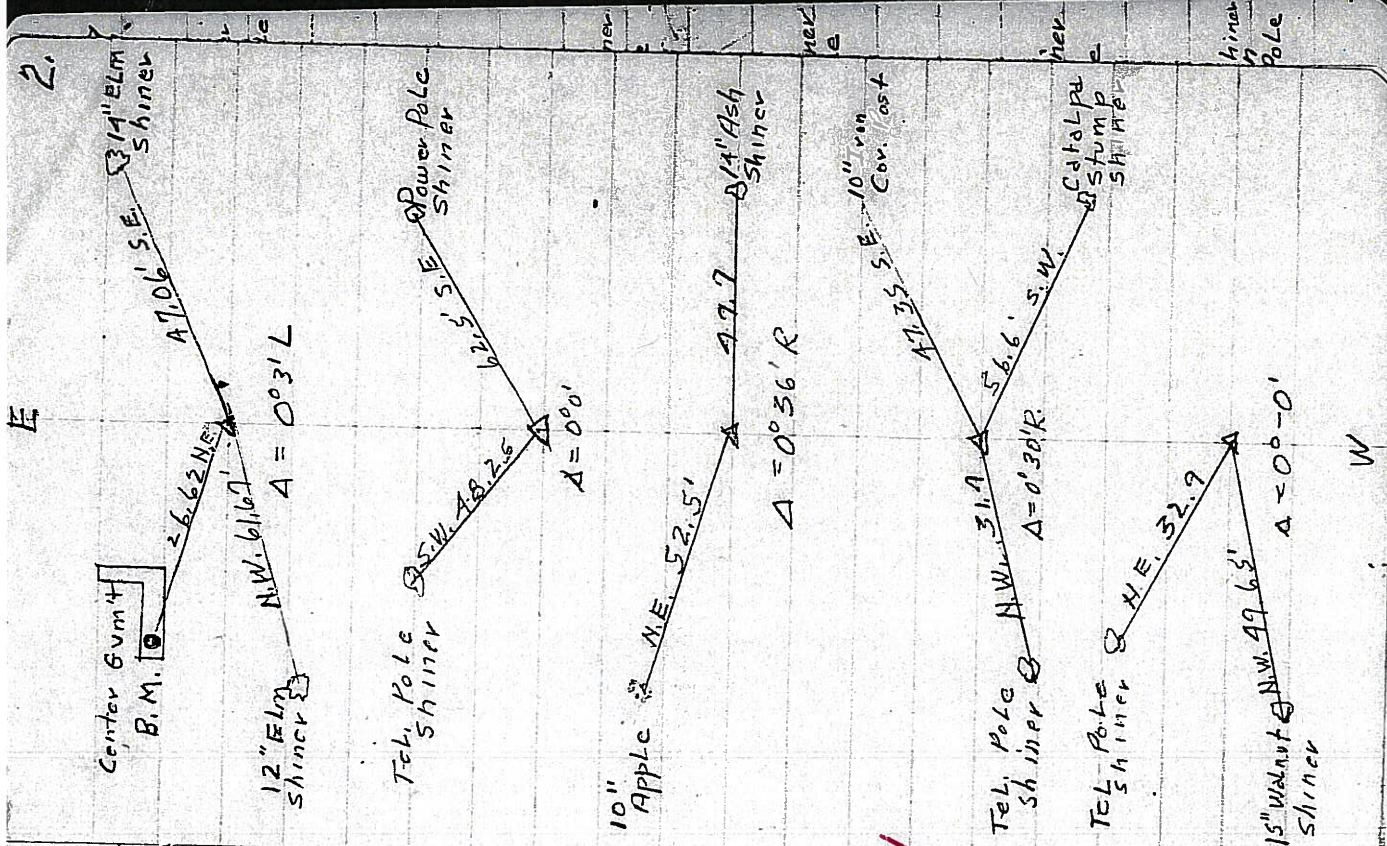
Fd 4-13-04

(10)

278+23.1

Set R.R. Spike on E

Need Help



2.

E

W