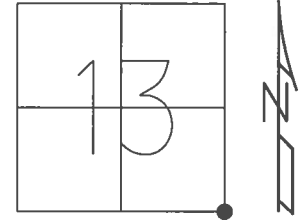


O.D.O.T. DISTRICT 2 SURVEY OFFICE (USE ONLY)

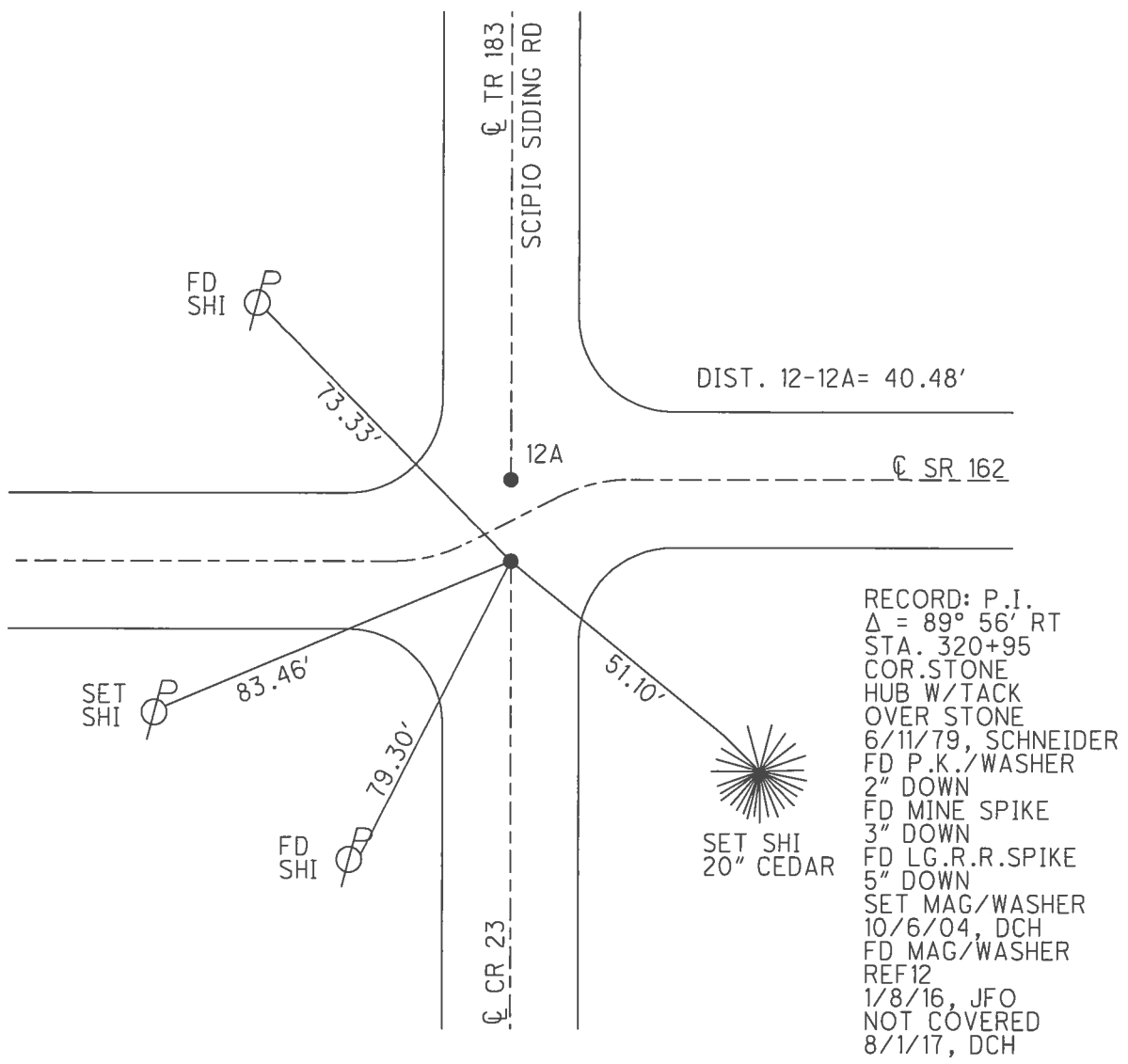
PERSONNEL _____ REFERENCE NO. 12 SHEET 13 OF 32

NOTES RHOADES _____ DATE 8/1/17 _____ ROUTE SR 162
 H.C. HOMAN _____ WEATHER SUNNY _____ COUNTY SENECA
 R.C. CARSON _____ TEMP. 77° _____ TOWNSHIP SCIPIO
 POORE _____ SECTION 13
 T 2 N R 16 E

TYPE MONUMENT MAG/WASHER
~~ON SURFACE~~ - BELOW ON
~~LEFT~~ - ☉ PAV'T - RIGHT 36.5'
- TO - EDGE PAVEMENT
 S.L.M. 163+95



GRID: NORTHING: 531521.143 EASTING: 1842480.855

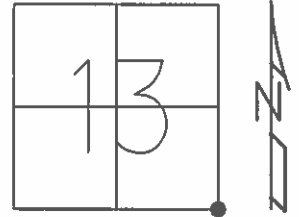


RECORD: P.I.
 $\Delta = 89^\circ 56' RT$
 STA. 320+95
 COR.STONE
 HUB W/TACK
 OVER STONE
 6/11/79, SCHNEIDER
 FD P.K./WASHER
 2" DOWN
 FD MINE SPIKE
 3" DOWN
 FD LG.R.R.SPIKE
 5" DOWN
 SET MAG/WASHER
 10/6/04, DCH
 FD MAG/WASHER
 REF12
 1/8/16, JFO
 NOT COVERED
 8/1/17, DCH

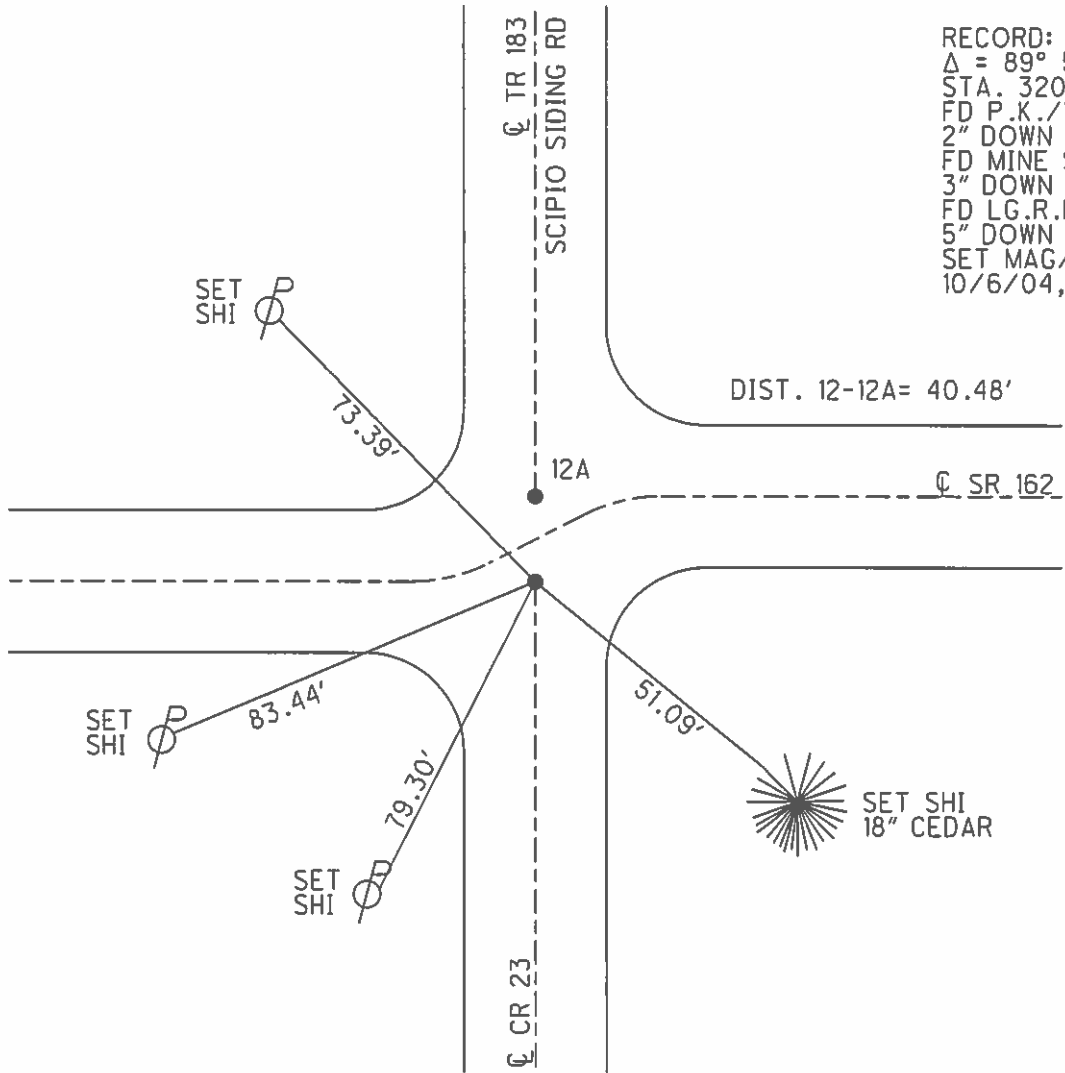
O.D.O.T. DISTRICT 2 SURVEY OFFICE (USE ONLY)

PERSONNEL _____ REFERENCE NO. 12 SHEET 13 OF 32
 NOTES HOMAN _____ DATE 4/2/04 ROUTE SR 162
 H.C. NUHFER _____ WEATHER CLOUDY COUNTY SENECA
 R.C. HOOKER _____ TEMP. 60° TOWNSHIP SCIPIO
 ARMS _____ SECTION 13
 HUSS _____ T 2 N R 16 E

TYPE MONUMENT _____ P.K./WASHER _____
~~ON SURFACE~~ - BELOW 2"
 LEFT - Q PAV'T - RIGHT ON
- TO - EDGE PAVEMENT
 S.L. M63+95



GRID: NORTHING: _____ EASTING: _____



RECORD: P.I.
 $\Delta = 89^\circ 56' RT$
 STA. 320+95
 FD P.K./WASHER
 2" DOWN
 FD MINE SPIKE
 3" DOWN
 FD LG.R.R. SPIKE
 5" DOWN
 SET MAG/WASHER
 10/6/04, DCH

O.D.O.T. DISTRICT 2 SURVEY OFFICE

PERSONNEL

REFERENCE NO. 12

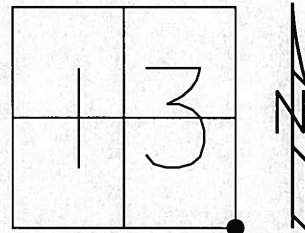
SHEET 12 OF 30

NOTES HOMAN
 H.C. NUHFER
 R.C. HOOKER
ARMS
HUSS

DATE 4-2-04
 WEATHER CLOUDY
 TEMP. 60°

ROUTE SR 162
 COUNTY SENECA
 TOWNSHIP SCIPPIO
 SECTION 13
T 2 N R 16 E

TYPE MONUMENT SEE BELOW
 ON SURFACE - BELOW SEE BELOW
 LEFT - Q PAV'T - RIGHT
 TO EDGE PAVEMENT
 S.L.M. 163+95

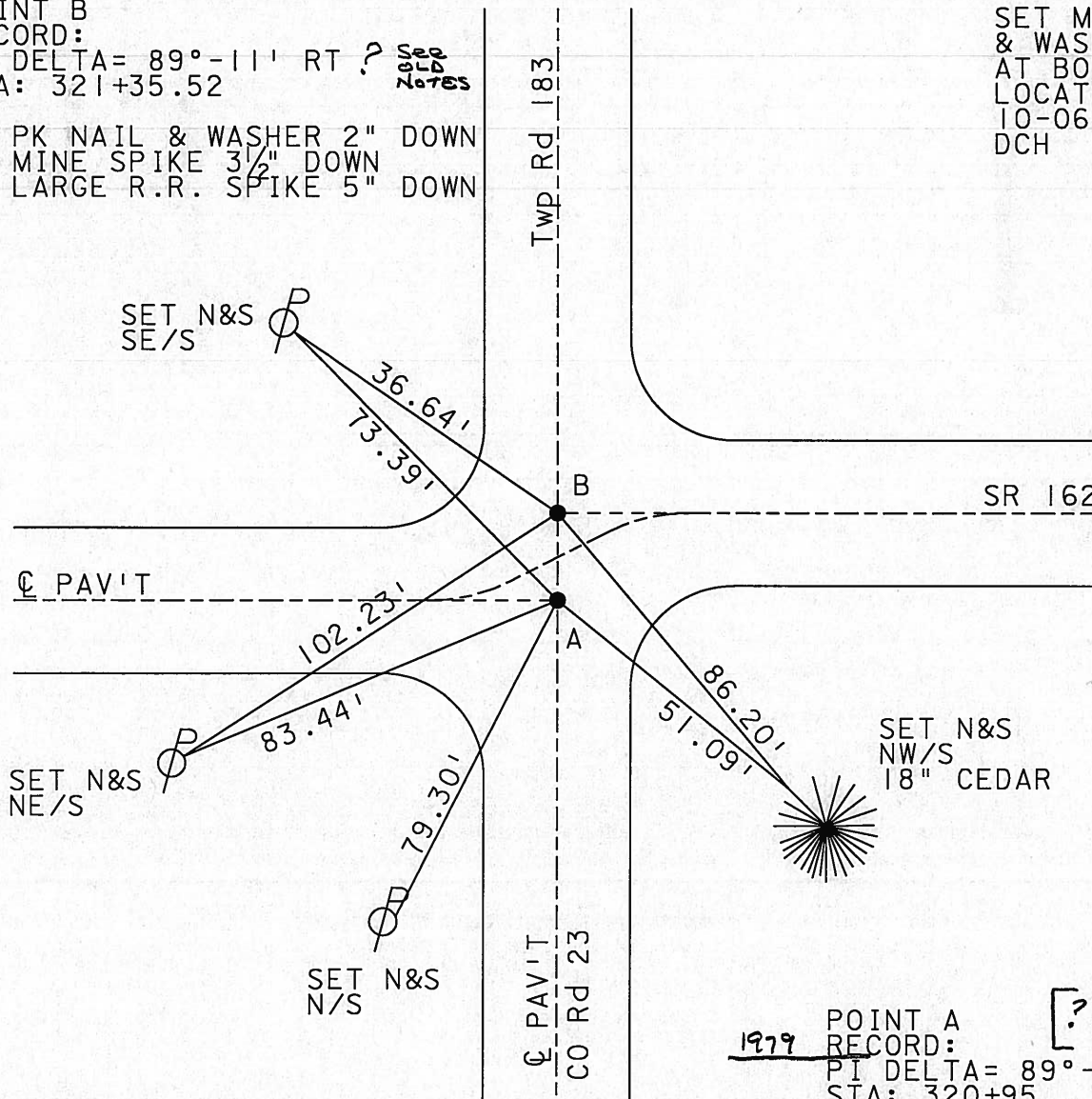


1979

POINT B
 RECORD:
 PI DELTA = 89° - 11' RT ? *See old Notes*
 STA: 321+35.52
 FD PK NAIL & WASHER 2" DOWN
 FD MINE SPIKE 3 1/2" DOWN
 FD LARGE R.R. SPIKE 5" DOWN

SET MAG NAIL
 & WASHER
 AT BOTH
 LOCATIONS
 10-06-04
 DCH

2004



Q PAV'T

SR 162

Twp Rd 183

Q PAV'T
 CO Rd 23

SET N&S
 NE/S

SET N&S
 NW/S
 18" CEDAR

SET N&S
 N/S

1979 POINT A *[? See old Notes]*
 RECORD:
 PI DELTA = 89° - 56' RT
 STA: 320+95
 2004 FD MINE SPIKE 3" DOWN

DISTANCE A-B = 40.48'

O.D.O.T. DISTRICT 2 SURVEY OFFICE

PERSONNEL _____

REFERENCE NO. _____

SHEET _____ OF _____

NOTES RIPPLE

H.C. BARBOUR

DATE 2/05/91

ROUTE S.R.#162

R.C. HOFFMAN

WEATHER Cloudy

COUNTY Seneca

BARNHISEL

TEMP. 34°

TOWNSHIP Scipio

Loehrke

SECTION 13 & 24

T. R. N. R. 16 E

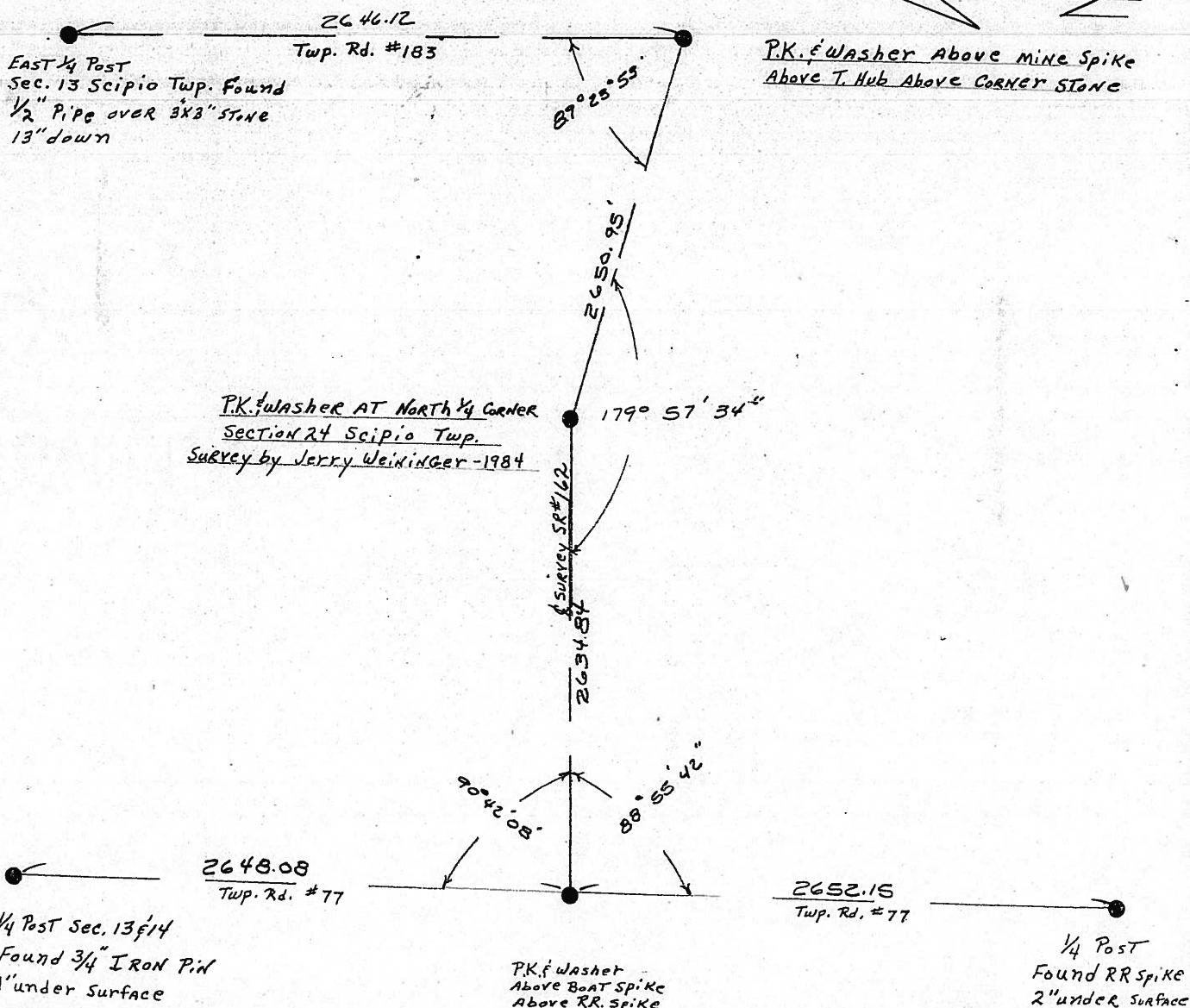
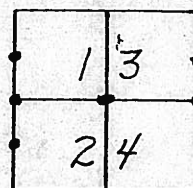
TYPE MONUMENT Alignment

ON SURFACE - BELOW _____

LEFT- & PAV'T. - RIGHT _____

TO _____ EDGE PAVEMENT

S.L.M. 2.79



County Seneca S.R. 162

Date 6-11-79

Township Sciprio & Reed

Weather Fair

Section 18 & 19

Temp. 65°

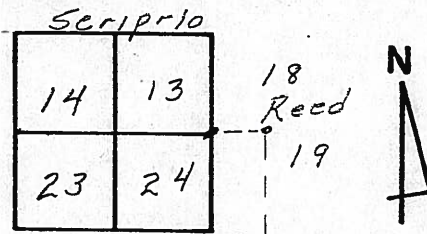
T₂N, R₁₆E

Personnel Schneider

Masser

Barbour

Sta. 163+95



4-2-04
Cloudy



12
60°

- Homan Notes
Nuffer HC
Hooker RC
Arms Flag
Huss Flag

Fd PK Nail & Washer 2" Down
Fd Mine Spike 3 1/2" Down
Fd Lg RR Spike 5" Down

S.R. # 162

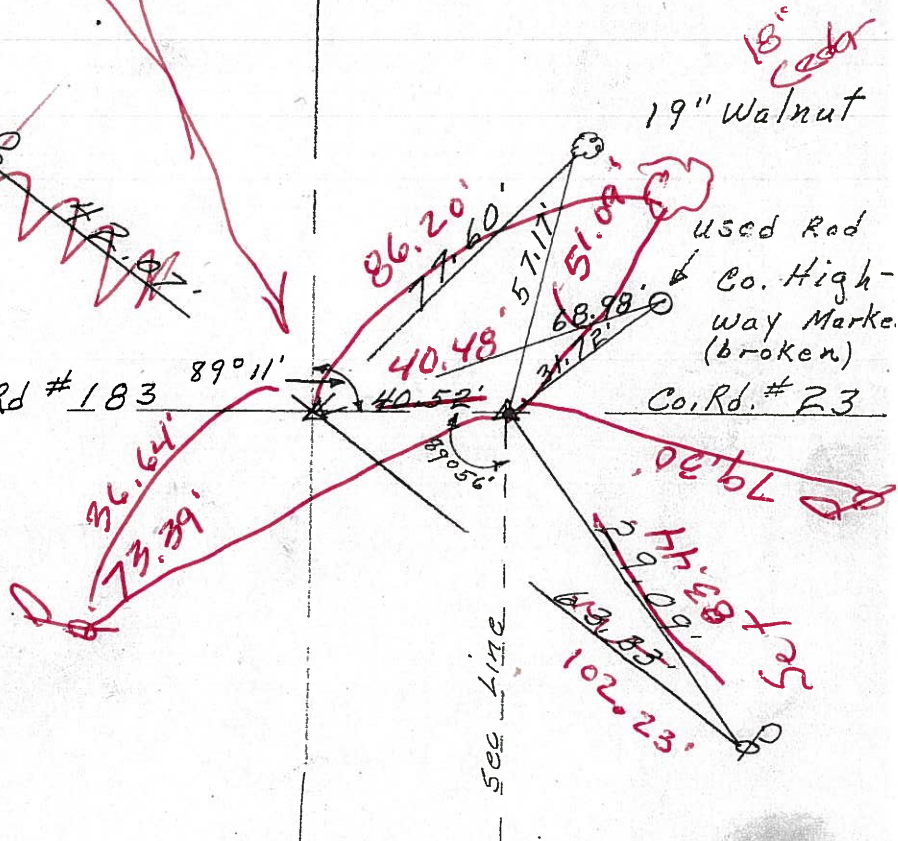
321+35.52

R.R. spk (bent)

Mine spk. (used)

Reset Mag Nail & Washer
10-06-04
DCH

Twp. Rd # 183



3-25-04

Fd Mine Spike

Homan HC Notes 3" Down

Arms RC

Cloudy

65°

320+95

cor. stone; Hub with tack over stone

small R.R. spk. 1" down

O.D.O.T. DISTRICT 2 SURVEY OFFICE

PERSONNEL _____

REFERENCE NO. 12

SHEET 12 OF 30

NOTES Ripple

H.C. DARBOUR

R.C. GUYMAN

DATE 10-23-90

WEATHER Sunny Windy

TEMP. 50°

ROUTE 162

COUNTY Sen

TOWNSHIP Scipio

SECTION 24

T 2 N R 16 E

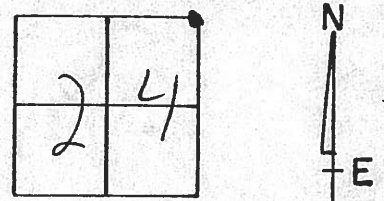
TYPE MONUMENT PK & Washer

ON SURFACE - BELOW _____

LEFT- & PAV'T. - RIGHT _____

TO _____ EDGE PAVEMENT

S.L.M. _____

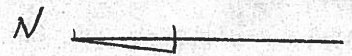


PI Δ 89° 11' RT.

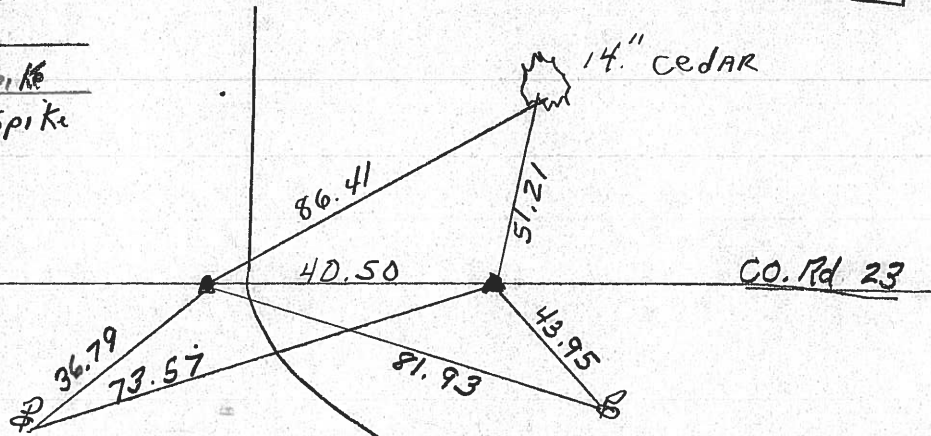
STA. 321+35.52

PK above bent Spike

Above Bent RR Spike



Temp Rd 183



PI Δ 89° 06' LT.

STA. 320+95

PK Above Min Spike

Above T. Hub Above Cor

STAKE

SR 162

O.D.O.T. DISTRICT 2 SURVEY OFFICE

PERSONNEL

REFERENCE NO. 12

SHEET 3 OF 3

NOTES Hoffman

H.C. LOCHRS

DATE 6-20-90

ROUTE SR 162

R.C. BARNHISEL

WEATHER OVERCAST

COUNTY SENeca

TEMP. 70°

TOWNSHIP Scipio

SECTION 24

T2 N R 16 E

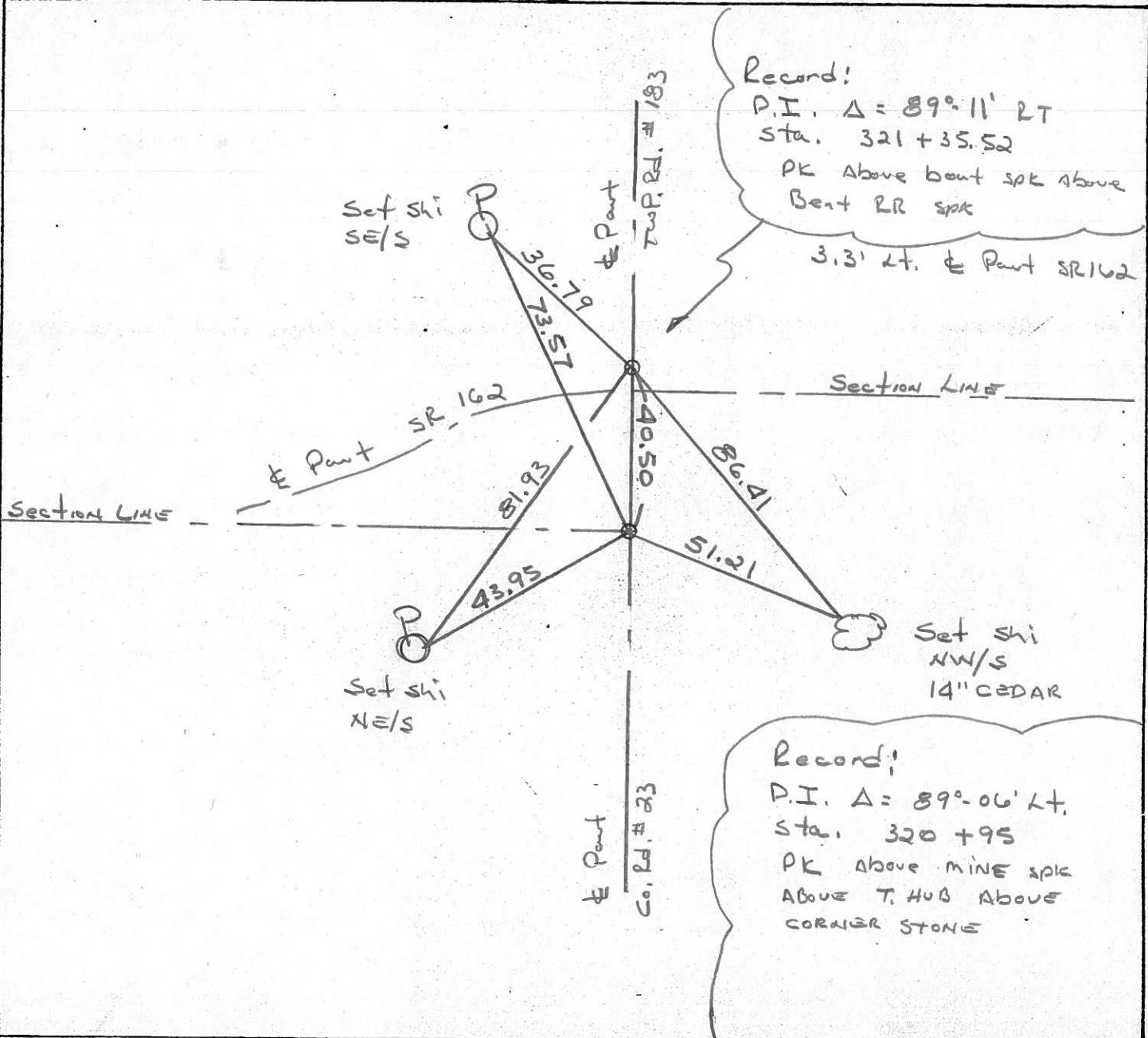
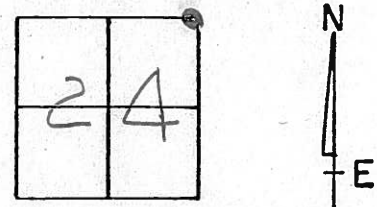
TYPE MONUMENT P.K. / WASHER

ON SURFACE - BELOW YES

LEFT- & PAV'T. - RIGHT

TO EDGE PAVEMENT

S.L.M.



County Seneca S.R. # 162

Date 1/03/84

Township Scipio & Reed

Weather overcast

Section 13 & 24 - 18 & 19

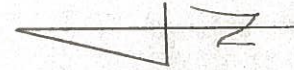
Temp. 32°

T2N, R16E

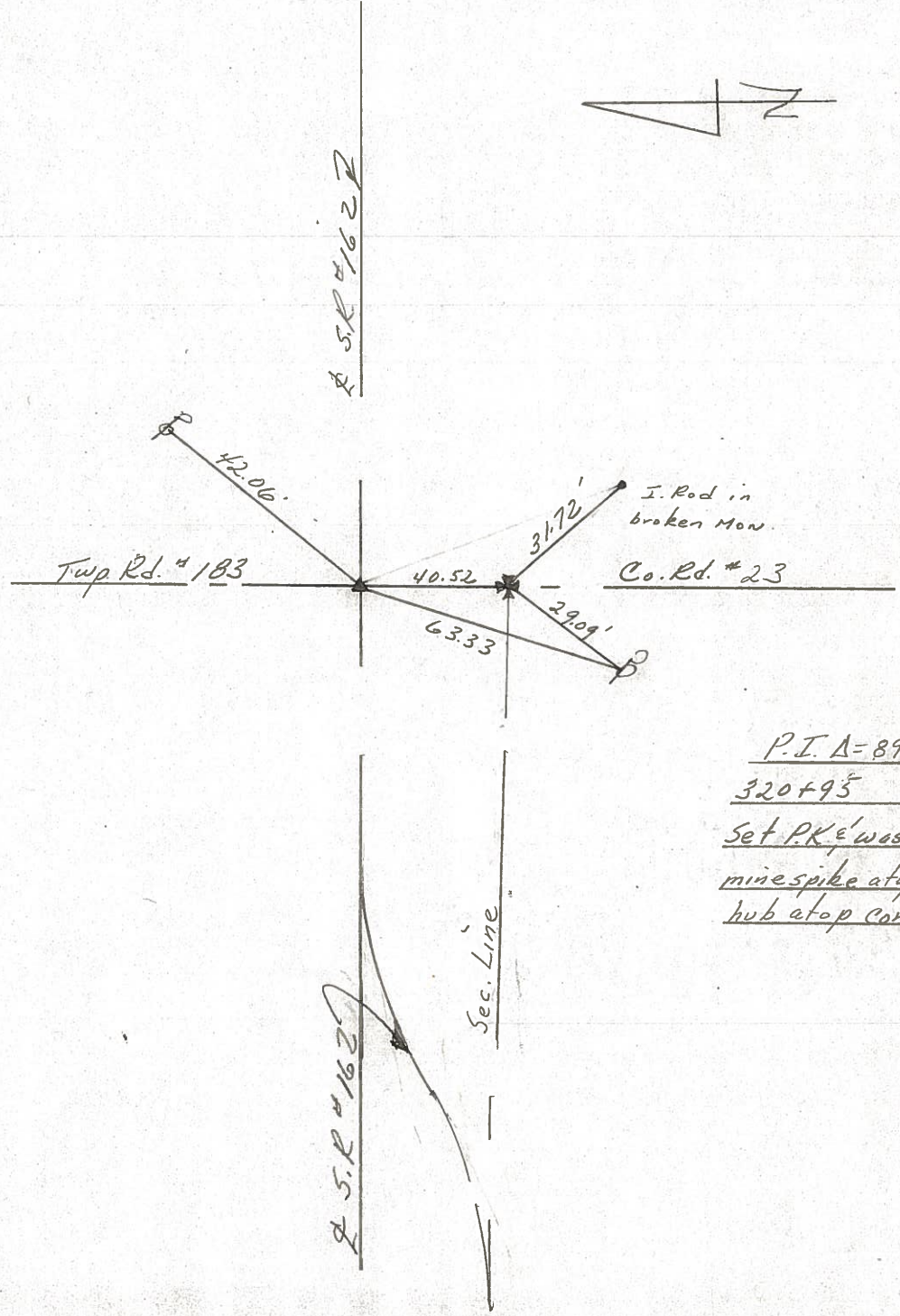
Personnel Cronin
Ripple
Geyman
Barbour

#12

13	18
24	19



P.I. Δ = 89° 11' Rt.
321 + 35.52
Set P.K. & washer atop boat
spike atop bent R.R. spike
3.5 Lt. & Paint.



P.I. Δ = 89° 06' Lt.
320 + 95
Set P.K. & washer atop
mine spike atop tacked
hub atop corner stone

County Seneca S.R. 162

Date 6-11-79

Township Sciprio & Reed

Weather Fair

Section 18 & 19

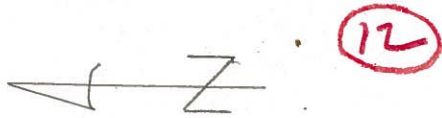
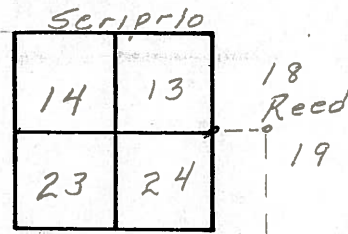
Temp. 65°

T₂N, R₁₆E

Personnel Schneider

Mosser

Barbour



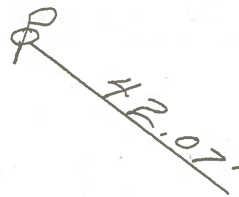
321+35.52

R.R. spk (bent)

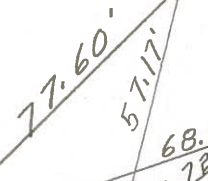
Mine spk. (used)

Twp. Rd # 183

S.R. # 162



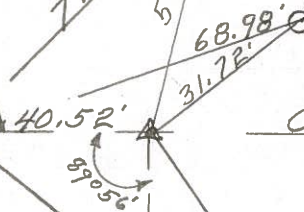
89°11'



19" Walnut

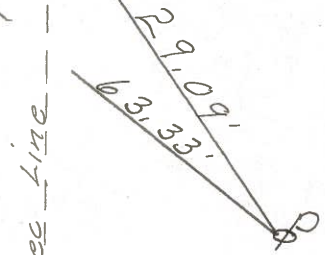
used Rod
Co. Highway Marke
(broken)

Co. Rd. # 23



31.72'

89°56'



sec line

320+95

Cor. stone; Hub with
tack over stone
small R.R. spk. 1" low
surface

S.H. 499 Sec M.

(11)

294 + 43.3

R.R. Spike on E
Did Not Find
4-14-04

(7)

ok

(12)

320 + 75

Con. Stone. Hub with Takeover
stone

(10)

Fd - 3-25-04

(12-A)

321 + 35.3

(11)

Fd 4-20-05

(13)

330 + 99.5

R.R. Spike on E
Fd 4-20-04

(12)

