

O.D.O.T. DISTRICT 2 SURVEY OFFICE (USE ONLY)

PERSONNEL _____ REFERENCE NO. 12 A SHEET 14 OF 32

NOTES RHOADES _____ DATE 8/1/17 _____ ROUTE SR 162
 H.C. HOMAN _____ WEATHER SUNNY _____ COUNTY SENECA
 R.C. CARSON _____ TEMP. 77° _____ TOWNSHIP SCIPIO
 POORE _____ SECTION 13
 T 2 N R 16 E

TYPE MONUMENT MAG/WASHER

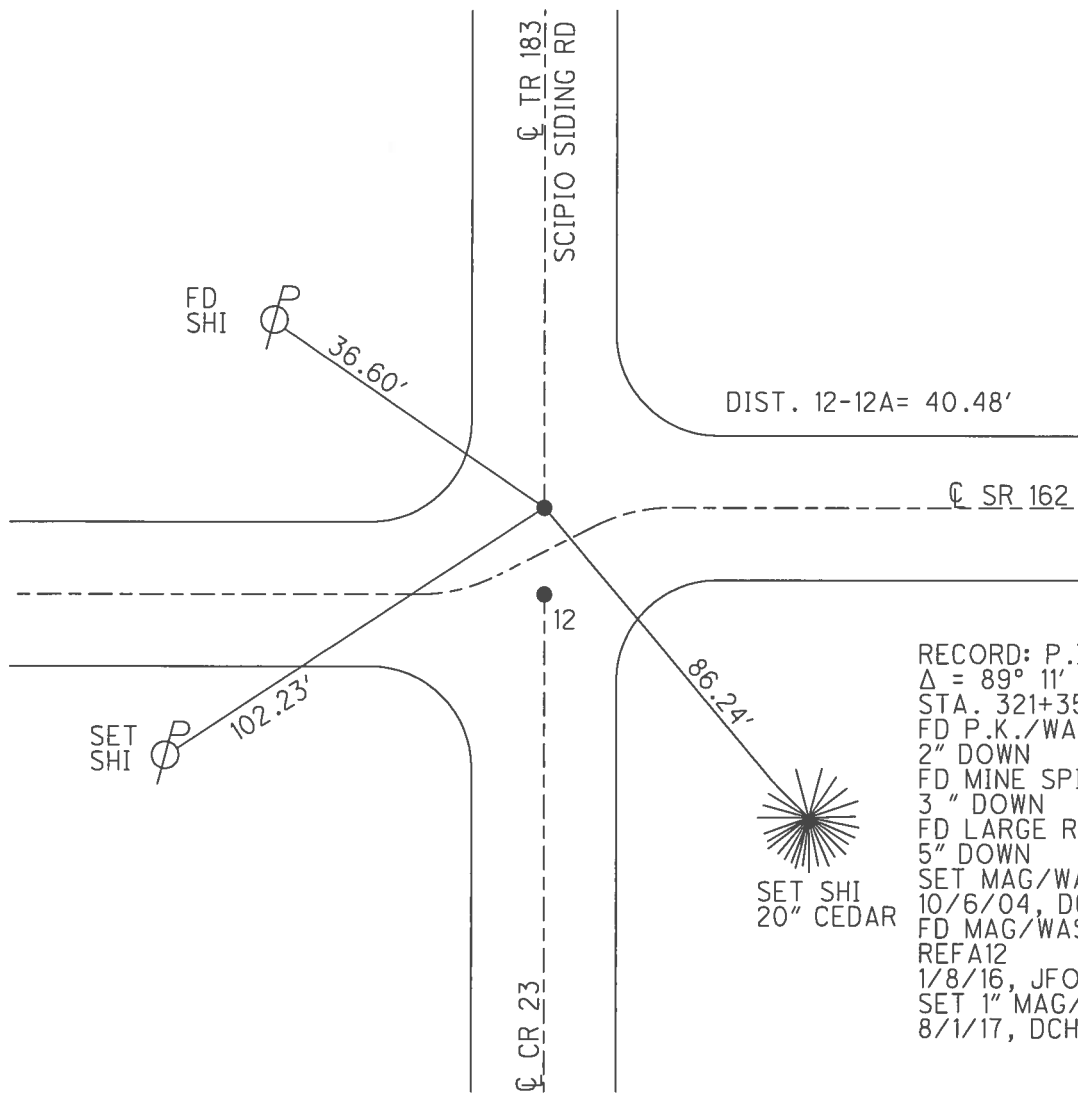
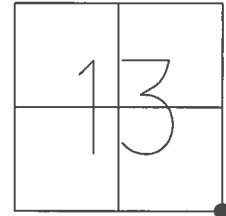
~~ON SURFACE~~ - BELOW ON

LEFT - ☉ PAV'T - ~~RIGHT~~ 4.5'

TO - EDGE PAVEMENT

S.L.M. 163+95

GRID: NORTHING: 531561.597 EASTING: 1842481.421



RECORD: P.I.
 $\Delta = 89^\circ 11' RT$
 STA. 321+35.52
 FD P.K./WASHER
 2" DOWN
 FD MINE SPIKE
 3" DOWN
 FD LARGE R.R.SPIKE
 5" DOWN
 SET MAG/WASHER
 10/6/04, DCH
 FD MAG/WASHER
 REFA12
 1/8/16, JFO
 SET 1" MAG/WASHER
 8/1/17, DCH

O.D.O.T. DISTRICT 2 SURVEY OFFICE (USE ONLY)

PERSONNEL	REFERENCE NO.	<u>12 A</u>	SHEET	<u>14</u>	OF	<u>32</u>
NOTES	HOMAN	DATE	<u>4/2/04</u>	ROUTE	<u>SR 162</u>	
H.C.	NUHFER	WEATHER	<u>CLOUDY</u>	COUNTY	<u>SENECA</u>	
R.C.	HOOKER	TEMP.	<u>60°</u>	TOWNSHIP	<u>SCIPIO</u>	
	ARMS			SECTION	<u>13</u>	
	HUSS			T. <u>2</u> N	R. <u>16</u> E	

TYPE MONUMENT P.K./WASHER

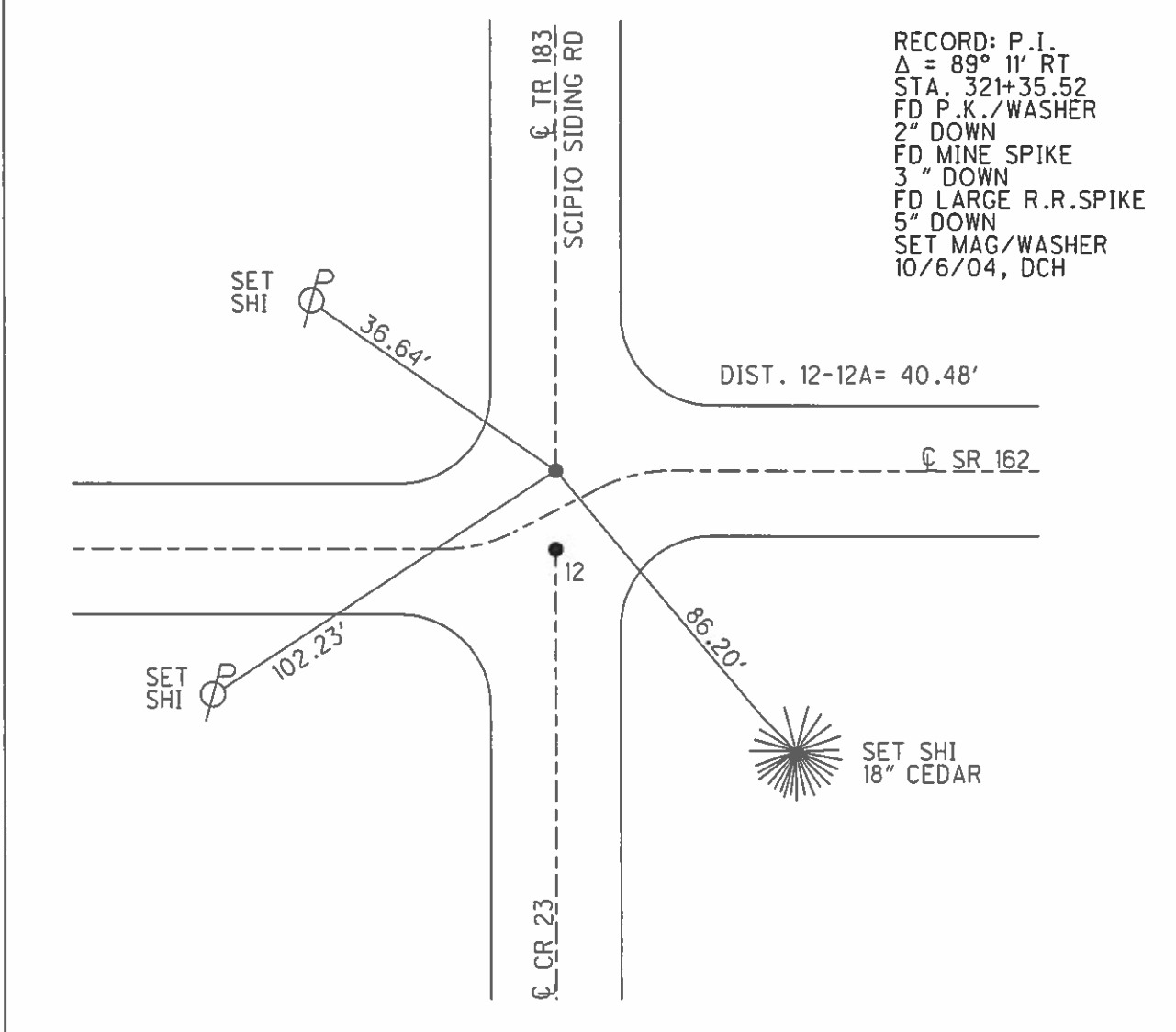
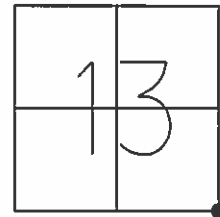
~~ON SURFACE~~ - BELOW 2"

LEFT - ☉ PAV'T - RIGHT ON

- TO - EDGE PAVEMENT

S.L.M. 163+95

GRID: NORTHING: _____ EASTING: _____



O.D.O.T. DISTRICT 2 SURVEY OFFICE

PERSONNEL

REFERENCE NO. 12

SHEET 12 OF 30

NOTES HOMAN

DATE 4-2-04

ROUTE SR 162

H.C. NUHFER

WEATHER CLOUDY

COUNTY SENECA

R.C. HOOKER

TEMP. 60°

TOWNSHIP SCIPPIO

ARMS

SECTION 13

HUSS

T 2 N R 16 E

TYPE MONUMENT _____ SEE BELOW

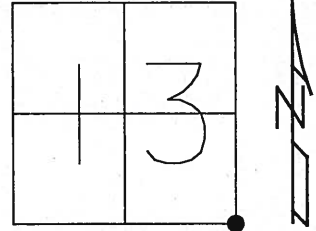
ON SURFACE - BELOW _____ SEE BELOW

LEFT - ☉ PAV'T - RIGHT _____

_____ TO _____ EDGE PAVEMENT

S.L.M. _____ 163+95

(12-A)



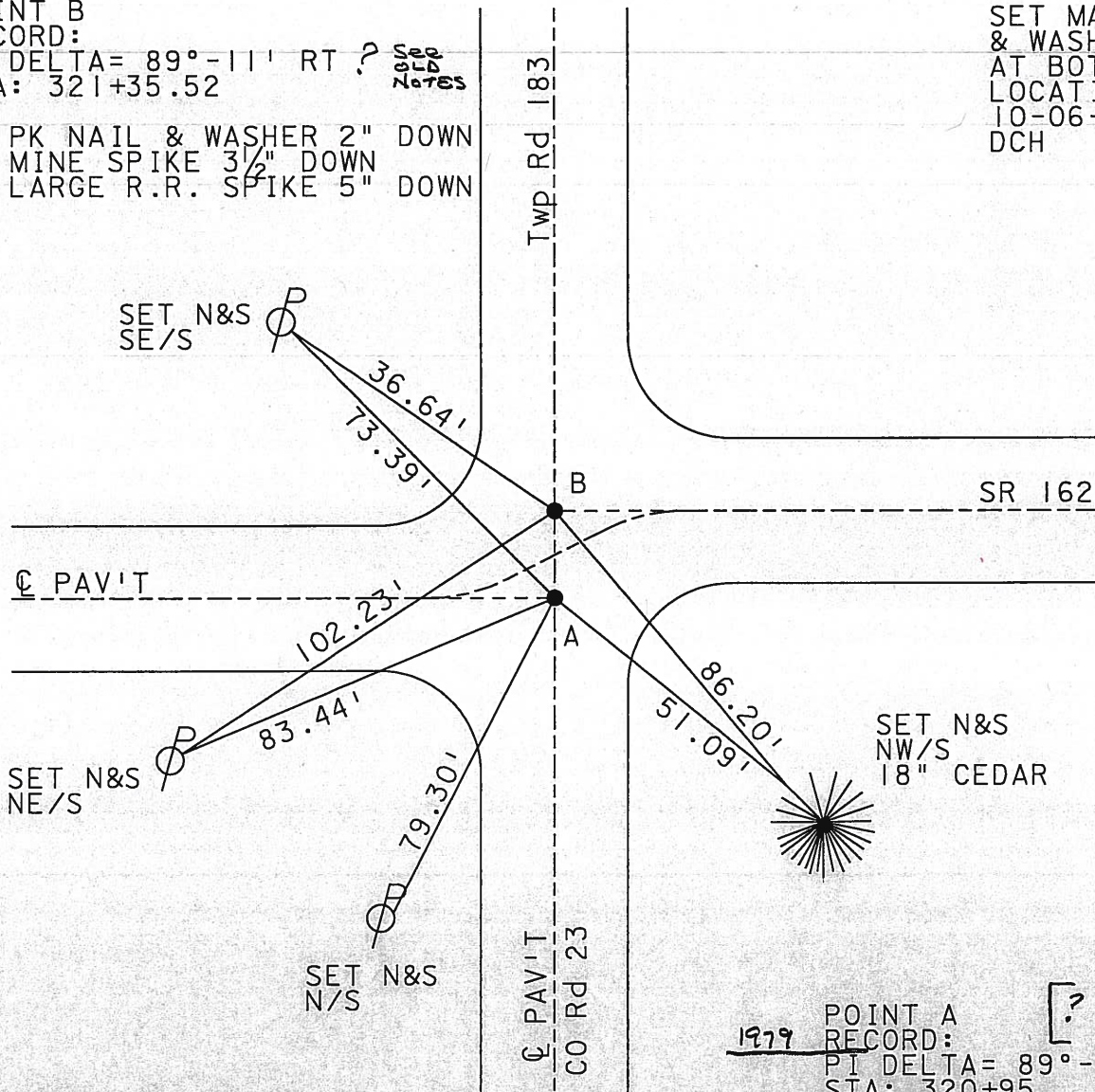
1979

POINT B
RECORD:
PI DELTA = 89° - 11' RT ? *See old Notes*
STA: 321+35.52

SET MAG NAIL
& WASHER
AT BOTH
LOCATIONS
10-06-04
DCH

2004

FD PK NAIL & WASHER 2" DOWN
FD MINE SPIKE 3 1/2" DOWN
FD LARGE R.R. SPIKE 5" DOWN



DISTANCE A-B = 40.48'

1979 POINT A
RECORD: *? See old Notes*
PI DELTA = 89° - 56' RT
STA: 320+95
2004 FD MINE SPIKE 3" DOWN

County Seneca S.R. 162

Date 6-11-79

Township Scripio & Reed

Weather Fair

Section 18 & 19

Temp. 65°

T₂N, R₁₆E

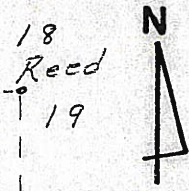
Personnel Schneider

Masser

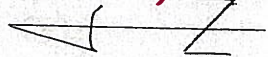
Barbour

Sta. 163+95

Scripio	
14	13
23	24



4-2-04
Cloudy



12-A
60°

- Homan Notes
Nuhfer HC
Hooker RC
Arms Flag
Huss Flag

Fd PK Nail & washer 2" Down
Fd Mine Spike 3 1/2" Down
Fd Lg RR Spike 5" Down

S.R. # 162

18" Cedar
19" Walnut

321+35.52

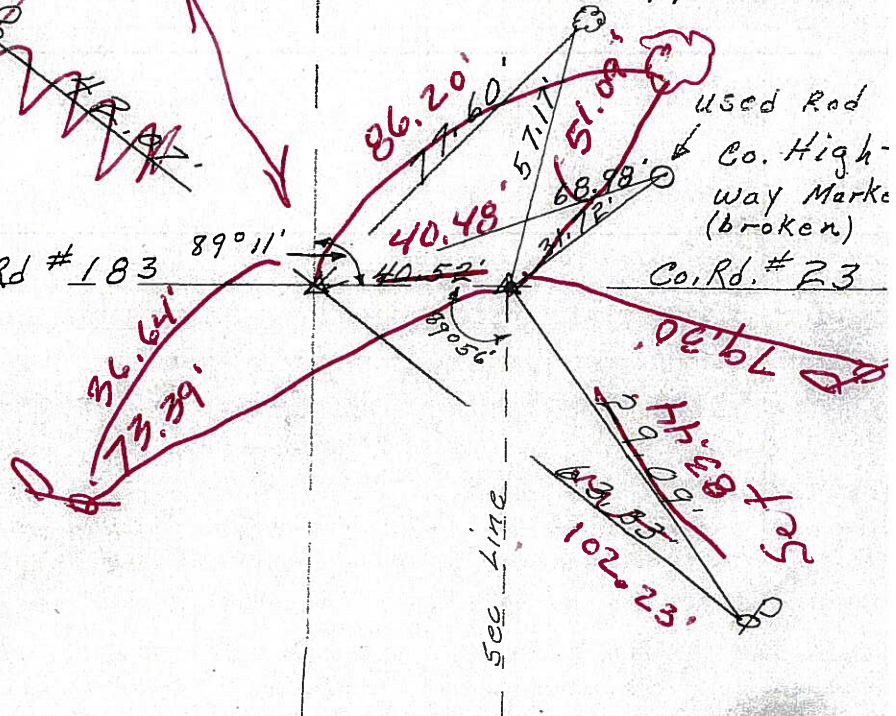
R.R. spk (bent)

Mine spk. (used)

Reset Mag Nail & washer
10-06-04
DGH

Twp. Rd # 183

89° 11'



used Rod
Co. Highway Marke
(broken)
Co. Rd. # 23

35 x 8 1/2
102.23'

3-25-04

Fd Mine Spike

Homan HC Notes 3" Down

Arms RC

Cloudy

65°

320+95

cor. stone; Hub with
tack over stone
small R.R. spk. 1" down

O.D.O.T. DISTRICT 2 SURVEY OFFICE

PERSONNEL _____

REFERENCE NO. 12

SHEET 12 OF 30

NOTES Ripple

H.C. DARBOUR

R.C. GeyMAN

DATE 10-23-90

WEATHER Sunny Windy

TEMP. 50°

ROUTE 162

COUNTY Sen

TOWNSHIP Scipio

SECTION 24

T2 N R 16 E

TYPE MONUMENT PK & Washer

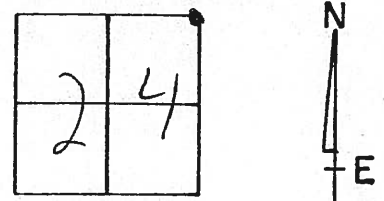
ON SURFACE - BELOW _____

LEFT- & PAV'T. - RIGHT _____

____ TO _____ EDGE PAVEMENT

S.L.M. _____

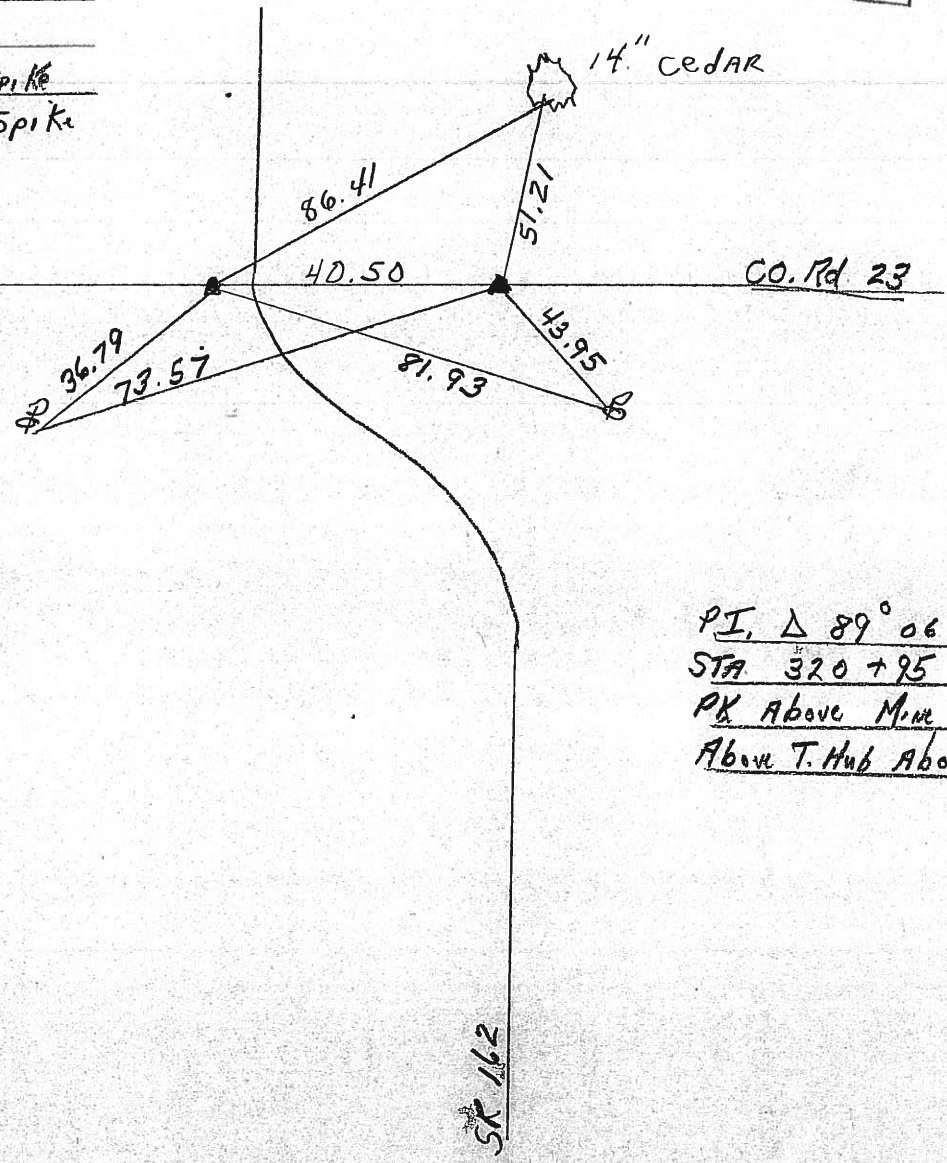
12-A



PI Δ 89° 11' RT.
STA. 321+35.52
PK above bent Spike
Above Bent RR Spike



Top Rd 183



PI Δ 89° 06' LT.
STA 320+95
PK Above Min Spt
Above T. Hub Above COR
STAKE

SR 162

O.D.O.T. DISTRICT 2 SURVEY OFFICE

PERSONNEL

REFERENCE NO. 12

SHEET 3 OF 3

NOTES Hoffman

H.C. Loehrkis

DATE 6-20-90

ROUTE SR 162

R.C. BARNHISEL

WEATHER overcast

COUNTY Seneca

TEMP. 70°

TOWNSHIP SciPIO

SECTION 24

T. 2 N R. 16 E

TYPE MONUMENT P.K. / WASHER

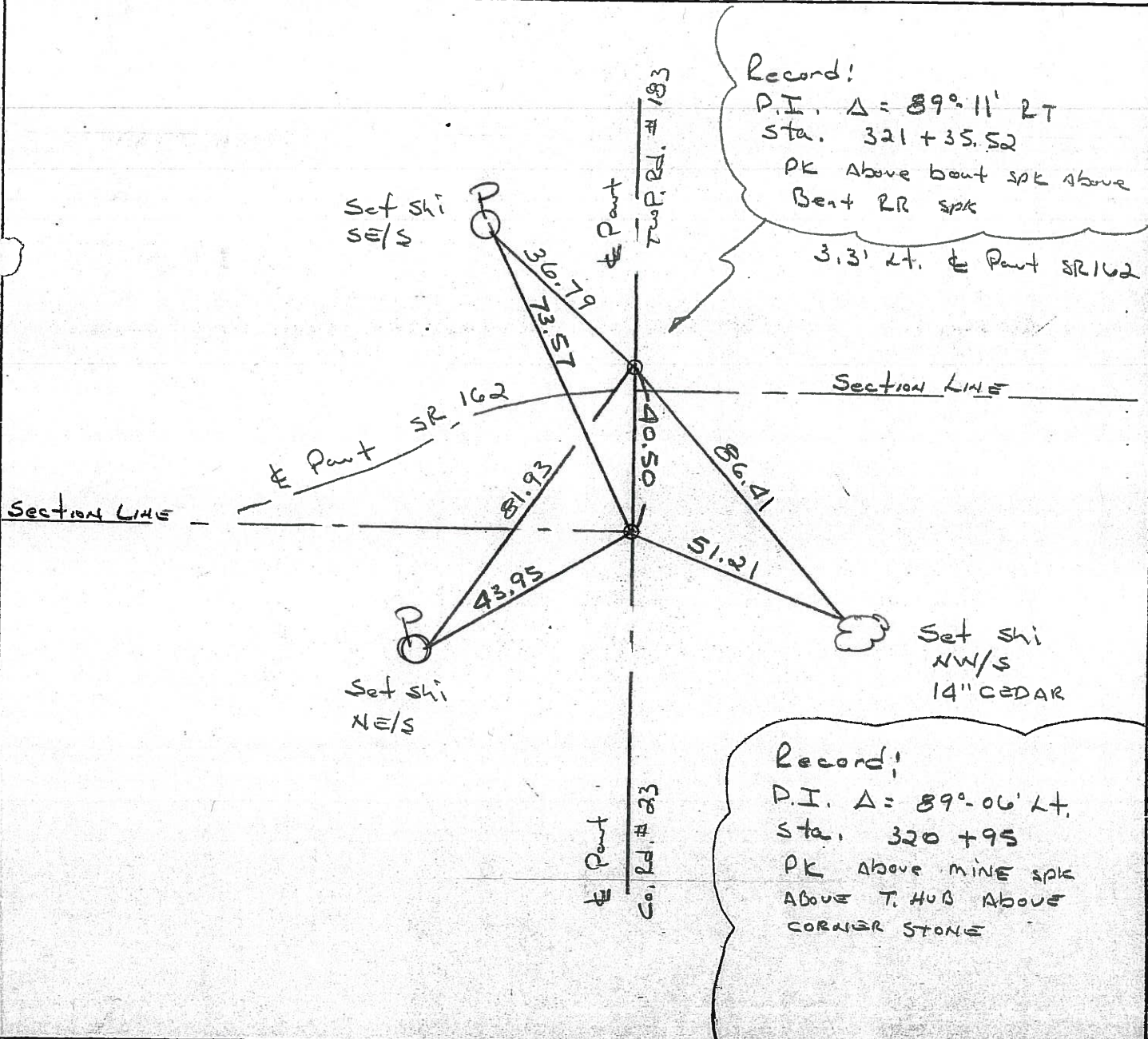
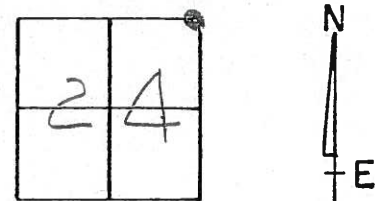
~~ON-SURFACE~~ - BELOW YES

LEFT - ☉ PAV'T. - RIGHT

TO EDGE PAVEMENT

S.L.M. _____

12-A



County Seneca S.R. # 162

Date 1/03/84

Township Scipio & Reed

Weather overcast

Section 13 & 24 - 18 & 19

Temp. 32°

T2N, R16E

Personnel Cromin

13	18
24	19



#12-A

Ripple

Geyman

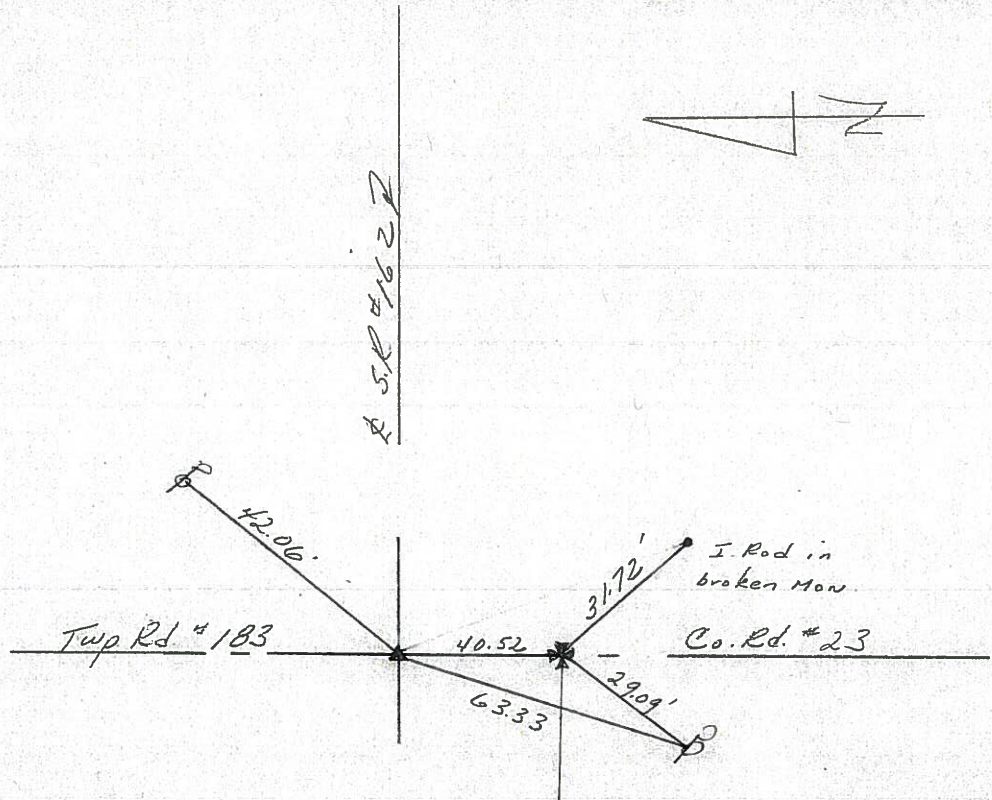
Barbour

P.I. Δ = 89° 11' Rt.

321 + 35.52

set P.K. & washer atop boat spike atop bent R.R. spike

3.5' Lt. & Permit.



S.R. #162

S.R. #162

Sec. Line

P.I. Δ = 89° 06' Lt.

320 + 95

Set P.K. & washer atop mine spike atop tacked hub atop cornerstone

OD.O.T. DISTRICT 2 SURVEY OFFICE

Sht. 12 of 30

County Seneca S.R. 162

Township Sciprio & Reed

Section 18 & 19

T₂N, R₁₆E

Personnel Schneider

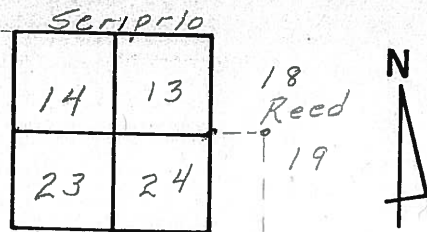
Masser

Barbour

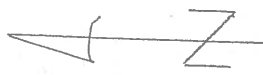
Date 6-11-79

Weather Fair

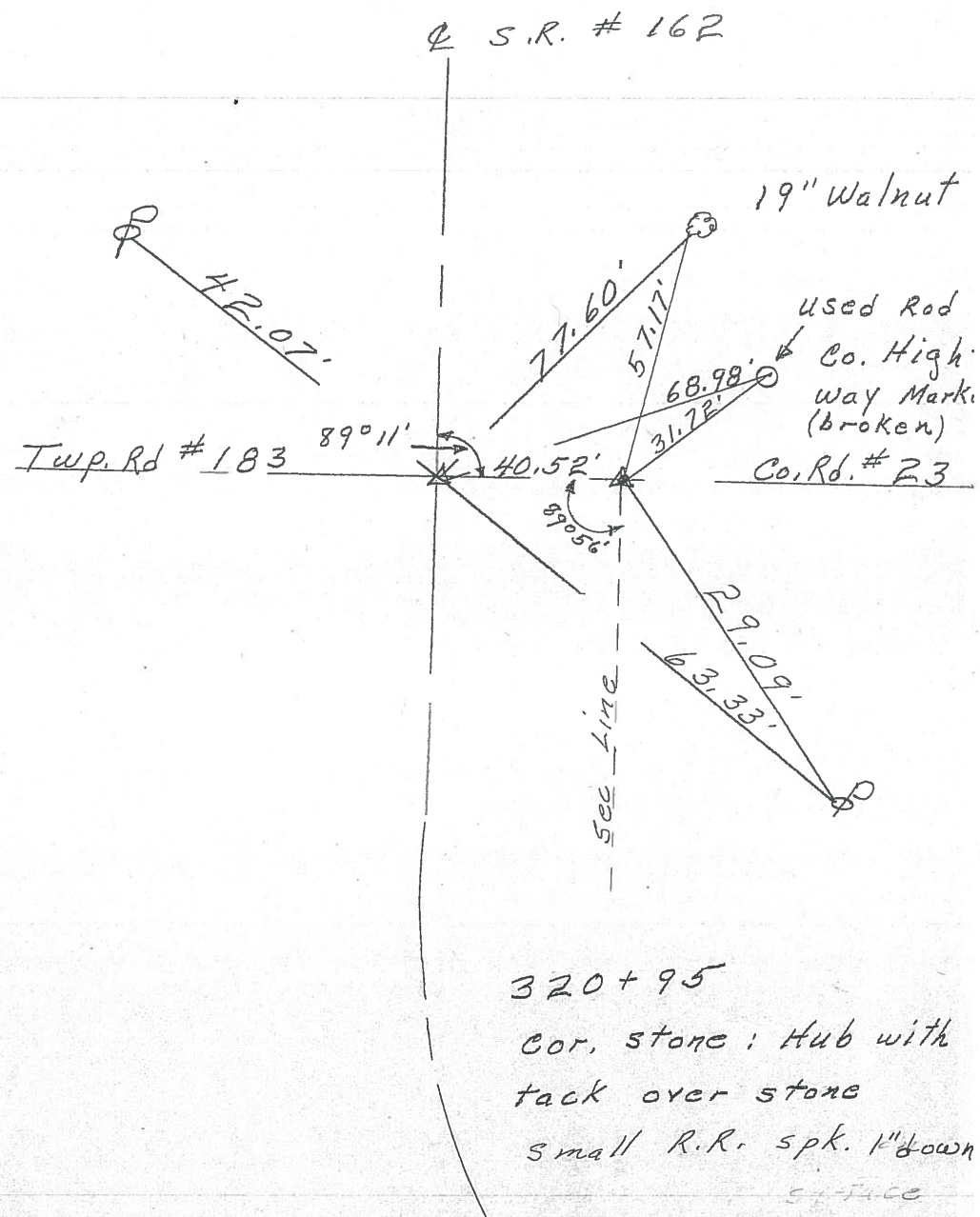
Temp. 65°



12-A



321+35.52
R.R. spk (bent)
Mine spk. (used)



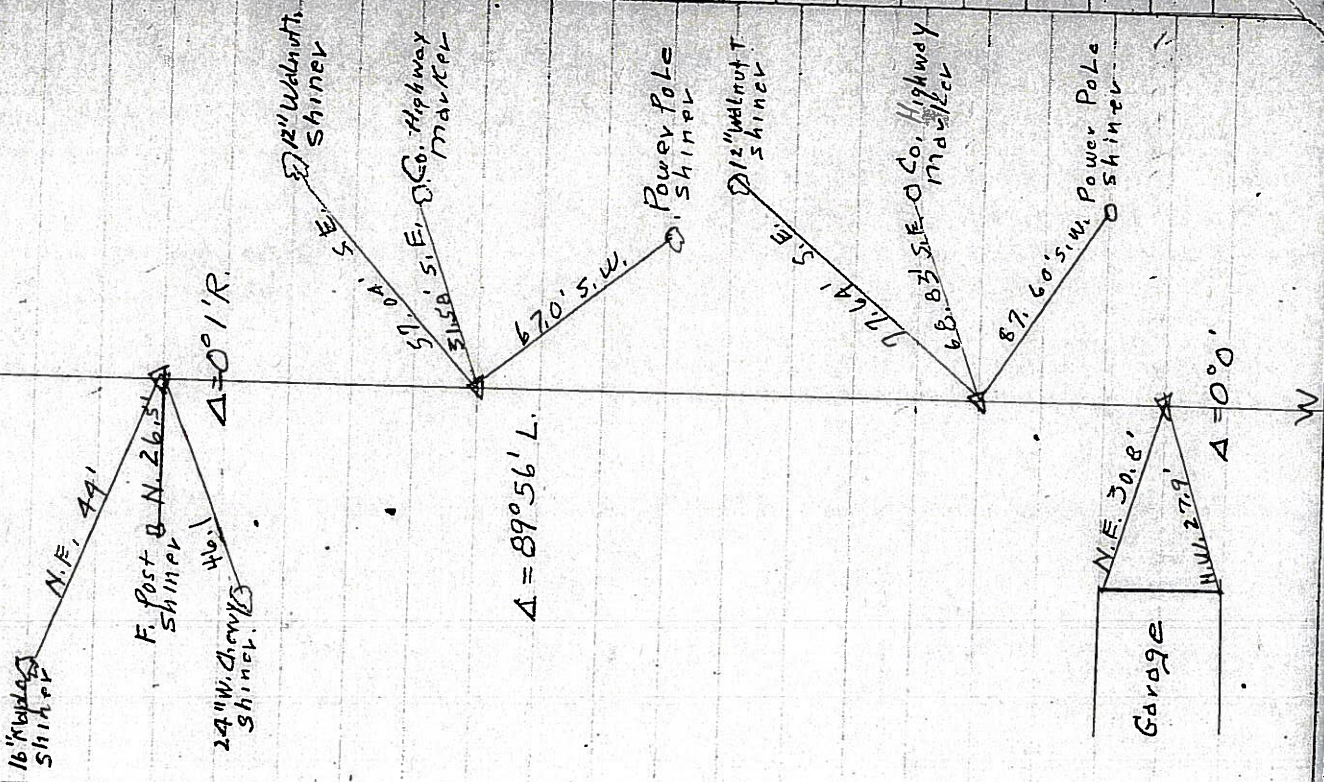
S. H. 499 Sec M.

(11)

294 + 43.3

R.R. Spike on E
D. d Not Find
4-14-04

(7)



(12)

320 + 95

Cor. Stanz. Hub with Takeover
stone

FD - 3-25-04

(11)

321 + 35.3

FD 4-20-05

(12-A)

(13)

330 + 99.5

R.R. Spike on E
FD 4-20-04

(12)