

O.D.O.T. DISTRICT 2 SURVEY OFFICE (USE ONLY)

PERSONNEL \_\_\_\_\_ REFERENCE NO. 13 SHEET 15 OF 32

NOTES RHOADES \_\_\_\_\_ DATE 8/1/17 \_\_\_\_\_ ROUTE SR 162  
 H.C. HOMAN \_\_\_\_\_ WEATHER SUNNY \_\_\_\_\_ COUNTY SENECA  
 R.C. CARSON \_\_\_\_\_ TEMP. 77° \_\_\_\_\_ TOWNSHIP REED  
 POORE \_\_\_\_\_ SECTION 18  
 T 2 N R 17 E

TYPE MONUMENT MAG/WASHER

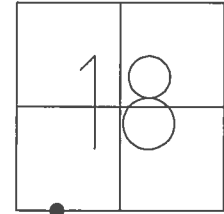
ON SURFACE - ~~BELOW~~ ON \_\_\_\_\_

LEFT - ☉ PAV'T - ~~RIGHT~~ 1.5'

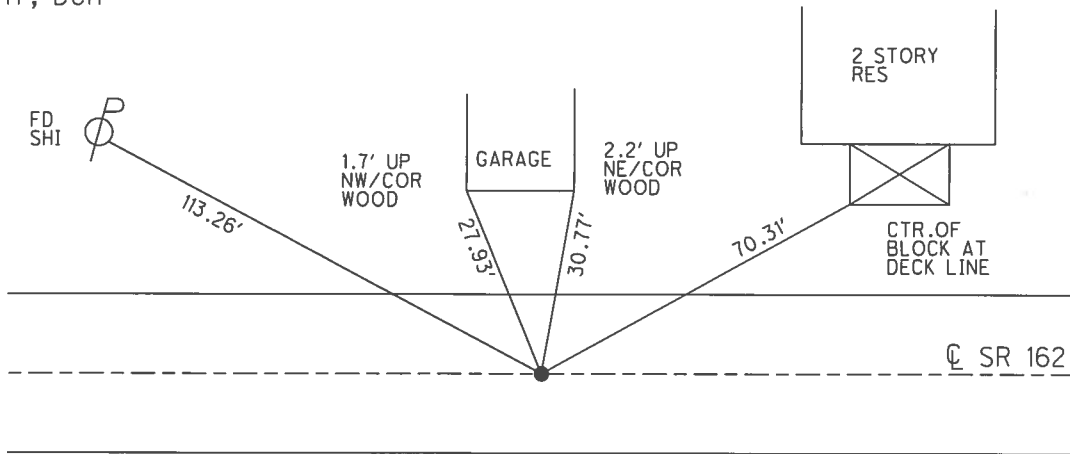
\_\_\_\_\_ TO \_\_\_\_\_ EDGE PAVEMENT

S.L.M. 173+55

GRID: NORTHING: 531557.915 EASTING: 1843441.216



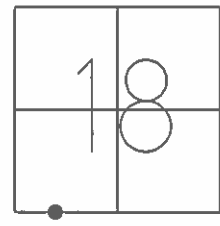
RECORD: P.O.T.  
 FD P.K./WASHER  
 1" DOWN  
 FD MINE SPIKE  
 2" DOWN  
 FD LG R.R. SPIKE  
 4" DOWN  
 SET MAG/WASHER  
 10/6/04, DCH  
 FD MAG/WASHER  
 REF13  
 1/8/16, JFO  
 SET 1" MAG/WASHER  
 8/1/17, DCH



**O.D.O.T. DISTRICT 2 SURVEY OFFICE (USE ONLY)**

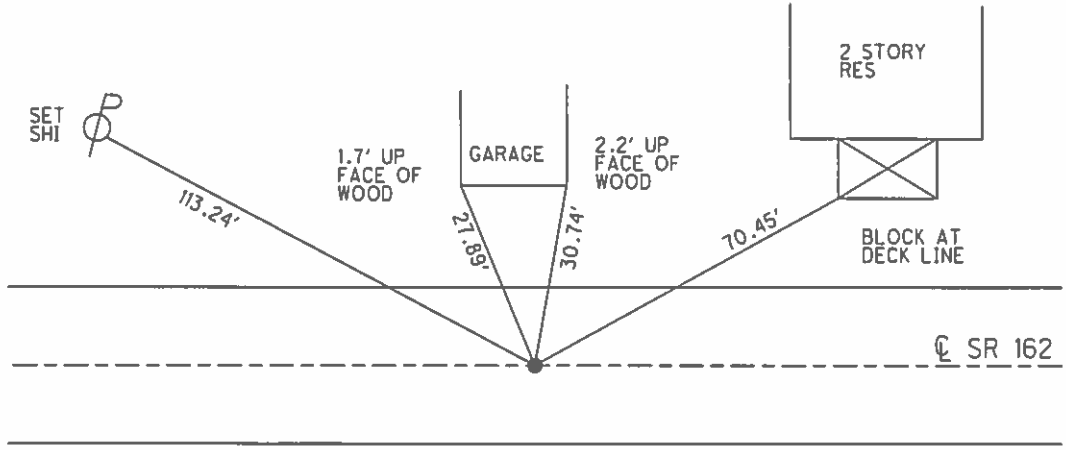
PERSONNEL \_\_\_\_\_ REFERENCE NO. 13 SHEET 15 OF 32  
 NOTES HOMAN \_\_\_\_\_ DATE 4/20/04 ROUTE SR 162  
 H.C. NUHFER \_\_\_\_\_ WEATHER CLOUDY COUNTY SENECA  
 R.C. HOOKER \_\_\_\_\_ TEMP. 60° TOWNSHIP REED  
 ARMS \_\_\_\_\_ SECTION 18  
 HUSS \_\_\_\_\_ T 2 N R 17 E

TYPE MONUMENT P.K./WASHER  
 ON SURFACE - ~~BELOW~~ ON \_\_\_\_\_  
 LEFT - ☉ PAV'T - ~~RIGHT~~ 1'  
 - TO - EDGE PAVEMENT  
 S.L.M. 173+55



GRID: NORTHING: \_\_\_\_\_ EASTING: \_\_\_\_\_

RECORD: P.O.T.  
 FD P.K./WASHER  
 1" DOWN  
 FD MINE SPIKE  
 2" DOWN  
 FD LG R.R. SPIKE  
 4" DOWN  
 SET MAG/WASHER  
 10/6/04, DCH



O.D.O.T. DISTRICT 2 SURVEY OFFICE

PERSONNEL

REFERENCE NO. 13

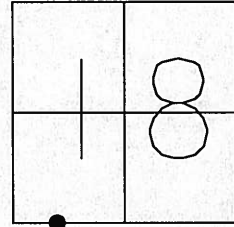
SHEET 13 OF 30

NOTES HOMAN  
 H.C. NUHFER  
 R.C. HOOVER  
ARMS  
HUSS

DATE 4-20-04  
 WEATHER CLOUDY  
 TEMP. 60°

ROUTE SR 162  
 COUNTY SENECA  
 TOWNSHIP REED  
 SECTION 18  
T 2 N R 17 E

TYPE MONUMENT P.K. WASHER  
 ON SURFACE ~~BELOW~~ ON  
 LEFT ~~C PAV'T~~ ~~RIGHT~~ 1.0 LT  
TO EDGE PAVEMENT  
 S.L.M. 173+55

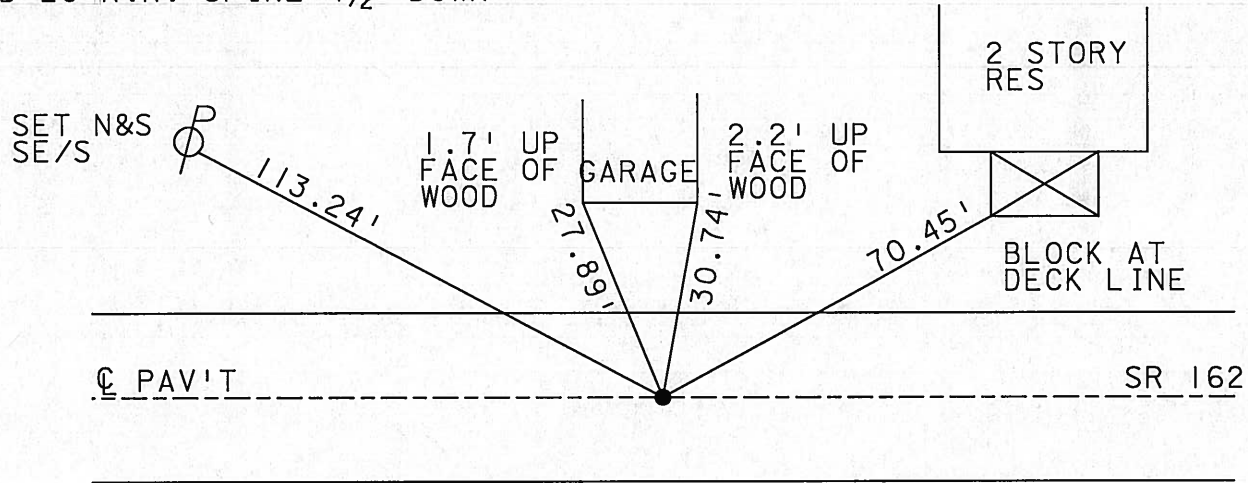


RECORD: POT

SET MAG NAIL  
 & WASHER  
 10-06-04  
 DCH

2004

FD PK & WASHER 1 1/2" DOWN  
 FD MINE SPIKE 2 1/2" DOWN  
 FD LG R.R. SPIKE 4 1/2" DOWN



# O.D.O.T. DISTRICT 2 SURVEY OFFICE

PERSONNEL

REFERENCE NO. 13

SHEET 13 OF 30

NOTES ~~Barbour~~ Homan

4-20-04

H.C. ~~Barbour~~ Nuhfer

DATE 10-23-90

ROUTE 162

R.C. ~~Geyman~~ Hooker

WEATHER Sunny Windy

COUNTY Sen.

Arms  
Huss

TEMP. 56° - 60°

TOWNSHIP Reed

SECTION 18 + 19

T2 N R 16 E

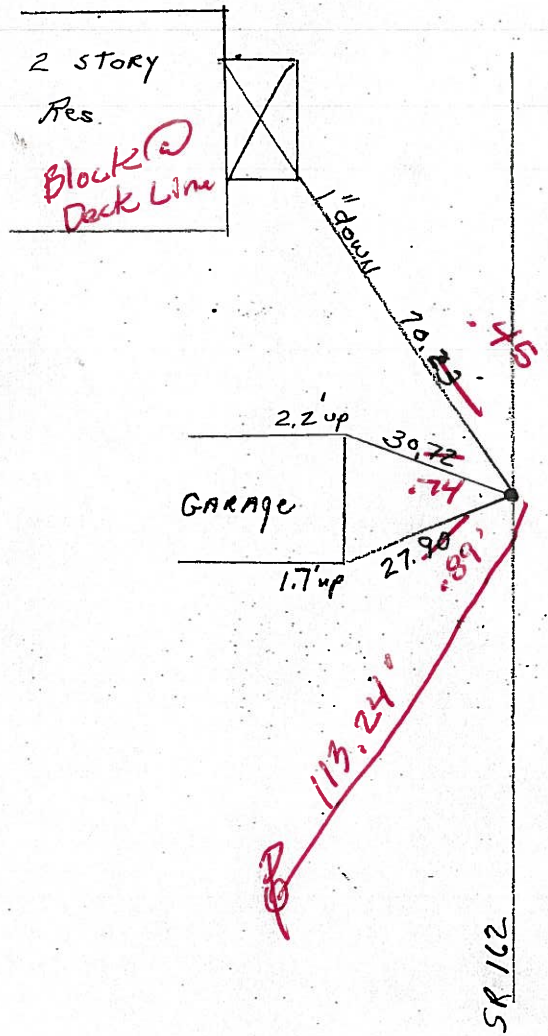
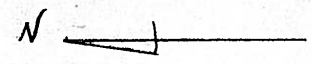
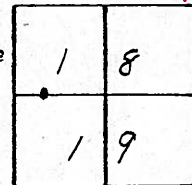
TYPE MONUMENT P.K. + Washer

ON SURFACE - ~~BELOW~~ P.K. Above boat spike atop RR spike

LEFT - 1.5' LT. RIGHT 1.0' LT

TO EDGE PAVEMENT

S.L.M. 330 + 94.50 P.O.T. 173 + 55



*Fd PK & Washer 1 1/2" Down  
Fd Mine spike 2 1/2" Down  
Fd by RR Spike 4 1/2" Down*

*Reset Mag Nail & Washer  
10-06-04  
DCH*

# O.D.O.T. DISTRICT 2 SURVEY OFFICE

PERSONNEL

REFERENCE NO. 13

SHEET 13 OF 30

NOTES Ryppk

H.C. BARBOUR

R.C. GEYMAN

DATE 10-23-90

WEATHER SUNNY Windy

TEMP. 56°

ROUTE 162

COUNTY Sen.

TOWNSHIP Reed

SECTION 18 + 19

T2 N R 16 E

TYPE MONUMENT P.K. + Washer

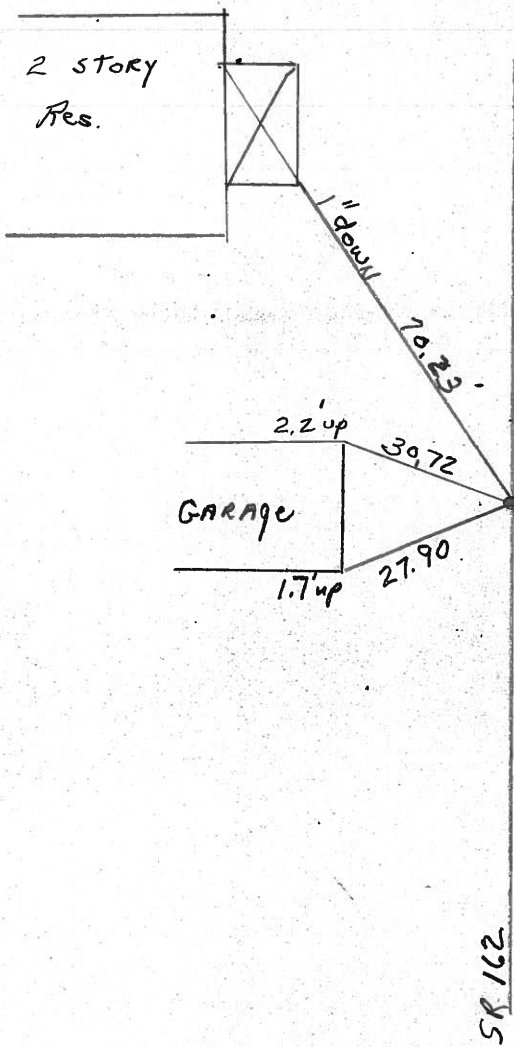
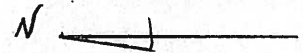
ON SURFACE - BELOW PK Above boat spike at RR spike

LEFT - & PAV'T. - RIGHT 1.5' LT. &

TO EDGE PAVEMENT

S.L.M. 330 + 94.50 P.O.T.

1	8
1	9



SR 162

County Seneca S.R. #162

Date 1/03/84

Township Reed

Weather overcast

Section 18 E 19

Temp. 32°

T2N, R16E

Personnel Cronin

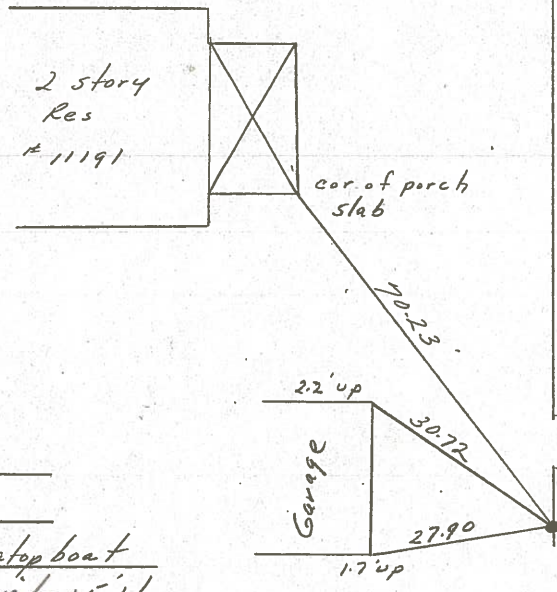
Ripple

Geyman

Barbour

#13

1	8
1	9



P.O.T.

330 + 94.50

Set P.K. & washer atop boat spike atop R.R. spike 1.5' Lt & Point.

R. S.R. #162

County Seneca S.R. 162

Date 6-12-79

Township Reed

Weather Fair

Section 18 & 19

Temp. 20°

T<sub>2</sub>N, R<sub>17</sub>E

Personnel Schneider

Mosser

Barbour

\_\_\_\_\_

\_\_\_\_\_

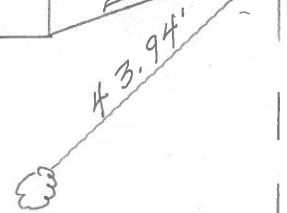
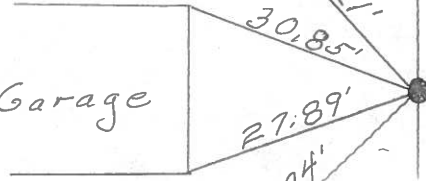
1	8
*	19



(13)

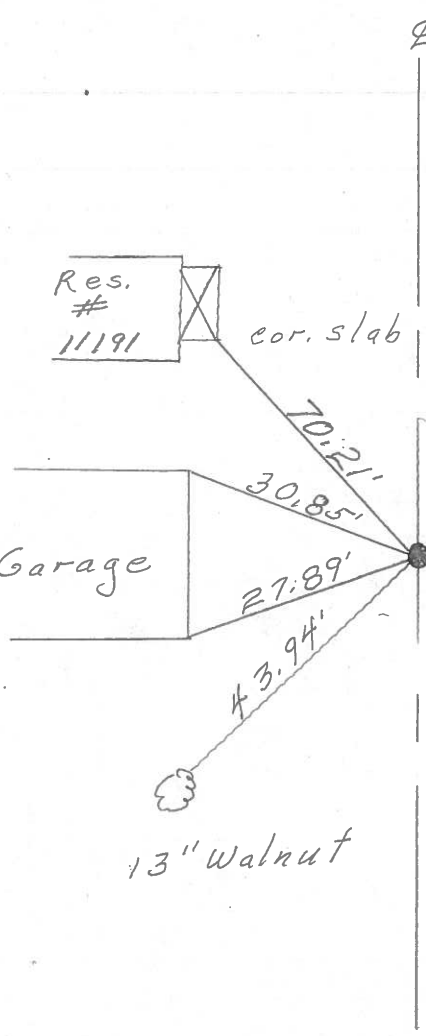


± S.R. # 162



330 + 94.5  
 R.R. spk. on ± R/W  
 Mine spk. on surface  
 1' Lt. of ±

13" Walnut



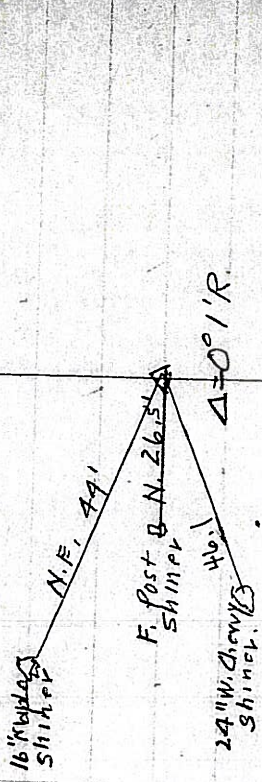
S.H. 499 Sec M.

(11)

294 + 43.3

R.R. Spike on E  
D.d Not Find  
4-14-04

(7)



(12)

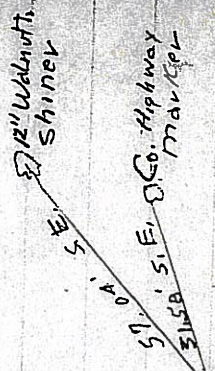
320 + 95

Con. Stanz. Hub with Takeover  
stone

(10)

Fd. 3-25-04

A = 89° 56' L.



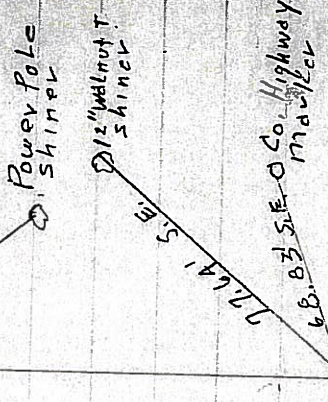
(12-A)

321 + 35.3

Fd 4-20-05

(11)

A = 89° 56' L.



(13)

330 + 99.5

R.R. Spike on E  
Fd 4-20-04

(12)

