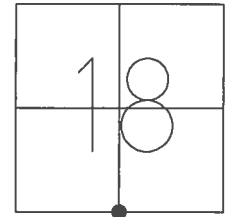


O.D.O.T. DISTRICT 2 SURVEY OFFICE (USE ONLY)

PERSONNEL _____ REFERENCE NO. 14 SHEET 16 OF 32

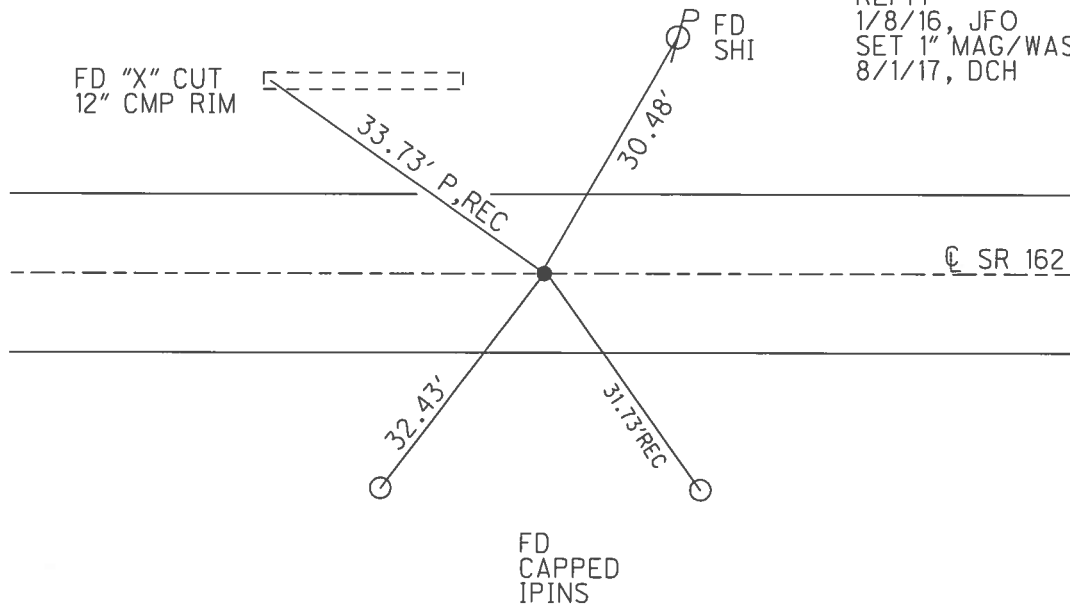
NOTES RHOADES DATE 8/1/17 ROUTE SR 162
 H.C. HOMAN WEATHER SUNNY COUNTY SENECA
 R.C. CARSON TEMP. 77° TOWNSHIP REED
POORE SECTION 18
 T 2 N R 16 E

TYPE MONUMENT MAG/WASHER
 ON SURFACE - ~~BELOW~~ ON _____
 LEFT - ☉ PAV'T - ~~RIGHT~~ 2.5'
 - TO - EDGE PAVEMENT
 S.L.M. 189+98



GRID: NORTHING: 531551.247 EASTING: 1845064.441

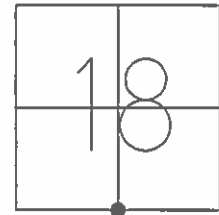
RECORD: P.I.
 $\Delta = 00^\circ 16' RT$
 FD P.K./WASHER
 1" DOWN
 FD MINE SPIKE
 3" DOWN
 FD SM R.R SPIKE
 4" DOWN
 SET MAG/WASHER
 9/7/04, DCH
 FD MAG/WASHER
 REF14
 1/8/16, JFO
 SET 1" MAG/WASHER
 8/1/17, DCH



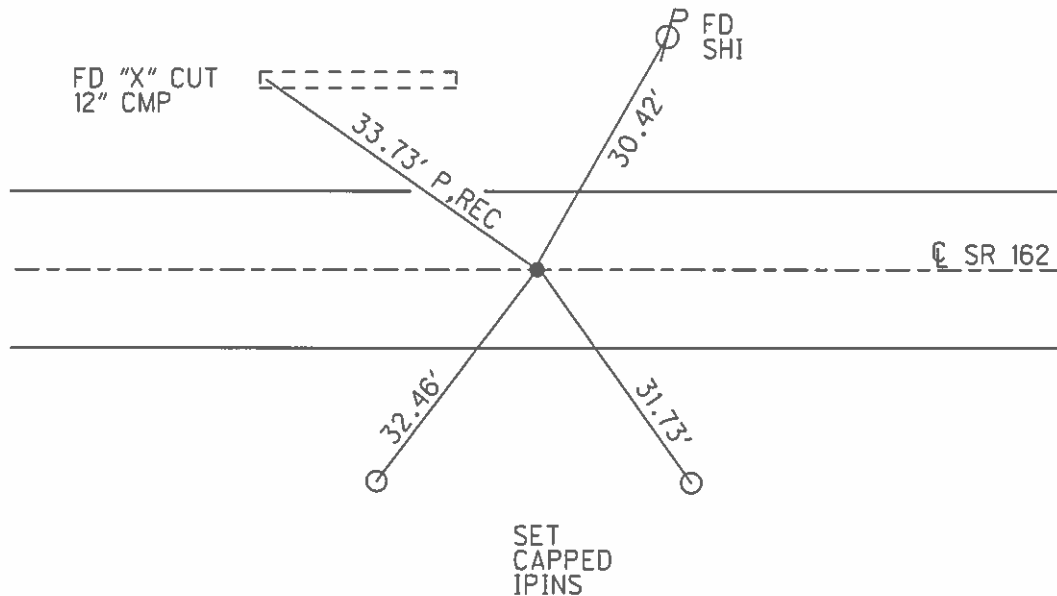
O.D.O.T. DISTRICT 2 SURVEY OFFICE (USE ONLY)

PERSONNEL	REFERENCE NO. <u>14</u>	SHEET <u>16</u> OF <u>32</u>
NOTES <u>HOMAN</u>	DATE <u>4/21/04</u>	ROUTE <u>SR 162</u>
H.C. <u>HOMAN</u>	WEATHER <u>CLOUDY</u>	COUNTY <u>SENECA</u>
R.C. <u>NUHFER</u>	TEMP. <u>60°</u>	TOWNSHIP <u>REED</u>
<u>HOOKER</u>		SECTION <u>18</u>
<u>ARMS, HUSS</u>		T <u>2</u> N R <u>16</u> E

TYPE MONUMENT MAG NAIL
ON SURFACE - ~~BELOW~~ ON
LEFT - ℄ PAV'T - ~~RIGHT~~ 1.5'
TO EDGE PAVEMENT
S.L.M. 189+98
GRID: NORTHING: _____ **EASTING:** _____



RECORD: P.I.
 $\Delta = 00^\circ 16' \text{ RT}$
 FD P.K./WASHER
 1" DOWN
 FD MINE SPIKE
 3" DOWN
 FD SM R.R SPIKE
 4" DOWN
 SET MAG/WASHER
 9/7/04, DCH



O.D.O.T. DISTRICT 2 SURVEY OFFICE

PERSONNEL

REFERENCE NO. 14

SHEET 14 OF 30

NOTES HOMAN

DATE 4-21-04

ROUTE SR 162

H.C. HOMAN

WEATHER CLOUDY

COUNTY SENECA

R.C. NUHFER

TEMP. 60°

TOWNSHIP REED

HOOKER

SECTION 18-19

ARMS HUSS

T 2 N R 16 E

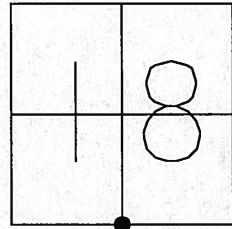
TYPE MONUMENT MAG NAIL

ON SURFACE ~~BELOW~~ ON

LEFT ~~C PAV'T - RIGHT~~ 1.5 LT

TO EDGE PAVEMENT

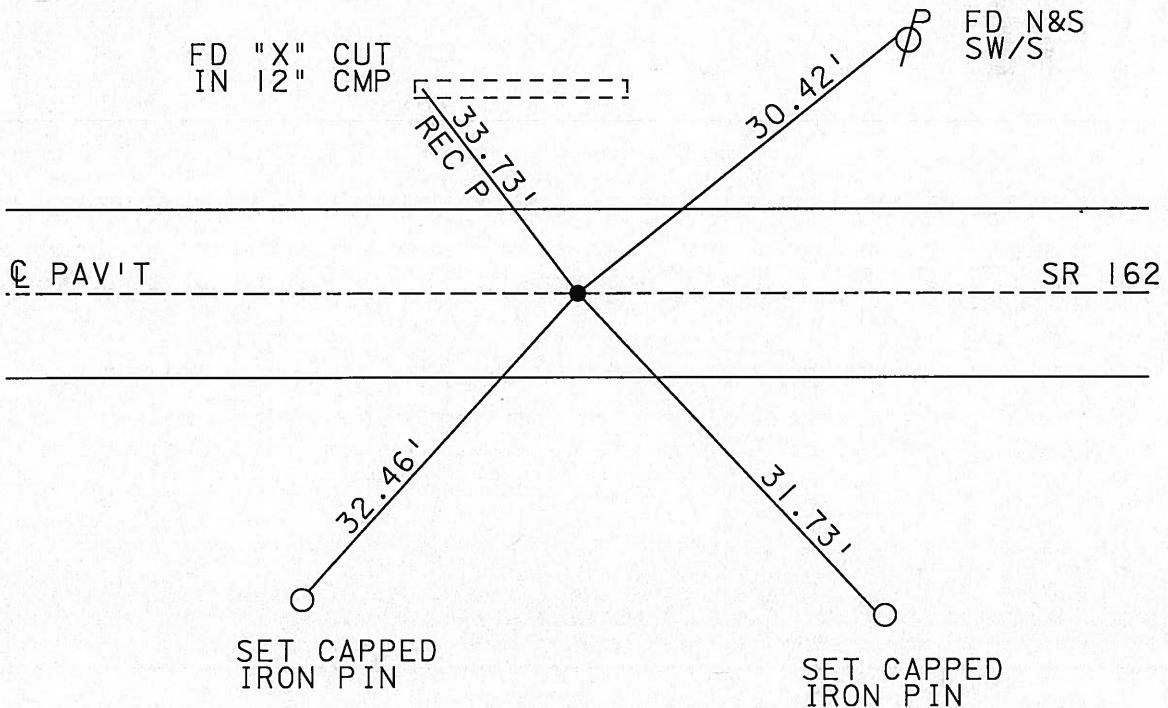
S.L.M. 189+98



1979 RECORD: PI DELTA = 00°-16' RT 347+18.70

SET MAG NAIL
& WASHER
9-07-04
DCH

2004 FD PK NAIL & WASHER 1 1/2" DOWN
FD MINE SPIKE 3 1/2" DOWN
FD SM R.R SPIKE 4 3/4" DOWN



O.D.O.T. DISTRICT 2 SURVEY OFFICE

PERSONNEL

REFERENCE NO. 14

SHEET 14 OF 30

NOTES Tripple Homan

H.C. Barnbour Homan

DATE 4-21-01
~~10-24-90~~

ROUTE 162

R.C. Geyman Hubfer

WEATHER Cloudy & Windy
~~Cloudy~~

COUNTY Sen.

Arms

TEMP. 46° 60°

TOWNSHIP Reed

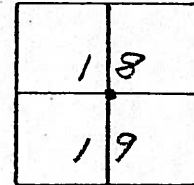
Hooker

SECTION 18-19

Hoss

T2 N R 16 E

TYPE MONUMENT PK & Washer Mag Nail
ON SURFACE - BELOW PK & Washer At top boat spike
LEFT - PAV'T. - RIGHT 1.5' LT & PAVMT.
TO EDGE PAVEMENT
S.L.M. 247 + 18.70 189 + 98



P.I. $\Delta = 00^{\circ} 16' RT.$

Iron Pin & Tacked Hub

Measured 7-14-04

Cloudy 75° 13'

Homan Notes

Barnhisel HC

Canterbury RC

SAT

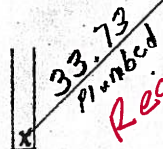
Fd 

Get Mag Nail

& Washer

9-07-04 * CUT IN 12" C.M.P.

DC#



Fd PK Nail & Washer
1 1/2" Down

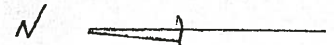
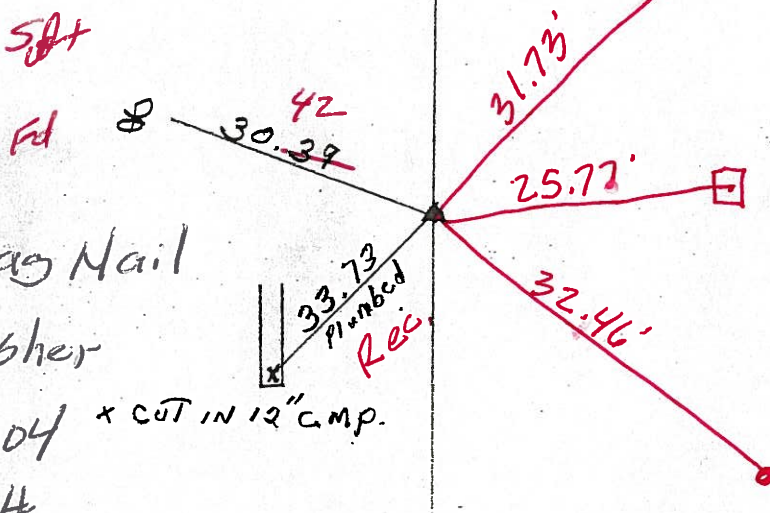
Fd Mine Spike 3 1/2" Down

Fd Sm RR Spike 4 3/4"

Capped Down
Iron Pin

Hub & Tack
Set

Capped
Iron Pin



O.D.O.T. DISTRICT 2 SURVEY OFFICE

PERSONNEL

REFERENCE NO. 14

SHEET 14 OF 30

NOTES Ripple

H.C. Barbour

R.C. Geyman

DATE 10-24-90

WEATHER Cloudy & Windy

TEMP. 46

ROUTE 162

COUNTY Sen.

TOWNSHIP Reed

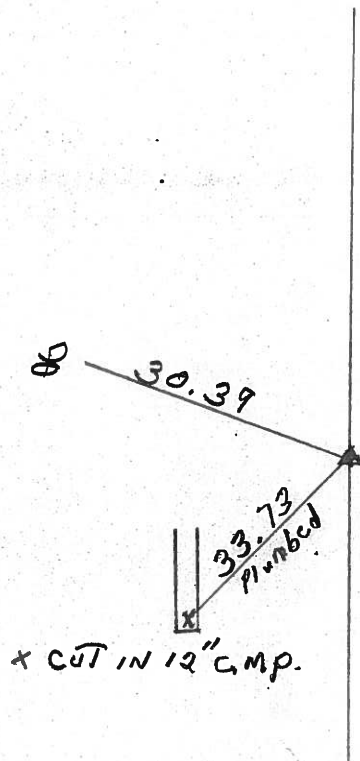
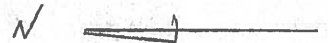
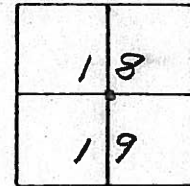
SECTION 18-19

T2 N R 16 E

TYPE MONUMENT P.K. & Washer
ON SURFACE - BELOW P.K. & Washer # top bolt spike
LEFT - & PAV'T. - RIGHT 1.5' RT. & Pavmt
TO EDGE PAVEMENT

S.L.M. 347 + 18.70

P.I. $\Delta = 00^{\circ} 16' RT.$



County Seneca S.R. # 162

Date 1/03/84

Township Reed

Weather overcast

Section 18 E 19

Temp. 32°

T2N, R16E

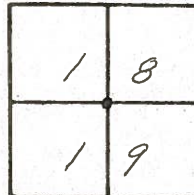
Personnel Cronin

Ripple

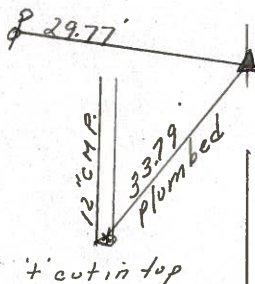
Geyman

Barbour

#14



P.I. Δ = 00° 16' Rt.
347 + 18.70
Set P.K. & washer at top boat
spike & washer at top R.P. spike
1.5' Lt. & Plumb



R. S.R. # 162

County Seneca S.R. 162

Date 6-12-79

Township Reed

Weather Fair

Section 18 & 19

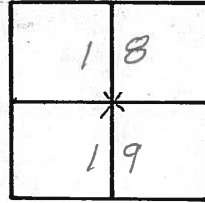
Temp. 70°

T₂N, R₁₇E

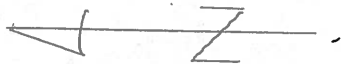
Personnel Schneider

Masser

Barbour



(14)



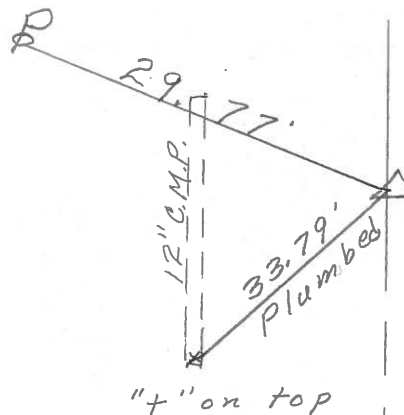
⊥ S.R. # 162

347 + 18.7

R.R. spk. on ⊥ R.W.

Mine spk. on surface

Δ = 0° 16' Rt.



S.H. 449 Sec. M.

(14)

347 + 18.7

Iron Pipe on ϕ

(13)

Fd 4-21-04

(15)

353 + 34.5

Harrow Tooth on ϕ

Fd 5. R.R Spike

4-21-04

(16)

373 + 60.45

Cor. Stone on ϕ

(15)

Fd Iron Pin

4-21-04

(17)

393 + 00

Cor Stone on ϕ

(16)

Fd 4-22-04

(18)

400 + 07.9

Cor. Stone on ϕ

Fd 4-22-04

(19)

426 + 433

Cor. Stone on ϕ

Fd 4-22-04

