

O.D.O.T. DISTRICT 2 SURVEY OFFICE (USE ONLY)

PERSONNEL \_\_\_\_\_ REFERENCE NO. 15 SHEET 17 OF 32

NOTES RHOADES DATE 9/16/16 ROUTE SR 162

H.C. O'DONNELL WEATHER FAIR COUNTY SENECA

R.C. RHOADES TEMP. 68° TOWNSHIP REED

SECTION 18

T 2 N R 17 E

TYPE MONUMENT MAG/WASHER

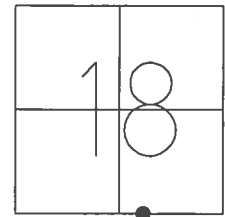
ON SURFACE - ~~BELOW~~ ON \_\_\_\_\_

LEFT - ☉ PAV'T - ~~RIGHT~~ 2'

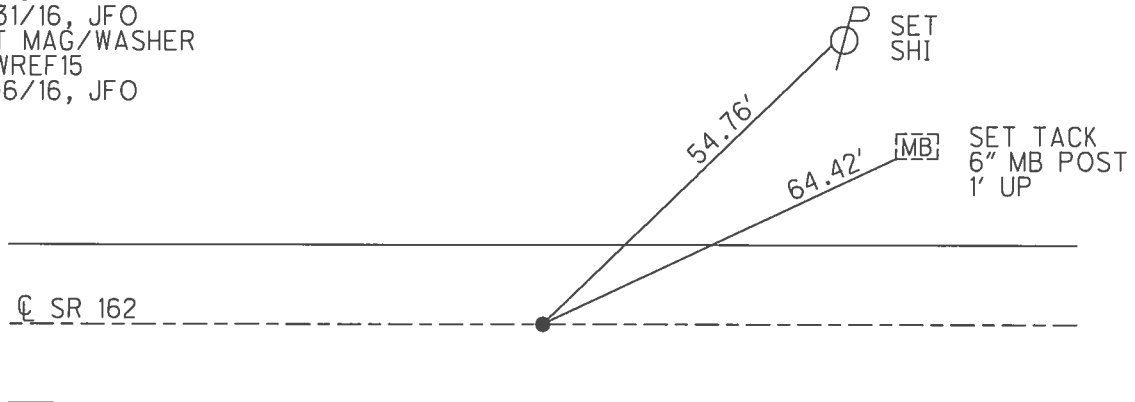
- TO - \_\_\_\_\_ EDGE PAVEMENT

S.L.M. 195+88

GRID: NORTHING: 531546.614 EASTING: 1845681.734



RECORD:  
 FD LG.R.R.SPIKE  
 12" DOWN  
 7/13/04, DCH  
 SET MAG/WASHER  
 9-07-04, DCH  
 FD MAG SHANK  
 REF15  
 5/31/16, JFO  
 SET MAG/WASHER  
 NEWREF15  
 9/16/16, JFO

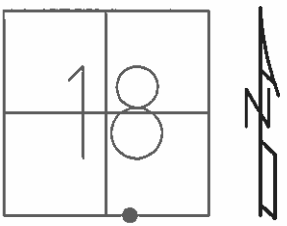


**O.D.O.T. DISTRICT 2 SURVEY OFFICE (USE ONLY)**

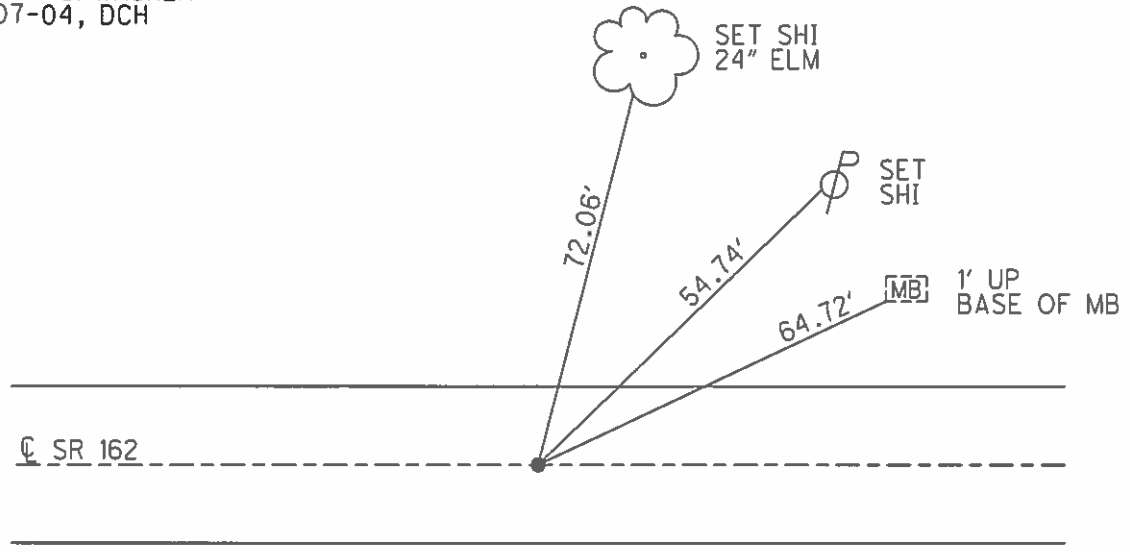
PERSONNEL \_\_\_\_\_ REFERENCE NO. 15 SHEET 17 OF 32

NOTES HOMAN \_\_\_\_\_ DATE 7/13/04 ROUTE SR 162  
 H.C. BARNHESEL WEATHER CLOUDY COUNTY SENECA  
 R.C. CANTERBURY TEMP. 75° TOWNSHIP REED  
 \_\_\_\_\_ SECTION 18  
 \_\_\_\_\_ T 2 N R 17 E

TYPE MONUMENT LG.R.R.SPIKE  
~~ON SURFACE~~ - BELOW 12"  
 LEFT - ☉ PAV'T - ~~RIGHT~~ 2'  
 - TO - EDGE PAVEMENT  
 S.L.M. 195+88  
 GRID: NORTHING: \_\_\_\_\_ EASTING: \_\_\_\_\_



RECORD:  
 SET MAG/WASHER  
 9-07-04, DCH



O.D.O.T. DISTRICT 2 SURVEY OFFICE

PERSONNEL

REFERENCE NO. 15

SHEET 15 OF 30

NOTES HOMAN

DATE 7-13-04

ROUTE SR 162

H.C. BARNHISEL

WEATHER CLOUDY

COUNTY SENECA

R.C. CANTERBURY

TEMP. 75°

TOWNSHIP REED

SECTION 18

T 2 N R 17 E

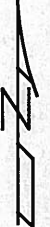
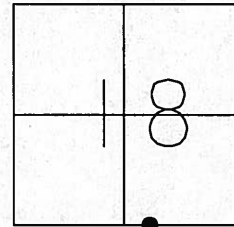
TYPE MONUMENT LG RR SPIKE

~~ON SURFACE~~ - BELOW 12"

LEFT ~~C PAV'T~~ RIGHT 2' LT

TO EDGE PAVEMENT

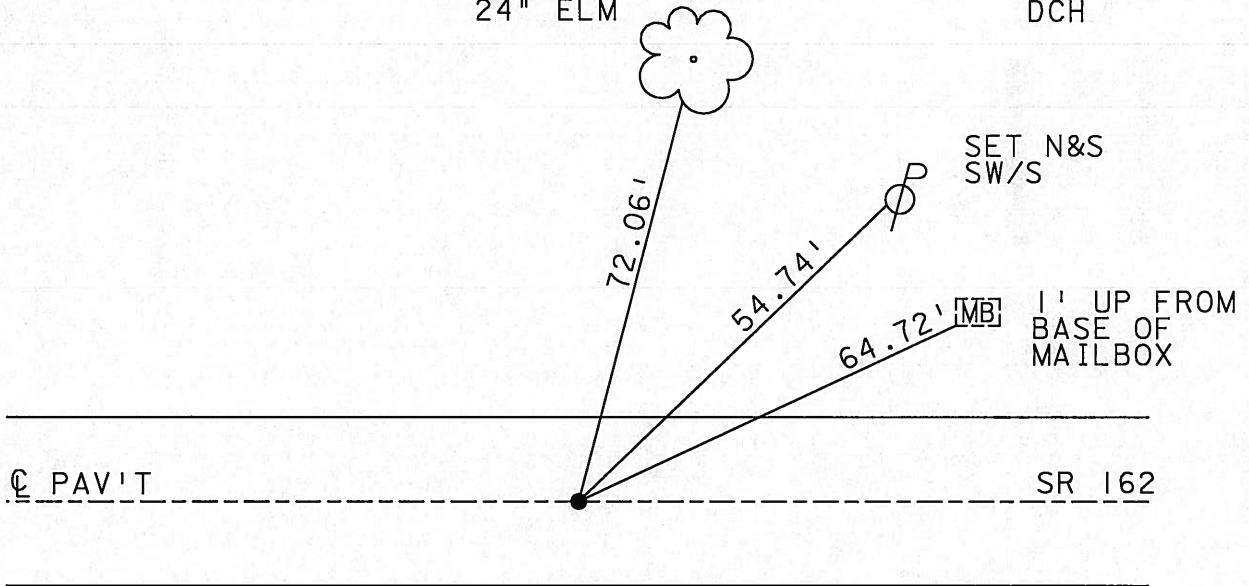
S.L.M. 195+88



OLD Record Sta. 353+34.5

SET N&S  
S/S  
24" ELM

SET MAG NAIL  
& WASHER  
9-07-04  
DCH



# O.D.O.T. DISTRICT 2 SURVEY OFFICE

PERSONNEL

REFERENCE NO. 15

SHEET 15 OF 30

NOTES Propts Homan

7-17-04

H.C. Barkhous Barnhiser

DATE 10-24-90

ROUTE 162

R.C. Gayman

WEATHER Cloudy

COUNTY Sen.

Canterbury

TEMP. 75°

TOWNSHIP Reed

SECTION 18-19

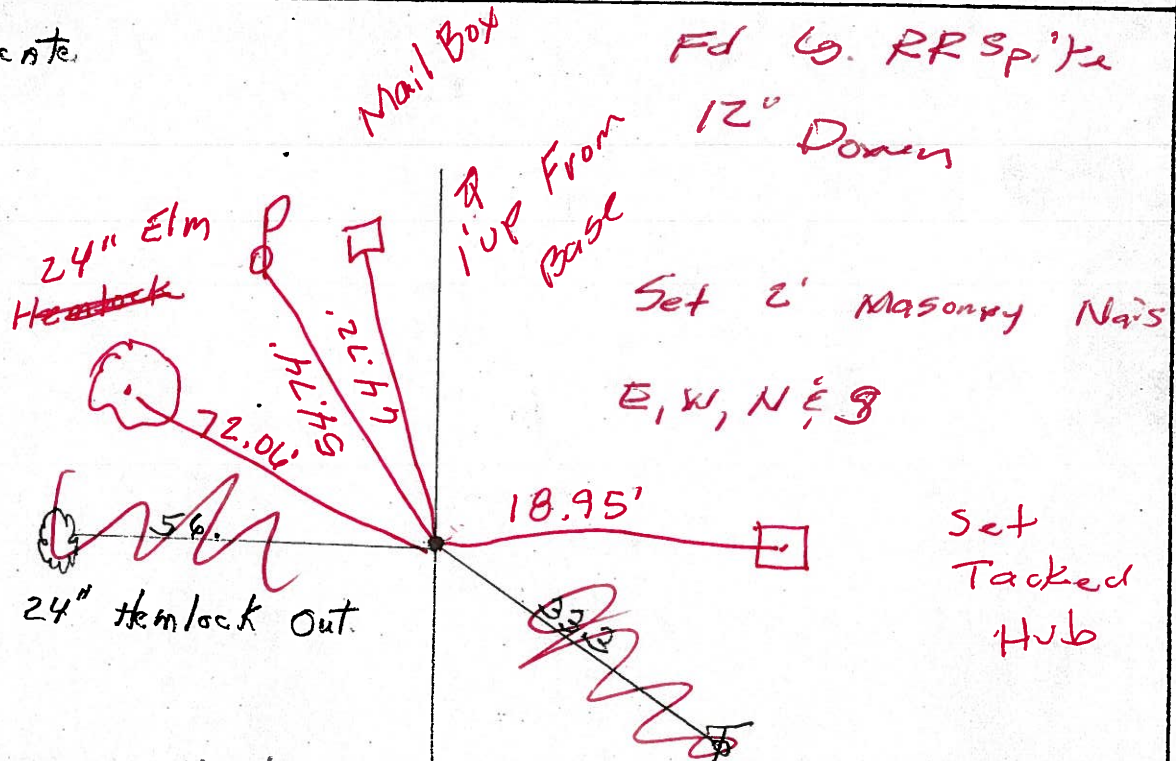
T2 N R 17 E

TYPE MONUMENT Did not locate  
 ON SURFACE - BELOW HARROW Toth below on L  
 LEFT- & PAV'T. - RIGHT 2' LT  
 TO EDGE PAVEMENT  
 S.L.M. 353 + 34.5 195 + 88

18	19
----	----



Did not locate



Set Mag Nail  
 & washer  
 9-07-04  
 DCH

O.D.O.T. DISTRICT 2 SURVEY OFFICE

PERSONNEL

REFERENCE NO. 15

SHEET 15 OF 30

NOTES Ripple

H.C. Barbour

R.C. Geyman

DATE 10-24-90

WEATHER \_\_\_\_\_

TEMP. \_\_\_\_\_

ROUTE 162

COUNTY Sen.

TOWNSHIP Reed

SECTION 18 & 19

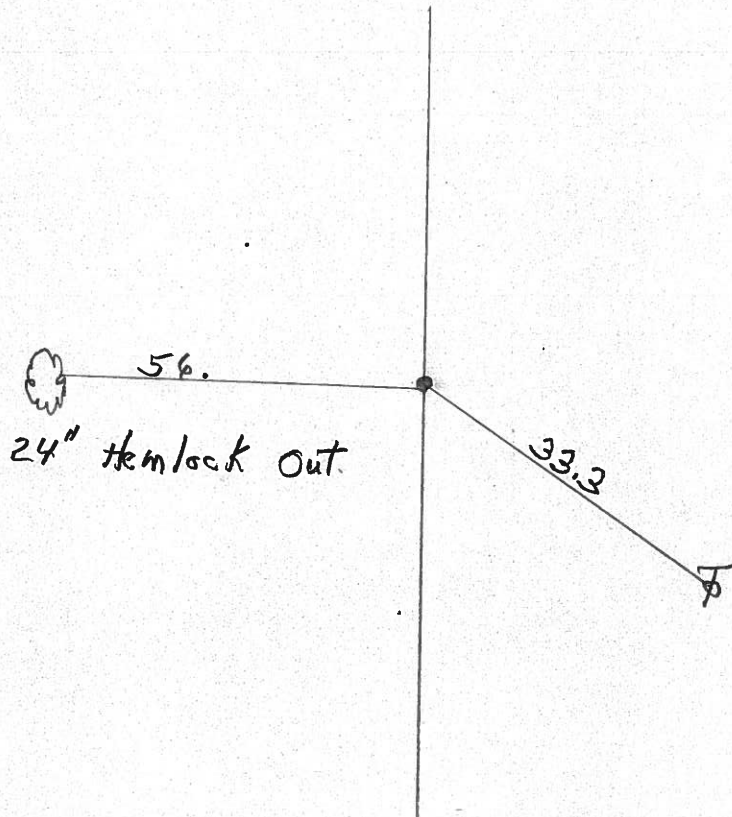
T2 N R 17 E

TYPE MONUMENT Did not locate  
ON SURFACE - BELOW HARROW Tooth below on E  
LEFT - & PAV'T. - RIGHT \_\_\_\_\_  
\_\_\_\_\_ TO \_\_\_\_\_ EDGE PAVEMENT  
S.L.M. 353 + 34.5

18	19
18	19



Did not locate



County Seneca S.R. 162

Date 6-12-79

Township Reed

Weather Fair

Section 18 & 19

Temp. 70°

T<sub>2</sub>N, R<sub>12</sub>E

Personnel Schneider

Masser

Barbour

18	19
X	X



(15)



⊕ S.R. #162

353+34.5

Harrow tooth on ⊕

Δ = 0° 0'

out

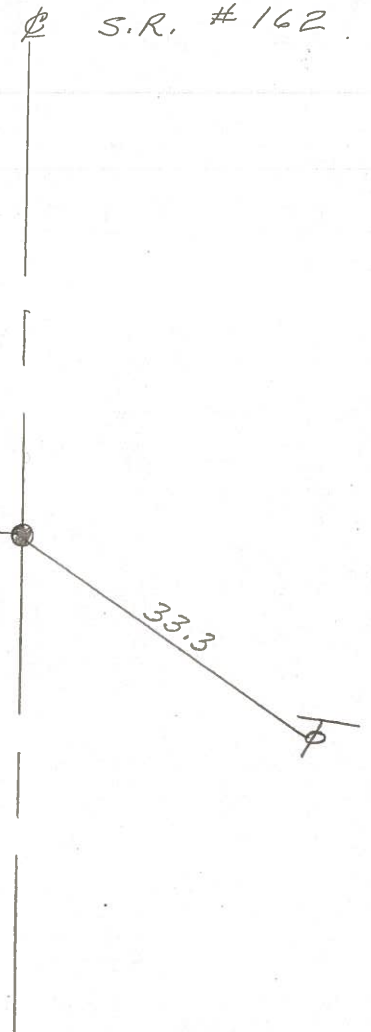


56

24" Hemlock

33.3

did not find



S. H. 447 Sec. M.

(14)

347 + 18.7

Iron Pipe on  $\angle$

FD 4-21-04

(15)

353 + 34.5

Harrow Tooth on  $\angle$

FA S. RR Spike  
4-21-04

(16)

373 + 60.45

Cor. Stone on  $\angle$

FD Iron Pin  
4-21-04

(17)

393 + 00

Cor Stone on  $\angle$

FD 4-22-04

400 + 07.9

Cor. Stone on  $\angle$

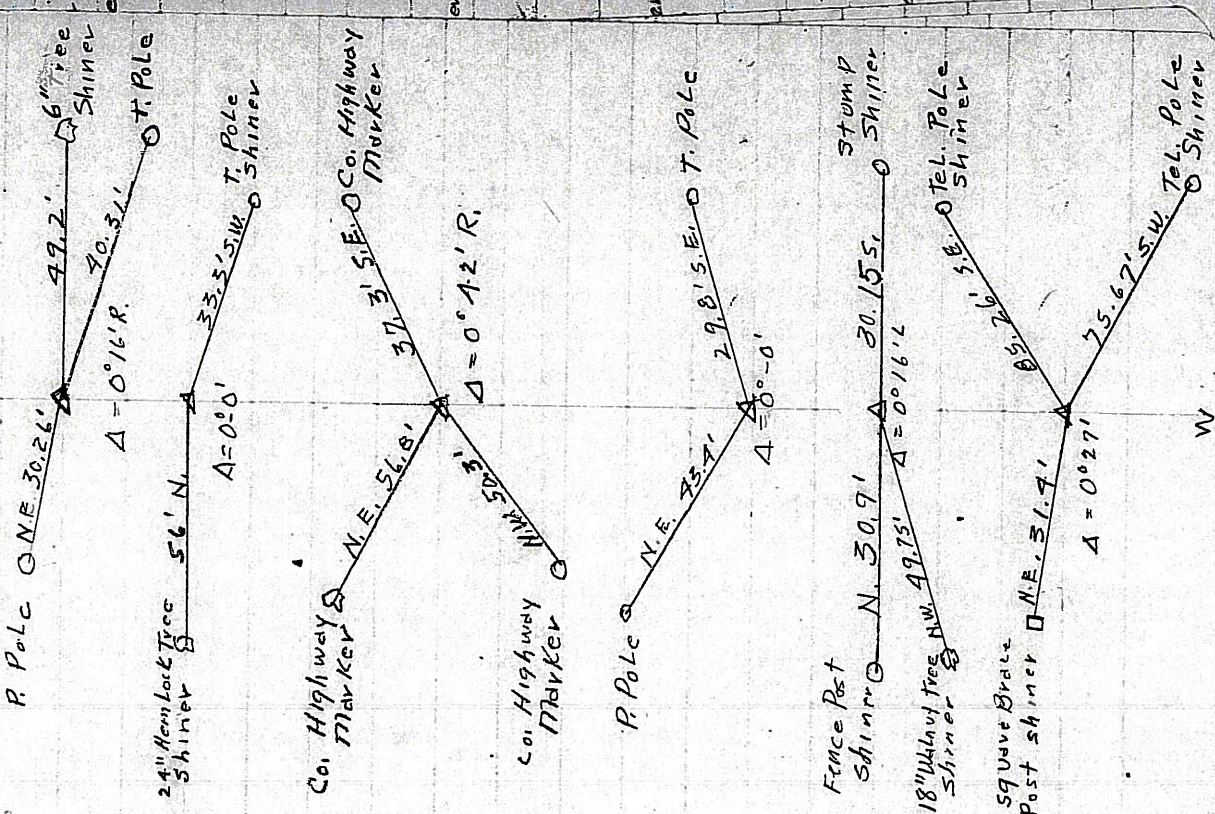
FD 4-22-04

(18)

426 + 43.3

Cor. Stone on  $\angle$

FD 4-22-04



A

E

W