

O.D.O.T. DISTRICT 2 SURVEY OFFICE (USE ONLY)

PERSONNEL _____ REFERENCE NO. 17 SHEET 19 OF 32

NOTES RHOADES _____ DATE 8/1/17 ROUTE SR 162
 H.C. HOMAN _____ WEATHER SUNNY COUNTY SENECA
 R.C. CARSON _____ TEMP. 85° TOWNSHIP REED
 POORE _____ SECTION 17
 T 2 N R 17 E

TYPE MONUMENT MAG/WASHER

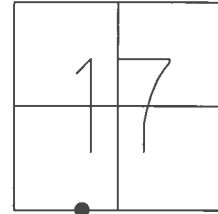
ON SURFACE - ~~BELOW~~ ON _____

LEFT - ☉ PAV'T - ~~RIGHT~~ 2'

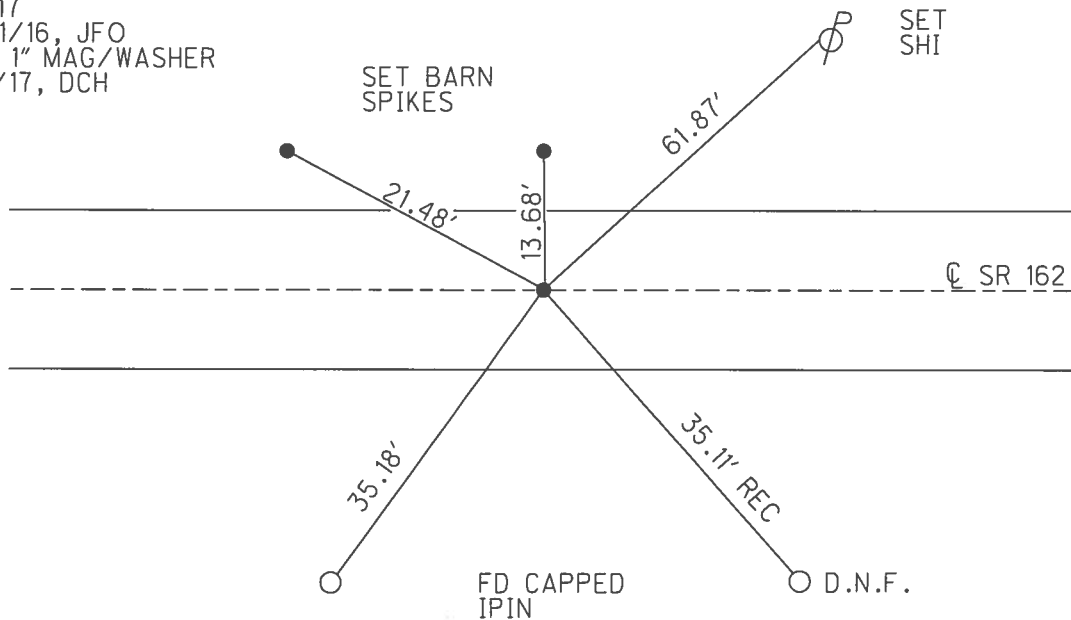
- TO - EDGE PAVEMENT

S.L.M. 235+90

GRID: NORTHING: 531490.912 EASTING: 1849647.610



RECORD: P.O.T.
 FD SM.R.R.SPIKE
 3" DOWN
 FD SM.R.R.SPIKE
 5" DOWN
 SET MAG/WASHER
 9/7/04, DCH
 FD MAG/WASHER
 REF17
 5/31/16, JFO
 SET 1" MAG/WASHER
 8/1/17, DCH



O.D.O.T. DISTRICT 2 SURVEY OFFICE (USE ONLY)

PERSONNEL _____ REFERENCE NO. 17 SHEET 19 OF 32

NOTES HOMAN DATE 7/13/04 ROUTE SR 162
 H.C. BARNHISEL WEATHER CLOUDY COUNTY SENECA
 R.C. CANTERBURY TEMP. 80° TOWNSHIP REED
 _____ SECTION 17
 _____ T 2 N R 17 E

TYPE MONUMENT P.K./WASHER

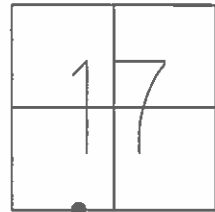
~~ON SURFACE~~ - BELOW 1"

LEFT - ☉ PAV'T - ~~RIGHT~~ 1'

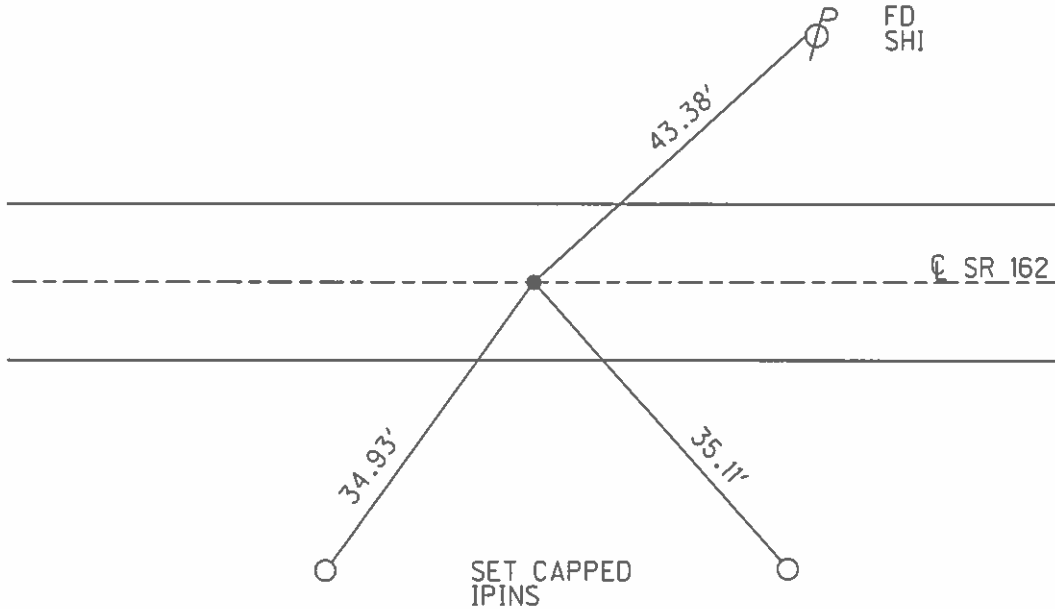
- TO - EDGE PAVEMENT

S.L.M. 235+90

GRID: NORTHING: _____ EASTING: _____



RECORD: P.O.T.
 FD SM.R.R.SPIKE
 3" DOWN
 FD SM.R.R.SPIKE
 5" DOWN
 SET MAG/WASHER
 9/7/04, DCH



O.D.O.T. DISTRICT 2 SURVEY OFFICE

PERSONNEL _____

REFERENCE NO. 17

SHEET 17 OF 30

NOTES HOMAN

DATE 7-13-04

ROUTE SR 162

H.C. BARNHISEL

WEATHER CLOUDY

COUNTY SENECA

R.C. CANTERBURY

TEMP. 80°

TOWNSHIP REED

SECTION 17-20

T 2 N R 17 E

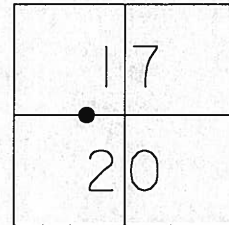
TYPE MONUMENT _____ SEE BELOW

ON SURFACE - BELOW _____ SEE BELOW

LEFT ~~C PAVT~~ RIGHT _____ 1' LT

_____ TO _____ EDGE PAVEMENT

S.L.M. _____ 235+90

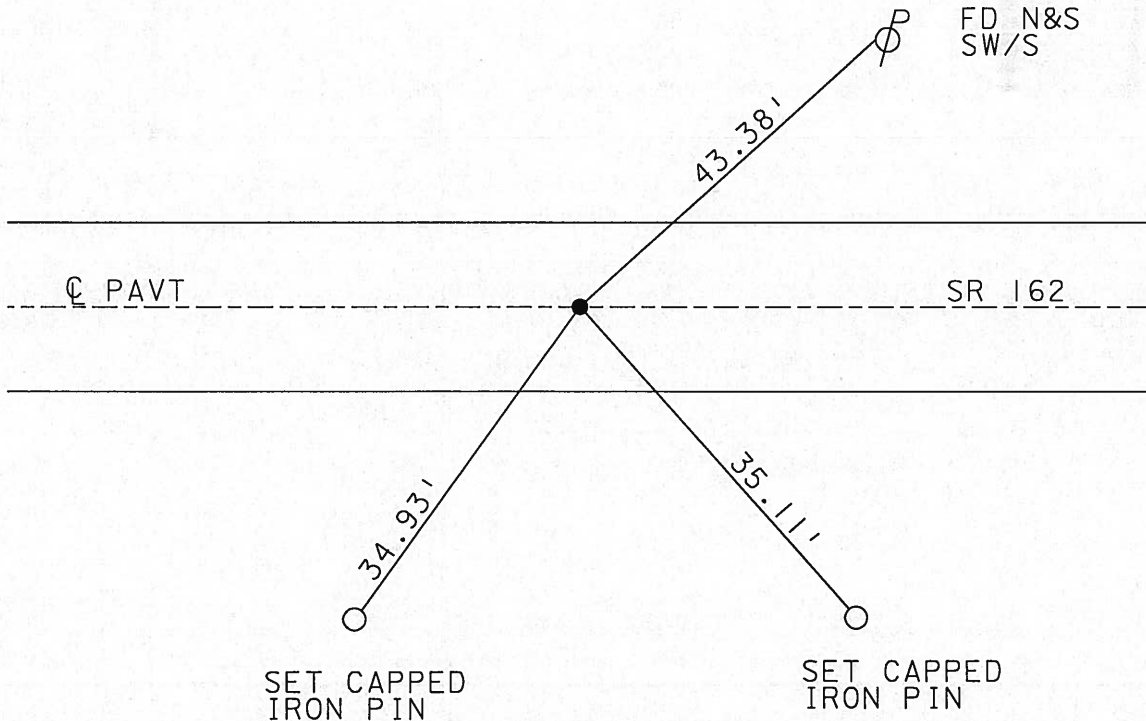


RECORD: POT

SET MAG NAIL
& WASHER
9-07-04
DCH

2004

FD PK & WASHER 1 1/2" DOWN OVER A
SM RR SPIKE 3" DOWN OVER A
SM RR SPIKE 5" DOWN



O.D.O.T. DISTRICT 2 SURVEY OFFICE

PERSONNEL

REFERENCE NO. 17

SHEET 17 OF 30

NOTES Apple Homan

H.C. Barnhart Barnhizer

DATE 7-13-04
10-24-90

ROUTE 162

R.C. Geyman

WEATHER cloudy + windy - 100

COUNTY Sen

Canterbury

TEMP. 46 88°

TOWNSHIP Reed

SECTION 17 + 20

T2 N R17 E

TYPE MONUMENT PK + Washer *fd*

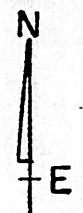
ON SURFACE - BELOW PK. Atop Mine spk Atop RR spk.

LEFT - ☉ PAV'T. - RIGHT 1' Lt. ☉ ✓

TO EDGE PAVEMENT

S.L.M. 235 + 90 ✓ 393400

1	7
2	0

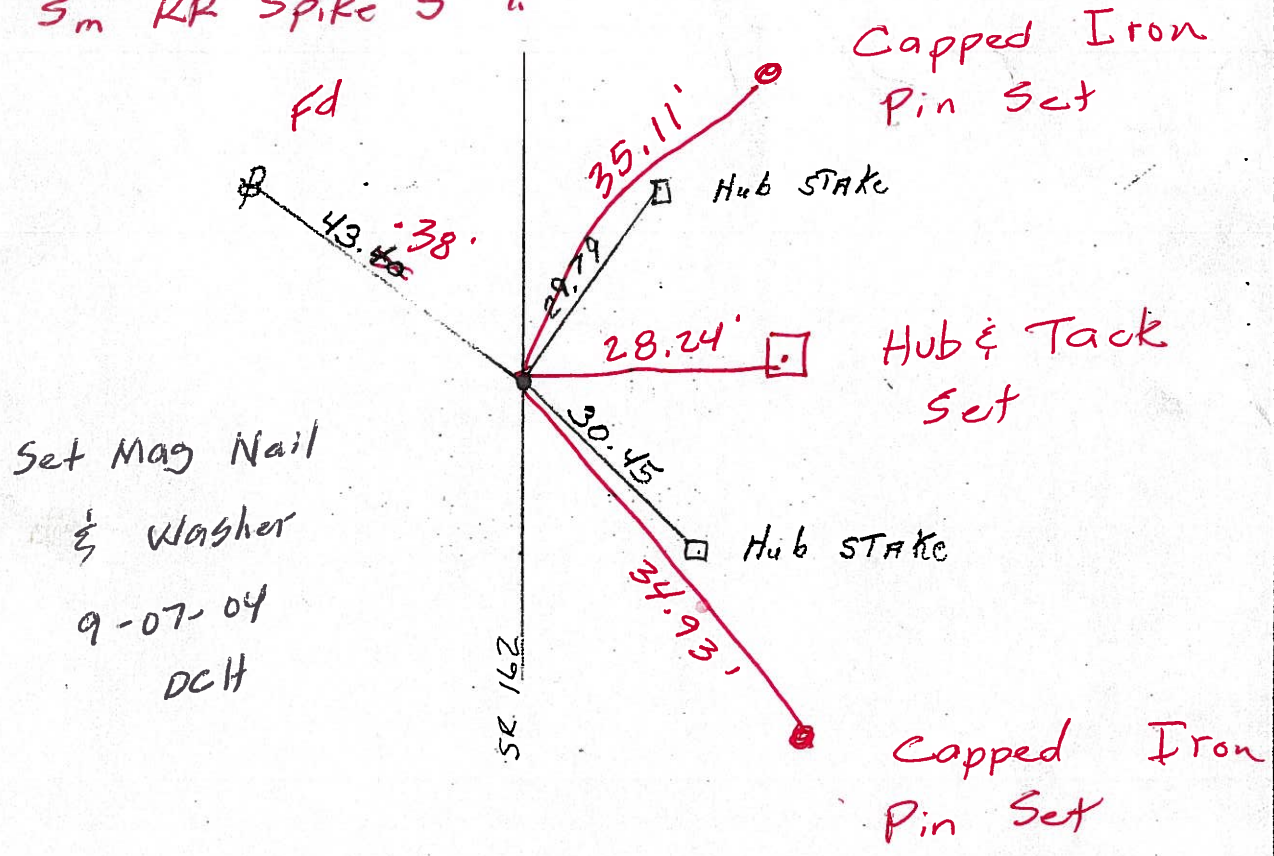
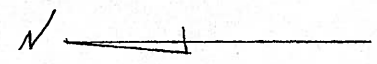


P.O.T.

fd PK & Washer 1 1/2" Down

fd 5m RR Spike 3" "

fd 5m RR Spike 5" "



O.D.O.T. DISTRICT 2 SURVEY OFFICE

PERSONNEL

REFERENCE NO. 17

SHEET 17 OF 30

NOTES Ripple

H.C. Barbour

DATE 10-24-90

ROUTE 162

R.C. Geyman

WEATHER Cloud & Windy

COUNTY Sen

TEMP. 46

TOWNSHIP Reed

SECTION 17 & 20

T2 N R17 E

TYPE MONUMENT PK. & Washer

ON SURFACE - BELOW PK. ATop Mine spt. ATop R.R. spt.

LEFT - ☉ PAV'T. - RIGHT 1' Lt. ☉

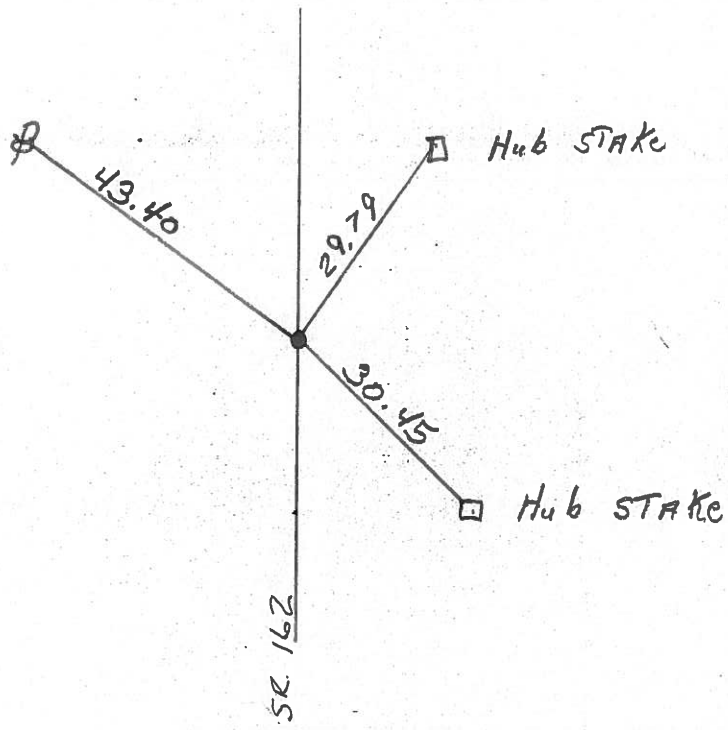
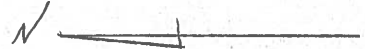
TO EDGE PAVEMENT

S.L.M. 235 + 90

1	7
2	0



P.O.T.



County Seneca S.R. #162

Date 12/20/83

Township Reed

Weather sunny

Section 17 E 20

Temp. 17°

T2N, R12E

Personnel Cronin

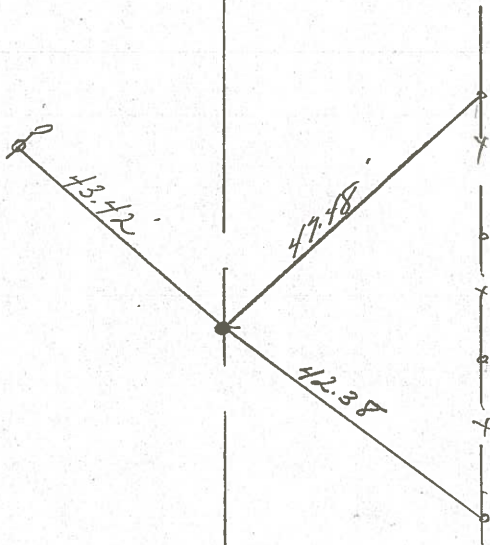
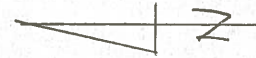
1	7
2	0



#17

Ripple

Geyman



P.O.T.

- 393 +00
- set P.K. & washer atop mine
- spike atop R.R. spike
- 1' Lt. & Point.

S.R. #162 P

County Seneca S.R. 162

Date 6-12-79

Township Reed

Weather Fair

Section 17 & 20

Temp. 72°

T₂N, R₁₇E

Personnel Schneider

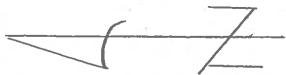
Mosser

Barbour

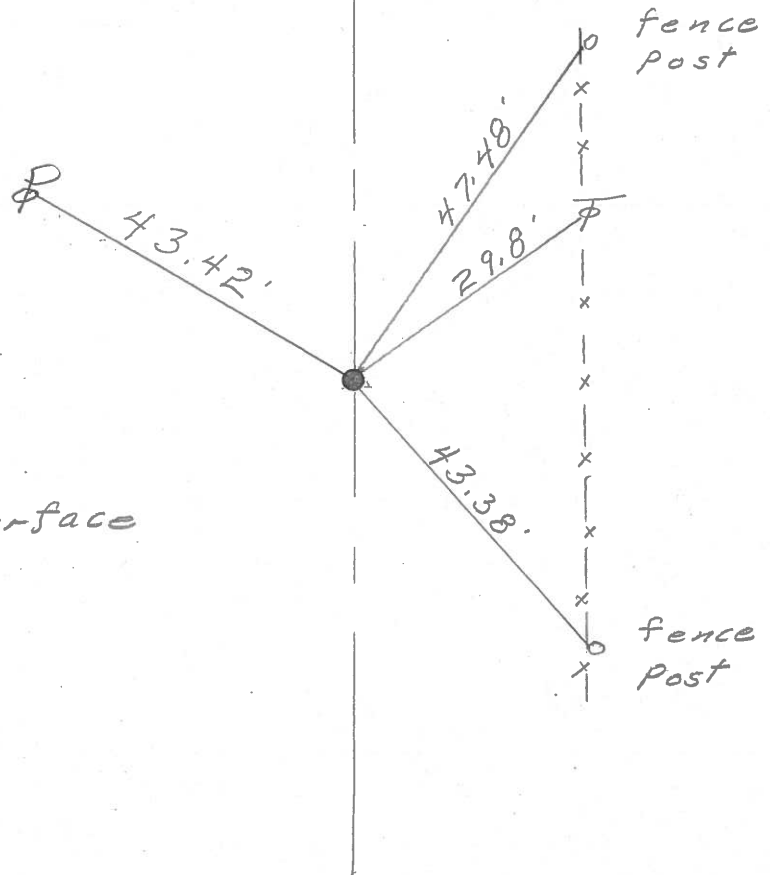
18	17
	X
19	20



(17)



⊥ S.R. # 162



393+00

R.R. SPK. on ⊥

Small R.R. spk on surface

1 1/2' Lt. of ⊥

Δ = 0° 0'

S. H. 447 Sec. M.

(14)

347 + 18.7

Iron Pipe on ϕ

(13)

FD

4-21-04

2

(15)

353 + 34.5

Harrow Tooth on ϕ

FD S. RR Spike

4-21-04

(16)

373 + 60.45

Cor. Stone on ϕ

FD

Iron Pin

4-21-04

(17)

393 + 00

Cor. Stone on ϕ

(18)

400 + 07.9

Cor. Stone on ϕ

FD

4-22-04

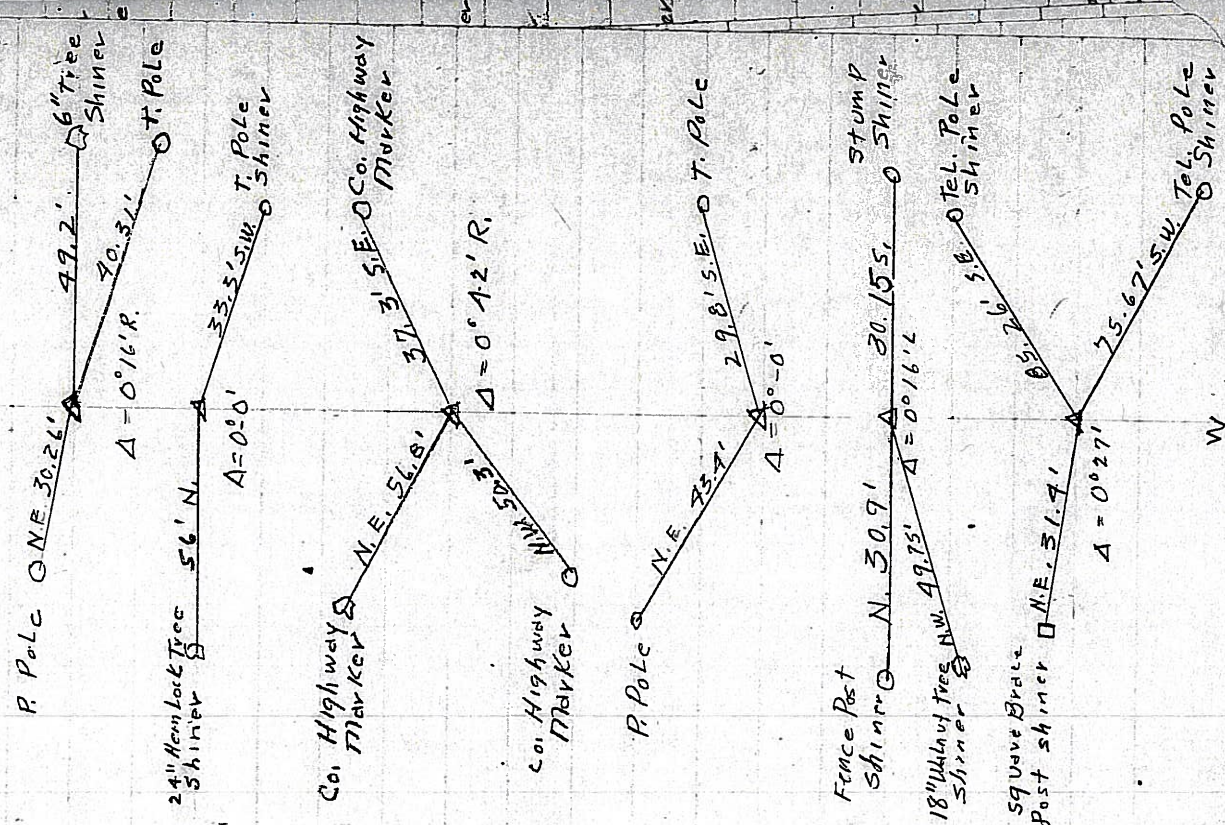
(19)

426 + 43.3

Cor. Stone on ϕ

FD

4-22-04



A

E

W