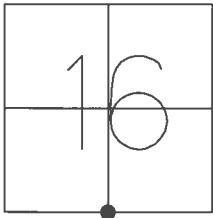


O.D.O.T. DISTRICT 2 SURVEY OFFICE (USE ONLY)

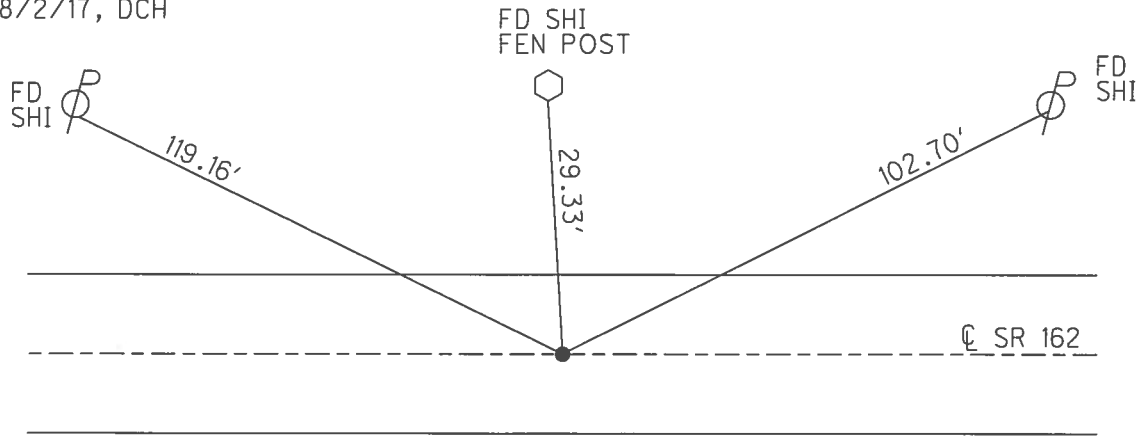
PERSONNEL \_\_\_\_\_ REFERENCE NO. 20 SHEET 22 OF 32  
 NOTES POORE \_\_\_\_\_ DATE 8/2/17 \_\_\_\_\_ ROUTE SR 162  
 H.C. HOMAN \_\_\_\_\_ WEATHER SUNNY \_\_\_\_\_ COUNTY SENECA  
 R.C. CARSON \_\_\_\_\_ TEMP. 75° \_\_\_\_\_ TOWNSHIP REED  
 RHOADES \_\_\_\_\_ SECTION 16  
 T 2 N R 17 E

TYPE MONUMENT MAG/WASHER  
 ON SURFACE - ~~BELOW~~ ON \_\_\_\_\_  
~~LEFT~~ -  $\odot$  PAV'T - RIGHT 0.5'  
 - TO - EDGE PAVEMENT  
 S.L.M. 295+86



GRID: NORTHING: 531417.309 EASTING: 1855634.513

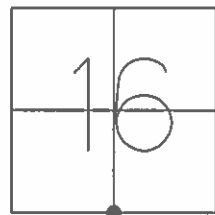
RECORD: P.I.  
 $\Delta = 00^{\circ} 18' LT$   
 FD P.K./WASHER  
 2" DOWN  
 SM.R.R.SPIKE  
 3" DOWN  
 SET MAG NAIL  
 9/7/04, DCH  
 FD MAG/WASHER  
 REF20  
 5/31/16, JFO  
 SET 1" MAG/WASHER  
 8/2/17, DCH



O.D.O.T. DISTRICT 2 SURVEY OFFICE (USE ONLY)

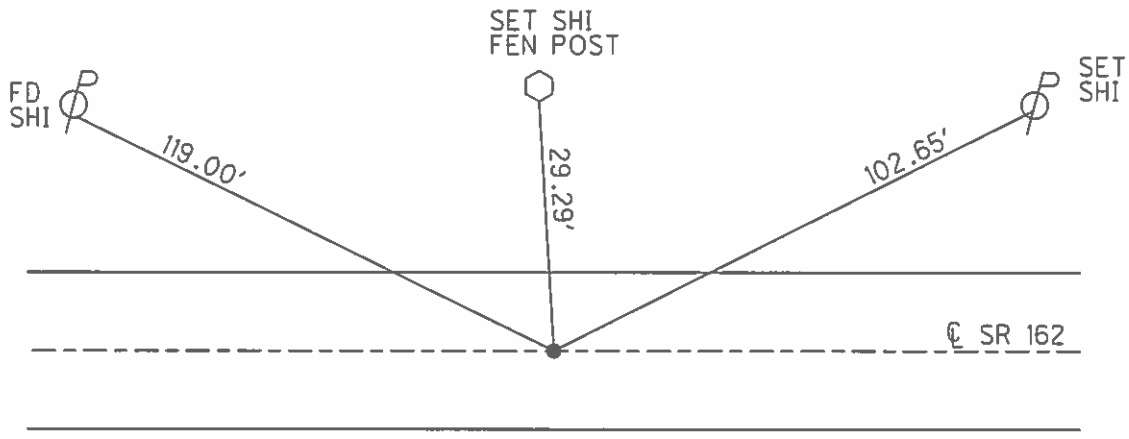
PERSONNEL \_\_\_\_\_ REFERENCE NO. 20 SHEET 22 OF 32  
 NOTES HOMAN DATE 7/13/04 ROUTE SR 162  
 H.C. BARNHISEL WEATHER CLOUDY COUNTY SENECA  
 R.C. CANTERBURY TEMP. 85° TOWNSHIP REED  
 \_\_\_\_\_ SECTION 16  
 \_\_\_\_\_ T 2 N R 17 E

TYPE MONUMENT P.K.SHANK  
 ON SURFACE - ~~BELOW~~ ON \_\_\_\_\_  
~~LEFT~~ - CL PAV'T - RIGHT 0.5'  
 - TO - EDGE PAVEMENT  
 S.L.M. 295+86



GRID: NORTHING: \_\_\_\_\_ EASTING: \_\_\_\_\_

RECORD: P.I.  
 $\Delta = 00^\circ 18' \text{ LT}$   
 FD P.K./WASHER  
 2" DOWN  
 SM.R.R.SPIKE  
 3" DOWN  
 SET MAG NAIL  
 9/7/04, DCH



O.D.O.T. DISTRICT 2 SURVEY OFFICE

PERSONNEL

REFERENCE NO. 20

SHEET 20 OF 30

NOTES HOMAN

DATE 7-13-04

ROUTE SR 162

H.C. BARNHISEL

WEATHER CLOUDY

COUNTY SENECA

R.C. CANTERBURY

TEMP. 85°

TOWNSHIP REED

SECTION 16

T 2 N R 17 E

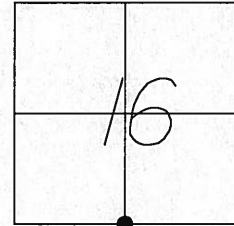
TYPE MONUMENT SEE BELOW

ON SURFACE - BELOW SEE BELOW

~~LEFT - C PAVT - RIGHT~~ 0.5' RT

TO EDGE PAVEMENT

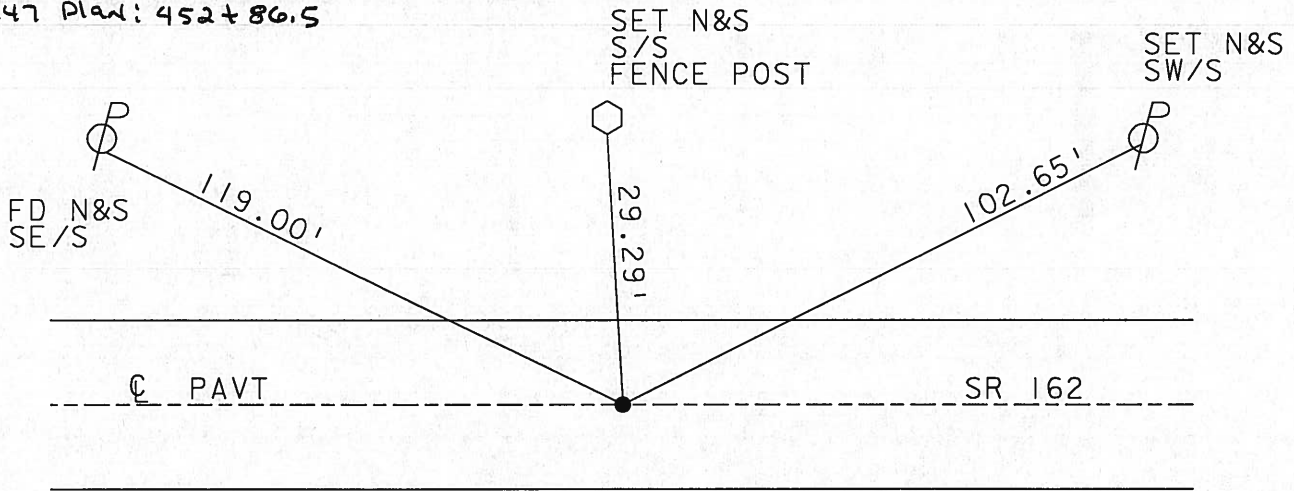
S.L.M. 295+86



1979 RECORD: PI DELTA= 00°-18' LT

SET MAG NAIL  
9-07-04  
DCH

2004 FD PK SHANK ON SURFACE  
OVER A PK NAIL & WASHER 2" DOWN  
OVER A SM RR SPIKE 3 3/4" DOWN  
1947 Plan: 452+86.5



# O.D.O.T. DISTRICT 2 SURVEY OFFICE

PERSONNEL

REFERENCE NO. 20

SHEET 20 OF 30

NOTES Bjppk Homan

7-13-04

H.C. BARBOUR Barnhisel

DATE 7-24-90

ROUTE 162

R.C. Geyman

WEATHER Cloudy Windy

COUNTY Sen.

Canterbury

TEMP. 46° 85°

TOWNSHIP Reed

SECTION 16 + 21

T 2 N R 17 E

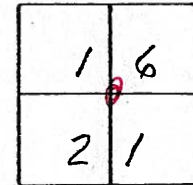
TYPE MONUMENT PK & Washer

ON SURFACE - BELOW PK. A top Min. Spk. A top corner Stone

LEFT - & PAV'T. - RIGHT + AT. & 0.5' R+

TO EDGE PAVEMENT

S.L.M. 295 + 86 ✓ 452 + 86.5 1942 Plan



PI.  $\Delta = 00^\circ 18' \text{ LT.}$

Fd PK Shank on Surface

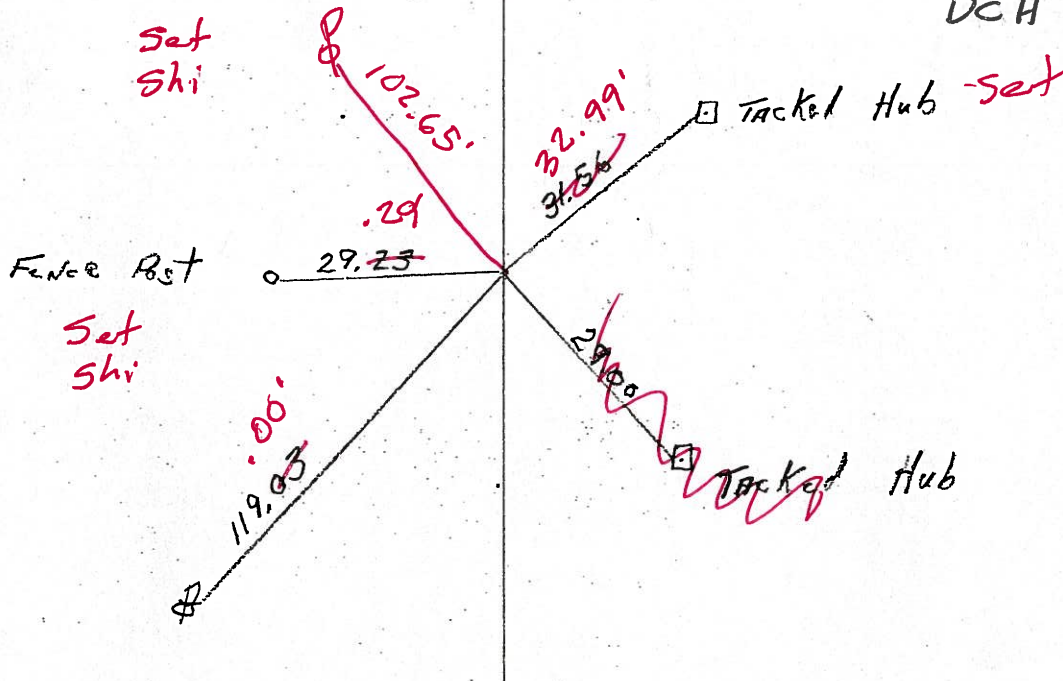
Fd PK Nail & Washer 2" Down

Fd Sm RR spike 3 3/4" Down

Set Mag Nail

9-07-04

DCH



# O.D.O.T. DISTRICT 2 SURVEY OFFICE

PERSONNEL

REFERENCE NO. 20

SHEET 20 OF 30

NOTES Ripple

H.C. BARBOUR

DATE 10-24-90

ROUTE 162

R.C. GEYMAN

WEATHER Cloudy Windy

COUNTY Sen.

TEMP. 46°

TOWNSHIP Reed

SECTION 16 + 21

T 2 N R 17 E

TYPE MONUMENT PK + Washer

ON SURFACE - BELOW PK. ATOP MAIN SPK. ATOP CORNER STONE

LEFT- & PAV'T. - RIGHT 1' AT. &

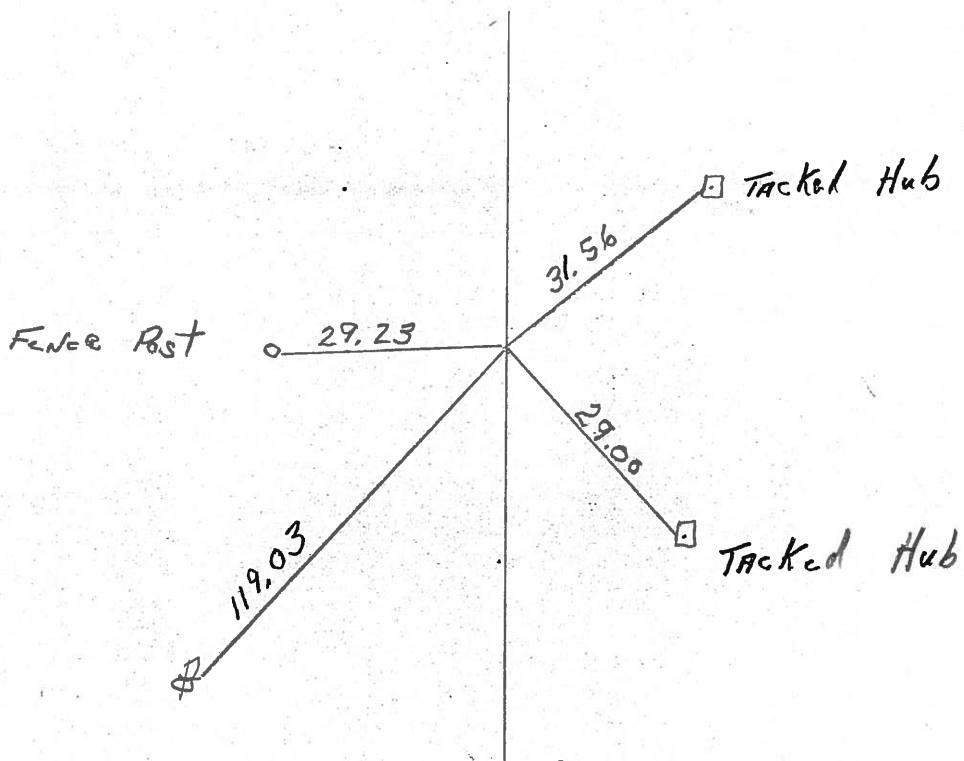
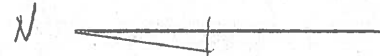
TO EDGE PAVEMENT

S.L.M. 295 + 86

1	6
2	1



PI:  $\Delta = 00^\circ 18' \text{ LT.}$



County Seneca S.R. #162

Date 12/20/83

Township Reed

Weather sunny

Section 16, E 21

Temp. 17°

T2N, R12E

Personnel Cronin

Ripple

Geyman

\_\_\_\_\_

\_\_\_\_\_

\_\_\_\_\_

\_\_\_\_\_

\_\_\_\_\_

\_\_\_\_\_

\_\_\_\_\_

\_\_\_\_\_

\_\_\_\_\_

\_\_\_\_\_

\_\_\_\_\_

\_\_\_\_\_

\_\_\_\_\_

\_\_\_\_\_

\_\_\_\_\_

\_\_\_\_\_

\_\_\_\_\_

\_\_\_\_\_

\_\_\_\_\_

\_\_\_\_\_

\_\_\_\_\_

\_\_\_\_\_

\_\_\_\_\_

\_\_\_\_\_

\_\_\_\_\_

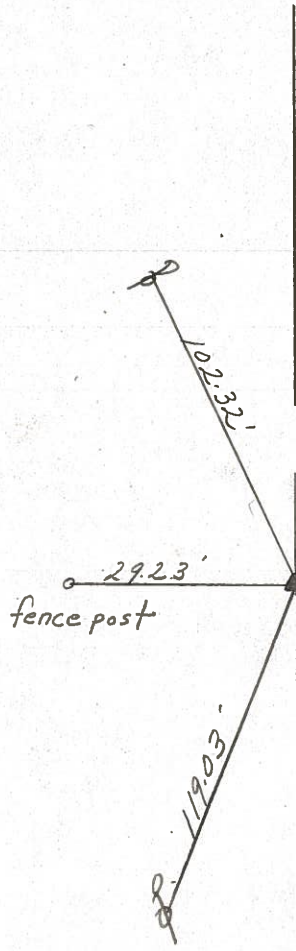
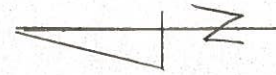
\_\_\_\_\_

\_\_\_\_\_

\_\_\_\_\_

\_\_\_\_\_

1	6
2	1



P.I. Δ = 00° 18' Lt.

452 + 86.50

Set P.K. & washer atop

mine spike atop corner

stone 1 ft. E Point

Corner Stone should be below

S.R. # 162

#20

County Seneca S.R. 162

Date 6-12-79

Township Reed

Weather Fair

Section 16 & 21

Temp. 72°

T2N, R12E

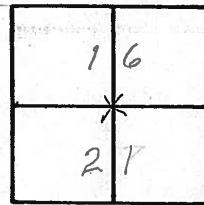
Personnel Schneider

Messer

Barbour

\_\_\_\_\_

\_\_\_\_\_



(20)



☉ S.R. #162

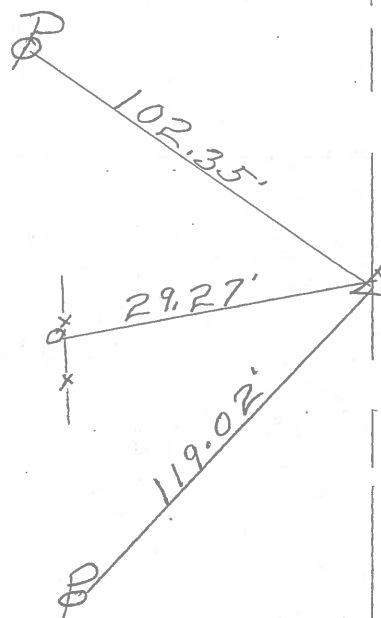
452+86.5

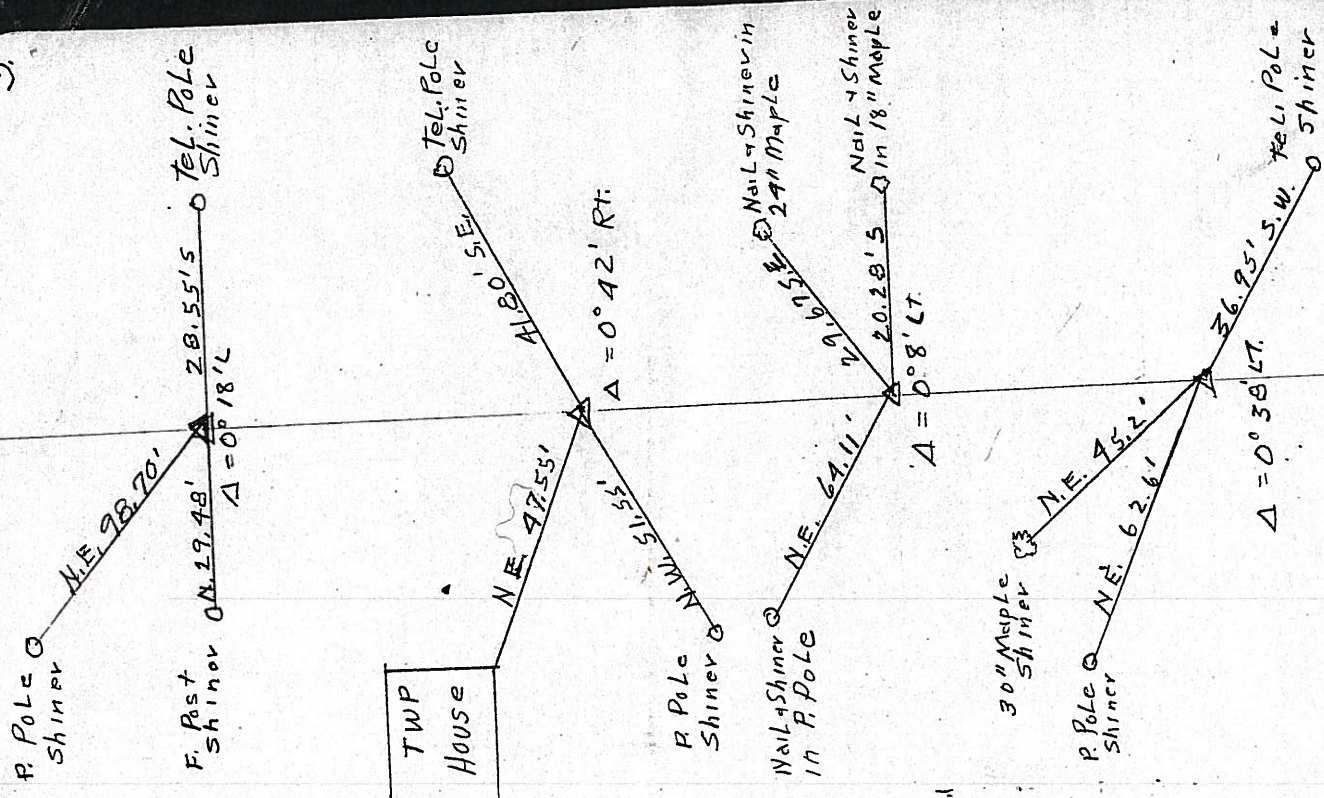
Small R.R. spk. on surface

Cor. stone

$\Delta = 0^{\circ} 18' Lt.$

Fence  
Post





S.H. 449 Sec M.

(20)

452 + 86.5 Cor. Stone on E

Fd 4-22-04

(21)

477 + 30 Cor. Stone on E

Fd 4-1-04

(22)

506 + 18.33 Cor. Stone on E

Fd 4-22-04

(23)

533 + 01.3 Cor. Stone on E

Fd 3-31-04