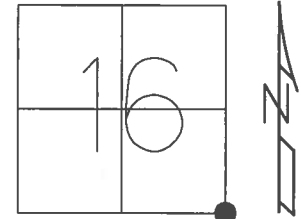


O.D.O.T. DISTRICT 2 SURVEY OFFICE (USE ONLY)

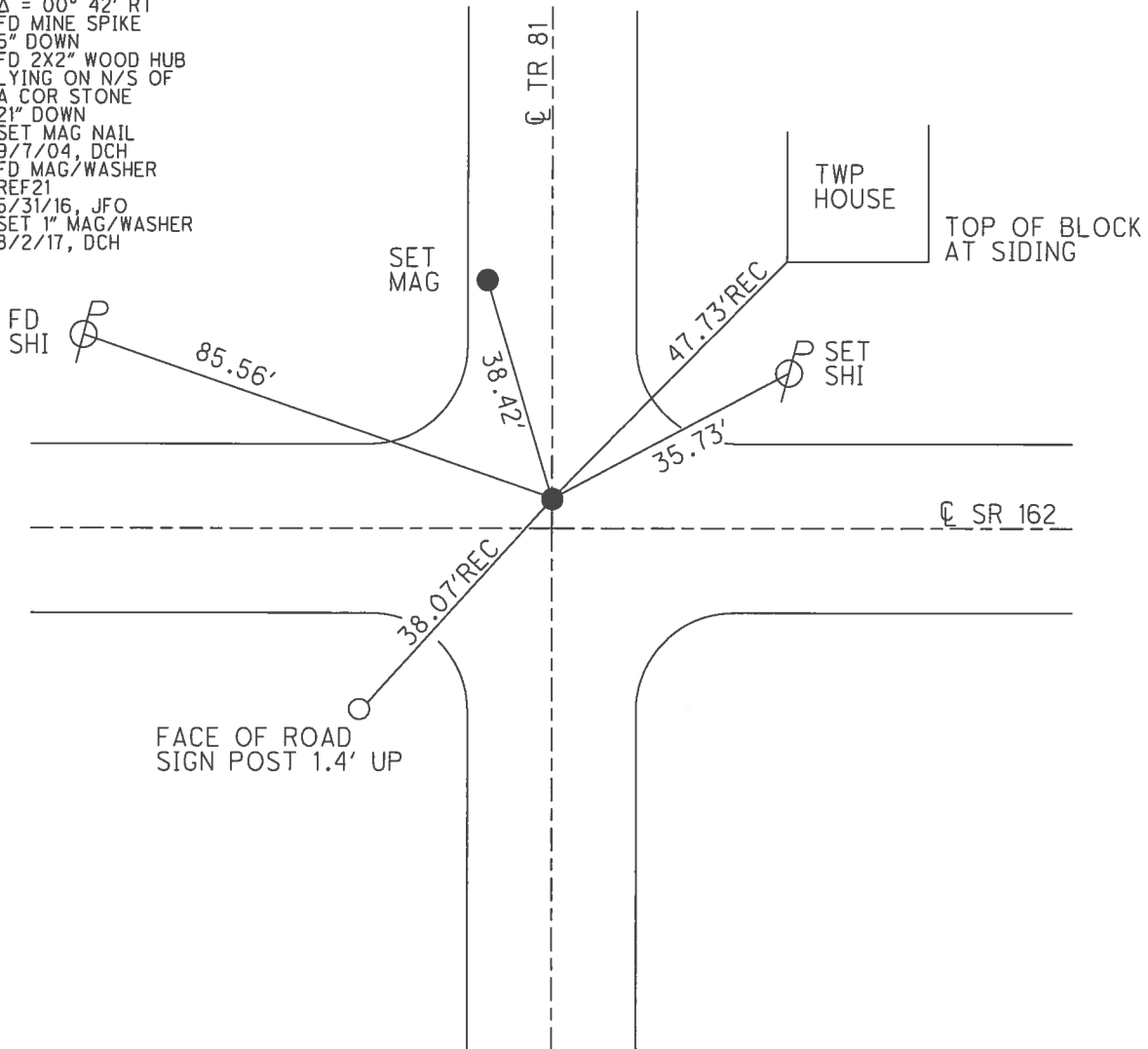
PERSONNEL \_\_\_\_\_ REFERENCE NO. 21 SHEET 23 OF 32  
 NOTES POORE \_\_\_\_\_ DATE 8/2/17 ROUTE SR 162  
 H.C. HOMAN \_\_\_\_\_ WEATHER SUNNY COUNTY SENECA  
 R.C. CARSON \_\_\_\_\_ TEMP. 75° TOWNSHIP REED  
 RHOADES \_\_\_\_\_ SECTION 16  
 T 2 N R 17 E

TYPE MONUMENT MAG/WASHER  
 ON SURFACE - ~~BELOW~~ ON  
 LEFT - ☉ PAV'T - ~~RIGHT~~ 4'  
 - TO - EDGE PAVEMENT  
 S.L.M. 322+30



GRID: NORTHING: 531410.747 EASTING: 1858279.137

RECORD: P.I.  
 $\Delta = 00^\circ 42' RT$   
 FD MINE SPIKE  
 5" DOWN  
 FD 2X2" WOOD HUB  
 LYING ON N/S OF  
 A COR STONE  
 21" DOWN  
 SET MAG NAIL  
 9/7/04, DCH  
 FD MAG/WASHER  
 REF21  
 5/31/16, JFO  
 SET 1" MAG/WASHER  
 8/2/17, DCH

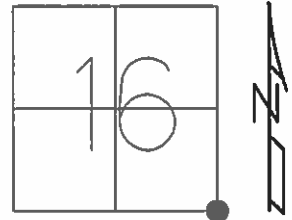


O.D.O.T. DISTRICT 2 SURVEY OFFICE (USE ONLY)

PERSONNEL \_\_\_\_\_ REFERENCE NO. 21 SHEET 23 OF 32

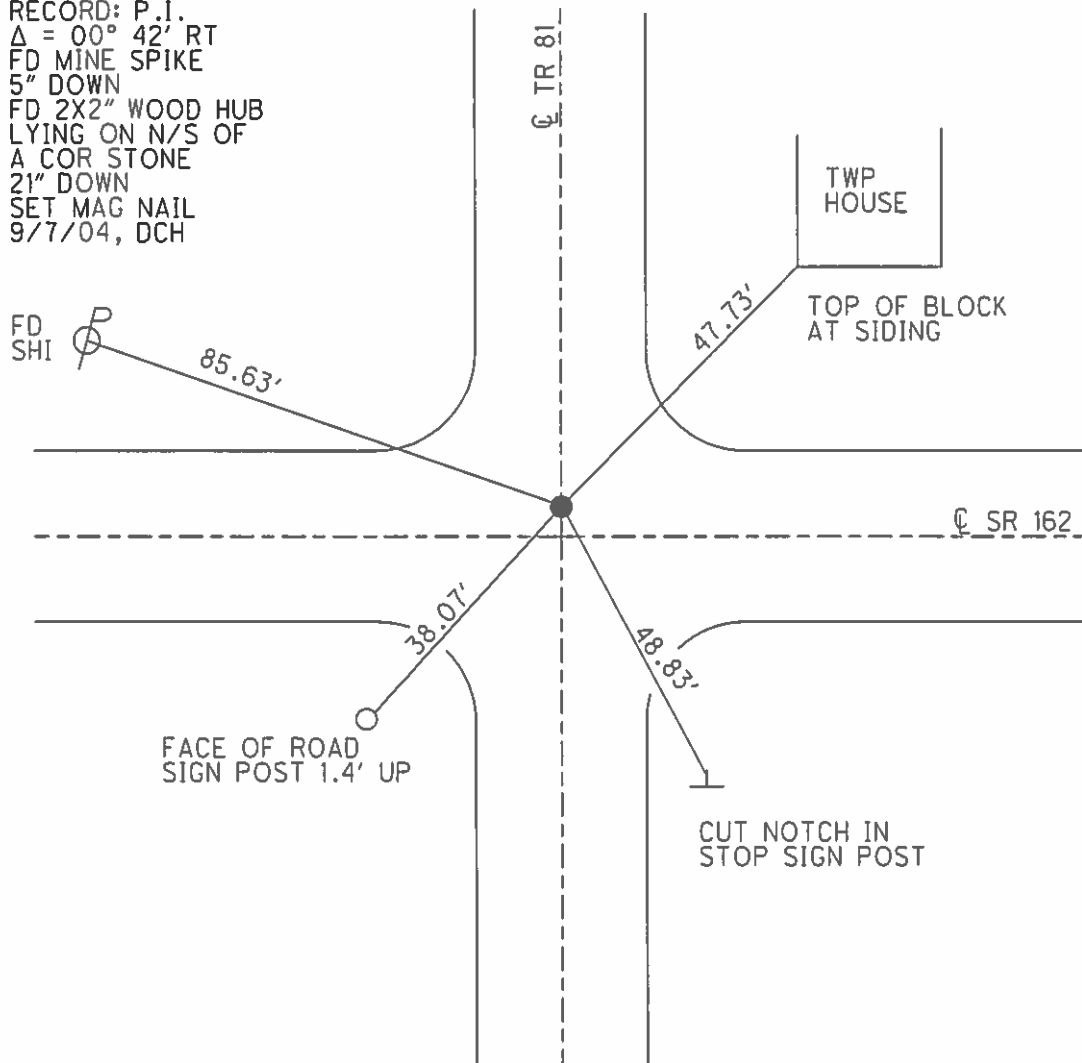
NOTES HOMAN DATE 7/14/04 ROUTE SR 162  
 H.C. BARNHISEL WEATHER SUNNY COUNTY SENECA  
 R.C. CANTERBURY TEMP. 70° TOWNSHIP REED  
 SECTION 16  
 T 2 N R 17 E

TYPE MONUMENT P.K./WASHER  
~~ON SURFACE~~ - BELOW 1"  
 LEFT - ☉ PAV'T - ~~RIGHT~~ 3'  
- TO - EDGE PAVEMENT  
 S.L.M. 322+30



GRID: NORTHING: \_\_\_\_\_ EASTING: \_\_\_\_\_

RECORD: P.I.  
 $\Delta = 00^\circ 42' RT$   
 FD MINE SPIKE  
 5" DOWN  
 FD 2X2" WOOD HUB  
 LYING ON N/S OF  
 A COR STONE  
 21" DOWN  
 SET MAG NAIL  
 9/7/04, DCH



O.D.O.T. DISTRICT 2 SURVEY OFFICE

PERSONNEL

REFERENCE NO. 21

SHEET 21 OF 30

NOTES HOMAN

DATE 7-14-04

ROUTE SR 162

H.C. BARNHISEL

WEATHER SUNNY

COUNTY SENECA

R.C. CANTERBURY

TEMP. 70°

TOWNSHIP REED

SECTION 16

T 2 N R 17 E

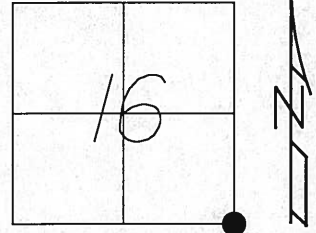
TYPE MONUMENT SEE BELOW

ON SURFACE - BELOW SEE BELOW

LEFT ~~- C PAVT - RIGHT~~ 3' LT

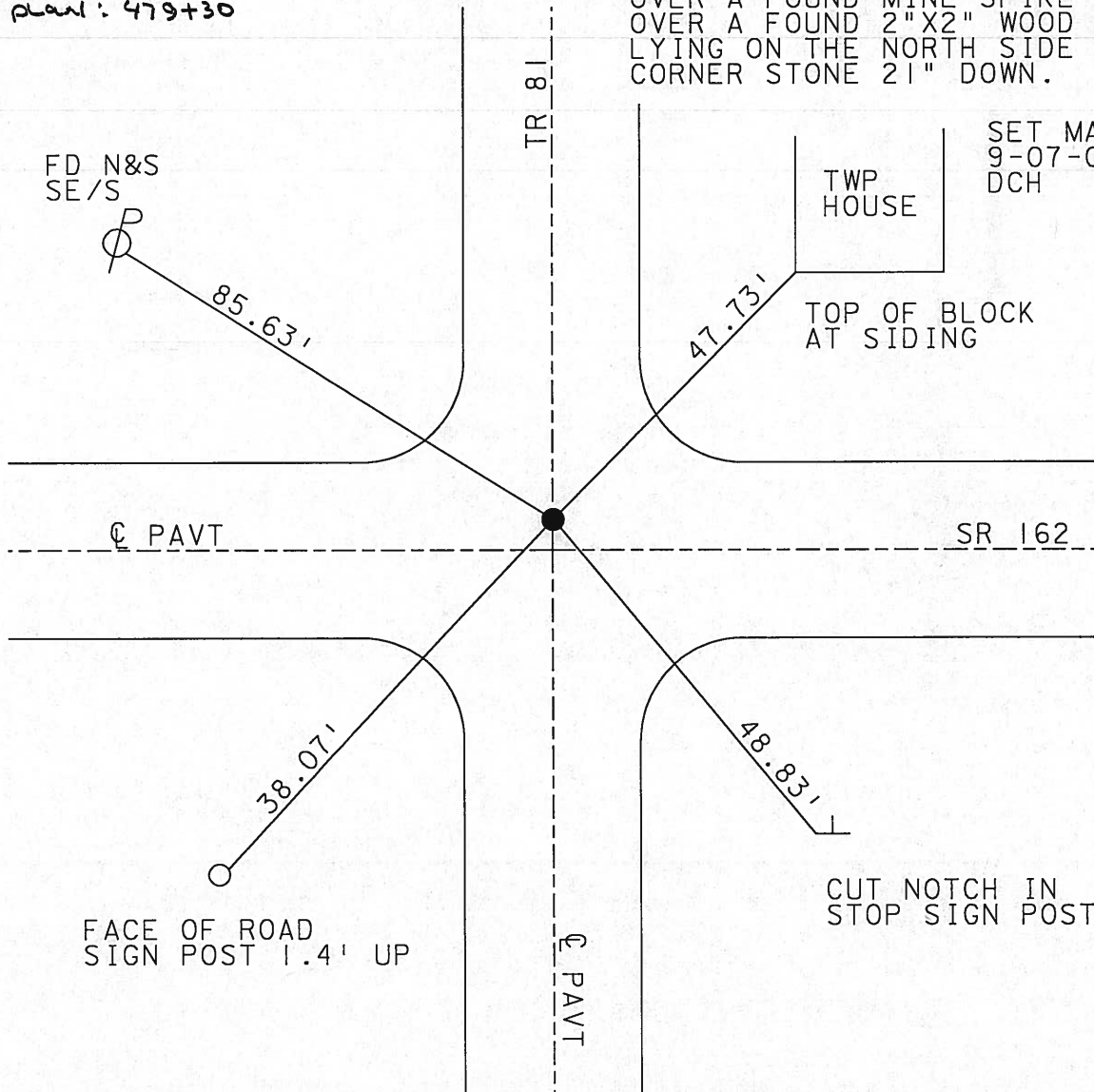
TO EDGE PAVEMENT

S.L.M. 322+30



1979 RECORD: PI DELTA = 00°-42' RT  
1947 plan: 479+30

2004 FOUND PK & WASHER 1 1/2" DOWN  
OVER A FOUND MINE SPIKE 5" DOWN  
OVER A FOUND 2" X 2" WOOD HUB  
LYING ON THE NORTH SIDE OF A  
CORNER STONE 21" DOWN.



SET MAG NAIL  
9-07-04  
DCH

OVER Hub of SPIKE Location. The "STONE" APPEARED TO BE "HIT"

# O.D.O.T. DISTRICT 2 SURVEY OFFICE

PERSONNEL

REFERENCE NO. 21

SHEET 21 OF 30

NOTES ~~Purple~~ Homan

H.C. ~~Barkour~~ Barnhisal

DATE ~~10-24-90~~ 7-14-04

ROUTE 162

R.C. ~~Geyman~~

WEATHER ~~cloudy~~ Windy

COUNTY Sen.

Canterbury

TEMP. 46° 70°

TOWNSHIP Reed

SECTION 15-16-21-22

T      R     

TYPE MONUMENT P.K. & Washer

ON SURFACE - BELOW PK AT top MINE Spk AT top R.R SPIKE  
 LEFT - & PAV'T. - RIGHT 3' LT. & ABOVE CORNER STONE

TO EDGE PAVEMENT 1947  
 S.L.M. 322 & 30 479+30 Plan

16	15
21	22

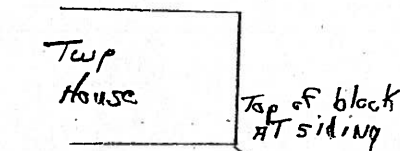


PI  $\Delta = 00^\circ 42' RT.$

Set Mag Nail on surface, over the hub, mine spike & PK location.

9-07-04

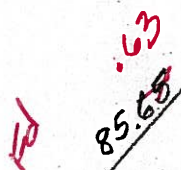
DCH



Fd PK & Washer 1 1/2" Down  
 Fd Mine Spike 5" Down  
 Fd Wood Hub 9" Down  
 These were in the same location

cut Notch in Stop sign

Twp. Rd 81



Rd sign Post 1.4' up

Set Mag Nails 2' NNW & 2' NE

Fd Stone 21" Down

Note. Distance from NNW Mag to Top Center of Stone is 2.30', Distance From NE to top Center of Stone 2.22' Hub was on the North side of High point

# O.D.O.T. DISTRICT 2 SURVEY OFFICE

PERSONNEL \_\_\_\_\_

REFERENCE NO. 21

SHEET 21 OF 30

NOTES Ripple

H.C. BARBOUR

DATE 10-24-90

ROUTE 162

R.C. Geyman

WEATHER cloudy Windy

COUNTY Sen.

TEMP. 46

TOWNSHIP Reed

SECTION 15-16-21-22

T \_\_\_\_\_ R \_\_\_\_\_

TYPE MONUMENT P.K. Washer

ON SURFACE - BELOW PK. at top mine Spk at top R.R spike

LEFT- & PAV'T. - RIGHT 3' LT. 1/2

ABOVE CORNER STAKE

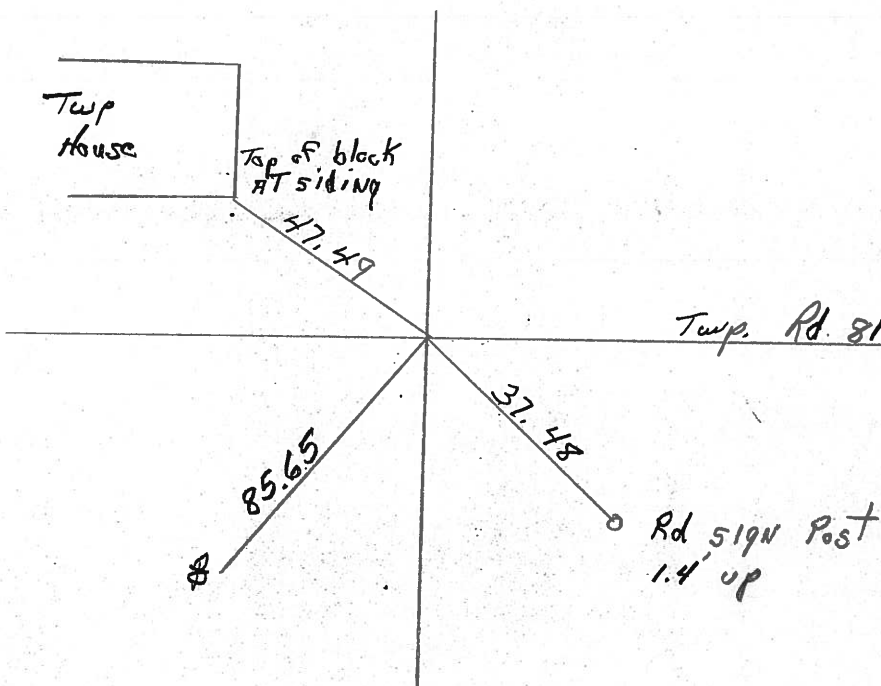
16	15
21	22



TO \_\_\_\_\_ EDGE PAVEMENT

S.L.M. 322 & 30

PI.  $\Delta = 00^{\circ} 42' RT.$





County Seneca S.R. #162

Date 12/20/83

Township Reed

Weather sunny

Section 15, 16, 21, 22

Temp. 18°

T2N, R1E

Personnel Cronin

16	15
21	22



#21

Ripke

Geyman



Twp.  
House

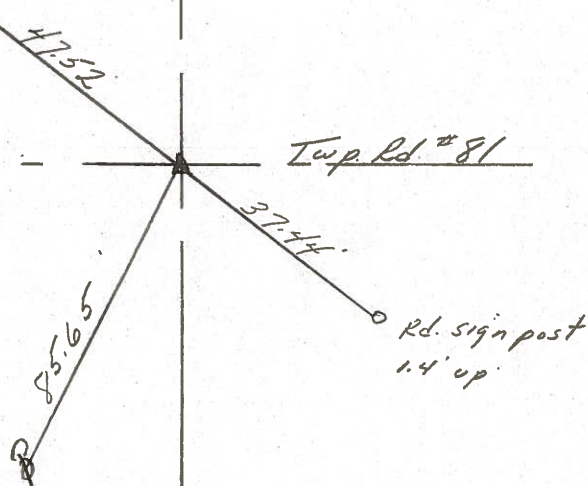
P.I.  $\Delta = 00^{\circ} 42' 21''$

479+30

Set P.K. & washer atop  
misc spike atop R.R. spike

3' Lt. & Point.

Corner Stone should be below



S.R. #162

County Seneca S.R. 162

Date 6-12-79

Township Reed

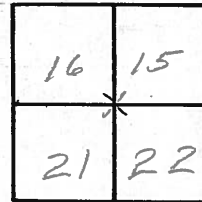
Weather Fair

Section 16, 15 & 21, 22

Temp. 72°

T2N, R17E

Personnel Schneider  
Mosser  
Barbour



(21)



S.R. # 162

Twp.  
House

P.I.  
479+30

R.R. spk. on  $\perp$   
small spk. on surface

$\Delta = 0^{\circ}42'RT.$

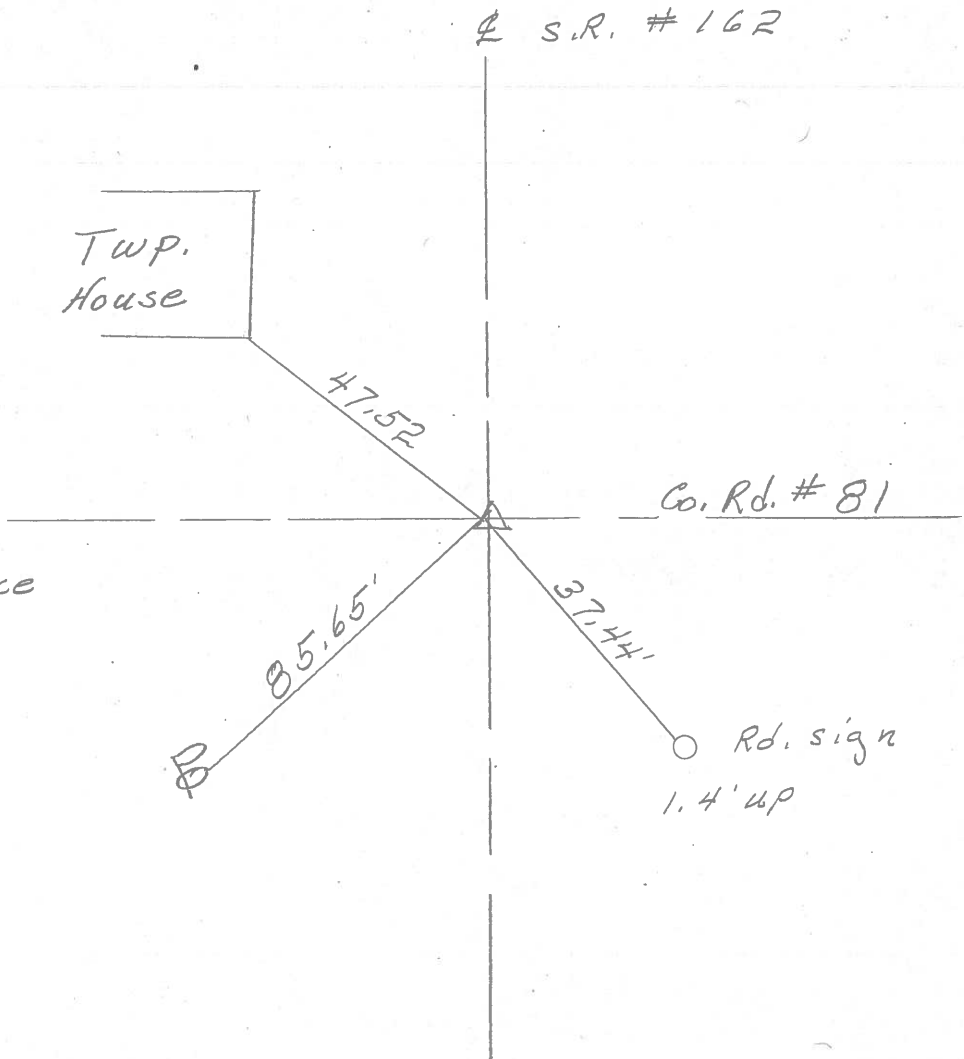
Co. Rd. # 81

85.65'

47.52

37.44'

Rd. sign  
1.4' up





S. H. 449 Sec M.

(20)

452 + 86.5 Cor. Stone on E

Fd 4-22-04

(21)

479 + 30 Cor Stone on E

Fd 4-11-04

(22)

506 + 10.33 Cor Stone on E

Fd 4-22-04

(23)

533 + 01.3 Cor Stone on E

Fd 3-31-04

