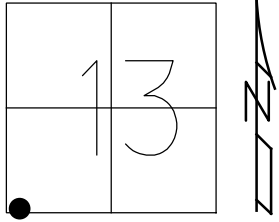


O.D.O.T. DISTRICT 2 SURVEY OFFICE (USE ONLY)

PERSONNEL \_\_\_\_\_ REFERENCE NO. 26 SHEET 28 OF 32  
 NOTES POORE DATE 8/2/17 ROUTE SR 162  
 H.C. HOMAN WEATHER SUNNY COUNTY SENECA  
 R.C. CARSON TEMP. 77° TOWNSHIP REED  
 \_\_\_\_\_ RHOADES SECTION 13  
 DWG BY RHOADES PID PAVETRAIN T 2 N R 17 E

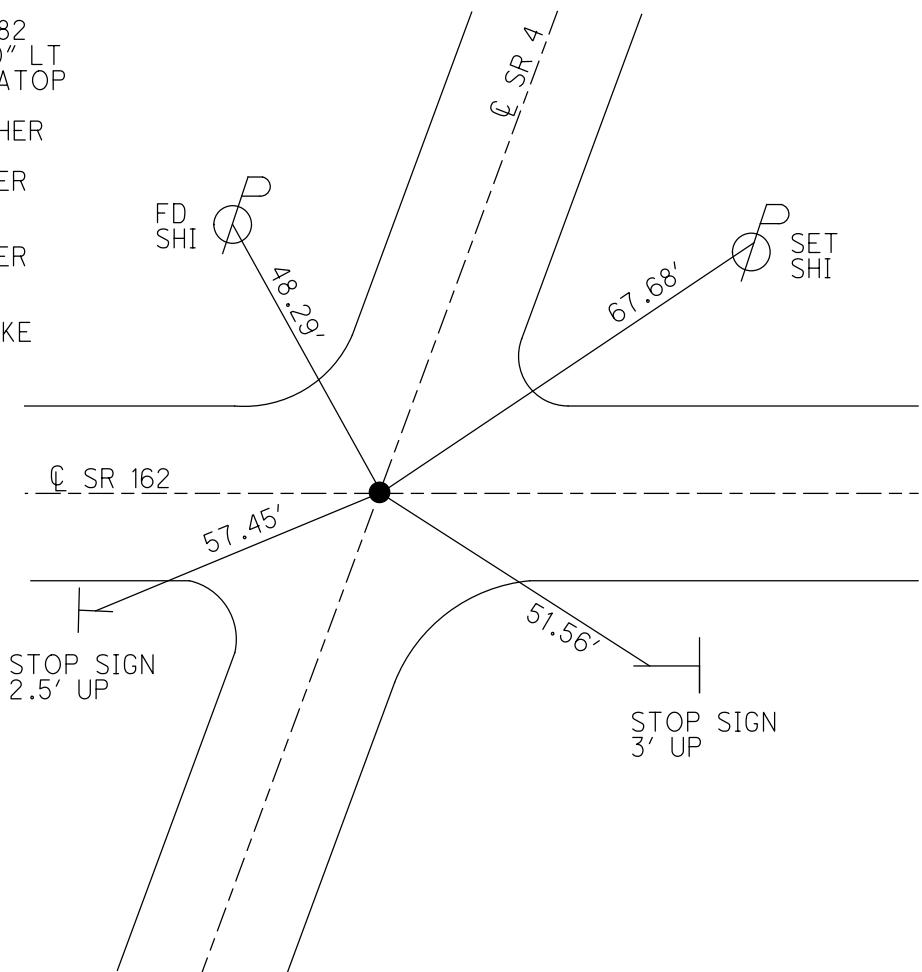
TYPE MONUMENT SM.R.R.SPIKE  
~~ON SURFACE~~ - BELOW 2"  
 OFFSET  $\odot$  PAVEMENT ON \_\_\_\_\_ LT : RT  
 - \_\_\_\_\_ TO - \_\_\_\_\_ EDGE PAVEMENT  
 STATION: 433+75



HORZ.DATUM: NAD83 2011 GEOID: 2012A  
 GRID: NORTHING: 531266.125 EASTING: 1869418.741

RECORD: P.I.  
 5/21/1987  
 STA. 506+20.82  
 $\Delta = 00^{\circ}05' 30''$  LT  
 P.K./WASHER ATOP  
 R.R.SPK.  
 SET P.K./WASHER  
 7/2/01, BWC  
 FD P.K./WASHER  
 SV13612  
 9/16/09 KPM  
 FD P.K./WASHER  
 REF20  
 3/12/13, SDC  
 FD SM.R.R.SPIKE  
 REF20  
 6/1/15, JFO  
 FD R.R.SPIKE  
 2" DOWN  
 REF26  
 5/31/16, JFO  
 8/19/19, JFO  
 1/20/23, JMR

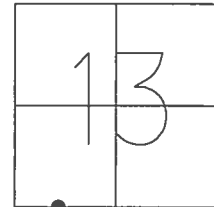
NOTE: SR 4 REF 20



O.D.O.T. DISTRICT 2 SURVEY OFFICE (USE ONLY)

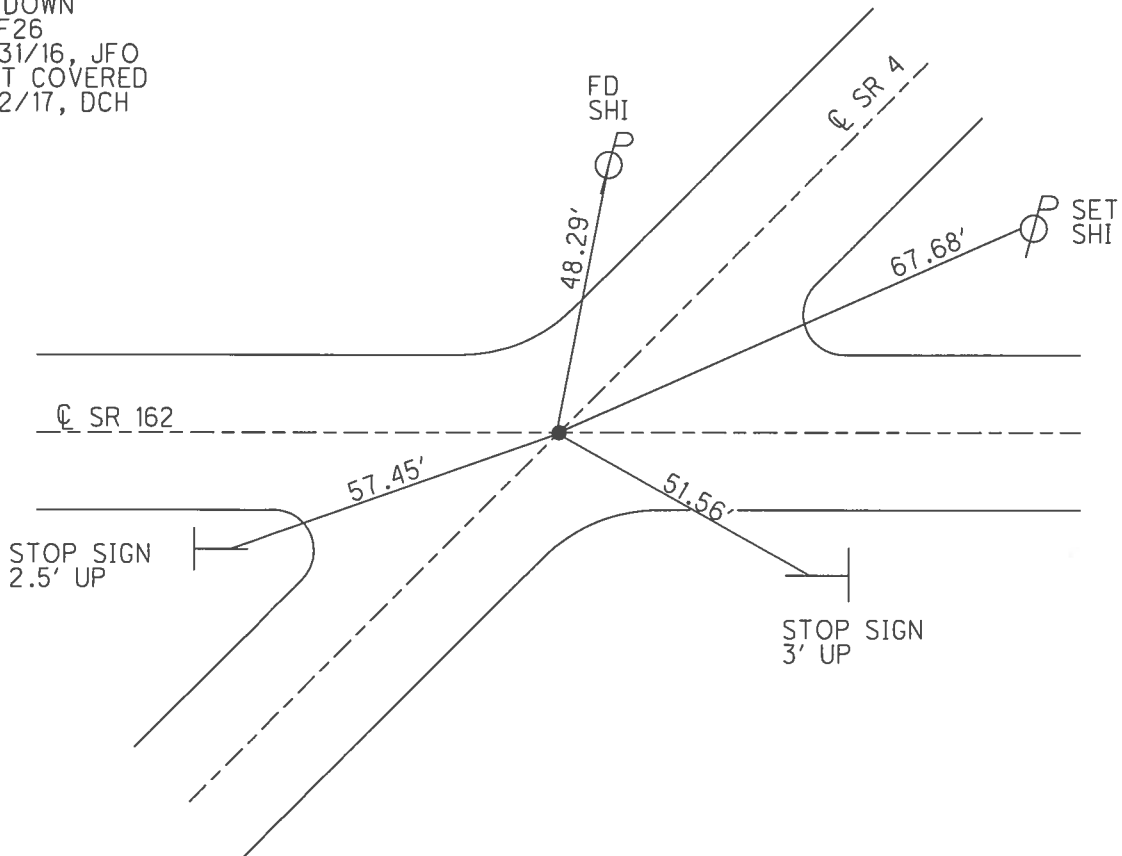
PERSONNEL \_\_\_\_\_ REFERENCE NO. 26 SHEET 28 OF 32  
 NOTES POORE \_\_\_\_\_ DATE 8/2/17 ROUTE SR 162  
 H.C. HOMAN \_\_\_\_\_ WEATHER SUNNY COUNTY SENECA  
 R.C. CARSON \_\_\_\_\_ TEMP. 77° TOWNSHIP REED  
 RHOADES \_\_\_\_\_ SECTION 13  
 T 2 N R 17 E

TYPE MONUMENT MAG/WASHER  
 ON SURFACE - ~~BELOW~~ ON \_\_\_\_\_  
 LEFT - ☉ PAV'T - RIGHT ON \_\_\_\_\_  
 - TO - EDGE PAVEMENT \_\_\_\_\_  
 S.L.M. 433+75



GRID: NORTHING: 531266.125 EASTING: 1869418.741

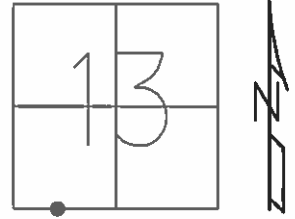
RECORD:  
 SET P.K. WASHER  
 7-02-01, BWC  
 FD R.R. SPIKE  
 2" DOWN  
 REF 26  
 5/31/16, JFO  
 NOT COVERED  
 8/2/17, DCH



**O.D.O.T. DISTRICT 2 SURVEY OFFICE (USE ONLY)**

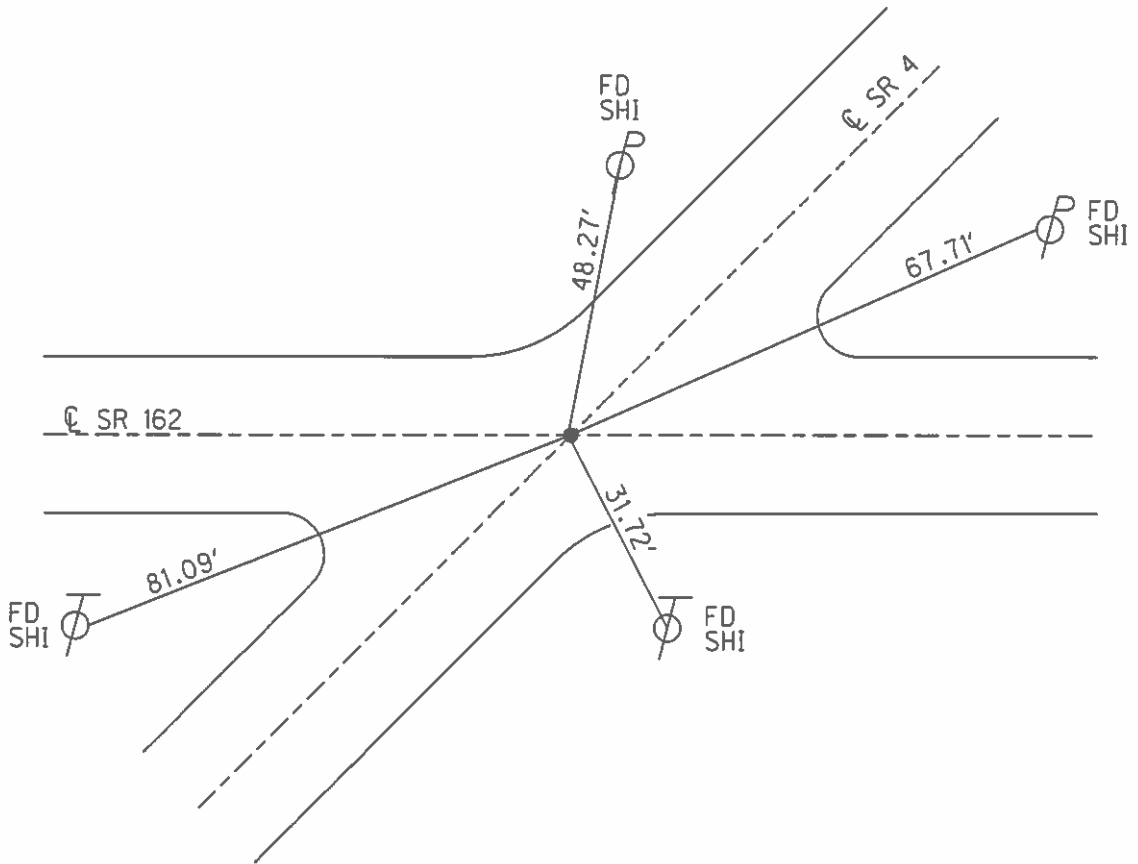
PERSONNEL	REFERENCE NO.	<u>26</u>	SHEET	<u>28</u>	OF	<u>32</u>
NOTES	CORDES	DATE	<u>5/30/01</u>	ROUTE	<u>SR 162</u>	
H.C.	<u>BROWN</u>	WEATHER	<u>SUNNY</u>	COUNTY	<u>SENECA</u>	
R.C.	<u>HOMAN</u>	TEMP.	<u>64°</u>	TOWNSHIP	<u>REED</u>	
				SECTION	<u>13</u>	
				T	<u>2</u>	N
				R	<u>17</u>	E

TYPE MONUMENT P.K./WASHER  
 ON SURFACE - ~~BELOW~~ ON  
 LEFT - ☉ PAV'T - RIGHT ON  
     TO      EDGE PAVEMENT  
 S.L.M. 434+12 ±



GRID: NORTHING: \_\_\_\_\_ EASTING: \_\_\_\_\_

RECORD:  
 SET P.K.WASHER  
 7-02-01, BWC



O.D.O.T. DISTRICT 2 SURVEY OFFICE

PERSONNEL

REFERENCE NO. 26

SHEET 26 OF 30

NOTES CORDES

DATE 5-30-01

ROUTE SR 162

H.C. BROWN

WEATHER SUNNY

COUNTY SENECA

R.C. HOMAN

TEMP. 64°

TOWNSHIP REED

SECTION 13

T 2 N R 17 E

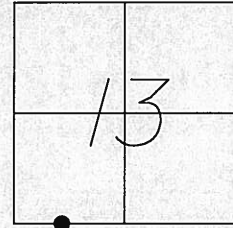
TYPE MONUMENT PK & WASHER

ON SURFACE ~~BELOW~~ ON

~~LEFT~~ - Q PAVT - ~~RIGHT~~ ON

TO EDGE PAVEMENT

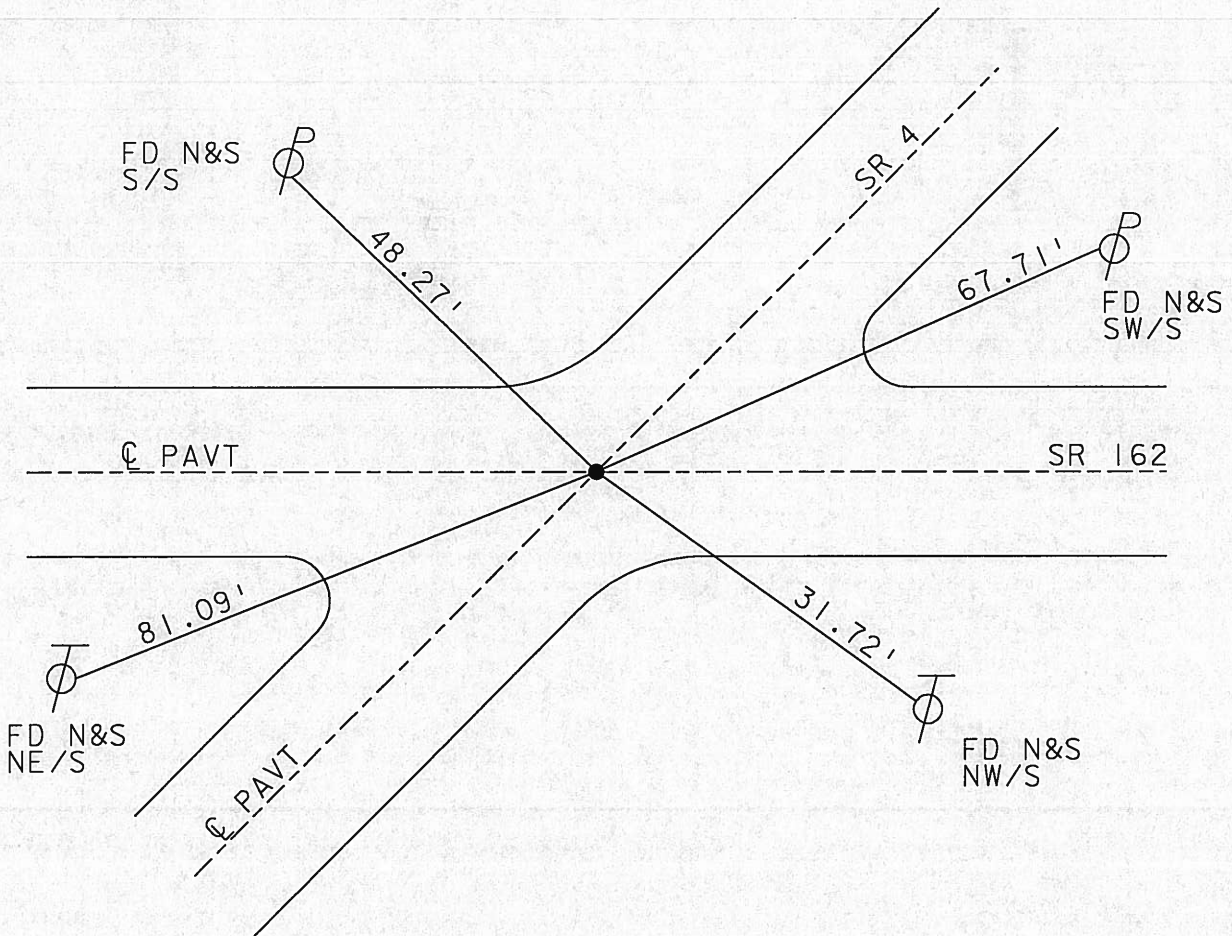
S.L.M. \_\_\_\_\_



1979

RECORD: DOUBTFUL IF POINT IS  
CORRECT FOR SR 162  
J.L.C. *Ronin*

SET PK & WASHER  
7-02-01  
BWC



# O.D.O.T. DISTRICT 2 SURVEY OFFICE

PERSONNEL \_\_\_\_\_

REFERENCE NO. 26

SHEET 26 OF 30

NOTES Ripple

H.C. BARBOUR

R.C. Geyman

DATE 10-24-90

WEATHER \_\_\_\_\_

TEMP. \_\_\_\_\_

ROUTE 162

COUNTY Sen

TOWNSHIP Rd

SECTION 13-24

T2 N R 17 E

TYPE MONUMENT R.R. spike on surface

ON SURFACE - BELOW \_\_\_\_\_

LEFT- & PAW'T. - RIGHT \_\_\_\_\_

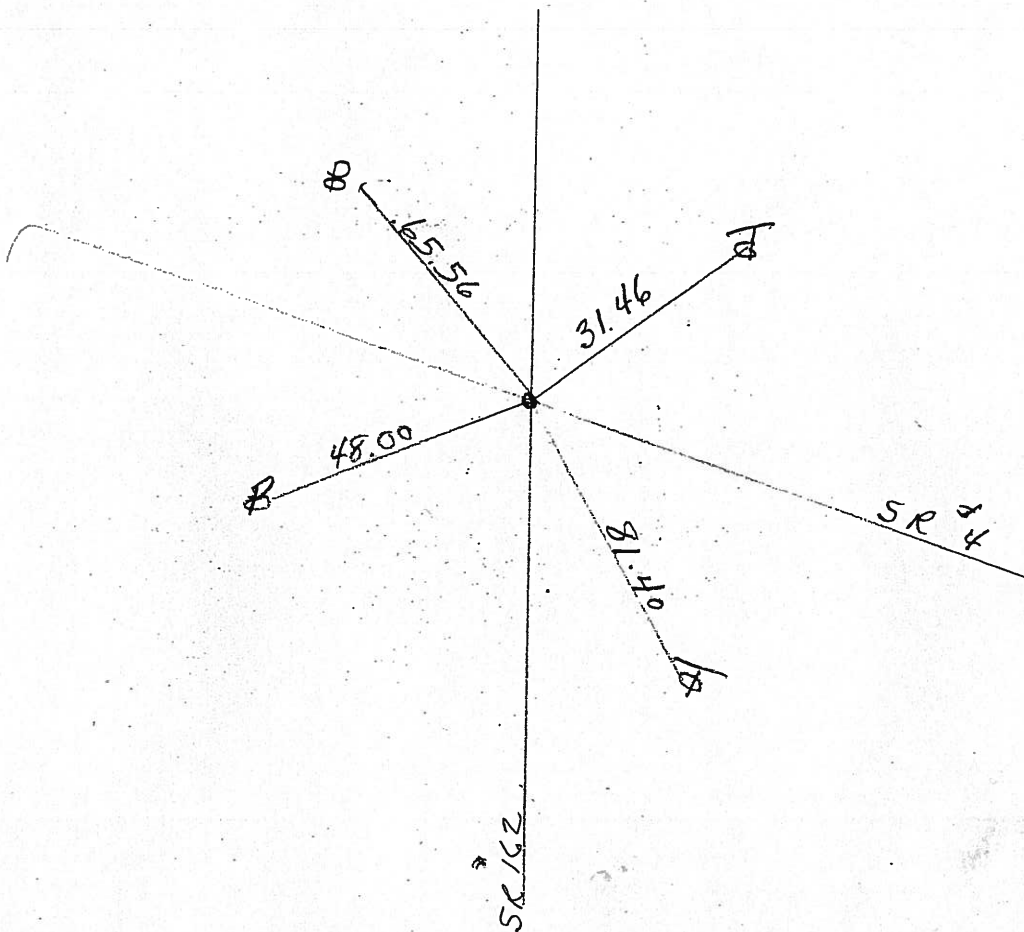
\_\_\_\_\_ TO \_\_\_\_\_ EDGE PAVEMENT

S.L.M. \_\_\_\_\_

14	13
23	24



Doubtful if point is ANY  
Good for SR 162  
J.L.S.



# O.D.O.T. DISTRICT 2 SURVEY OFFICE

PERSONNEL \_\_\_\_\_

REFERENCE NO. 26

SHEET 26 OF 30

NOTES Ripple

H.C. BARBOUR

R.C. Geyman

DATE 10-24-90

WEATHER \_\_\_\_\_

TEMP. \_\_\_\_\_

ROUTE 162

COUNTY Sen

TOWNSHIP Reed

SECTION 13-24

T2 N R17 E

TYPE MONUMENT RR spike on surface

ON SURFACE - BELOW \_\_\_\_\_

LEFT - ☉ PAV'T. - RIGHT \_\_\_\_\_

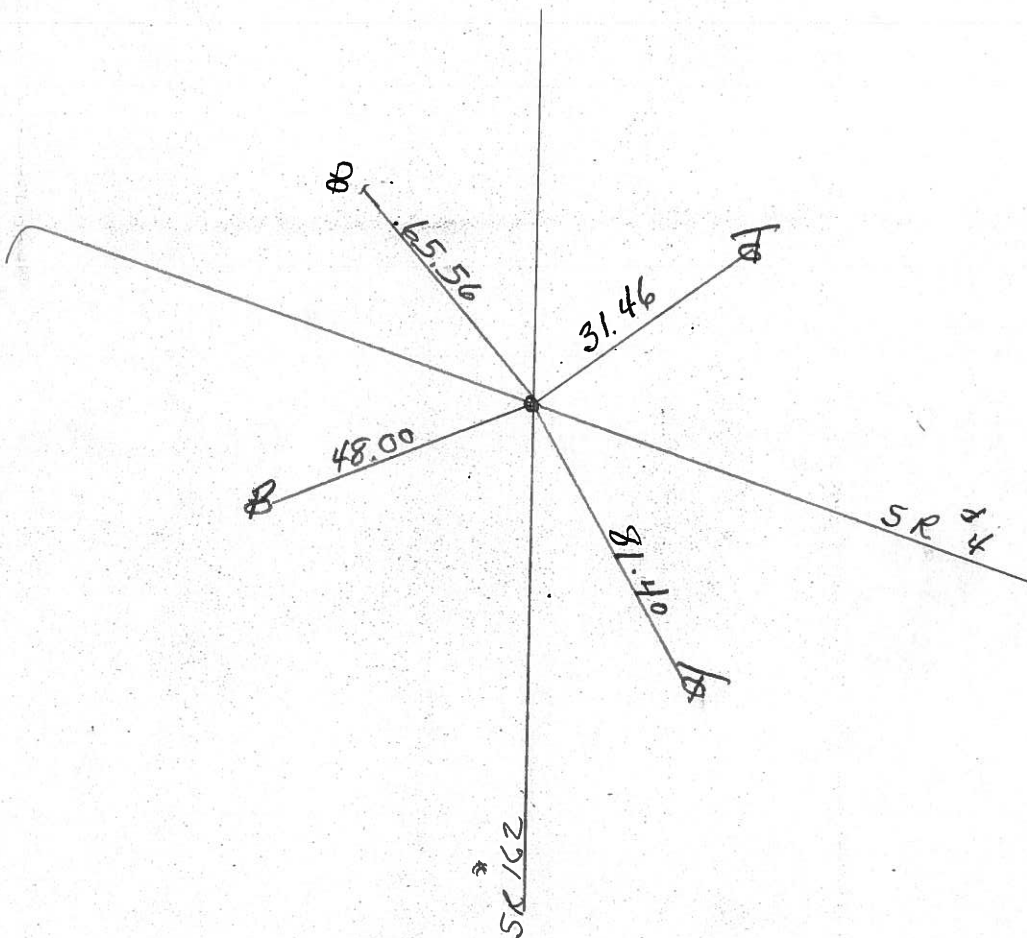
TO \_\_\_\_\_ EDGE PAVEMENT

S.L.M. \_\_\_\_\_

14	13
23	24



Doubtful if point is any  
Good for SR 162  
J.L.C.



County Seneca S.R. #162

Date 1/09/84

Township Reed

Weather overcast

Section 13 E 24

Temp. 22°

T2N, R17E

Personnel Cronin

Lipke

Geyman

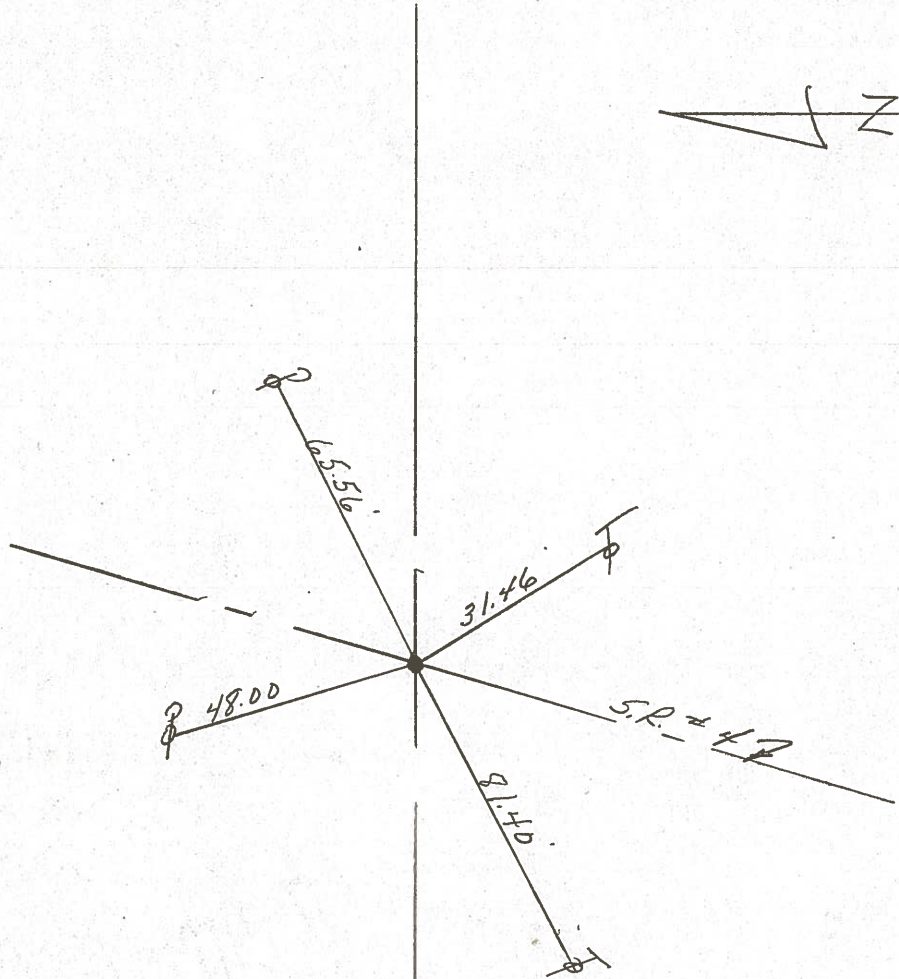
Barbour

#26

14	13
23	24



P.O.T.  
590 + 69.40  
 Fd. R.R. spike on  
 surface. Doubtful if  
 point is any good for S.R. #162



S.R. #162

County Seneca S.R. 162

Date 6-12-79

Township Reed

Weather Fair

Section 13 & 24

Temp. 72°

T2N, R11E

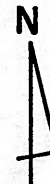
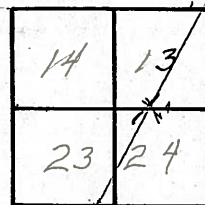
Personnel Schneider

Mosser

Barbour

\_\_\_\_\_

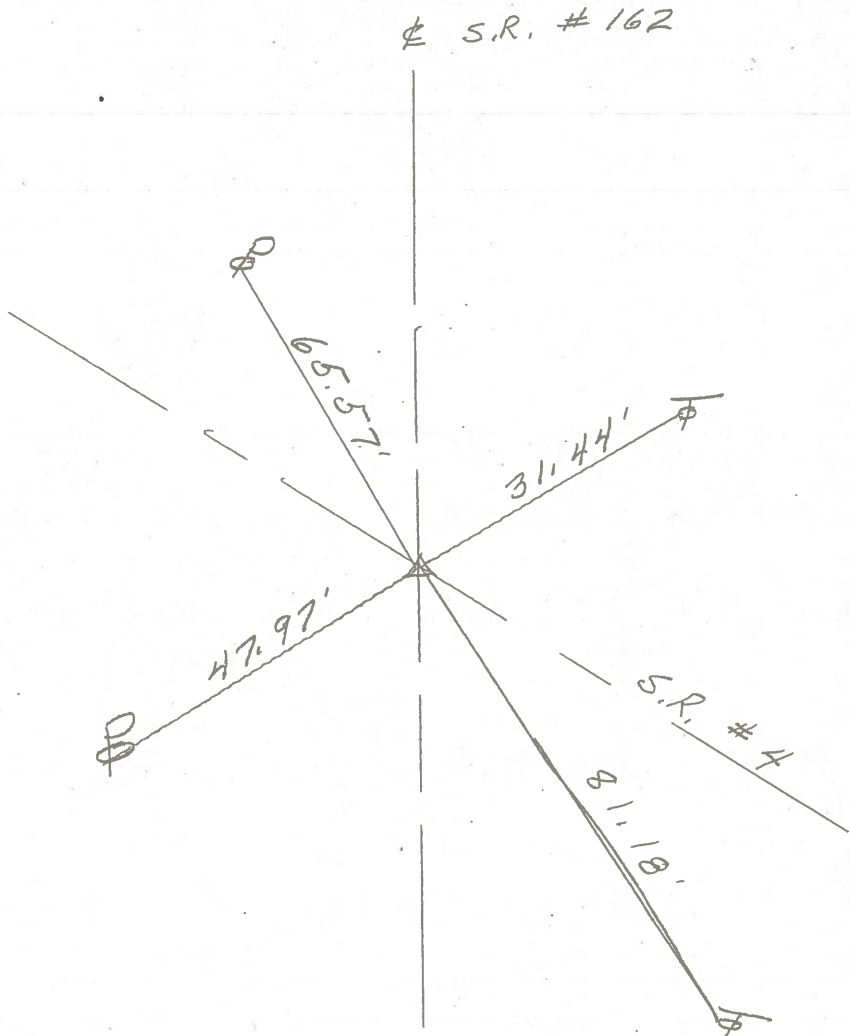
\_\_\_\_\_



26



590+69.4  
R.R. spk. on surface





S.H. 449 Sec. 17.

6.

(24)

559 + 00

(23)

R.R. Spike on E

(25)

567 + 00

(24)

R.R. Spike on E

(26)

590 + 62.9

(25)

Nail + Shiner on E

Twp Bldg.

N.E. 89.5'

Old Post Office

N.E. 29.1'

$\Delta = 1^{\circ} 03' R$

N.W. 28.7'

20" Elm Shiner

N.E. 39.2'

12" Cedar Shiner

$\Delta = 0^{\circ} 0'$

18" Buckeye Shiner

N.W. 44.1'

Power Pole Shiner

Route #7

N.S. 66.85'

D.T. Pole Shiner

N.W. 48.53'

P. Pole Shiner

45

47

51

53