

O.D.O.T. DISTRICT 2 SURVEY OFFICE (USE ONLY)

PERSONNEL \_\_\_\_\_ REFERENCE NO. 27 SHEET 29 OF 32

NOTES POORE \_\_\_\_\_ DATE 8/2/17 ROUTE SR 162  
 H.C. HOMAN \_\_\_\_\_ WEATHER SUNNY COUNTY SENECA  
 R.C. CARSON \_\_\_\_\_ TEMP. 77° TOWNSHIP REED  
 RHOADES \_\_\_\_\_ SECTION 13  
 T 2 N R 17 E

TYPE MONUMENT \_\_\_\_\_ MAG/WASHER \_\_\_\_\_

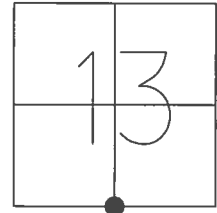
ON SURFACE - ~~BELOW~~ ON \_\_\_\_\_

LEFT -  $\odot$  PAV'T - RIGHT ON \_\_\_\_\_

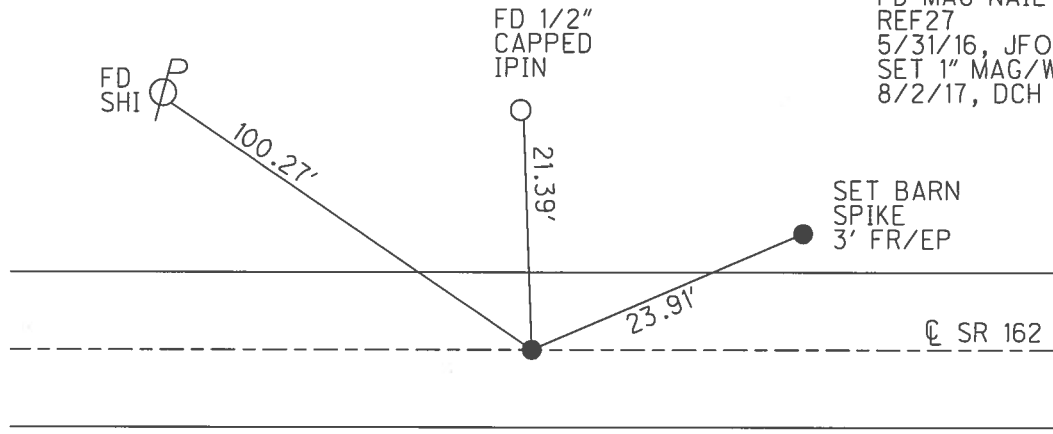
\_\_\_\_\_ TO \_\_\_\_\_ EDGE PAVEMENT

S.L.M. 454+27

GRID: NORTHING: 531222.680 EASTING: 1871473.820



RECORD:  
 FR R.R. SPIKE  
 10" DOWN  
 7/14/01, DCH  
 SET MAG NAIL  
 9/7/04, DCH  
 FD MAG NAIL  
 REF27  
 5/31/16, JFO  
 SET 1" MAG/WASHER  
 8/2/17, DCH



O.D.O.T. DISTRICT 2 SURVEY OFFICE (USE ONLY)

PERSONNEL \_\_\_\_\_ REFERENCE NO. 27 SHEET 29 OF 32  
NOTES HOMAN \_\_\_\_\_ DATE 7/14/04 ROUTE SR 162  
H.C. BARNHEISEL \_\_\_\_\_ WEATHER CLOUDY COUNTY SENECA  
R.C. CANTERBURY \_\_\_\_\_ TEMP. 70° TOWNSHIP REED  
SECTION 13  
T 2 N R 17 E

TYPE MONUMENT R.R.SPIKE

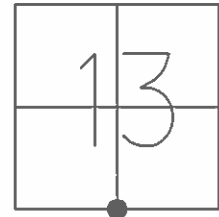
~~ON SURFACE~~ - BELOW 10"

LEFT - ☉ PAV'T - RIGHT ON

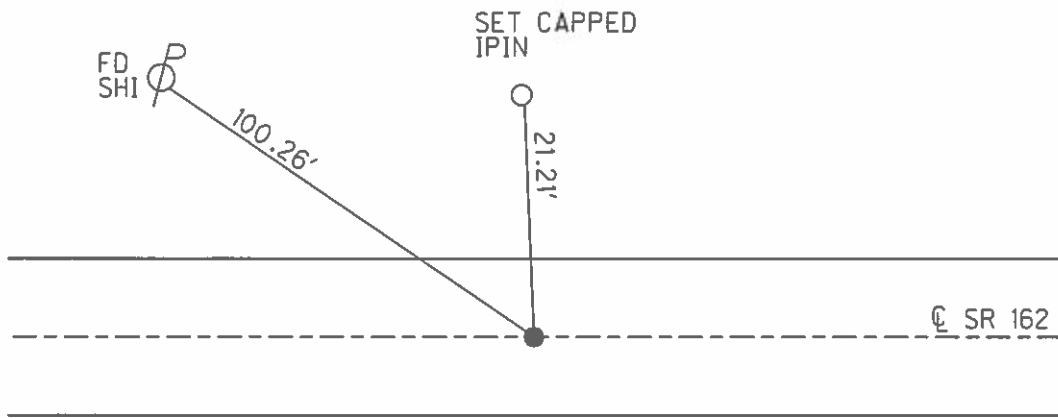
- TO - EDGE PAVEMENT

S.L.M. 454+27

GRID: NORTHING: \_\_\_\_\_ EASTING: \_\_\_\_\_



RECORD:  
SET P.K.WASHER  
7-02-01, BWC



O.D.O.T. DISTRICT 2 SURVEY OFFICE

PERSONNEL

REFERENCE NO. 27

SHEET 27 OF 30

NOTES HOMAN

DATE 7-14-04

ROUTE SR 162

H.C. BARNHISEL

WEATHER CLOUDY

COUNTY SENECA

R.C. CANTERBURY

TEMP. 70°

TOWNSHIP REED

SECTION 13

T 2 N R 17 E

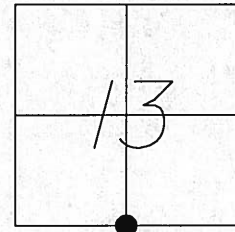
TYPE MONUMENT RR SPIKE

~~ON SURFACE~~ - BELOW 10"

~~LEFT~~ - Q PAV'T - ~~RIGHT~~ ON

TO EDGE PAVEMENT

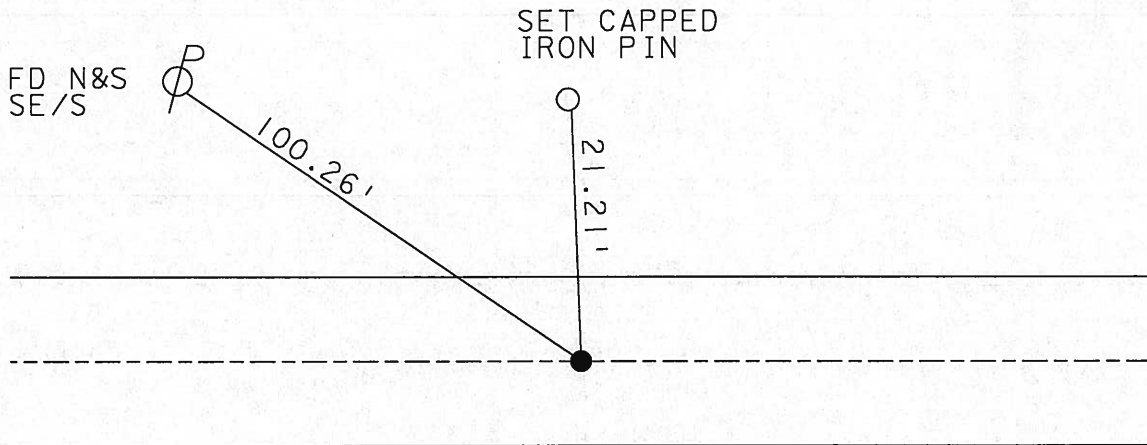
S.L.M. 454+27



1979

RECORD: DOUBTFUL IF POINT WAS  
CORRECT IN THE FIRST PLACE  
J.L. Cronin

SET MAG NAIL  
9-07-04  
DCH



O.D.O.T. DISTRICT 2 SURVEY OFFICE

PERSONNEL

REFERENCE NO. 27

SHEET 27 OF 30

NOTES Apple Homan

H.C. Barkhous Barnhisel

DATE 7-14-04  
~~10-24-90~~

ROUTE 162

R.G. Gayman

WEATHER Cloudy

COUNTY Sen.

Canterbury

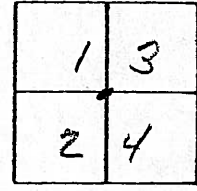
TEMP. 70°

TOWNSHIP Reed

SECTION 13-24

T. 2 N R. 17 E

TYPE MONUMENT Did Not Locate  
ON SURFACE - BELOW R/R spt 6" below surface  
LEFT- & PAV'T. - RIGHT on E  
TO EDGE PAVEMENT  
S.L.M. 454 & 27 ✓



Doubtful if Point was good  
in first place  
J.L.C.

Hub &  
Tack set

Set Capped  
Iron Pin

Hub & Tack  
Set

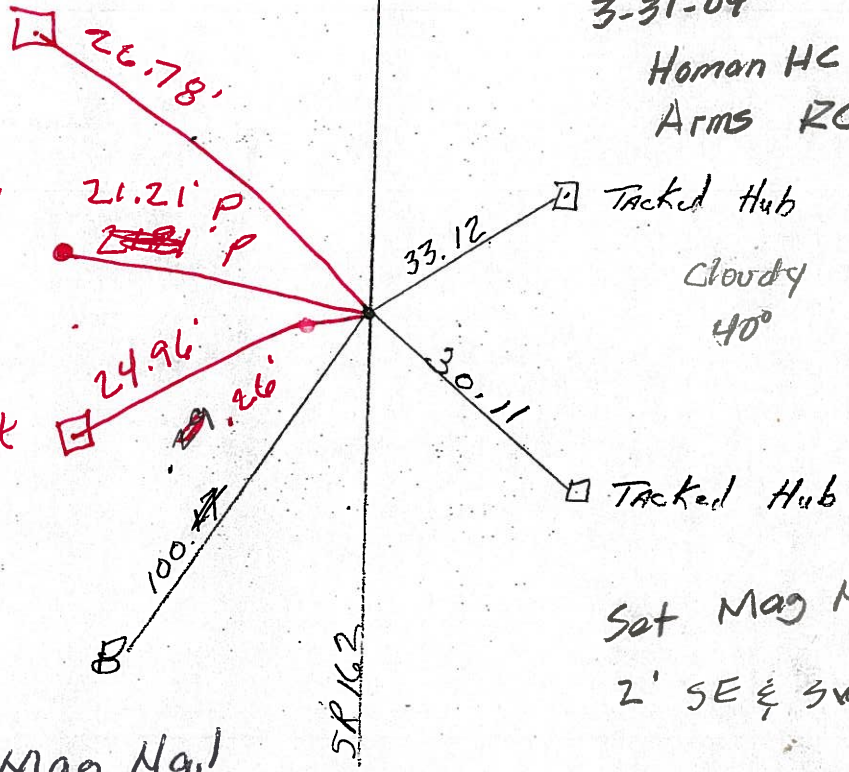
Set Mag Nail  
9-07-04  
DCH



Fd RR Spike  
10" Down  
3-31-04  
Homan HC & Notes  
Arms RC

Cloudy  
40°

Set Mag Nails  
2' SE & SW



O.D.O.T. DISTRICT 2 SURVEY OFFICE

PERSONNEL

REFERENCE NO. 27

SHEET 27 OF 30

NOTES Ripple

H.C. BARbour

DATE 10-24-90

ROUTE 162

R.C. GEYMAN

WEATHER \_\_\_\_\_

COUNTY Sen.

TEMP. \_\_\_\_\_

TOWNSHIP Reed

SECTION 13-24

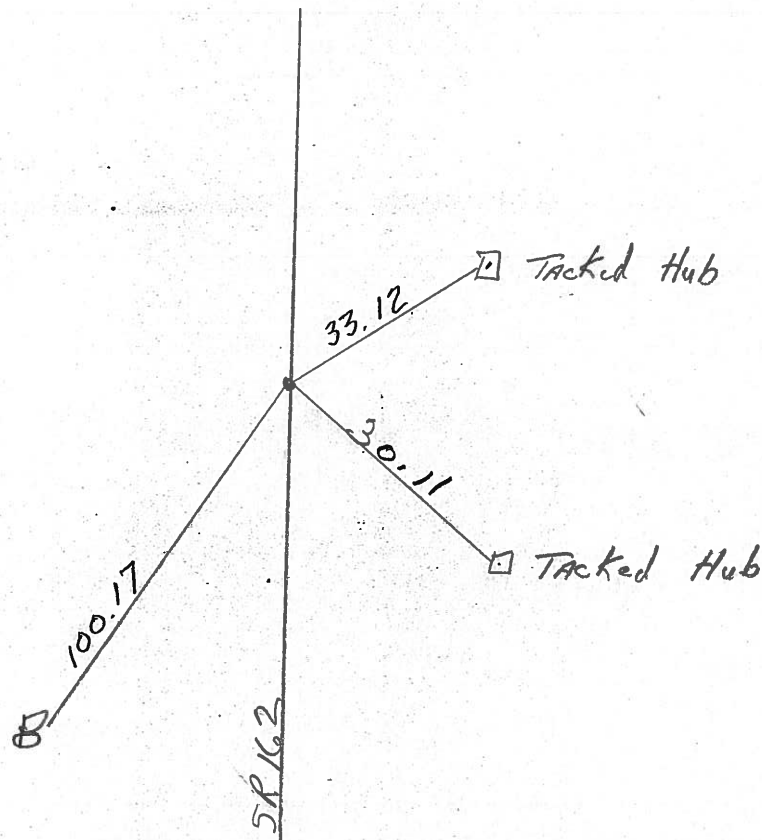
T 2 N R 17 E

TYPE MONUMENT Did Not Locate  
 ON SURFACE - BELOW R/R spt 6" below surface  
 LEFT- & PAV'T. - RIGHT \_\_\_\_\_  
 \_\_\_\_\_ TO \_\_\_\_\_ EDGE PAVEMENT  
 S.L.M. 454 & 27

1	3
2	4



*Doubtful if Point was good  
 in first place  
 J.L.C.*



County Seneca S.R. #162

Date 1/09/83

Township Reed

Weather overcast

Section 13 E 24

Temp. 22°

T2N, R17E

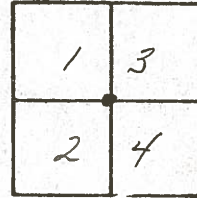
Personnel Cronin

Ripple

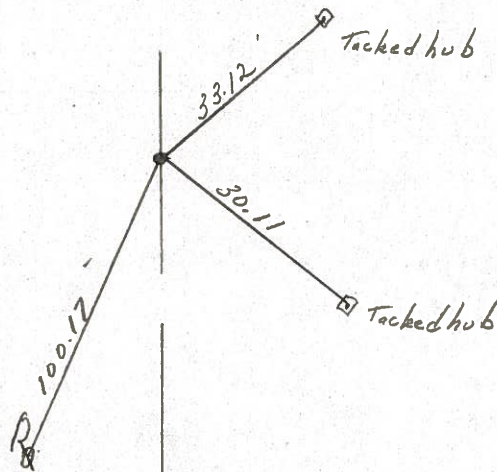
Geyman

Barbour

#27



P.O.T.  
611+24  
Fd. RR spike 6" below  
surface. - Doubtful if point  
was good in the first place



S.R. #162

County Seneca S.R. 162

Date 6-12-79

Township Reed

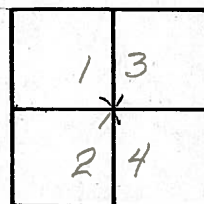
Weather Fair

Section 13 & 24

Temp. 72°

T<sub>2</sub>N, R<sub>12</sub>E

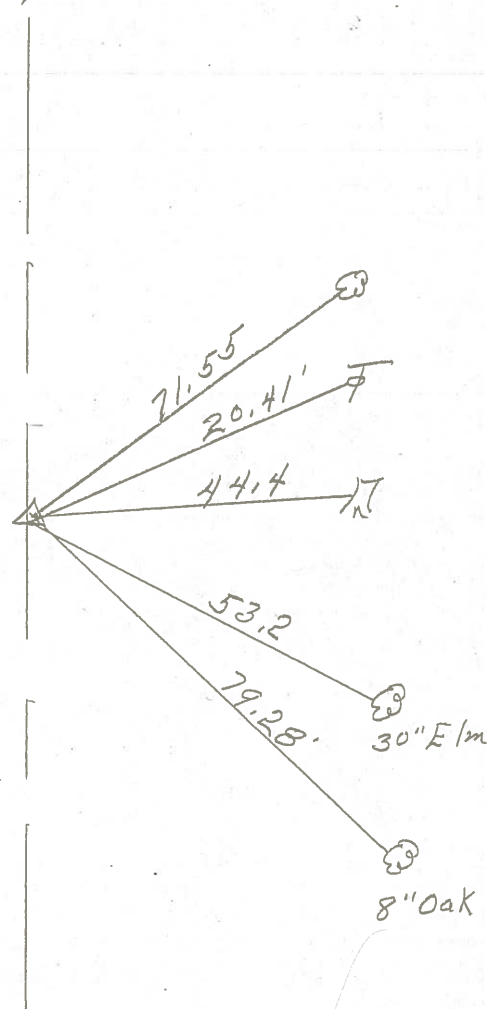
Personnel Schneider  
Mosser  
Barbour



27



⊕ S.R. # 162



6 11 + 24  
R.R. spk. on k

Δ = 0° 0'

dug for stone 4-11-60

did not find

612.154

(27)

45 611 + 27

454 + 27

605 + (28)

627 + 00

469 + 90

4

(29)

637 + 31.7

482 + 07

5

(30)

5: 659 + 73.5

S.H. 449 Sec N

(26)

Dug for stone did not locate

Set R.R. Spike on  $\phi$

FD 3-31-04  
DCH

(27)

Solid Iron Pin on  $\phi$

FD 3-30-04  
DCH

(28)

Dug for Stone Could not

locate set R.R. Spike on  $\phi$

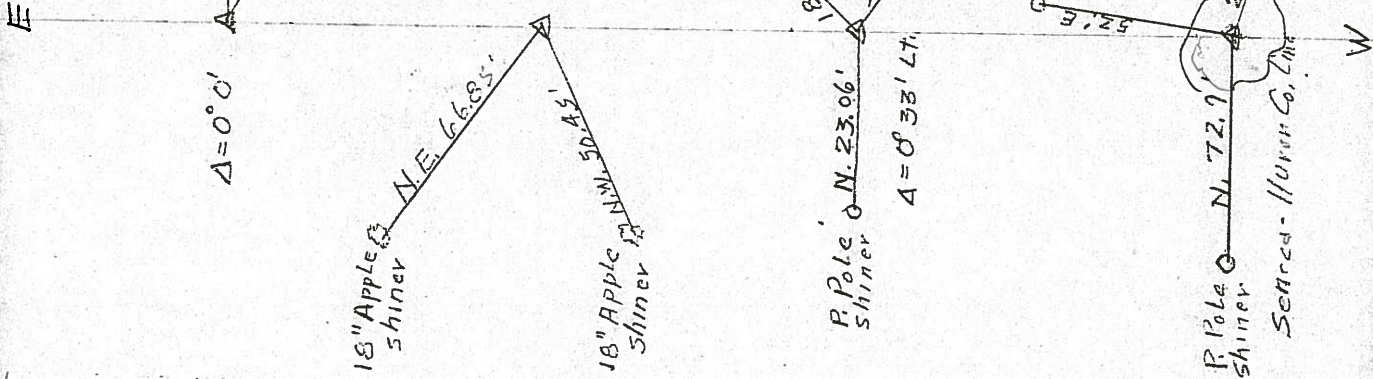
FD 3-30-04  
DCH

(29)

End of Project Seneca-Huron Co.

line

7. 9.



lines in apple

shiner in LC

shiner in LC

shiner in LC

shiner in Pole

W