

O.D.O.T. DISTRICT 2 SURVEY OFFICE (USE ONLY)

PERSONNEL

REFERENCE NO. 29

SHEET 31 OF 32

NOTES MILLER

DATE 12/28/23

ROUTE SR 162

H.C. RHOADES

WEATHER RAIN

COUNTY SENECA

R.C. MILLER

TEMP. 44°

TOWNSHIP REED

DWG BY RHOADES

PID PAVING TRAIN

SECTION 13

T 2 N R 17 E

TYPE MONUMENT MAG/WASHER

ON SURFACE - BELOW ON

OFFSET  $\text{C}$  PAVEMENT 1' LT : RT

- TO - EDGE PAVEMENT

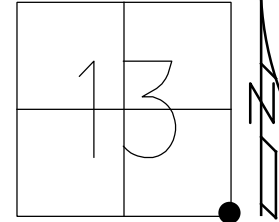
STATION: 482+07

HORZ.DATUM: NAD83 2011

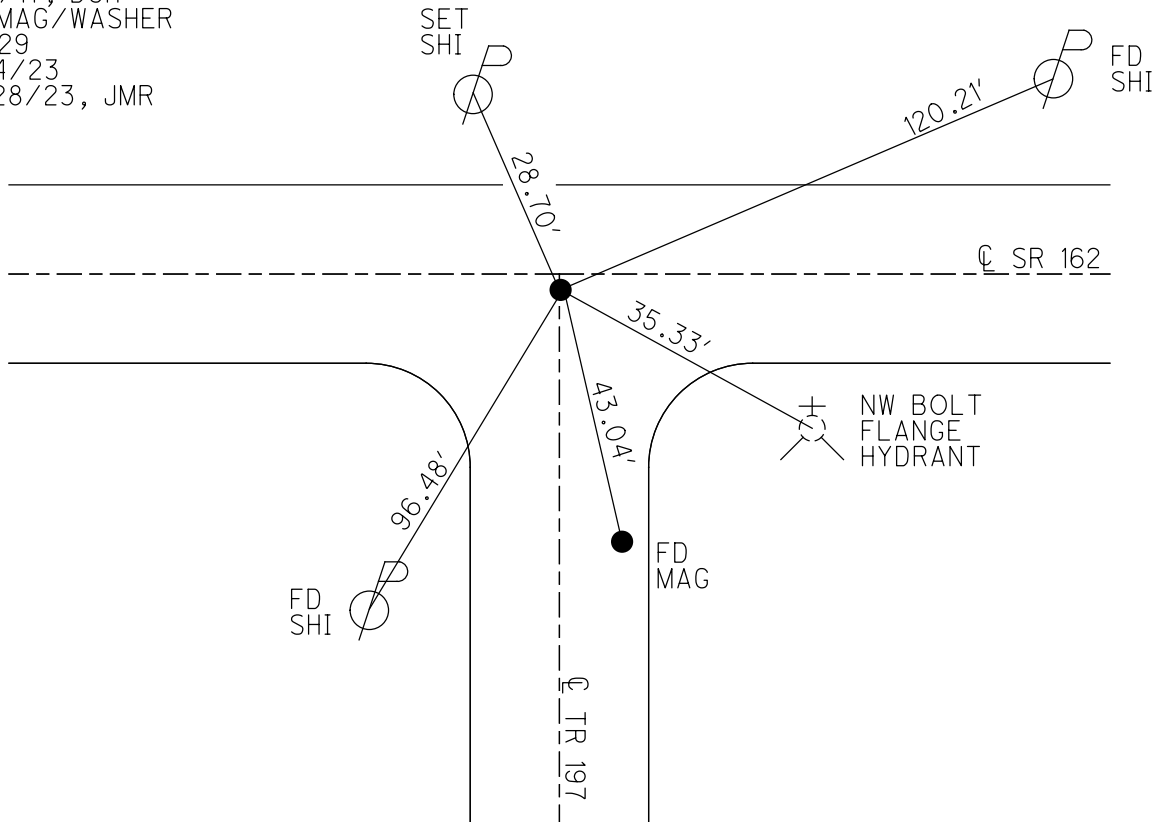
GEOID: NAVD88 2018

GRID: NORTHING: 531181.406

EASTING: 1874284.448



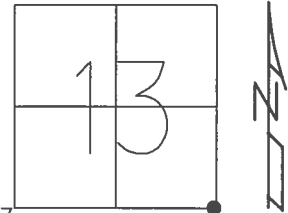
RECORD: P.I.  
 $\Delta = 00^{\circ} 33' \text{ LT}$   
 SET MAG NAIL  
 9/7/04, DCH  
 FD MAG NAIL  
 REF29  
 5/31/16, JFO  
 SET MAG/WASHER  
 8/2/17, DCH  
 FD MAG/WASHER  
 REF29  
 9/14/23  
 12/28/23, JMR



O.D.O.T. DISTRICT 2 SURVEY OFFICE (USE ONLY)

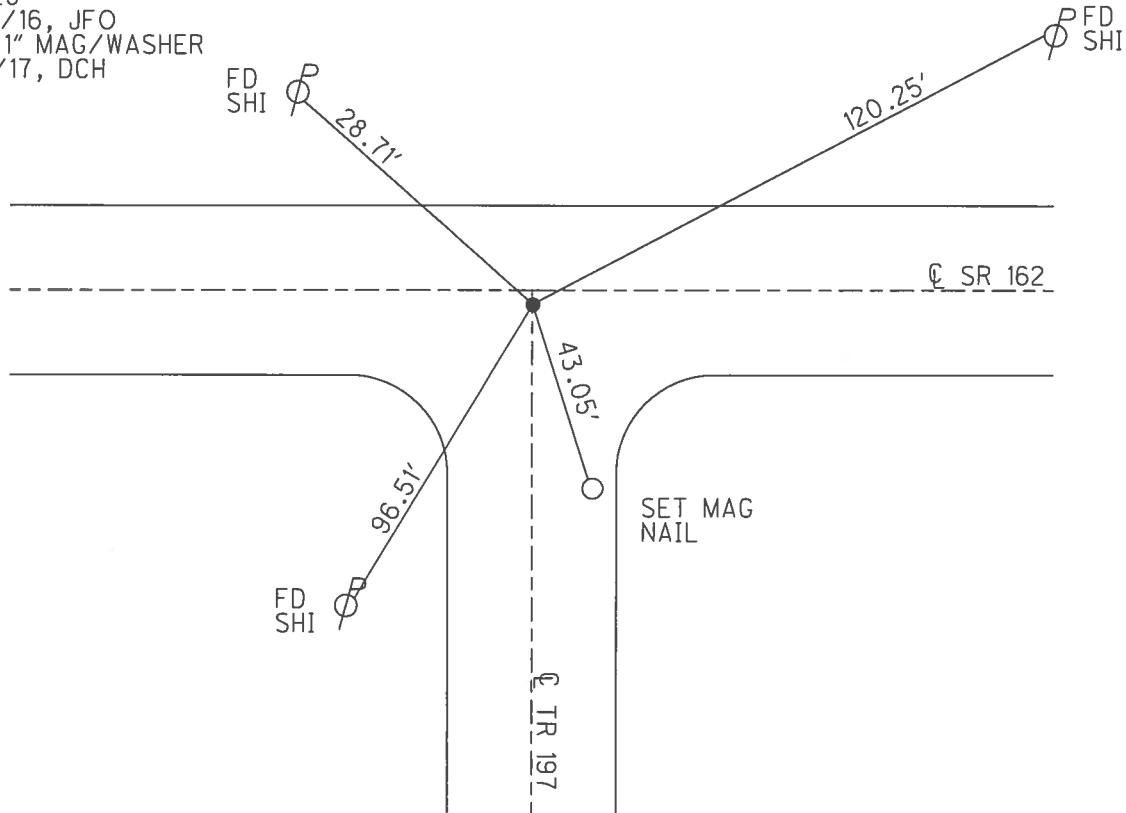
PERSONNEL \_\_\_\_\_ REFERENCE NO. 29 SHEET 31 OF 32  
 NOTES POORE \_\_\_\_\_ DATE 8/2/17 ROUTE SR 162  
 H.C. HOMAN \_\_\_\_\_ WEATHER SUNNY COUNTY SENECA  
 R.C. CARSON \_\_\_\_\_ TEMP. 50° TOWNSHIP REED  
 RHOADES \_\_\_\_\_ SECTION 13  
 T. 2 N R. 17 E

TYPE MONUMENT MAG/WASHER  
~~ON SURFACE~~ - BELOW ON  
~~LEFT~~ - CL PAV'T - RIGHT 1"  
TO - EDGE PAVEMENT  
 S.L.M. 482+07



GRID: NORTHING: 531181.406 EASTING: 1874284.4477

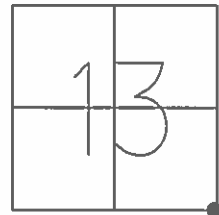
RECORD: P.I.  
 $\Delta = 00^\circ 33' \text{ LT}$   
 SET MAG NAIL  
 9/7/04, DCH  
 FD MAG NAIL  
 REF29  
 5/31/16, JFO  
 SET 1" MAG/WASHER  
 8/2/17, DCH



O.D.O.T. DISTRICT 2 SURVEY OFFICE (USE ONLY)

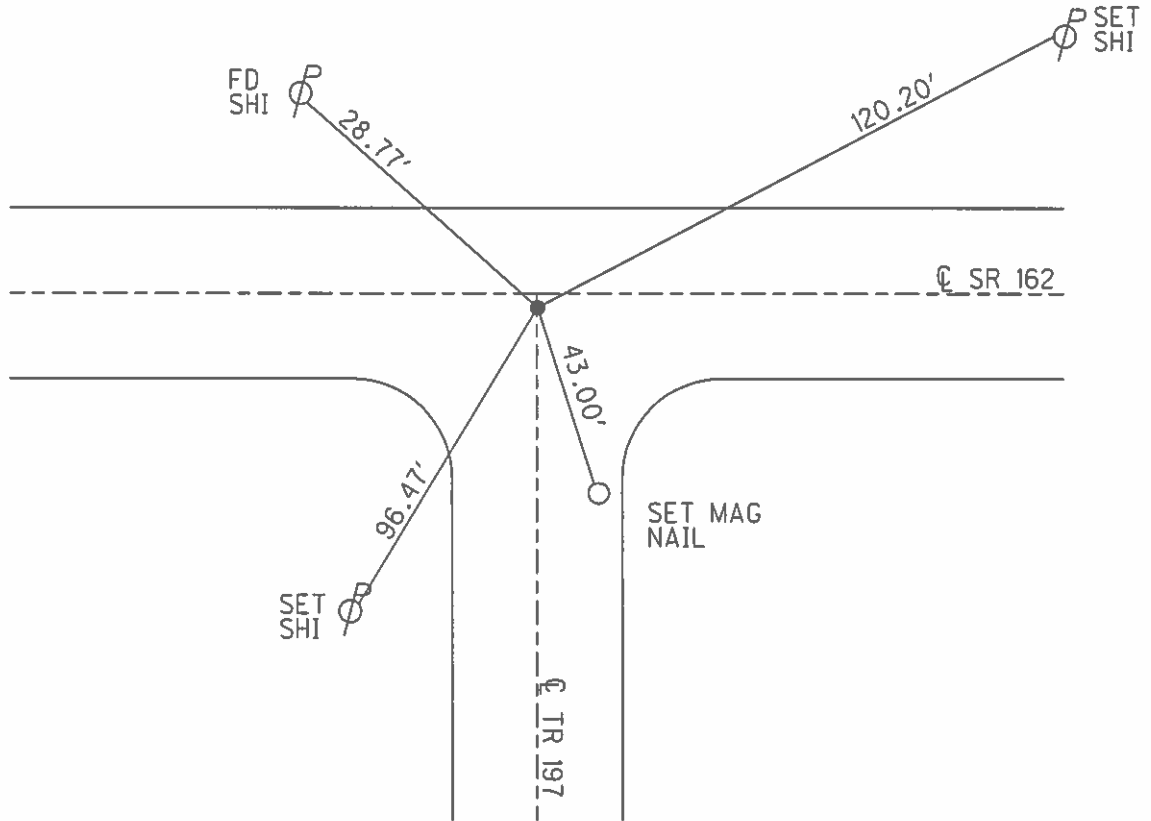
PERSONNEL \_\_\_\_\_ REFERENCE NO. 29 SHEET 31 OF 32  
 NOTES HOMAN \_\_\_\_\_ DATE 3/30/04 ROUTE SR 162  
 H.C. HOMAN \_\_\_\_\_ WEATHER RAIN COUNTY SENECA  
 R.C. ARMS \_\_\_\_\_ TEMP. 50° TOWNSHIP REED  
 \_\_\_\_\_ SECTION 13  
 \_\_\_\_\_ T 2 N R 17 E

TYPE MONUMENT R.R. SPIKE  
~~ON SURFACE~~ - BELOW 4"  
~~LEFT~~ - Q PAV'T - RIGHT 1"  
- TO - EDGE PAVEMENT  
 S.L.M. 482+07



GRID: NORTHING: \_\_\_\_\_ EASTING: \_\_\_\_\_

RECORD: P.I.  
 $\Delta = 00^\circ 33' \text{ LT}$   
 SET MAG NAIL  
 9/7/04, DCH



O.D.O.T. DISTRICT 2 SURVEY OFFICE

PERSONNEL

REFERENCE NO. 29

SHEET 29 OF 30

NOTES HOMAN

DATE 3-30-04

ROUTE SR 162

H.C. HOMAN

WEATHER RAIN

COUNTY SENECA

R.C. ARMS

TEMP. 50°

TOWNSHIP REED

SECTION 13-14

T 2 N R 17 E

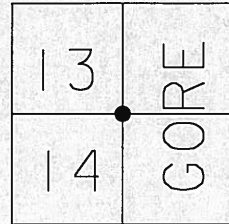
TYPE MONUMENT RR SPIKE

~~ON SURFACE~~ - BELOW 4"

~~LEFT - C PAVT~~ - RIGHT 1' RT

TO EDGE PAVEMENT

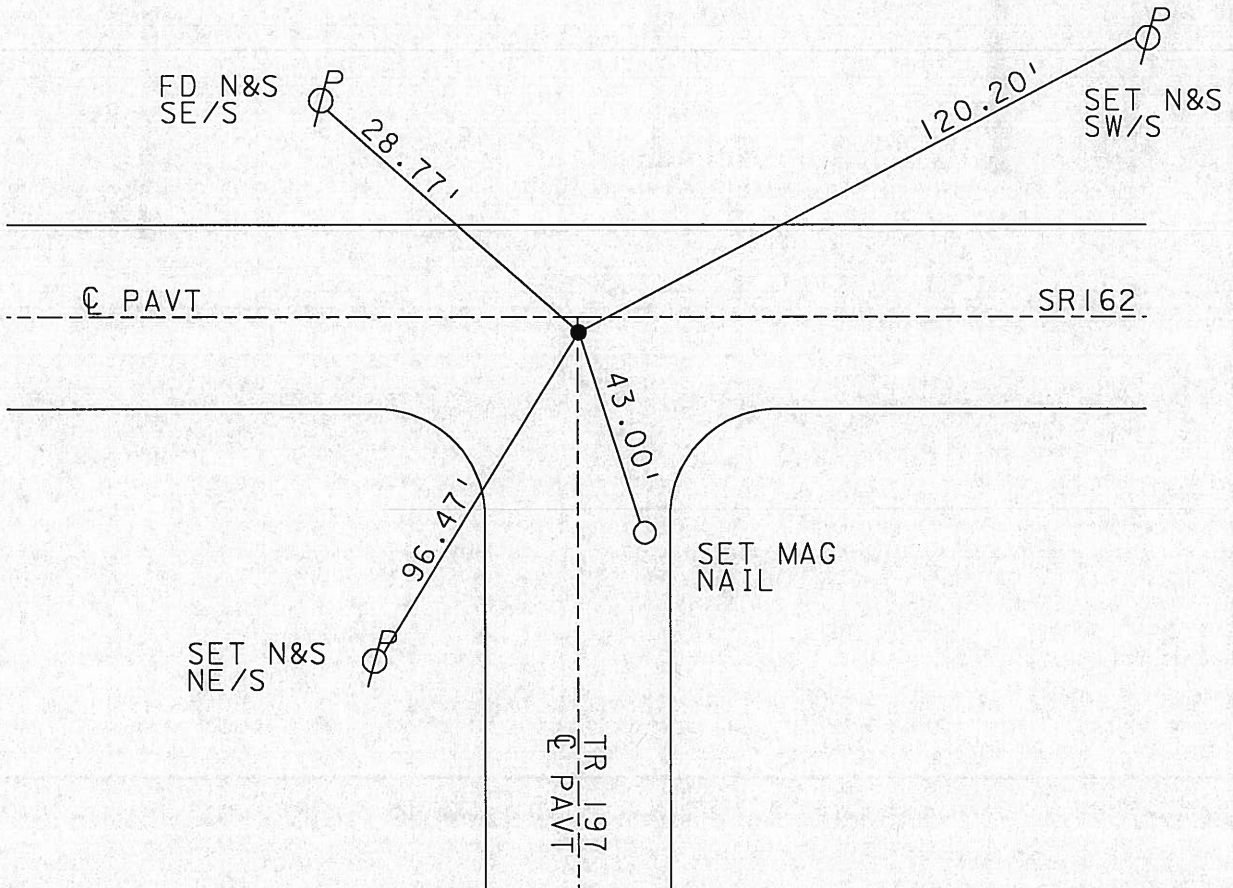
S.L.M. 482+07



1979

RECORD: DOUBTFUL IF POINT WAS  
CORRECT IN THE FIRST PLACE  
J.L. CRONIN  
PI DELTA = 00°-33' LT

SET MAG NAIL  
9-07-04  
DCH



O.D.O.T. DISTRICT 2 SURVEY OFFICE

PERSONNEL

REFERENCE NO. 29

SHEET 29 OF 30

NOTES Ripple

H.C. Barbour

R.C. Geyman

DATE 10.24.70

WEATHER Cloudy Windy

TEMP. 46

ROUTE 162

COUNTY Sen.

TOWNSHIP Reed

SECTION 13-14

T 2 N R 17 E

TYPE MONUMENT RK. Washer  
 ON SURFACE - BELOW RR Spike 3" down  
 LEFT - ☉ PAV'T. - RIGHT 1 RT. ♀  
 TO EDGE PAVEMENT  
 S.L.M. 482+07

13	W R
24	G G



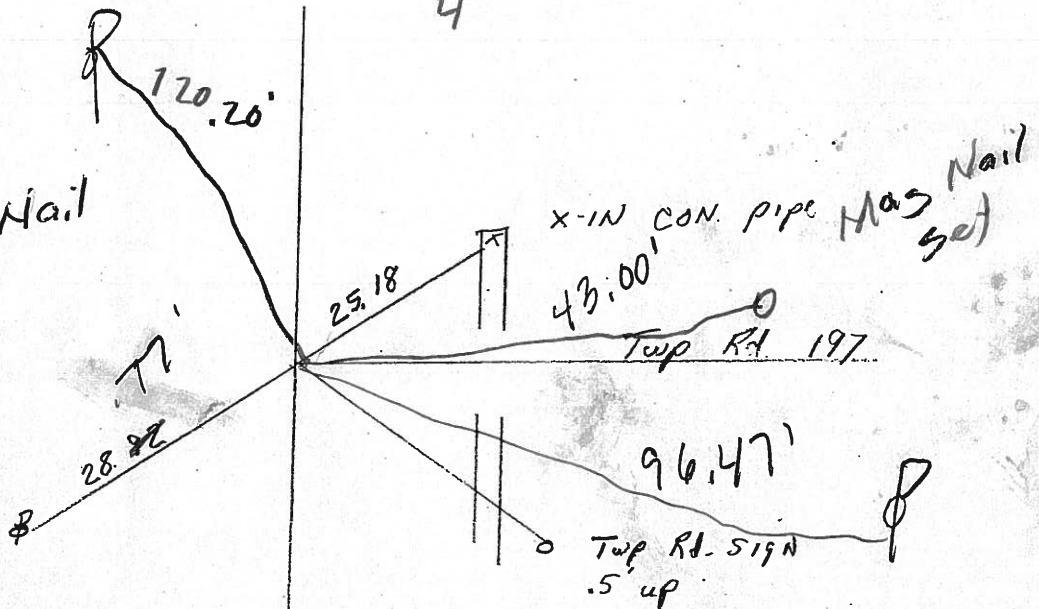
P.I.  $\Delta = 00^{\circ} 33' \text{ LT.}$   
 Doubtful if point was  
 right in first place  
 J.L.C.

Rd RR  
 Spike  
 4" Down

Set Mag Nail

9-7-04

D.C.H



3-30-04  
 Rain  
 50°

Homan HC & Notes  
 Arms RC

# O.D.O.T. DISTRICT 2 SURVEY OFFICE

PERSONNEL

REFERENCE NO. 29

SHEET 29 OF 30

NOTES Ripple

H.C. BARBOUR

R.C. ECYMAN

DATE 10-24-90

WEATHER Cloudy Windy

TEMP. 46°

ROUTE 162

COUNTY Sen.

TOWNSHIP Reed

SECTION 19-14

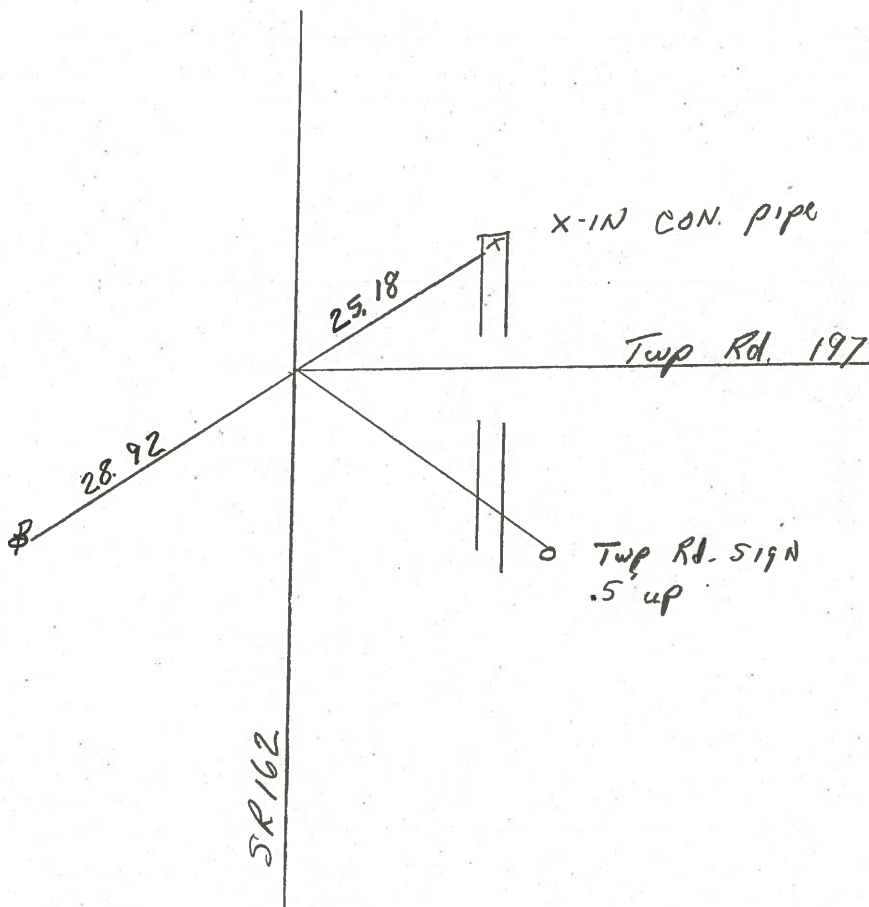
T 2 N R 17 E

TYPE MONUMENT PK + Washer  
 ON SURFACE - BELOW RR spike 3" down  
 LEFT - ☉ PAV'T. - RIGHT 1" RT. &  
 TO EDGE PAVEMENT  
 S.L.M. 482+07

13	RE
24	GO



P.I.  $\Delta = 00^{\circ} 33' \text{LT.}$   
 Doubtful if point was  
 right in first place  
 ↓ L.C.



County Seneca S.R. #162

Date 1/09/84

Township Leed

Weather overcast

Section 13 E 14

Temp. 22°

T2N, R1E

Personnel Cronin

13	GOFF
24	GOFF

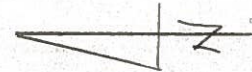


#29

Ripple

Geyman

Barbour

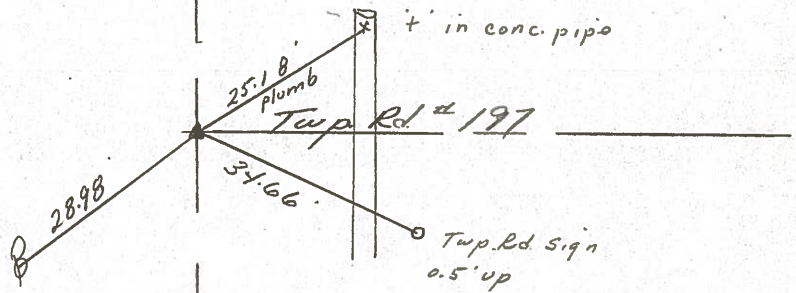


P.I. Δ = 00°33 Lt

639 + 31.70

Set P.R. & washer atop P.R.

Spike 1' Rt. & Point-Doubt-  
ful if point was right in the  
first place



Q S.R. #1627

County Seneca S.R. 162

Date 6-12-79

Township Reed

Weather Fair

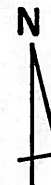
Section 13, 18 & 24, 19

Temp. 72°

T<sub>2</sub>N, R<sub>17</sub>E

Personnel Schneider  
Mosser  
Barbour

13	18
24	19



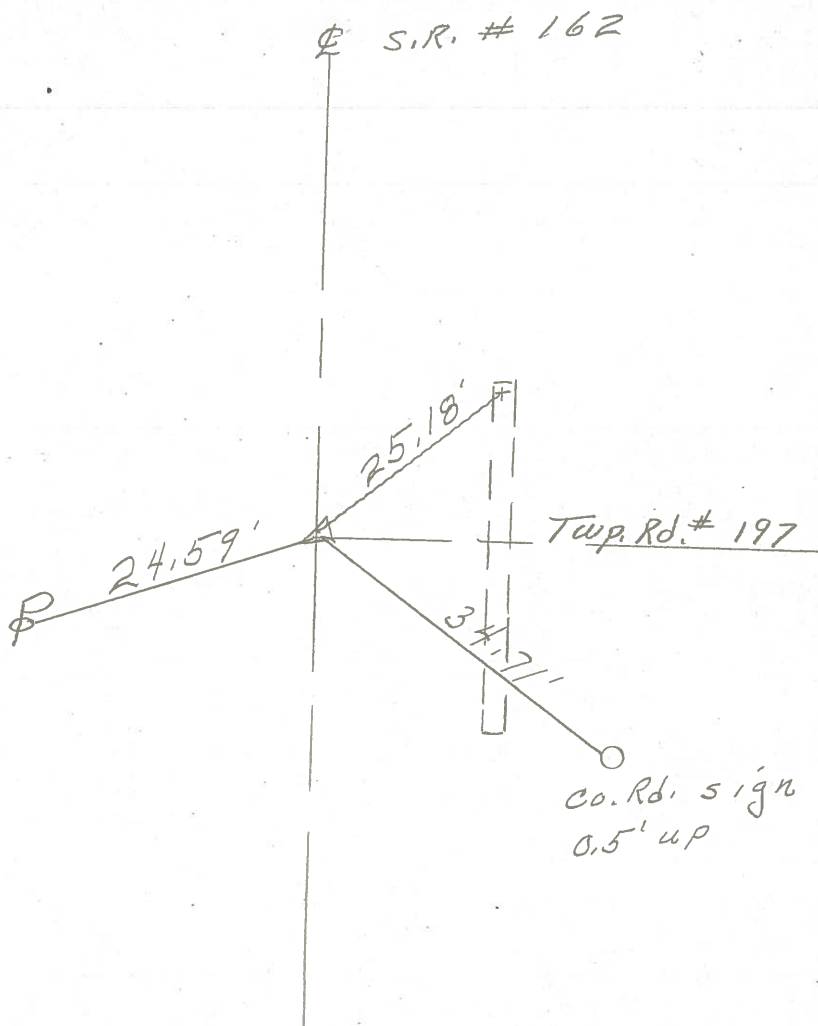
29



639 + 31.7

R. R. spk. on E

Δ = 0° 33' Lt.





6/1/54

(27)

45 611 + 27

454 + 27

625 + (28)

627 + 00

469 + 90

4

(29)

637 + 31.7

482 + 07

5

(30)

5: 659 + 73.5

End of Project  
Seneca-Huron Co.  
line

S.H. 449 Sec N

(26)

Dug for stone did not locate

Set R.R. Spike on  $\phi$

Fd 3-31-04

DCH

(27)

Solid Iron Pin on  $\phi$

Fd 3-30-04

DCH

(28)

Dug for Stone Could not

locate set R.R. Spike on  $\phi$

Fd 3-30-04

DCH

(29)

End of Project  
Seneca-Huron Co.  
line

7. 9.

$\Delta = 0^{\circ} 0'$

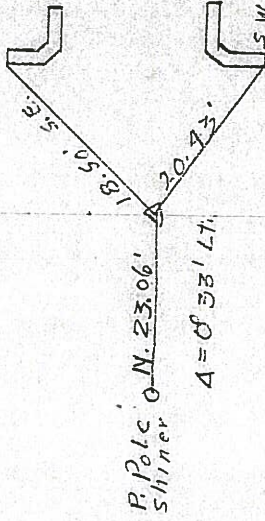
A 44.1' S 24" stump  
shiner apple

53.2' S.W.  $\phi$  30" ELM  
shiner

18" Apple  
shiner N.E. 66.85'

$\Delta = 0^{\circ} 0'$

18" Apple  
shiner N.W. 50.45'



P. Pole  
shiner

P. Pole  
shiner N. 72.7'

Seneca-Huron Co. line  
23.5' S.E.  $\phi$  TEL. Pole

W

shiner  
Pole

shiner  
Pole

shiner  
Pole

shiner  
Pole