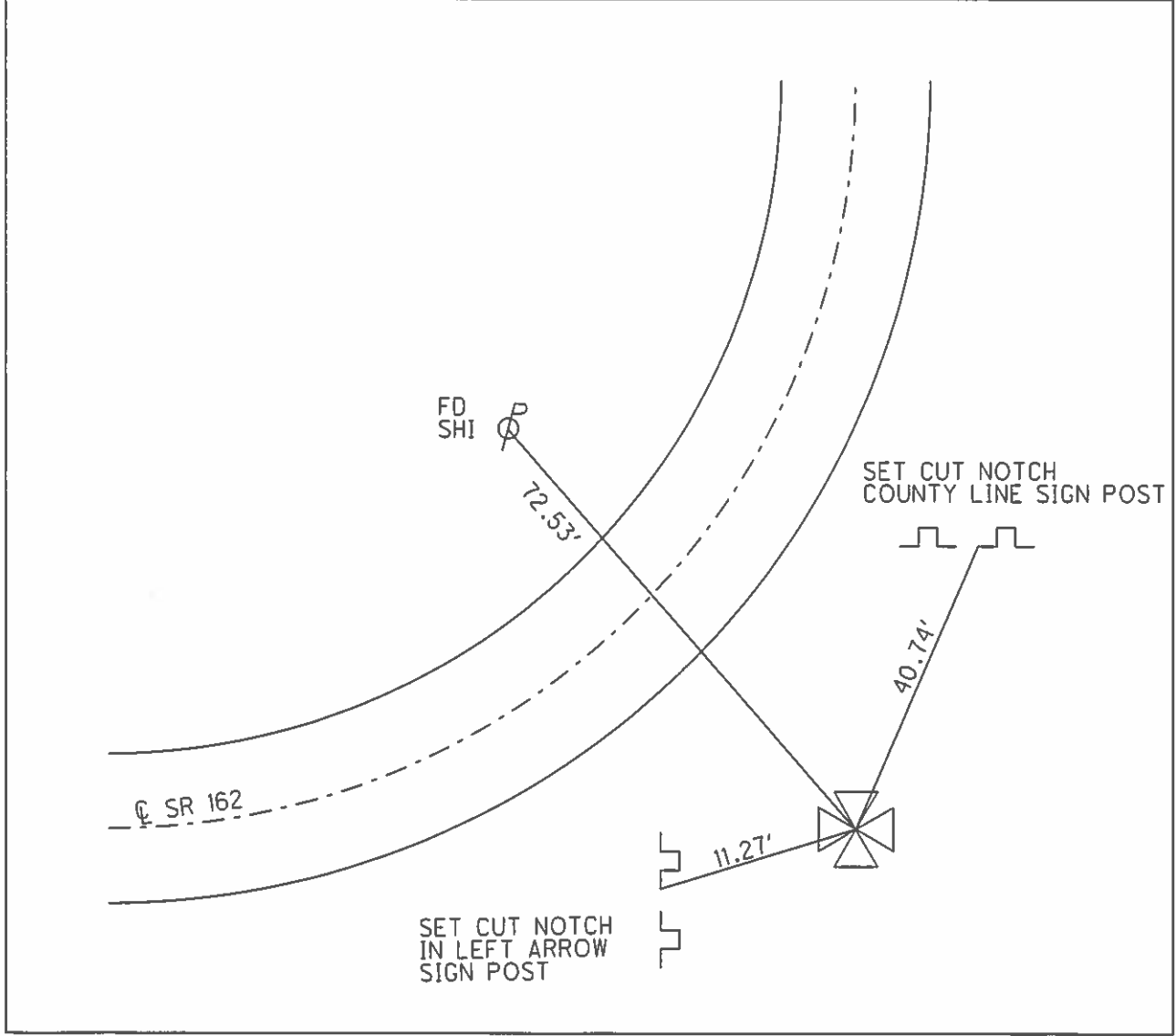
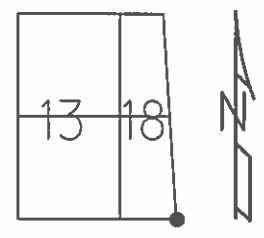


O.D.O.T. DISTRICT 2 SURVEY OFFICE (USE ONLY)

PERSONNEL \_\_\_\_\_ REFERENCE NO. 30 SHEET 32 OF 32  
 NOTES HOMAN \_\_\_\_\_ DATE 7/14/04 ROUTE SR 162  
 H.C. BARNHISEL \_\_\_\_\_ WEATHER CLOUDY COUNTY SENECA  
 R.C. CANTERBURY \_\_\_\_\_ TEMP. 70° TOWNSHIP REED  
 \_\_\_\_\_ SECTION 18  
 \_\_\_\_\_ T 2 N R 18 E

TYPE MONUMENT \_\_\_\_\_ CORNER STONE \_\_\_\_\_  
 ON SURFACE - ~~BELOW~~ \_\_\_\_\_ ON \_\_\_\_\_  
~~LEFT~~ - C PAV'T - RIGHT 25.1' \_\_\_\_\_  
13.9' TO RT EDGE PAVEMENT \_\_\_\_\_  
 S.L.M. 502+12.8 \_\_\_\_\_  
 GRID: NORTHING: \_\_\_\_\_ EASTING: \_\_\_\_\_



O.D.O.T. DISTRICT 2 SURVEY OFFICE

PERSONNEL

REFERENCE NO. 30

SHEET 30 OF 30

NOTES HOMAN

DATE 7-14-04

ROUTE SR 162

H.C. BARNHISEL

WEATHER CLOUDY

COUNTY SENECA

R.C. CANTERBURY

TEMP. 70°

TOWNSHIP REED

SECTION CO. LINE

T 2 N R 17 E

TYPE MONUMENT CORNER STONE

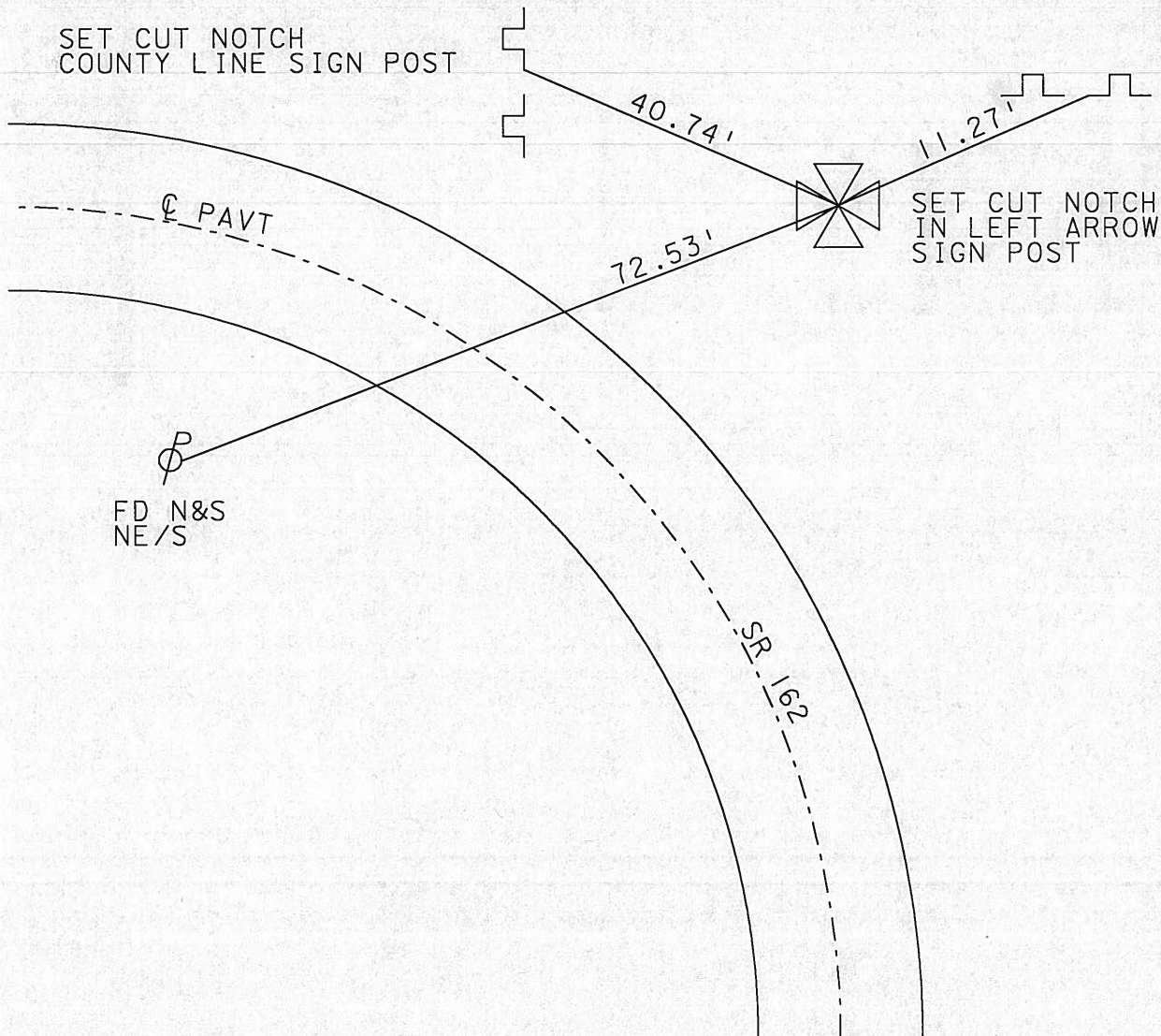
ON SURFACE ~~- BELOW~~ ON

~~LEFT - C PAVT - RIGHT~~ 25.1' RT

13.9' TO RT EDGE PAVEMENT

S.L.M. \_\_\_\_\_

13	CO LINE	CO LINE
14	CO LINE	CO LINE



# O.D.O.T. DISTRICT 2 SURVEY OFFICE

PERSONNEL

REFERENCE NO. 30

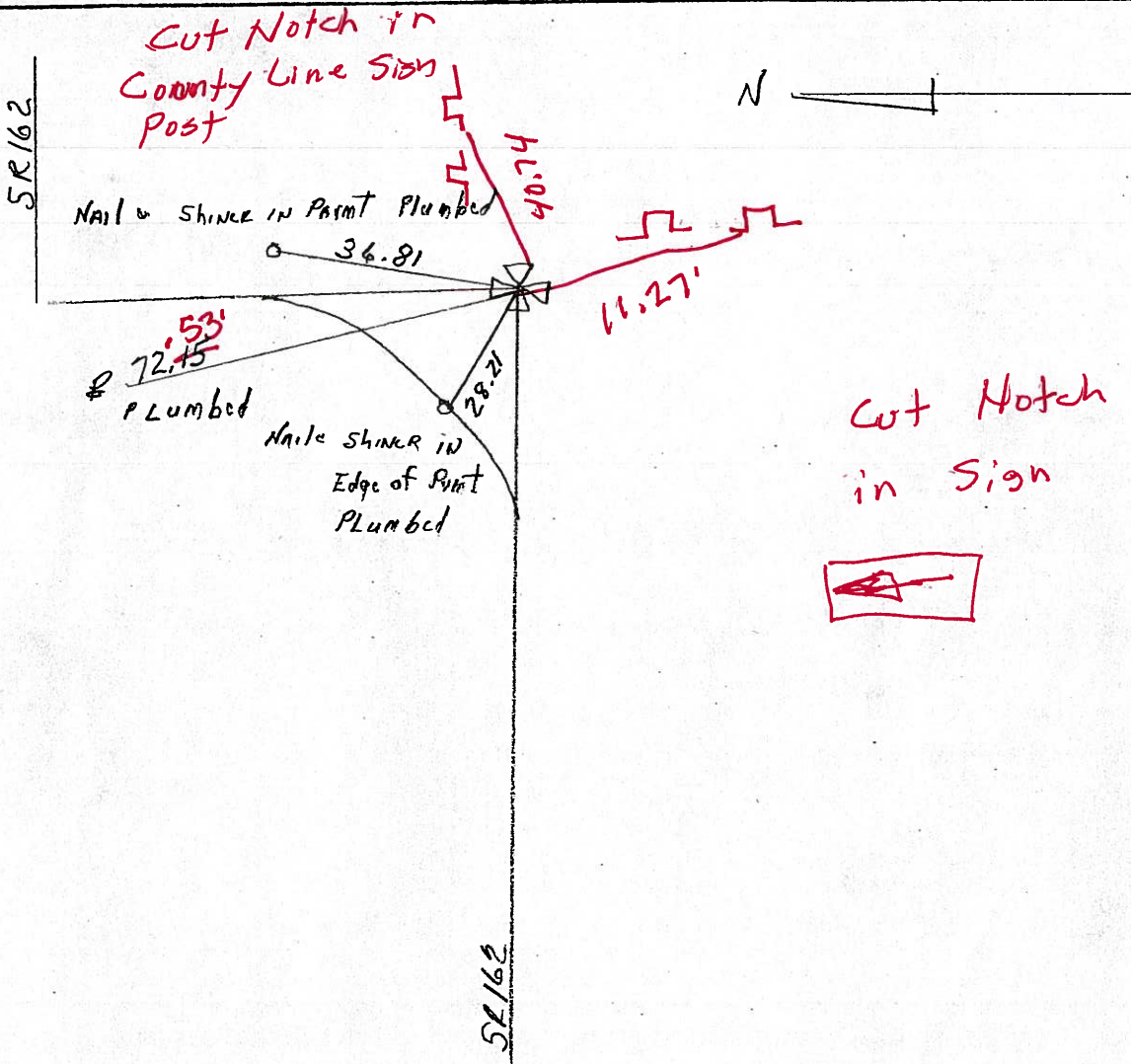
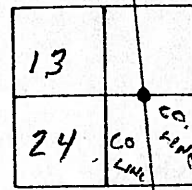
SHEET 30 OF 30

NOTES Ripple Homan  
 H.C. BARBOUR Barnhisel  
 R.C. Gayman  
Canterbury

DATE 7-14-04  
~~10-24-90~~  
 WEATHER Cloudy Windy Cloudy  
 TEMP. 46° 70°

ROUTE 162  
 COUNTY Sen.  
 TOWNSHIP Reed  
 SECTION Co. Line  
T2 N R 17 E

TYPE MONUMENT CORNER STUMP ON SURFACE  
 ON SURFACE - BELOW ON  
 LEFT - & PAV'T. - RIGHT 15' RT. of RT. Edge of PAV'T.  
139' TO RT EDGE PAVEMENT 25.1' RT of &  
 S.L.M. of Right Edge



O.D.O.T. DISTRICT 2 SURVEY OFFICE

PERSONNEL

REFERENCE NO. 30

SHEET 30 OF 30

NOTES Ripple

H.C. BARBOUR

R.C. Geyman

DATE 10-24-98

WEATHER Cloudy Windy

TEMP. 46°

ROUTE 162

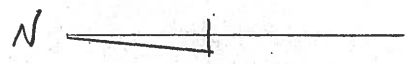
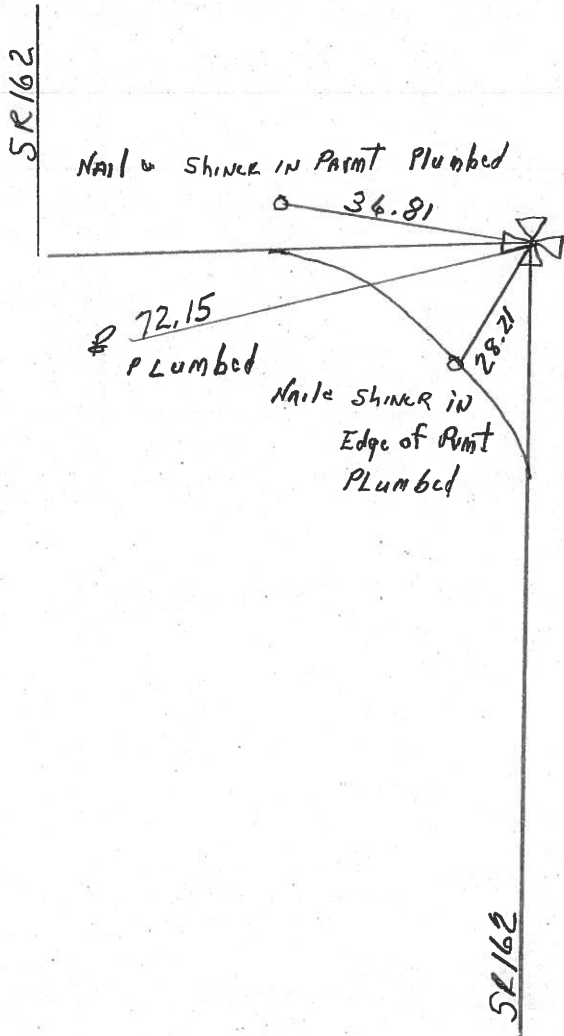
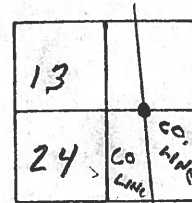
COUNTY Sen.

TOWNSHIP Reed

SECTION Co. Line

T 2 N R 17 E

TYPE MONUMENT CORNER STONE ON SURFACE  
 ON SURFACE - BELOW \_\_\_\_\_  
 LEFT - & PAV'T. - RIGHT 15' RT. of RT. Edge of Pavm't.  
 TO \_\_\_\_\_ EDGE PAVEMENT  
 S.L.M. \_\_\_\_\_



County Seneca S.R. # 162

Date 1/09/84

Township Leed

Weather overcast

Section 13 & 14 GORE

Temp. 22°

T2N, R17E

Personnel Cronin

13	SENECA CO HUBBARD CO
24	



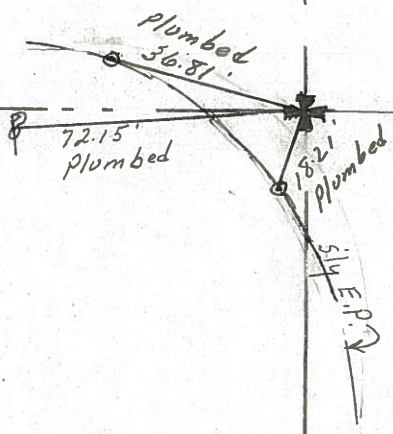
#30

Ripple

Geyman

Barbour

659 + 73.50  
 Fd. Corner Stone on  
 surface - 15' Rt. Lt. E.P.



S.R. # 162

County Seneca S.R. 162

Date 6-12-79

Township Reed

Weather Fair

Section 18 & 19

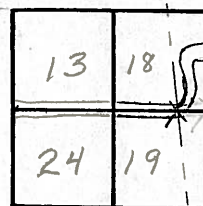
Temp. 72°

T 2 N, R 7 E

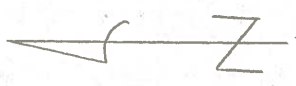
Personnel Schneider

Mosser

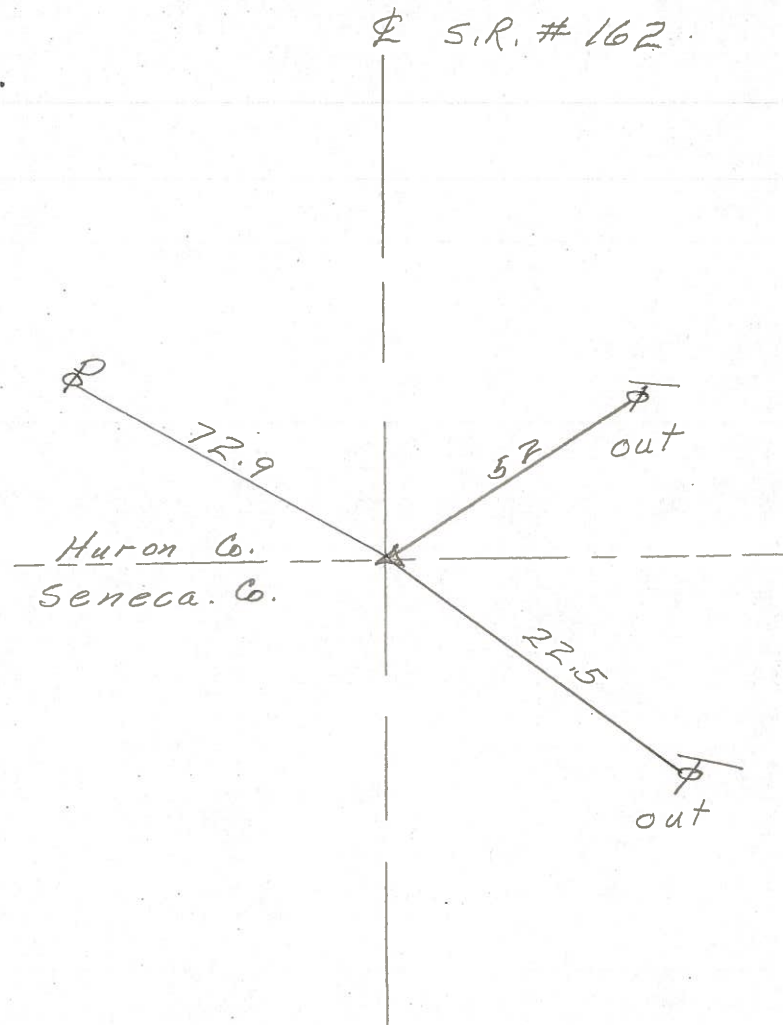
Barbour



30



659 + 73.5  
Stone on Co. Line



612 P 54

(27)

45 611 + 2.7

454 + 27

(28)

627 + 00

469 + 90

(29)

657 + 31.7

482 + 07

(30)

5: 659 + 73.5

S.H. 449 Sec N

(26)

Dug for stone did not locate

set R.R. Spike on  $\phi$

FD 3-31-04  
DCH

(27)

Solid Iron Pin on  $\phi$

FD 3-30-04  
DCH

(28)

Dug for Stone Could not

locate set R.R. Spike on  $\phi$

FD 3-30-04  
DCH

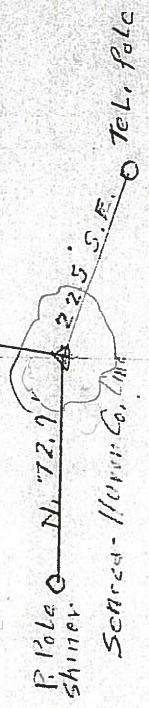
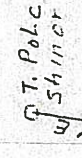
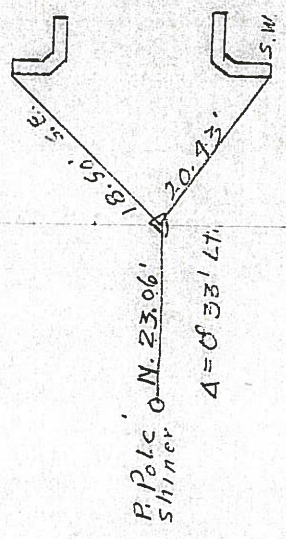
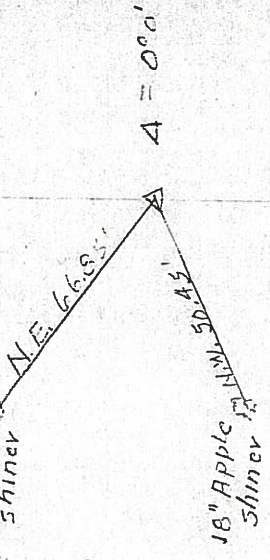
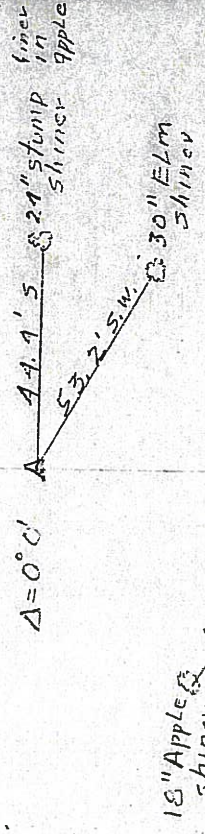
(29)

End of Project Seneca-Huron Co.

1-111C

7. 9.

E



W

Shiner  
1 LC

Shiner  
2 LC

Shiner  
1 LC

Shiner  
1 in  
Pole