

#629 6038

STATE OF OHIO
DEPARTMENT OF HIGHWAYS

FED. RD. DIVISION	STATE	PROJECT	TYPE FUNDS
2	OHIO	STATE	

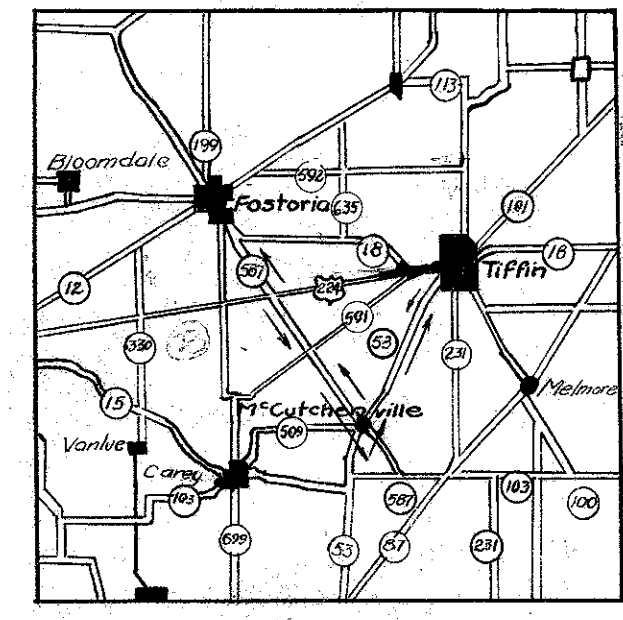
SENECA COUNTY
SEN-224-(10.35-10.66)
SEN-18-11.66

Note: All references to Federal Project Numbers appearing in these plans shall be disregarded.

SEN-224-(10.35-10.66) & SEN-18-11.66

SENECA COUNTY

HOPEWELL TOWNSHIP



DETOUR MAP

102011 BEGIN WORK STA 2+16 BEGIN PROJECT STA 3+50	102011 END WORK & PROJECT STA 19+21.89	102011 BEGIN WORK STA 519+00 BEGIN PROJECT STA 520+00	102011 END WORK & PROJECT STA 79+71.75
--	--	--	--

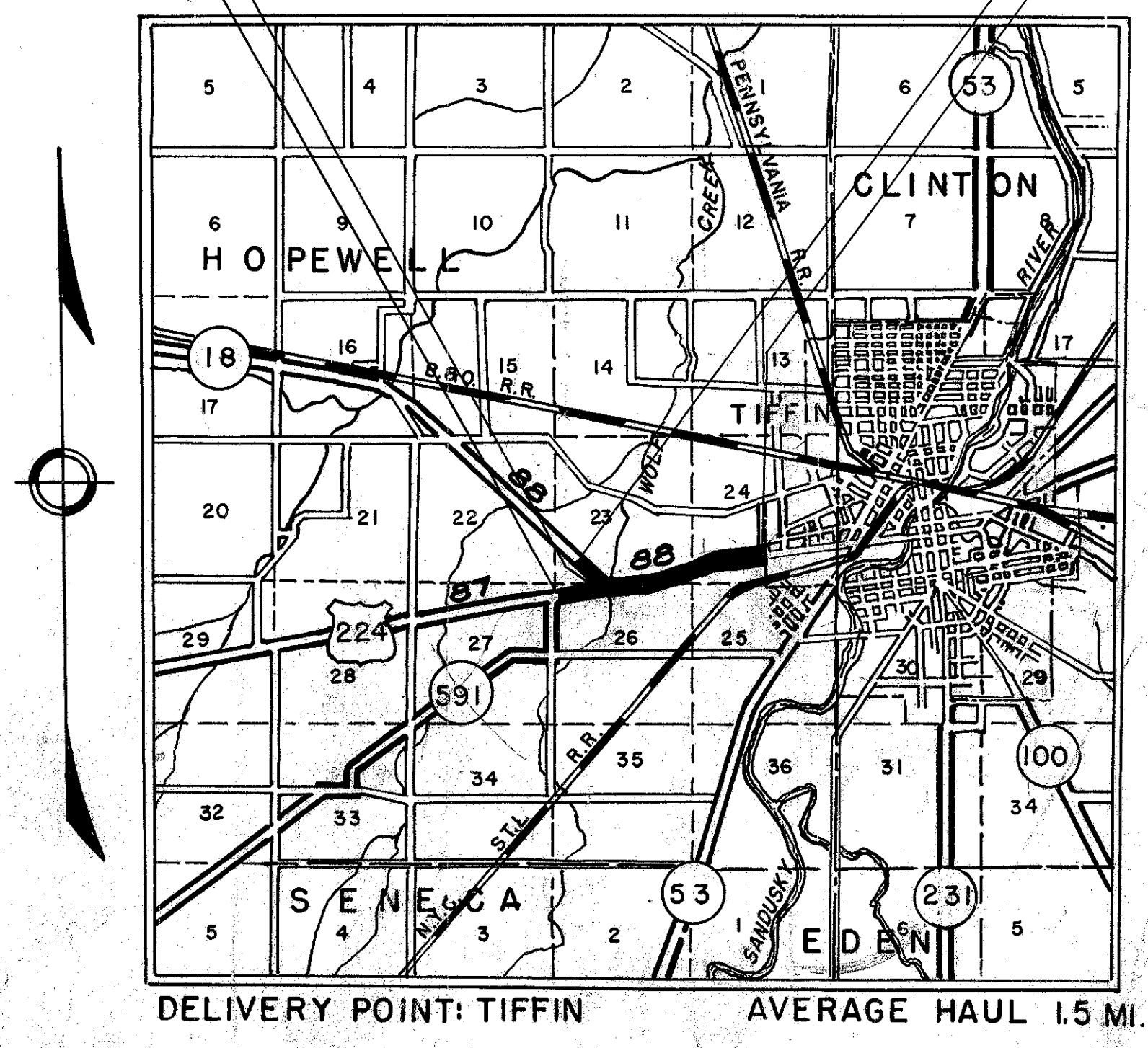
CONVENTIONAL SIGNS

COUNTY LINE	-----
TOWNSHIP LINE	-----
SECTION LINE	-----
CORPORATION LINE	-----
FENCE LINE	-x-x-x-x-
CENTER LINE	Φ Φ Φ Φ Φ Φ
POLE LINE	-----
RAILROAD	====
GUARD RAIL	•••••
GUARD RAIL POSTS	o o o o o

LINE DATA

102011 BEGIN WORK STA 2+16 BEGIN PROJECT STA 3+50 END WORK & PROJECT STA 19+21.89 GROSS LENGTH = NET LENGTH OF WORK = 1705.89 LIN.FT. = 0.323 MI. GROSS LENGTH = NET LENGTH OF PROJECT = 1571.89 LIN.FT. = 0.297 MI.	STA 2+16 STA 3+50 STA 19+21.89
657113 BEGIN WORK STA 519+00 BEGIN PROJECT STA 520+00 END WORK & PROJECT STA 79+71.75 STATION EQUATION STA 531+40 BACK = STA 20+00 AHEAD STA 519+00 TO STA 531+40 = 1240 LIN. FT. STA 520+00 TO STA 531+40 = 1140 LIN. FT. STA 20+00 TO STA 79+71.75 = 5971.75 * 1.04 = 5970.71 LIN. FT. GROSS LENGTH = NET LENGTH OF WORK = 1240 + 5970.71 = 7210.71 LIN. FT. = 1.365 MI. GROSS LENGTH = NET LENGTH OF PROJECT = 1140 + 5970.71 = 7110.71 LIN. FT. = 1.346 MI.	STA 519+00 STA 520+00 STA 79+71.75

TOTAL NET LENGTH OF WORK = 1705.89 + 7210.71 = 8916.60 LIN. FT. OR 1.688 MI.
TOTAL NET LENGTH OF PROJECT = 1571.89 + 7110.71 = 8682.60 LIN. FT. OR 1.644 MI.
* Equation Sta. 26+53.36 Back = Sta. 26+54.40 Ahead.



DELIVERY POINT: TIFFIN AVERAGE HAUL 1.5 MI.

LOCATION PLAN

Scale 1" = 1 Mi.
PORTION TO BE IMPROVED STATE HIGHWAYS
OTHER ROADS
DETOURS (See Detour Map)

The Standard Specifications of the State of Ohio, Department of Highways, including changes and Supplemental Specifications listed in the proposal shall govern this Project.

The Right of way necessary for this improvement will be provided by the State of Ohio.

I hereby approve these plans and declare that the making of this improvement will require the closing to traffic of the Highway and that detours will be provided as indicated on the plans for a period not to exceed 90 Calendar days. Additional provisions for the maintenance and safety of traffic will be as set forth on the plans and estimates.

- Approved: George W. Rankin
Date: Dec. 27, 1951 Division Deputy Director
- Approved: John J. Deery
Date: 7-1-54 Deputy Director of Planning & Programming
- Approved: Richard Patch
Date: 6-22-54 Engineer of Bridges
- Approved: W. H. [Signature]
Date: 6-22-54 Engineer of Location & Design
- Approved: W. H. [Signature]
Date: 6-22-54 Deputy Director of Design and Construction
- Approved: W. F. [Signature]
Date: 7-2-54 First Assistant Director
- Approved: W. H. [Signature]
Date: 7-2-54 Director of Highways

INDEX OF SHEETS

TITLE SHEET	1
TYPICAL SECTIONS	2
GENERAL NOTES	2, 3 & 7
PAVEMENT COMPUTATIONS	3
GENERAL SUMMARY	3
DETAILS	4
SUMMARIES	5-6
TREE & STUMP SCHEDULE	7
PLAN & PROFILE	8-17
CROSS SECTIONS	18-30
STRUCTURE DETAILS	31-32
CHANNEL CROSS SECTIONS	33-34

Reviewed & Approved: W. H. [Signature]
Date: 6/4/54 Engineer of Traffic & Safety

SCALES

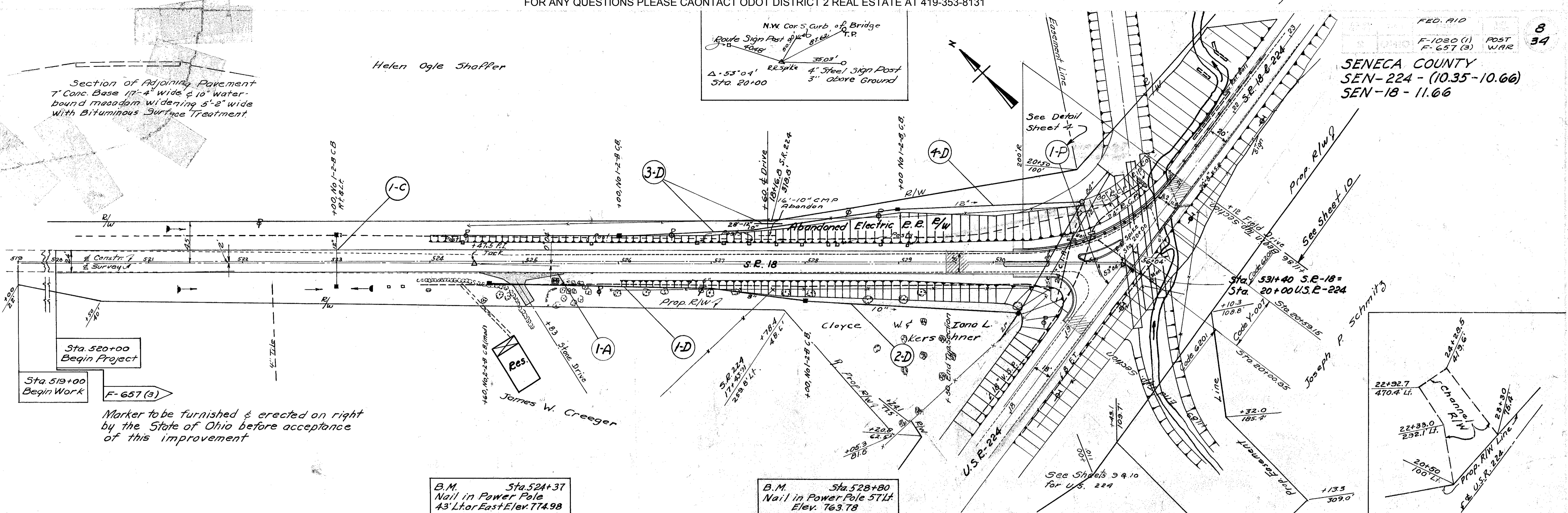
PLAN	1" = 50' & 20'
PROFILE HORIZONTAL	1" = 50' & 20'
PROFILE VERTICAL	1" = 5'
CROSS SECTIONS	1" = 5'

CONSTRUCTION BUREAU
JUL 19 1955
GROUND PHOTOLAB

SUPPLEMENTAL SPECIFICATIONS	STANDARD	DRAWINGS
	L-3 4-1-50	I-8 MH No. 2 5-1-52
	L-3-A 4-1-50	I-12 1-25-52
	I-1, 2, 3, 4, 5 2-20-45	G-7.07 1-2-53
	I-8 C.B. 1-2A & B 5-1-52	I-8 C.B. 2-5 & 2-6 5-1-52
	I-8 C.B. 2-2A & B 5-1-52	T-35 10-1-52
	I-8 C.B. 1-3 & 1-4 5-1-52	RT-1 6-1-53
	I-8 C.B. No. 3-A 5-1-52	I-15 NRB 2-1-47
	L-1 4-1-50	I-21 1-2-51
	I-8 MH No. 1 5-1-52	S-27 P.C. 3 2-20-45
	I-8 MH No. 1-A 6-1-54	SP-53 7-21-53

FILE NO.	SENECA COUNTY
SEC.	SEN-224-(10.35-10.66) SEN-18-11.66
DATE OF LETTING	
CONTRACT NO.	

SENECA COUNTY
SEN-224 - (10.35-10.66)
SEN-18 - 11.66



Section of Adjoining Pavement
7" Conc. Base 17'-4" wide & 10' water-
bound macadam widening 5'-2" wide
with Bituminous Surface Treatment

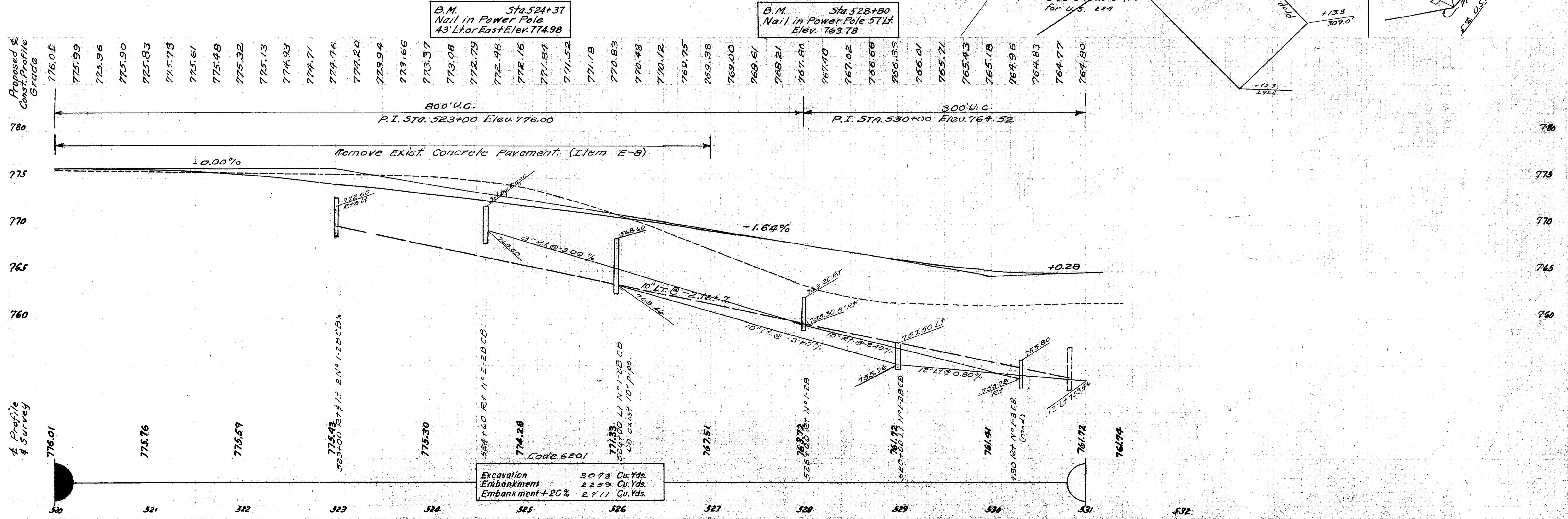
N.W. Cor. S. Curb of Bridge
Route Sign Post 9' 1/2" T.P.
35.03' 0"
R.R. Spike 4" Steel Sign Post
Sta. 20+00
3" above Ground

Sta. 520+00
Begin Project

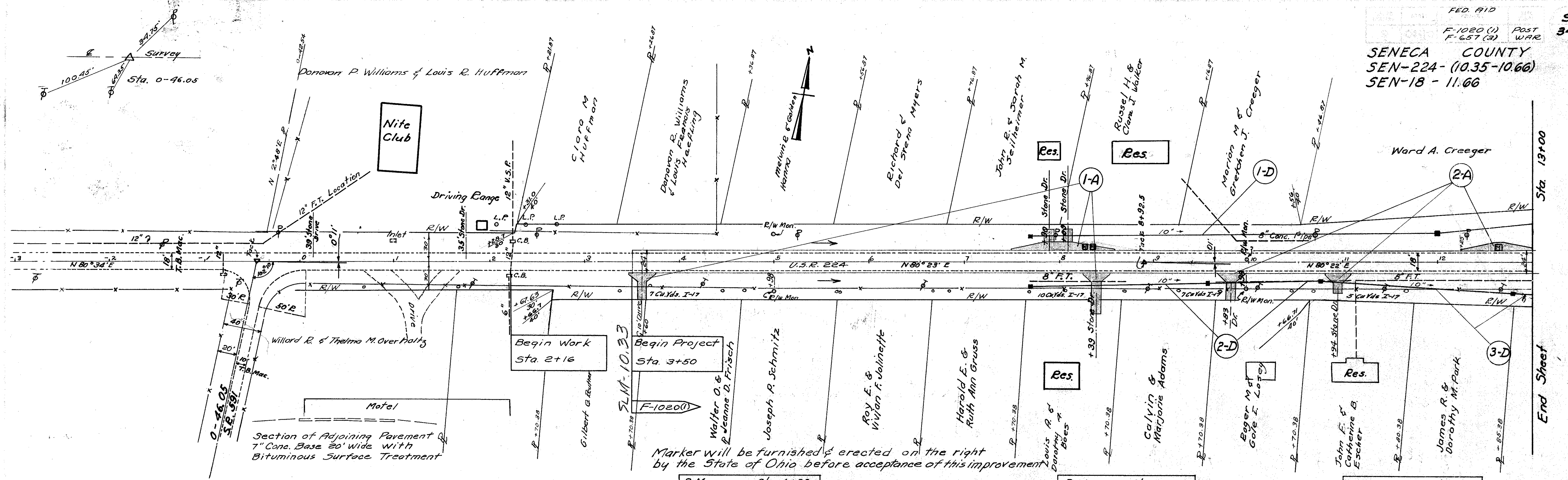
Sta. 519+00
Begin Work

F-657 (3)

Marker to be furnished & erected on right
by the State of Ohio before acceptance
of this improvement



Sta. 520+00 to Sta. 532+00



B.M. Sta. 0+81
 X on East End Conc. Hdwl.
 on Rt. Elev. 775.89

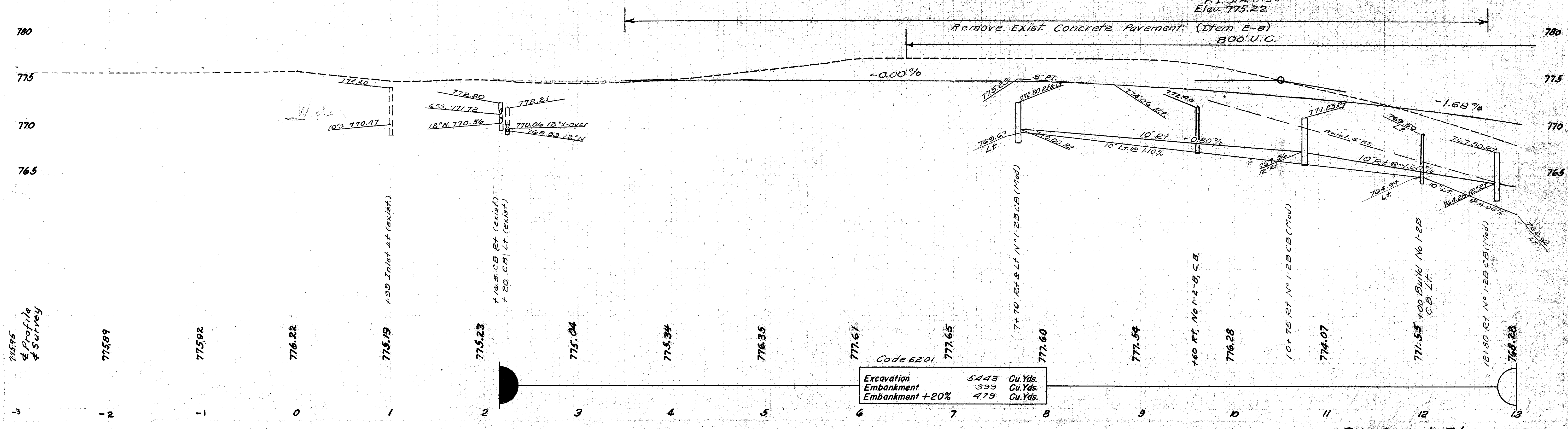
B.M. Sta. 1+12
 So. East Corner of Porch
 at 224 Club 85' Lt.
 Elev. 776.64

B.M. Sta. 4+22
 Nail in Power Pole 26' Rt.
 Elev. 777.56

B.M. Sta. 8+46
 Nail in Power Pole
 48' Rt. Elev. 778.33

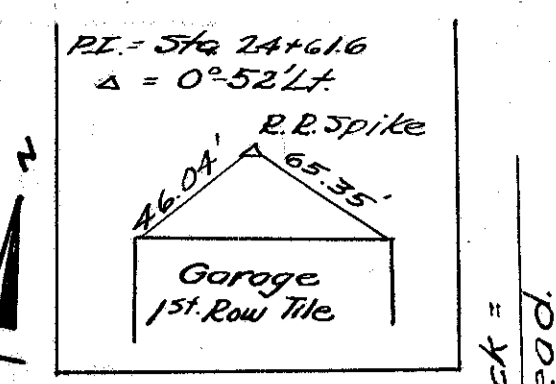
B.M. Sta. 11+44
 Nail in Telephone Pole
 30' Rt. Elev. 773.71

775.22	775.22	775.22	775.21	775.19	775.16	775.12	775.06	774.98	774.90	774.80	774.69	774.56	774.49	774.28	774.11	773.93	773.74	773.54	773.32	773.09	772.85	772.60	772.33	772.04	771.75	771.44	771.12	770.78
--------	--------	--------	--------	--------	--------	--------	--------	--------	--------	--------	--------	--------	--------	--------	--------	--------	--------	--------	--------	--------	--------	--------	--------	--------	--------	--------	--------	--------

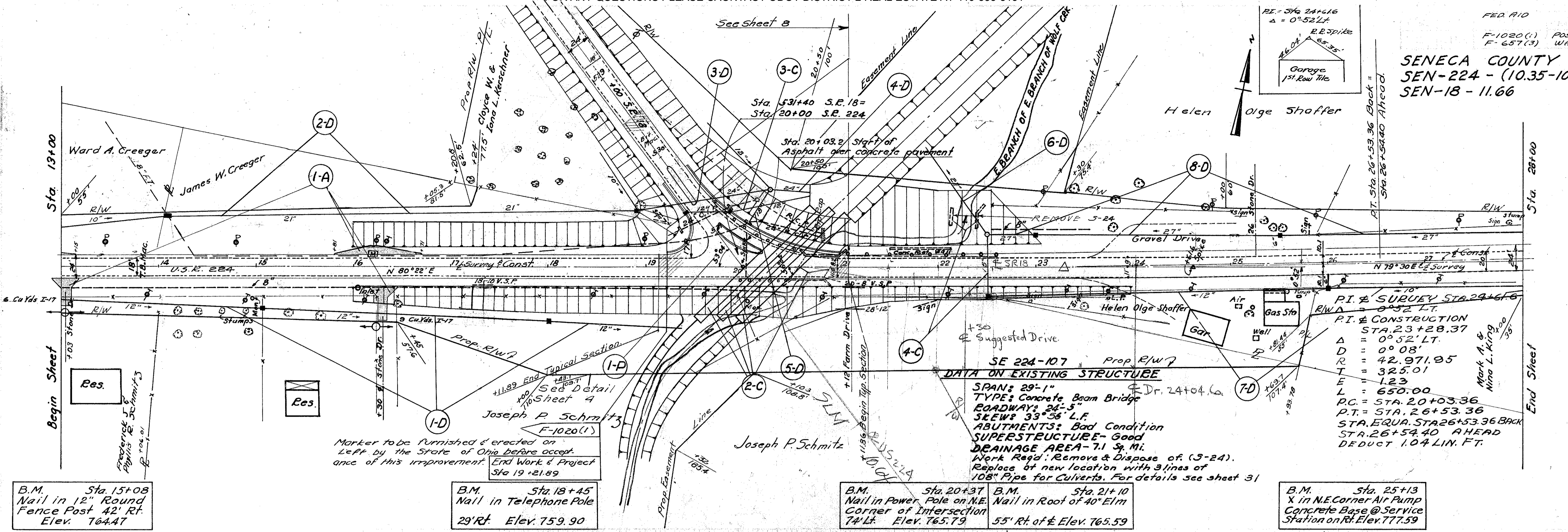


Excavation	5443	Cu. Yds.
Embankment	393	Cu. Yds.
Embankment +20%	479	Cu. Yds.

SENECA COUNTY
SEN-224 - (10.35-10.60)
SEN-18 - 11.66



Helen Olga Shaffer



SE 224-107 Prop. R/W
DATA ON EXISTING STRUCTURE
SPAN: 29'-1"
TYPE: Concrete Beam Bridge
ROADWAY: 24'-5"
SKEW: 33°56' L.F.
ABUTMENTS: Bad Condition
SUPERSTRUCTURE- Good
DRAINAGE AREA- 7.1 Sq. Mi.
Work Req'd: Remove & Dispose of (3-24).
Replace by new location with 3 lines of 108" Pipe for Culverts. For details see sheet 31

P.I. & SURVEY STA. 24+61.6
R/WA = 0°52' LT.
P.I. & CONSTRUCTION
STA. 23+28.37
Δ = 0°52' LT.
D = 0° 08'
R = 42.971.95
T = 325.01
E = 1.23
L = 650.00
P.C. = STA. 20+03.36
P.T. = STA. 26+53.36
STA. EQUA. STA. 26+53.36 BACK
STA. 26+54.40 AHEAD
DEDUCT 1.04 LIN. FT.

Marker to be furnished & erected on Left by the State of Ohio before acceptance of this improvement. End Work & Project Sta 19+21.89

B.M. Sta. 15+08
Nail in 12" Round Fence Post 42' Rt.
Elev. 764.47

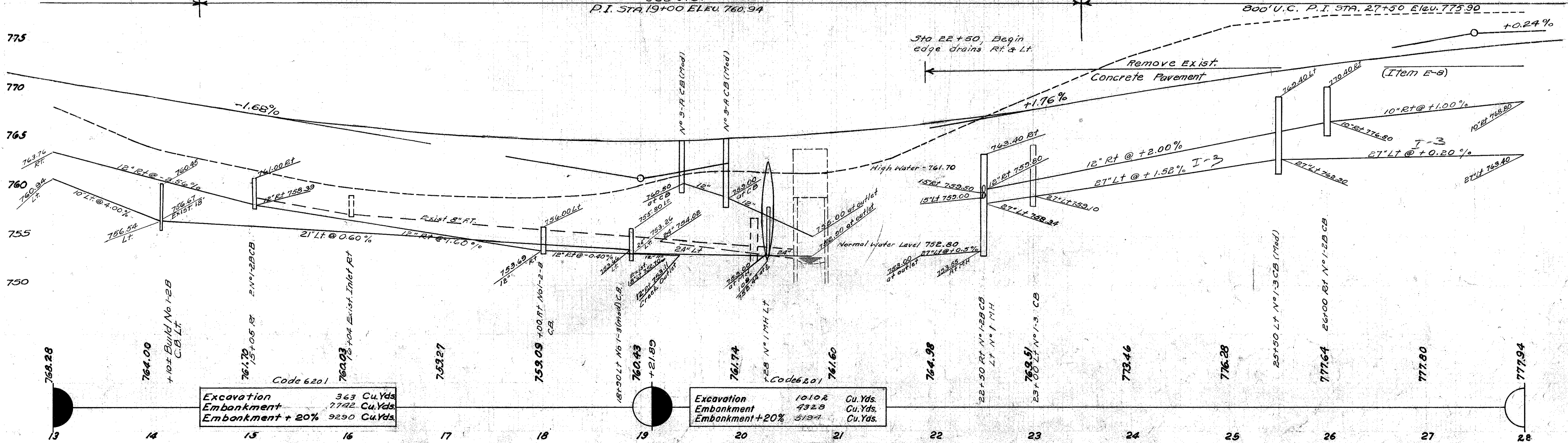
B.M. Sta. 18+45
Nail in Telephone Pole
29' Rt. Elev. 759.90

B.M. Sta. 20+37
Nail in Power Pole on N.E. Corner of Intersection
74' Lt. Elev. 765.79

B.M. Sta. 21+10
Nail in Root of 40' Elm
55' Rt. of E Elev. 765.59

B.M. Sta. 25+13
X in N.E. Corner Air Pump Concrete Base @ Service Station on Rt. Elev. 777.59

770.78	770.44	770.08	769.70	769.31	768.91	768.50	768.09	767.71	767.35	767.01	766.70	766.41	766.14	765.90	765.69	765.50	765.33	765.18	765.06	764.96	764.89	764.84	764.81	764.81	764.83	764.88	764.95	765.04	765.16	765.30	765.46	765.65	765.87	766.11	766.37	766.65	766.96	767.29	767.65	768.03	768.43	768.86	769.29	769.72	770.13	770.53	770.91	771.29	771.65	772.00	772.34	772.67	772.98	773.29	773.58	773.86	774.12	774.38	774.62	774.86
--------	--------	--------	--------	--------	--------	--------	--------	--------	--------	--------	--------	--------	--------	--------	--------	--------	--------	--------	--------	--------	--------	--------	--------	--------	--------	--------	--------	--------	--------	--------	--------	--------	--------	--------	--------	--------	--------	--------	--------	--------	--------	--------	--------	--------	--------	--------	--------	--------	--------	--------	--------	--------	--------	--------	--------	--------	--------	--------	--------	--------



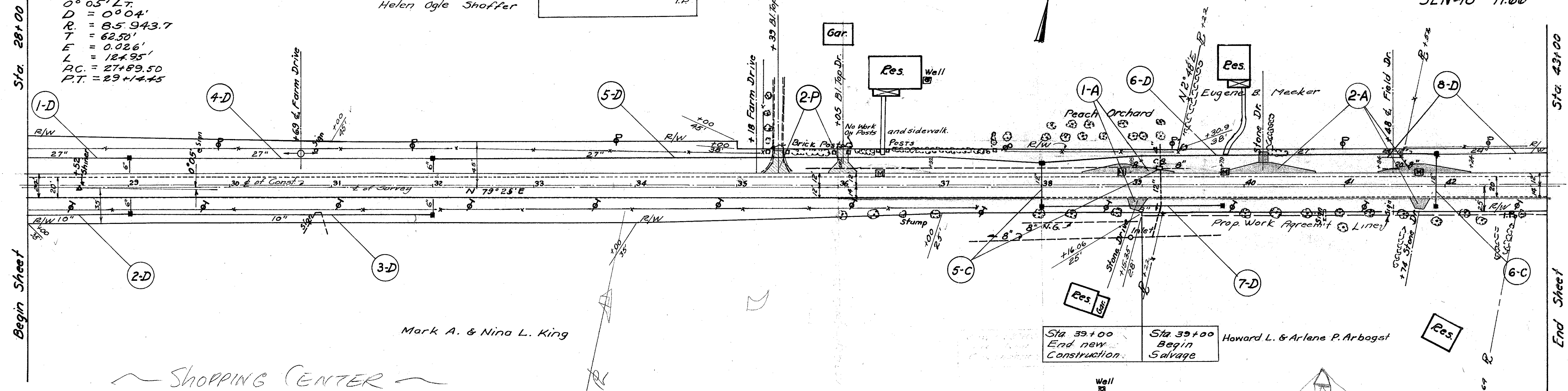
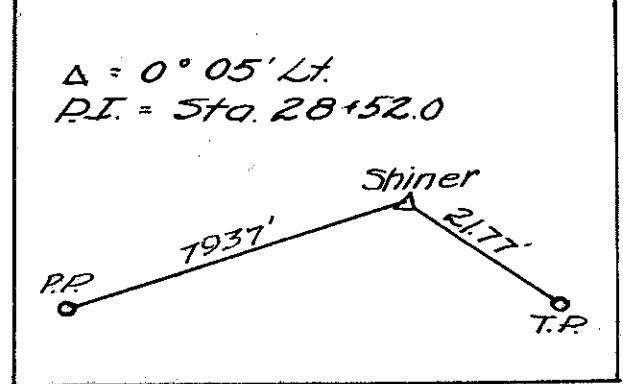
Excavation 363 Cu.Yds
Embankment 7742 Cu.Yds
Embankment + 20% 9290 Cu.Yds

Excavation 1010.8 Cu.Yds
Embankment 432.8 Cu.Yds
Embankment + 20% 519.4 Cu.Yds

SENECA COUNTY
SEN-224-(10.35-10.66)
SEN-18-11.66

CURVE DATA
P.I. STA. 28+52.0
0° 05' LT.
D = 0° 04'
R = 85,943.7
T = 62.50'
E = 0.026'
L = 124.95'
P.C. = 27+89.50
P.T. = 29+14.45

Helen Ogle Shoffer



Shopping Center

Mark A. & Nina L. King

Sta. 39+00 End new Construction
Sta. 39+00 Begin Salvage
Howard L. & Arlene P. Arbogast

B.M. Sta. 33+82
Nail in Power Pole
37' Lt. Elev. 780.78

B.M. Sta. 38+77
Nail in 30" Maple
27' Rt. Elev. 778.35

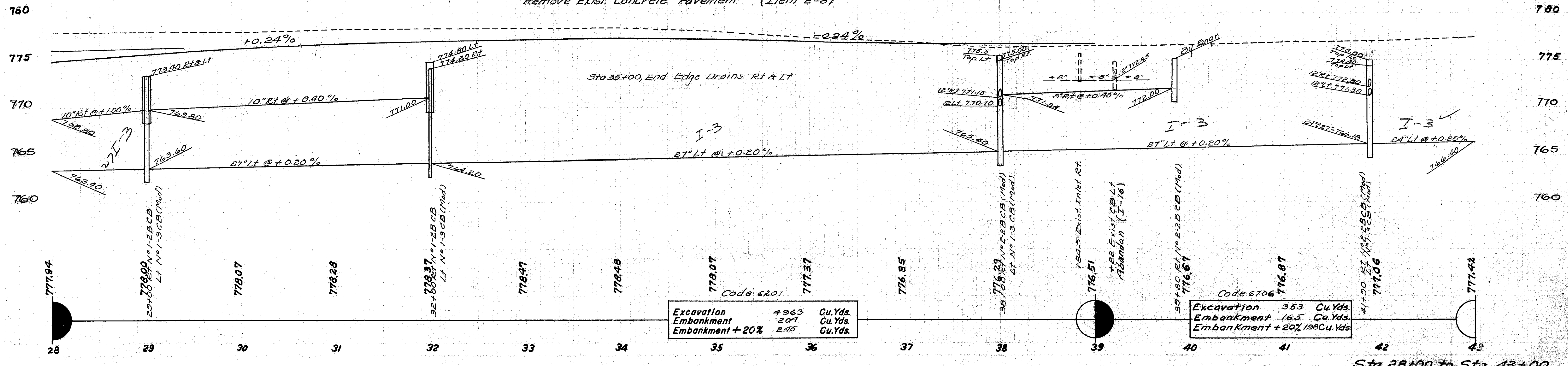
774.86	775.08	775.29	775.48	775.67	775.84	776.00	776.15	776.29	776.41	776.53	776.63	776.72	776.79	776.86	776.98	777.10	777.22	777.34	777.38	777.40	777.38	777.34	777.22	776.98	776.74	776.72
--------	--------	--------	--------	--------	--------	--------	--------	--------	--------	--------	--------	--------	--------	--------	--------	--------	--------	--------	--------	--------	--------	--------	--------	--------	--------	--------

100' U.C.
P.I. STA. 34+00
ELEV. 777.46

END NEW CONSTRUCTION Code 6201
Begin Salvage Code 6706

41490
38+00
890
596
298

Remove Exist. Concrete Pavement (Item E-8)



Code 6201
Excavation 4963 Cu.Yds.
Embankment 204 Cu.Yds.
Embankment +20% 245 Cu.Yds.

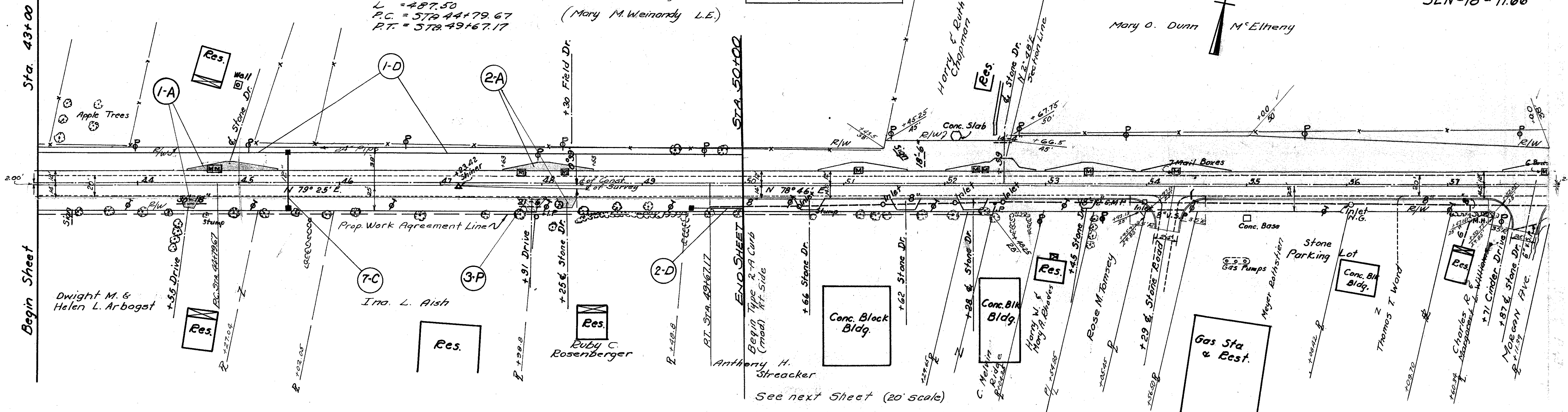
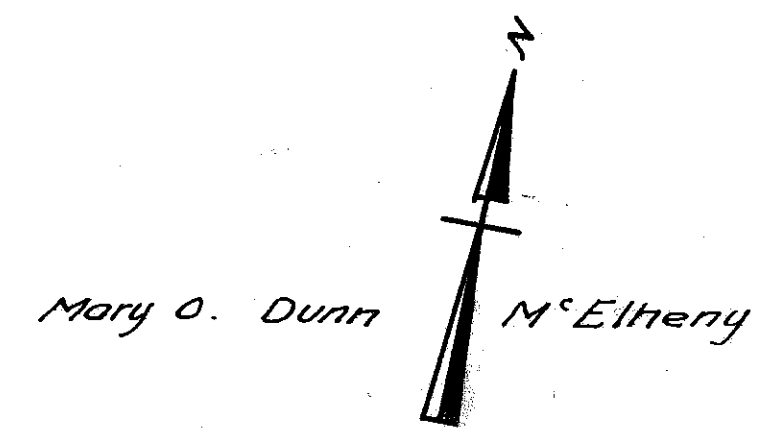
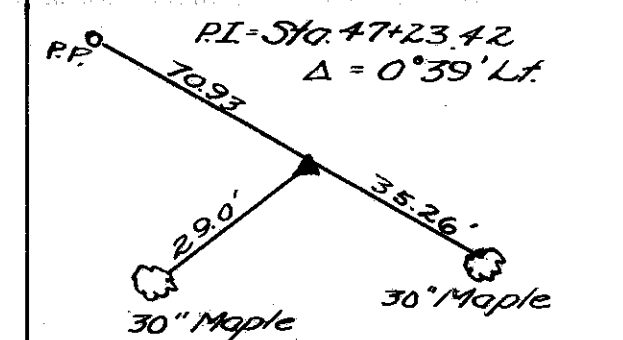
Code 6706
Excavation 353 Cu.Yds.
Embankment 165 Cu.Yds.
Embankment +20% 198 Cu.Yds.

Sta. 28+00 to Sta. 43+00

SENECA COUNTY
 SEN-224-(10.35-10.66)
 SEN-18-11.66

CURVE DATA
 P.I. STA. 47+23.42
 $\Delta = 0^{\circ} 39' \text{ LT.}$
 $D = 0^{\circ} 08'$
 $R = 42,971.85$
 $T = 243.75$
 $L = 0.69'$
 $E = 487.50$
 $P.C. = STA 44+79.67$
 $P.T. = STA 49+67.17$

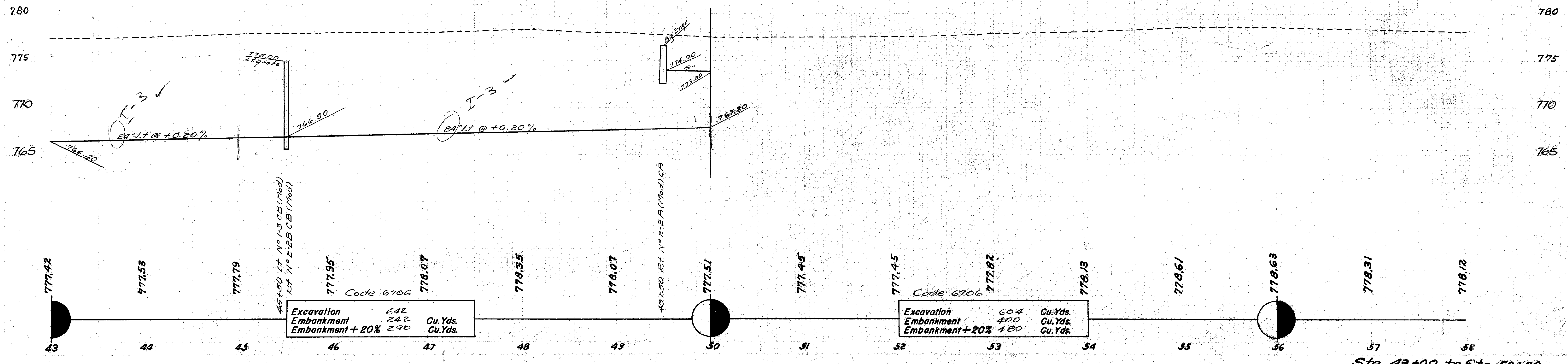
Leo M. Weinandy ET. AL
 (Mary M. Weinandy L.E.)



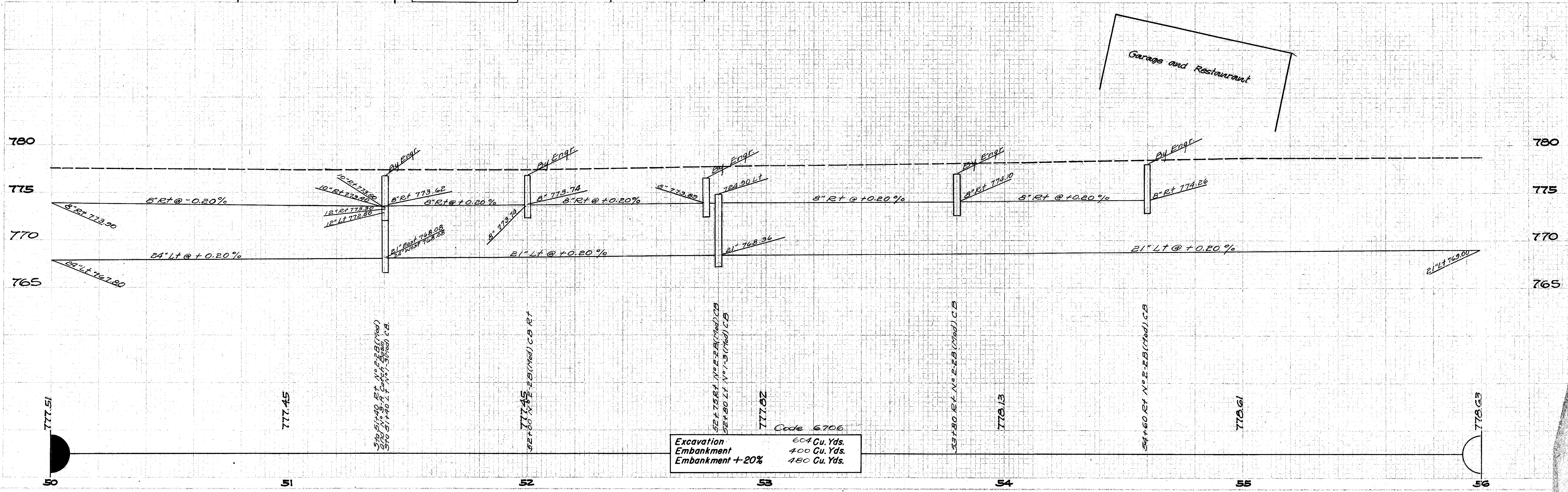
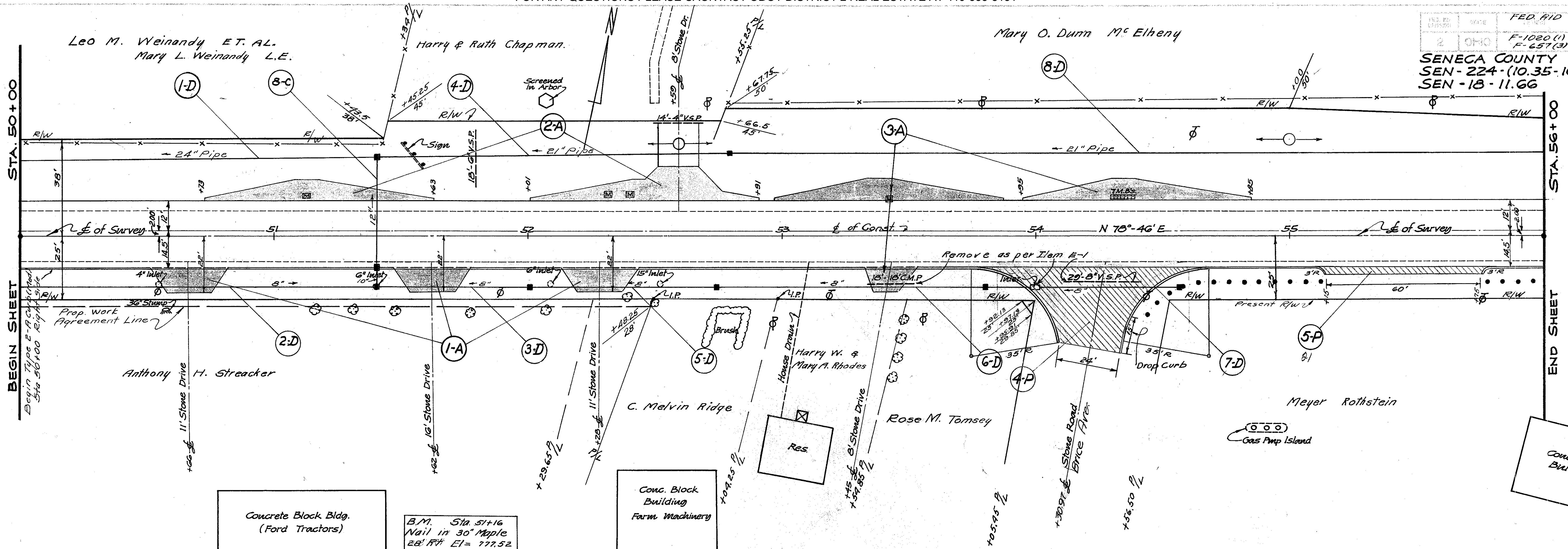
B.M. Sta. 44+32
 Nail in 30" Maple
 26' Rt. Elev. 777.68

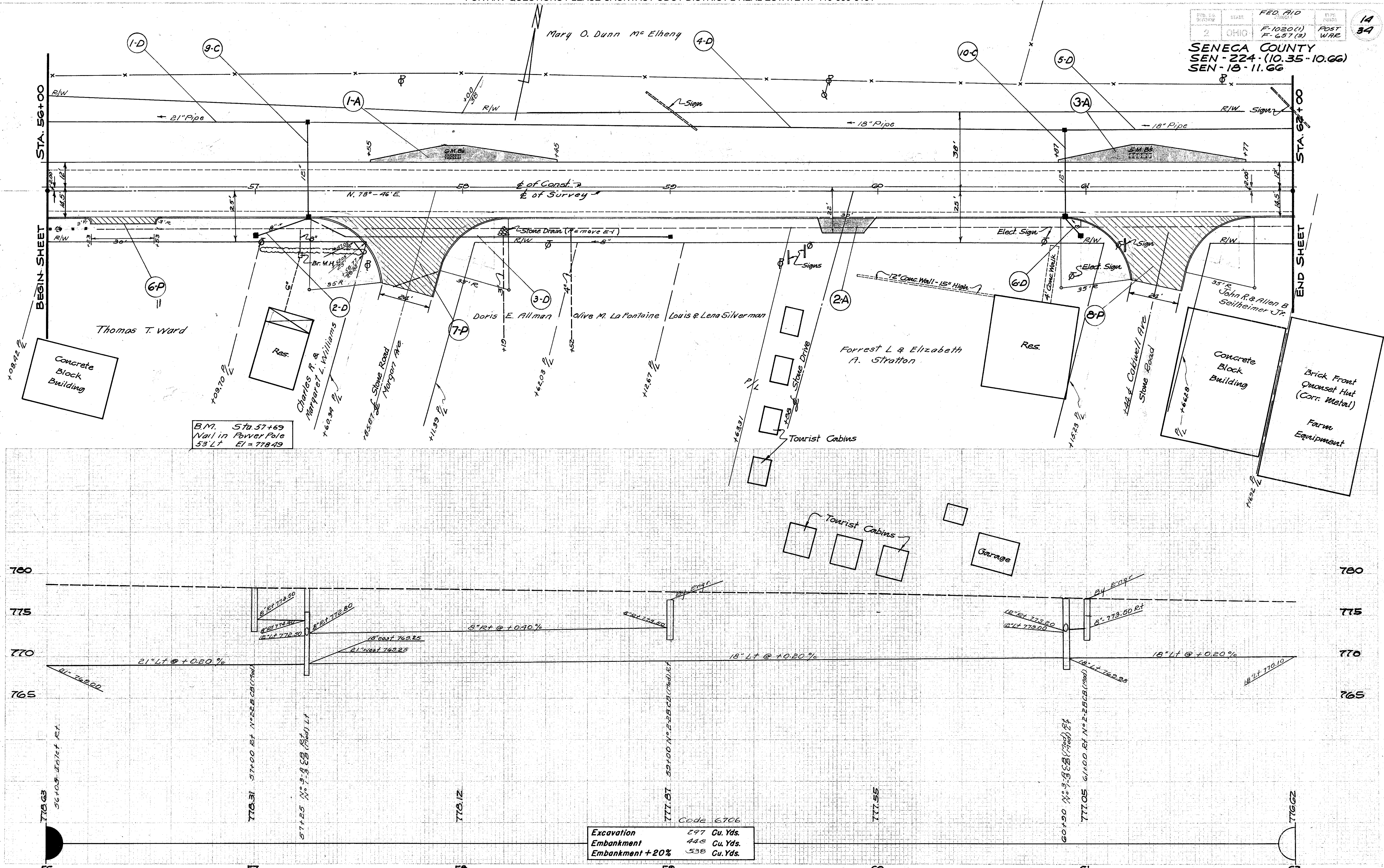
B.M. Sta. 51+16
 Nail in 30" Maple
 28' Rt. Elev. 777.52

B.M. Sta. 57+69
 Nail in Power Pole
 53' Lt. Elev. 778.49



Sta 43+00 to Sta 50+00





B.M. Sta 57+69
Nail in Power Pole
53' Lt El = 778.49

Code 6706

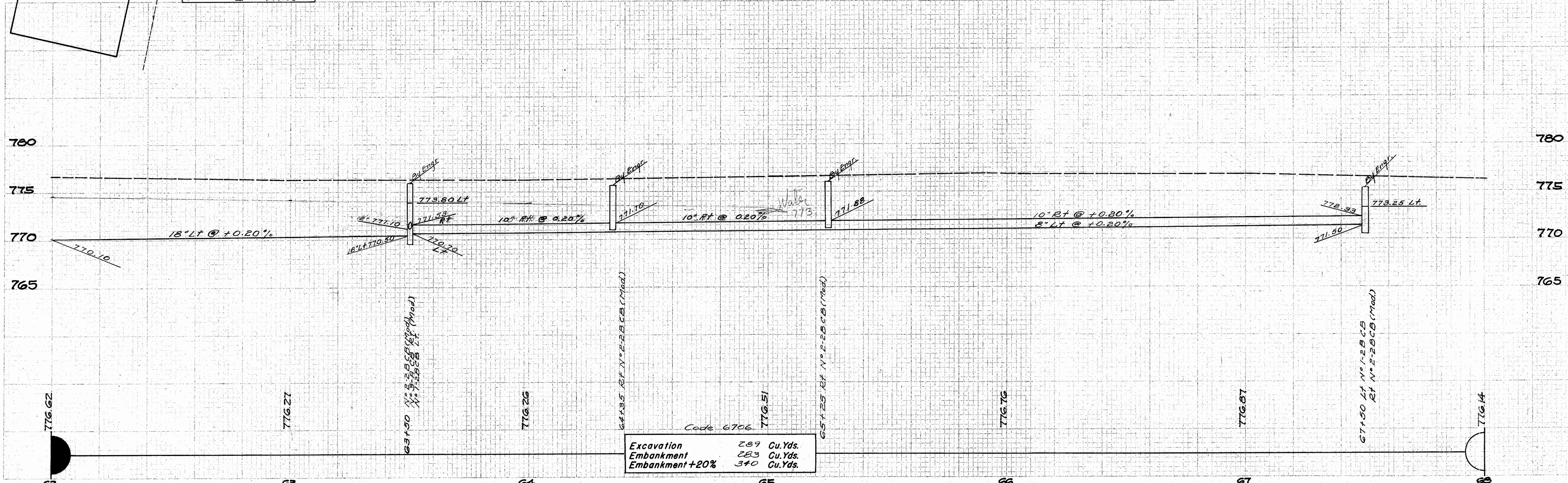
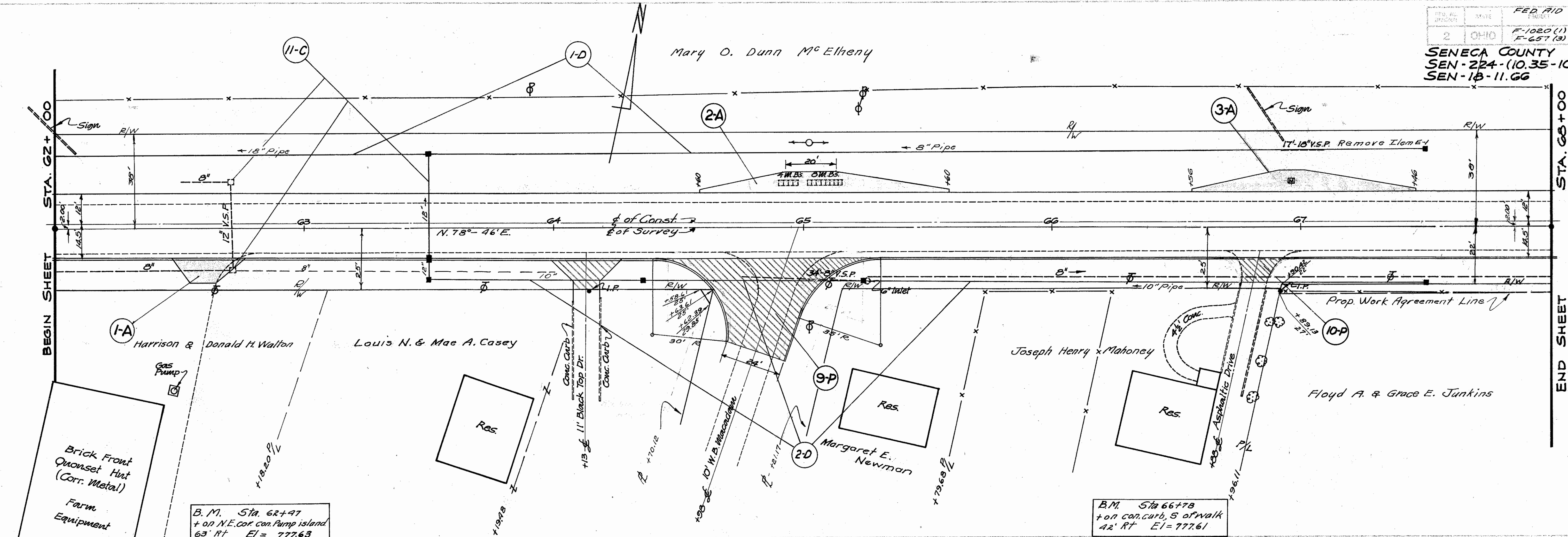
Excavation	297	Cu. Yds.
Embankment	448	Cu. Yds.
Embankment +20%	538	Cu. Yds.

STATE	FED. AID	POST
2 OHIO	F-1020 (1) F-657 (3)	ROAD

15
34

SENECA COUNTY
SEN-224-(10.35-10.66)
SEN-18-11.66

Mary O. Dunn M^c Elheny

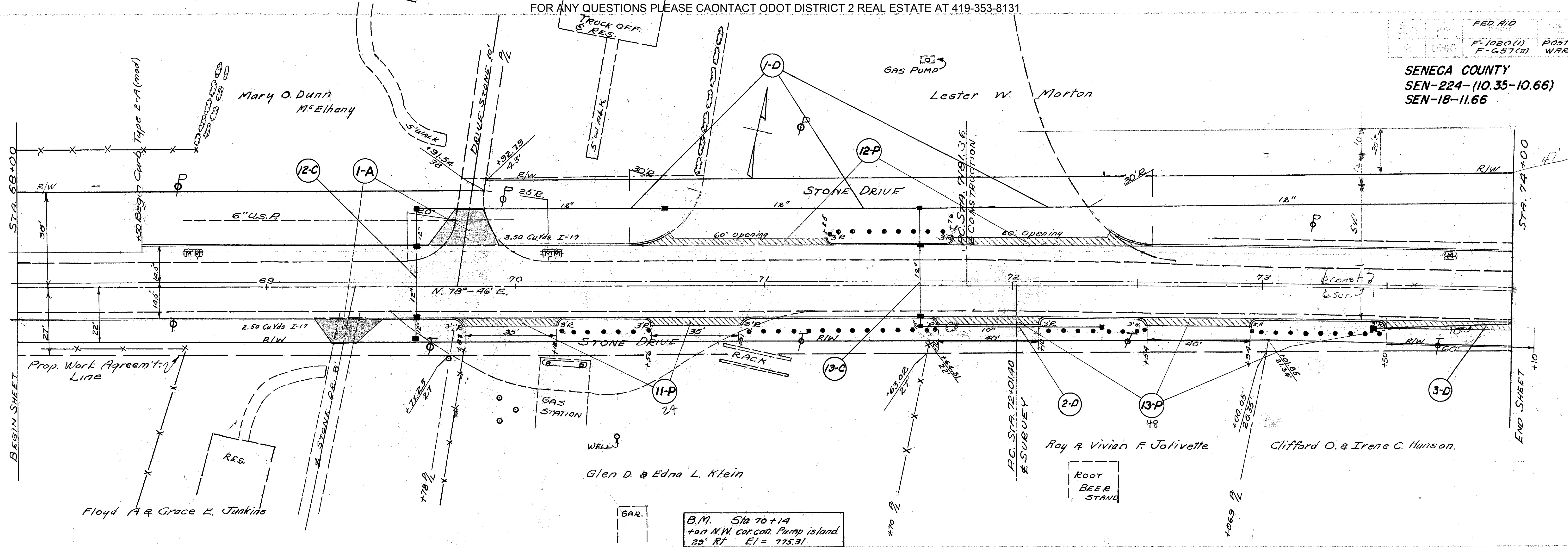


Excavation	289	Cu. Yds.
Embankment	283	Cu. Yds.
Embankment +20%	370	Cu. Yds.

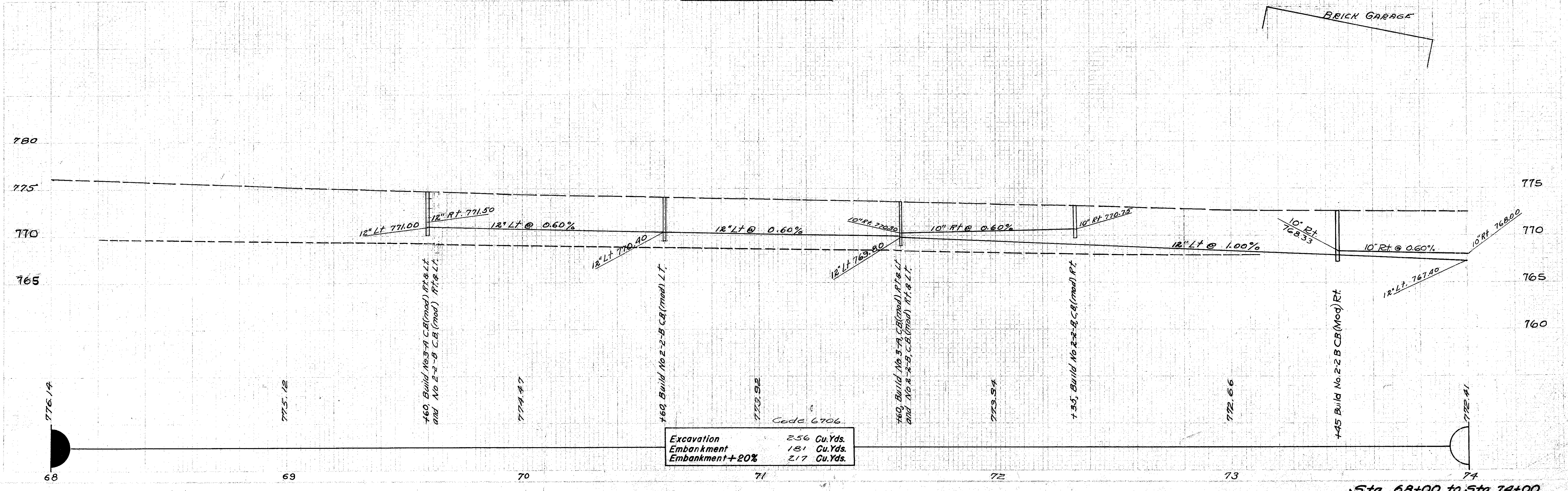
STA. 62+00 TO STA. 68+00

FOR ANY QUESTIONS PLEASE CONTACT ODOT DISTRICT 2 REAL ESTATE AT 419-353-8131

SENECA COUNTY
 SEN-224-(10.35-10.66)
 SEN-18-11.66



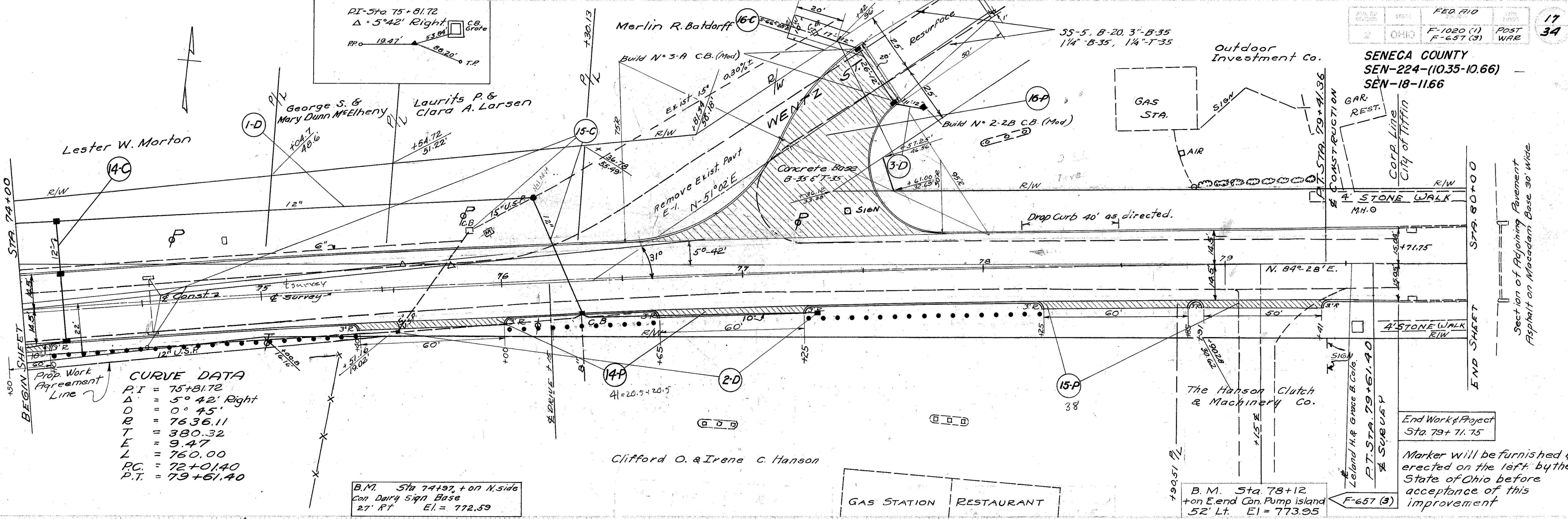
B.M. Sta 70+14
 on N.W. cor. con. Pump island
 29' Rt El = 775.31



Excavation	256 Cu.Yds.
Embankment	181 Cu.Yds.
Embankment +20%	217 Cu.Yds.

Sta. 68+00 to Sta. 74+00

SENECA COUNTY
SEN-224-(10.35-10.66)
SEN-18-11.66



CURVE DATA

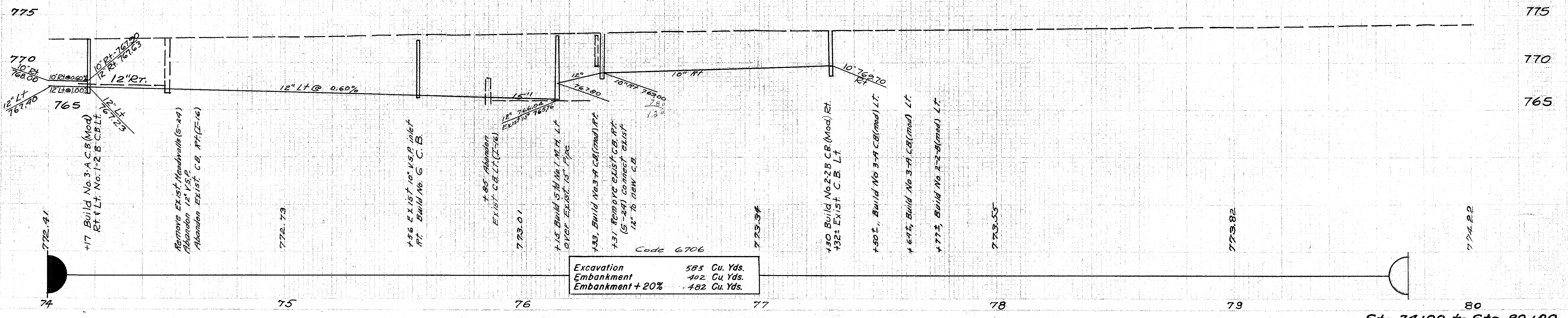
P.I. = 75+81.72
 Δ = 5° 42' Right
 D = 0° 45'
 R = 7636.11
 T = 380.32
 L = 9.47
 E = 760.00
 P.C. = 72+01.40
 P.T. = 79+61.40

B.M. Sta 74+97, on N. side
con Dairy sign Base
27' RT EI. = 772.59

B.M. Sta. 78+12
on E end Can. Pump island
52' Lt. EI = 773.95

End Work of Project
Sta. 79+71.75

Marker will be furnished &
erected on the left by the
State of Ohio before
acceptance of this
improvement



Excavation	583 Cu. Yds.
Embankment	402 Cu. Yds.
Embankment + 20%	482 Cu. Yds.