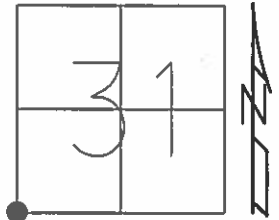


O.D.O.T. DISTRICT 2 SURVEY OFFICE (USE ONLY)

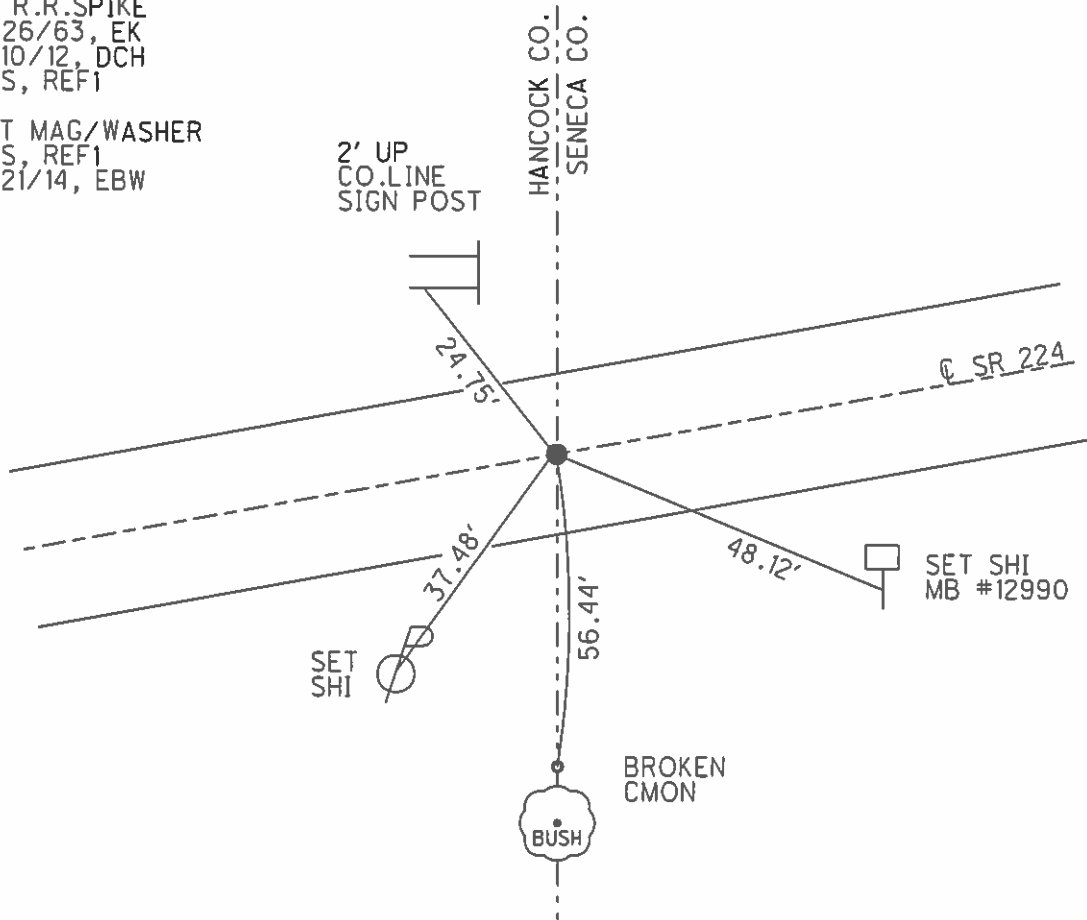
PERSONNEL _____ REFERENCE NO. 1 SHEET 1 OF 39
 NOTES RHOADES DATE 6/11/13 ROUTE SR 224
 H.C. ROUSOS WEATHER CLOUDY COUNTY SENECA
 R.C. WESTFALL TEMP. 66° TOWNSHIP LOUDON
 SECTION 31
 T 2 N R 13 E

TYPE MONUMENT R.R.SPIKE
~~ON SURFACE~~ - BELOW 10"
 LEFT - ☉ PAV'T - RIGHT ON
- TO - EDGE PAVEMENT
 S.L.M. 0+00
 Grid: Northing: 516064.480 Easting: 1714625.122



Δ = 0° 27' LT
 FD R.R.SPIKE
 11/26/63, EK
 2/10/12, DCH
 GPS, REF1

SET MAG/WASHER
 GPS, REF1
 5/21/14, EBW



PERSONNEL	TITLE	PERSONNEL	TITLE
COUNTY <u>Seneca</u> DATE <u>3-18-71</u>			
S. R. <u>224</u> WEATHER <u>cloudy</u>			
SEC. <u>0.00</u> TEMP. <u>32°</u>			
DESCRIPTION <u>Seneca - Hancock Co. Line to Tiffin</u>			JOB NO.
LEFT	CENTER LINE		RIGHT

did not find Δ

8552-A

"X" on rim M.H. N.E.

③

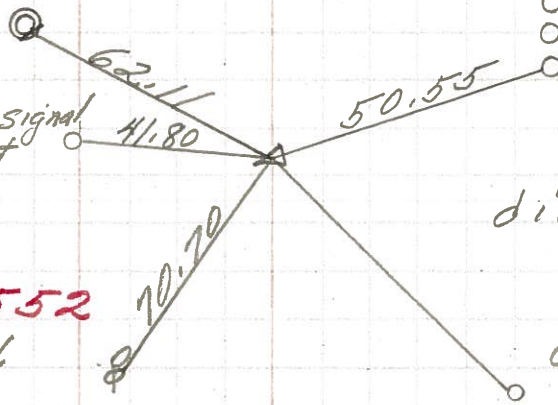
P.I.
41+56.13

$\Delta = 5^{\circ} 59' Rt.$
At R.R. track

15.55 S. of W. Rail Joint N. **8552**



C&O R.R. signal Post



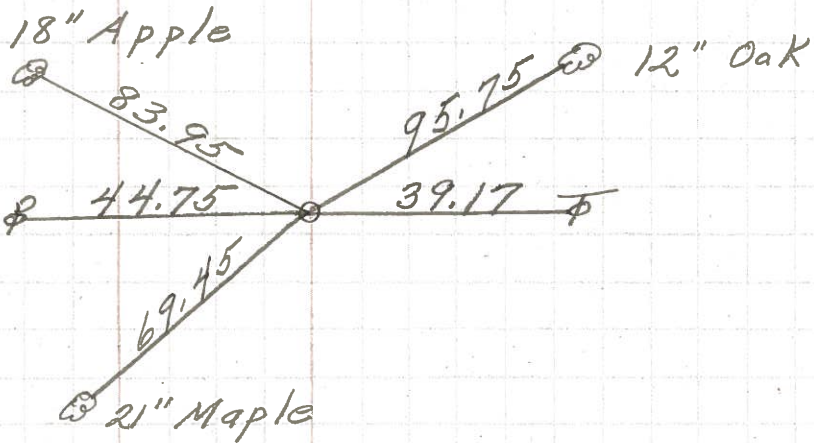
did not find

C. & O R.R. signal pole

②

P.O.T.
20+00
R.R. spk. on top

8551



18" Apple

12" Oak

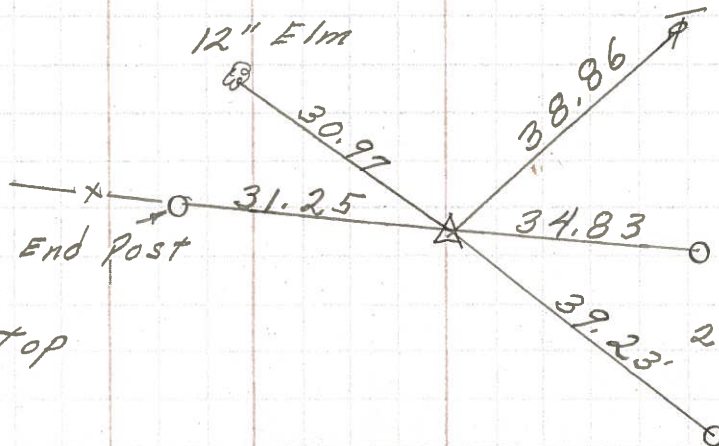
21" Maple

12" Elm

①

0+00
 $\Delta = 0^{\circ} 27' Lt.$
R.R. spk. on top

8550



End Post

Seneca, Co.
Hancock, Co.

2-Mon.

PERSONNEL TITLE PERSONNEL TITLE

E. Krabill
J. Kowalski
Brooks

COUNTY Seneca DATE 11-26-63

S. R. 224 WEATHER

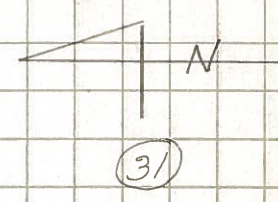
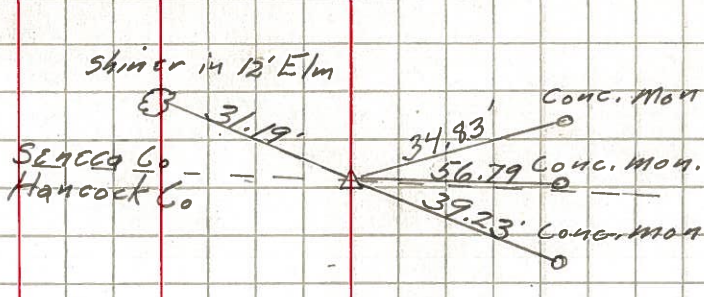
SEC. TEMP.

DESCRIPTION Hancock Co Line To Co Rd 591 JOB NO.

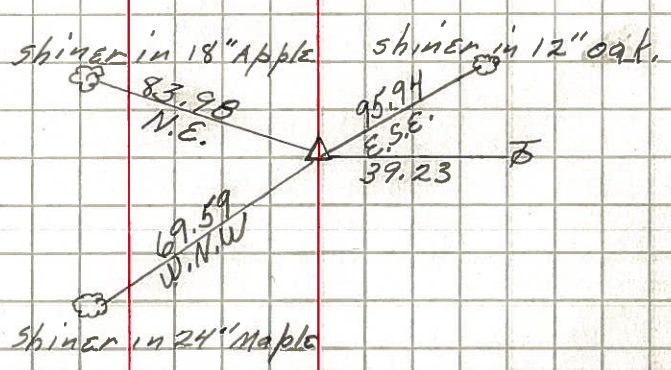
LEFT CENTER LINE RIGHT

0+00 #587
P.R. spike
11-26-63

(1)
Δ-0°-27' Lt



20+00 (2)
P.O.T
R.R. spike
11-26-63



41+56.13 #590
P.I
P.K. Nail
11-26-63

