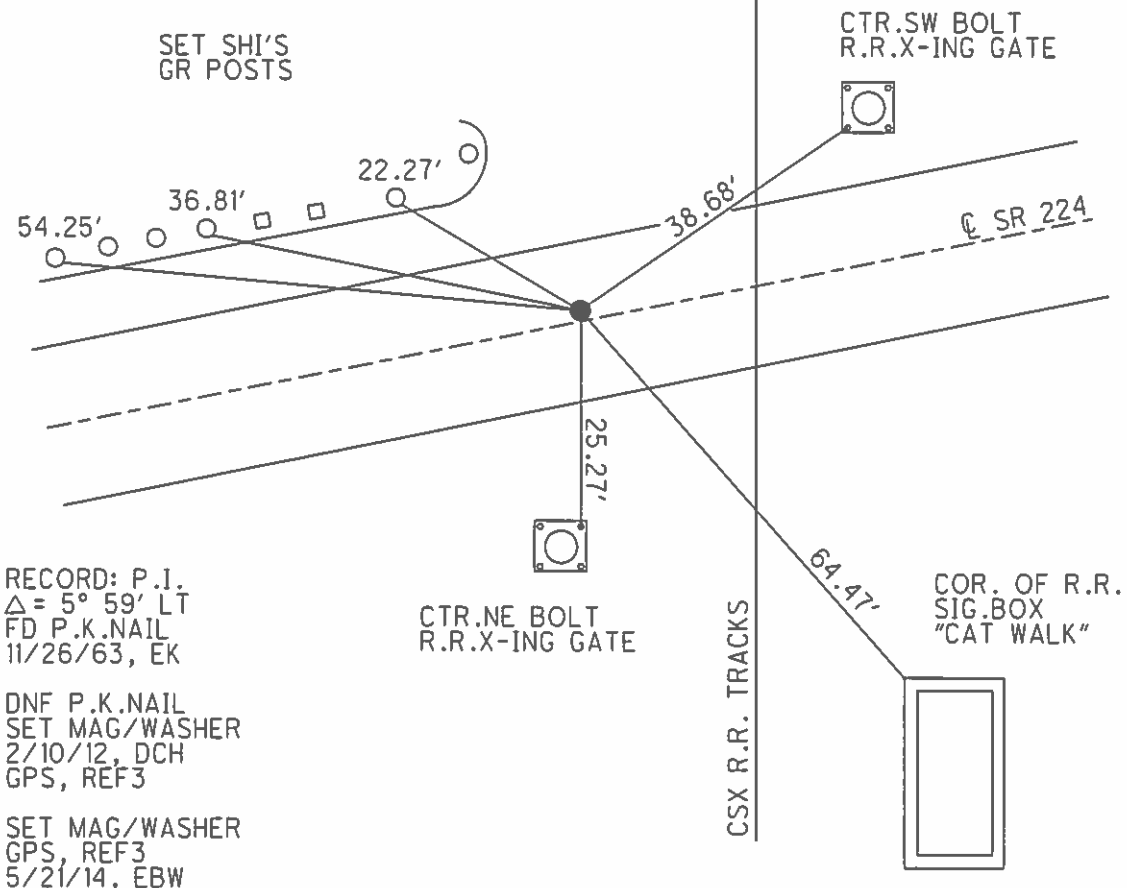
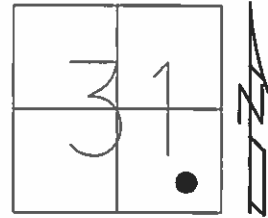


O.D.O.T. DISTRICT 2 SURVEY OFFICE (USE ONLY)

PERSONNEL _____ REFERENCE NO. 3 SHEET 3 OF 39
 NOTES RHOADES DATE 6/11/13 ROUTE SR 224
 H.C. ROUSOS WEATHER CLOUDY COUNTY SENECA
 R.C. WESTFALL TEMP. 66° TOWNSHIP LOUDON
 SECTION 31
 T 2 N R 13 E

TYPE MONUMENT MAG/WASHER
 ON SURFACE - ~~BELOW~~ ON _____
 LEFT - ☉ PAV'T - ~~RIGHT~~ 4.0'
8.5' TO LT EDGE PAVEMENT
 S.L.M. 41+55.84
 Grid: Northing: 516811.755 Easting: 1718713.262



RECORD: P.I.
 $\Delta = 5^\circ 59' \text{ LT}$
 FD P.K.NAIL
 11/26/63, EK

DNF P.K.NAIL
 SET MAG/WASHER
 2/10/12, DCH
 GPS, REF3

SET MAG/WASHER
 GPS, REF3
 5/21/14, EBW

PERSONNEL	TITLE	PERSONNEL	TITLE
COUNTY <u>Seneca</u> DATE <u>3-18-71</u>			
S. R. <u>224</u> WEATHER <u>cloudy</u>			
SEC. <u>0.00</u> TEMP. <u>32°</u>			
DESCRIPTION <u>Seneca - Hancock Co. Line to Tiffin</u> JOB NO. _____			
LEFT		CENTER LINE	
RIGHT			

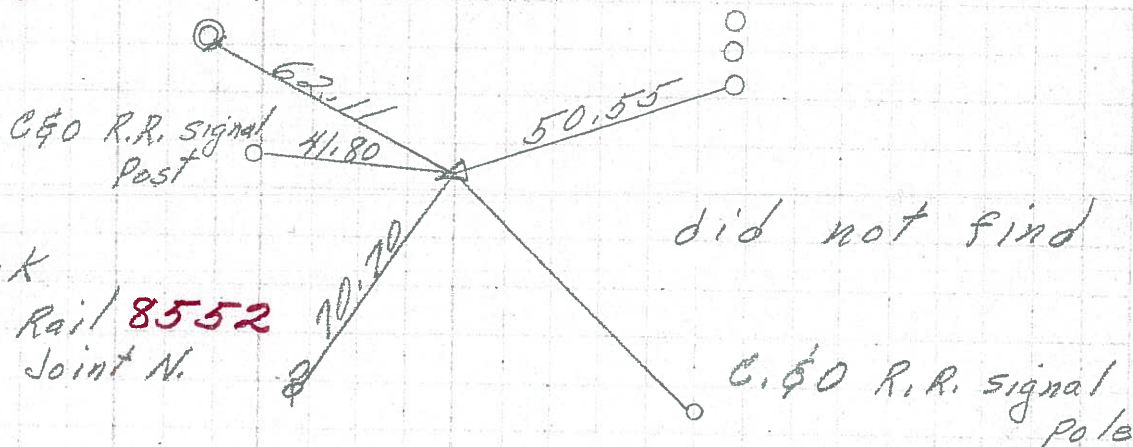
did not find Δ

8552-A

"X" on rim M.H. N.E.

③

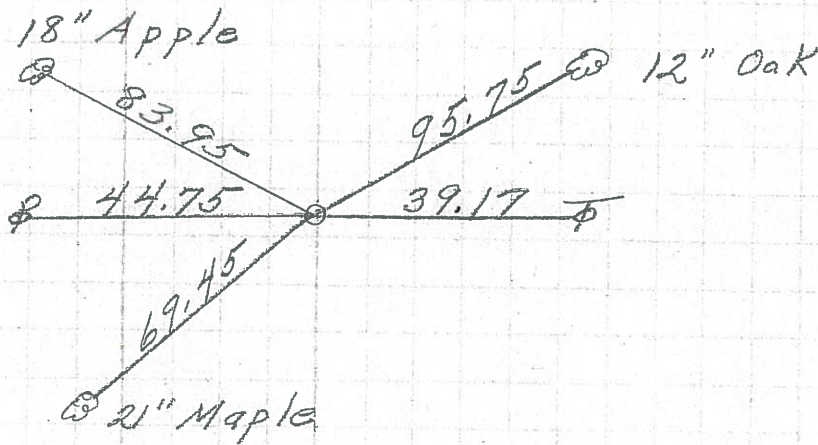
P.I.
41+56.13
 $\Delta = 5^{\circ} 59' \text{ Rt.}$
At R.R. track
15.55 S. of W. Rail **8552**
Joint N.



②

P.O.T.
20+00
R.R. spk. on top

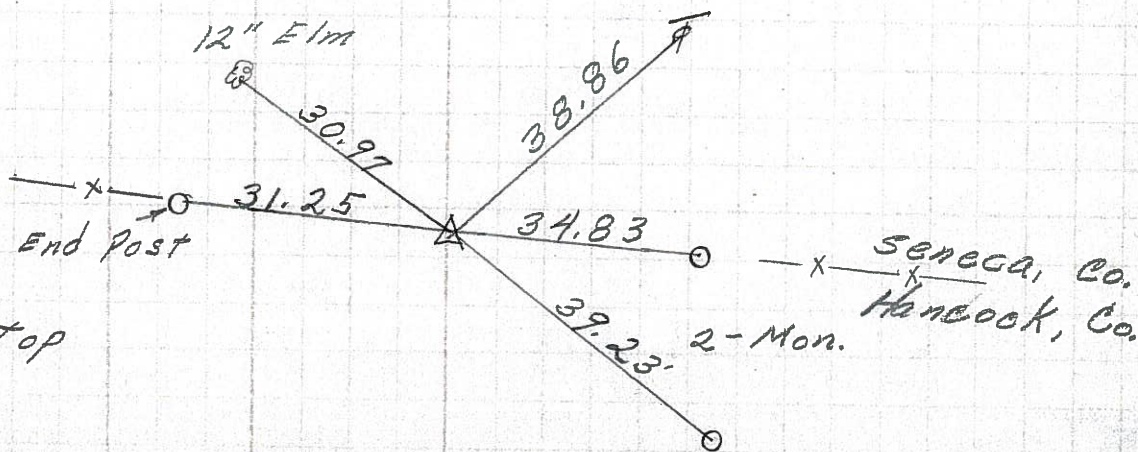
8551



①

0+00
 $\Delta = 0^{\circ} 27' \text{ Lt.}$
R.R. spk. on top

8550



PERSONNEL TITLE PERSONNEL TITLE
 E. Krabill _____
 J. Kowalski _____
 Brooks _____

COUNTY Seneca DATE 11-26-63
 S. R. 224 WEATHER _____
 SEC. _____ TEMP. _____

DESCRIPTION Hancock Co Line To Co Rd 591 JOB NO. _____
 LEFT CENTER LINE RIGHT

