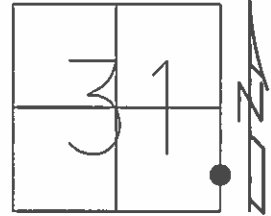


O.D.O.T. DISTRICT 2 SURVEY OFFICE (USE ONLY)

PERSONNEL _____ REFERENCE NO. 5 SHEET 4 OF 39
 NOTES RHOADES DATE 6/11/13 ROUTE SR 224
 H.C. ROUSOS WEATHER CLOUDY COUNTY SENECA
 R.C. WESTFALL TEMP. 66° TOWNSHIP LOUDON
 _____ SECTION 31
 _____ T 2 N R 13 E

TYPE MONUMENT P.K./WASHER
 ON SURFACE - ~~BELOW~~ ON _____
~~LEFT~~ - ☉ PAV'T - RIGHT 4.5'
 _____ TO _____ EDGE PAVEMENT
 S.L.M. 55+19.91

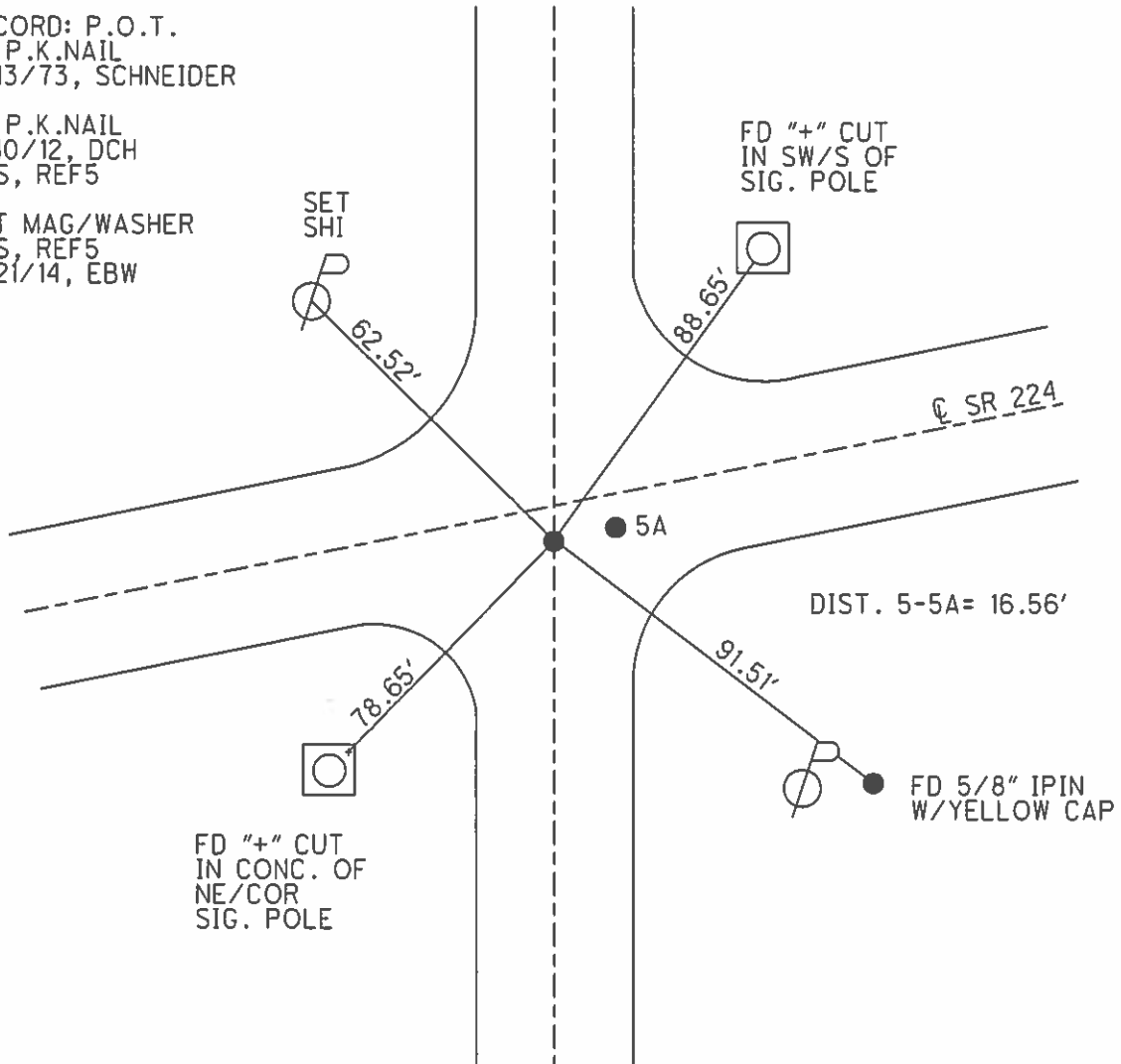


Grid: Northing: 516917.099 Easting: 1720073.236

RECORD: P.O.T.
 FD P.K.NAIL
 3/13/73, SCHNEIDER

FD P.K.NAIL
 2/10/12, DCH
 GPS, REF5

SET MAG/WASHER
 GPS, REF5
 5/21/14, EBW



PERSONNEL	TITLE	PERSONNEL	TITLE

COUNTY Seneca DATE 3-17-73
 S. R. 224 WEATHER _____
 SEC. _____ TEMP. _____

DESCRIPTION _____ LEFT _____ CENTER LINE _____ RIGHT _____ JOB NO. _____

checked 11/08/78
Temp 37°

"X" on conc-bases of Traffic Light Posts

5A

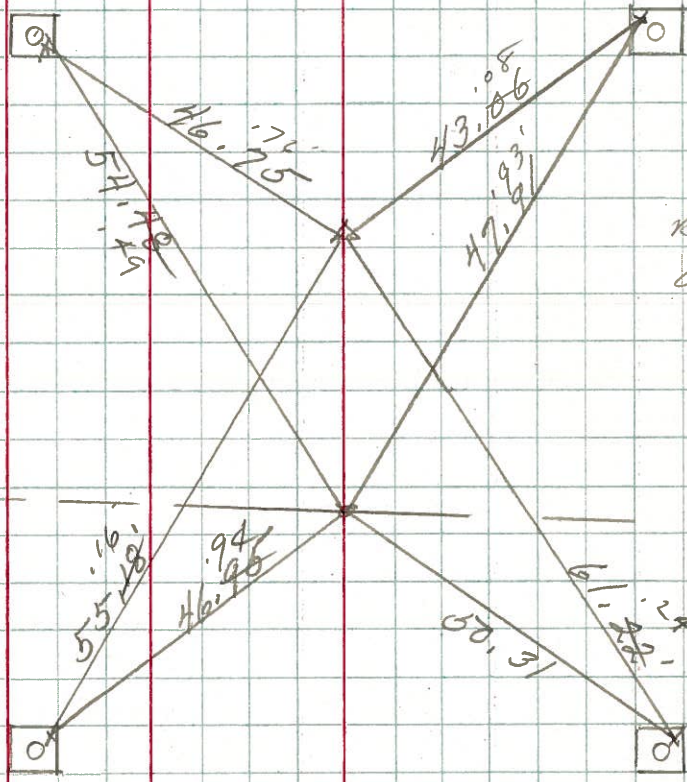
P.I.
55+35.51
small spk.

7/31/79
76°
overcast
Reset P.K's,
Washers

5

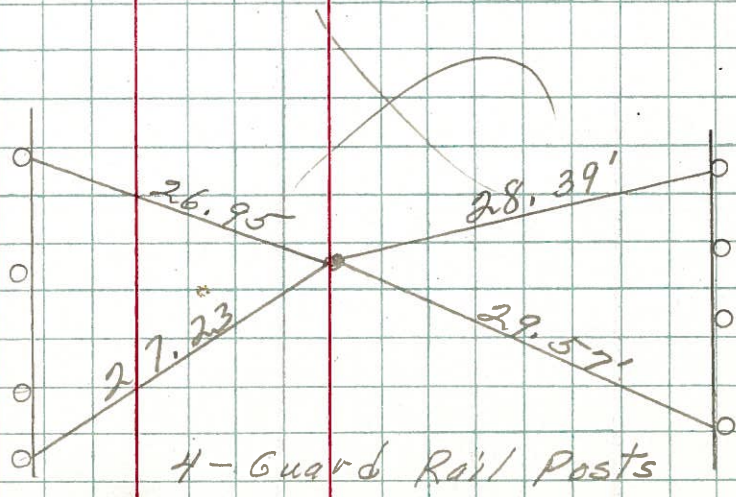
P.O.T.
55+18
P.K. Nail

U.S. # 23



6

Line only
P.K. Nail



4-Guard Rail Posts

PERSONNEL TITLE PERSONNEL TITLE
Schneider

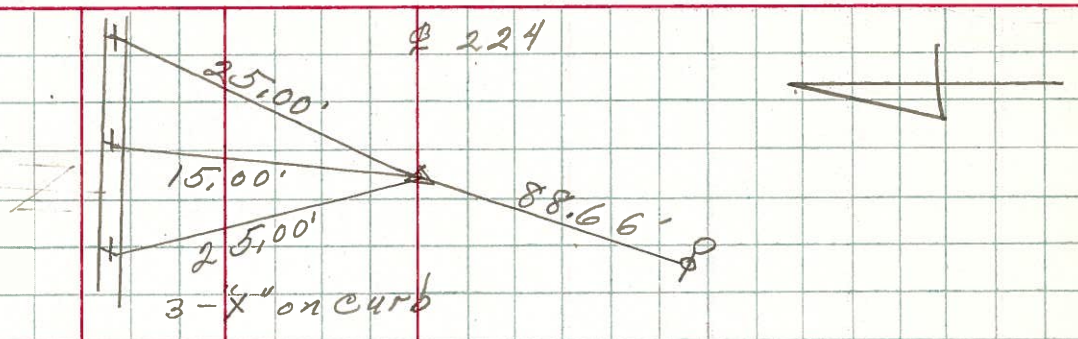
COUNTY Seneca DATE 3-13-73

S. R. 224 WEATHER cloudy

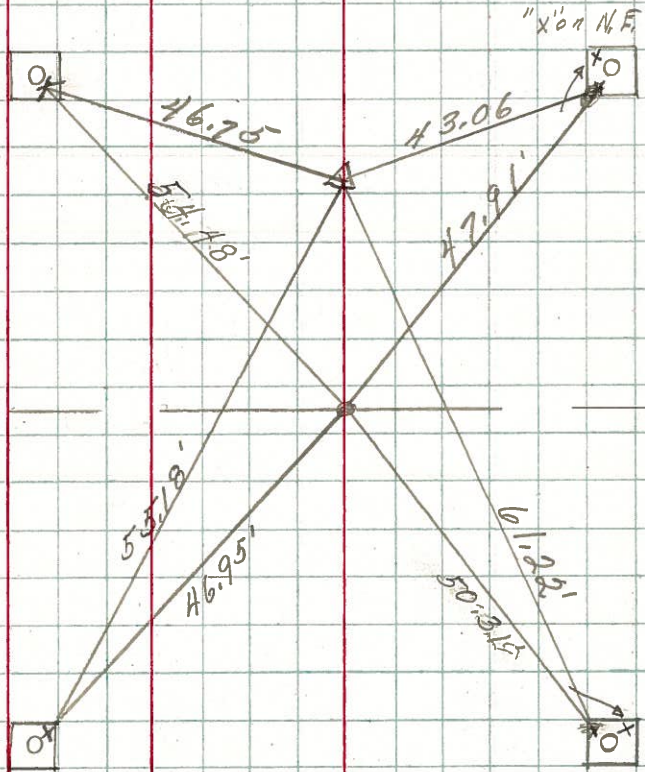
SEC. Det. U.S. 224 E 23 TEMP. 45°

DESCRIPTION Ties LEFT CENTER LINE RIGHT JOB NO.

(6)
P.I.
58+04.50
R.R. spk.



(5-A)
P.I.
55+35.51 (5)
Small spk.
 $\Delta = 5^{\circ}05' Rt.$



P.O.T.
55+18.
P.K. Nail

4" on conc-bases of Traffic Light posts

~~(4)~~

Line only
P.K. Nail

