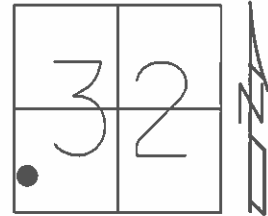


O.D.O.T. DISTRICT 2 SURVEY OFFICE (USE ONLY)

PERSONNEL _____ REFERENCE NO. 6 SHEET 6 OF 39
 NOTES RHOADES DATE 6/11/13 ROUTE SR 224
 H.C. ROUSOS WEATHER CLOUDY COUNTY SENECA
 R.C. WESTFALL TEMP. 66° TOWNSHIP LOUDON
 _____ SECTION 32
 _____ T 2 N R 13 E

TYPE MONUMENT P.K.NAIL
 ON SURFACE - ~~BELOW~~ ON _____
~~LEFT~~ - ℄ PAV'T - RIGHT 0.6'
 - TO - EDGE PAVEMENT
 S.L.M. 58+05.50

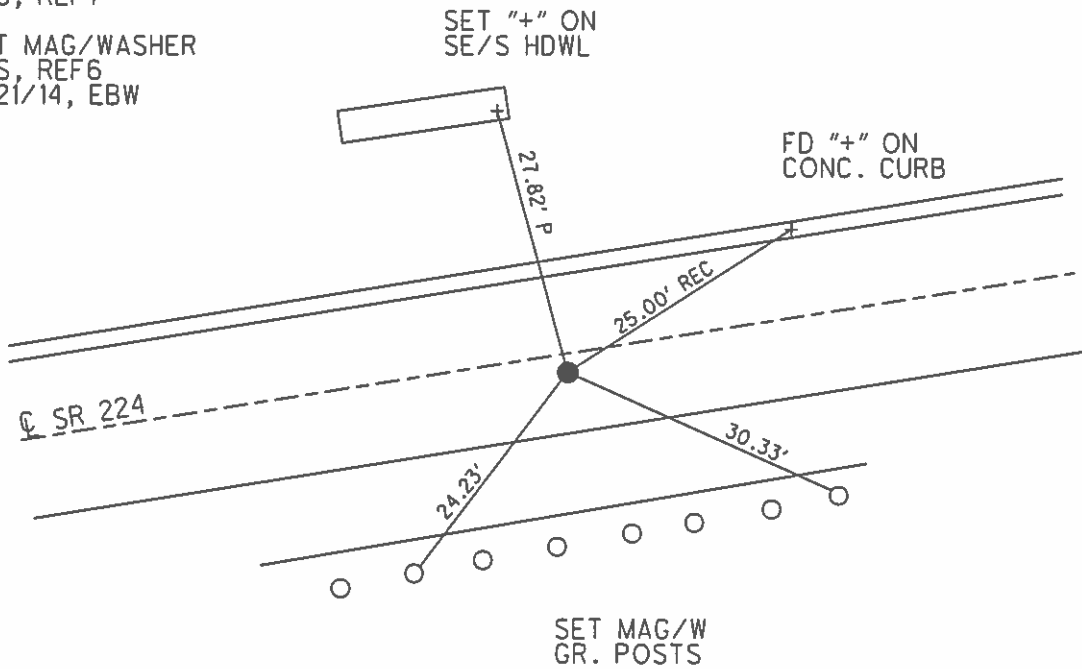


Grid: Northing: 516962.420 Easting: 1720355.162

RECORD: P.1.
 FD R.R.SPIKE
 11/26/63, EK

FD P.K.NAIL
 2/10/12, DCH
 GPS, REF7

SET MAG/WASHER
 GPS, REF6
 5/21/14, EBW



PERSONNEL TITLE PERSONNEL TITLE
Schneider

COUNTY Seneca DATE 3-13-73

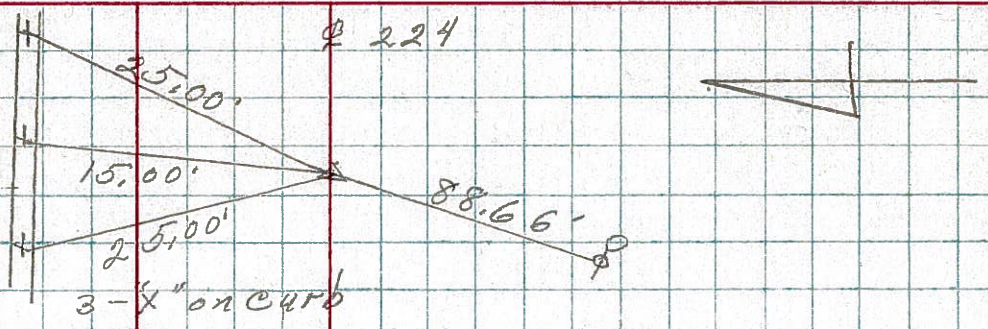
S. R. 224 WEATHER cloudy

SEC. Det. U.S. 224 & 23 TEMP. 45°

DESCRIPTION Ties LEFT CENTER LINE RIGHT JOB NO.

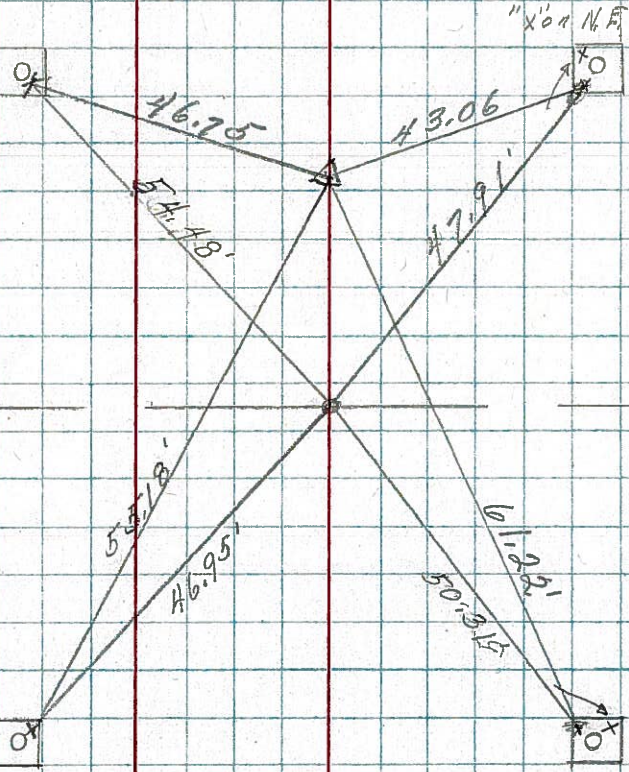
(6)

P.I.
58+04.50
R.R. spk.



(5-A)

P.I.
55+35.51 (5)
Small spk.
 $\Delta = 5^{\circ} 05' \text{ Rt.}$

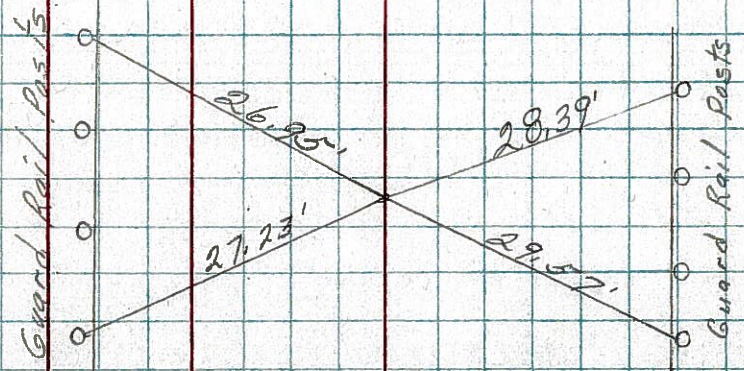


P.O.T.
55+18.
P.K. Nail

"X" on conc. bases of Traffic Light posts

(X)

Line only
P.K. Nail



PERSONNEL TITLE PERSONNEL TITLE

E. Krabill
J. Kowaleski
Brooks

COUNTY Seneca

DATE

S. R. 227

WEATHER

SEC.

TEMP.

DESCRIPTION

LEFT

CENTER LINE

RIGHT

JOB NO.

