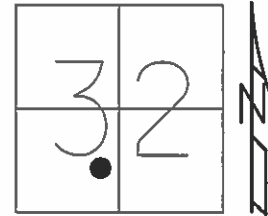


O.D.O.T. DISTRICT 2 SURVEY OFFICE (USE ONLY)

PERSONNEL \_\_\_\_\_ REFERENCE NO. 7 SHEET 7 OF 39  
 NOTES RHOADES DATE 6/11/13 ROUTE SR 224  
 H.C. ROUSOS WEATHER CLOUDY COUNTY SENECA  
 R.C. WESTFALL TEMP. 66° TOWNSHIP LOUDON  
 \_\_\_\_\_ SECTION 32  
 \_\_\_\_\_ T 2 N R 13 E

TYPE MONUMENT P.K./WASHER  
 ON SURFACE - ~~BELOW~~ ON  
 LEFT - ☉ PAV'T - RIGHT ON  
- TO - EDGE PAVEMENT  
 S.L.M. 74+46.35



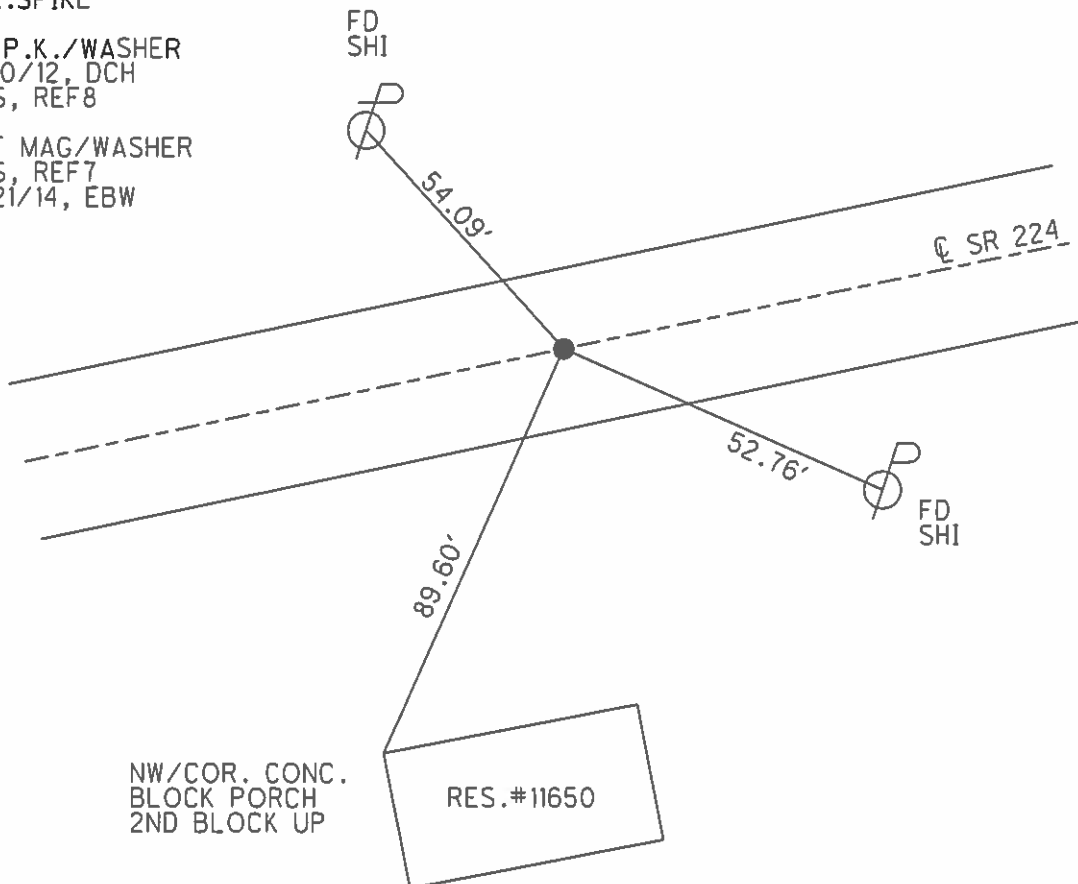
Grid: Northing: 517268.008 Easting: 1721967.307

RECORD: P.I.  
 $\Delta = 0^\circ 33' RT$   
 STA. 74+46  
 FD P.K./WASHER  
 3/30/92, CHENEY  
 PREVIOUS MON:  
 R.R. SPIKE

RES.#11625

FD P.K./WASHER  
 2/10/12, DCH  
 GPS, REF 8

SET MAG/WASHER  
 GPS, REF 7  
 5/21/14, EBW

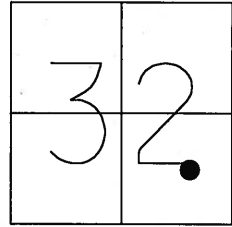


O.D.O.T. DISTRICT 2 SURVEY OFFICE (USE ONLY)

PERSONNEL \_\_\_\_\_ REFERENCE NO. 8 SHEET \_\_\_\_\_ OF \_\_\_\_\_  
 NOTES ROUSOS DATE 6/30/2011 ROUTE US 224  
 H.C. ROUSOS WEATHER SUNNY COUNTY SENECA  
 R.C. HOMAN TEMP. 75° F TOWNSHIP LOUDON  
 \_\_\_\_\_ SECTION 32  
 \_\_\_\_\_ T 2 N R 13 E

TYPE MONUMENT RRSPIKE  
~~ON SURFACE~~ - BELOW 3.5"  
 LEFT - ☉ PAV'T - RIGHT ON  
 - TO - EDGE PAVEMENT  
 S.L.M. 74+46 ( RECORD )

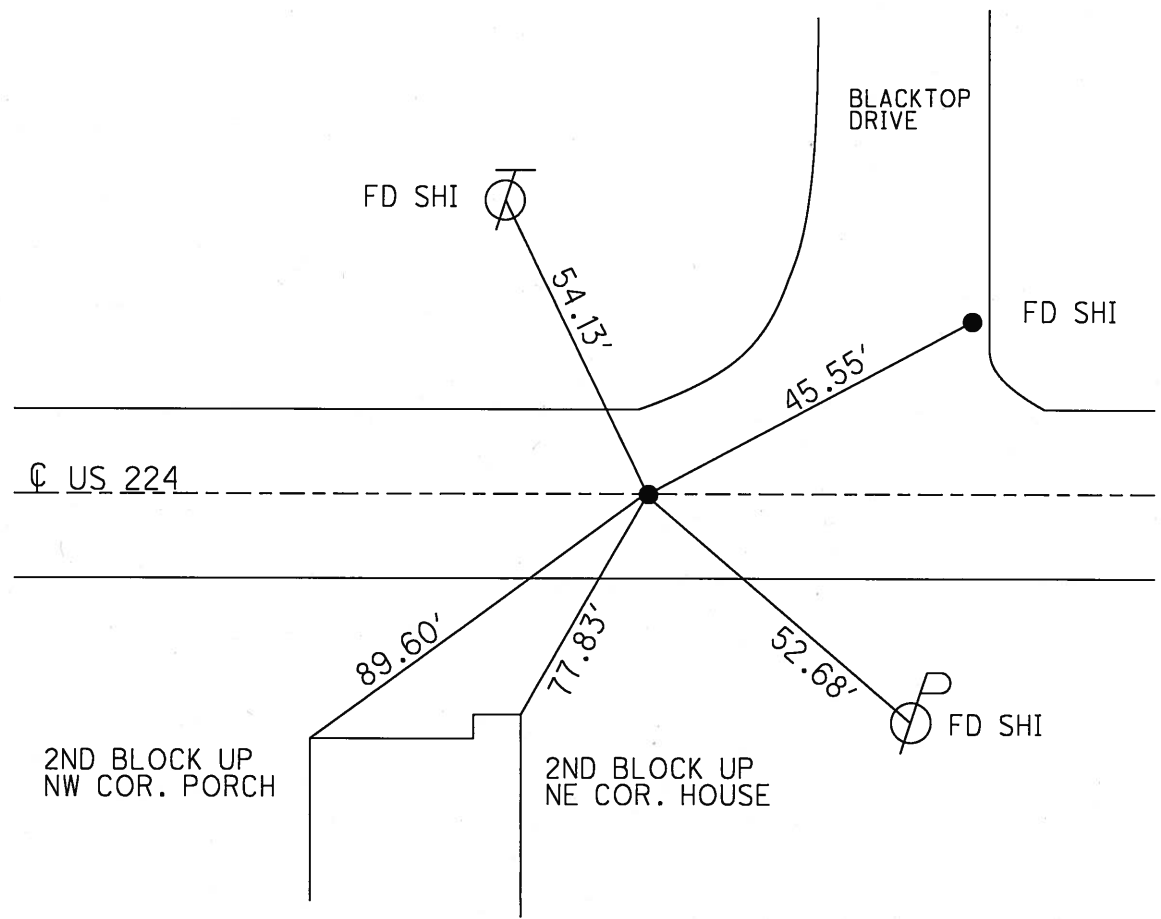
⑦



GRID: NORTHING: 517267.959 EASTING: 1721967.245

RECORD:  
 STA. 74+46  
 PI Δ=0 33' RT

PREVIOUS MONUMENT:  
 RR SPK  
 FD. PK/WASHER  
 3-30-1992



OD.O.T. DISTRICT 2 SURVEY OFFICE

County SENECA

Date 3/30/1992

Township LOUDON

Weather CLOUDY - DRIZZLE

Section 32

Temp. 35°

T2N, R13E

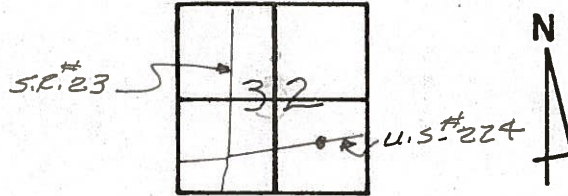
Personnel CHENEY - M

BARBOUR - H. TAPE

RIPPLE - R. TAPE

GEYMAN - FLAG

7



STA. 74+46 (RECORD)

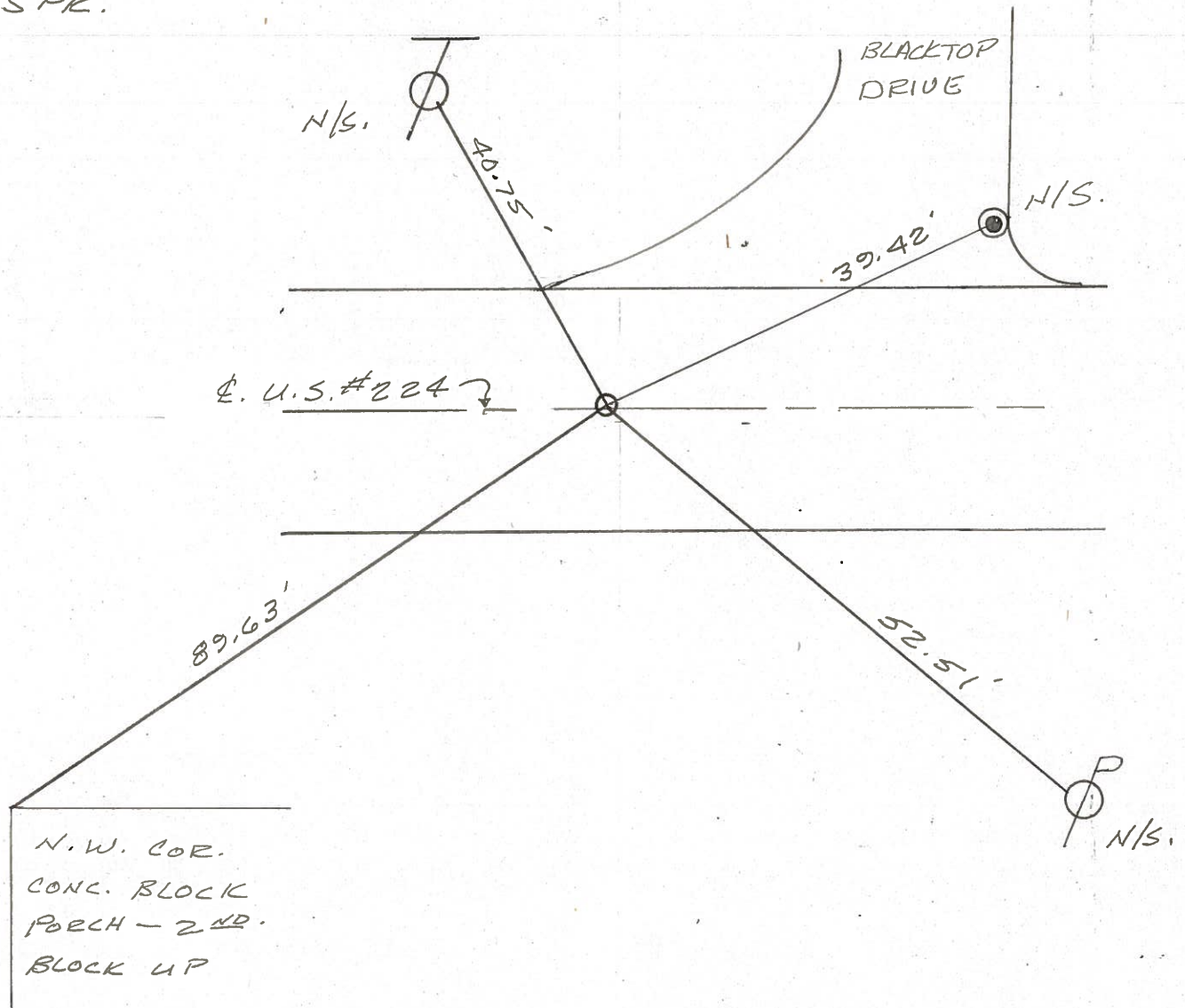
FD. PK./WASHER

P.I. Δ = 0° - 33' RT. (RECORD)

PREVIOUS MONUMENT:

R.P. SPK.

1 STY.
BRICK
# 1162



PERSONNEL TITLE PERSONNEL TITLE

COUNTY Seneca DATE 3-18-71

S. R. 224 WEATHER Cloudy

SEC. 0.00 TEMP. 35°

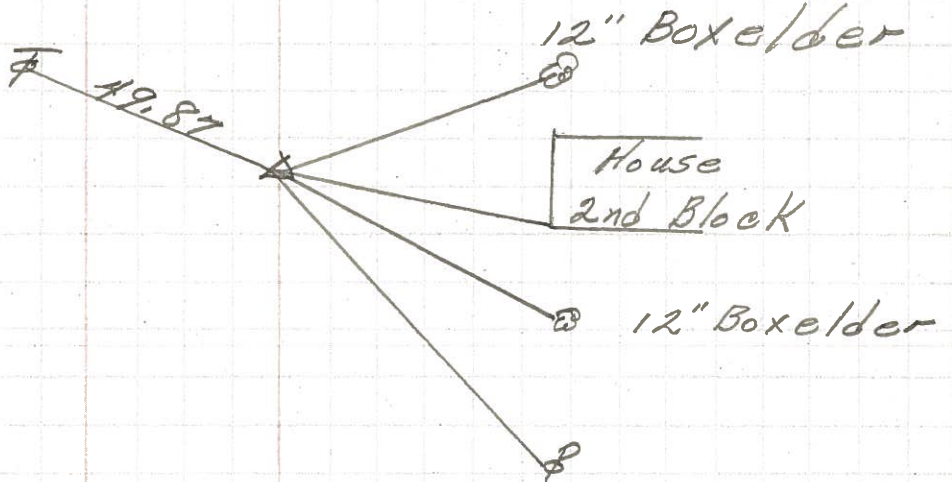
DESCRIPTION Seneca-Hancock Co. Line to Tiffin JOB NO. \_\_\_\_\_

LEFT CENTER LINE RIGHT

9

P.I.  
82+39.25  
 $\Delta = 0^\circ 39' Lt.$

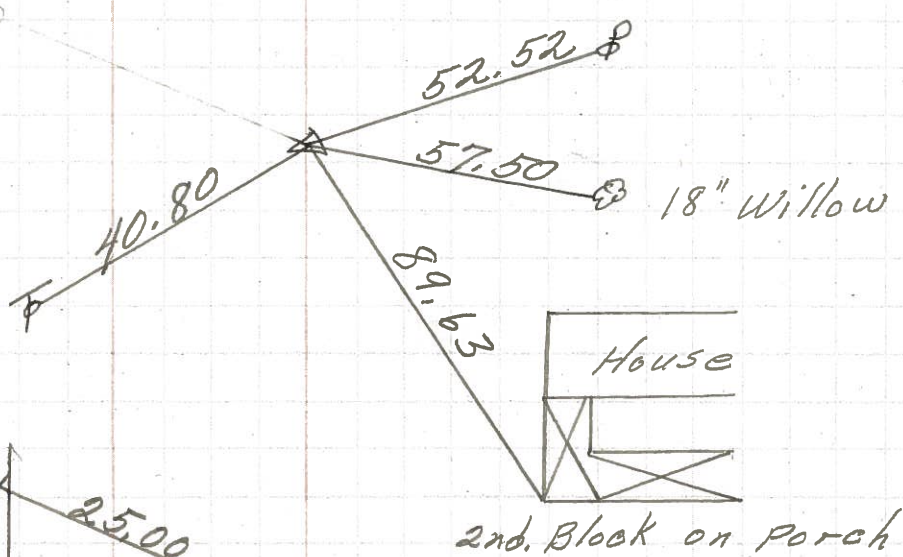
8555



7

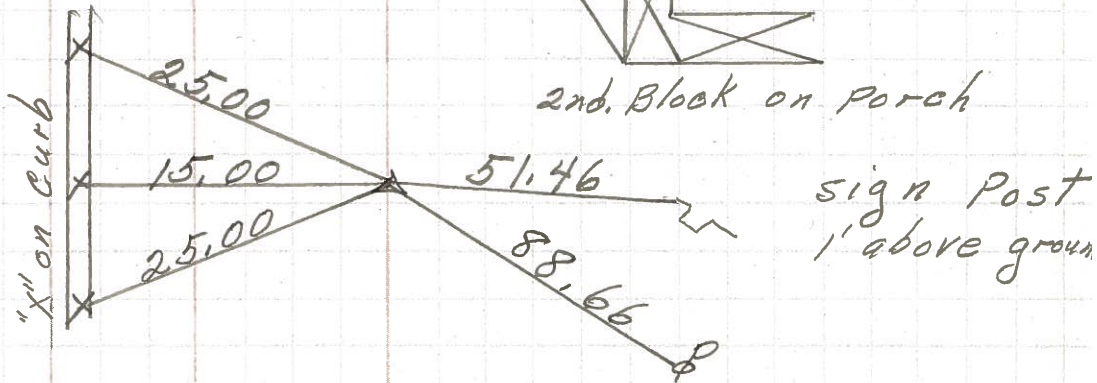
P.I.  
74+46  
 $\Delta = 0^\circ 33' Rt.$   
R. R. spk.  
on top

8554



P.I.  
 $\Delta = 1^\circ 18' Lt.$   
R. R. spk  
on top

8553



U.S. 23 & S.R. 199

PERSONNEL	TITLE	PERSONNEL	TITLE	COUNTY	DATE
E. Krab. II				Seneca	
J. Kowaleski				S. R. 227	WEATHER
Brooks				SEC.	TEMP.

DESCRIPTION	LEFT	CENTER LINE	RIGHT	JOB NO.
-------------	------	-------------	-------	---------

