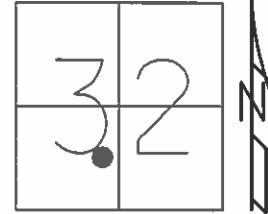


O.D.O.T. DISTRICT 2 SURVEY OFFICE (USE ONLY)

PERSONNEL _____ REFERENCE NO. 8 SHEET 8 OF 39
 NOTES RHOADES DATE 6/11/13 ROUTE SR 224
 H.C. ROUSOS WEATHER CLOUDY COUNTY SENECA
 R.C. WESTFALL TEMP. 66° TOWNSHIP LOUDON
 _____ SECTION 32
 _____ T 2 N R 13 E

TYPE MONUMENT MAG NAIL
 ON SURFACE - ~~BELOW~~ ON _____
~~LEFT~~ - ☉ PAV'T - RIGHT 1.0'
 - TO - EDGE PAVEMENT
 S.L.M. 82+15.08

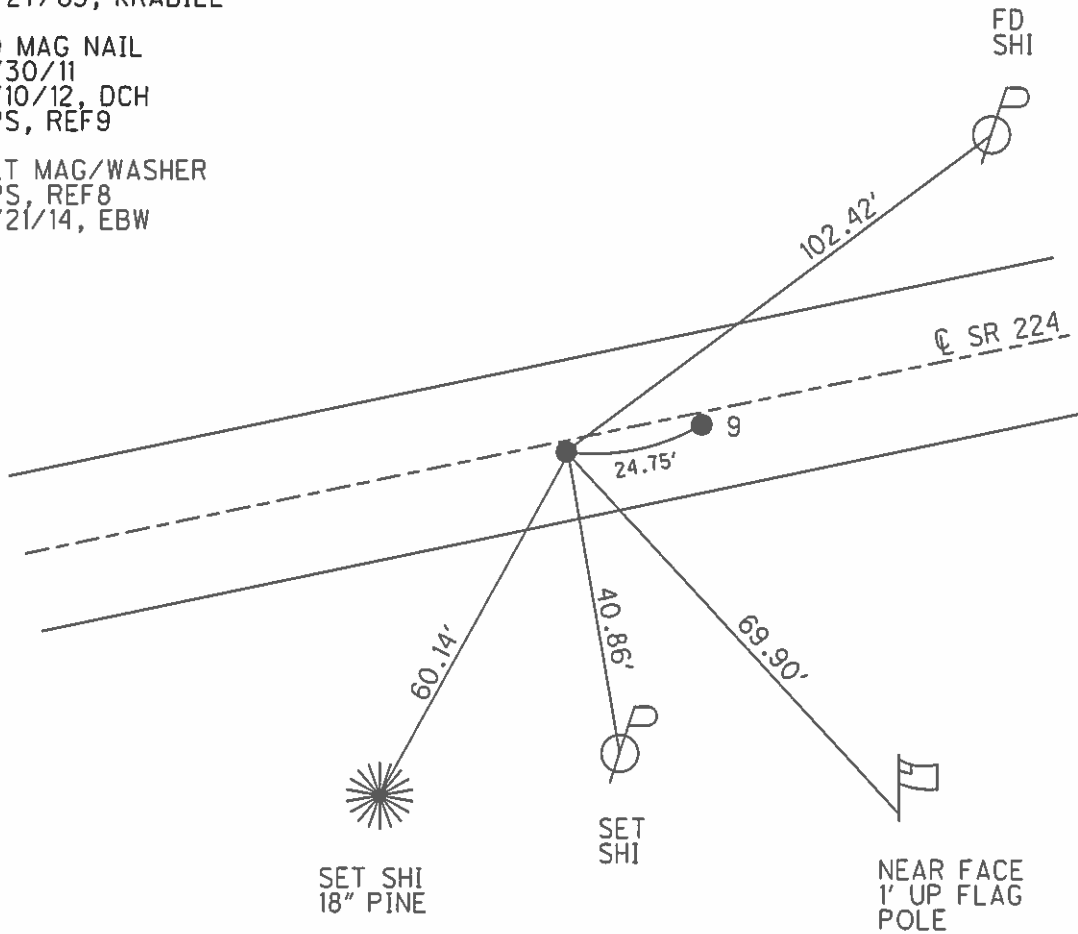


Grid: Northing: 517403.850 Easting: 1722723.938

RECORD:
 FD R.R. SPIKE
 11/27/63, KRABILL

FD MAG NAIL
 6/30/11
 2/10/12, DCH
 GPS, REF9

SET MAG/WASHER
 GPS, REF8
 5/21/14, EBW

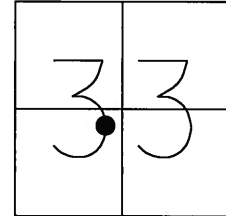


O.D.O.T. DISTRICT 2 SURVEY OFFICE (USE ONLY)

PERSONNEL _____ REFERENCE NO. 9 SHEET _____ OF _____
 NOTES ROUSOS DATE 6/30/2011 ROUTE US 224
 H.C. ROUSOS WEATHER SUNNY COUNTY SENECA
 R.C. HOMAN TEMP. 75° F TOWNSHIP LOUDON
 _____ SECTION 32
 _____ T 2 N R 13 E

TYPE MONUMENT MAG/WASHER
 ON SURFACE - ~~BELOW~~ _____ ON _____
 LEFT - ☉ PAV'T - RIGHT _____ ON _____
 _____ TO _____ EDGE PAVEMENT
 S.L.M. 82+39.21

(8)



GRID: NORTHING: 517404.973 EASTING: 1722723.559

RECORD:
 FD MAG NAIL
 6-30-2011

